

LHBT/R or S SERIES

High Lumen Industrial High-Bay LED Luminaire Diffuser Enclosed LED Design



Fixture Type:

Job Information:

SPECIFICATIONS:

LED MODULES:

- High performance linear configured LED module boards.
- Each board consists of multiple mid-power, high efficacy LEDs in a precise layout eliminating the need for supplemental heat sinking.
- The boards produce an even and diffuse light which maximizes optical efficiency.
- Compatible with the dimming performance of the LED driver.
- Color temperatures available: 3500K, 4000K and 5000K.

LED DRIVERS:

- Factory programmable constant current LED power supply.
- Multiple standard drive current outputs (factory set by Mercury) are cataloged with their corresponding lumen package offerings. Upon request, custom drive current outputs and lumen packages are available.
- Note: Certain cataloged lumen packages may be provided with a non-programmable constant current LED power supply at Mercury's discretion. Contact factory if critical.
- Universal voltage input, 120V-277V, 50HZ-60HZ.
- Specification grade dimming down to 1% on 0-10V dimming controls.
- Optional 480V available on request.

LED LUMEN PACKAGES:

- Cataloged standard lumen packages. See attached chart for full details.
- Custom lumen packages pre-set are optional with programmable drivers only. Contact factory for details.

HOUSING:

- Fabricated from heavy gauge code grade cold rolled steel with parts securely held into place with a combination of rivets and screws.
- Vented housing for additional heat management.
- White polyester powder coating finish on all parts for long lasting durability.
- Sufficient electrical knockouts are provided on the housing back and ends.
- Wiring access plate on back for easy installations.

DIFFUSERS:

- Twin linear diffusers extruded from custom formulated high transmission acrylic material.
- Architecturally-curved or squared profiles as specified.

- Linear ribbing for high LED performance.

INSTALLATIONS AND OPTIONS:

- Intended to be suspended on aircraft cable, chain or stems. Cataloged on accessory matrix.
- Optional top mounting box accepts a single stem, conduit, pipe, or add additional locking-hook to box which accepts chain.
- Optional wired-in flex, cord and plug sets, and twist-lock plug sets.

STANDBY LIGHTING OPTION:

- Self-contained module, 10W or 12W as specified. Mounts on top of housing. Battery backup upon loss of power.

OPTIONAL OCCUPANCY SENSOR:

- Self-contained sensor (Leviton #OSFHU or equal) mounts directly to luminaire.
- Passive infrared (PIF) technology for individual luminaire control.
- Reliable coverage up to 40Ft. height.
- Interchangeable lenses for 360 degree or aisle way pattern.

CERTIFICATE OF SAFETY COMPLIANCE AND LISTINGS:

- Luminaire: UL and CUL listed 1598 and bears their label. Suitable for damp locations.

WARRANTY:

- 5-year limited warranty is standard. Special 10-year warranty available on a job-to-job basis. Complete LED warranty terms available at www.mercltg.com.
- Actual performance may differ as a result of end-user environment and application.
- LED luminaire is suitable to operate in ambient temperatures form -40C (-40F) to 40C (104F).
- The following exclusions apply: Luminaires with standby lighting options, integral lighting controls options, or wireless control options. Consult factory.

FEATURES:

- High-Bay style linear ambient LED luminaire.
- Performance designed for very high lumen packages.
- Intended for the higher ceilings found in industrial locations as well as warehouses, big box retailing and gymnasiums.
- Ultra-thin thermally designed full body style housing.
- Enclosed LED design features twin high transmission acrylic diffusers which protect the LED modules. Also provides a softer, more visually comfortable illuminated luminaire along with a wider distribution pattern.
- Select R style for the rounded diffusers, select S style for the square diffusers.
- Standard nominal lumen packages cataloged for a 24" length or a 46" length module.
- Other lumen packages upon request.
- Digital LED technology provides high efficacy and energy efficiency.
- No maintenance required as High Bay LED luminaires require no re-lamping efforts. Extremely important with intended mounting heights up to 35 feet.
- Lumen maintenance; Reported L70 (hours) & L80 (hours) > 60,000.
- CRI greater than 80.
- Fixture lumens per watt ratios up to 129.
- For new installations or direct replacement for older HID or fluorescent luminaires.
- American Made.



LHBT/R or S SERIES

Example: LHBT-4-27000HL-40K-R-1%-UNI

LHBT				UNI				
SERIES	NOMINAL LENGTH (FT)	NOMINAL LUMENS	COLOR TEMP	DIFFUSER STYLE	DRIVER	VOLTAGE	STANDBY LIGHTING OPTIONS	OPTIONS
LHBT	2 24" Length	24" L 12,000	35K 40K 50K	R Round Profile S Square Profile	1% 0-10V 1% Dimming As Specified	UNI	EM10 EM12	MB Mounting Box. For Stem, Conduit, Pipe. MBH Mounting Box with Locking-Hook, For Chain. O1 Leviton OSFHU or equal Occupancy Sensor, 360 Degree Lens Inst. Aisle Pattern Incl. 18/3CP 120V 18/3 SJT Cord & Plug Set/Others on Request. 16/3CTP 120V 16/3 SJT Cord & NEMA L5-15P Twist-Lock Plug Set/Others on Request. 277V-16/3CTP 277 16/3 SJT Cord & NEMA L7-15P Twist-Lock Plug Set/Others on Request.
	4 46" Length	46"L 16,000 20,000 24,000 27,000						

HANGING ACCESSORIES

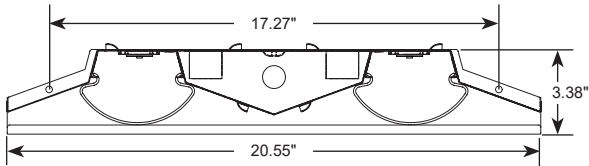
PART #	DESCRIPTION
CH-18	Y-Shaped 18"L Cable/Paddle Hanger.
ACXX	Aircraft Cable/XX= 48"L, 96"L, 150"L
VH-XX	"V" Hanger w/XX= 48"L or 72"L Chain & "S" Hook



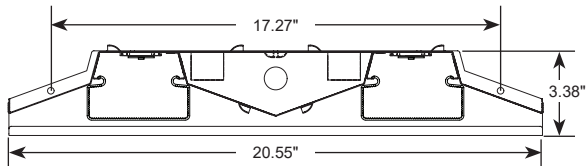
PHOTOMETRICS:

All photometric reports are available at www.mercltq.com.

CROSS SECTION:



LHBT SERIES – R STYLE



LHBT SERIES – S STYLE



LHBT/R or S SERIES

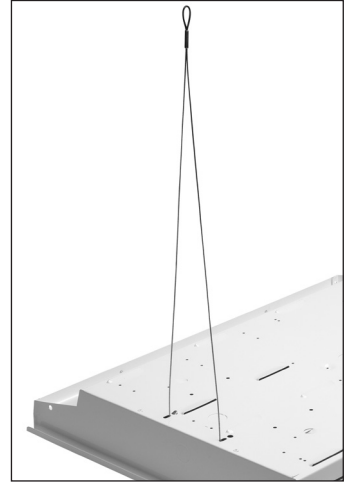
LUMEN PACKAGE:

Series	Nominal Length (FT)	Nominal Lumen Package	Color	Fixture Power (W)	Delivered Lumens	Fixture LPW
LHBT	2					
		12,000	3500K	97	11,832	122
		12,000	4000K	97	12,000	124
		12,000	5000K	97	12,288	127
		14,000	3500K	112	13,366	119
		14,000	4000K	112	13,556	121
		14,000	5000K	112	13,882	124

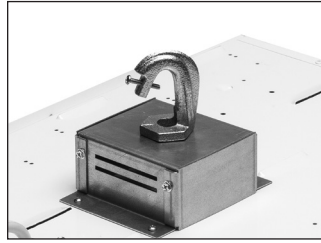
Series	Nominal Length (FT)	Nominal Lumen Package	Color	Fixture Power (W)	Delivered Lumens	Fixture LPW
LHBT	4					
		16,000	3500K	126	15,696	125
		16,000	4000K	126	16,032	127
		16,000	5000K	126	16,300	129
		20,000	3500K	160	19,812	124
		20,000	4000K	160	20,092	126
		20,000	5000K	160	20,576	129
		24,000	3500K	198	24,024	121
		24,000	4000K	198	24,368	123
		24,000	5000K	198	24,952	126
		27,000	3500K	223	26,732	120
		27,000	4000K	223	27,112	122
		27,000	5000K	223	27,764	125



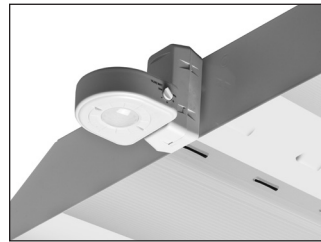
Twist lock plug set



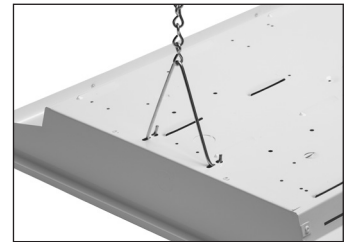
Y shaped cable



Mounting Box, shown with additional locking-hook



Sensor Detail, Levitan OSFHU



V Hanger w/chain

Actual wattage may differ by +/- 5% when operating between 120V-277V +/- 10%.

