



LR16W SERIES

Architectural Recessed 2X4 LED Volume Luminaire PERFORATED LIGHT SHIELD

Fixture Type: _____

Job Information: _____

SPECIFICATIONS:

LED MODULES:

- High performance linear configured LED module boards.
- Each board consists of multiple mid-power, high efficacy LEDs in a precise layout eliminating the need for supplemental heat sinking.
- The boards produce an even and diffuse light which maximizes optical efficiency.
- Compatible with the dimming performance of the LED driver.
- Color temperatures available: 3500K, 4000K.
- Upon request: 3000K, 5000K.

LED DRIVERS:

- Factory programmable constant current LED power supply.
- Multiple standard drive current outputs (factory set by Mercury) are cataloged with their corresponding lumen package offerings. Upon request, custom drive current outputs and lumen packages are available.
- Note: Certain cataloged lumen packages may be provided with a non-programmable constant current LED power supply at Mercury's discretion. Contact factory if critical.
- Universal voltage input, 120V-277V, 50HZ-60HZ.
- Specification grade dimming down to 1% on 0-10V dimming controls.
- Optional pre-configured drive current drivers are available. Non-dimming.

LED LUMEN PACKAGES:

- Cataloged standard lumen packages. See attached chart for full details.
- Custom lumen packages pre-set are optional with programmable drivers only. Contact factory for details.

HOUSING:

- All metal parts are fabricated in a computer-controlled operation from heavy gauge code grade cold rolled steel.
- Rivets hold all parts together for strength and unity.
- A custom formulated non-glare white powder coating is applied to the housing after fabrication providing a reflectivity of at least 90%.

LIGHT SHIELD:

- Fabricated from heavy gauge perforated steel.
- Integrated with an internal white Mylar panel.

STANDBY LIGHTING OPTION:

- Self contained module, 7W, 10W or 12W as specified. Battery backup upon loss of power.
- May not be available with some higher lumen packages. See Lumen package matrix.

INSTALLATIONS:

- Designed for installation into NEMA Type G lay-in acoustical grid ceiling systems, 1" grid or 9/16" fine-line grid.
- For NEMA Type F dry wall applications an additional flange kit must be used with Type G housing.
- Four pry-out style grid support clips are located on the housing sides.
- Four auxiliary suspension points are also provided for securing to building structure.
- A quick wiring access plate is located on back of the housing. Additional knockouts provided.
- Factory installed power whips as specified.

CERTIFICATE OF SAFETY COMPLIANCE AND LISTINGS:

- Luminaire: UL and CUL listed 1598 and bears their label. Suitable for damp locations.
- IC rated. (Some higher lumen packages may not qualify. See Lumen Package matrix).

WARRANTY:

- 5-year limited warranty is standard. Special 10-year warranty available on a job-to-job basis. Complete LED warranty terms available at www.mercltg.com.
- Actual performance may differ as a result of end-user environment and application.
- Most LED luminaires are suitable to operate in ambient temperatures from -20C (-4F) to 25C (77F).
- The following exclusions apply: Luminaires with optional standby lighting option, integral lighting controls options, or wireless control options. Consult factory.
- LM-79 testing was measured under a controlled 25C (77F) ambient operating temperature.

FEATURES:

- Recessed 2X4 ambient LED luminaire featuring a center perforated metal light shield.
- Light shield, integrated with an internal Mylar panel, envelopes the LED light source allowing maximum light transmission while eliminating pixilations and hot spots.
- Delivers a balanced amount of horizontal and vertical illumination.
- Digital LED technology provides high efficacy and energy efficiency.
- Multiple power and light levels are offered as standard to allow meeting design and energy needs per application. Custom factory set levels available on request.
- Lumen maintenance; Reported L70 (hours) & L80 (hours) > 60,000.
- CRI greater than 80.
- Fixture lumens per watt ratios up to 81.



LR16W SERIES

Fixture Type: _____

Job Information: _____

ORDERING DATA: Fill in boxes below with corresponding bold options.

Example: LR16W-24G-4100-35K-1%-UNI-EM7

SERIES	MODULE SIZE/CEILING	NOMINAL LUMENS	COLOR TEMP	DRIVER	VOLTAGE	STANDBY LIGHTING OPTIONS	OPTIONS
LR16W	24G 2X4 Module/ Nema Type G/Lay-In Grid, 1" or 9/16" Fine Line.	4100 5000 6500 XXXX Custom Lumen Package. Contact Factory.	35K 40K 30K 50K Upon Request	1% 0-10V 1% Dimming As Specified	UNI	EM7 EM10 EM12	FLX 6Ft. Single Circuit Power Flex (Specify Voltage) FLX2 6Ft. 2-Circuit Power Flex (Specify Voltage)

LUMEN PACKAGE

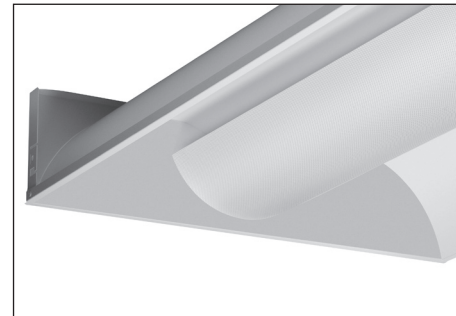
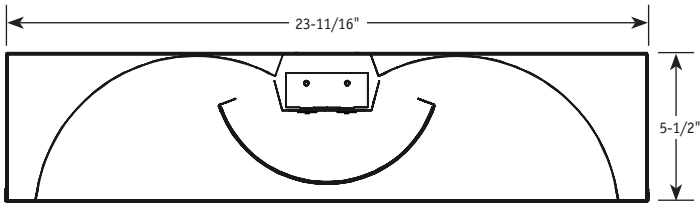
SERIES	MODULE SIZE	Nominal Lumen Package	Color	Fixture Power (W)	Delivered Lumens	Fixture LPW
LR16W	2X4					
		4100	35K	51	4039	79
		4100	40K	51	4155	81
		5000	35K	64	4921	77
		5000	40K	64	5063	79
		6500	35K	86	6341	74
		6500	40K	86	6524	76

Actual wattage may differ by +/- 5% when operating between 120V-277V +/- 10%.

PHOTOMETRICS:

All photometric reports are available at www.mercltg.com.

CROSS SECTIONS:



Detail

