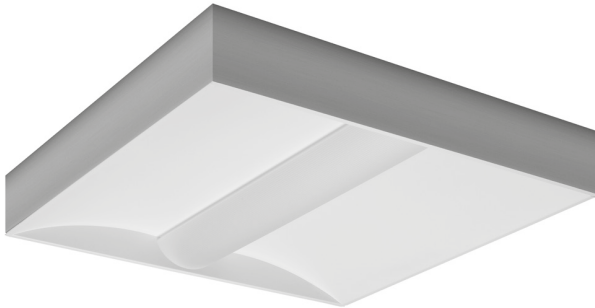


LM14 SERIES

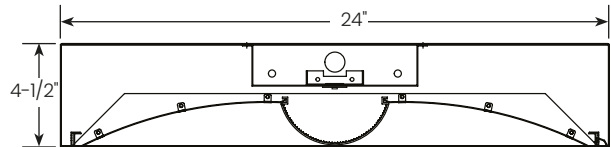
ARCHITECTURAL SURFACE MODULE 2X2 LED VOLUME LUMINAIRE



FEATURES

- Surface module full size 2X2 ambient LED luminaire featuring a single linear high transmission acrylic diffuser.
- For use where recessing is not possible or desirable, or when high ceilings necessitates suspending down to reasonable heights.
- Larger-scale rounded diffuser envelopes the LED light source allowing maximum light transmission while eliminating pixilations and hot spots.
- Delivers a balanced amount of horizontal and vertical illumination.
- Digital LED technology provides high efficacy and energy efficiency.
- Multiple power and light levels are offered as standard to allow meeting design and energy needs per application. Custom factory set levels available on request.
- Lumen maintenance; Reported L70 (hours) & L80 (hours) > 60,000.
- CRI greater than 80.
- Fixture lumens per watt ratios up to 106.
- American Made.
- Matching recessed luminaire: LR14 Series.

CROSS SECTIONS



HANGING ACCESSORIES

PART #	DESCRIPTION
R5PF-100	Round 5" power feed canopy, Hanging hardware, 100" long 1/16" cable.
S5PF-100	Square 5" power feed canopy, Hanging hardware, 100" long 1/16" cable.
R5-100	Round 5" canopy, Hanging hardware, 100" long 1/16" cable.
R2-100	Round 2" canopy, Hanging hardware, 100" long 1/16" cable.
S5-100	Square 5" canopy, Hanging hardware, 100" long 1/16" cable.
S2-100	Square 2" canopy, Hanging hardware, 100" long 1/16" cable.
VH-XX	"V" Hanger w/XX=48"L or 72"L Chain & "S" Hock
CPYS-1	S-1 Single Stem 5" Dia. Canopy
STMXX	XX=12"L, 24"L, 48"L Stem/ 3/8" IPS-5/8" OD

Other cable and stem lengths available. Consult factory.



Fixture type:	Job information:
<input type="text"/>	<input type="text"/>

LM14 SERIES

ARCHITECTURAL SURFACE MODULE 2X2 LED VOLUME LUMINAIRE



PRODUCT DEFINITION SHEET

Ex: LM5-14M-6400-35K-1%-UNI-EM7

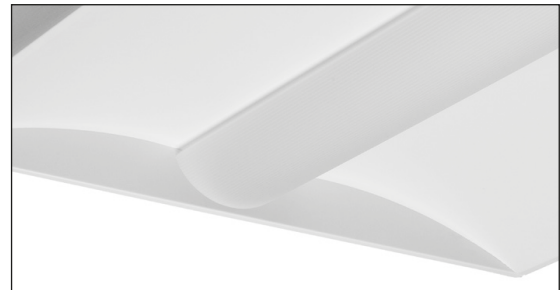


1	2	3	4	5	6
SERIES	MODULE SIZE/CEILING	NOMINAL LUMENS	COLOR TEMP	DRIVER	VOLTAGE
<input type="checkbox"/> LM14	<input type="checkbox"/> 22M 2X2 Surface Module.	<input type="checkbox"/> 2300 <input type="checkbox"/> 2600 <input type="checkbox"/> 3000 <input type="checkbox"/> 3400 <input type="checkbox"/> 3800 <input type="checkbox"/> 4300 <input type="text" value="XXXX"/> Custom Lumen Package Contact Factory	<input type="checkbox"/> 30K <input type="checkbox"/> 35K <input type="checkbox"/> 40K <input type="checkbox"/> 50K Upon Request	<input type="checkbox"/> 1% 0-10V 1% Dimming <input type="checkbox"/> - As specified	<input type="checkbox"/> UNI

7	8
STANDBY LIGHTING OPTIONS	OPTIONS
EM5 EM7 EM10 EM12	<input type="checkbox"/> As Needed

MODULE SIZE 2X4

Nominal Lumen Package	Color	Fixture Power (W)	Delivered Lumens	Fixture LPW	Standby Lighting Option
2300	3000K	23	2216	95	✓
2300	3500K	23	2258	97	✓
2300	4000K	23	2337	100	✓
2300	5000K	23	2419	104	✓
2600	3000K	27	2474	92	✓
2600	3500K	27	2521	94	✓
2600	4000K	27	2610	97	✓
2600	5000K	27	2701	101	✓
3000	3000K	30	2869	95	✓
3000	3500K	30	2923	97	✓
3000	4000K	30	3026	100	✓
3000	5000K	30	3132	104	✓
3400	3000K	32	3131	97	✓
3400	3500K	32	3190	99	✓
3400	4000K	32	3303	102	✓
3400	5000K	32	3418	106	✓
3800	3000K	37	3478	94	✓
3800	3500K	37	3544	96	✓
3800	4000K	37	3669	100	✓
3800	5000K	37	3798	103	✓
4300	3000K	45	4102	90	✓
4300	3500K	45	4179	92	✓
4300	4000K	45	4327	95	✓
4300	5000K	45	4478	99	✓



Detail

Actual wattage may differ by +/- 5% when operating between 120V-277V +/- 10%.

LM14 SERIES

ARCHITECTURAL SURFACE MODULE 2X2 LED VOLUME LUMINAIRE



LED MODULES

- High performance linear configured LED module boards.
- Each board consists of multiple mid-power, high efficacy LEDs in a precise layout eliminating the need for supplemental heat sinking.
- The boards produce an even and diffuse light which maximizes optical efficiency.
- Compatible with the dimming performance of the LED driver.
- Color temperatures available: 3000K, 3500K and 4000K.
- Upon request: 5000K.

LED DRIVERS

- Factory programmable constant current LED power supply.
- Multiple standard drive current outputs (factory set by Mercury) are cataloged with their corresponding lumen package offerings. Upon request, custom drive current outputs and lumen packages are available.
- Universal voltage input, 120V-277V, 50HZ-60HZ.
- Specification grade dimming down to 1% on 0-10V dimming controls.
- Optional pre-configured drive current drivers are available. Non-dimming.

LED LUMEN PACKAGES

- Cataloged standard lumen packages. See attached chart for full details.
- Custom lumen packages pre-set are optional. Contact factory for details.

HOUSING

- All metal parts are fabricated in a computer controlled operation from heavy gauge code grade cold rolled steel.
- Rivets and/or spot welds hold all parts for strength.
- Unique hinging and latching system allows interior components and diffuser to hinge down or be removed for easy installations.
- A custom formulated non-glare white powder coating is applied to the housing after fabrication providing a reflectivity of at least 90%.

DIFFUSER

- Larger-scale rounded profile design.
- Extruded from custom formulated high transmission acrylic material.
- Linear ribbing for high LED performance.

STANDBY LIGHTING OPTIONS

- Self contained module, 5W, 7W, 10W or 12W as specified. Battery backup upon loss of power.
- May not be available with some higher lumen packages. See Lumen package matrix.

INSTALLATIONS

- Designed for surface mounting direct to most ceiling types.
- May be suspended on auxiliary hanging hardware.
- Sufficient knockouts are provided on the back of the housing for all electrical connections.
- Blind knockouts on the ends for surface conduit entry.

CERTIFICATE OF SAFETY COMPLIANCE AND LISTINGS

- Luminaire: UL and CUL listed 1598 and bears their label. Suitable for dry locations or optional damp locations with UL Damp Label.

WARRANTY

- 5-year limited warranty is standard. Special 10-year warranty available on a job-to-job basis. Complete LED warranty terms available at www.mercltg.com
- Actual performance may differ as a result of end-user environment and application.
- Most LED luminaires are suitable to operate in ambient temperatures from -20C (-4F) to 25C (77F).
- The following exclusions apply: Luminaires with standby lighting option, integral lighting controls options, or wireless control options. Consult factory.
- LM-79 testing was measured under a controlled 25C (77F) ambient operating temperature.

PHOTOMETRICS

- All photometrics reports are available at www.mercltg.com