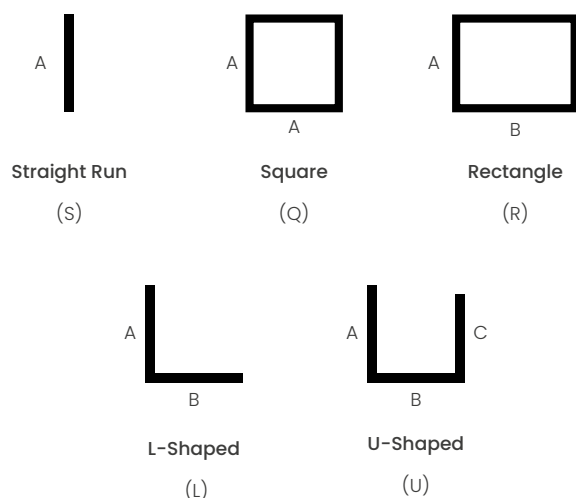


## MLW2

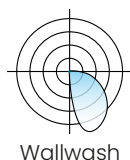
**ARCHITECTURAL LINEAR LED WALL WASHING SYSTEM  
RECESSED MOUNT FOR DRYWALL & GRID CEILINGS**



### SHAPES/PATTERNS



For other shapes/patterns consult the factory.



### FEATURES

- Extruded aluminum housing.
- Narrow 2 3/8" wide profile.
- Standard linear module lengths; 4-ft. and 8-ft.
- Newly engineered proprietary wall washing system creates a glowing transition between wall and ceiling.
- Asymmetric light distribution and high-performance optics allow a smooth gradation of light from the top down to the bottom of the wall.
- Walls are free of striations and shadows moving horizontally across the wall.
- Use multiple modules for continuous rows.
- Special lengths consult factory.
- Recessed for various ceiling types.
- Cataloged standard or custom set lumens-per-foot performances.
- 90 CRI.
- Continuous dimming capability down to 1% on 0-10V controls.
- IC rated.
- American Made.

### PERFORMANCE

Lumens per Foot (LF)	System Watts (W)
350	9.66
400	10.94
450	12.32
500	13.68

Actual performance may differ by +/- 5% when operating between 120V-277V +/- 10%.

Fixture type:	Job information:
<div></div>	<div></div>

### PRODUCT DEFINITION SHEET

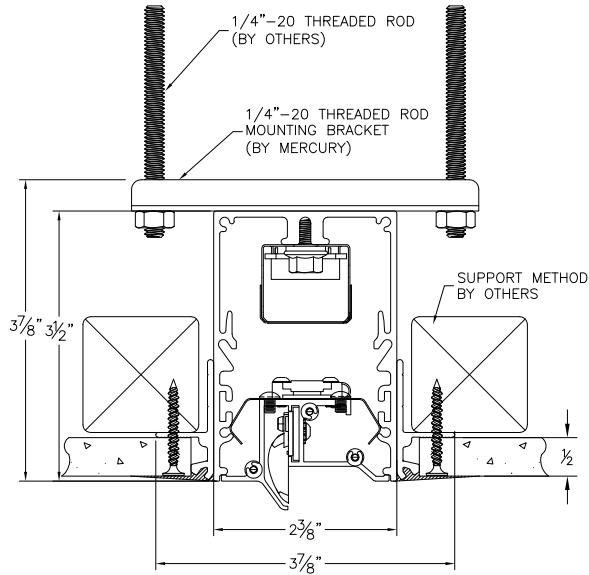
Ex: **MLW2-N5-96-S18-450-930K-1%-U-S1**

1	2	3	4	5	6	7	8	9

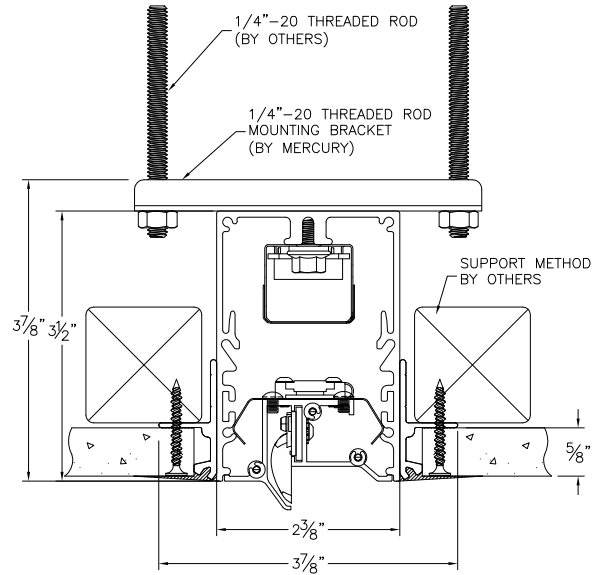
1	2	3	4
SERIES	MOUNTING	LENGTH	SHAPE (ENTER LENGTH IN PRODUCT CODE ABOVE)
<input type="checkbox"/> <b>MLW2</b> LightWash	<input type="checkbox"/> <b>N5</b> Trimless 5/8" <input type="checkbox"/> <b>N1</b> Trimless 1/2" <input type="checkbox"/> <b>F</b> Flange Trim for drywall <input type="checkbox"/> <b>G9</b> Grid 9/16" flat T grid <input type="checkbox"/> <b>G15</b> Grid 15/16" flat T grid <input type="checkbox"/> <b>S</b> Screw Slot <input type="checkbox"/> <b>S1</b> 9/16" Interlude <input type="checkbox"/> <b>T9</b> 9/16" Tegular <input type="checkbox"/> <b>T15</b> 15/16" Tegular	<input type="checkbox"/> <b>48</b> 48" Length <input type="checkbox"/> <b>96</b> 96" Length Custom Lengths or Rows Consult Factory.	<input type="checkbox"/> <b>S__</b> Individual/Straight Run Section (enter length, ex. S18) <input type="checkbox"/> <b>Q__</b> Square Configuration (enter side length A, ex. Q18) <input type="checkbox"/> <b>R__/_</b> Rectangular Configuration (enter side lengths A and B, ex. R12/24) <input type="checkbox"/> <b>L__/_</b> L-Shaped Configuration (enter side lengths A and B, ex. L12/24) <input type="checkbox"/> <b>U__/_/_</b> U-Shaped Configuration (enter side lengths A, B, and C, ex. U12/12/24) All corners of shape must be 90°, same plane. Lengths greater than 8' consist of multiple individual housing sections joined together. Lengths are nominal and may vary based on lamping and other specification selections. Consult Mercury when exact lengths are required.

OPTIONS				
5	6	7	8	9
LUMENS/FT	COLOR TEMP-CCT	DRIVER	VOLTAGE	LIGHTING CONTROLS
<input type="checkbox"/> <b>350</b> <input type="checkbox"/> <b>400</b> <input type="checkbox"/> <b>450</b> <input type="checkbox"/> <b>500</b>	<input type="checkbox"/> 90 CRI <input type="checkbox"/> <b>930K</b> 3000K <input type="checkbox"/> <b>935K</b> 3500K	<input type="checkbox"/> <b>1%</b> 0-10V 1% Dimming	<input type="checkbox"/> <b>U</b> Uni 120-277V <input type="checkbox"/> <b>1</b> 120V <input type="checkbox"/> <b>7</b> 277V Please verify at the time of release if 120V or 277V is required. Although drivers are universal voltage, a specific voltage is required to determine amp draw as well as voltage specific flexes and/or plug thrus as needed.	<input type="checkbox"/> <b>S1</b> Philips EasySense (SNS 210- Blue Tooth) <input type="checkbox"/> <b>S11</b> Enlighted Micro (SU5ECL) <input type="checkbox"/> <b>S12</b> Lutron Athena Node (Color-White) <input type="checkbox"/> <b>S13</b> Lutron Athena Node (Color-Black) <input type="checkbox"/> <b>S14</b> Lutron Athena Sensor (Color-White) <input type="checkbox"/> <b>S15</b> Lutron Athena Sensor (Color-Black) <input type="checkbox"/> <b>017</b> Leviton PIR ZLS05-ILW

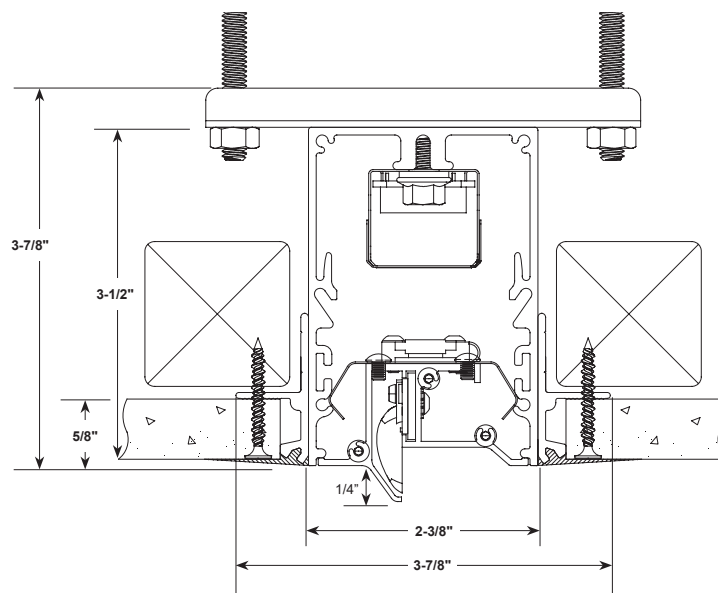
### MOUNTING



**N1**  
Trimless 1/2"

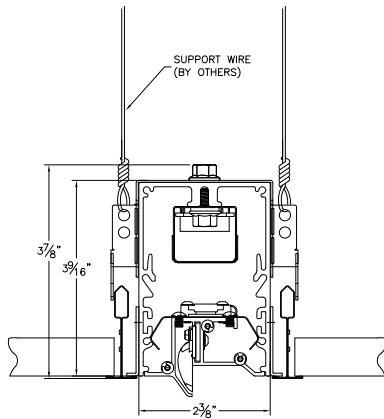


**N5**  
Trimless 5/8"



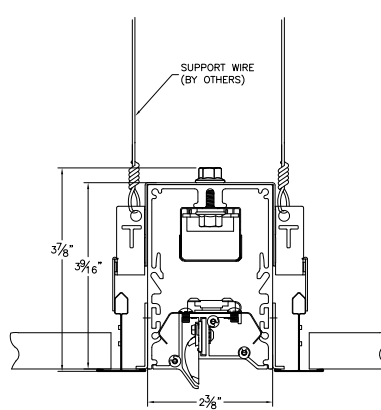
**F**  
Flange Trim for drywall

### MOUNTING



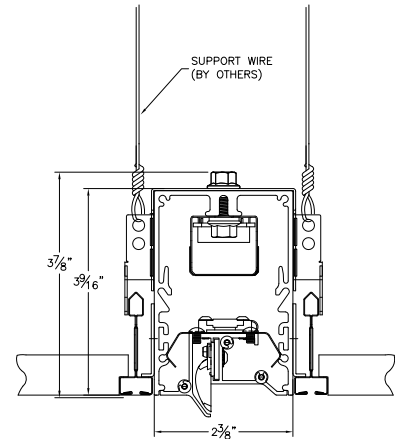
**G9**

Grid 9/16" flat T grid



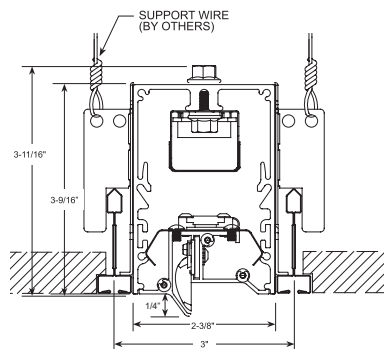
**G15**

Grid 15/16" flat T grid



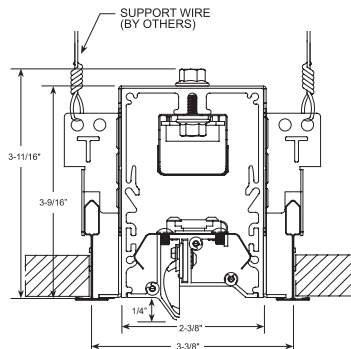
**S**

Screw Slot



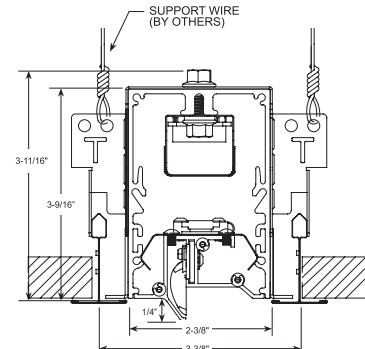
**SI**

9/16" Interlude



**T9**

9/16" Tegular



**T15**

15/16" Tegular

For surface and suspended options please visit the rest of the MLW2 family:



### HOUSINGS

Extruded aluminum profile in a 0.080-inch wall thickness. Maximum length of each linear component is 8-ft. .060 aluminum ends are standard. Engineered internal reflector system provides optimal asymmetric light distribution for wall washing. Housing is intended to be recessed in a drywall ceiling near the wall intended to be washed in light. Distance from wall to be pre-calculated based on wall washing effect desired. A custom formulated non-glare matte-white polyester powder coating provides an extremely durable and long-lasting finish.

### LED MODULES

High performance linear configured LED module boards. Each board consists of multiple mid-power, high efficacy LEDs in a precise layout eliminating the need for supplemental heat sinking. Individual LED reflectors produce an even and diffuse light which maximizes optical efficiency. Compatible with the dimming performance of the LED driver. Color temperatures available 90 CRI: 3000K and 3500K.

### LED DRIVERS

Factory programmable constant current LED power supply. Multiple standard drive current outputs (factory set by Mercury) are cataloged with their corresponding lumens-per-foot offering. Upon request, custom drive current outputs and lumens-per-foot options are available. Universal voltage input, 120V-277V, 50HZ-60HZ. Specification grade continuous dimming capability down to 1% on 0-10V dimming controls.

### INSTALLATIONS

Designed to be recessed into acoustical grid ceiling systems. See ceiling types section. Available for various types; 15/16" grid, 9/16" grid, 9/16" screw-slot, 9/16" interlude. For drywall applications see appropriate specification sheets for those ceiling types. Grid pry outs lock over top of gridwork. Auxiliary suspension required to building structure. See ceiling types section for typical installations. Trimless housing requires plastering-in after installation. Overlapping trim flange neatly closes off drywall opening. For all recessed grid applications see appropriate specification sheets for those ceiling types. All multiple module runs to include job required plug-thru wire harnesses as specified. Wiring access plate provided on top. End plates have 7/8" KO.

### CERTIFICATE OF SAFETY COMPLIANCE AND LISTINGS

Luminaire: UL and CUL listed 1598 and bears their label. Suitable for damp locations. IC rated.

### WARRANTY

5-year limited warranty is standard. Special 10-year warranty available on a job-to-job basis. Complete LED warranty terms available at [www.mercltg.com](http://www.mercltg.com). Actual performance may differ as a result of end-user environment and application. Most LED luminaires are suitable to operate in ambient temperatures from -20C (-4F) to 25C (77F). The following exclusions apply: Luminaires with standby lighting option, integral lighting controls options, or wireless control options. Consult factory. LM-79 testing was measured under a controlled 25C (77F) ambient operating temperature.