

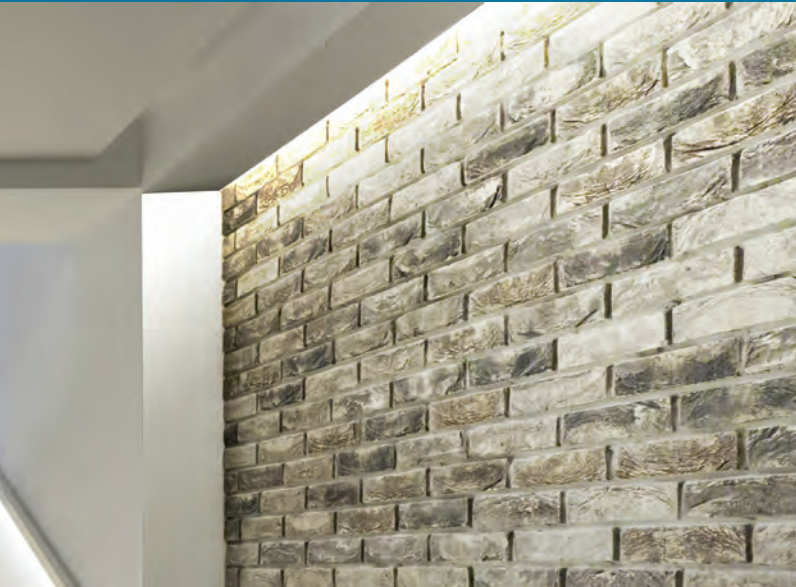
# LIGHTPERIMETER

UPDATED ON 02-24-25

## MLP3-WG SERIES

## RECESSED PERIMETER WALL GRAZING SYSTEM 1", 2" OR 3" DEEP REGRESSION

Architectural Linear LED Illuminating System | LIGHTPERIMETER



### Standard Features

- Recessed perimeter linear LED wall grazing system.
- Engineered and designed to provide to the wall a very uniform graze of light from top to bottom.
- Highlights and enhances wall textures for character and interest.
- Adds to the overall general room illumination.
- Enhances and defines the perimeter of the ceiling while making a space feel bigger and brighter.
- Mounts against the wall and provides a defined floating edge to the ceiling.
- Housing regresses up into the ceiling; 1-, 2-, or 3-inches.
- Extruded aluminum housing for perfectly straight lines of light.
- Approximate 3-1/2" opening from ceiling to wall.
- Linear lengths; 2-ft. and above in increments of one-inch.
- Tunable white feature optional.
- Proprietary wall grazing lens is extruded from custom blended acrylic.
- Non-glare matte-white polyester powder coating finish.
- Cataloged standard or custom set lumens-per-foot performances.
- 80 CRI standard. 90 CRI available.
- Continuous dimming capability down to 1% on 0-10V controls.
- IC rated.
- CCEA option available.
- Fixture lumens per watt ratios up to 136.
- Standard and custom corners
- American Made.



### Performance

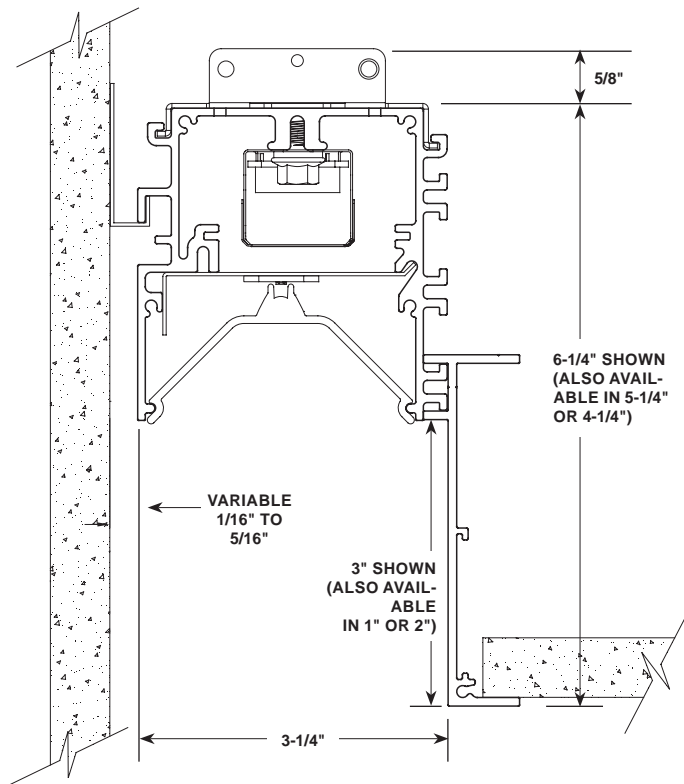
Based on 4Ft. Module, 3500K, 80 CRI, 3" Deep Regression-Signify LV6 LED Boards

Lumens per Foot	Total Lumens (4Ft)	Color	System Watts (W)	Lumens per Watt (LPW)
400	1600	35K	11.8	136
500	2000	35K	14.8	135
625	2500	35K	18.7	134
850	3400	35K	25.7	132
1000	4000	35K	30.9	129
1240	4960	35K	39.2	127

**Multiplier for other Color Temp (K)**

3000K	97%
3500K	100%
4000K	102%
5000K	103%

Actual performance may differ by +/- 5% when operating between 120V-277V +/- 10%. Consult Factory for 90 CRI performances.




fixture type:		job information:	
---------------	--	------------------	--

# MLP3-WG Series | LIGHTPERIMETER

Architectural Linear LED Illuminating System | Recessed Perimeter Wall Grazing System | 1", 2" or 3" Deep Regression

Ex: MLP3-N5-3-96-850-35K-WG-1%-U-EM12

Options

MLP3			WG							
Series	Mounting	Regression Depth	Module Length	Lumens/Ft	Color Temp	Diffuser	Driver	Voltage	Standby Modules*	Misc.
MLP3 LightPerimeter	<b>G</b> Grid 9/16" or 15/16"  <b>F</b> Overlapping Flange Trim  <b>N5</b> Trimless Plaster-In for 5/8" Drywall	<b>3</b> 3" Regression Default Setting  <b>2</b> 2" Regression Optional Setting  <b>1</b> 1" Regression Optional Setting	<b>48</b> 48" Length	<b>400</b> <b>500</b> <b>625</b> <b>850</b> <b>1000</b> <b>1240</b>	80 CRI  90 CRI	<b>WG</b> Wall Graze Frost	<b>1%</b> 0-10% Dimming  <b>1% DD</b> 0-10% Dimming Dim to Dark  <b>SR</b> Sensor Ready (Required for Certain Controls, Contact Factory)  <b>eL</b> eldoLED Solo 0.1%  <b>LDE1</b> Lutron Hi-Lume	<b>U</b> Uni 120V-277V  <b>1</b> 120V  <b>7</b> 277V  <b>X</b> As Specified	<b>EM7</b> <b>EM10</b> <b>EM12</b>  No Option	<b>WL</b> UL "Suitable for Wet Locations" labeled.  <b>CCEA</b> Meets the City of Chicago Environmental Air specifications-except the TEL version.  XXXXXXXX
			Custom or Row Length. 24" and above in 1" increments. Ex. in inches: 82, 384, etc.	Custom Lumen Package. Contact Factory						

\*Available in modules of 4-ft. and longer. / Maximum 625 Lumens per foot packages.

## Housings

Extruded aluminum profile in a 0.080-inch wall thickness.  
Maximum length of each linear component is 8-ft.  
.060 aluminum ends are provided where needed at row termini.  
A one-piece 14GA galvanized steel joiner/aligner bracket is provided for each joint between housings.  
Internal cold-rolled steel components.  
Housing intended for recessing at the perimeter of drywall or grid type ceiling systems.  
Wall side of housing mounts directly to the wall.  
A custom formulated non-glare matte-white polyester powder coating provides an extremely durable and long-lasting finish.

## Diffusers

Seamless fit diffusers. Flawless and consistent end-to-end fit.  
Proprietary wall grazing lens is extruded from frosted clear acrylic material.

## LED Modules

High performance linear configured LED module boards.  
Each board consists of multiple mid-power, high efficacy LEDs in a precise layout eliminating the need for supplemental heat sinking.  
The boards produce an even and diffuse light which maximizes optical efficiency.  
Compatible with the dimming performance of the LED driver.  
Color temperatures available 80 CRI: 3000K, 3500K and 4000K. Upon request: 5000K.  
Color temperatures available 90 CRI: 2700K, 3000K, 3500K and 4000K.

## Tunable White Option

Field tunable range 2700K through 6500K.  
80CRI.



## LED Drivers

Factory programmable constant current LED power supply.  
Multiple standard drive current outputs (factory set by Mercury) are cataloged with their corresponding lumens-per-foot offering. Upon request, custom drive current outputs and lumens-per-foot options are available.  
Note: Certain cataloged lumens-per-foot offerings may be provided with a non-programmable constant current LED power supply at Mercury's discretion. Contact factory if critical.  
Universal voltage input, 120V-277V, 50HZ-60HZ.  
Continuous dimming capability down to 1%-standard. 0.1% available upon request.  
Dim to Dark option available upon request.  
Lutron driver available: LDE1 series.

## Standby Lighting Options

Self-contained module, 7W, 10W or 12W as specified. Battery backup upon loss of power.  
Available in modules of 4-ft. and longer. (Limited to 625 Lumens per foot packages).

## Corners

Standard 90 degree corners for inside or outside turns.  
Custom angled corners.

## Installations

Designed for recessing at the perimeter of drywall or grid type ceiling systems.  
Wall side of housing mounts easily on separate wall mounting bracket system.  
Drywall ceiling options: Trimless housing (N5) for 5/8" drywall requires plastering-in by others after installation. Overlapping flange trim (F) neatly closes off drywall opening. Note: For all drywall installations, fixtures must be installed prior to ceiling.  
Grid ceiling option (G): flange sits on grid system, or tiles and cross tees can rest on flange.  
Ceiling side of N5 housing must be supported by threaded rod by others.  
Ceiling side of F or G housings must be supported by either wire supports or threaded rod by others.  
Lengths of 8-ft. and less to use one housing with two ends pre-installed.

Lengths over 8-ft. will be engineered to job requirements using multiple housings with one end pre-installed at each row end.

Lengths over 8-ft. will include appropriate job required quick-connect plug-thru wire harnesses and housing joiners.

## Certificate of Safety Compliance and Listings

Luminaire: UL and CUL listed 1598 and bears their label. Suitable for damp locations.  
IC rated.

Optional: Suitable for wet locations marking is available. Some limitations apply. Contact factory for all details.

CCEA option meets the City of Chicago Environmental Air specifications-Except the TEL version.

## Warranty

5-year limited warranty is standard. Special 10-year warranty available on a job-to-job basis. Complete LED warranty terms available at [www.merclgt.com](http://www.merclgt.com).  
Actual performance may differ as a result of end-user environment and application.

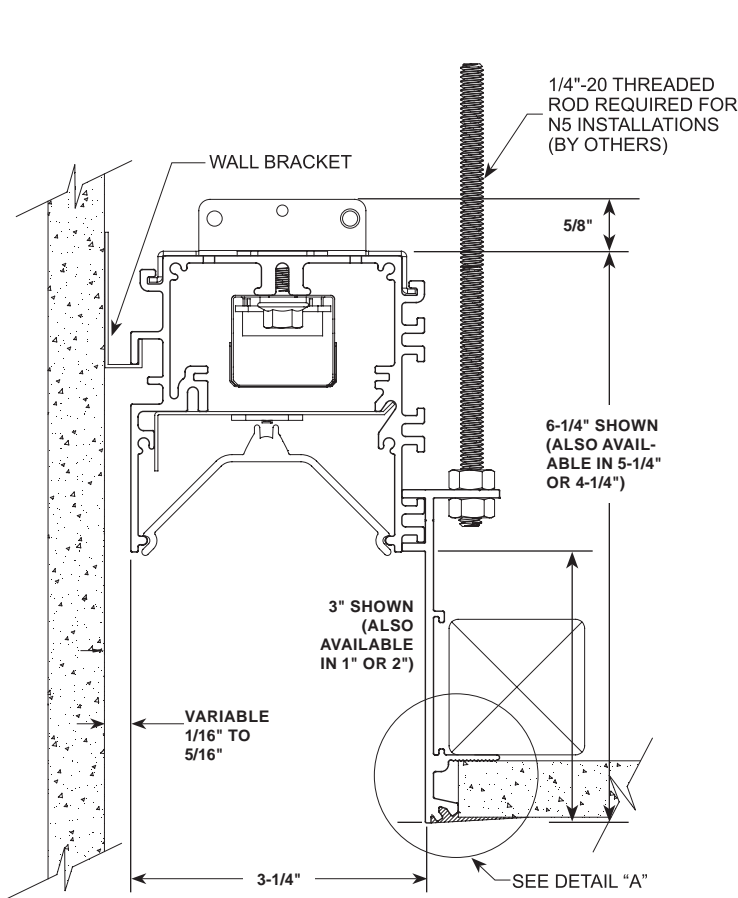
Most LED luminaires are suitable to operate in ambient temperatures from -20C (-4F) to 25C (77F).

The following exclusions apply: Luminaires with standby lighting option, integral lighting controls options, or wireless control options. Consult factory.  
LM-79 testing was measured under a controlled 25C (77F) ambient operating temperature.

# MLP3-WG Series | LIGHTPERIMETER

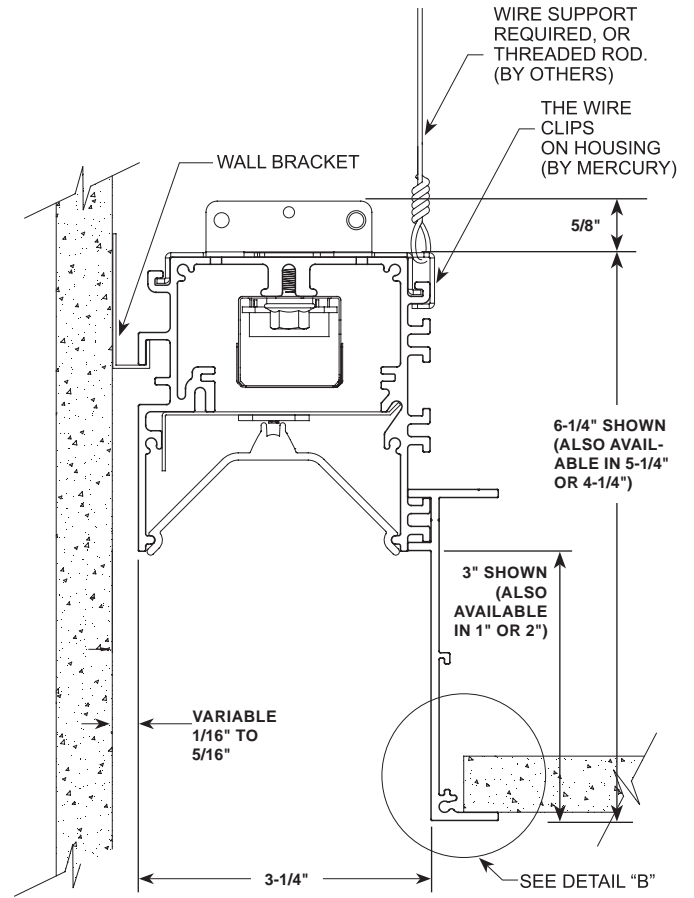
Architectural Linear LED Illuminating System | Recessed Perimeter Wall Grazing System | 1", 2" or 3" Deep Regression

## Ceiling Types and Dimensions



### N5

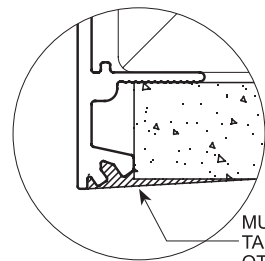
Trimless Plaster-In for 5/8" Drywall  
(REQUIRES PLASTERING-IN AFTER INSTALLATION BY OTHERS)



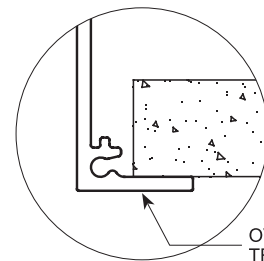
### G Grid 9/16" or 15/16"

OR  
F Overlapping Flange Trim

**NOTE:** Fixture must be installed prior to ceiling in all drywall applications (N5 and F).



DETAIL "A"



DETAIL "B"

