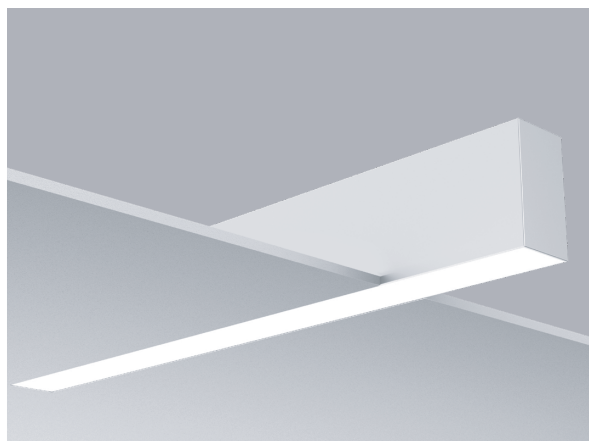


MLS1.5

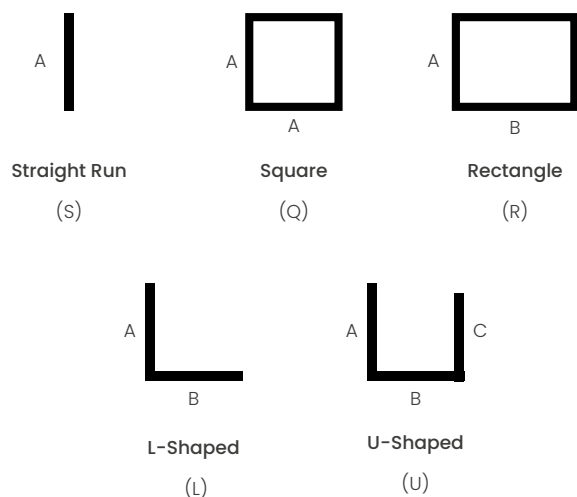
INTEGRAL DRIVER RECESSED MOUNT FOR DRYWALL & GRID CEILINGS



FEATURES

- Extruded aluminum housing.
- Narrow 1-7/8" wide profile.
- Linear lengths of 2ft and above in increments of an inch.
- Custom formulated high diffusion extruded acrylic lens.
- Non-glare matte-white polyester powder coating finish.
- Recessed for various ceiling types.
- Standard or custom set lumens-per-foot performances.
- 80 CRI standard. 90 CRI available.
- Continuous dimming capability down to 1% on 0-10V controls.
- IC rated.
- CCEA option available.
- Fixture lumens per watt ratios up to 105.
- Lighting controls and sensors.
- Standard and custom corners.
- Tunable white feature optional.
- American Made.
- Lightning Program eligible (ships in 15 days or less): See ordering data for options.

SHAPES/PATTERNS



For other shapes/patterns consult the factory.

PERFORMANCE - HTA

Lumens per Foot (LF)	Delivered Lumens (L)	System Watts (W)	Lumens per Watt (LPW)
400	1600	15.2	105
500	2000	19.1	105
625	2500	24.4	102
825	3300	32.9	100
950	3840	39.0	98

Based on 4Ft. Module, 3500K, 80 CRI, HTA diffuser-Signify LV6 LED Boards.

Actual performance may differ by +/- 5% when operating between 120V-277V +/- 10%. Consult Factory for 90 CRI performances.

Multiplier for other Color Temp (K)

3000K	97%
3500K	100%
4000K	102%
5000K	103%



PERFORMANCE - ASO

Lumens per Foot (LF)	Delivered Lumens (L)	System Watts (W)	Lumens per Watt (LPW)
400	1600	22.2	72
500	2000	28.4	70
625	2500	36.1	69
670	2680	39.0	69

Based on 4Ft. Module, 3500K, 80 CRI, ASO diffuser-Signify LV6 LED Boards.

Actual performance may differ by +/- 5% when operating between 120V-277V +/- 10%. Consult Factory for 90 CRI performances.

Multiplier for other Color Temp (K)

3000K	97%
3500K	100%
4000K	102%
5000K	103%



Fixture type:

Job information:

MLS1.5

INTEGRAL DRIVER RECESSED MOUNT FOR DRYWALL & GRID CEILINGS



PRODUCT DEFINITION SHEET

All options highlighted in **BLUE** are eligible for **Lightning Program** (same quality product, shipped in 15 days or less)

Ex: **MLS1.5-G-144-825-35K-HTA-1%-U-EM12-S1**

1	2	3	4	5	6	7	8	9	10	11	12
	-		-		-		-		-		-

1	2	3	4
SERIES	MOUNTING	MODULE OR ROW LENGTH	SHAPE (ENTER LENGTH IN PRODUCT CODE ABOVE)
<input type="checkbox"/> MLS1.5 LightStreams 2	<input type="checkbox"/> N5 Trimless 5/8"	<input type="checkbox"/> 48 48" Length	<input type="checkbox"/> S__ Individual/Straight Run Section (enter length, ex. S18)
<input type="checkbox"/> LP-MLS1.5 Lightning Program	<input type="checkbox"/> N1 Trimless 1/2"	<input type="checkbox"/> 96 96" Length	<input type="checkbox"/> Q__ Square Configuration (enter side length A, ex. Q18)
	<input type="checkbox"/> F Flange Trim for drywall	<input type="checkbox"/> 144 144" Length	<input type="checkbox"/> R__/_ Rectangular Configuration (enter side lengths A and B, ex. R12/24)
	<input type="checkbox"/> G9 Grid 9/16" flat T grid	Custom or Row Length. 24" and above in 1" increments. Ex. in inches: 82, 384, etc.	<input type="checkbox"/> L__/_ L-Shaped Configuration (enter side lengths A and B, ex. L12/24)
	<input type="checkbox"/> G15 Grid 15/16" flat T grid		<input type="checkbox"/> U__/_/_ U-Shaped Configuration (enter side lengths A, B, and C, ex. U12/12/24)
	<input type="checkbox"/> S Screw Slot		All corners of shape must be 90°, same plane. Lengths greater than 8' consist of multiple individual housing sections joined together. Lengths are nominal and may vary based on lamping and other specification selections. Consult Mercury when exact lengths are required.
	<input type="checkbox"/> S1 9/16" Interlude		
	<input type="checkbox"/> T9 9/16" Tegular		
	<input type="checkbox"/> T15 15/16" Tegular		

5	6	7	8	9
LUMENS/FT	CCT	DIFFUSER	DRIVER	VOLTAGE
HTA	80 CRI	<input type="checkbox"/> HTA High Transmission Acrylic	<input type="checkbox"/> 1% 0-10V 1% Dimming	<input type="checkbox"/> U Uni 120-277V
<input type="checkbox"/> 400	<input type="checkbox"/> 30K	<input type="checkbox"/> ASO Acrylic Smooth Opal (Performance is reduced with this diffuser)	<input type="checkbox"/> 1% DD 0-10% Dimming Dim to Dark	<input type="checkbox"/> 1 120V
<input type="checkbox"/> 500	<input type="checkbox"/> 35K		<input type="checkbox"/> SR Sensor Ready (Required for Certain Controls, Contact Factory)	<input type="checkbox"/> 7 277V
<input type="checkbox"/> 625	<input type="checkbox"/> 40K			Please verify at the time of release if 120V or 277V is required. Although drivers are universal voltage, a specific voltage is required to determine amp draw as well as voltage specific flexes and/or plug thrus as needed.
<input type="checkbox"/> 825	<input type="checkbox"/> 50K Upon request		<input type="checkbox"/> eL eldoLED Solo 0.1%	
<input type="checkbox"/> 960	<input type="checkbox"/> TW 27K-65K		<input type="checkbox"/> LDE1 Lutron Hi- Lume	
ASO	90 CRI		<input type="checkbox"/> - As Specified	
<input type="checkbox"/> 400	<input type="checkbox"/> 927K			
<input type="checkbox"/> 500	<input type="checkbox"/> 930K			
<input type="checkbox"/> 625	<input type="checkbox"/> 935K			
<input type="checkbox"/> 670	<input type="checkbox"/> 940K			
Custom Lumen Packages.				

OPTIONS

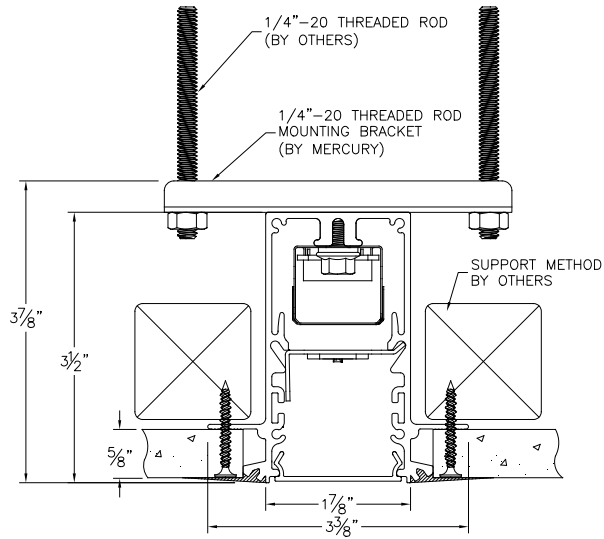
10	11	12
STANDBY MODULES	MISC.	LIGHTING CONTROLS
<input type="checkbox"/> EM10	<input type="checkbox"/> WL UL "Suitable for Wet Locations" labeled	<input type="checkbox"/> S1 Philips EasySense (SNS 210- Blue Tooth)
<input type="checkbox"/> EM12	<input type="checkbox"/> CCEA Meets the City of Chicago Environmental Air specifications.	<input type="checkbox"/> S11 Enlighted Micro (SU5ECL)
<input type="checkbox"/> - No Option	<input type="checkbox"/> BAA/BABA Consult factory.	<input type="checkbox"/> S12 Lutron Athena Node (Color-White)
Available in modules of 4-ft. and longer.		<input type="checkbox"/> S13 Lutron Athena Node (Color-Black)
		<input type="checkbox"/> S14 Lutron Athena Sensor (Color-White)
		<input type="checkbox"/> S15 Lutron Athena Sensor (Color-Black)
		<input type="checkbox"/> 017 Leviton PIR ZLS05-ILW
		<input type="checkbox"/> As Specified

MLS1.5

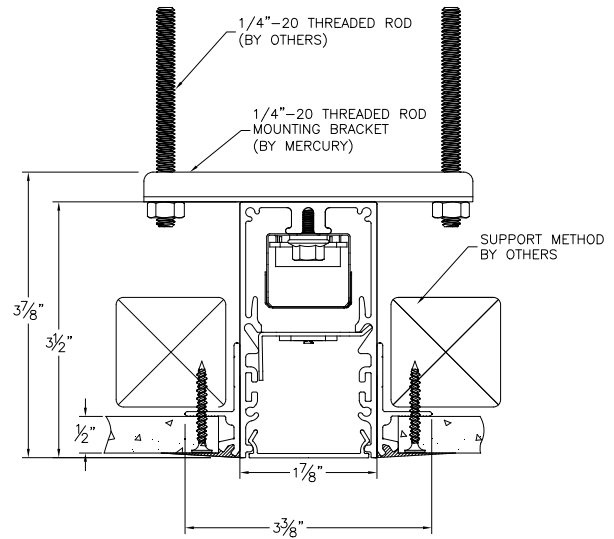
INTEGRAL DRIVER
RECESSED MOUNT FOR DRYWALL & GRID CEILINGS



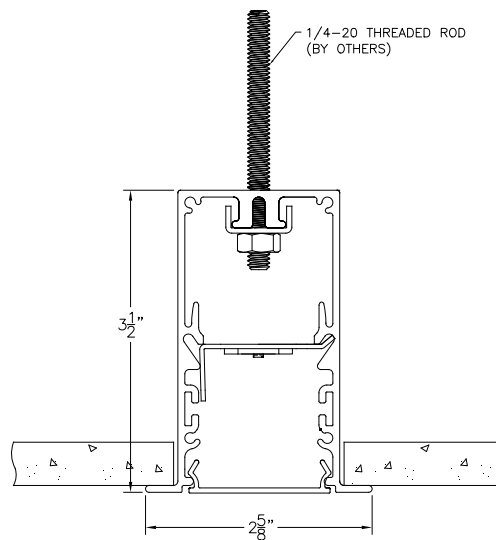
MOUNTING



N5
Trimless 5/8"



N1
Trimless 1/2"



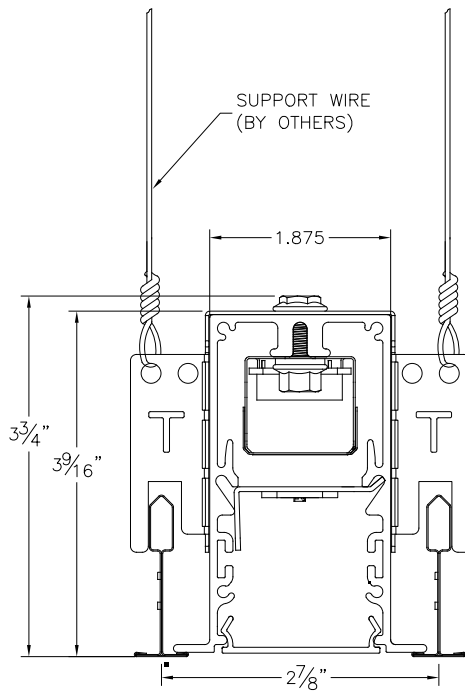
F
Flange Trim for drywall

MLS1.5

INTEGRAL DRIVER
RECESSED MOUNT FOR DRYWALL & GRID CEILINGS

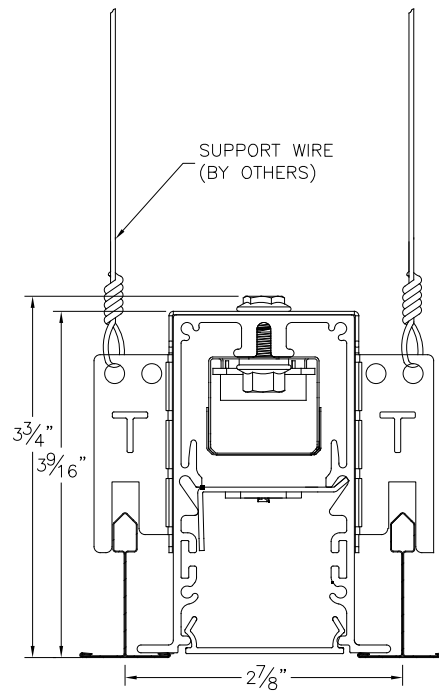


MOUNTING



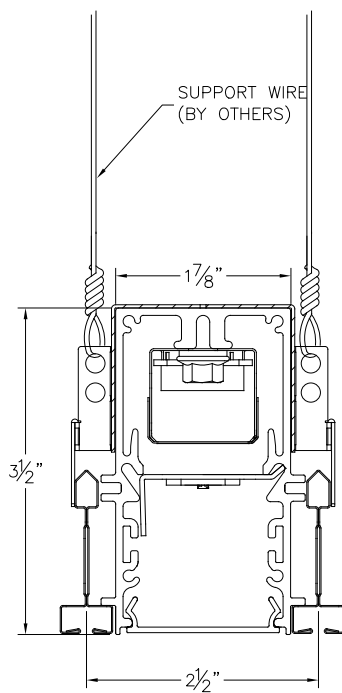
G9

Grid 9/16" flat T grid



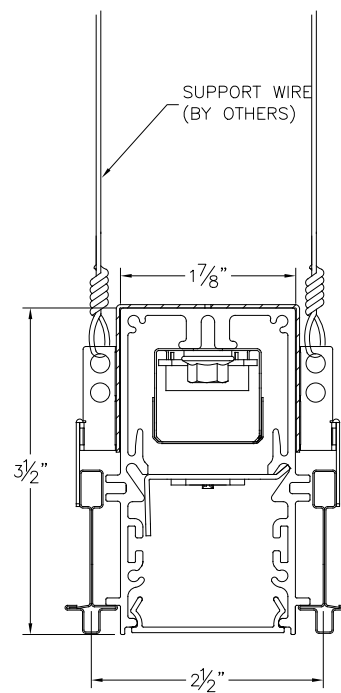
G15

Grid 15/16" flat T grid



S

Screw Slot



SI

9/16" Interlude

MLS1.5

INTEGRAL DRIVER

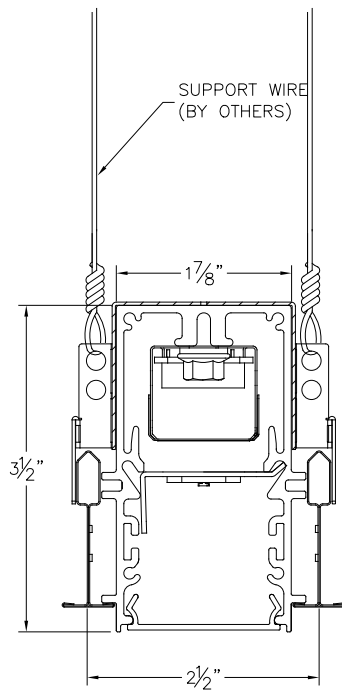
RECESSED MOUNT FOR DRYWALL & GRID CEILINGS



MERCURY[®]

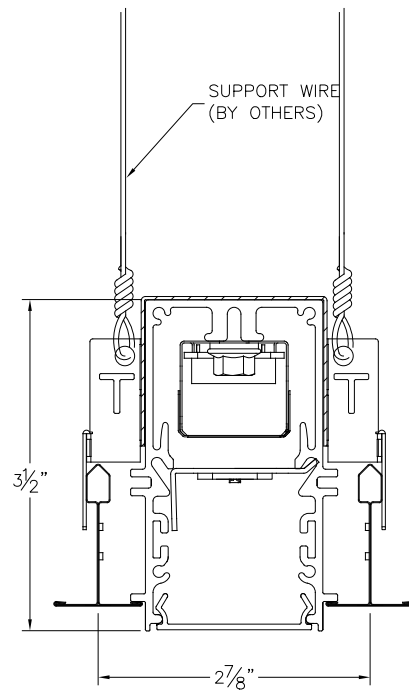
Lighting Progress

MOUNTING



T9

9/16" Regular



T15

15/16" Regular

For surface and suspended options please visit the rest of the MLS1.5 family.



MLS1.5

INTEGRAL DRIVER

RECESSED MOUNT FOR DRYWALL & GRID CEILINGS



HOUSINGS

Extruded aluminum profile in a 0.080-inch wall thickness. Maximum length of each linear component is 12-ft. .060 aluminum ends are provided where needed at row termini. A one-piece 14GA galvanized steel joiner/aligner bracket is provided for each joint between housings. Internal cold-rolled steel components. Housing intended for recessing into drywall type ceilings systems. Trimless housing for plaster-in or overlapping flange trim. See ceiling types section. Easy-use grid pry outs provided. A custom formulated non-glare matte-white polyester powder coating provides an extremely durable and long-lasting finish.

DIFFUSERS

Seamless fit diffusers. Flawless and consistent end-to-end fit. **HTA diffuser:** extruded from custom formulated high transmission white acrylic material. Specify when the highest performance levels are required. **ASO diffuser:** extruded from custom formulated smooth opal acrylic material. Specify when a more esthetically white appearance is desired. Smooth finish on both diffusers compliments the architectural elements.

LED MODULES

High performance linear configured LED module boards. Each board consists of multiple mid-power, high efficacy LEDs in a precise layout eliminating the need for supplemental heat sinking. The boards produce an even and diffuse light which maximizes optical efficiency. Compatible with the dimming performance of the LED driver. Color temperatures available 80 CRI: 3000K, 3500K and 4000K. Upon request: 5000K. Color temperatures available 90 CRI: 2700K, 3000K, 3500K and 4000K.

TUNABLE WHITE OPTION

Field tunable range 2700K through 6500K. 80CRI.

LED DRIVERS

Factory programmable constant current LED power supply. Multiple standard drive current outputs (factory set by Mercury) are cataloged with their corresponding lumens per-foot offering. Upon request, custom drive current outputs and lumens-per-foot options are available. Note: Certain cataloged lumens-per-foot offerings may be provided with a non-programmable constant current LED power supply at Mercury's discretion. Contact factory if critical. Universal voltage input, 120V-277V, 50HZ-60HZ. Continuous dimming capability down to 1%-standard. 0.1% available upon request. Dim to Dark option available upon request. Sensor ready (SR) drivers compatible with most lighting controls are optional. Consult factory. Lutron driver available: LDEI series. (Limited to 625 Lumens per foot packages).

STANDBY LIGHTING OPTIONS

Self-contained module, 7W, 10W or 12W as specified. Battery backup upon loss of power. Available in modules of 4-ft. and longer. (Limited to 625 Lumens per foot packages).

INTEGRAL LIGHTING CONTROLS

Various lighting controls and sensors are optional. Consult factory.

CORNERS

Standard 90 degree corners. Custom angled corners.

INSTALLATIONS

Designed for recessed installation into acoustical grid ceiling systems. See ceiling types section. Availability for various types; 15/16" grid, 9/16" grid, 9/16" screw-slot, 9/16" interlude, 15/16" tegular, 9/16" tegular. Trimless housing requires plastering-in after installation. Overlapping trim neatly closes off drywall opening. For all recessed grid applications see appropriate specification sheets for those ceiling types. For drywall applications see appropriate specification sheets for those ceiling types. Grid pry outs lock over top of gridwork. Auxiliary suspension required to building structure. Lengths of 12-ft. and less to use one housing with two ends pre-installed. Lengths over 12-ft. will be engineered to job requirements using multiple housings with one end pre installed at each row end. Lengths over 12-ft. will include appropriate job required quick-connect plug-thru wire harnesses and housing joiners. Wiring access plate provided on top. End plates have 7/8" KO.

CERTIFICATE OF SAFETY COMPLIANCE AND LISTINGS

Luminaire: UL and CUL listed 1598 and bears their label. Suitable for damp locations. Optional: Suitable for wet locations marking is available. Some limitations apply. Contact factory for all details. IC rated. CCEA option meets the City of Chicago Environmental Air specifications.

LIGHTNING PROGRAM

Same quality product, shipped in 15 days or less (if drawings are required, 15 days or less starts after drawings are released). Entire order must qualify for [Lightning Program](#) in order to meet freight charges. Please contact our sales team if unsure your order will qualify. Options highlighted in Blue, 500 linear feet or less, are eligible for quick ship [Lightning Program](#). Relates to straight runs ONLY. Other variations not highlighted in blue may be available under [Lightning Program](#). Please consult factory. Specify LP-MLS1.5 when placing order if you would like to use [Lightning Program](#).

WARRANTY

5-year limited warranty is standard. Special 10-year warranty available on a job-to-job basis. Complete LED warranty terms available at www.mercltg.com. Actual performance may differ as a result of end-user environment and application. Most LED luminaires are suitable to operate in ambient temperatures from -20C (-4F) to 25C (77F). The following exclusions apply: Luminaires with optional standby lighting option, integral lighting controls options, or wireless control options. Consult factory. LM-79 testing was measured under a controlled 25C (77F) ambient operating temperature.