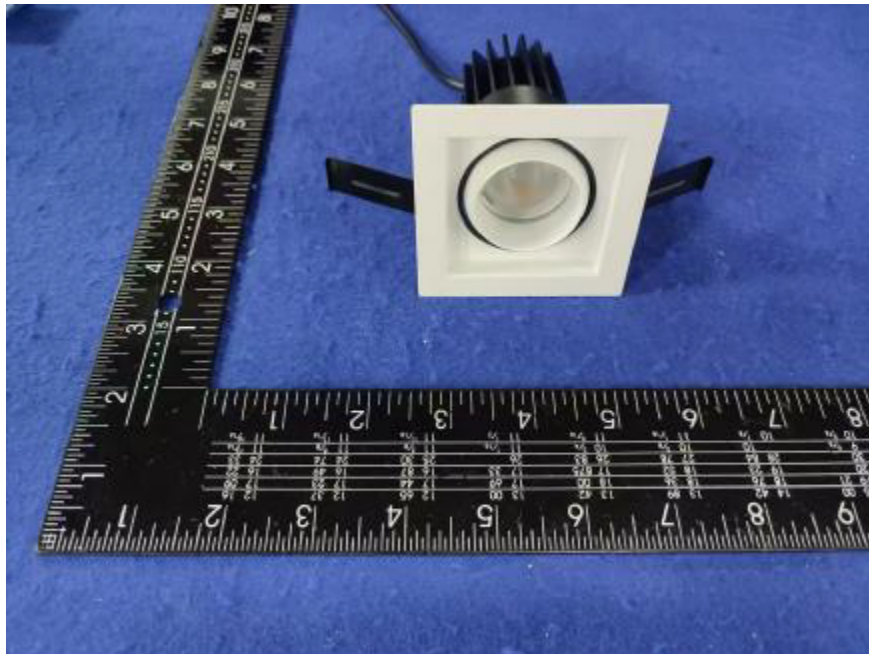


Photometric Report for each Light Engine  
used in double and triple configuration  
for Flanged and Flangeless Trim



Light Output Ratio:	81.4%	
Luminaire Power:	8.825 W	
SHR Nominal:	0.75	Calculated using the TM5
SHR Maximum:	0.85	fine grid method.

C Range: 0 - 360DEG	γ Range: 0 - 180DEG
C Interval: For a lens beam angle of 60°	γ Interval: 1.0DEG
Test Speed: HIGH	Test System: EVERFINE GO-SPEX500_V1 SYSTEM V2.00.461
Temperature: 77.54°F	Humidity: 65.0%
Operators: zoe	Test Distance: 124.409" [K=1.0000]
Test Date: 2024-8-22	Remarks: LAMP: BXRH-30G10T0-G-83 Ra: 90
	LENS: PM-1084C 50R
	NO DRIVER: 500mA
	30minutes warm-up

LUMINOUS INTENSITY DISTRIBUTION DIAGRAM

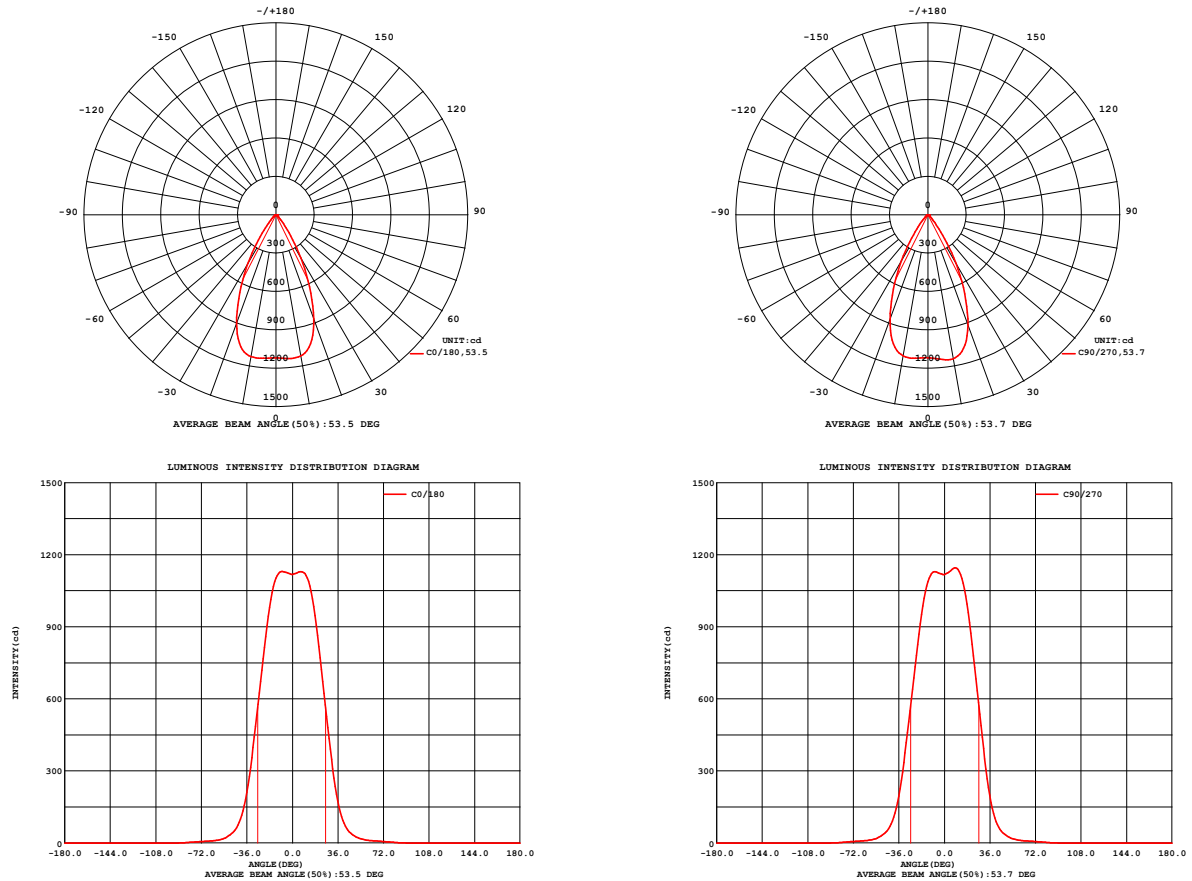


Fig. C0/C180

Fig. C90/C270

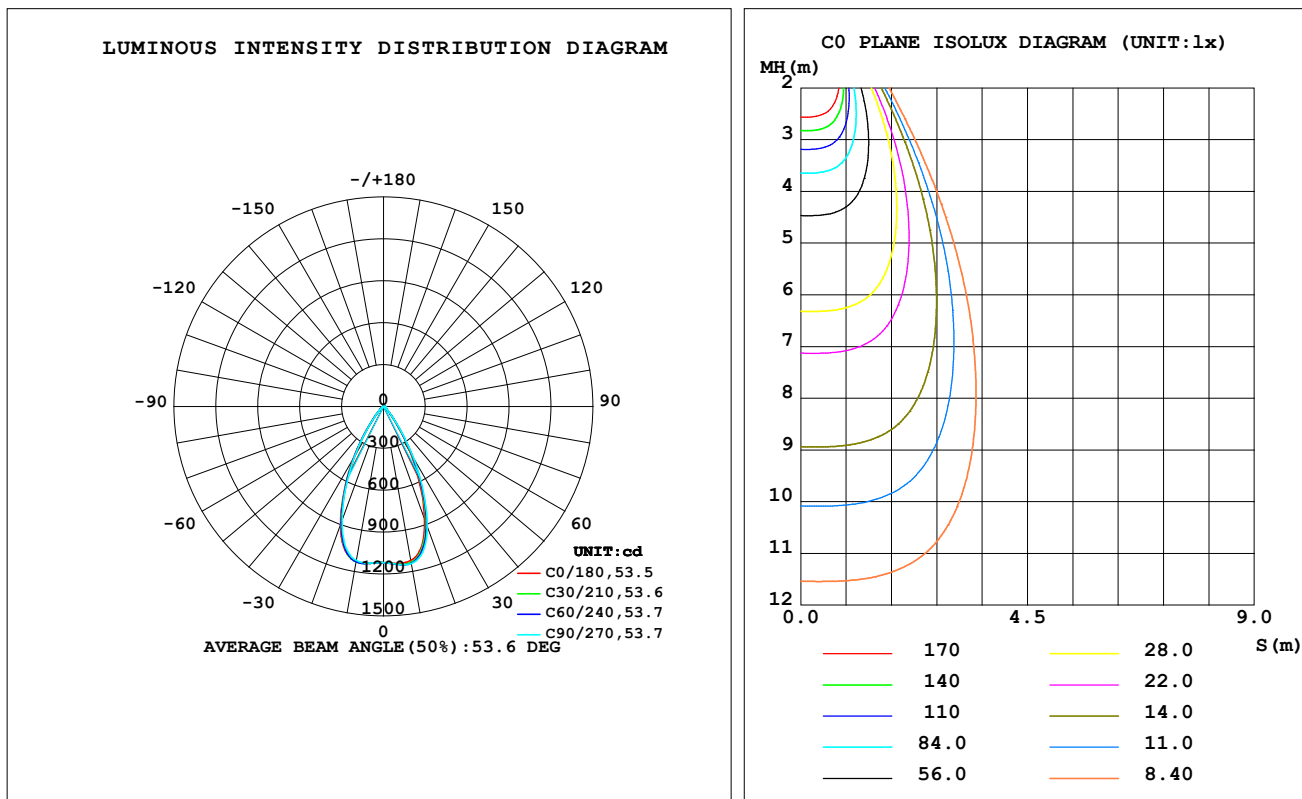
C Range: 0 - 360DEG  
C Interval: For a lens beam angle of 60°  
Test Speed: HIGH  
Temperature: 77.54°F  
Operators: zoe  
Test Date: 2024-8-22

γ Range: 0 - 180DEG  
γ Interval: 1.0DEG  
Test System: EVERFINE GO-SPEX500\_V1 SYSTEM V2.00.461  
Humidity: 65.0%  
Test Distance: 124.409" [K=1.0000]  
Remarks: LAMP: BXRH-30G10T0-G-83 Ra: 90  
LENS: PM-1084C 50R  
NO DRIVER: 500mA  
30minutes warm-up

## LUMINAIRE PHOTOMETRIC TEST REPORT

Test:U:17.651V I:0.5000A P:8.8255W PF:1.0000 Freq:49.99Hz Lamp Flux:1124.6x1 lm		
NAME: CTL-MM-1.5-30K-60-SQ-AD-OPS	TYPE:	WEIGHT:
SPEC.: 3000K	DIM.:	SERIAL No.: 2408221151
MFR.: MERCURY LIGHTING	SUR.: 0.002601m2	Shielding Angle:

DATA OF LAMP		PHOTOMETRIC DATA				Eff: 103.67 lm/W
MODEL	Brideglux	I <sub>max</sub> (cd)	1145	S/MH (C0/180)	0.82	
NOMINAL POWER (W)	9	LOR (%)	81.4	S/MH (C90/270)	0.81	
RATED VOLTAGE (V)	18	TOTAL FLUX (lm)	914.96	η UP, DN (C0-180)	0.0, 40.8	
NOMINAL FLUX (lm)	1124.6	CIE CLASS	DIRECT	η UP, DN (C180-360)	0.0, 40.6	
LAMPS INSIDE	1	η up (%)	0.0	CIBSE SHR NOM	0.75	
TEST VOLTAGE (V)	18	η down (%)	81.4	CIBSE SHR MAX	0.85	



C Range: 0 - 360DEG

C Interval: For a lens beam angle of 60°

Test Speed: HIGH

Temperature: 77.54°F

Operators: zoe

Test Date: 2024-8-22

γ Range: 0 - 180DEG

γ Interval: 1.0DEG

Test System: EVERFINE GO-SPEX500\_V1 SYSTEM V2.00.461

Humidity: 65.0%

Test Distance: 124.409" [K=1.0000]

Remarks: LAMP: BXRH-30G10T0-G-83 Ra: 90

LENS: PM-1084C 50R

NO DRIVER: 500mA

30minutes warm-up

## ZONAL FLUX DIAGRAM

## ZONAL FLUX DIAGRAM:

$\gamma$	C0	C45	C90	C135	C180	C225	C270	C315	$\gamma$	$\Phi$ zone	$\Phi$ total	%lum,lamp
10	1120	1136	1143	1129	1126	1130	1121	1112	0- 10	107.8	107.8	11.8,9.59
20	863.4	893.0	916.5	902.3	902.2	888.4	869.7	856.6	10- 20	290.9	398.7	43.6,35.5
30	390.5	418.4	440.9	438.5	441.2	429.0	417.1	404.4	20- 30	296.5	695.2	76,61.8
40	94.44	99.70	104.6	109.2	115.3	112.7	106.7	100.7	30- 40	146.0	841.2	91.9,74.8
50	26.62	27.72	27.90	29.02	30.81	30.95	29.14	27.82	40- 50	43.08	884.3	96.6,78.6
60	11.25	11.10	10.99	10.98	10.82	11.11	11.32	11.37	50- 60	15.71	900.0	98.4,80
70	6.861	6.799	6.735	6.692	6.624	6.685	6.817	6.884	60- 70	8.580	908.6	99.3,80.8
80	2.755	3.023	3.050	3.146	3.172	3.138	2.921	2.965	70- 80	5.199	913.8	99.9,81.3
90	0	0	0	0	0	0	0	0	80- 90	1.164	915.0	100,81.4
100	0	0	0	0	0	0	0	0	90-100	0	915.0	100,81.4
110	0	0	0	0	0	0	0	0	100-110	0	915.0	100,81.4
120	0	0	0	0	0	0	0	0	110-120	0	915.0	100,81.4
130	0	0	0	0	0	0	0	0	120-130	0	915.0	100,81.4
140	0	0	0	0	0	0	0	0	130-140	0	915.0	100,81.4
150	0	0	0	0	0	0	0	0	140-150	0	915.0	100,81.4
160	0	0	0	0	0	0	0	0	150-160	0	915.0	100,81.4
170	0	0	0	0	0	0	0	0	160-170	0	915.0	100,81.4
180	0	0	0	0	0	0	0	0	170-180	0	915.0	100,81.4
DEG	LUMINOUS INTENSITY:cd									UNIT:lm		

C Range: 0 - 360DEG

C Interval:For a lens beam angle of 60°

Test Speed: HIGH

Temperature:77.54°F

Operators:zoe

Test Date:2024-8-22

 $\gamma$  Range: 0 - 180DEG

 $\gamma$  Interval: 1.0DEG

Test System:EVERFINE GO-SPEX500\_V1 SYSTEM V2.00.461

Humidity:65.0%

Test Distance:124.409" [K=1.0000]

Remarks: LAMP:BXRH-30G10T0-G-83 Ra:90

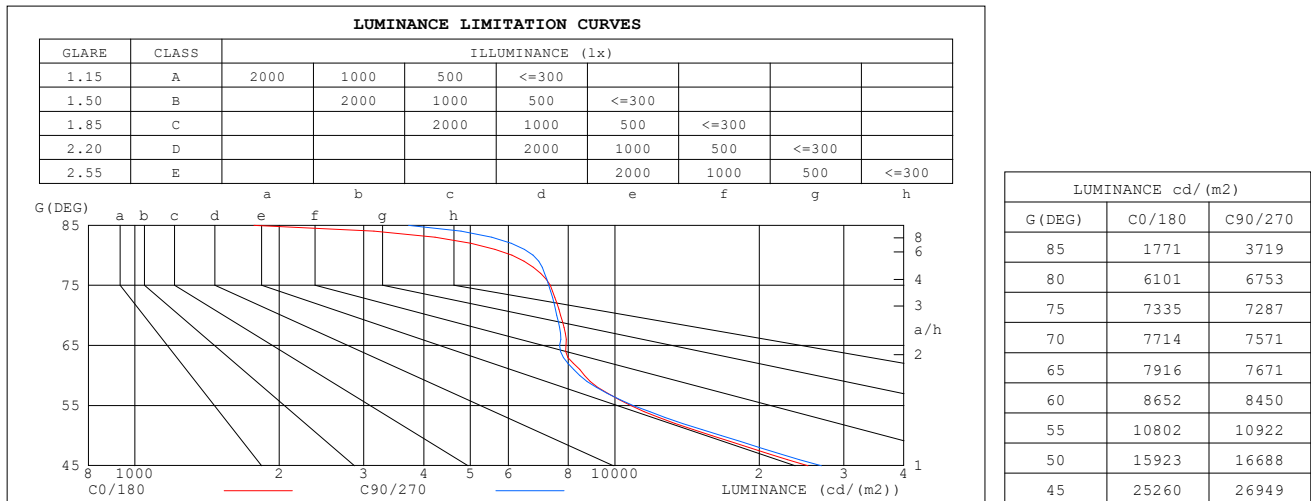
LENS:PM-1084C 50R

NO DRIVER:500mA

30minutes warm-up

**LUMINANCE LIMITATION CURVES**

<b>Test:</b> U:17.651V I:0.5000A P:8.8255W PF:1.0000 Freq:49.99Hz <b>Lamp Flux:</b> 1124.6x1 lm		
<b>NAME:</b> CTL-MM-1.5-30K-60-SQ-AD-OPS	<b>TYPE:</b>	<b>WEIGHT:</b>
<b>SPEC.:</b> 3000K	<b>DIM.:</b>	<b>SERIAL No.:</b> 2408221151
<b>MFR.:</b> MERCURY LIGHTING	<b>SUR.:</b> 0.002601m2	<b>Shielding Angle:</b>


**C Range:** 0 - 360DEG

**C Interval:** For a lens beam angle of 60°

**Test Speed:** HIGH

**Temperature:** 77.54°F

**Operators:** zoe

**Test Date:** 2024-8-22

**γ Range:** 0 - 180DEG

**γ Interval:** 1.0DEG

**Test System:** EVERFINE GO-SPEX500\_V1 SYSTEM V2.00.461

**Humidity:** 65.0%

**Test Distance:** 124.409" [K=1.0000]

**Remarks:** LAMP: BXRH-30G10T0-G-83 Ra:90

**LENS:** PM-1084C 50R

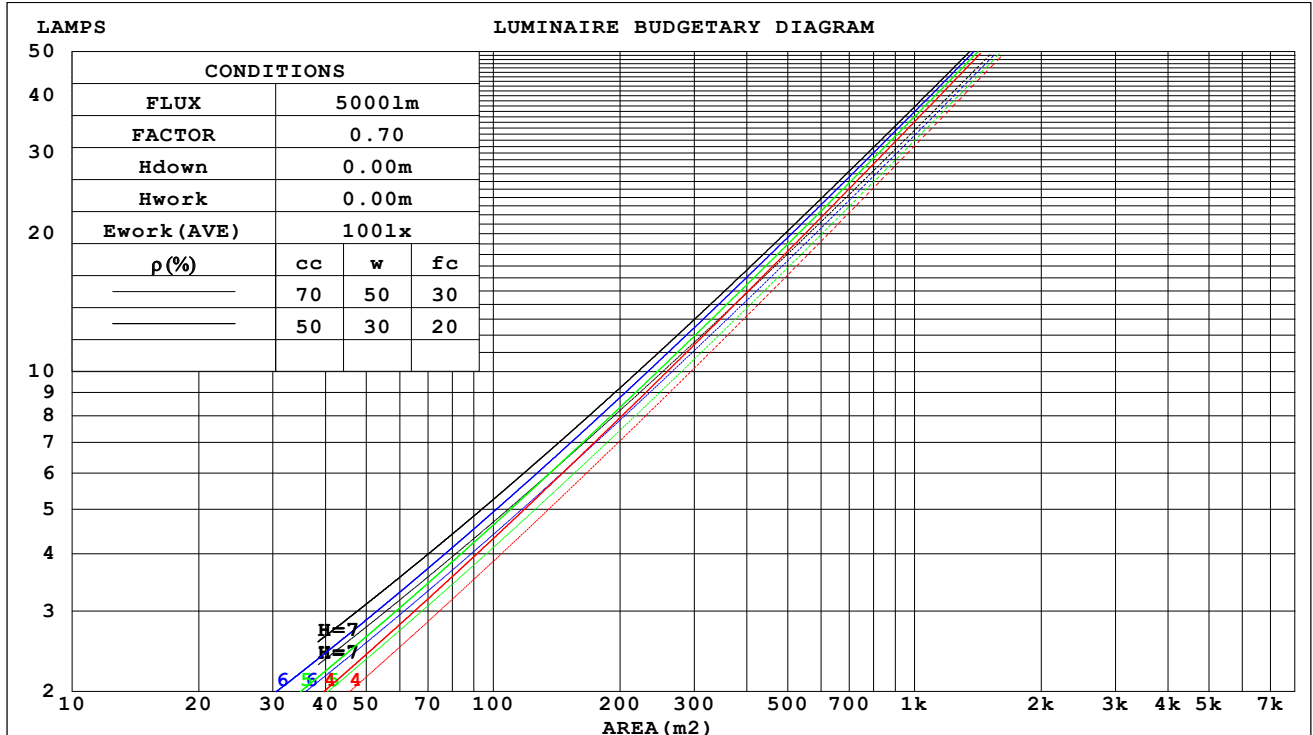
**NO DRIVER:** 500mA

**30minutes warm-up**

## CU AND LUMINAIRE BUDGETARY ESTIMATE DIAGRAM

Test:U:17.651V I:0.5000A P:8.8255W PF:1.0000 Freq:49.99Hz Lamp Flux:1124.6x1 lm		
NAME: CTL-MM-1.5-30K-60-SQ-AD-OPS	TYPE:	WEIGHT:
SPEC.: 3000K	DIM.:	SERIAL No.: 2408221151
MFR.: MERCURY LIGHTING	SUR.: 0.002601m2	Shielding Angle:

pcc	80%			70%			50%			30%			10%			0
pw	50%	30%	10%	50%	30%	10%	50%	30%	10%	50%	30%	10%	50%	30%	10%	0
pfc	20%			20%			20%			20%			20%			0
RCR	RCR:Room Cavity Ratio															



C Range: 0 - 360DEG

C Interval: For a lens beam angle of 60°

Test Speed: HIGH

Temperature: 77.54°F

Operators: zoe

Test Date: 2024-8-22

γ Range: 0 - 180DEG

γ Interval: 1.0DEG

Test System: EVERFINE GO-SPEX500\_V1 SYSTEM V2.00.461

Humidity: 65.0%

Test Distance: 124.409" [K=1.0000]

Remarks: LAMP: BXRH-30G10T0-G-83 Ra: 90

LENS: PM-1084C 50R

NO DRIVER: 500mA

30minutes warm-up

**WEC AND CCEC**

Test:U:17.651V I:0.5000A P:8.8255W PF:1.0000 Freq:49.99Hz Lamp Flux:1124.6x1 lm		
NAME: CTL-MM-1.5-30K-60-SQ-AD-OPS	TYPE:	WEIGHT:
SPEC.: 3000K	DIM.:	SERIAL No.: 2408221151
MFR.: MERCURY LIGHTING	SUR.: 0.002601m2	Shielding Angle:

pcc	80%			70%			50%			30%			10%			0
pw	50%	30%	10%	50%	30%	10%	50%	30%	10%	50%	30%	10%	50%	30%	10%	0
pfc	20%			20%			20%			20%			20%			0
RCR	RCR:Room Cavity Ratio						Wall Exitance Coefficients (WEC)									
0.0																
1.0	.145	.083	.026	.140	.080	.025	.129	.074	.024	.120	.069	.022	.111	.065	.021	
2.0	.138	.076	.023	.134	.074	.023	.125	.069	.022	.117	.066	.021	.110	.062	.020	
3.0	.131	.070	.021	.127	.068	.020	.120	.065	.020	.113	.062	.019	.107	.059	.018	
4.0	.124	.065	.019	.121	.063	.019	.115	.061	.018	.109	.058	.018	.103	.056	.017	
5.0	.118	.060	.017	.115	.059	.017	.110	.057	.017	.105	.055	.016	.100	.053	.016	
6.0	.112	.056	.016	.110	.056	.016	.105	.054	.016	.101	.052	.015	.096	.051	.015	
7.0	.107	.053	.015	.105	.052	.015	.101	.051	.015	.097	.050	.014	.093	.048	.014	
8.0	.103	.050	.014	.101	.049	.014	.097	.048	.014	.093	.047	.014	.090	.046	.013	
9.0	.098	.047	.013	.096	.047	.013	.093	.046	.013	.090	.045	.013	.087	.044	.013	
10.0	.094	.045	.013	.093	.045	.012	.089	.044	.012	.087	.043	.012	.084	.042	.012	

pcc	80%			70%			50%			30%			10%			0
pw	50%	30%	10%	50%	30%	10%	50%	30%	10%	50%	30%	10%	50%	30%	10%	0
pfc	20%			20%			20%			20%			20%			0
RCR	RCR:Room Cavity Ratio						Ceiling Cavity Exitance Coefficients(CCEC)									
0.0	.155	.155	.155	.132	.132	.132	.090	.090	.090	.052	.052	.052	.017	.017	.017	
1.0	.139	.128	.118	.119	.110	.101	.082	.076	.070	.047	.044	.041	.015	.014	.013	
2.0	.127	.108	.092	.109	.093	.079	.074	.064	.055	.043	.037	.032	.014	.012	.011	
3.0	.117	.092	.073	.100	.080	.063	.069	.055	.044	.040	.032	.026	.013	.010	.009	
4.0	.108	.080	.059	.093	.069	.051	.064	.048	.036	.037	.028	.021	.012	.009	.007	
5.0	.101	.071	.049	.087	.061	.042	.060	.043	.030	.035	.025	.018	.011	.008	.006	
6.0	.095	.063	.041	.082	.055	.035	.056	.038	.025	.033	.023	.015	.011	.007	.005	
7.0	.090	.057	.034	.077	.050	.030	.053	.035	.021	.031	.020	.013	.010	.007	.004	
8.0	.085	.052	.030	.073	.045	.026	.051	.032	.018	.029	.019	.011	.010	.006	.004	
9.0	.081	.048	.026	.070	.042	.022	.048	.029	.016	.028	.017	.009	.009	.006	.003	
10.0	.077	.044	.022	.066	.038	.020	.046	.027	.014	.027	.016	.008	.009	.005	.003	

C Range: 0 - 360DEG

C Interval:For a lens beam angle of 60°

Test Speed: HIGH

Temperature:77.54°F

Operators:zoe

Test Date:2024-8-22

γ Range: 0 - 180DEG

γ Interval: 1.0DEG

Test System:EVERFINE GO-SPEX500\_V1 SYSTEM V2.00.461

Humidity:65.0%

Test Distance:124.409" [K=1.0000]

Remarks: LAMP:BXRH-30G10T0-G-83 Ra:90

LENS:PM-1084C 50R

NO DRIVER:500mA

30minutes warm-up

UGR(Unified Glare Rating) Table

Test:U:17.651V I:0.5000A P:8.8255W PF:1.0000 Freq:49.99Hz Lamp Flux:1124.6x1 lm											
NAME: CTL-MM-1.5-30K-60-SQ-AD-OPS					TYPE:			WEIGHT:			
SPEC.: 3000K					DIM.:			SERIAL No.: 2408221151			
MFR.: MERCURY LIGHTING					SUR.: 0.002601m2			Shielding Angle:			
ceiling/cavity	0.7	0.7	0.5	0.5	0.3	0.7	0.7	0.5	0.5	0.3	
walls	0.5	0.3	0.5	0.3	0.3	0.5	0.3	0.5	0.3	0.3	
working plane	0.2	0.2	0.2	0.2	0.2	0.2	0.2	0.2	0.2	0.2	
Room dimensions	Viewed crosswise					Viewed endwise					
x = 2H y = 2H	2H	18.6	19.5	18.8	19.7	19.9	19.0	19.9	19.2	20.1	20.2
	3H	18.7	19.6	19.0	19.8	20.0	19.0	19.9	19.3	20.1	20.3
	4H	18.8	19.6	19.0	19.8	20.0	19.1	19.9	19.4	20.1	20.3
	6H	18.8	19.6	19.1	19.8	20.0	19.1	19.9	19.4	20.1	20.4
	8H	18.8	19.5	19.1	19.8	20.0	19.1	19.8	19.4	20.1	20.4
	12H	18.7	19.4	19.1	19.7	20.0	19.1	19.8	19.4	20.1	20.3
4H	2H	18.5	19.3	18.8	19.5	19.7	18.8	19.6	19.1	19.9	20.1
	3H	18.7	19.4	19.0	19.6	19.9	19.0	19.7	19.3	19.9	20.2
	4H	18.8	19.4	19.1	19.7	20.0	19.1	19.7	19.4	20.0	20.3
	6H	18.9	19.5	19.3	19.8	20.1	19.2	19.7	19.6	20.1	20.4
	8H	18.9	19.4	19.3	19.8	20.1	19.2	19.7	19.6	20.1	20.4
	12H	18.9	19.4	19.3	19.7	20.1	19.2	19.7	19.6	20.0	20.4
8H	4H	18.8	19.3	19.2	19.6	20.0	19.1	19.6	19.4	19.9	20.3
	6H	18.9	19.4	19.4	19.8	20.2	19.2	19.6	19.6	20.0	20.5
	8H	19.0	19.4	19.4	19.8	20.2	19.3	19.6	19.7	20.1	20.5
	12H	19.0	19.3	19.4	19.7	20.2	19.3	19.6	19.7	20.0	20.5
12H	4H	18.7	19.2	19.2	19.6	20.0	19.0	19.5	19.4	19.9	20.3
	6H	18.9	19.3	19.4	19.7	20.2	19.2	19.6	19.6	20.0	20.4
	8H	19.0	19.3	19.4	19.7	20.2	19.3	19.6	19.7	20.0	20.5
Variations with the observer position at spacings(CIE Pub.117):											
S = 1.0H	+ 2.1 / - 2.7					+ 2.5 / - 2.9					
1.5H	+ 3.8 / - 2.5					+ 4.2 / - 2.7					
2.0H	+ 2.5 / - 1.2					+ 2.7 / - 1.3					

CIE Pub.117, 1125 lm Total Lamp Luminous Flux Correct (8log(F/F0) = 0.4)  
 Area: 0.002601 m2

C Range: 0 - 360DEG	γ Range: 0 - 180DEG
C Interval:For a lens beam angle of 60°	γ Interval: 1.0DEG
Test Speed: HIGH	Test System:EVERFINE GO-SPEX500_V1 SYSTEM V2.00.461
Temperature:77.54°F	Humidity:65.0%
Operators:zoe	Test Distance:124.409" [K=1.0000]
Test Date:2024-8-22	Remarks: LAMP:BXRH-30G10T0-G-83 Ra:90
	LENS:PM-1084C 50R
	NO DRIVER:500mA
	30minutes warm-up



## UTILIZATION FACTORS TABLE

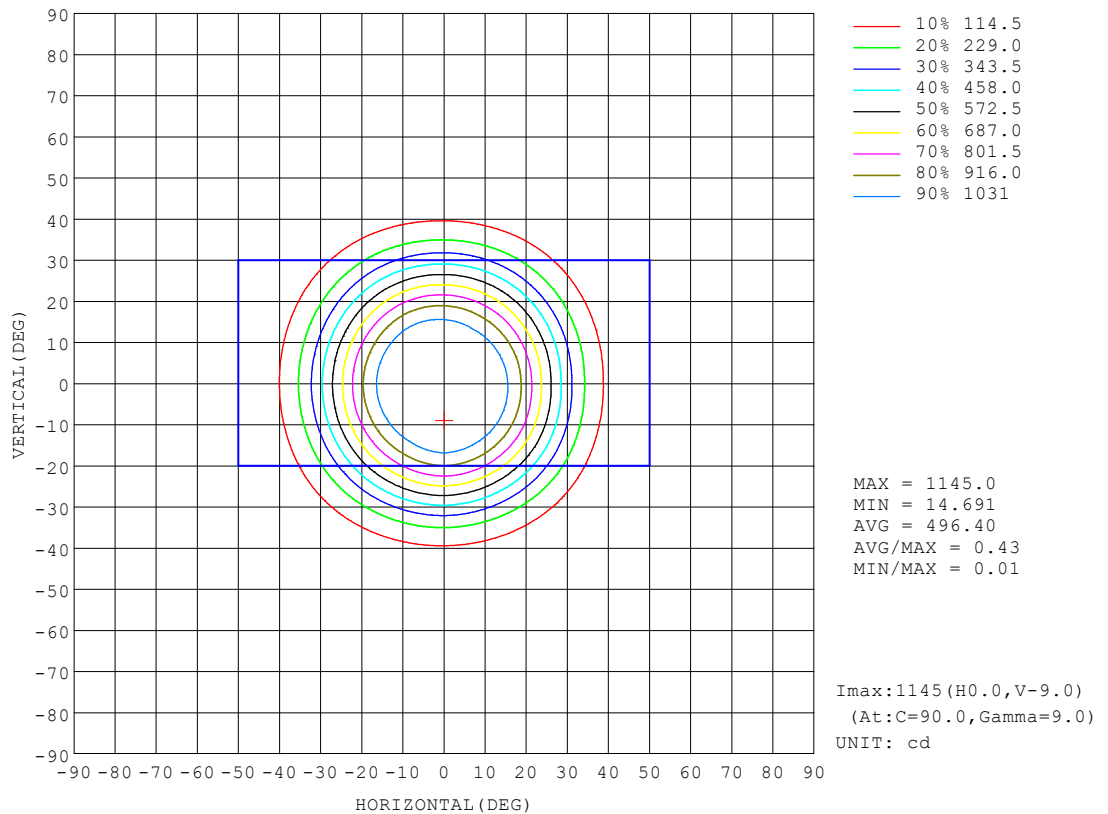
Test:U:17.651V I:0.5000A P:8.8255W PF:1.0000 Freq:49.99Hz Lamp Flux:1124.6x1 lm		
NAME: CTL-MM-1.5-30K-60-SQ-AD-OPS	TYPE:	WEIGHT:
SPEC.: 3000K	DIM.:	SERIAL No.: 2408221151
MFR.: MERCURY LIGHTING	SUR.: 0.002601m2	Shielding Angle:

REFLECTANCE										
Ceiling	0.8	0.8	0.8	0.7	0.7	0.7	0.5	0.5	0.5	0
Walls	0.7	0.5	0.3	0.7	0.5	0.3	0.7	0.5	0.3	0
Working plane	0.2	0.2	0.2	0.2	0.2	0.2	0.2	0.2	0.2	0
ROOM INDEX	UTILIZATION FACTORS (PERCENT) $k(RI) \times RCR = 5$									
$k = 0.60$	70	65	62	70	65	62	69	65	62	59
0.80	77	72	69	76	71	68	75	71	68	65
1.00	80	76	73	80	75	72	78	75	72	69
1.25	84	79	76	83	79	76	81	78	75	72
1.50	86	82	79	85	81	79	83	80	78	74
2.00	88	85	82	87	84	81	85	82	80	76
2.50	89	86	84	88	85	83	86	83	81	77
3.00	91	88	86	89	87	85	87	85	83	78
4.00	92	90	88	91	89	87	88	86	85	79
5.00	93	92	90	92	90	89	88	87	86	80
ROOM INDEX	UF (total)									Direct
According to DIN EN 13032-2 2004			Suspended					SHRNOM = 1.25		

C Range: 0 - 360DEG	$\gamma$ Range: 0 - 180DEG
C Interval: For a lens beam angle of 60°	$\gamma$ Interval: 1.0DEG
Test Speed: HIGH	Test System: EVERFINE GO-SPEX500_V1 SYSTEM V2.00.461
Temperature: 77.54°F	Humidity: 65.0%
Operators: zoe	Test Distance: 124.409" [K=1.0000]
Test Date: 2024-8-22	Remarks: LAMP: BXRH-30G10T0-G-83 Ra: 90
	LENS: PM-1084C 50R
	NO DRIVER: 500mA
	30minutes warm-up

## ISOCANDELA DIAGRAM

Test:U:17.651V I:0.5000A P:8.8255W PF:1.0000 Freq:49.99Hz Lamp Flux:1124.6x1 lm		
NAME: CTL-MM-1.5-30K-60-SQ-AD-OPS	TYPE:	WEIGHT:
SPEC.: 3000K	DIM.:	SERIAL No.: 2408221151
MFR.: MERCURY LIGHTING	SUR.: 0.002601m2	Shielding Angle:



C Range: 0 - 360DEG

C Interval:For a lens beam angle of 60°

Test Speed: HIGH

Temperature:77.54°F

Operators:zoe

Test Date:2024-8-22

γ Range: 0 - 180DEG

γ Interval: 1.0DEG

Test System:EVERFINE GO-SPEX500\_V1 SYSTEM V2.00.461

Humidity:65.0%

Test Distance:124.409" [K=1.0000]

Remarks: LAMP:BXRH-30G10T0-G-83 Ra:90

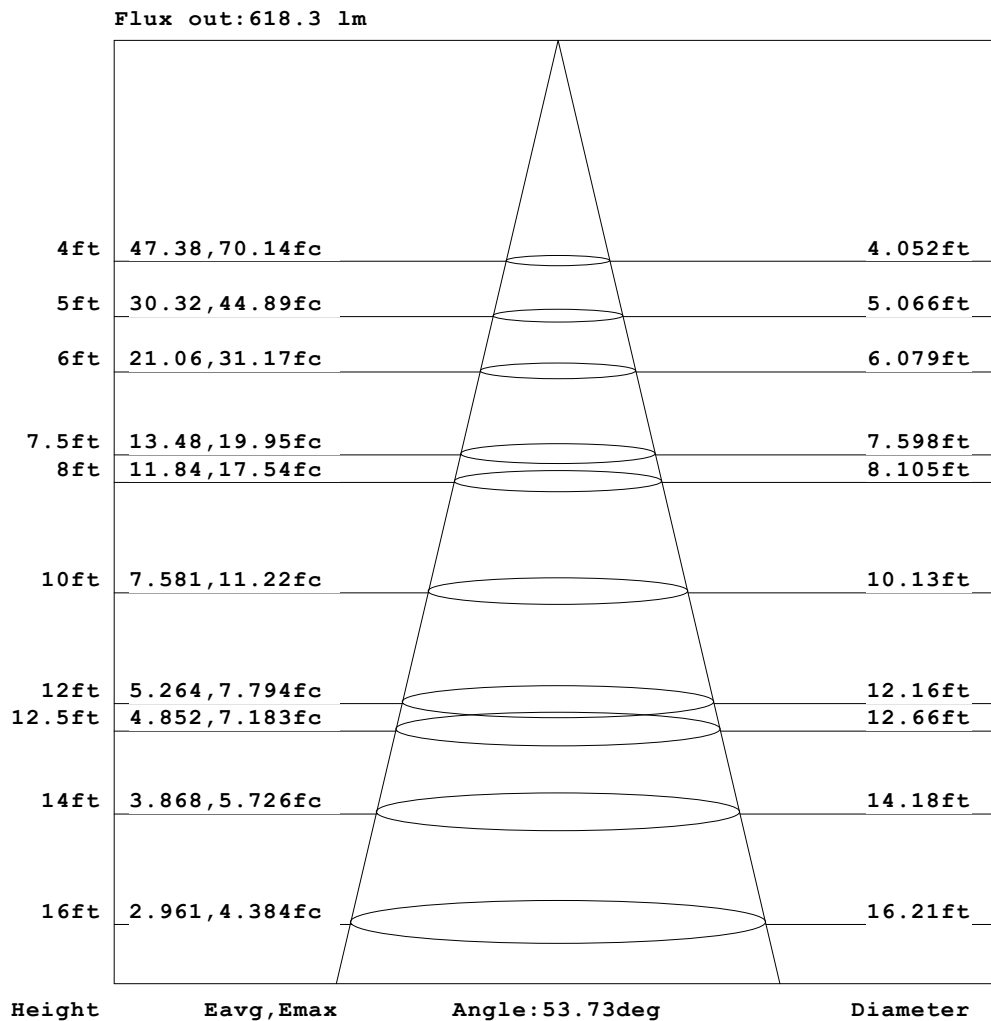
LENS:PM-1084C 50R

NO DRIVER:500mA

30minutes warm-up

**AAI Figure**

Test:U:17.651V I:0.5000A P:8.8255W PF:1.0000 Freq:49.99Hz Lamp Flux:1124.6x1 lm		
NAME: CTL-MM-1.5-30K-60-SQ-AD-OPS	TYPE:	WEIGHT:
SPEC.: 3000K	DIM.:	SERIAL No.: 2408221151
MFR.: MERCURY LIGHTING	SUR.: 0.002601m2	Shielding Angle:

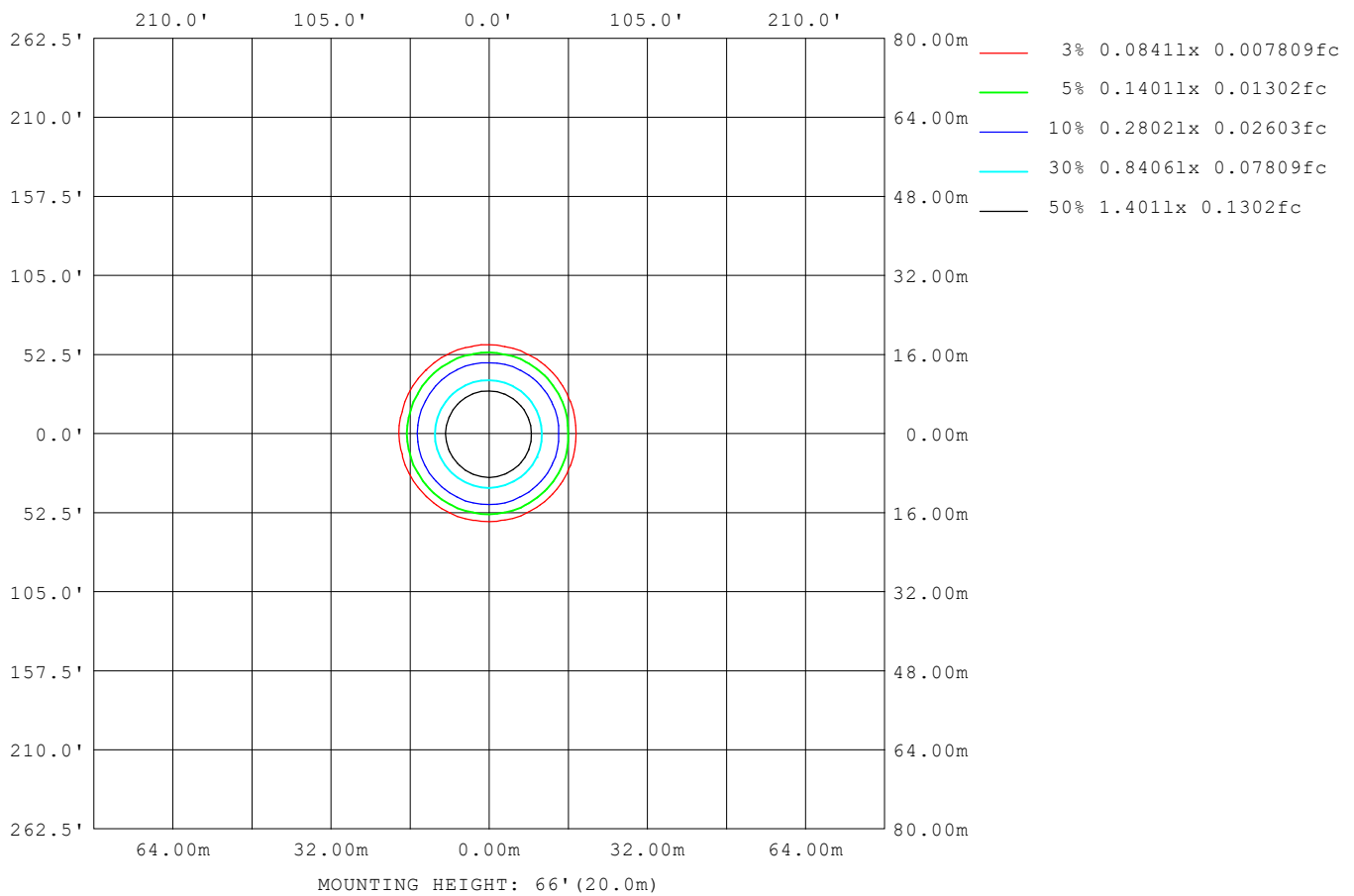


Note: The Curves indicate the illuminated area and the average illumination when the luminaire is at different distance.

C Range: 0 - 360DEG	γ Range: 0 - 180DEG
C Interval: For a lens beam angle of 60°	γ Interval: 1.0DEG
Test Speed: HIGH	Test System: EVERFINE GO-SPEX500_V1 SYSTEM V2.00.461
Temperature: 77.54°F	Humidity: 65.0%
Operators: zoe	Test Distance: 124.409" [K=1.0000]
Test Date: 2024-8-22	Remarks: LAMP: BXRH-30G10T0-G-83 Ra: 90
	LENS: PM-1084C 50R
	NO DRIVER: 500mA
	30minutes warm-up

**ISOLUX DIAGRAM**

<b>Test:</b> U:17.651V I:0.5000A P:8.8255W PF:1.0000 Freq:49.99Hz <b>Lamp Flux:</b> 1124.6x1 lm		
<b>NAME:</b> CTL-MM-1.5-30K-60-SQ-AD-OPS	<b>TYPE:</b>	<b>WEIGHT:</b>
<b>SPEC.:</b> 3000K	<b>DIM.:</b>	<b>SERIAL No.:</b> 2408221151
<b>MFR.:</b> MERCURY LIGHTING	<b>SUR.:</b> 0.002601m2	<b>Shielding Angle:</b>


**C Range:** 0 - 360DEG

**C Interval:** For a lens beam angle of 60°

**Test Speed:** HIGH

**Temperature:** 77.54°F

**Operators:** zoe

**Test Date:** 2024-8-22

**γ Range:** 0 - 180DEG

**γ Interval:** 1.0DEG

**Test System:** EVERFINE GO-SPEX500\_V1 SYSTEM V2.00.461

**Humidity:** 65.0%

**Test Distance:** 124.409" [K=1.0000]

**Remarks:** LAMP: BXRH-30G10T0-G-83 Ra:90

**LENS:** PM-1084C 50R

**NO DRIVER:** 500mA

**30minutes warm-up**

### LED Avg.L Report

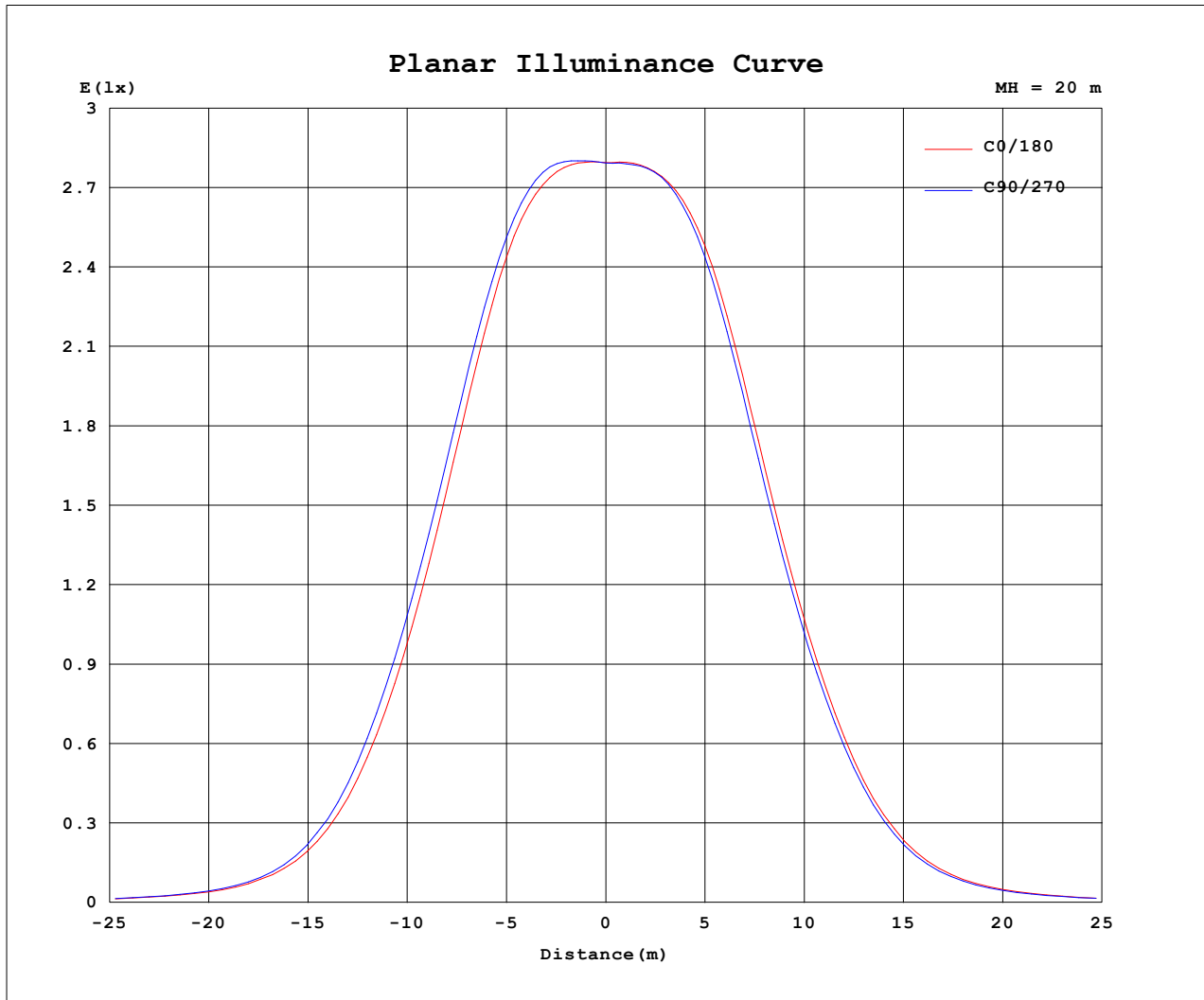
Test:U:17.651V I:0.5000A P:8.8255W PF:1.0000 Freq:49.99Hz Lamp Flux:1124.6x1 lm		
NAME: CTL-MM-1.5-30K-60-SQ-AD-OPS	TYPE:	WEIGHT:
SPEC.: 3000K	DIM.:	SERIAL No.: 2408221151
MFR.: MERCURY LIGHTING	SUR.: 0.002601m2	Shielding Angle:

AvgL	cd/m2
L_0~180 (65) av	7724
L_0~180 (75) av	7330
L_0~180 (85) av	3115
L_90~270 (65) av	7747
L_90~270 (75) av	7340
L_90~270 (85) av	3078
L_45 (65) av	7751
L_45 (75) av	7339
L_45 (85) av	3829

Standard: GB/T 29293-2012

C Range: 0 - 360DEG	γ Range: 0 - 180DEG
C Interval: For a lens beam angle of 60°	γ Interval: 1.0DEG
Test Speed: HIGH	Test System: EVERFINE GO-SPEX500_V1 SYSTEM V2.00.461
Temperature: 77.54°F	Humidity: 65.0%
Operators: zoe	Test Distance: 124.409" [K=1.0000]
Test Date: 2024-8-22	Remarks: LAMP: BXRH-30G10T0-G-83 Ra: 90
	LENS: PM-1084C 50R
	NO DRIVER: 500mA
	30minutes warm-up

### Planar Illuminance Curve



C Range: 0 - 360DEG

C Interval: For a lens beam angle of 60°

Test Speed: HIGH

Temperature: 77.54°F

Operators: zoe

Test Date: 2024-8-22

γ Range: 0 - 180DEG

γ Interval: 1.0DEG

Test System: EVERFINE GO-SPEX500\_V1 SYSTEM V2.00.461

Humidity: 65.0%

Test Distance: 124.409" [K=1.0000]

Remarks: LAMP: BXRH-30G10T0-G-83 Ra: 90

LENS: PM-1084C 50R

NO DRIVER: 500mA

30minutes warm-up

**LUMINOUS DISTRIBUTION INTENSITY DATA**

Test:U:17.651V I:0.5000A P:8.8255W PF:1.0000 Freq:49.99Hz Lamp Flux:1124.6x1 lm		
NAME: CTL-MM-1.5-30K-60-SQ-AD-OPS	TYPE:	WEIGHT:
SPEC.: 3000K	DIM.:	SERIAL No.: 2408221151
MFR.: MERCURY LIGHTING	SUR.: 0.002601m2	Shielding Angle:

Table--1

UNIT: cd

C (DEG) γ (DEG)	0	30	60	90	120	150	180	210	240	270	300	330						
0	1118	1118	1118	1118	1118	1118	1118	1118	1118	1118	1118	1118						
5	1127	1132	1135	1134	1131	1127	1127	1128	1127	1125	1124	1124						
10	1120	1133	1140	1143	1133	1125	1126	1130	1129	1121	1112	1113						
15	1045	1057	1068	1081	1066	1065	1067	1062	1059	1045	1029	1034						
20	863	885	901	917	903	902	902	890	887	870	857	857						
25	623	651	665	682	676	673	672	660	655	641	634	626						
30	391	414	423	441	438	439	441	430	428	417	409	400						
35	203	218	221	230	231	236	241	235	233	226	221	212						
40	94.4	98.8	101	105	107	112	115	114	112	107	103	97.9						
45	46.4	47.9	49.0	49.6	51.2	53.4	55.8	56.0	54.6	51.8	50.4	47.6						
50	26.6	27.4	28.0	27.9	28.5	29.5	30.8	31.2	30.7	29.1	28.5	27.1						
55	16.1	16.1	16.3	16.3	16.4	16.4	16.7	16.9	17.1	16.8	16.7	16.2						
60	11.3	11.2	11.0	11.0	11.0	11.0	10.8	11.0	11.2	11.3	11.4	11.3						
65	8.70	8.63	8.52	8.43	8.39	8.35	8.28	8.31	8.45	8.60	8.74	8.76						
70	6.86	6.84	6.76	6.74	6.71	6.67	6.62	6.64	6.73	6.82	6.89	6.88						
75	4.94	4.93	4.90	4.91	4.91	4.93	4.93	4.94	4.97	4.98	4.98	4.96						
80	2.76	2.99	3.06	3.05	3.13	3.16	3.17	3.17	3.10	2.92	3.05	2.88						
85	0.40	0.68	0.79	0.84	1.13	1.17	1.01	1.06	0.88	0.55	0.59	0.49						
90	0.00	0.00	0.00	0.00	0.00	0.00	0.00	0.00	0.00	0.00	0.00	0.00						
95	0.00	0.00	0.00	0.00	0.00	0.00	0.00	0.00	0.00	0.00	0.00	0.00						
100	0.00	0.00	0.00	0.00	0.00	0.00	0.00	0.00	0.00	0.00	0.00	0.00						
105	0.00	0.00	0.00	0.00	0.00	0.00	0.00	0.00	0.00	0.00	0.00	0.00						
110	0.00	0.00	0.00	0.00	0.00	0.00	0.00	0.00	0.00	0.00	0.00	0.00						
115	0.00	0.00	0.00	0.00	0.00	0.00	0.00	0.00	0.00	0.00	0.00	0.00						
120	0.00	0.00	0.00	0.00	0.00	0.00	0.00	0.00	0.00	0.00	0.00	0.00						
125	0.00	0.00	0.00	0.00	0.00	0.00	0.00	0.00	0.00	0.00	0.00	0.00						
130	0.00	0.00	0.00	0.00	0.00	0.00	0.00	0.00	0.00	0.00	0.00	0.00						
135	0.00	0.00	0.00	0.00	0.00	0.00	0.00	0.00	0.00	0.00	0.00	0.00						
140	0.00	0.00	0.00	0.00	0.00	0.00	0.00	0.00	0.00	0.00	0.00	0.00						
145	0.00	0.00	0.00	0.00	0.00	0.00	0.00	0.00	0.00	0.00	0.00	0.00						
150	0.00	0.00	0.00	0.00	0.00	0.00	0.00	0.00	0.00	0.00	0.00	0.00						
155	0.00	0.00	0.00	0.00	0.00	0.00	0.00	0.00	0.00	0.00	0.00	0.00						
160	0.00	0.00	0.00	0.00	0.00	0.00	0.00	0.00	0.00	0.00	0.00	0.00						
165	0.00	0.00	0.00	0.00	0.00	0.00	0.00	0.00	0.00	0.00	0.00	0.00						
170	0.00	0.00	0.00	0.00	0.00	0.00	0.00	0.00	0.00	0.00	0.00	0.00						
175	0.00	0.00	0.00	0.00	0.00	0.00	0.00	0.00	0.00	0.00	0.00	0.00						
180	0.00	0.00	0.00	0.00	0.00	0.00	0.00	0.00	0.00	0.00	0.00	0.00						

C Range: 0 - 360DEG

C Interval: For a lens beam angle of 60°

Test Speed: HIGH

Temperature: 77.54°F

Operators: zoe

Test Date: 2024-8-22

γ Range: 0 - 180DEG

γ Interval: 1.0DEG

Test System: EVERFINE GO-SPEX500\_V1 SYSTEM V2.00.461

Humidity: 65.0%

Test Distance: 124.409" [K=1.0000]

Remarks: LAMP: BXRH-30G10T0-G-83 Ra: 90

LENS: PM-1084C 50R

NO DRIVER: 500mA

30minutes warm-up