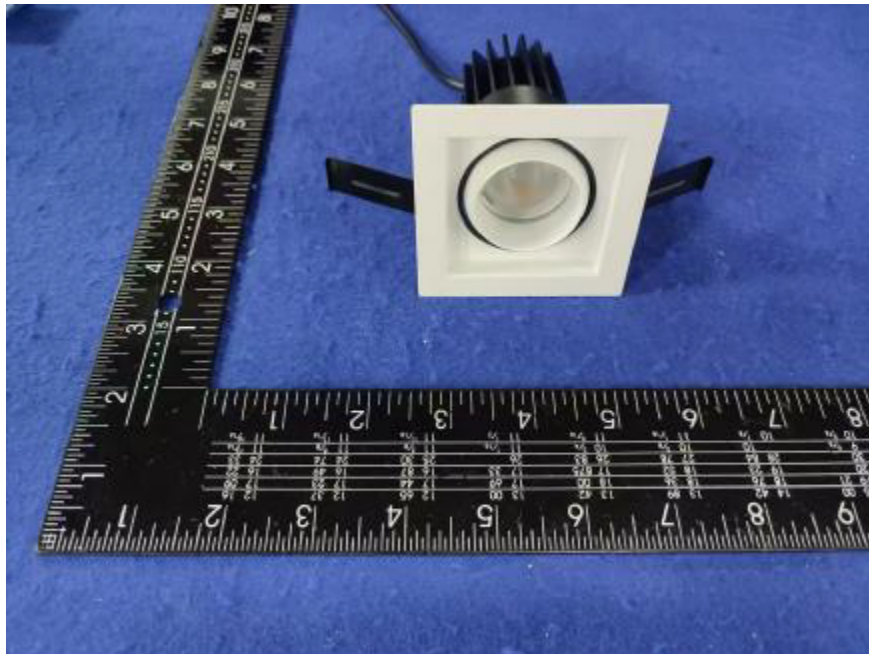


Photometric Report for each Light Engine  
used in double and triple configuration  
for Flanged and Flangeless Trim



Light Output Ratio:	84.6%	
Luminaire Power:	8.829 W	
SHR Nominal:	0.50	Calculated using the TM5
SHR Maximum:	0.65	fine grid method.

C Range: 0 - 360DEG	γ Range: 0 - 180DEG
C Interval: For a lens beam angle of 36°	γ Interval: 1.0DEG
Test Speed: HIGH	Test System: EVERFINE GO-SPEX500_V1 SYSTEM V2.00.461
Temperature: 77.54 °F	Humidity: 65.0%
Operators: zoe	Test Distance: 124.409" [K=1.0000]
Test Date: 2024-8-22	Remarks: LAMP: BXRH-30G10T0-G-83 Ra: 90
	LENS: PM-1084B 36R
	NO DRIVER: 500mA
	30minutes warm-up

LUMINOUS INTENSITY DISTRIBUTION DIAGRAM

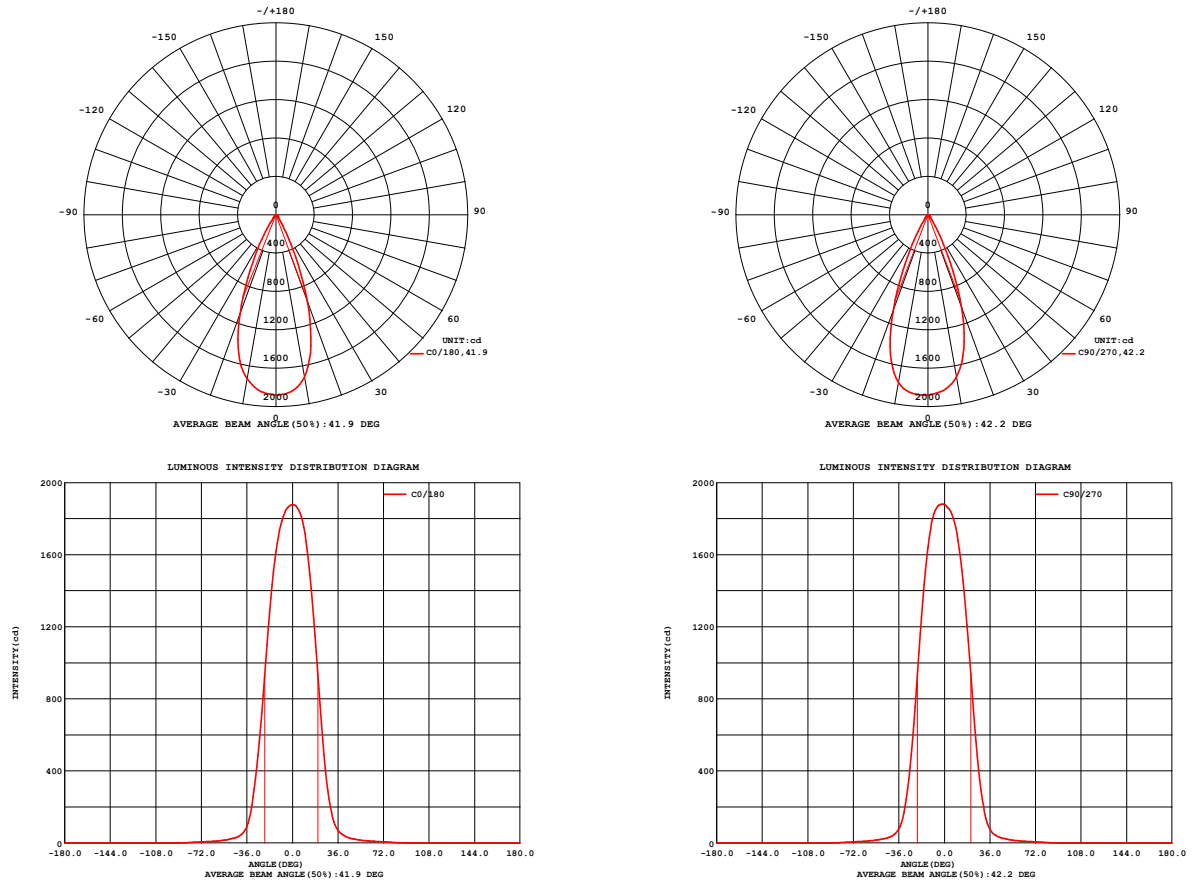


Fig. C0/C180

Fig. C90/C270

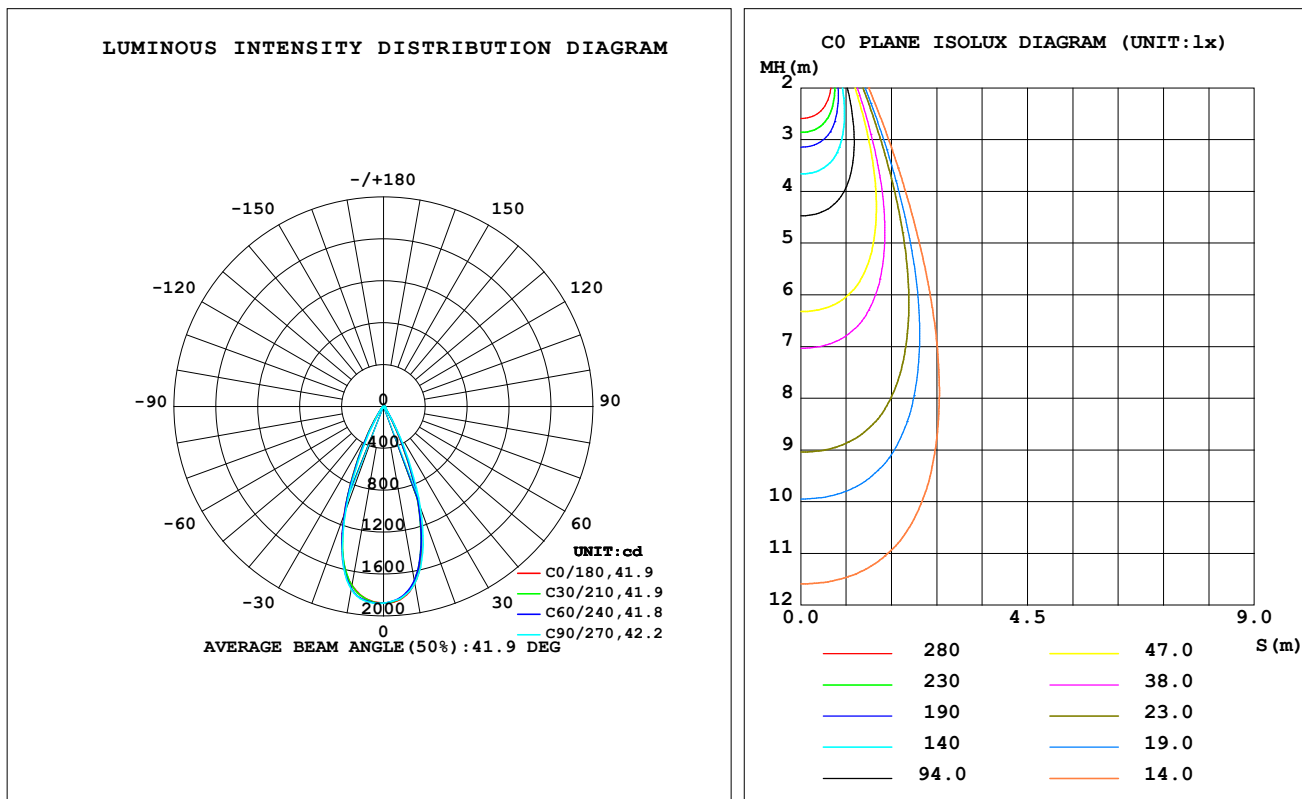
C Range: 0 - 360DEG  
C Interval: For a lens beam angle of 36°  
Test Speed: HIGH  
Temperature: 77.54 °F  
Operators: zoe  
Test Date: 2024-8-22

γ Range: 0 - 180DEG  
γ Interval: 1.0DEG  
Test System: EVERFINE GO-SPEX500\_V1 SYSTEM V2.00.461  
Humidity: 65.0%  
Test Distance: 124.409" [K=1.0000]  
Remarks: LAMP: BXRH-30G10T0-G-83 Ra: 90  
LENS: PM-1084B 36R  
NO DRIVER: 500mA  
30minutes warm-up

## LUMINAIRE PHOTOMETRIC TEST REPORT

Test:U:17.658V I:0.5000A P:8.8290W PF:1.0000 Freq:49.99Hz Lamp Flux:1124.6x1 lm		
NAME: CTL-MM-1.5-30K-36-SQ-AD-OPS	TYPE:	WEIGHT:
SPEC.: 3000K	DIM.:	SERIAL No.: 2408221150
MFR.: MERCURY LIGHTING	SUR.: 0.002601m2	Shielding Angle:

DATA OF LAMP		PHOTOMETRIC DATA Eff: 107.81 lm/W			
MODEL	Brideglux	I <sub>max</sub> (cd)	1881	S/MH (C0/180)	0.67
NOMINAL POWER (W)	9	LOR (%)	84.6	S/MH (C90/270)	0.64
RATED VOLTAGE (V)	18	TOTAL FLUX (lm)	951.89	η UP, DN (C0-180)	0.0, 41.5
NOMINAL FLUX (lm)	1124.6	CIE CLASS	DIRECT	η UP, DN (C180-360)	0.0, 43.2
LAMPS INSIDE	1	η up (%)	0.0	CIBSE SHR NOM	0.50
TEST VOLTAGE (V)	18	η down (%)	84.6	CIBSE SHR MAX	0.65



C Range: 0 - 360DEG

C Interval: For a lens beam angle of 36°

Test Speed: HIGH

Temperature: 77.54 °F

Operators: zoe

Test Date: 2024-8-22

γ Range: 0 - 180DEG

γ Interval: 1.0DEG

Test System: EVERFINE GO-SPEX500\_V1 SYSTEM V2.00.461

Humidity: 65.0%

Test Distance: 124.409" [K=1.0000]

Remarks: LAMP: BXRH-30G10T0-G-83 Ra: 90

LENS: PM-1084B 36R

NO DRIVER: 500mA

30minutes warm-up

## ZONAL FLUX DIAGRAM

**ZONAL FLUX DIAGRAM:**

$\gamma$	C0	C45	C90	C135	C180	C225	C270	C315	$\gamma$	$\Phi$ zone	$\Phi$ total	%lum,lamp
10	1717	1692	1715	1723	1736	1752	1775	1753	0- 10	173.0	173.0	18.2,15.4
20	957.4	956.6	1031	1082	1100	1091	1061	1008	10- 20	395.7	568.6	59.7,50.6
30	201.4	215.2	241.5	275.9	301.6	284.9	242.9	215.3	20- 30	263.3	831.9	87.4,74
40	45.23	44.85	45.27	46.93	48.35	47.09	45.04	44.51	30- 40	68.42	900.3	94.6,80.1
50	20.29	20.29	20.54	20.68	20.37	20.39	20.59	20.66	40- 50	23.09	923.4	97,82.1
60	11.28	11.10	11.07	10.93	10.58	10.67	11.23	11.53	50- 60	13.55	937.0	98.4,83.3
70	7.083	6.969	6.829	6.663	6.488	6.569	6.882	7.114	60- 70	8.645	945.6	99.3,84.1
80	2.775	2.981	2.946	2.999	2.961	2.971	2.841	2.972	70- 80	5.166	950.8	99.9,84.5
90	0	0	0	0	0	0	0	0	80- 90	1.101	951.9	100,84.6
100	0	0	0	0	0	0	0	0	90-100	0	951.9	100,84.6
110	0	0	0	0	0	0	0	0	100-110	0	951.9	100,84.6
120	0	0	0	0	0	0	0	0	110-120	0	951.9	100,84.6
130	0	0	0	0	0	0	0	0	120-130	0	951.9	100,84.6
140	0	0	0	0	0	0	0	0	130-140	0	951.9	100,84.6
150	0	0	0	0	0	0	0	0	140-150	0	951.9	100,84.6
160	0	0	0	0	0	0	0	0	150-160	0	951.9	100,84.6
170	0	0	0	0	0	0	0	0	160-170	0	951.9	100,84.6
180	0	0	0	0	0	0	0	0	170-180	0	951.9	100,84.6
DEG	LUMINOUS INTENSITY:cd									UNIT:lm		

C Range: 0 - 360DEG

C Interval:For a lens beam angle of 36°

Test Speed: HIGH

Temperature:77.54 °F

Operators:zoe

Test Date:2024-8-22

 $\gamma$  Range: 0 - 180DEG

 $\gamma$  Interval: 1.0DEG

Test System:EVERFINE GO-SPEX500\_V1 SYSTEM V2.00.461

Humidity:65.0%

Test Distance:124.409" [K=1.0000]

Remarks: LAMP:BXRH-30G10T0-G-83 Ra:90

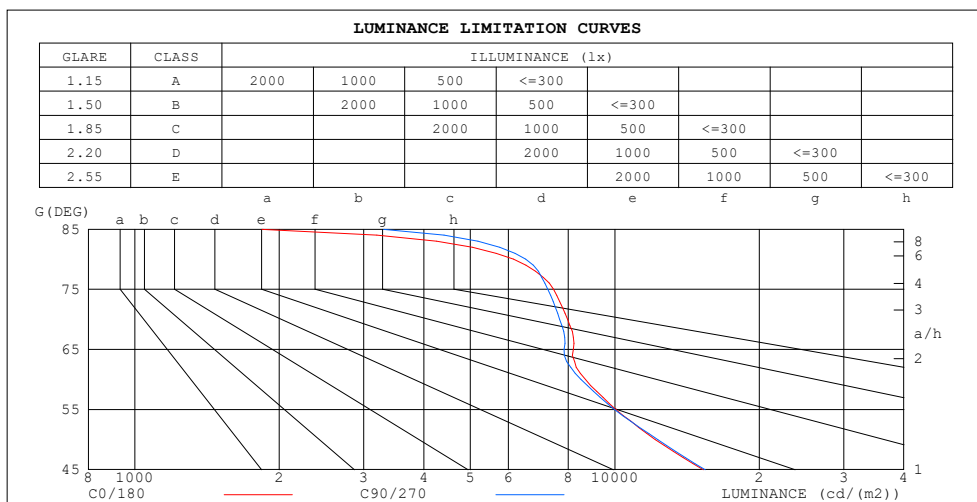
LENS:PM-1084B 36R

NO DRIVER:500mA

30minutes warm-up

## LUMINANCE LIMITATION CURVES

Test:U:17.658V I:0.5000A P:8.8290W PF:1.0000 Freq:49.99Hz Lamp Flux:1124.6x1 lm		
NAME: CTL-MM-1.5-30K-36-SQ-AD-OPS	TYPE:	WEIGHT:
SPEC.: 3000K	DIM.:	SERIAL No.: 2408221150
MFR.: MERCURY LIGHTING	SUR.: 0.002601m2	Shielding Angle:



LUMINANCE cd/(m2)		
G (DEG)	C0/180	C90/270
85	1840	3298
80	6149	6521
75	7452	7248
70	7969	7675
65	8195	7843
60	8684	8510
55	10059	9994
50	12146	12285
45	15285	15428

C Range: 0 - 360DEG

C Interval: For a lens beam angle of 36°

Test Speed: HIGH

Temperature: 77.54 °F

Operators: zoe

Test Date: 2024-8-22

γ Range: 0 - 180DEG

γ Interval: 1.0DEG

Test System: EVERFINE GO-SPEX500\_V1 SYSTEM V2.00.461

Humidity: 65.0%

Test Distance: 124.409" [K=1.0000]

Remarks: LAMP: BXRH-30G10T0-G-83 Ra: 90

LENS: PM-1084B 36R

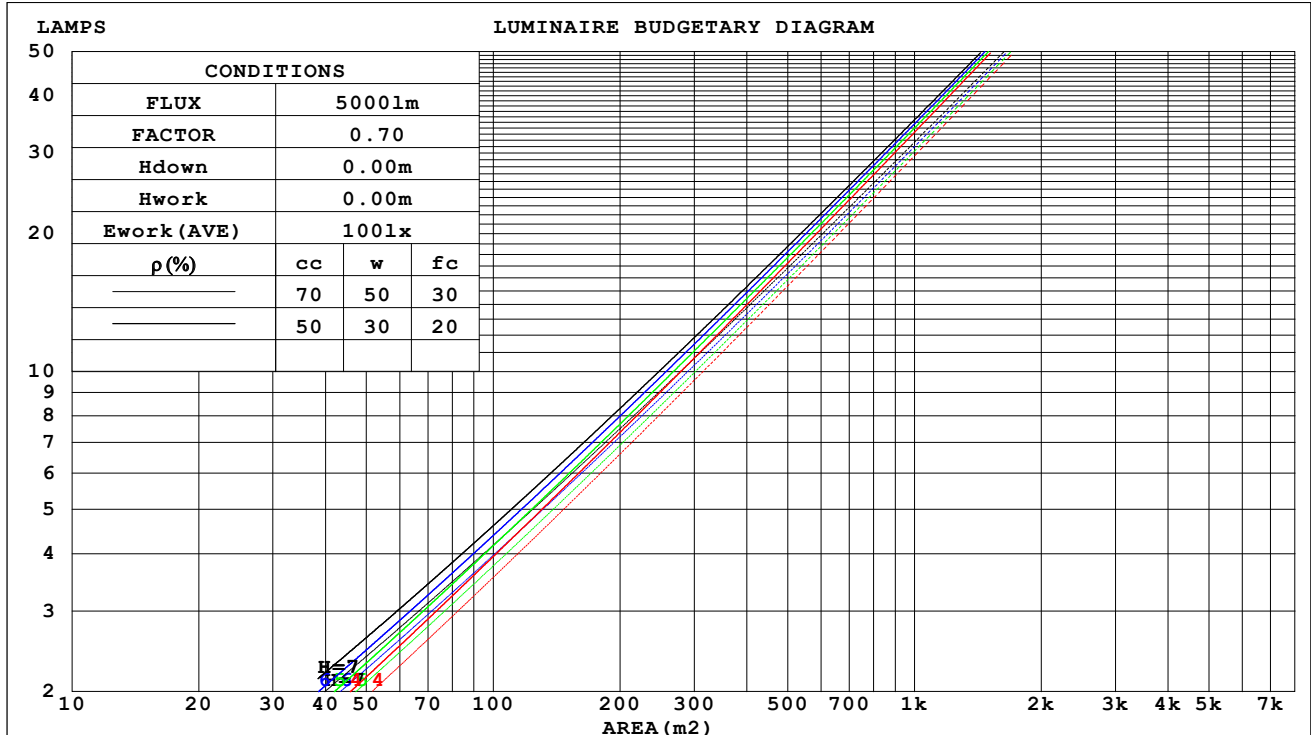
NO DRIVER: 500mA

30minutes warm-up

## CU AND LUMINAIRE BUDGETARY ESTIMATE DIAGRAM

Test:U:17.658V I:0.5000A P:8.8290W PF:1.0000 Freq:49.99Hz Lamp Flux:1124.6x1 lm		
NAME: CTL-MM-1.5-30K-36-SQ-AD-OPS	TYPE:	WEIGHT:
SPEC.: 3000K	DIM.:	SERIAL No.: 2408221150
MFR.: MERCURY LIGHTING	SUR.: 0.002601m2	Shielding Angle:

pcc	80%			70%			50%			30%			10%			0
pw	50%	30%	10%	50%	30%	10%	50%	30%	10%	50%	30%	10%	50%	30%	10%	0
pfc	20%			20%			20%			20%			20%			0
RCR	RCR:Room Cavity Ratio															



C Range: 0 - 360DEG

C Interval: For a lens beam angle of 36°

Test Speed: HIGH

Temperature: 77.54 °F

Operators: zoe

Test Date: 2024-8-22

γ Range: 0 - 180DEG

γ Interval: 1.0DEG

Test System: EVERFINE GO-SPEX500\_V1 SYSTEM V2.00.461

Humidity: 65.0%

Test Distance: 124.409" [K=1.0000]

Remarks: LAMP: BXRH-30G10T0-G-83 Ra: 90

LENS: PM-1084B 36R

NO DRIVER: 500mA

30minutes warm-up

**WEC AND CCEC**

Test:U:17.658V I:0.5000A P:8.8290W PF:1.0000 Freq:49.99Hz Lamp Flux:1124.6x1 lm		
NAME: CTL-MM-1.5-30K-36-SQ-AD-OPS	TYPE:	WEIGHT:
SPEC.: 3000K	DIM.:	SERIAL No.: 2408221150
MFR.: MERCURY LIGHTING	SUR.: 0.002601m2	Shielding Angle:

pcc	80%			70%			50%			30%			10%			0
p <sub>w</sub>	50%	30%	10%	50%	30%	10%	50%	30%	10%	50%	30%	10%	50%	30%	10%	0
p <sub>fc</sub>	20%			20%			20%			20%			20%			0
RCR	RCR:Room Cavity Ratio						Wall Exitance Coefficients(WEC)									
0.0																
1.0	.138	.079	.025	.133	.076	.024	.122	.070	.022	.112	.065	.021	.103	.060	.019	
2.0	.130	.071	.022	.125	.069	.021	.116	.065	.020	.108	.061	.019	.101	.057	.018	
3.0	.122	.065	.019	.118	.063	.019	.111	.060	.018	.104	.057	.017	.097	.054	.017	
4.0	.115	.060	.018	.112	.059	.017	.106	.056	.017	.100	.053	.016	.094	.051	.016	
5.0	.109	.056	.016	.106	.055	.016	.101	.052	.015	.096	.050	.015	.091	.048	.015	
6.0	.104	.052	.015	.101	.051	.015	.096	.049	.014	.092	.048	.014	.088	.046	.014	
7.0	.099	.049	.014	.096	.048	.014	.092	.047	.013	.088	.045	.013	.085	.044	.013	
8.0	.094	.046	.013	.092	.045	.013	.089	.044	.013	.085	.043	.012	.082	.042	.012	
9.0	.090	.044	.012	.088	.043	.012	.085	.042	.012	.082	.041	.012	.079	.040	.012	
10.0	.087	.041	.012	.085	.041	.011	.082	.040	.011	.079	.039	.011	.076	.038	.011	

pcc	80%			70%			50%			30%			10%			0
p <sub>w</sub>	50%	30%	10%	50%	30%	10%	50%	30%	10%	50%	30%	10%	50%	30%	10%	0
p <sub>fc</sub>	20%			20%			20%			20%			20%			0
RCR	RCR:Room Cavity Ratio						Ceiling Cavity Exitance Coefficients(CCEC)									
0.0	.161	.161	.161	.138	.138	.138	.094	.094	.094	.054	.054	.054	.017	.017	.017	
1.0	.144	.133	.124	.123	.114	.106	.084	.079	.074	.049	.046	.043	.016	.015	.014	
2.0	.130	.112	.097	.112	.097	.084	.076	.067	.059	.044	.039	.034	.014	.013	.011	
3.0	.119	.096	.078	.102	.083	.068	.070	.058	.047	.040	.034	.028	.013	.011	.009	
4.0	.109	.083	.064	.094	.072	.055	.064	.050	.039	.037	.029	.023	.012	.010	.008	
5.0	.101	.073	.053	.087	.063	.046	.060	.044	.032	.035	.026	.019	.011	.008	.006	
6.0	.094	.065	.044	.081	.056	.039	.056	.039	.027	.032	.023	.016	.010	.008	.005	
7.0	.088	.059	.038	.076	.051	.033	.053	.036	.023	.031	.021	.014	.010	.007	.005	
8.0	.083	.053	.032	.072	.046	.028	.050	.032	.020	.029	.019	.012	.009	.006	.004	
9.0	.079	.048	.028	.068	.042	.024	.047	.030	.017	.027	.017	.010	.009	.006	.003	
10.0	.075	.045	.025	.064	.039	.021	.045	.027	.015	.026	.016	.009	.008	.005	.003	

C Range: 0 - 360DEG

C Interval:For a lens beam angle of 36°

Test Speed: HIGH

Temperature:77.54 °F

Operators:zoe

Test Date:2024-8-22

γ Range: 0 - 180DEG

γ Interval: 1.0DEG

Test System:EVERFINE GO-SPEX500\_V1 SYSTEM V2.00.461

Humidity:65.0%

Test Distance:124.409" [K=1.0000]

Remarks: LAMP:BXRH-30G10T0-G-83 Ra:90

LENS:PM-1084B 36R

NO DRIVER:500mA

30minutes warm-up

UGR(Unified Glare Rating) Table

Test:U:17.658V I:0.5000A P:8.8290W PF:1.0000 Freq:49.99Hz Lamp Flux:1124.6x1 lm											
NAME: CTL-MM-1.5-30K-36-SQ-AD-OPS					TYPE:			WEIGHT:			
SPEC.: 3000K					DIM.:			SERIAL No.: 2408221150			
MFR.: MERCURY LIGHTING					SUR.: 0.002601m2			Shielding Angle:			
ceiling/cavity	0.7	0.7	0.5	0.5	0.3	0.7	0.7	0.5	0.5	0.3	
walls	0.5	0.3	0.5	0.3	0.3	0.5	0.3	0.5	0.3	0.3	
working plane	0.2	0.2	0.2	0.2	0.2	0.2	0.2	0.2	0.2	0.2	
Room dimensions		Viewed crosswise					Viewed endwise				
x = 2H y = 2H	14.3	15.1	14.5	15.2	15.4	14.5	15.3	14.7	15.5	15.6	
	3H	14.9	15.7	15.2	15.9	16.1	15.1	15.9	15.3	16.0	
	4H	15.3	16.0	15.6	16.2	16.4	15.4	16.1	15.7	16.3	
	6H	15.5	16.2	15.8	16.4	16.7	15.6	16.3	15.9	16.6	
	8H	15.6	16.2	15.9	16.5	16.7	15.7	16.3	16.0	16.6	
	12H	15.5	16.2	15.9	16.4	16.7	15.7	16.3	16.0	16.6	
4H	2H	14.4	15.2	14.7	15.4	15.6	14.7	15.4	14.9	15.8	
	3H	15.3	16.0	15.7	16.2	16.5	15.5	16.1	15.8	16.3	
	4H	15.8	16.4	16.1	16.7	17.0	15.9	16.5	16.2	16.7	
	6H	16.2	16.7	16.5	17.0	17.3	16.2	16.7	16.6	17.1	
	8H	16.2	16.7	16.6	17.0	17.4	16.3	16.8	16.7	17.2	
	12H	16.2	16.6	16.6	17.0	17.4	16.3	16.8	16.8	17.1	
8H	4H	15.9	16.4	16.3	16.8	17.1	16.0	16.5	16.4	16.8	
	6H	16.4	16.8	16.8	17.2	17.6	16.5	16.9	16.9	17.3	
	8H	16.5	16.9	17.0	17.3	17.7	16.6	17.0	17.1	17.4	
	12H	16.5	16.8	17.0	17.3	17.7	16.7	17.0	17.1	17.4	
12H	4H	15.9	16.4	16.3	16.7	17.1	16.0	16.4	16.4	16.8	
	6H	16.4	16.8	16.9	17.2	17.6	16.5	16.8	16.9	17.2	
	8H	16.6	16.9	17.0	17.3	17.8	16.7	17.0	17.1	17.4	
Variations with the observer position at spacings(CIE Pub.117):											
S = 1.0H	+ 0.7 / - 0.8					+ 0.8 / - 0.8					
1.5H	+ 1.4 / - 0.6					+ 1.5 / - 0.6					
2.0H	+ 0.9 / - 0.6					+ 0.9 / - 0.6					

CIE Pub.117, 1125 lm Total Lamp Luminous Flux Correct (8log(F/F0) = 0.4)  
 Area: 0.002601 m2

C Range: 0 - 360DEG

C Interval:For a lens beam angle of 36°

Test Speed: HIGH

Temperature:77.54 °F

Operators:zoe

Test Date:2024-8-22

γ Range: 0 - 180DEG

γ Interval: 1.0DEG

Test System:EVERFINE GO-SPEX500\_V1 SYSTEM V2.00.461

Humidity:65.0%

Test Distance:124.409" [K=1.0000]

Remarks: LAMP:BXRH-30G10T0-G-83 Ra:90

LENS:PM-1084B 36R

NO DRIVER:500mA

30minutes warm-up



## UTILIZATION FACTORS TABLE

Test:U:17.658V I:0.5000A P:8.8290W PF:1.0000 Freq:49.99Hz Lamp Flux:1124.6x1 lm		
NAME: CTL-MM-1.5-30K-36-SQ-AD-OPS	TYPE:	WEIGHT:
SPEC.: 3000K	DIM.:	SERIAL No.: 2408221150
MFR.: MERCURY LIGHTING	SUR.: 0.002601m2	Shielding Angle:

REFLECTANCE										
Ceiling	0.8	0.8	0.8	0.7	0.7	0.7	0.5	0.5	0.5	0
Walls	0.7	0.5	0.3	0.7	0.5	0.3	0.7	0.5	0.3	0
Working plane	0.2	0.2	0.2	0.2	0.2	0.2	0.2	0.2	0.2	0
ROOM INDEX	UTILIZATION FACTORS (PERCENT) $k(RI) \times RCR = 5$									
$k = 0.60$	75	69	66	74	69	66	74	69	66	63
0.80	81	76	73	80	76	73	79	75	72	69
1.00	84	80	77	84	79	76	82	79	76	73
1.25	88	83	80	87	83	80	85	82	79	76
1.50	90	86	83	89	85	83	87	84	82	78
2.00	92	88	86	91	88	85	88	86	84	80
2.50	93	90	88	92	89	87	89	87	85	80
3.00	95	92	90	93	91	89	90	88	87	81
4.00	96	94	92	95	93	91	92	90	89	83
5.00	97	96	94	96	94	93	92	91	90	84
ROOM INDEX	UF (total)									Direct
According to DIN EN 13032-2 2004			Suspended					SHRNOM = 1.25		

C Range: 0 - 360DEG

C Interval: For a lens beam angle of 36°

Test Speed: HIGH

Temperature: 77.54 °F

Operators: zoe

Test Date: 2024-8-22

γ Range: 0 - 180DEG

γ Interval: 1.0DEG

Test System: EVERFINE GO-SPEX500\_V1 SYSTEM V2.00.461

Humidity: 65.0%

Test Distance: 124.409" [K=1.0000]

Remarks: LAMP: BXRH-30G10T0-G-83 Ra: 90

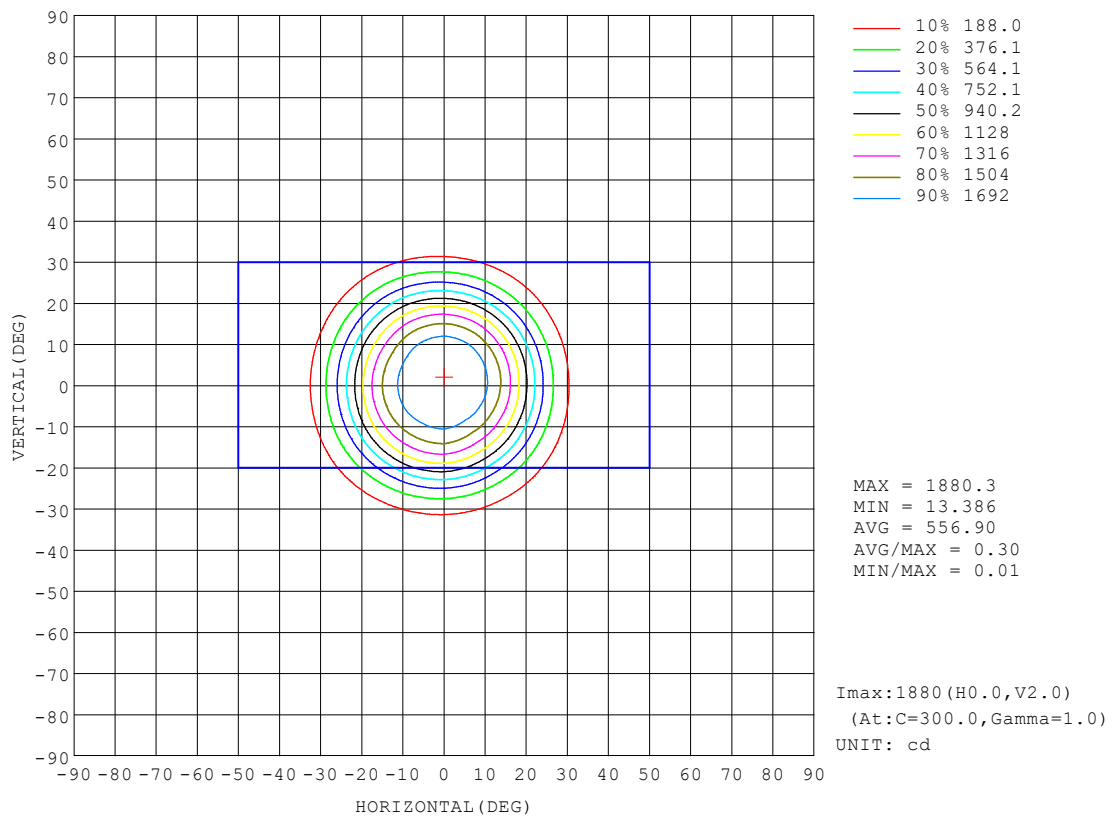
LENS: PM-1084B 36R

NO DRIVER: 500mA

30minutes warm-up

## ISOCANDELA DIAGRAM

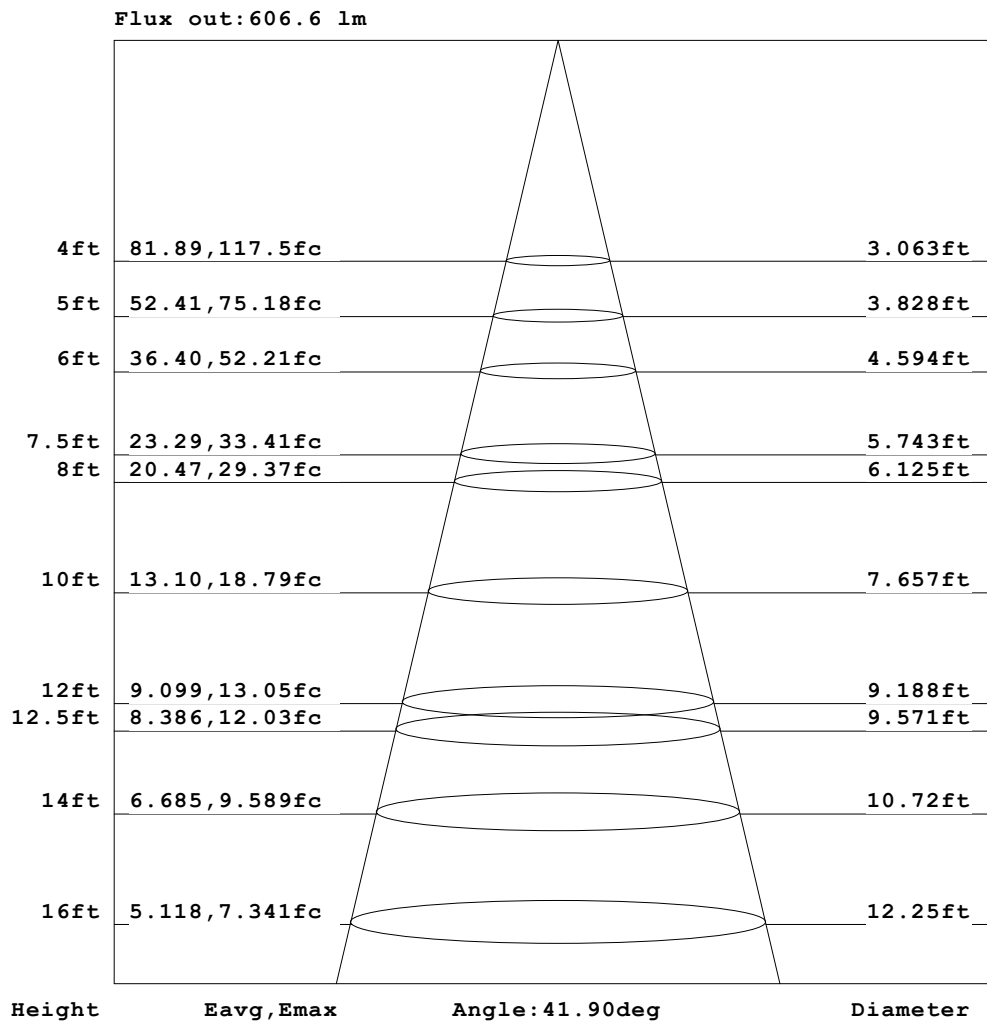
Test:U:17.658V I:0.5000A P:8.8290W PF:1.0000 Freq:49.99Hz Lamp Flux:1124.6x1 lm		
NAME: CTL-MM-1.5-30K-36-SQ-AD-OPS	TYPE:	WEIGHT:
SPEC.: 3000K	DIM.:	SERIAL No.: 2408221150
MFR.: MERCURY LIGHTING	SUR.: 0.002601m2	Shielding Angle:



C Range: 0 - 360DEG	γ Range: 0 - 180DEG
C Interval: For a lens beam angle of 36°	γ Interval: 1.0DEG
Test Speed: HIGH	Test System: EVERFINE GO-SPEX500_V1 SYSTEM V2.00.461
Temperature: 77.54 °F	Humidity: 65.0%
Operators: zoe	Test Distance: 124.409" [K=1.0000]
Test Date: 2024-8-22	Remarks: LAMP: BXRH-30G10T0-G-83 Ra: 90
	LENS: PM-1084B 36R
	NO DRIVER: 500mA
	30minutes warm-up

**AAI Figure**

Test:U:17.658V I:0.5000A P:8.8290W PF:1.0000 Freq:49.99Hz Lamp Flux:1124.6x1 lm		
NAME: CTL-MM-1.5-30K-36-SQ-AD-OPS	TYPE:	WEIGHT:
SPEC.: 3000K	DIM.:	SERIAL No.: 2408221150
MFR.: MERCURY LIGHTING	SUR.: 0.002601m2	Shielding Angle:

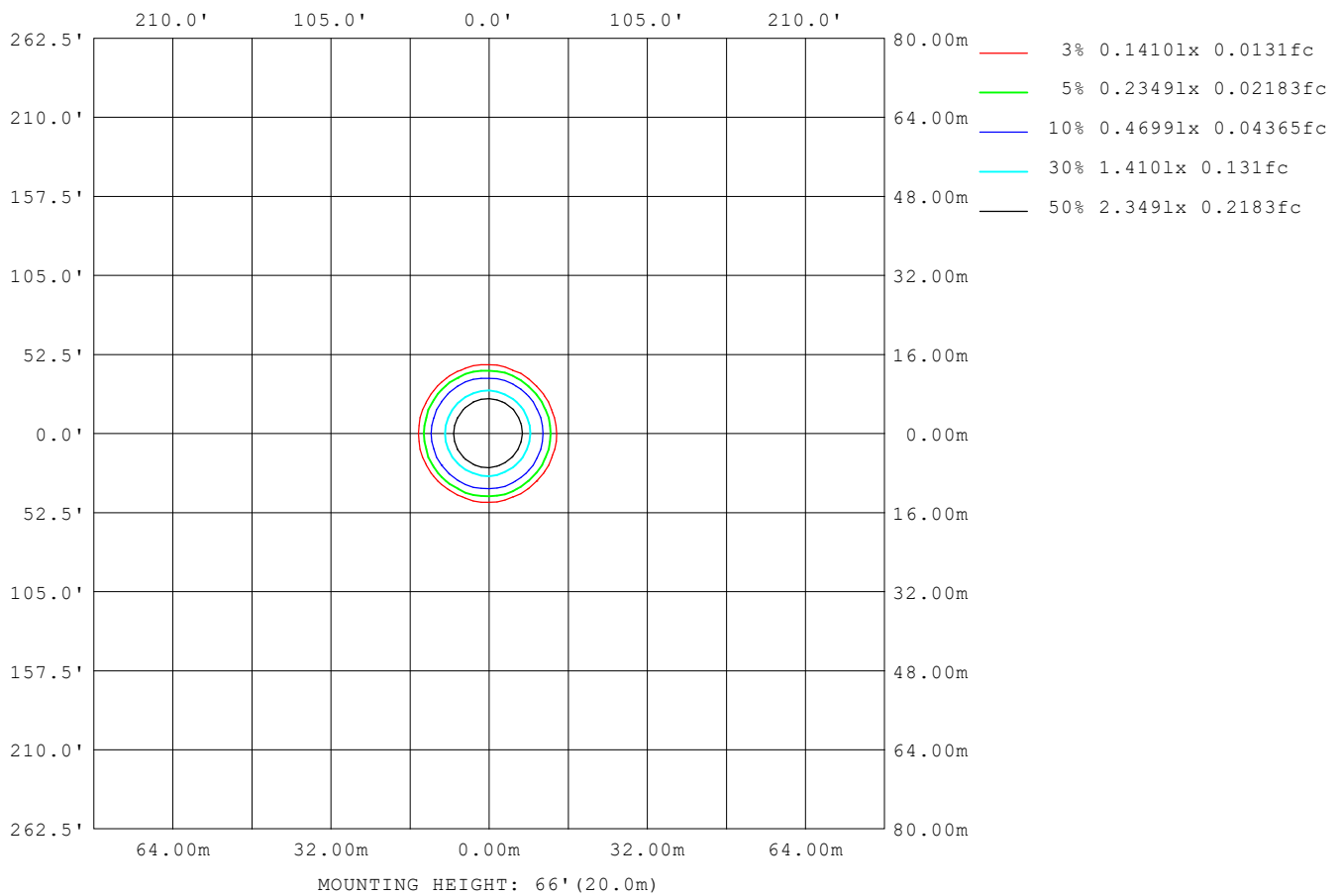


Note: The Curves indicate the illuminated area and the average illumination when the luminaire is at different distance.

C Range: 0 - 360DEG	γ Range: 0 - 180DEG
C Interval: For a lens beam angle of 36°	γ Interval: 1.0DEG
Test Speed: HIGH	Test System: EVERFINE GO-SPEX500_V1 SYSTEM V2.00.461
Temperature: 77.54 °F	Humidity: 65.0%
Operators: zoe	Test Distance: 124.409" [K=1.0000]
Test Date: 2024-8-22	Remarks: LAMP: BXRH-30G10T0-G-83 Ra:90
	LENS: PM-1084B 36R
	NO DRIVER: 500mA
	30minutes warm-up

## ISOLUX DIAGRAM

Test:U:17.658V I:0.5000A P:8.8290W PF:1.0000 Freq:49.99Hz Lamp Flux:1124.6x1 lm		
NAME: CTL-MM-1.5-30K-36-SQ-AD-OPS	TYPE:	WEIGHT:
SPEC.: 3000K	DIM.:	SERIAL No.: 2408221150
MFR.: MERCURY LIGHTING	SUR.: 0.002601m2	Shielding Angle:



C Range: 0 - 360DEG

C Interval: For a lens beam angle of 36°

Test Speed: HIGH

Temperature: 77.54 °F

Operators: zoe

Test Date: 2024-8-22

γ Range: 0 - 180DEG

γ Interval: 1.0DEG

Test System: EVERFINE GO-SPEX500\_V1 SYSTEM V2.00.461

Humidity: 65.0%

Test Distance: 124.409" [K=1.0000]

Remarks: LAMP: BXRH-30G10T0-G-83 Ra: 90

LENS: PM-1084B 36R

NO DRIVER: 500mA

30minutes warm-up

### LED Avg.L Report

Test:U:17.658V I:0.5000A P:8.8290W PF:1.0000 Freq:49.99Hz Lamp Flux:1124.6x1 lm		
NAME: CTL-MM-1.5-30K-36-SQ-AD-OPS	TYPE:	WEIGHT:
SPEC.: 3000K	DIM.:	SERIAL No.: 2408221150
MFR.: MERCURY LIGHTING	SUR.: 0.002601m2	Shielding Angle:

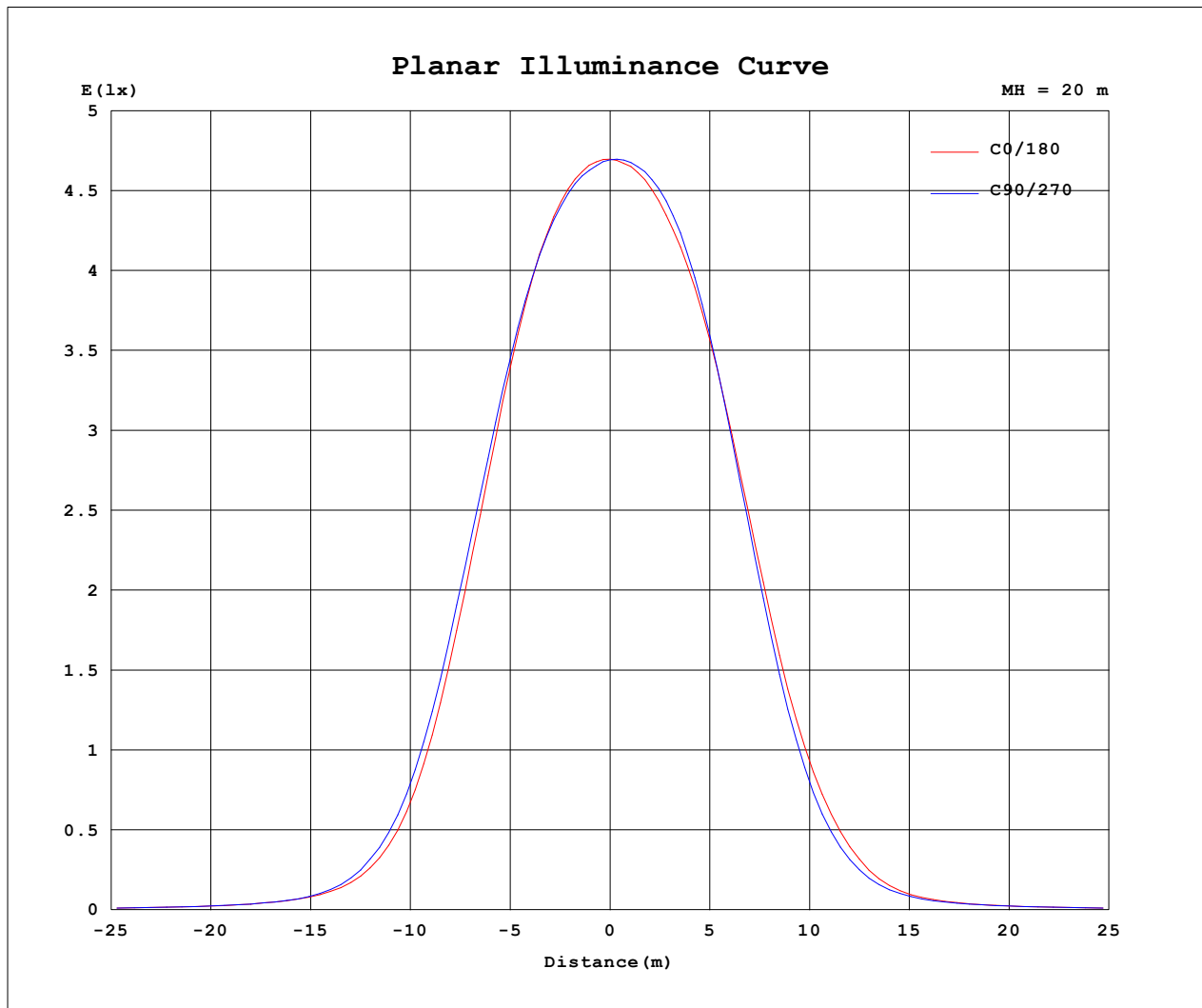
AvgL	cd/m2
L_0~180 (65) av	7788
L_0~180 (75) av	7252
L_0~180 (85) av	2753
L_90~270 (65) av	7887
L_90~270 (75) av	7299
L_90~270 (85) av	2754
L_45 (65) av	7855
L_45 (75) av	7281
L_45 (85) av	3493

Standard: GB/T 29293-2012

C Range: 0 - 360DEG  
 C Interval: For a lens beam angle of 36°  
 Test Speed: HIGH  
 Temperature: 77.54 °F  
 Operators: zoe  
 Test Date: 2024-8-22

γ Range: 0 - 180DEG  
 γ Interval: 1.0DEG  
 Test System: EVERFINE GO-SPEX500\_V1 SYSTEM V2.00.461  
 Humidity: 65.0%  
 Test Distance: 124.409" [K=1.0000]  
 Remarks: LAMP: BXRH-30G10T0-G-83 Ra: 90  
 LENS: PM-1084B 36R  
 NO DRIVER: 500mA  
 30minutes warm-up

### Planar Illuminance Curve



C Range: 0 - 360DEG

C Interval: For a lens beam angle of 36°

Test Speed: HIGH

Temperature: 77.54 °F

Operators: zoe

Test Date: 2024-8-22

γ Range: 0 - 180DEG

γ Interval: 1.0DEG

Test System: EVERFINE GO-SPEX500\_V1 SYSTEM V2.00.461

Humidity: 65.0%

Test Distance: 124.409" [K=1.0000]

Remarks: LAMP: BXRH-30G10T0-G-83 Ra: 90

LENS: PM-1084B 36R

NO DRIVER: 500mA

30minutes warm-up

**LUMINOUS DISTRIBUTION INTENSITY DATA**

Test:U:17.658V I:0.5000A P:8.8290W PF:1.0000 Freq:49.99Hz Lamp Flux:1124.6x1 lm		
NAME: CTL-MM-1.5-30K-36-SQ-AD-OPS	TYPE:	WEIGHT:
SPEC.: 3000K	DIM.:	SERIAL No.: 2408221150
MFR.: MERCURY LIGHTING	SUR.: 0.002601m2	Shielding Angle:

Table--1

UNIT: cd

C (DEG) γ (DEG)	0	30	60	90	120	150	180	210	240	270	300	330						
0	1878	1878	1878	1878	1878	1878	1878	1878	1878	1878	1878	1878						
5	1849	1844	1832	1839	1834	1841	1847	1850	1863	1869	1869	1861						
10	1717	1696	1689	1715	1715	1731	1736	1738	1766	1775	1767	1739						
15	1414	1385	1390	1448	1460	1489	1503	1490	1512	1508	1486	1449						
20	957	948	965	1031	1068	1095	1100	1089	1093	1061	1027	989						
25	490	498	515	564	595	629	642	635	618	573	536	506						
30	201	212	218	242	261	291	302	294	276	243	225	206						
35	85.1	84.9	89.3	93.3	97.7	109	112	108	103	92.3	86.6	84.1						
40	45.2	44.9	44.8	45.3	45.6	48.2	48.4	47.4	46.8	45.0	44.6	44.4						
45	28.1	27.9	27.8	28.4	28.8	29.1	28.7	28.5	28.4	28.3	28.6	28.3						
50	20.3	20.2	20.3	20.5	20.7	20.7	20.4	20.2	20.5	20.6	20.8	20.5						
55	15.0	14.8	14.8	14.9	15.0	14.8	14.5	14.4	14.8	15.1	15.4	15.2						
60	11.3	11.1	11.0	11.1	11.0	10.8	10.6	10.5	10.8	11.2	11.6	11.5						
65	9.00	8.88	8.73	8.62	8.49	8.31	8.12	8.11	8.33	8.72	9.08	9.13						
70	7.08	7.03	6.91	6.83	6.72	6.60	6.49	6.48	6.65	6.88	7.10	7.13						
75	5.01	4.98	4.91	4.88	4.83	4.80	4.75	4.75	4.85	4.95	5.04	5.05						
80	2.77	2.96	3.00	2.95	3.00	3.00	2.96	2.99	2.95	2.84	3.02	2.92						
85	0.42	0.68	0.75	0.75	0.99	1.01	0.83	0.88	0.78	0.50	0.58	0.51						
90	0.00	0.00	0.00	0.00	0.00	0.00	0.00	0.00	0.00	0.00	0.00	0.00						
95	0.00	0.00	0.00	0.00	0.00	0.00	0.00	0.00	0.00	0.00	0.00	0.00						
100	0.00	0.00	0.00	0.00	0.00	0.00	0.00	0.00	0.00	0.00	0.00	0.00						
105	0.00	0.00	0.00	0.00	0.00	0.00	0.00	0.00	0.00	0.00	0.00	0.00						
110	0.00	0.00	0.00	0.00	0.00	0.00	0.00	0.00	0.00	0.00	0.00	0.00						
115	0.00	0.00	0.00	0.00	0.00	0.00	0.00	0.00	0.00	0.00	0.00	0.00						
120	0.00	0.00	0.00	0.00	0.00	0.00	0.00	0.00	0.00	0.00	0.00	0.00						
125	0.00	0.00	0.00	0.00	0.00	0.00	0.00	0.00	0.00	0.00	0.00	0.00						
130	0.00	0.00	0.00	0.00	0.00	0.00	0.00	0.00	0.00	0.00	0.00	0.00						
135	0.00	0.00	0.00	0.00	0.00	0.00	0.00	0.00	0.00	0.00	0.00	0.00						
140	0.00	0.00	0.00	0.00	0.00	0.00	0.00	0.00	0.00	0.00	0.00	0.00						
145	0.00	0.00	0.00	0.00	0.00	0.00	0.00	0.00	0.00	0.00	0.00	0.00						
150	0.00	0.00	0.00	0.00	0.00	0.00	0.00	0.00	0.00	0.00	0.00	0.00						
155	0.00	0.00	0.00	0.00	0.00	0.00	0.00	0.00	0.00	0.00	0.00	0.00						
160	0.00	0.00	0.00	0.00	0.00	0.00	0.00	0.00	0.00	0.00	0.00	0.00						
165	0.00	0.00	0.00	0.00	0.00	0.00	0.00	0.00	0.00	0.00	0.00	0.00						
170	0.00	0.00	0.00	0.00	0.00	0.00	0.00	0.00	0.00	0.00	0.00	0.00						
175	0.00	0.00	0.00	0.00	0.00	0.00	0.00	0.00	0.00	0.00	0.00	0.00						
180	0.00	0.00	0.00	0.00	0.00	0.00	0.00	0.00	0.00	0.00	0.00	0.00						

C Range: 0 - 360DEG

C Interval: For a lens beam angle of 36°

Test Speed: HIGH

Temperature: 77.54 °F

Operators: zoe

Test Date: 2024-8-22

γ Range: 0 - 180DEG

γ Interval: 1.0DEG

Test System: EVERFINE GO-SPEX500\_V1 SYSTEM V2.00.461

Humidity: 65.0%

Test Distance: 124.409" [K=1.0000]

Remarks: LAMP: BXRH-30G10T0-G-83 Ra: 90

LENS: PM-1084B 36R

NO DRIVER: 500mA

30minutes warm-up