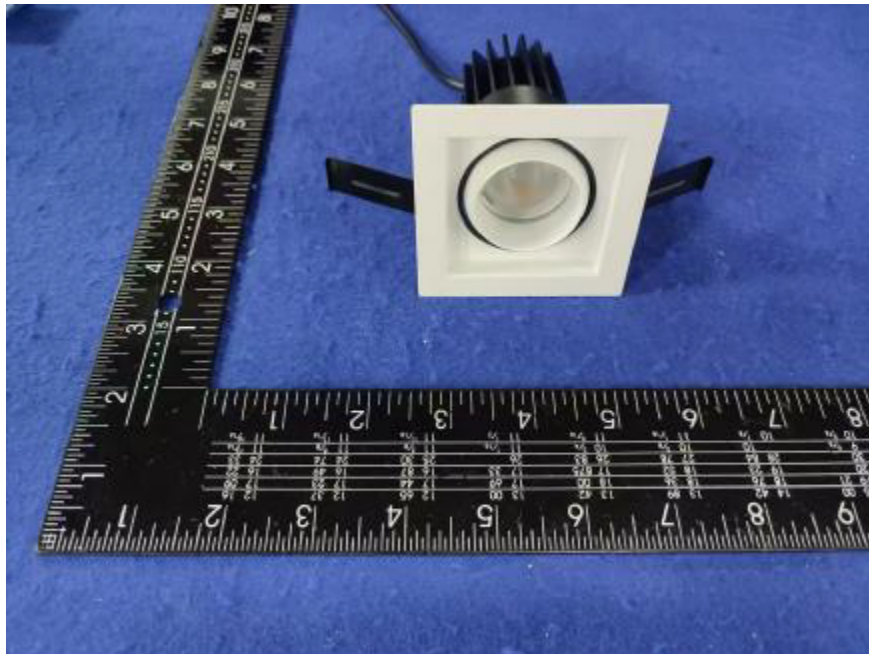


Photometric Report for each Light Engine
used in double and triple configuration
for Flanged and Flangeless Trim



Light Output Ratio:	85.6%	
Luminaire Power:	8.827 W	
SHR Nominal:	0.00	Calculated using the TM5
SHR Maximum:	0.30	fine grid method.

C Range: 0 - 360DEG
C Interval: For a lens beam angle of 24°
Test Speed: HIGH
Temperature: 77.54 °F
Operators: zoe
Test Date: 2024-8-22

γ Range: 0 - 180DEG
γ Interval: 1.0DEG
Test System: EVERFINE GO-SPEX500_V1 SYSTEM V2.00.461
Humidity: 65.0%
Test Distance: 124.409" [K=1.0000]
Remarks: LAMP: BXRH-30G10T0-G-83 Ra: 90
LENS: PM-1084A 24R
NO DRIVER: 500mA
30minutes warm-up

LUMINOUS INTENSITY DISTRIBUTION DIAGRAM

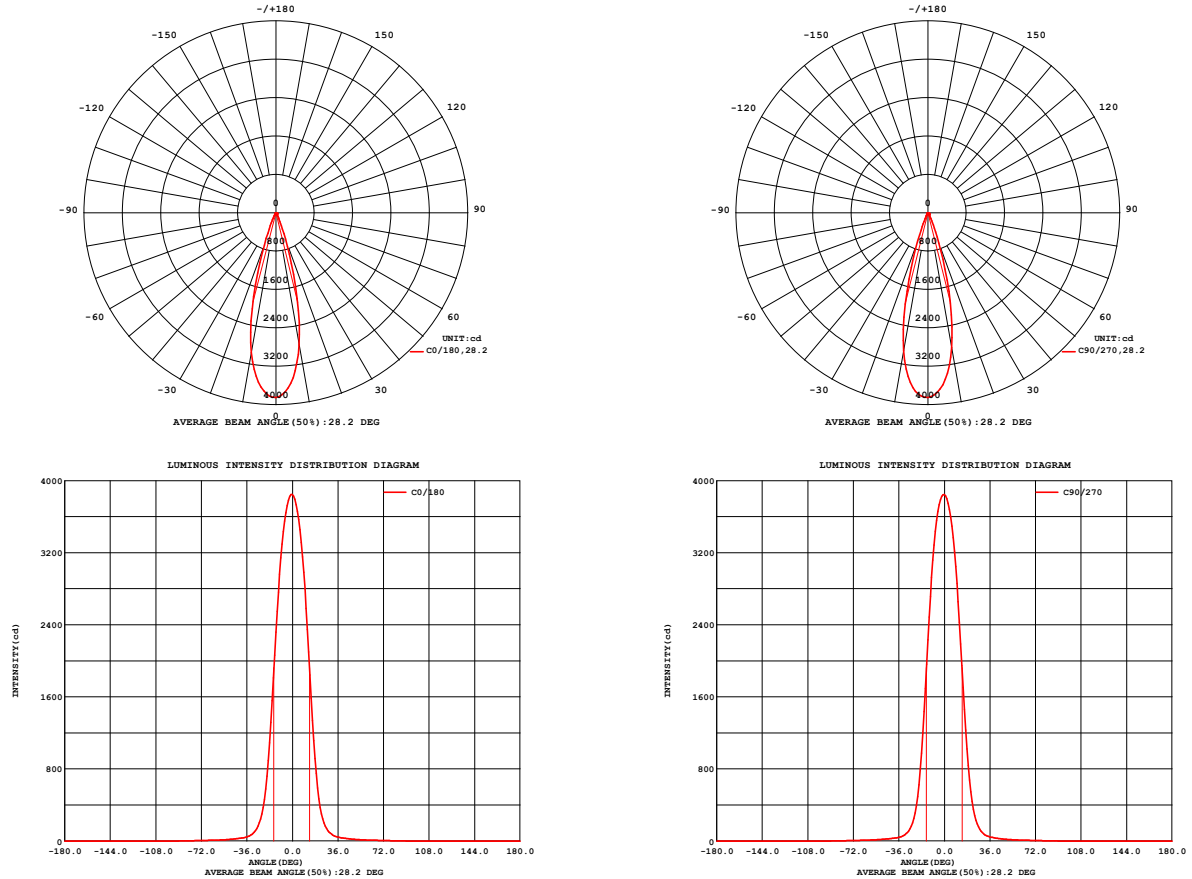


Fig. C0/C180

Fig. C90/C270

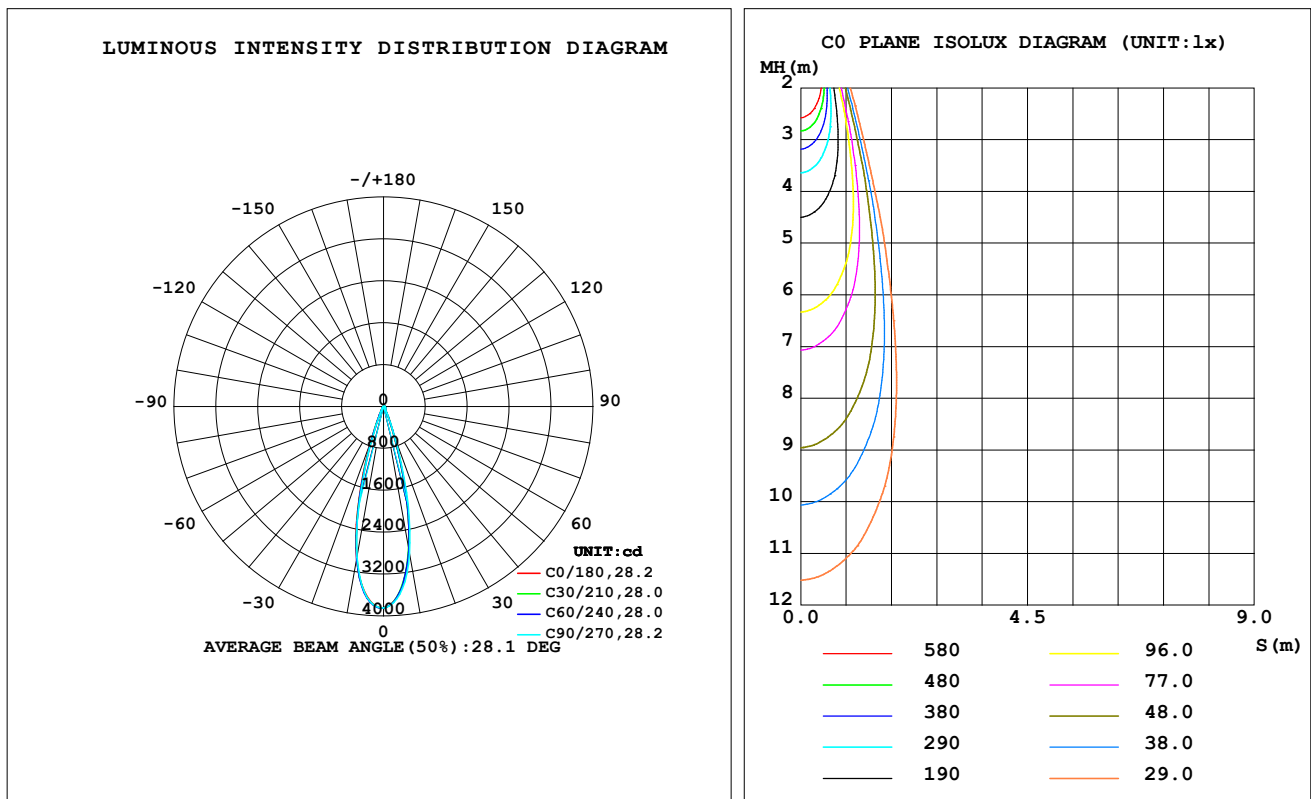
C Range: 0 - 360DEG
C Interval: For a lens beam angle of 24°
Test Speed: HIGH
Temperature: 77.54 °F
Operators: zoe
Test Date: 2024-8-22

γ Range: 0 - 180DEG
γ Interval: 1.0DEG
Test System: EVERFINE GO-SPEX500_V1 SYSTEM V2.00.461
Humidity: 65.0%
Test Distance: 124.409" [K=1.0000]
Remarks: LAMP: BXRH-30G10T0-G-83 Ra: 90
LENS: PM-1084A 24R
NO DRIVER: 500mA
30minutes warm-up

LUMINAIRE PHOTOMETRIC TEST REPORT

Test:U:17.654V I:0.5000A P:8.8270W PF:1.0000 Freq:49.99Hz Lamp Flux:1124.6x1 lm		
NAME: CTL-MM-1.5-30K-24-SQ-AD-OPS	TYPE:	WEIGHT:
SPEC.: 3000K	DIM.:	SERIAL No.: 2408221149
MFR.: MERCURY LIGHTING	SUR.: 0.002601m2	Shielding Angle:

DATA OF LAMP		PHOTOMETRIC DATA Eff: 109.06 lm/W			
MODEL	Brideglux	I _{max} (cd)	3849	S/MH (C0/180)	0.46
NOMINAL POWER (W)	9	LOR (%)	85.6	S/MH (C90/270)	0.44
RATED VOLTAGE (V)	18	TOTAL FLUX (lm)	962.66	☒ UP, DN (C0-180)	0.0, 42.5
NOMINAL FLUX (lm)	1124.6	CIE CLASS	DIRECT	☒ UP, DN (C180-360)	0.0, 43.1
LAMPS INSIDE	1	☒ up (%)	0.0	CIBSE SHR NOM	0.00
TEST VOLTAGE (V)	18	☒ down (%)	85.6	CIBSE SHR MAX	0.30



C Range: 0 - 360DEG

C Interval: For a lens beam angle of 24°

Test Speed: HIGH

Temperature: 77.54 °F

Operators: zoe

Test Date: 2024-8-22

γ Range: 0 - 180DEG

γ Interval: 1.0DEG

Test System: EVERFINE GO-SPEX500_V1 SYSTEM V2.00.461

Humidity: 65.0%

Test Distance: 124.409" [K=1.0000]

Remarks: LAMP: BXRH-30G10T0-G-83 Ra: 90

LENS: PM-1084A 24R

NO DRIVER: 500mA

30minutes warm-up

ZONAL FLUX DIAGRAM

ZONAL FLUX DIAGRAM:

θ	C0	C45	C90	C135	C180	C225	C270	C315	φ	zone	total	%lum,lamp
10	2798	2775	2857	2910	2961	2955	2924	2854	0- 10	321.5	321.5	33.4,28.6
20	586.4	611.1	676.2	691.0	718.8	670.6	623.9	589.4	10- 20	450.1	771.6	80.2,68.6
30	87.06	91.44	92.78	91.28	97.23	91.53	82.17	76.02	20- 30	115.6	887.2	92.2,78.9
40	32.84	33.64	34.27	33.66	33.09	31.87	31.37	31.02	30- 40	31.93	919.1	95.5,81.7
50	17.26	17.56	17.69	17.51	17.29	17.22	17.54	17.48	40- 50	18.37	937.5	97.4,83.4
60	9.824	9.915	9.879	9.732	9.383	9.559	9.934	9.929	50- 60	11.69	949.2	98.6,84.4
70	6.330	6.336	6.237	6.116	6.023	6.052	6.150	6.248	60- 70	7.736	956.9	99.4,85.1
80	2.489	2.706	2.665	2.789	2.760	2.771	2.614	2.668	70- 80	4.718	961.7	99.9,85.5
90	0	0	0	0	0	0	0	0	80- 90	0.9966	962.7	100,85.6
100	0	0	0	0	0	0	0	0	90-100	0	962.7	100,85.6
110	0	0	0	0	0	0	0	0	100-110	0	962.7	100,85.6
120	0	0	0	0	0	0	0	0	110-120	0	962.7	100,85.6
130	0	0	0	0	0	0	0	0	120-130	0	962.7	100,85.6
140	0	0	0	0	0	0	0	0	130-140	0	962.7	100,85.6
150	0	0	0	0	0	0	0	0	140-150	0	962.7	100,85.6
160	0	0	0	0	0	0	0	0	150-160	0	962.7	100,85.6
170	0	0	0	0	0	0	0	0	160-170	0	962.7	100,85.6
180	0	0	0	0	0	0	0	0	170-180	0	962.7	100,85.6
DEG	LUMINOUS INTENSITY:cd									UNIT:lm		

C Range: 0 - 360DEG

C Interval:For a lens beam angle of 24°

Test Speed: HIGH

Temperature:77.54 °F

Operators:zoe

Test Date:2024-8-22

γ Range: 0 - 180DEG

γ Interval: 1.0DEG

Test System:EVERFINE GO-SPEX500_V1 SYSTEM V2.00.461

Humidity:65.0%

Test Distance:124.409" [K=1.0000]

Remarks: LAMP:BXRH-30G10T0-G-83 Ra:90

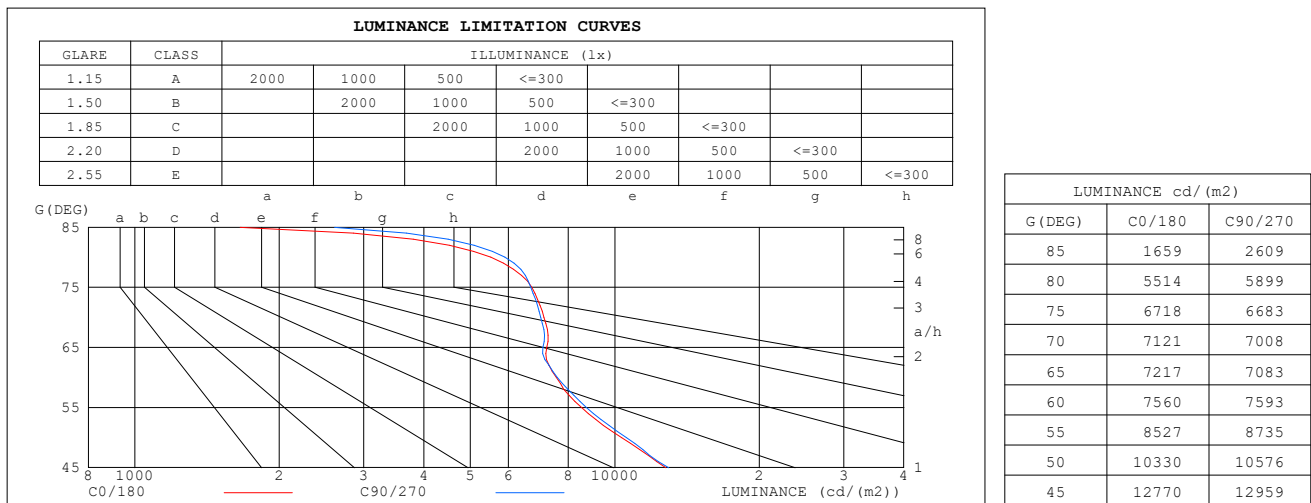
LENS:PM-1084A 24R

NO DRIVER:500mA

30minutes warm-up

LUMINANCE LIMITATION CURVES

Test: U:17.654V I:0.5000A P:8.8270W PF:1.0000 Freq:49.99Hz Lamp Flux: 1124.6x1 lm		
NAME: CTL-MM-1.5-30K-24-SQ-AD-OPS	TYPE:	WEIGHT:
SPEC.: 3000K	DIM.:	SERIAL No.: 2408221149
MFR.: MERCURY LIGHTING	SUR.: 0.002601m2	Shielding Angle:



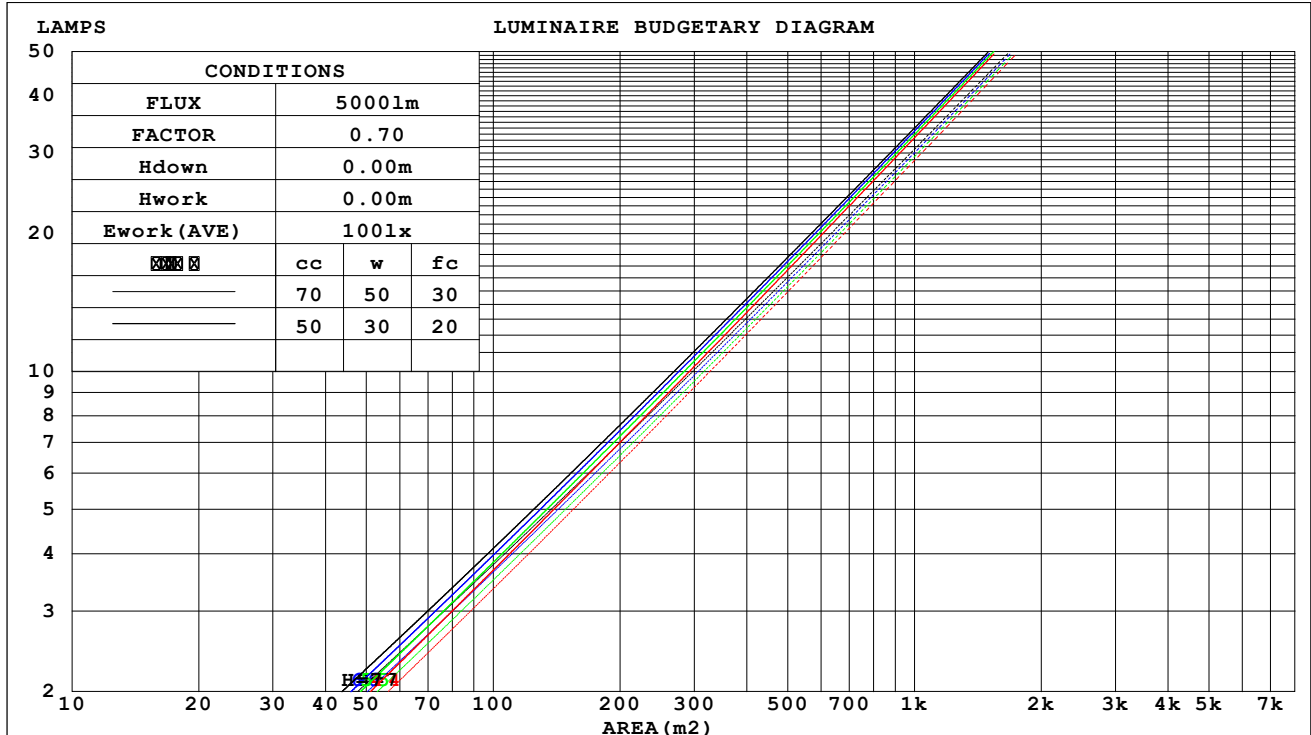
C Range: 0 - 360DEG
C Interval: For a lens beam angle of 24°
Test Speed: HIGH
Temperature: 77.54 °F
Operators: zoe
Test Date: 2024-8-22

γ Range: 0 - 180DEG
γ Interval: 1.0DEG
Test System: EVERFINE GO-SPEX500_V1 SYSTEM V2.00.461
Humidity: 65.0%
Test Distance: 124.409" [K=1.0000]
Remarks: LAMP: BXRH-30G10T0-G-83 Ra:90
 LENS: PM-1084A 24R
 NO DRIVER: 500mA
 30minutes warm-up

CU AND LUMINAIRE BUDGETARY ESTIMATE DIAGRAM

Test:U:17.654V I:0.5000A P:8.8270W PF:1.0000 Freq:49.99Hz Lamp Flux:1124.6x1 lm		
NAME: CTL-MM-1.5-30K-24-SQ-AD-OPS	TYPE:	WEIGHT:
SPEC.: 3000K	DIM.:	SERIAL No.: 2408221149
MFR.: MERCURY LIGHTING	SUR.: 0.002601m2	Shielding Angle:

cc	80%			70%			50%			30%			10%			0														
w	50%	30%	10%	50%	30%	10%	50%	30%	10%	50%	30%	10%	50%	30%	10%	0														
fc	20%			20%			20%			20%			20%			0														
RCR	RCR:Room Cavity Ratio															Coefficients of Utilization(CU)														
0.0	1.02	1.02	1.02	.00	.00	.00	.95	.95	.95	.91	.91	.91	.87	.87	.87	.86														
1.0	.96	.95	.93	.94	.93	.92	.91	.90	.89	.88	.87	.86	.85	.84	.84	.82														
2.0	.91	.89	.86	.90	.88	.86	.87	.85	.84	.85	.83	.82	.83	.81	.80	.79														
3.0	.87	.84	.81	.86	.83	.81	.84	.82	.80	.82	.80	.78	.80	.79	.77	.76														
4.0	.84	.80	.77	.83	.80	.77	.81	.78	.76	.80	.77	.75	.78	.76	.74	.73														
5.0	.81	.77	.74	.80	.76	.74	.78	.75	.73	.77	.75	.73	.76	.74	.72	.71														
6.0	.78	.74	.71	.77	.74	.71	.76	.73	.71	.75	.72	.70	.74	.72	.70	.69														
7.0	.75	.71	.69	.75	.71	.69	.74	.71	.68	.73	.70	.68	.72	.69	.68	.67														
8.0	.73	.69	.67	.72	.69	.66	.71	.68	.66	.71	.68	.66	.70	.68	.66	.65														
9.0	.71	.67	.65	.70	.67	.64	.70	.66	.64	.69	.66	.64	.68	.66	.64	.63														
10.0	.69	.65	.63	.68	.65	.63	.68	.65	.62	.67	.64	.62	.67	.64	.62	.61														



C Range: 0 - 360DEG

C Interval: For a lens beam angle of 24°

Test Speed: HIGH

Temperature: 77.54 °F

Operators: zoe

Test Date: 2024-8-22

γ Range: 0 - 180DEG

γ Interval: 1.0DEG

Test System: EVERFINE GO-SPEX500_V1 SYSTEM V2.00.461

Humidity: 65.0%

Test Distance: 124.409" [K=1.0000]

Remarks: LAMP: BXRH-30G10T0-G-83 Ra: 90

LENS: PM-1084A 24R

NO DRIVER: 500mA

30minutes warm-up

WEC AND CCEC

Test:U:17.654V I:0.5000A P:8.8270W PF:1.0000 Freq:49.99Hz Lamp Flux:1124.6x1 lm		
NAME: CTL-MM-1.5-30K-24-SQ-AD-OPS	TYPE:	WEIGHT:
SPEC.: 3000K	DIM.:	SERIAL No.: 2408221149
MFR.: MERCURY LIGHTING	SUR.: 0.002601m2	Shielding Angle:

cc	80%			70%			50%			30%			10%			0
w	50%	30%	10%	50%	30%	10%	50%	30%	10%	50%	30%	10%	50%	30%	10%	0
fc	20%			20%			20%			20%			20%			0
RCR	RCR:Room Cavity Ratio						Wall Exitance Coefficients(WEC)									
0.0																
1.0	.124	.071	.022	.118	.068	.021	.108	.062	.020	.098	.056	.018	.089	.052	.017	
2.0	.115	.063	.019	.110	.061	.019	.101	.056	.018	.093	.052	.016	.086	.049	.015	
3.0	.107	.057	.017	.103	.055	.017	.096	.052	.016	.089	.049	.015	.082	.046	.014	
4.0	.100	.052	.015	.097	.051	.015	.090	.048	.014	.085	.045	.014	.079	.043	.013	
5.0	.094	.048	.014	.091	.047	.014	.086	.045	.013	.081	.043	.013	.076	.041	.012	
6.0	.088	.044	.013	.086	.043	.013	.081	.042	.012	.077	.040	.012	.073	.039	.011	
7.0	.084	.041	.012	.082	.041	.012	.078	.039	.011	.074	.038	.011	.070	.037	.011	
8.0	.080	.039	.011	.078	.038	.011	.074	.037	.011	.071	.036	.010	.068	.035	.010	
9.0	.076	.037	.010	.074	.036	.010	.071	.035	.010	.068	.034	.010	.066	.033	.010	
10.0	.073	.035	.010	.071	.034	.010	.068	.034	.009	.066	.033	.009	.063	.032	.009	

cc	80%			70%			50%			30%			10%			0
w	50%	30%	10%	50%	30%	10%	50%	30%	10%	50%	30%	10%	50%	30%	10%	0
fc	20%			20%			20%			20%			20%			0
RCR	RCR:Room Cavity Ratio						Ceiling Cavity Exitance Coefficients (CCEC)									
0.0	.163	.163	.163	.139	.139	.139	.095	.095	.095	.055	.055	.055	.017	.017	.017	
1.0	.145	.135	.126	.124	.116	.109	.085	.080	.075	.049	.046	.044	.016	.015	.014	
2.0	.129	.114	.100	.111	.098	.087	.076	.068	.060	.044	.039	.035	.014	.013	.012	
3.0	.117	.097	.081	.100	.084	.070	.069	.058	.049	.040	.034	.029	.013	.011	.010	
4.0	.106	.084	.067	.091	.073	.058	.063	.051	.041	.036	.030	.024	.012	.010	.008	
5.0	.097	.073	.056	.084	.064	.049	.058	.044	.034	.033	.026	.020	.011	.009	.007	
6.0	.090	.065	.047	.077	.056	.041	.053	.039	.029	.031	.023	.017	.010	.008	.006	
7.0	.083	.058	.040	.072	.050	.035	.050	.035	.025	.029	.021	.015	.009	.007	.005	
8.0	.078	.052	.035	.067	.045	.030	.046	.032	.021	.027	.019	.013	.009	.006	.004	
9.0	.073	.047	.030	.063	.041	.026	.043	.029	.019	.025	.017	.011	.008	.006	.004	
10.0	.069	.043	.026	.059	.038	.023	.041	.026	.016	.024	.016	.010	.008	.005	.003	

C Range: 0 - 360DEG

C Interval:For a lens beam angle of 24°

Test Speed: HIGH

Temperature:77.54 °F

Operators:zoe

Test Date:2024-8-22

γ Range: 0 - 180DEG

γ Interval: 1.0DEG

Test System:EVERFINE GO-SPEX500_V1 SYSTEM V2.00.461

Humidity:65.0%

Test Distance:124.409" [K=1.0000]

Remarks: LAMP:BXRH-30G10T0-G-83 Ra:90

LENS:PM-1084A 24R

NO DRIVER:500mA

30minutes warm-up

UGR(Unified Glare Rating) Table

Test:U:17.654V I:0.5000A P:8.8270W PF:1.0000 Freq:49.99Hz Lamp Flux:1124.6x1 lm											
NAME: CTL-MM-1.5-30K-24-SQ-AD-OPS					TYPE:			WEIGHT:			
SPEC.: 3000K					DIM.:			SERIAL No.: 2408221149			
MFR.: MERCURY LIGHTING					SUR.: 0.002601m2			Shielding Angle:			
ceiling/cavity	0.7	0.7	0.5	0.5	0.3	0.7	0.7	0.5	0.5	0.3	
walls	0.5	0.3	0.5	0.3	0.3	0.5	0.3	0.5	0.3	0.3	
working plane	0.2	0.2	0.2	0.2	0.2	0.2	0.2	0.2	0.2	0.2	
Room dimensions		Viewed crosswise					Viewed endwise				
x = 2H y = 2H	2H	12.2	12.9	12.4	13.0	13.2	12.3	12.9	12.5	13.1	13.2
	3H	13.2	13.8	13.4	14.0	14.2	13.2	13.9	13.5	14.1	14.2
	4H	13.7	14.3	13.9	14.5	14.7	13.7	14.3	14.0	14.5	14.7
	6H	14.0	14.6	14.3	14.8	15.0	14.1	14.6	14.3	14.9	15.1
	8H	14.1	14.6	14.4	14.9	15.1	14.1	14.7	14.4	14.9	15.2
	12H	14.1	14.6	14.4	14.9	15.1	14.1	14.7	14.4	14.9	15.2
4H	2H	12.5	13.2	12.8	13.4	13.6	12.6	13.2	12.9	13.4	13.6
	3H	13.8	14.3	14.1	14.6	14.9	13.8	14.4	14.1	14.6	14.9
	4H	14.4	14.9	14.7	15.2	15.5	14.4	14.9	14.7	15.2	15.5
	6H	14.8	15.3	15.2	15.6	15.9	14.9	15.3	15.2	15.6	16.0
	8H	14.9	15.3	15.3	15.7	16.1	15.0	15.4	15.4	15.8	16.1
	12H	14.9	15.3	15.3	15.7	16.1	15.0	15.4	15.4	15.8	16.1
8H	4H	14.6	15.0	15.0	15.4	15.7	14.6	15.0	15.0	15.4	15.7
	6H	15.2	15.5	15.6	15.9	16.3	15.2	15.5	15.6	15.9	16.3
	8H	15.3	15.6	15.8	16.0	16.5	15.4	15.7	15.8	16.1	16.5
	12H	15.3	15.6	15.8	16.0	16.5	15.4	15.7	15.9	16.1	16.6
12H	4H	14.6	15.0	15.0	15.3	15.7	14.6	15.0	15.0	15.3	15.7
	6H	15.2	15.5	15.6	15.9	16.3	15.2	15.5	15.7	15.9	16.4
	8H	15.3	15.6	15.8	16.0	16.5	15.4	15.7	15.9	16.1	16.6
Variations with the observer position at spacings(CIE Pub.117):											
S = 1.0H	+ 0.4 / - 0.5					+ 0.4 / - 0.5					
1.5H	+ 0.5 / - 0.4					+ 0.5 / - 0.4					
2.0H	+ 0.8 / - 0.6					+ 0.8 / - 0.6					

CIE Pub.117, 1125 lm Total Lamp Luminous Flux Correct (8log(F/F0) = 0.4)
 Area: 0.002601 m2

C Range: 0 - 360DEG C Interval: For a lens beam angle of 24° Test Speed: HIGH Temperature: 77.54 °F Operators: zoe Test Date: 2024-8-22	γ Range: 0 - 180DEG γ Interval: 1.0DEG Test System: EVERFINE GO-SPEX500_V1 SYSTEM V2.00.461 Humidity: 65.0% Test Distance: 124.409" [K=1.0000] Remarks: LAMP: BXRH-30G10T0-G-83 Ra: 90 LENS: PM-1084A 24R NO DRIVER: 500mA 30minutes warm-up
--	--

UTILIZATION FACTORS TABLE

Test:U:17.654V I:0.5000A P:8.8270W PF:1.0000 Freq:49.99Hz Lamp Flux:1124.6x1 lm		
NAME: CTL-MM-1.5-30K-24-SQ-AD-OPS	TYPE:	WEIGHT:
SPEC.: 3000K	DIM.:	SERIAL No.: 2408221149
MFR.: MERCURY LIGHTING	SUR.: 0.002601m2	Shielding Angle:

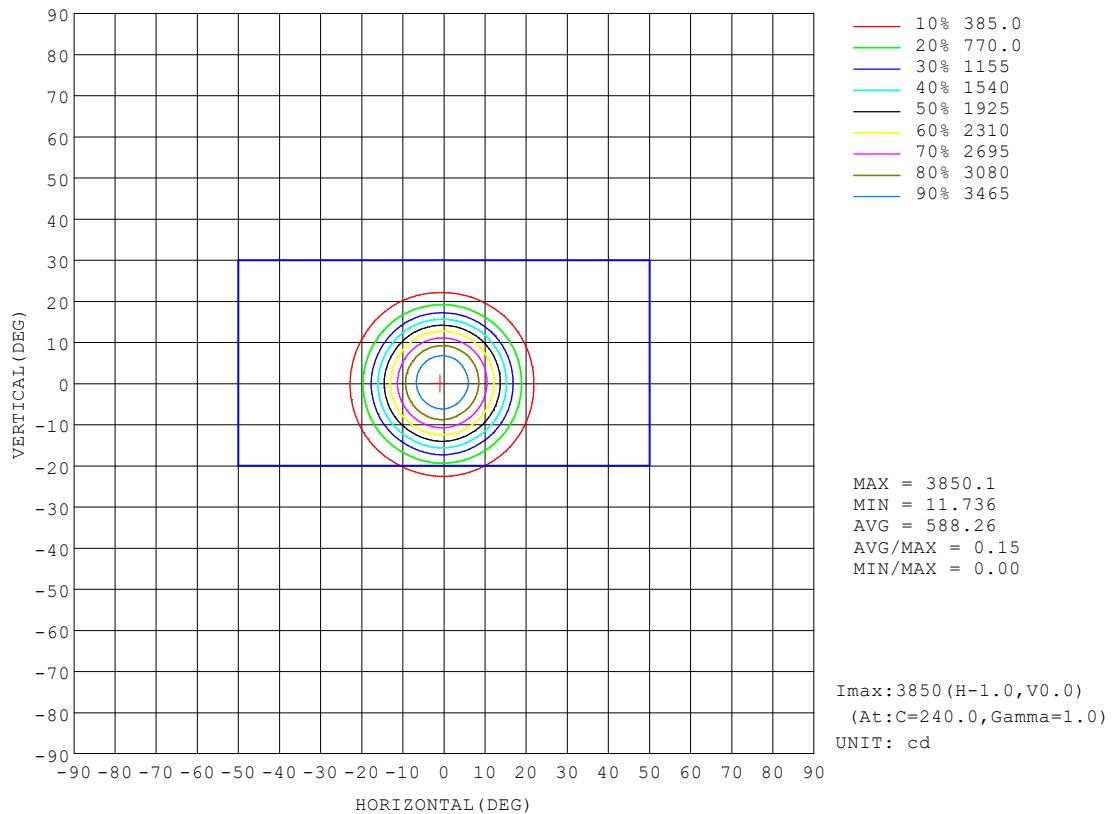
REFLECTANCE										
Ceiling	0.8	0.8	0.8	0.7	0.7	0.7	0.5	0.5	0.5	0
Walls	0.7	0.5	0.3	0.7	0.5	0.3	0.7	0.5	0.3	0
Working plane	0.2	0.2	0.2	0.2	0.2	0.2	0.2	0.2	0.2	0
ROOM INDEX	UTILIZATION FACTORS (PERCENT) $k(RI) \times RCR = 5$									
$k = 0.60$	76	71	68	76	71	68	75	70	67	65
0.80	82	77	74	82	77	74	81	77	74	71
1.00	86	81	78	85	81	78	84	80	77	74
1.25	89	85	82	88	84	81	86	83	81	77
1.50	91	87	84	90	87	84	88	85	83	79
2.00	93	90	87	92	89	86	90	87	85	81
2.50	95	91	89	93	90	88	91	88	87	82
3.00	96	93	91	94	92	90	91	90	88	83
4.00	98	95	93	96	94	92	93	91	90	84
5.00	99	97	95	97	95	94	93	92	91	85
ROOM INDEX	UF(total)									Direct
According to DIN EN 13032-2 2004			Suspended					SHRNOM = 1.25		

C Range: 0 - 360DEG
 C Interval: For a lens beam angle of 24°
 Test Speed: HIGH
 Temperature: 77.54 °F
 Operators: zoe
 Test Date: 2024-8-22

γ Range: 0 - 180DEG
 γ Interval: 1.0DEG
 Test System: EVERFINE GO-SPEX500_V1 SYSTEM V2.00.461
 Humidity: 65.0%
 Test Distance: 124.409" [K=1.0000]
 Remarks: LAMP: BXRH-30G10T0-G-83 Ra:90
 LENS: PM-1084A 24R
 NO DRIVER: 500mA
 30minutes warm-up

ISOCANDELA DIAGRAM

Test:U:17.654V I:0.5000A P:8.8270W PF:1.0000 Freq:49.99Hz Lamp Flux:1124.6x1 lm		
NAME: CTL-MM-1.5-30K-24-SQ-AD-OPS	TYPE:	WEIGHT:
SPEC.: 3000K	DIM.:	SERIAL No.: 2408221149
MFR.: MERCURY LIGHTING	SUR.: 0.002601m2	Shielding Angle:

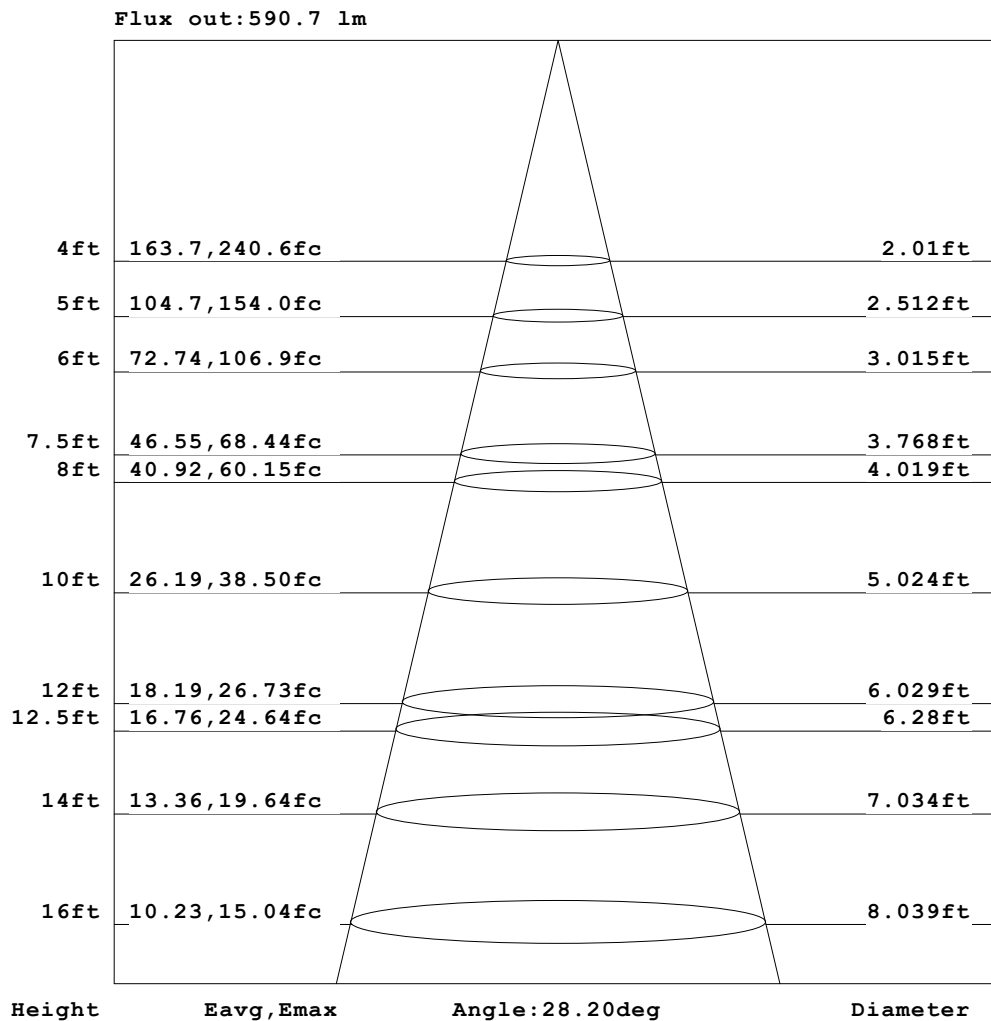


C Range: 0 - 360DEG
 C Interval: For a lens beam angle of 24°
 Test Speed: HIGH
 Temperature: 77.54 °F
 Operators: zoe
 Test Date: 2024-8-22

γ Range: 0 - 180DEG
 γ Interval: 1.0DEG
 Test System: EVERFINE GO-SPEX500_V1 SYSTEM V2.00.461
 Humidity: 65.0%
 Test Distance: 124.409" [K=1.0000]
 Remarks: LAMP: BXRH-30G10T0-G-83 Ra: 90
 LENS: PM-1084A 24R
 NO DRIVER: 500mA
 30minutes warm-up

AAI Figure

Test:U:17.654V I:0.5000A P:8.8270W PF:1.0000 Freq:49.99Hz Lamp Flux:1124.6x1 lm		
NAME: CTL-MM-1.5-30K-24-SQ-AD-OPS	TYPE:	WEIGHT:
SPEC.: 3000K	DIM.:	SERIAL No.: 2408221149
MFR.: MERCURY LIGHTING	SUR.: 0.002601m2	Shielding Angle:



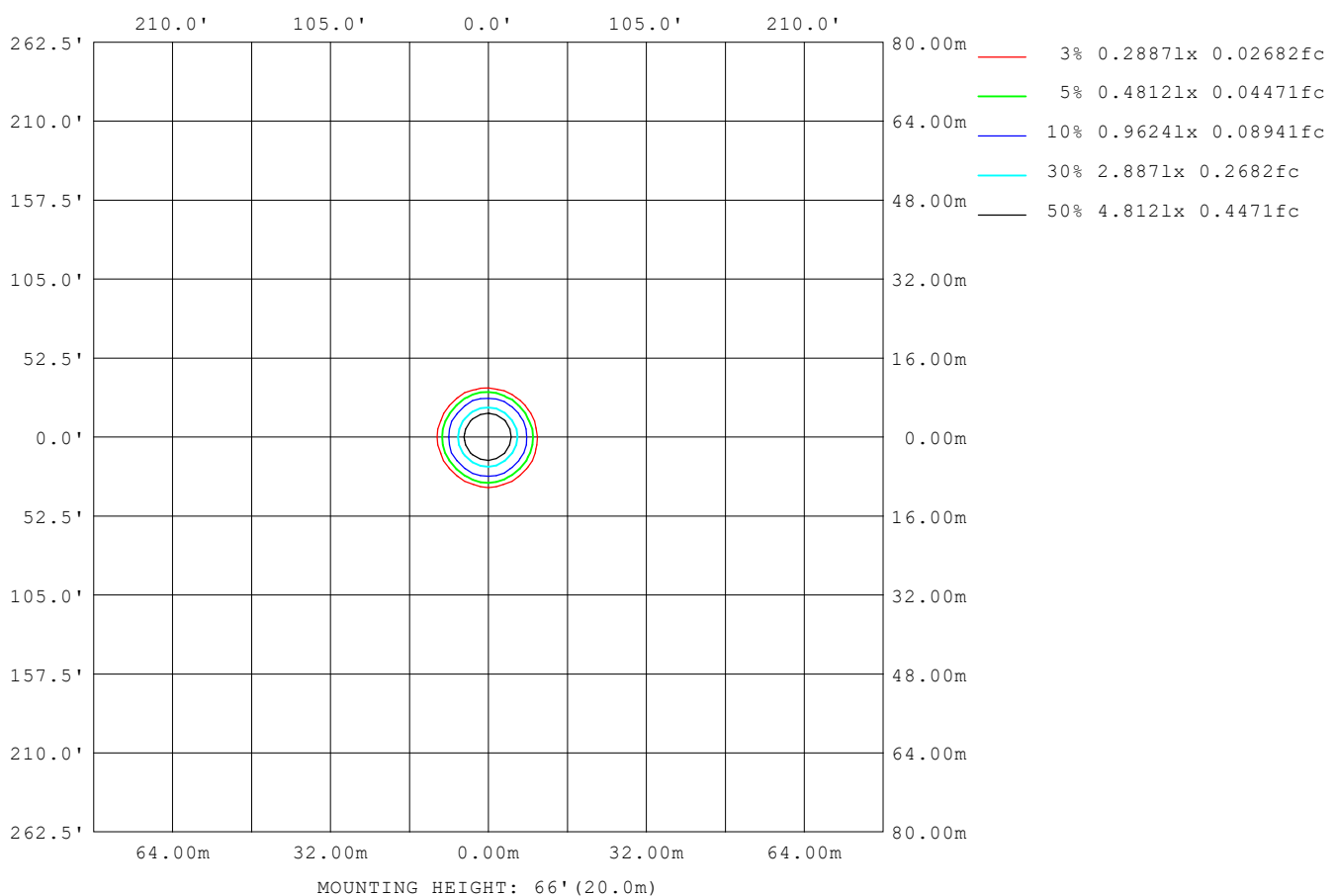
Note: The Curves indicate the illuminated area and the average illumination when the luminaire is at different distance.

C Range: 0 - 360DEG
 C Interval: For a lens beam angle of 24°
 Test Speed: HIGH
 Temperature: 77.54°F
 Operators: zoe
 Test Date: 2024-8-22

γ Range: 0 - 180DEG
 γ Interval: 1.0DEG
 Test System: EVERFINE GO-SPEX500_V1 SYSTEM V2.00.461
 Humidity: 65.0%
 Test Distance: 124.409" [K=1.0000]
 Remarks: LAMP: BXRH-30G10T0-G-83 Ra:90
 LENS: PM-1084A 24R
 NO DRIVER: 500mA
 30minutes warm-up

ISOLUX DIAGRAM

Test: U:17.654V I:0.5000A P:8.8270W PF:1.0000 Freq:49.99Hz Lamp Flux: 1124.6x1 lm		
NAME: CTL-MM-1.5-30K-24-SQ-AD-OPS	TYPE:	WEIGHT:
SPEC.: 3000K	DIM.:	SERIAL No.: 2408221149
MFR.: MERCURY LIGHTING	SUR.: 0.002601m2	Shielding Angle:



C Range: 0 - 360DEG
C Interval: For a lens beam angle of 24°
Test Speed: HIGH
Temperature: 77.54 °F
Operators: zoe
Test Date: 2024-8-22

γ Range: 0 - 180DEG
γ Interval: 1.0DEG
Test System: EVERFINE GO-SPEX500_V1 SYSTEM V2.00.461
Humidity: 65.0%
Test Distance: 124.409" [K=1.0000]
Remarks: LAMP: BXRH-30G10T0-G-83 Ra:90
 LENS: PM-1084A 24R
 NO DRIVER: 500mA
 30minutes warm-up

LED Avg.L Report

Test:U:17.654V I:0.5000A P:8.8270W PF:1.0000 Freq:49.99Hz Lamp Flux:1124.6x1 lm		
NAME: CTL-MM-1.5-30K-24-SQ-AD-OPS	TYPE:	WEIGHT:
SPEC.: 3000K	DIM.:	SERIAL No.: 2408221149
MFR.: MERCURY LIGHTING	SUR.: 0.002601m2	Shielding Angle:

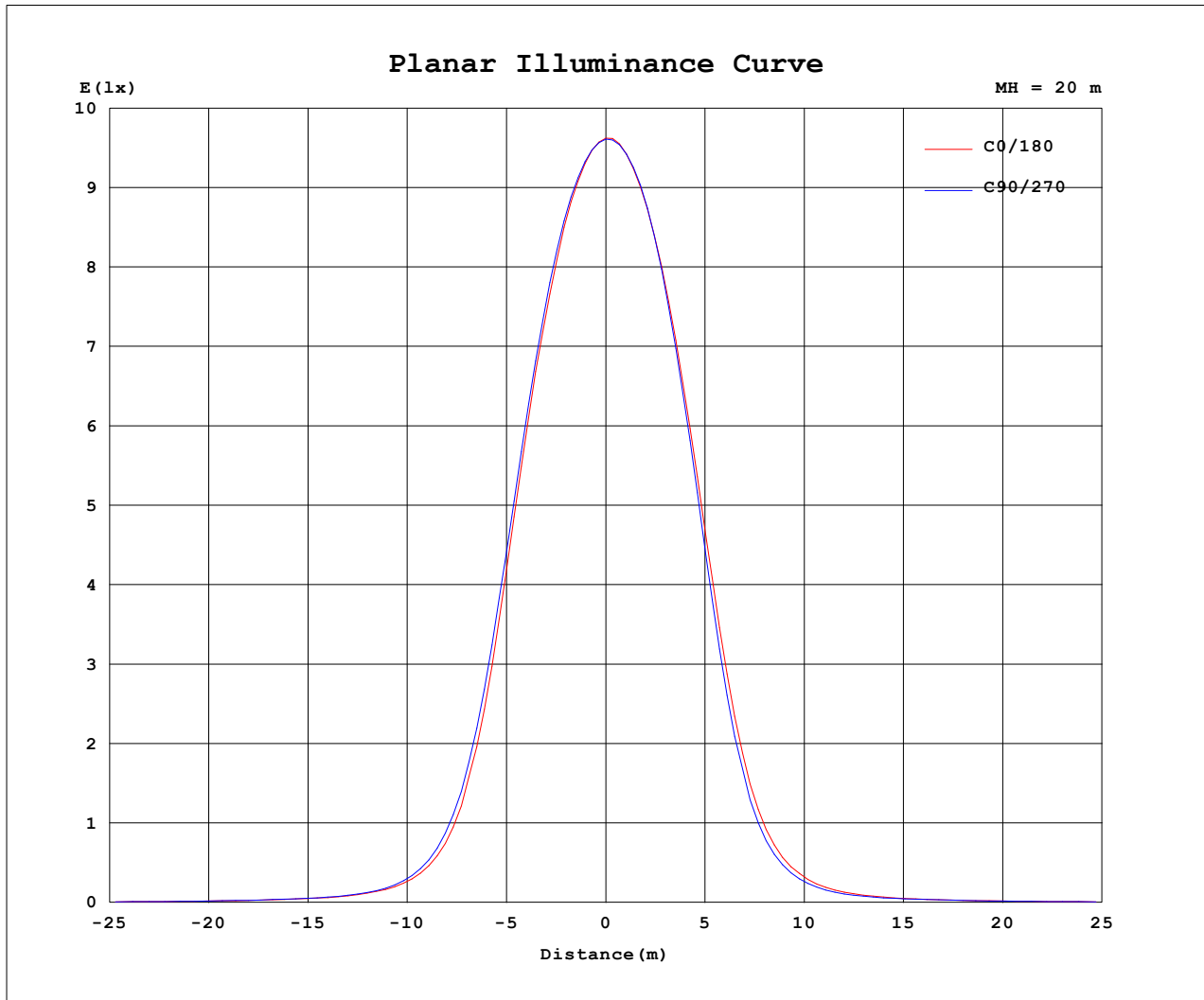
AvgL	cd/m2
L_0~180 (65) av	6987
L_0~180 (75) av	6658
L_0~180 (85) av	2430
L_90~270 (65) av	7039
L_90~270 (75) av	6661
L_90~270 (85) av	2427
L_45 (65) av	7029
L_45 (75) av	6658
L_45 (85) av	3076

Standard: GB/T 29293-2012

C Range: 0 - 360DEG
 C Interval: For a lens beam angle of 24°
 Test Speed: HIGH
 Temperature: 77.54 °F
 Operators: zoe
 Test Date: 2024-8-22

γ Range: 0 - 180DEG
 γ Interval: 1.0DEG
 Test System: EVERFINE GO-SPEX500_V1 SYSTEM V2.00.461
 Humidity: 65.0%
 Test Distance: 124.409" [K=1.0000]
 Remarks: LAMP: BXRH-30G10T0-G-83 Ra: 90
 LENS: PM-1084A 24R
 NO DRIVER: 500mA
 30minutes warm-up

Planar Illuminance Curve



C Range: 0 - 360DEG
C Interval: For a lens beam angle of 24°
Test Speed: HIGH
Temperature: 77.54 °F
Operators: zoe
Test Date: 2024-8-22

γ Range: 0 - 180DEG
γ Interval: 1.0DEG
Test System: EVERFINE GO-SPEX500_V1 SYSTEM V2.00.461
Humidity: 65.0%
Test Distance: 124.409" [K=1.0000]
Remarks: LAMP: BXRH-30G10T0-G-83 Ra: 90
LENS: PM-1084A 24R
NO DRIVER: 500mA
30minutes warm-up

LUMINOUS DISTRIBUTION INTENSITY DATA

Test:U:17.654V I:0.5000A P:8.8270W PF:1.0000 Freq:49.99Hz Lamp Flux:1124.6x1 lm		
NAME: CTL-MM-1.5-30K-24-SQ-AD-OPS	TYPE:	WEIGHT:
SPEC.: 3000K	DIM.:	SERIAL No.: 2408221149
MFR.: MERCURY LIGHTING	SUR.: 0.002601m2	Shielding Angle:

Table--1

UNIT: cd

C (DEG) (DEG)	0	30	60	90	120	150	180	210	240	270	300	330						
0	3847	3847	3847	3847	3847	3847	3847	3847	3847	3847	3847	3847						
5	3568	3551	3563	3596	3610	3624	3642	3658	3666	3656	3624	3579						
10	2798	2764	2786	2857	2888	2932	2961	2951	2959	2924	2875	2833						
15	1586	1589	1603	1703	1718	1779	1811	1760	1755	1693	1647	1609						
20	586	602	620	676	672	710	719	675	666	624	593	586						
25	200	217	218	230	225	238	242	230	227	202	194	188						
30	87.1	90.7	92.1	92.8	89.9	92.7	97.2	93.4	89.7	82.2	74.1	78.0						
35	47.0	48.8	49.7	50.3	48.5	49.8	50.4	47.6	46.3	44.0	42.7	44.1						
40	32.8	33.6	33.7	34.3	33.6	33.7	33.1	32.0	31.7	31.4	30.8	31.3						
45	23.5	23.6	23.5	23.8	23.7	23.6	23.2	22.5	22.6	22.8	22.6	22.7						
50	17.3	17.5	17.7	17.7	17.6	17.4	17.3	17.1	17.3	17.5	17.6	17.4						
55	12.7	12.9	13.1	13.0	13.0	12.7	12.4	12.6	12.9	13.0	13.0	12.9						
60	9.82	9.90	9.93	9.88	9.84	9.62	9.38	9.46	9.66	9.93	9.95	9.91						
65	7.93	7.95	7.88	7.79	7.68	7.56	7.43	7.45	7.55	7.69	7.84	7.89						
70	6.33	6.37	6.31	6.24	6.15	6.08	6.02	6.02	6.08	6.15	6.22	6.27						
75	4.52	4.55	4.52	4.50	4.46	4.46	4.45	4.44	4.46	4.47	4.48	4.49						
80	2.49	2.70	2.71	2.67	2.78	2.80	2.76	2.80	2.74	2.61	2.74	2.60						
85	0.38	0.57	0.60	0.59	0.81	0.85	0.73	0.82	0.74	0.51	0.58	0.49						
90	0.00	0.00	0.00	0.00	0.00	0.00	0.00	0.00	0.00	0.00	0.00	0.00						
95	0.00	0.00	0.00	0.00	0.00	0.00	0.00	0.00	0.00	0.00	0.00	0.00						
100	0.00	0.00	0.00	0.00	0.00	0.00	0.00	0.00	0.00	0.00	0.00	0.00						
105	0.00	0.00	0.00	0.00	0.00	0.00	0.00	0.00	0.00	0.00	0.00	0.00						
110	0.00	0.00	0.00	0.00	0.00	0.00	0.00	0.00	0.00	0.00	0.00	0.00						
115	0.00	0.00	0.00	0.00	0.00	0.00	0.00	0.00	0.00	0.00	0.00	0.00						
120	0.00	0.00	0.00	0.00	0.00	0.00	0.00	0.00	0.00	0.00	0.00	0.00						
125	0.00	0.00	0.00	0.00	0.00	0.00	0.00	0.00	0.00	0.00	0.00	0.00						
130	0.00	0.00	0.00	0.00	0.00	0.00	0.00	0.00	0.00	0.00	0.00	0.00						
135	0.00	0.00	0.00	0.00	0.00	0.00	0.00	0.00	0.00	0.00	0.00	0.00						
140	0.00	0.00	0.00	0.00	0.00	0.00	0.00	0.00	0.00	0.00	0.00	0.00						
145	0.00	0.00	0.00	0.00	0.00	0.00	0.00	0.00	0.00	0.00	0.00	0.00						
150	0.00	0.00	0.00	0.00	0.00	0.00	0.00	0.00	0.00	0.00	0.00	0.00						
155	0.00	0.00	0.00	0.00	0.00	0.00	0.00	0.00	0.00	0.00	0.00	0.00						
160	0.00	0.00	0.00	0.00	0.00	0.00	0.00	0.00	0.00	0.00	0.00	0.00						
165	0.00	0.00	0.00	0.00	0.00	0.00	0.00	0.00	0.00	0.00	0.00	0.00						
170	0.00	0.00	0.00	0.00	0.00	0.00	0.00	0.00	0.00	0.00	0.00	0.00						
175	0.00	0.00	0.00	0.00	0.00	0.00	0.00	0.00	0.00	0.00	0.00	0.00						
180	0.00	0.00	0.00	0.00	0.00	0.00	0.00	0.00	0.00	0.00	0.00	0.00						

C Range: 0 - 360DEG

C Interval:For a lens beam angle of 24°

Test Speed: HIGH

Temperature:77.54 °F

Operators:zoe

Test Date:2024-8-22

γ Range: 0 - 180DEG

γ Interval: 1.0DEG

Test System:EVERFINE GO-SPEX500_V1 SYSTEM V2.00.461

Humidity:65.0%

Test Distance:124.409" [K=1.0000]

Remarks: LAMP:BXRH-30G10T0-G-83 Ra:90

LENS:PM-1084A 24R

NO DRIVER:500mA

30minutes warm-up