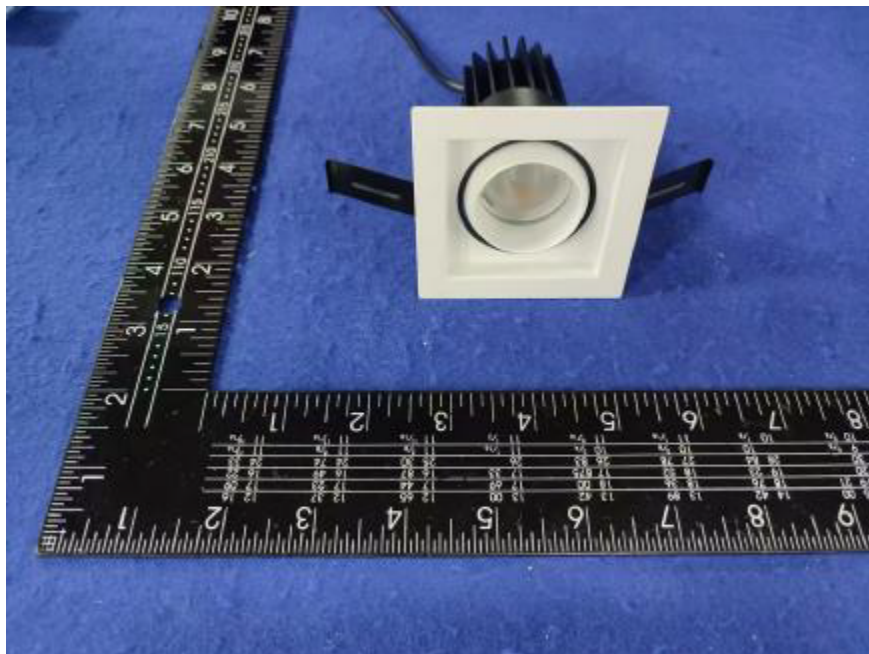


Photometric Report for each Light Engine  
used in double and triple configuration  
for Flanged and Flangeless Trim



Light Output Ratio:	84.6%	
Luminaire Power:	8.828 W	
SHR Nominal:	0.00	Calculated using the TM5
SHR Maximum:	0.30	fine grid method.

C Range: 0 - 360DEG  
C Interval: For a lens beam angle of 15°  
Test Speed: HIGH  
Temperature: 77.54 °F  
Operators: zoe  
Test Date: 2024-8-22

γ Range: 0 - 180DEG  
γ Interval: 1.0DEG  
Test System: EVERFINE GO-SPEX500\_V1 SYSTEM V2.00.461  
Humidity: 65.0%  
Test Distance: 124.409" [K=1.0000]  
Remarks: LAMP: BXRH-30G10T0-G-83 Ra:90  
LENS: PM-1084 15R  
NO DRIVER: 500mA  
30minutes warm-up

## LUMINOUS INTENSITY DISTRIBUTION DIAGRAM

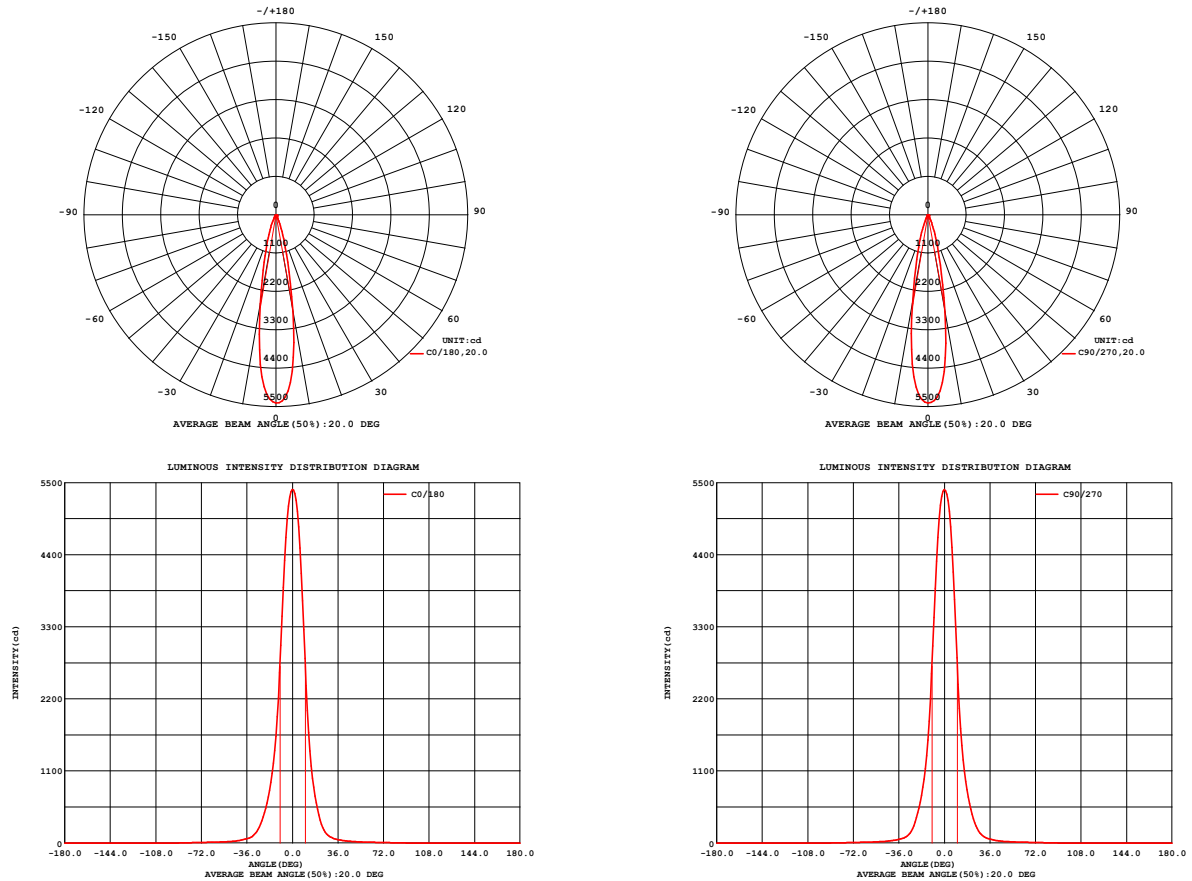


Fig. C0/C180

Fig. C90/C270

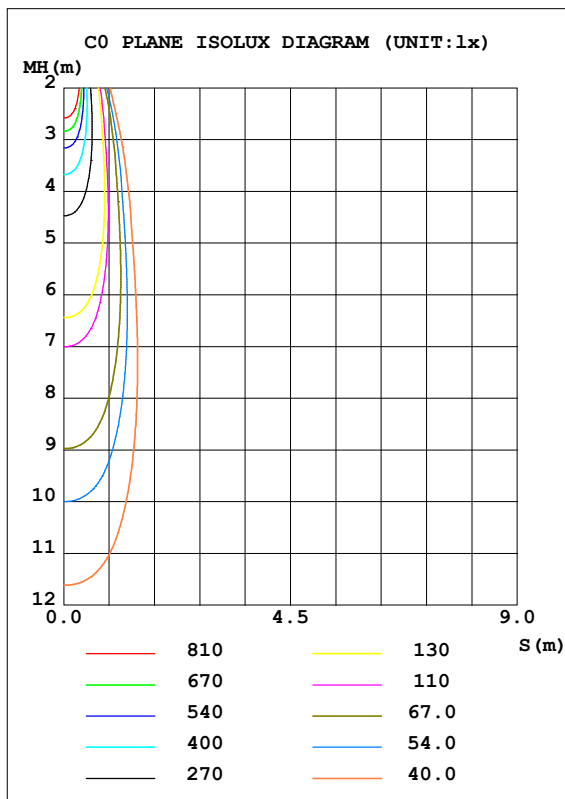
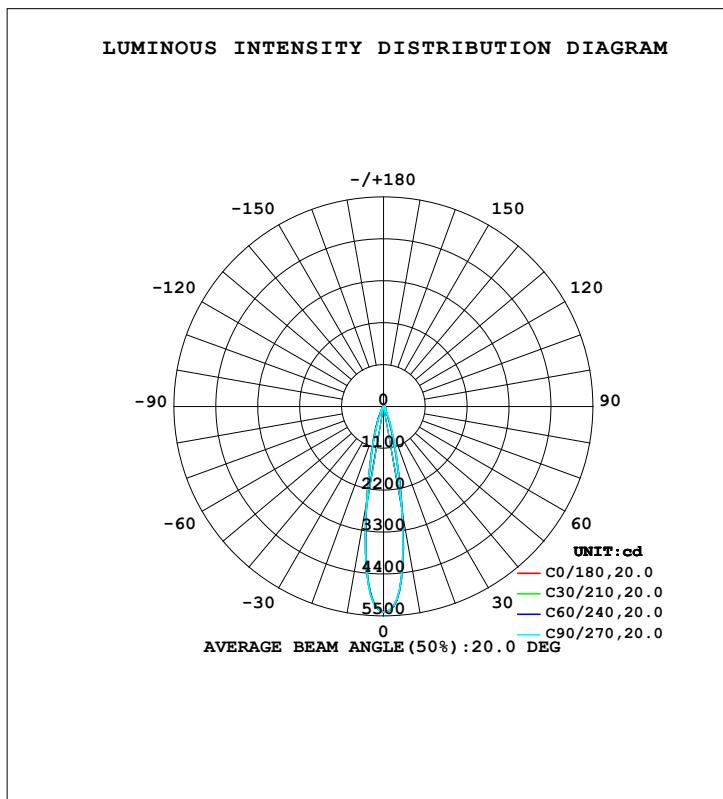
C Range: 0 - 360DEG  
 C Interval: For a lens beam angle of 15°  
 Test Speed: HIGH  
 Temperature: 77.54 °F  
 Operators: zoe  
 Test Date: 2024-8-22

γ Range: 0 - 180DEG  
 γ Interval: 1.0DEG  
 Test System: EVERFINE GO-SPEX500\_V1 SYSTEM V2.00.461  
 Humidity: 65.0%  
 Test Distance: 124.409" [K=1.0000]  
 Remarks: LAMP: BXRH-30G10T0-G-83 Ra: 90  
 LENS: PM-1084 15R  
 NO DRIVER: 500mA  
 30minutes warm-up

## LUMINAIRE PHOTOMETRIC TEST REPORT

Test:U:17.655V I:0.5000A P:8.8275W PF:1.0000 Freq:49.99Hz Lamp Flux:1124.6x1 lm		
NAME: CTL-MM-1.5-30K-15-SQ-AD-OPS	TYPE:	WEIGHT:
SPEC.: 3000K	DIM.:	SERIAL No.: 2408221148
MFR.: MERCURY LIGHTING	SUR.: 0.002601m2	Shielding Angle:

DATA OF LAMP		PHOTOMETRIC DATA Eff: 107.73 lm/W			
MODEL	Brideglux	I <sub>max</sub> (cd)	5395	S/MH (C0/180)	0.33
NOMINAL POWER (W)	9	LOR (%)	84.6	S/MH (C90/270)	0.33
RATED VOLTAGE (V)	18	TOTAL FLUX (lm)	951.00	☒ UP, DN (C0-180)	0.0, 43.2
NOMINAL FLUX (lm)	1124.6	CIE CLASS	DIRECT	☒ UP, DN (C180-360)	0.0, 41.4
LAMPS INSIDE	1	☒ up (%)	0.0	CIBSE SHR NOM	0.00
TEST VOLTAGE (V)	18	☒ down (%)	84.6	CIBSE SHR MAX	0.30



C Range: 0 - 360DEG

C Interval: For a lens beam angle of 15°

Test Speed: HIGH

Temperature: 77.54 °F

Operators: zoe

Test Date: 2024-8-22

γ Range: 0 - 180DEG

γ Interval: 1.0DEG

Test System: EVERFINE GO-SPEX500\_V1 SYSTEM V2.00.461

Humidity: 65.0%

Test Distance: 124.409" [K=1.0000]

Remarks: LAMP: BXRH-30G10T0-G-83 Ra: 90

LENS: PM-1084 15R

NO DRIVER: 500mA

30minutes warm-up

## ZONAL FLUX DIAGRAM

**ZONAL FLUX DIAGRAM:**

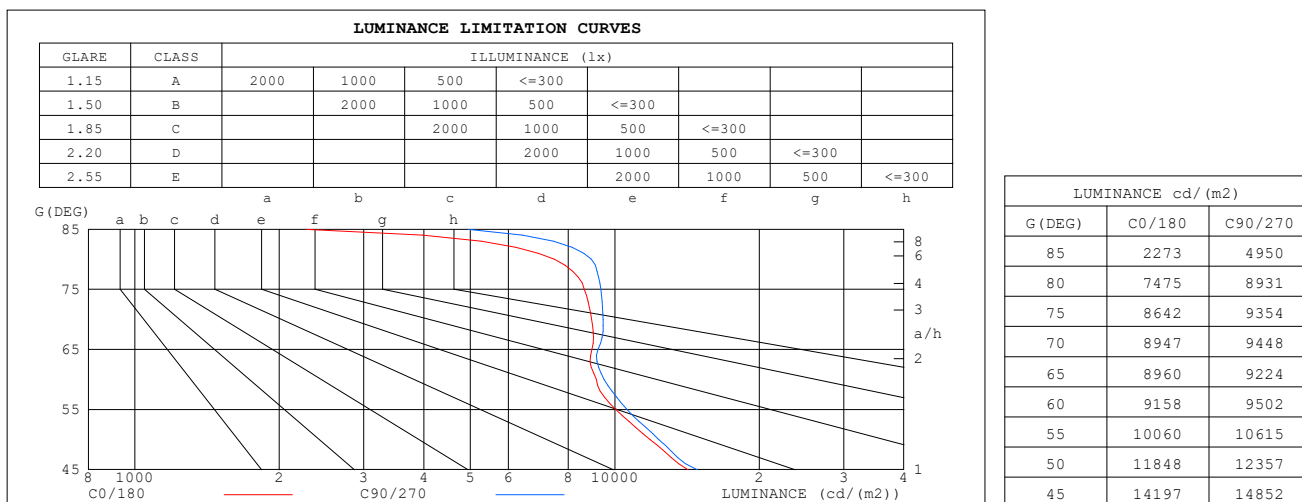
θ	C0	C45	C90	C135	C180	C225	C270	C315	φ	zone	total	%lum,lamp
10	2818	2865	2826	2699	2594	2559	2583	2709	0- 10	383.6	383.6	40.3,34.1
20	515.5	548.5	604.1	615.9	610.5	571.6	536.7	519.4	10- 20	351.8	735.5	77.3,65.4
30	92.46	101.7	114.4	122.6	128.6	114.5	96.50	88.59	20- 30	120.0	855.4	90,76.1
40	38.02	39.44	42.47	44.65	45.45	43.05	40.34	38.30	30- 40	40.80	896.2	94.2,79.7
50	19.81	20.12	20.66	21.21	21.28	21.16	20.88	20.46	40- 50	22.03	918.3	96.6,81.7
60	11.91	12.01	12.35	12.89	12.88	12.83	12.57	12.24	50- 60	14.38	932.7	98.1,82.9
70	7.961	8.103	8.403	8.786	8.957	8.743	8.369	8.066	60- 70	10.20	942.9	99.1,83.8
80	3.377	3.736	4.033	4.434	4.518	4.321	3.660	3.582	70- 80	6.635	949.5	99.8,84.4
90	0	0	0	0	0	0	0	0	80- 90	1.507	951.0	100,84.6
100	0	0	0	0	0	0	0	0	90-100	0	951.0	100,84.6
110	0	0	0	0	0	0	0	0	100-110	0	951.0	100,84.6
120	0	0	0	0	0	0	0	0	110-120	0	951.0	100,84.6
130	0	0	0	0	0	0	0	0	120-130	0	951.0	100,84.6
140	0	0	0	0	0	0	0	0	130-140	0	951.0	100,84.6
150	0	0	0	0	0	0	0	0	140-150	0	951.0	100,84.6
160	0	0	0	0	0	0	0	0	150-160	0	951.0	100,84.6
170	0	0	0	0	0	0	0	0	160-170	0	951.0	100,84.6
180	0	0	0	0	0	0	0	0	170-180	0	951.0	100,84.6
DEG	LUMINOUS INTENSITY:cd									UNIT:lm		

C Range: 0 - 360DEG  
 C Interval:For a lens beam angle of 15°  
 Test Speed: HIGH  
 Temperature:77.54°F  
 Operators:zoe  
 Test Date:2024-8-22

γ Range: 0 - 180DEG  
 γ Interval: 1.0DEG  
 Test System:EVERFINE GO-SPEX500\_V1 SYSTEM V2.00.461  
 Humidity:65.0%  
 Test Distance:124.409" [K=1.0000]  
 Remarks: LAMP:BXRH-30G10T0-G-83 Ra:90  
 LENS:PM-1084 15R  
 NO DRIVER:500mA  
 30minutes warm-up

**LUMINANCE LIMITATION CURVES**

<b>Test:</b> U:17.655V I:0.5000A P:8.8275W PF:1.0000 Freq:49.99Hz <b>Lamp Flux:</b> 1124.6x1 lm		
<b>NAME:</b> CTL-MM-1.5-30K-15-SQ-AD-OPS	<b>TYPE:</b>	<b>WEIGHT:</b>
<b>SPEC.:</b> 3000K	<b>DIM.:</b>	<b>SERIAL No.:</b> 2408221148
<b>MFR.:</b> MERCURY LIGHTING	<b>SUR.:</b> 0.002601m2	<b>Shielding Angle:</b>



C Range: 0 - 360DEG

C Interval: For a lens beam angle of 15°

Test Speed: HIGH

Temperature: 77.54 °F

Operators: zoe

Test Date: 2024-8-22

γ Range: 0 - 180DEG

γ Interval: 1.0DEG

Test System: EVERFINE GO-SPEX500\_V1 SYSTEM V2.00.461

Humidity: 65.0%

Test Distance: 124.409" [K=1.0000]

Remarks: LAMP: BXRH-30G10T0-G-83 Ra: 90

LENS: PM-1084 15R

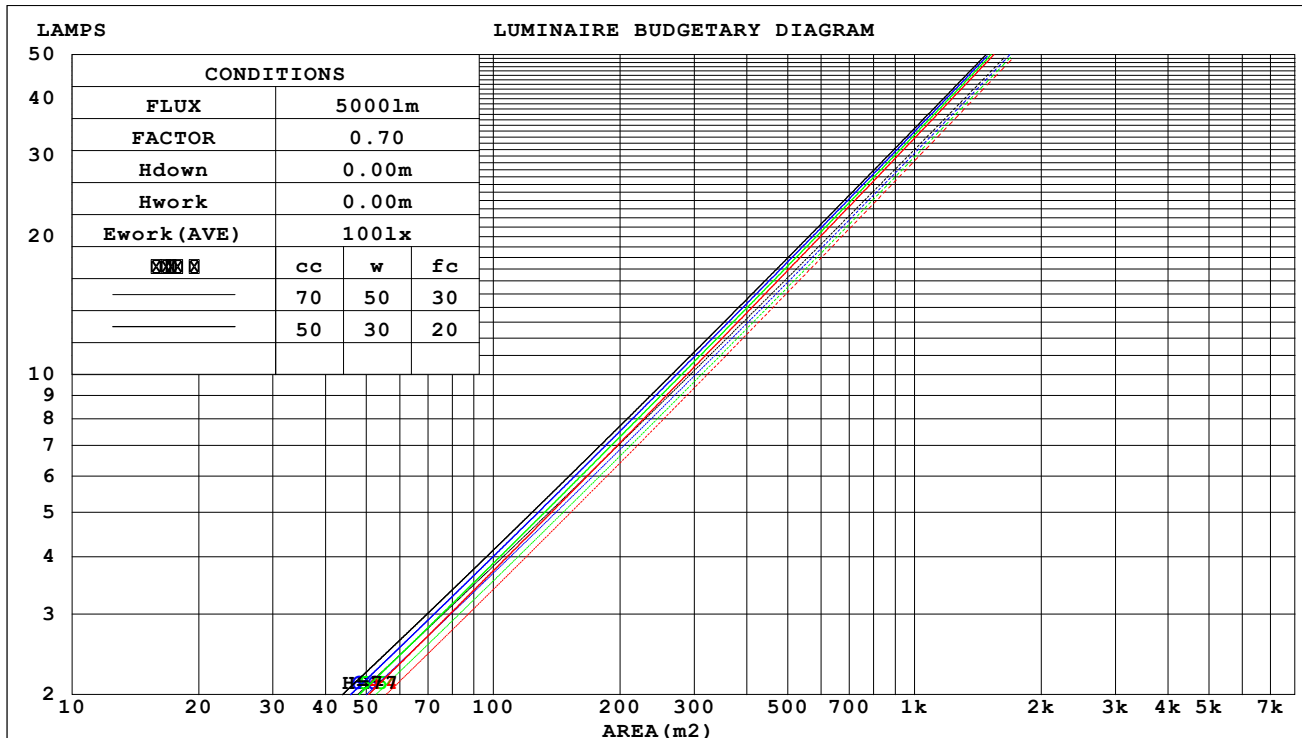
NO DRIVER: 500mA

30minutes warm-up

## CU AND LUMINAIRE BUDGETARY ESTIMATE DIAGRAM

Test:U:17.655V I:0.5000A P:8.8275W PF:1.0000 Freq:49.99Hz Lamp Flux:1124.6x1 lm		
NAME: CTL-MM-1.5-30K-15-SQ-AD-OPS	TYPE:	WEIGHT:
SPEC.: 3000K	DIM.:	SERIAL No.: 2408221148
MFR.:MERCURY LIGHTING	SUR.: 0.002601m2	Shielding Angle:

cc	80%			70%			50%			30%			10%			0
w	50%	30%	10%	50%	30%	10%	50%	30%	10%	50%	30%	10%	50%	30%	10%	0
fc	20%			20%			20%			20%			20%			0
RCR	RCR:Room Cavity Ratio															



C Range: 0 - 360DEG

C Interval:For a lens beam angle of 15°

Test Speed: HIGH

Temperature:77.54 °F

Operators:zoe

Test Date:2024-8-22

γ Range: 0 - 180DEG

γ Interval: 1.0DEG

Test System:EVERFINE GO-SPEX500\_V1 SYSTEM V2.00.461

Humidity:65.0%

Test Distance:124.409" [K=1.0000]

Remarks: LAMP:BXRH-30G10T0-G-83 Ra:90

**WEC AND CCEC**

Test:U:17.655V I:0.5000A P:8.8275W PF:1.0000 Freq:49.99Hz Lamp Flux:1124.6x1 lm		
NAME: CTL-MM-1.5-30K-15-SQ-AD-OPS	TYPE:	WEIGHT:
SPEC.: 3000K	DIM.:	SERIAL No.: 2408221148
MFR.: MERCURY LIGHTING	SUR.: 0.002601m2	Shielding Angle:

cc	80%			70%			50%			30%			10%			0
w	50%	30%	10%	50%	30%	10%	50%	30%	10%	50%	30%	10%	50%	30%	10%	0
fc	20%			20%			20%			20%			20%			0
RCR	RCR:Room Cavity Ratio						Wall Exitance Coefficients(WEC)									
0.0																
1.0	.123	.070	.022	.118	.067	.021	.107	.061	.020	.097	.056	.018	.089	.051	.017	
2.0	.114	.063	.019	.109	.060	.019	.101	.056	.017	.093	.052	.016	.085	.048	.015	
3.0	.106	.056	.017	.102	.055	.016	.095	.051	.016	.088	.048	.015	.082	.045	.014	
4.0	.099	.051	.015	.095	.050	.015	.089	.047	.014	.083	.045	.014	.078	.042	.013	
5.0	.092	.047	.014	.089	.046	.013	.084	.044	.013	.079	.042	.012	.075	.040	.012	
6.0	.087	.043	.012	.084	.043	.012	.080	.041	.012	.076	.039	.012	.072	.038	.011	
7.0	.082	.041	.011	.080	.040	.011	.076	.038	.011	.072	.037	.011	.069	.036	.011	
8.0	.078	.038	.011	.076	.037	.011	.072	.036	.010	.069	.035	.010	.066	.034	.010	
9.0	.074	.036	.010	.072	.035	.010	.069	.034	.010	.066	.033	.010	.064	.032	.009	
10.0	.070	.034	.009	.069	.033	.009	.066	.032	.009	.064	.032	.009	.061	.031	.009	

cc	80%			70%			50%			30%			10%			0	
w	50%	30%	10%	50%	30%	10%	50%	30%	10%	50%	30%	10%	50%	30%	10%	0	
fc	20%			20%			20%			20%			20%			0	
RCR	RCR:Room Cavity Ratio						Ceiling Cavity Exitance Coefficients(CCEC)										
0.0	.161	.161	.161	.138	.138	.138	.094	.094	.094	.054	.054	.054	.017	.017	.017		
1.0	.143	.133	.125	.122	.114	.107	.084	.079	.074	.048	.046	.043	.015	.015	.014		
2.0	.128	.112	.099	.110	.097	.086	.075	.067	.060	.043	.039	.035	.014	.013	.011		
3.0	.115	.096	.080	.099	.083	.069	.068	.057	.049	.039	.034	.029	.013	.011	.009		
4.0	.105	.083	.066	.090	.072	.057	.062	.050	.040	.036	.029	.024	.012	.010	.008		
5.0	.096	.073	.055	.083	.063	.048	.057	.044	.034	.033	.026	.020	.011	.008	.007		
6.0	.088	.064	.047	.076	.056	.041	.052	.039	.029	.030	.023	.017	.010	.007	.006		
7.0	.082	.057	.040	.071	.050	.035	.049	.035	.025	.028	.020	.015	.009	.007	.005		
8.0	.076	.051	.034	.066	.045	.030	.045	.031	.021	.026	.018	.013	.009	.006	.004		
9.0	.071	.047	.030	.062	.041	.026	.043	.028	.019	.025	.017	.011	.008	.006	.004		
10.0	.067	.043	.026	.058	.037	.023	.040	.026	.016	.023	.015	.010	.008	.005	.003		

C Range: 0 - 360DEG

C Interval:For a lens beam angle of 15°

Test Speed: HIGH

Temperature:77.54 °F

Operators:zoe

Test Date:2024-8-22

γ Range: 0 - 180DEG

γ Interval: 1.0DEG

Test System:EVERFINE GO-SPEX500\_V1 SYSTEM V2.00.461

Humidity:65.0%

Test Distance:124.409" [K=1.0000]

Remarks: LAMP:BXRH-30G10T0-G-83 Ra:90

LENS:PM-1084 15R

NO DRIVER:500mA

30minutes warm-up

UGR(Unified Glare Rating) Table

Test:U:17.655V I:0.5000A P:8.8275W PF:1.0000 Freq:49.99Hz Lamp Flux:1124.6x1 lm											
NAME: CTL-MM-1.5-30K-15-SQ-AD-OPS					TYPE:			WEIGHT:			
SPEC.: 3000K					DIM.:			SERIAL No.: 2408221148			
MFR.: MERCURY LIGHTING					SUR.: 0.002601m2			Shielding Angle:			
ceiling/cavity	0.7	0.7	0.5	0.5	0.3	0.7	0.7	0.5	0.5	0.3	
walls	0.5	0.3	0.5	0.3	0.3	0.5	0.3	0.5	0.3	0.3	
working plane	0.2	0.2	0.2	0.2	0.2	0.2	0.2	0.2	0.2	0.2	
Room dimensions		Viewed crosswise					Viewed endwise				
x = 2H y = 2H	13.3	14.0	13.5	14.1	14.3	13.6	14.3	13.8	14.4	14.6	
	3H	14.5	15.1	14.7	15.3	15.5	14.7	15.4	15.0	15.5	
	4H	15.0	15.6	15.3	15.8	16.0	15.3	15.9	15.6	16.1	
	6H	15.4	16.0	15.7	16.2	16.5	15.8	16.4	16.1	16.6	
	8H	15.5	16.1	15.8	16.3	16.6	15.9	16.5	16.2	16.7	
	12H	15.5	16.1	15.8	16.3	16.6	16.0	16.5	16.3	16.8	
4H	2H	13.7	14.3	14.0	14.5	14.8	14.0	14.6	14.2	14.8	
	3H	15.1	15.7	15.4	15.9	16.2	15.4	15.9	15.7	16.2	
	4H	15.8	16.3	16.2	16.6	16.9	16.1	16.6	16.4	16.9	
	6H	16.4	16.8	16.7	17.1	17.5	16.7	17.1	17.1	17.5	
	8H	16.5	16.9	16.9	17.3	17.6	16.9	17.3	17.3	17.7	
	12H	16.5	16.9	16.9	17.2	17.6	17.0	17.3	17.4	17.7	
8H	4H	16.1	16.5	16.5	16.8	17.2	16.3	16.7	16.7	17.1	
	6H	16.8	17.1	17.2	17.5	17.9	17.1	17.4	17.5	17.8	
	8H	16.9	17.2	17.4	17.7	18.1	17.3	17.6	17.8	18.0	
	12H	17.0	17.2	17.4	17.7	18.1	17.4	17.7	17.9	18.1	
12H	4H	16.1	16.5	16.5	16.8	17.2	16.3	16.7	16.7	17.1	
	6H	16.8	17.1	17.2	17.5	18.0	17.1	17.4	17.5	17.8	
	8H	17.0	17.3	17.5	17.7	18.2	17.4	17.6	17.8	18.1	
Variations with the observer position at spacings(CIE Pub.117):											
S = 1.0H	+ 0.4 / - 0.5					+ 0.4 / - 0.4					
1.5H	+ 0.5 / - 0.4					+ 0.7 / - 0.3					
2.0H	+ 0.5 / - 0.4					+ 0.5 / - 0.4					

CIE Pub.117, 1125 lm Total Lamp Luminous Flux Correct (8log(F/F0) = 0.4)  
 Area: 0.002601 m2

C Range: 0 - 360DEG

C Interval:For a lens beam angle of 15°

Test Speed: HIGH

Temperature:77.54 °F

Operators:zoe

Test Date:2024-8-22

γ Range: 0 - 180DEG

γ Interval: 1.0DEG

Test System:EVERFINE GO-SPEX500\_V1 SYSTEM V2.00.461

Humidity:65.0%

Test Distance:124.409" [K=1.0000]

Remarks: LAMP:BXRH-30G10T0-G-83 Ra:90

LENS:PM-1084 15R

NO DRIVER:500mA

30minutes warm-up



**UTILIZATION FACTORS TABLE**

Test:U:17.655V I:0.5000A P:8.8275W PF:1.0000 Freq:49.99Hz Lamp Flux:1124.6x1 lm		
NAME: CTL-MM-1.5-30K-15-SQ-AD-OPS	TYPE:	WEIGHT:
SPEC.: 3000K	DIM.:	SERIAL No.: 2408221148
MFR.: MERCURY LIGHTING	SUR.: 0.002601m2	Shielding Angle:

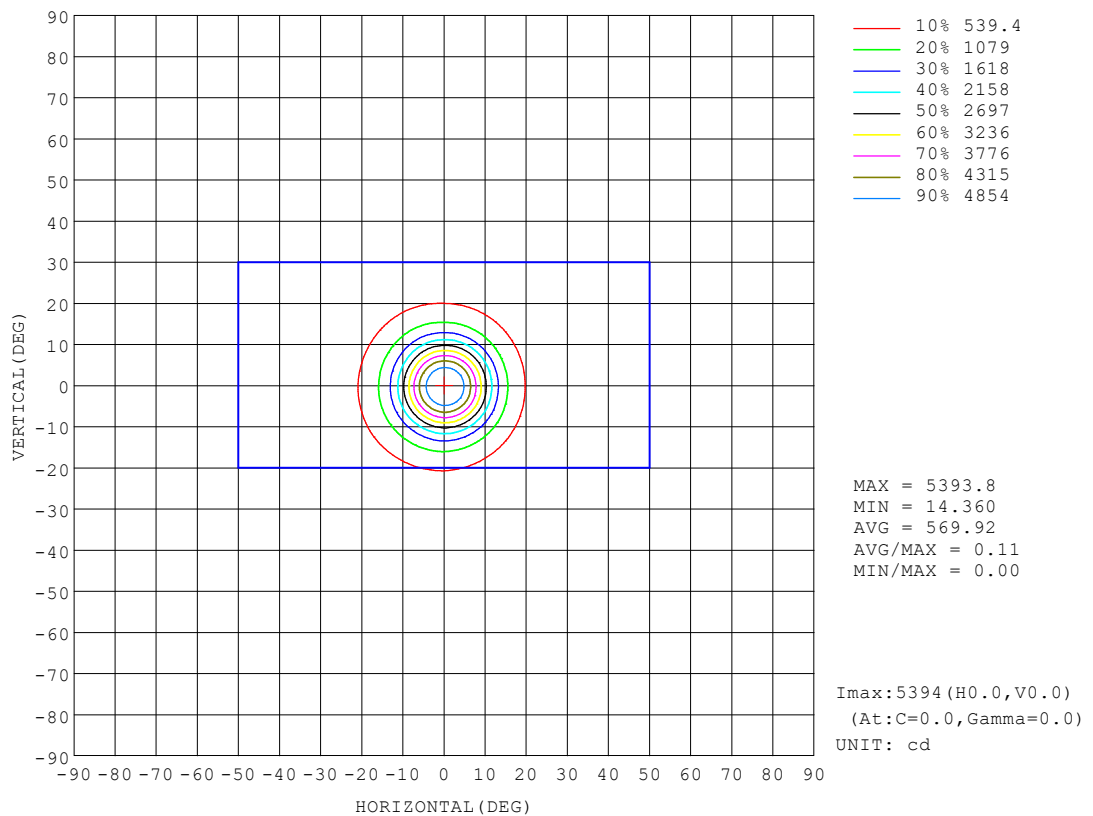
REFLECTANCE										
Ceiling	0.8	0.8	0.8	0.7	0.7	0.7	0.5	0.5	0.5	0
Walls	0.7	0.5	0.3	0.7	0.5	0.3	0.7	0.5	0.3	0
Working plane	0.2	0.2	0.2	0.2	0.2	0.2	0.2	0.2	0.2	0
ROOM INDEX	UTILIZATION FACTORS (PERCENT) $k(RI) \times RCR = 5$									
$k = 0.60$	74	69	66	74	69	66	73	69	66	63
0.80	81	76	73	80	75	72	79	75	72	69
1.00	84	79	76	83	79	76	82	79	76	72
1.25	87	83	80	86	83	80	85	82	79	76
1.50	90	86	83	89	85	82	87	84	81	78
2.00	92	88	86	91	87	85	88	86	84	79
2.50	93	90	87	92	89	87	89	87	85	80
3.00	94	92	89	93	90	88	90	88	87	81
4.00	96	94	92	94	93	91	91	90	89	83
5.00	97	95	94	96	94	93	92	91	90	84
ROOM INDEX	UF (total)									Direct
According to DIN EN 13032-2 2004			Suspended					SHRNOM = 1.25		

C Range: 0 - 360DEG  
 C Interval: For a lens beam angle of 15°  
 Test Speed: HIGH  
 Temperature: 77.54 °F  
 Operators: zoe  
 Test Date: 2024-8-22

γ Range: 0 - 180DEG  
 γ Interval: 1.0DEG  
 Test System: EVERFINE GO-SPEX500\_V1 SYSTEM V2.00.461  
 Humidity: 65.0%  
 Test Distance: 124.409" [K=1.0000]  
 Remarks: LAMP: BXRH-30G10T0-G-83 Ra:90  
 LENS: PM-1084 15R  
 NO DRIVER: 500mA  
 30minutes warm-up

## ISOCANDELA DIAGRAM

Test:U:17.655V I:0.5000A P:8.8275W PF:1.0000 Freq:49.99Hz Lamp Flux:1124.6x1 lm		
NAME: CTL-MM-1.5-30K-15-SQ-AD-OPS	TYPE:	WEIGHT:
SPEC.: 3000K	DIM.:	SERIAL No.: 2408221148
MFR.: MERCURY LIGHTING	SUR.: 0.002601m2	Shielding Angle:

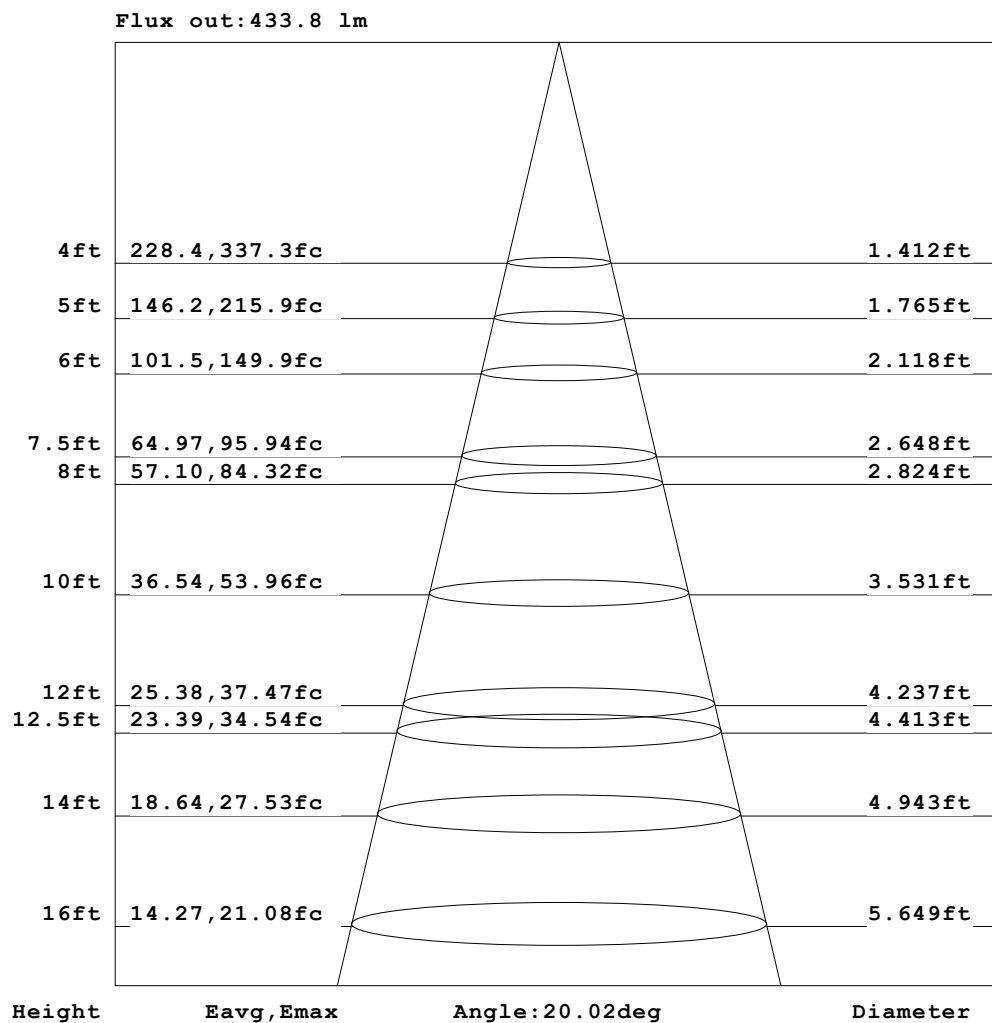


C Range: 0 - 360DEG  
 C Interval: For a lens beam angle of 15°  
 Test Speed: HIGH  
 Temperature: 77.54 °F  
 Operators: zoe  
 Test Date: 2024-8-22

γ Range: 0 - 180DEG  
 γ Interval: 1.0DEG  
 Test System: EVERFINE GO-SPEX500\_V1 SYSTEM V2.00.461  
 Humidity: 65.0%  
 Test Distance: 124.409" [K=1.0000]  
 Remarks: LAMP: BXRH-30G10T0-G-83 Ra: 90  
 LENS: PM-1084 15R  
 NO DRIVER: 500mA  
 30minutes warm-up

**AAI Figure**

Test:U:17.655V I:0.5000A P:8.8275W PF:1.0000 Freq:49.99Hz Lamp Flux:1124.6x1 lm		
NAME: CTL-MM-1.5-30K-15-SQ-AD-OPS	TYPE:	WEIGHT:
SPEC.: 3000K	DIM.:	SERIAL No.: 2408221148
MFR.: MERCURY LIGHTING	SUR.: 0.002601m2	Shielding Angle:



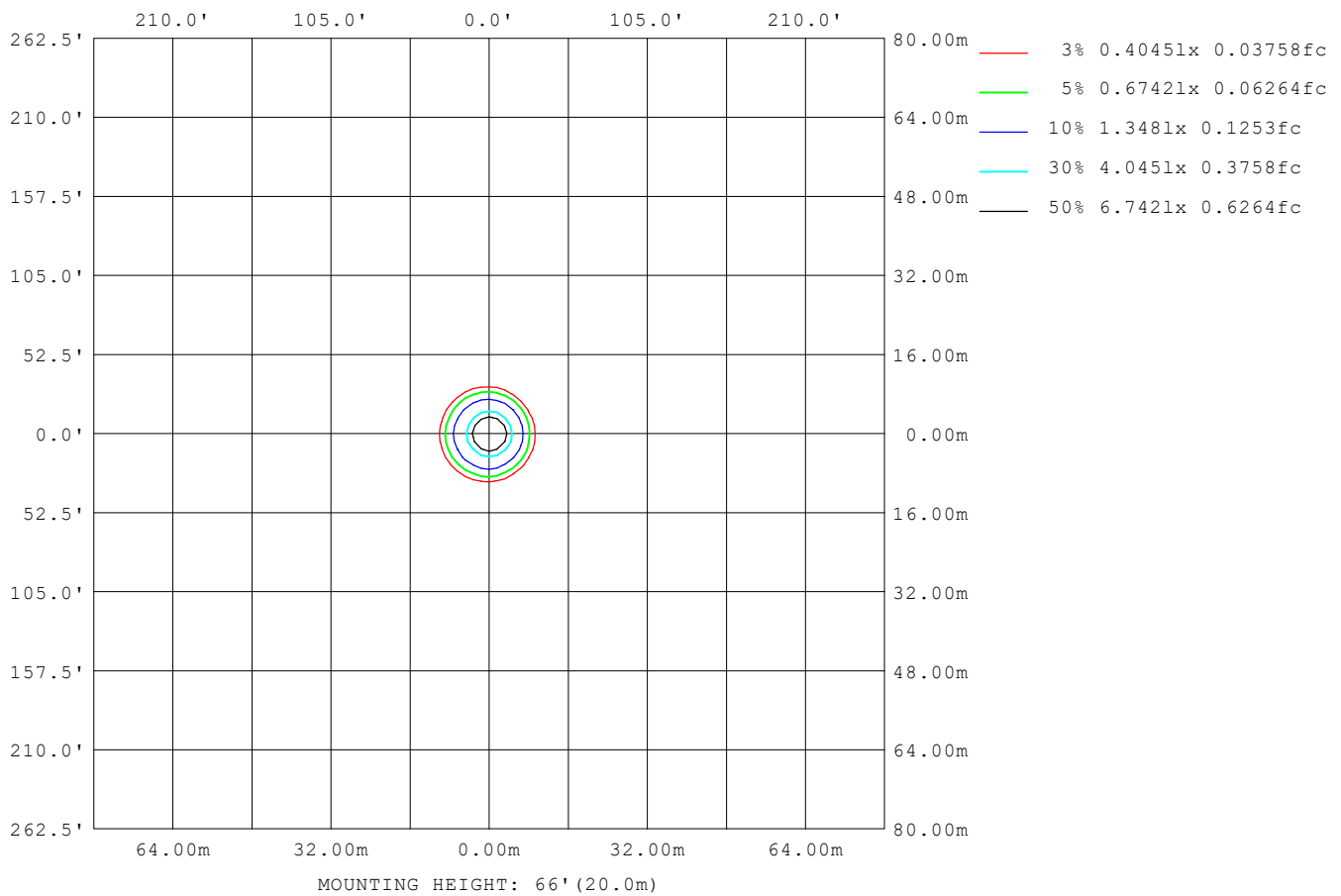
Note: The Curves indicate the illuminated area and the average illumination when the luminaire is at different distance.

C Range: 0 - 360DEG  
 C Interval: For a lens beam angle of 15°  
 Test Speed: HIGH  
 Temperature: 77.54 °F  
 Operators: zoe  
 Test Date: 2024-8-22

γ Range: 0 - 180DEG  
 γ Interval: 1.0DEG  
 Test System: EVERFINE GO-SPEX500\_V1 SYSTEM V2.00.461  
 Humidity: 65.0%  
 Test Distance: 124.409" [K=1.0000]  
 Remarks: LAMP: BXRH-30G10T0-G-83 Ra:90  
 LENS: PM-1084 15R  
 NO DRIVER: 500mA  
 30minutes warm-up

**ISOLUX DIAGRAM**

<b>Test:</b> U:17.655V I:0.5000A P:8.8275W PF:1.0000 Freq:49.99Hz <b>Lamp Flux:</b> 1124.6x1 lm		
<b>NAME:</b> CTL-MM-1.5-30K-15-SQ-AD-OPS	<b>TYPE:</b>	<b>WEIGHT:</b>
<b>SPEC.:</b> 3000K	<b>DIM.:</b>	<b>SERIAL No.:</b> 2408221148
<b>MFR.:</b> MERCURY LIGHTING	<b>SUR.:</b> 0.002601m2	<b>Shielding Angle:</b>



**C Range:** 0 - 360DEG  
**C Interval:** For a lens beam angle of 15°  
**Test Speed:** HIGH  
**Temperature:** 77.54 °F  
**Operators:** zoe  
**Test Date:** 2024-8-22

**γ Range:** 0 - 180DEG  
**γ Interval:** 1.0DEG  
**Test System:** EVERFINE GO-SPEX500\_V1 SYSTEM V2.00.461  
**Humidity:** 65.0%  
**Test Distance:** 124.409" [K=1.0000]  
**Remarks:** LAMP: BXRH-30G10T0-G-83 Ra:90  
 LENS: PM-1084 15R  
 NO DRIVER: 500mA  
 30minutes warm-up

**LED Avg.L Report**

Test:U:17.655V I:0.5000A P:8.8275W PF:1.0000 Freq:49.99Hz Lamp Flux:1124.6x1 lm		
NAME: CTL-MM-1.5-30K-15-SQ-AD-OPS	TYPE:	WEIGHT:
SPEC.: 3000K	DIM.:	SERIAL No.: 2408221148
MFR.: MERCURY LIGHTING	SUR.: 0.002601m2	Shielding Angle:

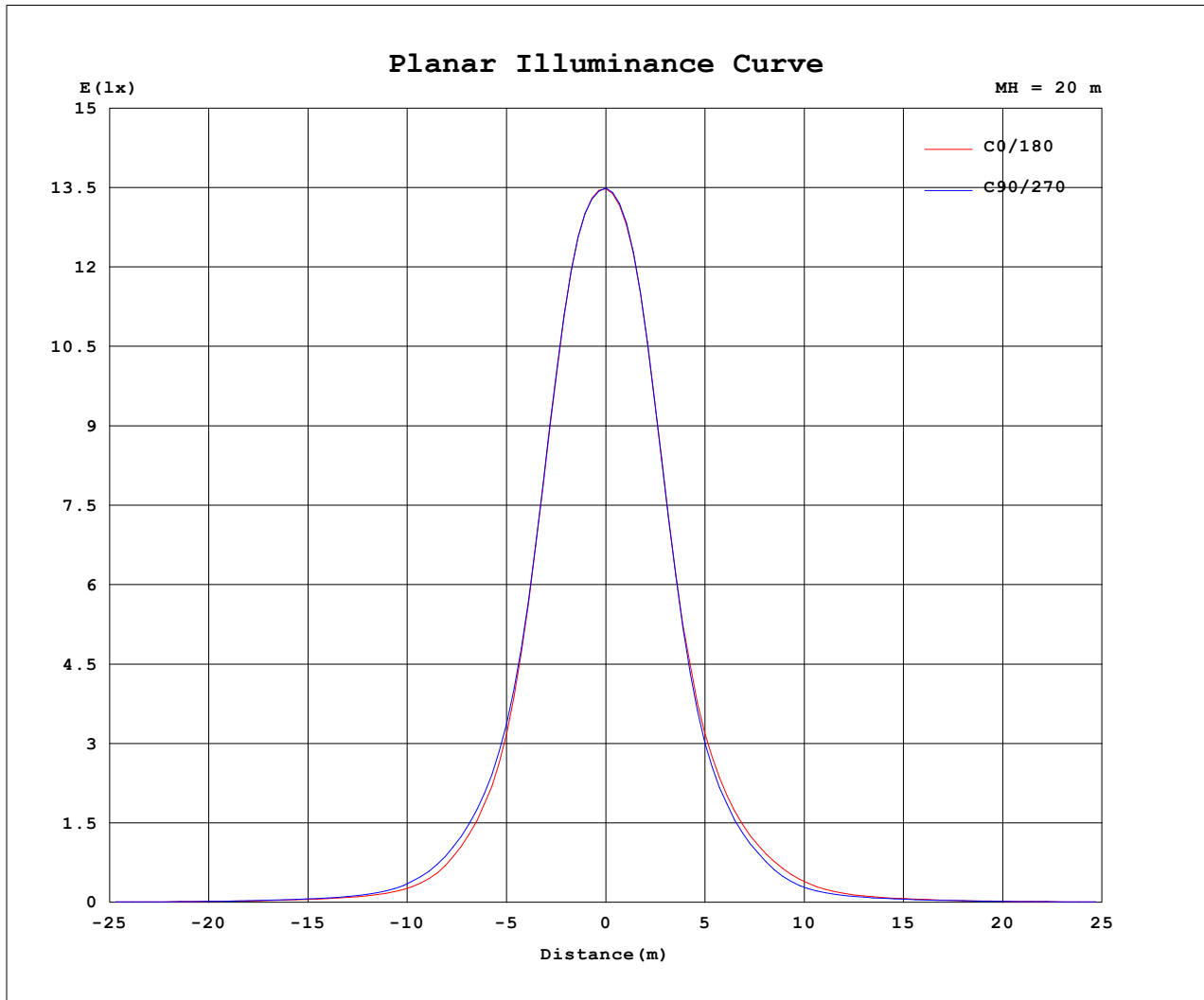
AvgL	cd/m2
L_0~180 (65) av	9315
L_0~180 (75) av	9474
L_0~180 (85) av	3886
L_90~270 (65) av	9258
L_90~270 (75) av	9330
L_90~270 (85) av	3720
L_45 (65) av	9298
L_45 (75) av	9400
L_45 (85) av	4825

Standard: GB/T 29293-2012

C Range: 0 - 360DEG  
 C Interval: For a lens beam angle of 15°  
 Test Speed: HIGH  
 Temperature: 77.54 °F  
 Operators: zoe  
 Test Date: 2024-8-22

γ Range: 0 - 180DEG  
 γ Interval: 1.0DEG  
 Test System: EVERFINE GO-SPEX500\_V1 SYSTEM V2.00.461  
 Humidity: 65.0%  
 Test Distance: 124.409" [K=1.0000]  
 Remarks: LAMP: BXRH-30G10T0-G-83 Ra: 90  
 LENS: PM-1084 15R  
 NO DRIVER: 500mA  
 30minutes warm-up

Planar Illuminance Curve



C Range: 0 - 360DEG  
C Interval: For a lens beam angle of 15°  
Test Speed: HIGH  
Temperature: 77.54 °F  
Operators: zoe  
Test Date: 2024-8-22

γ Range: 0 - 180DEG  
γ Interval: 1.0DEG  
Test System: EVERFINE GO-SPEX500\_V1 SYSTEM V2.00.461  
Humidity: 65.0%  
Test Distance: 124.409" [K=1.0000]  
Remarks: LAMP: BXRH-30G10T0-G-83 Ra: 90  
LENS: PM-1084 15R  
NO DRIVER: 500mA  
30minutes warm-up

**LUMINOUS DISTRIBUTION INTENSITY DATA**

Test:U:17.655V I:0.5000A P:8.8275W PF:1.0000 Freq:49.99Hz Lamp Flux:1124.6x1 lm		
NAME: CTL-MM-1.5-30K-15-SQ-AD-OPS	TYPE:	WEIGHT:
SPEC.: 3000K	DIM.:	SERIAL No.: 2408221148
MFR.: MERCURY LIGHTING	SUR.: 0.002601m2	Shielding Angle:

Table--1

UNIT: cd

C (DEG) (DEG)	0	30	60	90	120	150	180	210	240	270	300	330						
0	5395	5395	5395	5395	5395	5395	5395	5395	5395	5395	5395	5395						
5	4823	4859	4846	4823	4766	4713	4661	4620	4636	4661	4726	4781						
10	2818	2875	2856	2826	2738	2661	2594	2549	2568	2583	2667	2751						
15	1175	1221	1237	1269	1252	1243	1220	1181	1172	1136	1141	1146						
20	515	537	560	604	610	622	610	578	565	537	526	513						
25	198	219	233	261	274	291	288	265	246	216	201	190						
30	92.5	98.9	105	114	119	126	129	119	110	96.5	88.5	88.7						
35	55.7	57.9	60.6	65.3	67.6	70.6	70.4	67.0	63.1	58.6	55.3	54.4						
40	38.0	39.0	39.9	42.5	43.8	45.5	45.5	43.9	42.2	40.3	38.7	37.9						
45	26.1	26.3	26.4	27.3	27.9	28.6	28.5	28.3	27.9	27.5	27.0	26.4						
50	19.8	20.0	20.2	20.7	21.1	21.3	21.3	21.1	21.2	20.9	20.8	20.2						
55	15.0	15.2	15.5	15.8	16.3	16.4	16.3	16.3	16.3	16.1	15.9	15.4						
60	11.9	12.0	12.1	12.4	12.8	13.0	12.9	12.9	12.8	12.6	12.4	12.1						
65	9.85	9.89	9.94	10.1	10.4	10.6	10.6	10.6	10.4	10.2	10.1	9.89						
70	7.96	8.04	8.16	8.40	8.68	8.89	8.96	8.84	8.65	8.37	8.15	7.99						
75	5.82	5.90	6.03	6.30	6.59	6.85	6.94	6.82	6.58	6.27	6.01	5.85						
80	3.38	3.64	3.83	4.03	4.32	4.54	4.52	4.51	4.14	3.66	3.65	3.52						
85	0.52	0.89	1.07	1.12	1.51	1.57	1.25	1.26	0.99	0.56	0.66	0.59						
90	0.00	0.00	0.00	0.00	0.00	0.00	0.00	0.00	0.00	0.00	0.00	0.00						
95	0.00	0.00	0.00	0.00	0.00	0.00	0.00	0.00	0.00	0.00	0.00	0.00						
100	0.00	0.00	0.00	0.00	0.00	0.00	0.00	0.00	0.00	0.00	0.00	0.00						
105	0.00	0.00	0.00	0.00	0.00	0.00	0.00	0.00	0.00	0.00	0.00	0.00						
110	0.00	0.00	0.00	0.00	0.00	0.00	0.00	0.00	0.00	0.00	0.00	0.00						
115	0.00	0.00	0.00	0.00	0.00	0.00	0.00	0.00	0.00	0.00	0.00	0.00						
120	0.00	0.00	0.00	0.00	0.00	0.00	0.00	0.00	0.00	0.00	0.00	0.00						
125	0.00	0.00	0.00	0.00	0.00	0.00	0.00	0.00	0.00	0.00	0.00	0.00						
130	0.00	0.00	0.00	0.00	0.00	0.00	0.00	0.00	0.00	0.00	0.00	0.00						
135	0.00	0.00	0.00	0.00	0.00	0.00	0.00	0.00	0.00	0.00	0.00	0.00						
140	0.00	0.00	0.00	0.00	0.00	0.00	0.00	0.00	0.00	0.00	0.00	0.00						
145	0.00	0.00	0.00	0.00	0.00	0.00	0.00	0.00	0.00	0.00	0.00	0.00						
150	0.00	0.00	0.00	0.00	0.00	0.00	0.00	0.00	0.00	0.00	0.00	0.00						
155	0.00	0.00	0.00	0.00	0.00	0.00	0.00	0.00	0.00	0.00	0.00	0.00						
160	0.00	0.00	0.00	0.00	0.00	0.00	0.00	0.00	0.00	0.00	0.00	0.00						
165	0.00	0.00	0.00	0.00	0.00	0.00	0.00	0.00	0.00	0.00	0.00	0.00						
170	0.00	0.00	0.00	0.00	0.00	0.00	0.00	0.00	0.00	0.00	0.00	0.00						
175	0.00	0.00	0.00	0.00	0.00	0.00	0.00	0.00	0.00	0.00	0.00	0.00						
180	0.00	0.00	0.00	0.00	0.00	0.00	0.00	0.00	0.00	0.00	0.00	0.00						

C Range: 0 - 360DEG

C Interval: For a lens beam angle of 15°

Test Speed: HIGH

Temperature: 77.54 °F

Operators: zoe

Test Date: 2024-8-22

γ Range: 0 - 180DEG

γ Interval: 1.0DEG

Test System: EVERFINE GO-SPEX500\_V1 SYSTEM V2.00.461

Humidity: 65.0%

Test Distance: 124.409" [K=1.0000]

Remarks: LAMP: BXRH-30G10T0-G-83 Ra: 90

LENS: PM-1084 15R

NO DRIVER: 500mA

30minutes warm-up