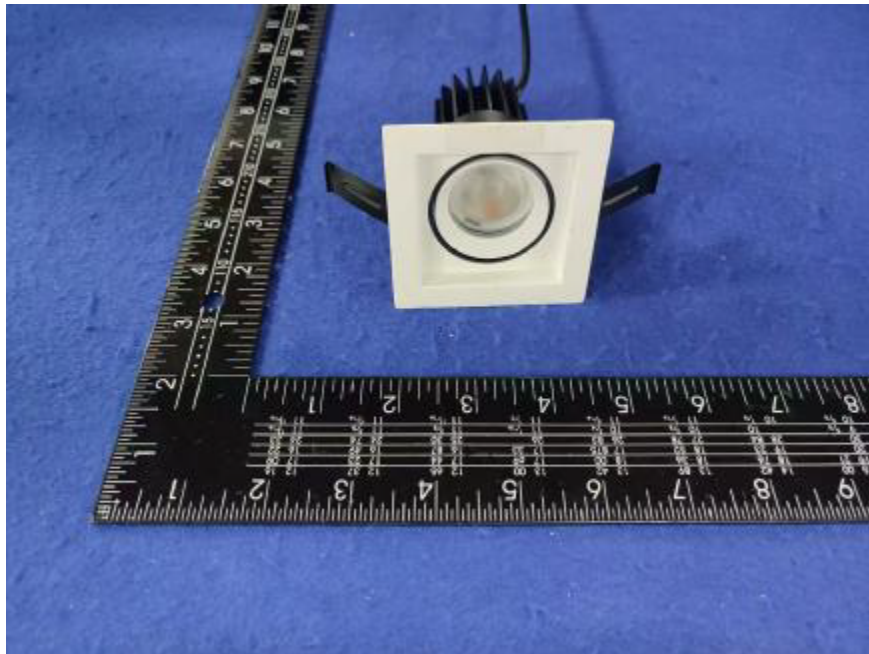


Photometric Report for each Light Engine  
used in double and triple configuration  
for Flanged and Flangeless Trim



Light Output Ratio:	84.2%	
Luminaire Power:	8.828 W	
SHR Nominal:	0.75	Calculated using the TM5
SHR Maximum:	0.85	fine grid method.

C Range: 0 - 360DEG	γ Range: 0 - 180DEG
C Interval: For a lens beam angle of 60°	γ Interval: 1.0DEG
Test Speed: HIGH	Test System: EVERFINE GO-SPEX500_V1 SYSTEM V2.00.461
Temperature: 77.54°F	Humidity: 65.0%
Operators: zoe	Test Distance: 124.409" [K=1.0000]
Test Date: 2024-8-23	Remarks: LAMP: BXRH-30G10T0-G-83 Ra: 90
	LENS: PM-1084C 50R
	NO DRIVER: 500mA
	30minutes warm-up

LUMINOUS INTENSITY DISTRIBUTION DIAGRAM

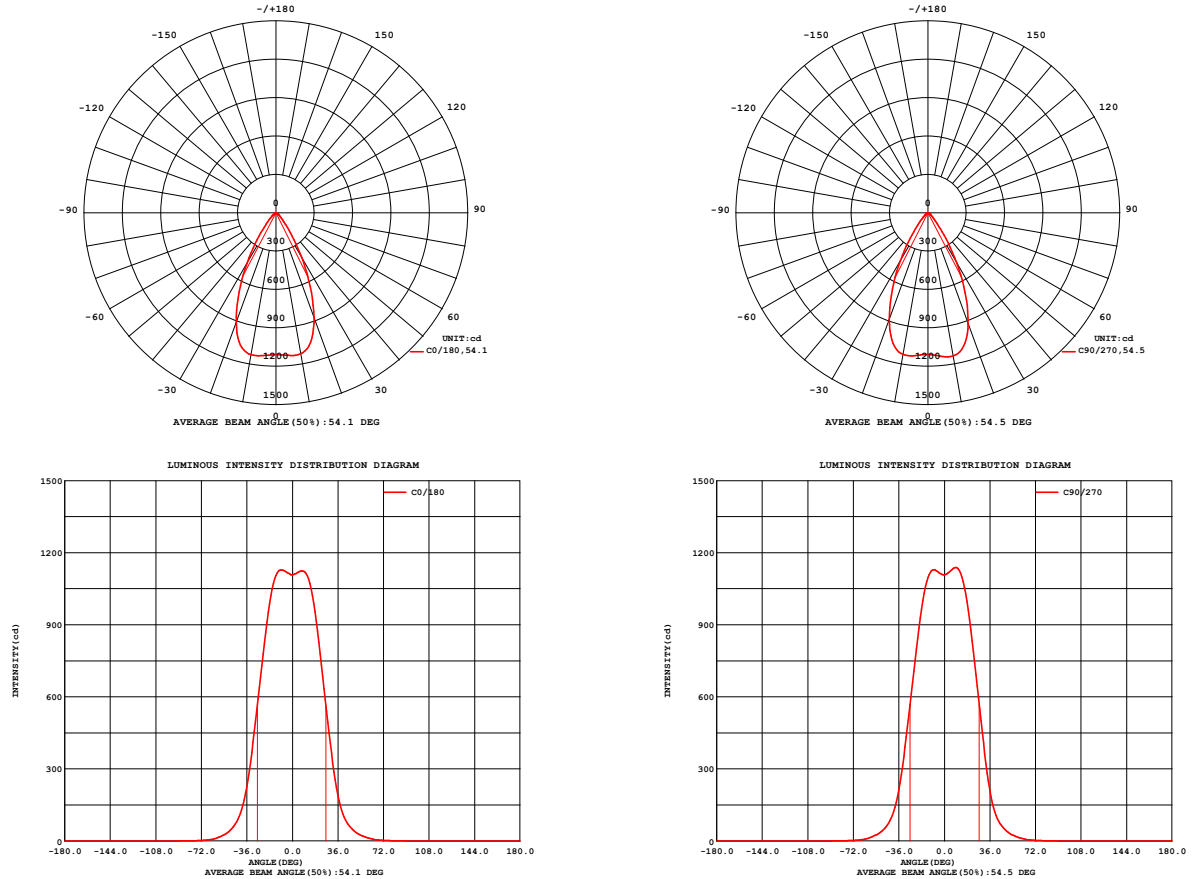


Fig. C0/C180

Fig. C90/C270

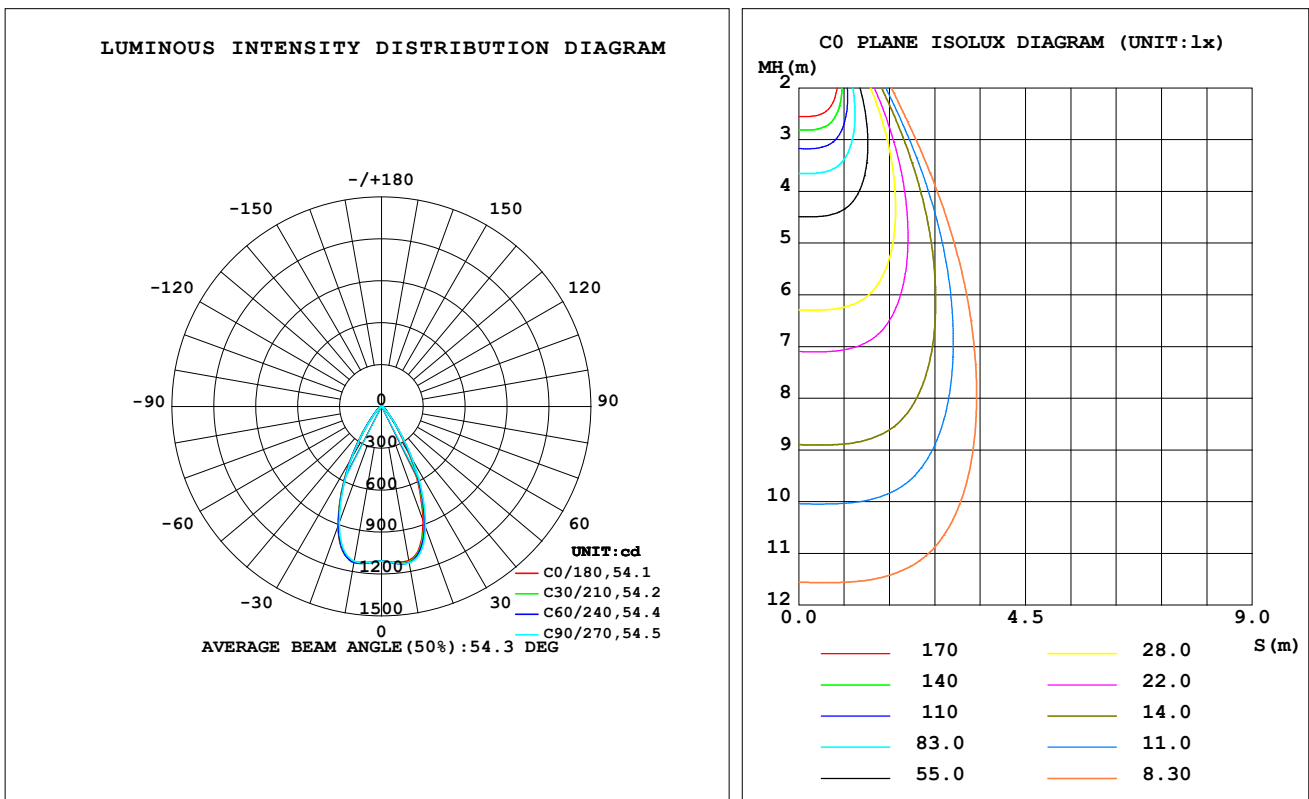
C Range: 0 - 360DEG  
C Interval: For a lens beam angle of 60°  
Test Speed: HIGH  
Temperature: 77.54 °F  
Operators: zoe  
Test Date: 2024-8-23

γ Range: 0 - 180DEG  
γ Interval: 1.0DEG  
Test System: EVERFINE GO-SPEX500\_V1 SYSTEM V2.00.461  
Humidity: 65.0%  
Test Distance: 124.409" [K=1.0000]  
Remarks: LAMP: BXRH-30G10T0-G-83 Ra: 90  
LENS: PM-1084C 50R  
NO DRIVER: 500mA  
30minutes warm-up

## LUMINAIRE PHOTOMETRIC TEST REPORT

Test:U:17.657V I:0.5000A P:8.8285W PF:1.0000 Freq:49.99Hz Lamp Flux:1124.6x1 lm		
NAME: CTL-MM-1.5-30K-60-SQ-AD-OPL	TYPE:	WEIGHT:
SPEC.: 3000K	DIM.:	SERIAL No.: 2408231155
MFR.: MERCURY LIGHTING	SUR.: 0.002601m2	Shielding Angle:

DATA OF LAMP		PHOTOMETRIC DATA Eff: 107.28 lm/W			
MODEL	Brideglux	I <sub>max</sub> (cd)	1139	S/MH (C0/180)	0.83
NOMINAL POWER (W)	9	LOR (%)	84.2	S/MH (C90/270)	0.82
RATED VOLTAGE (V)	18	TOTAL FLUX (lm)	947.14	η UP, DN (C0-180)	0.0, 42.1
NOMINAL FLUX (lm)	1124.6	CIE CLASS	DIRECT	η UP, DN (C180-360)	0.0, 42.1
LAMPS INSIDE	1	η up (%)	0.0	CIBSE SHR NOM	0.75
TEST VOLTAGE (V)	18	η down (%)	84.2	CIBSE SHR MAX	0.85



C Range: 0 - 360DEG

C Interval: For a lens beam angle of 60°

Test Speed: HIGH

Temperature: 77.54 °F

Operators: zoe

Test Date: 2024-8-23

γ Range: 0 - 180DEG

γ Interval: 1.0DEG

Test System: EVERFINE GO-SPEX500\_V1 SYSTEM V2.00.461

Humidity: 65.0%

Test Distance: 124.409" [K=1.0000]

Remarks: LAMP: BXRH-30G10T0-G-83 Ra: 90

LENS: PM-1084C 50R

NO DRIVER: 500mA

30minutes warm-up

### ZONAL FLUX DIAGRAM

#### ZONAL FLUX DIAGRAM:

$\gamma$	C0	C45	C90	C135	C180	C225	C270	C315	$\gamma$	$\Phi$ zone	$\Phi$ total	%lum,lamp
10	1119	1133	1137	1126	1127	1134	1124	1114	0- 10	107.3	107.3	11.3,9.54
20	872.1	896.3	920.8	908.0	910.7	902.3	886.7	872.2	10- 20	292.4	399.7	42.2,35.5
30	405.3	431.7	452.9	449.2	454.6	445.0	433.6	420.6	20- 30	302.3	702.0	74.1,62.4
40	112.3	118.5	120.6	124.6	131.9	129.9	122.7	117.1	30- 40	156.3	858.3	90.6,76.3
50	37.01	41.92	37.86	42.82	39.93	44.37	37.80	41.22	40- 50	55.16	913.5	96.4,81.2
60	12.58	16.02	12.52	15.60	11.79	15.87	11.93	15.71	50- 60	22.98	936.5	98.9,83.3
70	3.309	4.104	3.226	3.684	2.812	3.481	2.845	3.885	60- 70	7.786	944.2	99.7,84
80	1.117	1.335	1.035	1.099	0.8529	1.019	0.8993	1.239	70- 80	2.164	946.4	99.9,84.2
90	0	0	0	0	0	0	0	0	80- 90	0.7371	947.1	100,84.2
100	0	0	0	0	0	0	0	0	90-100	0	947.1	100,84.2
110	0	0	0	0	0	0	0	0	100-110	0	947.1	100,84.2
120	0	0	0	0	0	0	0	0	110-120	0	947.1	100,84.2
130	0	0	0	0	0	0	0	0	120-130	0	947.1	100,84.2
140	0	0	0	0	0	0	0	0	130-140	0	947.1	100,84.2
150	0	0	0	0	0	0	0	0	140-150	0	947.1	100,84.2
160	0	0	0	0	0	0	0	0	150-160	0	947.1	100,84.2
170	0	0	0	0	0	0	0	0	160-170	0	947.1	100,84.2
180	0	0	0	0	0	0	0	0	170-180	0	947.1	100,84.2
DEG	LUMINOUS INTENSITY:cd									UNIT:lm		

C Range: 0 - 360DEG

C Interval:For a lens beam angle of 60°

Test Speed: HIGH

Temperature:77.54°F

Operators:zoe

Test Date:2024-8-23

 $\gamma$  Range: 0 - 180DEG

 $\gamma$  Interval: 1.0DEG

Test System:EVERFINE GO-SPEX500\_V1 SYSTEM V2.00.461

Humidity:65.0%

Test Distance:124.409" [K=1.0000]

Remarks: LAMP:BXRH-30G10T0-G-83 Ra:90

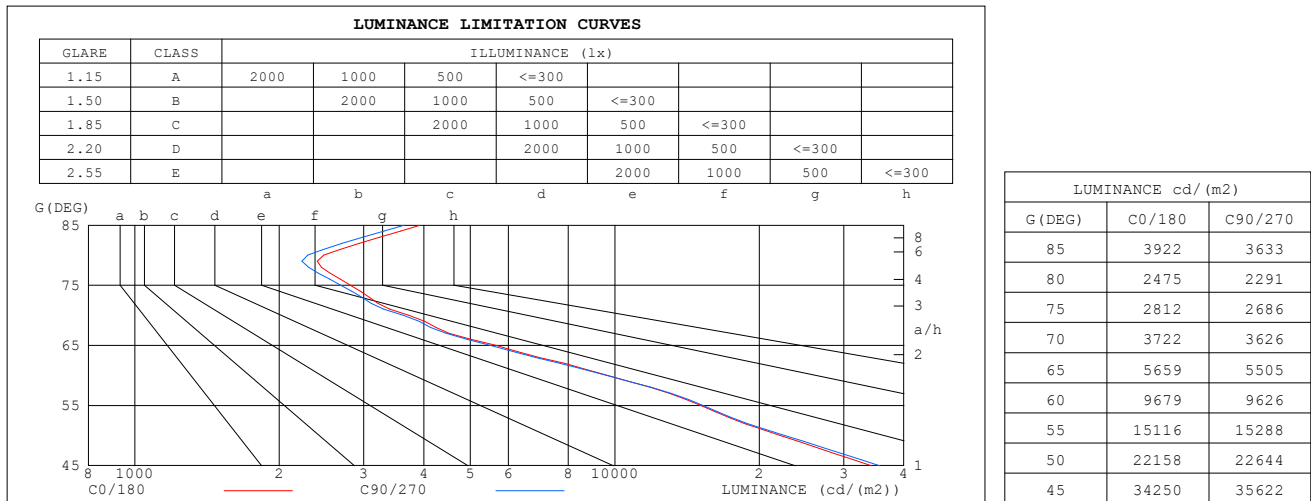
LENS:PM-1084C 50R

NO DRIVER:500mA

30minutes warm-up

## LUMINANCE LIMITATION CURVES

Test:U:17.657V I:0.5000A P:8.8285W PF:1.0000 Freq:49.99Hz Lamp Flux:1124.6x1 lm		
NAME: CTL-MM-1.5-30K-60-SQ-AD-OPL	TYPE:	WEIGHT:
SPEC.: 3000K	DIM.:	SERIAL No.: 2408231155
MFR.: MERCURY LIGHTING	SUR.: 0.002601m2	Shielding Angle:

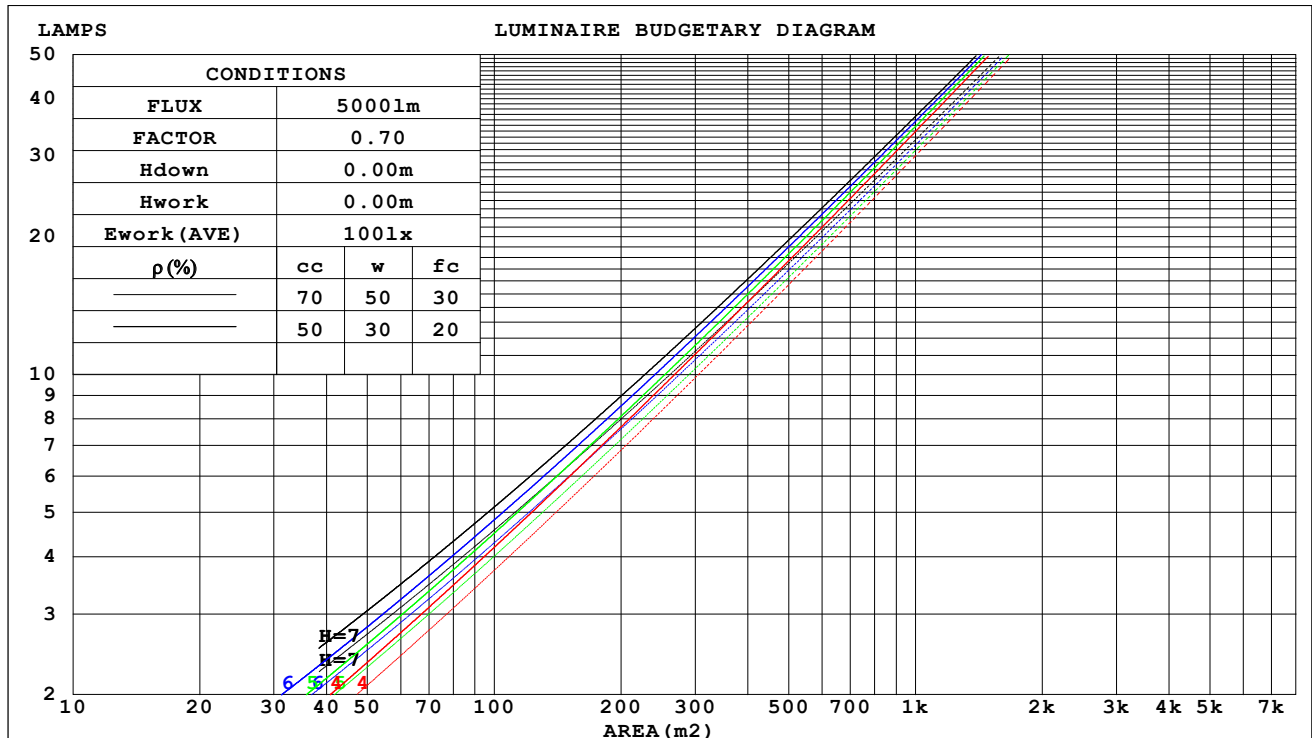


C Range: 0 - 360DEG	γ Range: 0 - 180DEG
C Interval: For a lens beam angle of 60°	γ Interval: 1.0DEG
Test Speed: HIGH	Test System: EVERFINE GO-SPEX500_V1 SYSTEM V2.00.461
Temperature: 77.54°F	Humidity: 65.0%
Operators: zoe	Test Distance: 124.409" [K=1.0000]
Test Date: 2024-8-23	Remarks: LAMP: BXRH-30G10T0-G-83 Ra: 90
	LENS: PM-1084C 50R
	NO DRIVER: 500mA
	30minutes warm-up

## CU AND LUMINAIRE BUDGETARY ESTIMATE DIAGRAM

Test:U:17.657V I:0.5000A P:8.8285W PF:1.0000 Freq:49.99Hz Lamp Flux:1124.6x1 lm		
NAME: CTL-MM-1.5-30K-60-SQ-AD-OPL	TYPE:	WEIGHT:
SPEC.: 3000K	DIM.:	SERIAL No.: 2408231155
MFR.: MERCURY LIGHTING	SUR.: 0.002601m2	Shielding Angle:

pcc	80%			70%			50%			30%			10%			0
pw	50%	30%	10%	50%	30%	10%	50%	30%	10%	50%	30%	10%	50%	30%	10%	0
pfc	20%			20%			20%			20%			20%			0
RCR	RCR:Room Cavity Ratio                      Coefficients of Utilization(CU)															
0.0	1.00	1.00	1.00	.98	.98	.98	.94	.94	.94	.90	.90	.90	.86	.86	.86	.84
1.0	.93	.91	.89	.91	.90	.88	.88	.87	.85	.85	.84	.83	.82	.81	.80	.79
2.0	.87	.83	.81	.85	.82	.80	.83	.80	.78	.80	.78	.76	.78	.76	.75	.73
3.0	.81	.77	.73	.80	.76	.73	.78	.74	.72	.76	.73	.71	.74	.71	.70	.68
4.0	.76	.71	.68	.75	.70	.67	.73	.69	.66	.71	.68	.66	.70	.67	.65	.64
5.0	.71	.66	.63	.70	.66	.62	.69	.65	.62	.67	.64	.61	.66	.63	.61	.59
6.0	.67	.62	.58	.66	.61	.58	.65	.61	.58	.64	.60	.57	.63	.59	.57	.56
7.0	.63	.58	.54	.62	.58	.54	.61	.57	.54	.60	.57	.54	.59	.56	.53	.52
8.0	.59	.54	.51	.59	.54	.51	.58	.54	.51	.57	.53	.51	.56	.53	.50	.49
9.0	.56	.51	.48	.56	.51	.48	.55	.51	.48	.54	.50	.48	.54	.50	.47	.46
10.0	.53	.49	.45	.53	.48	.45	.52	.48	.45	.52	.48	.45	.51	.47	.45	.44



C Range: 0 - 360DEG	γ Range: 0 - 180DEG
C Interval: For a lens beam angle of 60°	γ Interval: 1.0DEG
Test Speed: HIGH	Test System: EVERFINE GO-SPEX500_V1 SYSTEM V2.00.461
Temperature: 77.54 °F	Humidity: 65.0%
Operators: zoe	Test Distance: 124.409" [K=1.0000]
Test Date: 2024-8-23	Remarks: LAMP: BXRH-30G10T0-G-83 Ra: 90
	LENS: PM-1084C 50R
	NO DRIVER: 500mA
	30minutes warm-up

**WEC AND CCEC**

Test:U:17.657V I:0.5000A P:8.8285W PF:1.0000 Freq:49.99Hz Lamp Flux:1124.6x1 lm		
NAME: CTL-MM-1.5-30K-60-SQ-AD-OPL	TYPE:	WEIGHT:
SPEC.: 3000K	DIM.:	SERIAL No.: 2408231155
MFR.: MERCURY LIGHTING	SUR.: 0.002601m2	Shielding Angle:

pcc	80%			70%			50%			30%			10%			0
pw	50%	30%	10%	50%	30%	10%	50%	30%	10%	50%	30%	10%	50%	30%	10%	0
pfc	20%			20%			20%			20%			20%			0
RCR	RCR:Room Cavity Ratio						Wall Exitance Coefficients(WEC)									
0.0																
1.0	.150	.086	.027	.145	.083	.026	.134	.077	.025	.124	.072	.023	.115	.067	.022	
2.0	.144	.079	.024	.139	.077	.024	.130	.072	.022	.122	.068	.021	.114	.065	.020	
3.0	.137	.073	.022	.133	.071	.021	.125	.068	.021	.118	.065	.020	.112	.062	.019	
4.0	.130	.068	.020	.127	.066	.020	.120	.064	.019	.114	.061	.018	.108	.059	.018	
5.0	.124	.063	.018	.121	.062	.018	.115	.060	.018	.110	.058	.017	.105	.056	.017	
6.0	.118	.059	.017	.115	.058	.017	.110	.057	.016	.106	.055	.016	.101	.053	.016	
7.0	.113	.056	.016	.110	.055	.016	.106	.053	.015	.102	.052	.015	.098	.051	.015	
8.0	.108	.053	.015	.106	.052	.015	.102	.051	.014	.098	.050	.014	.094	.048	.014	
9.0	.103	.050	.014	.101	.049	.014	.098	.048	.014	.094	.047	.014	.091	.046	.013	
10.0	.099	.047	.013	.097	.047	.013	.094	.046	.013	.091	.045	.013	.088	.044	.013	

pcc	80%			70%			50%			30%			10%			0
pw	50%	30%	10%	50%	30%	10%	50%	30%	10%	50%	30%	10%	50%	30%	10%	0
pfc	20%			20%			20%			20%			20%			0
RCR	RCR:Room Cavity Ratio						Ceiling Cavity Exitance Coefficients(CCEC)									
0.0	.160	.160	.160	.137	.137	.137	.094	.094	.094	.054	.054	.054	.017	.017	.017	
1.0	.144	.132	.122	.123	.114	.105	.084	.078	.073	.049	.045	.042	.016	.015	.014	
2.0	.131	.112	.095	.113	.096	.082	.077	.066	.057	.044	.039	.034	.014	.013	.011	
3.0	.121	.096	.075	.104	.083	.065	.071	.057	.046	.041	.033	.027	.013	.011	.009	
4.0	.112	.083	.061	.096	.072	.053	.066	.050	.037	.038	.029	.022	.012	.010	.007	
5.0	.105	.074	.050	.090	.064	.044	.062	.044	.031	.036	.026	.018	.012	.009	.006	
6.0	.099	.066	.042	.085	.057	.036	.059	.040	.026	.034	.023	.015	.011	.008	.005	
7.0	.093	.059	.035	.080	.051	.031	.055	.036	.022	.032	.021	.013	.010	.007	.004	
8.0	.089	.054	.030	.076	.047	.026	.053	.033	.019	.031	.019	.011	.010	.006	.004	
9.0	.084	.050	.026	.073	.043	.023	.050	.030	.016	.029	.018	.010	.009	.006	.003	
10.0	.080	.046	.023	.069	.040	.020	.048	.028	.014	.028	.017	.009	.009	.005	.003	

C Range: 0 - 360DEG

C Interval:For a lens beam angle of 60°

Test Speed: HIGH

Temperature:77.54 °F

Operators:zoe

Test Date:2024-8-23

γ Range: 0 - 180DEG

γ Interval: 1.0DEG

Test System:EVERFINE GO-SPEX500\_V1 SYSTEM V2.00.461

Humidity:65.0%

Test Distance:124.409" [K=1.0000]

Remarks: LAMP:BXRH-30G10T0-G-83 Ra:90

LENS:PM-1084C 50R

NO DRIVER:500mA

30minutes warm-up

UGR(Unified Glare Rating) Table

Test:U:17.657V I:0.5000A P:8.8285W PF:1.0000 Freq:49.99Hz Lamp Flux:1124.6x1 lm											
NAME: CTL-MM-1.5-30K-60-SQ-AD-OPL					TYPE:			WEIGHT:			
SPEC.: 3000K					DIM.:			SERIAL No.: 2408231155			
MFR.: MERCURY LIGHTING					SUR.: 0.002601m2			Shielding Angle:			
ceiling/cavity	0.7	0.7	0.5	0.5	0.3	0.7	0.7	0.5	0.5	0.3	
walls	0.5	0.3	0.5	0.3	0.3	0.5	0.3	0.5	0.3	0.3	
working plane	0.2	0.2	0.2	0.2	0.2	0.2	0.2	0.2	0.2	0.2	
Room dimensions	Viewed crosswise					Viewed endwise					
x = 2H y = 2H	2H	19.6	20.6	19.8	20.7	20.9	19.9	20.8	20.1	21.0	21.1
	3H	19.5	20.4	19.8	20.6	20.8	19.8	20.6	20.0	20.8	21.0
	4H	19.4	20.3	19.7	20.5	20.7	19.7	20.5	20.0	20.7	20.9
	6H	19.4	20.1	19.7	20.4	20.6	19.6	20.4	19.9	20.6	20.9
	8H	19.3	20.1	19.6	20.3	20.6	19.6	20.3	19.9	20.6	20.8
	12H	19.3	20.0	19.6	20.3	20.6	19.5	20.2	19.9	20.5	20.8
4H	2H	19.5	20.3	19.8	20.5	20.8	19.7	20.5	20.0	20.8	21.0
	3H	19.4	20.1	19.7	20.4	20.7	19.6	20.3	20.0	20.6	20.9
	4H	19.3	20.0	19.7	20.3	20.6	19.6	20.2	19.9	20.5	20.8
	6H	19.3	19.8	19.7	20.2	20.5	19.5	20.1	19.9	20.4	20.7
	8H	19.2	19.8	19.6	20.1	20.5	19.5	20.0	19.9	20.3	20.7
	12H	19.2	19.7	19.6	20.1	20.5	19.4	19.9	19.8	20.3	20.7
8H	4H	19.2	19.7	19.6	20.1	20.5	19.4	20.0	19.8	20.3	20.7
	6H	19.2	19.6	19.6	20.0	20.4	19.4	19.8	19.8	20.2	20.6
	8H	19.1	19.5	19.6	19.9	20.4	19.3	19.7	19.8	20.1	20.6
	12H	19.1	19.4	19.6	19.9	20.4	19.3	19.7	19.8	20.1	20.6
12H	4H	19.2	19.7	19.6	20.0	20.4	19.4	19.9	19.8	20.2	20.6
	6H	19.1	19.5	19.6	19.9	20.4	19.3	19.7	19.8	20.1	20.6
	8H	19.1	19.4	19.6	19.9	20.3	19.3	19.6	19.8	20.1	20.5
Variations with the observer position at spacings(CIE Pub.117):											
S = 1.0H	+ 2.3 / - 4.2					+ 2.7 / - 4.5					
1.5H	+ 3.6 / - 2.9					+ 4.0 / - 3.0					
2.0H	+ 3.3 / - 3.5					+ 3.4 / - 3.6					

CIE Pub.117, 1125 lm Total Lamp Luminous Flux Correct (8log(F/F0) = 0.4)  
 Area: 0.002601 m2

C Range: 0 - 360DEG  
 C Interval: For a lens beam angle of 60°  
 Test Speed: HIGH  
 Temperature: 77.54 °F  
 Operators: zoe  
 Test Date: 2024-8-23

γ Range: 0 - 180DEG  
 γ Interval: 1.0DEG  
 Test System: EVERFINE GO-SPEX500\_V1 SYSTEM V2.00.461  
 Humidity: 65.0%  
 Test Distance: 124.409" [K=1.0000]  
 Remarks: LAMP: BXRH-30G10T0-G-83 Ra:90  
 LENS: PM-1084C 50R  
 NO DRIVER: 500mA  
 30minutes warm-up



## UTILIZATION FACTORS TABLE

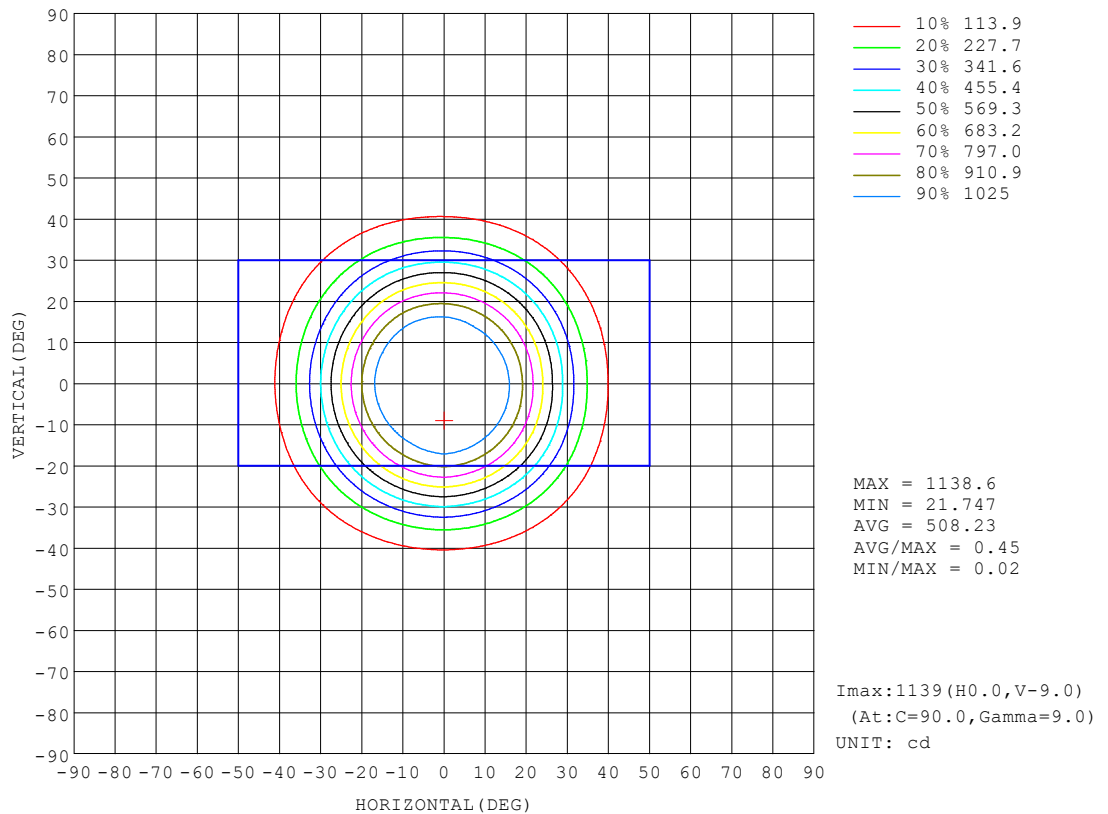
Test:U:17.657V I:0.5000A P:8.8285W PF:1.0000 Freq:49.99Hz Lamp Flux:1124.6x1 lm		
NAME: CTL-MM-1.5-30K-60-SQ-AD-OPL	TYPE:	WEIGHT:
SPEC.: 3000K	DIM.:	SERIAL No.: 2408231155
MFR.: MERCURY LIGHTING	SUR.: 0.002601m2	Shielding Angle:

REFLECTANCE										
Ceiling	0.8	0.8	0.8	0.7	0.7	0.7	0.5	0.5	0.5	0
Walls	0.7	0.5	0.3	0.7	0.5	0.3	0.7	0.5	0.3	0
Working plane	0.2	0.2	0.2	0.2	0.2	0.2	0.2	0.2	0.2	0
ROOM INDEX	UTILIZATION FACTORS (PERCENT) $k(RI) \times RCR = 5$									
$k = 0.60$	72	66	63	72	66	63	71	66	63	60
0.80	79	73	70	78	73	70	77	73	70	66
1.00	83	78	75	82	77	74	81	77	74	70
1.25	86	82	79	85	81	78	84	80	78	74
1.50	89	84	81	88	84	81	86	83	80	76
2.00	91	87	85	90	86	84	87	85	83	78
2.50	92	89	87	91	88	86	88	86	84	79
3.00	94	91	89	92	90	88	89	87	86	80
4.00	96	93	91	94	92	90	91	89	88	82
5.00	97	95	93	95	93	92	92	90	89	83
ROOM INDEX	UF(total)									Direct
According to DIN EN 13032-2 2004			Suspended					SHRNOM = 1.25		

C Range: 0 - 360DEG	$\gamma$ Range: 0 - 180DEG
C Interval: For a lens beam angle of 60°	$\gamma$ Interval: 1.0DEG
Test Speed: HIGH	Test System: EVERFINE GO-SPEX500_V1 SYSTEM V2.00.461
Temperature: 77.54 °F	Humidity: 65.0%
Operators: zoe	Test Distance: 124.409" [K=1.0000]
Test Date: 2024-8-23	Remarks: LAMP: BXRH-30G10T0-G-83 Ra: 90
	LENS: PM-1084C 50R
	NO DRIVER: 500mA
	30minutes warm-up

## ISOCANDELA DIAGRAM

Test:U:17.657V I:0.5000A P:8.8285W PF:1.0000 Freq:49.99Hz Lamp Flux:1124.6x1 lm		
NAME: CTL-MM-1.5-30K-60-SQ-AD-OPL	TYPE:	WEIGHT:
SPEC.: 3000K	DIM.:	SERIAL No.: 2408231155
MFR.: MERCURY LIGHTING	SUR.: 0.002601m2	Shielding Angle:



C Range: 0 - 360DEG

C Interval:For a lens beam angle of 60°

Test Speed: HIGH

Temperature:77.54°F

Operators:zoe

Test Date:2024-8-23

γ Range: 0 - 180DEG

γ Interval: 1.0DEG

Test System:EVERFINE GO-SPEX500\_V1 SYSTEM V2.00.461

Humidity:65.0%

Test Distance:124.409" [K=1.0000]

Remarks: LAMP:BXRH-30G10T0-G-83 Ra:90

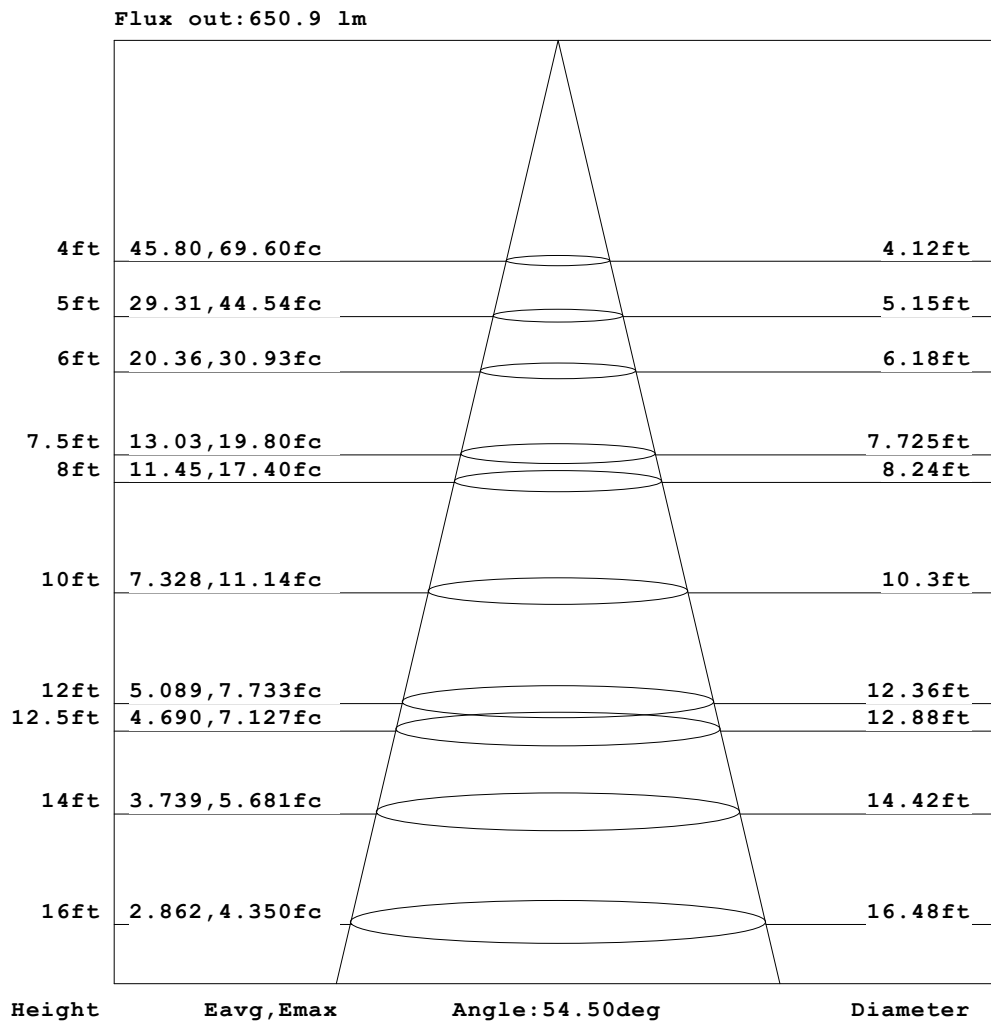
LENS:PM-1084C 50R

NO DRIVER:500mA

30minutes warm-up

**AAI Figure**

Test:U:17.657V I:0.5000A P:8.8285W PF:1.0000 Freq:49.99Hz Lamp Flux:1124.6x1 lm		
NAME: CTL-MM-1.5-30K-60-SQ-AD-OPL	TYPE:	WEIGHT:
SPEC.: 3000K	DIM.:	SERIAL No.: 2408231155
MFR.: MERCURY LIGHTING	SUR.: 0.002601m2	Shielding Angle:



Note: The Curves indicate the illuminated area and the average illumination when the luminaire is at different distance.

C Range: 0 - 360DEG

C Interval: For a lens beam angle of 60°

Test Speed: HIGH

Temperature: 77.54°F

Operators: zoe

Test Date: 2024-8-23

γ Range: 0 - 180DEG

γ Interval: 1.0DEG

Test System: EVERFINE GO-SPEX500\_V1 SYSTEM V2.00.461

Humidity: 65.0%

Test Distance: 124.409" [K=1.0000]

Remarks: LAMP: BXRH-30G10T0-G-83 Ra:90

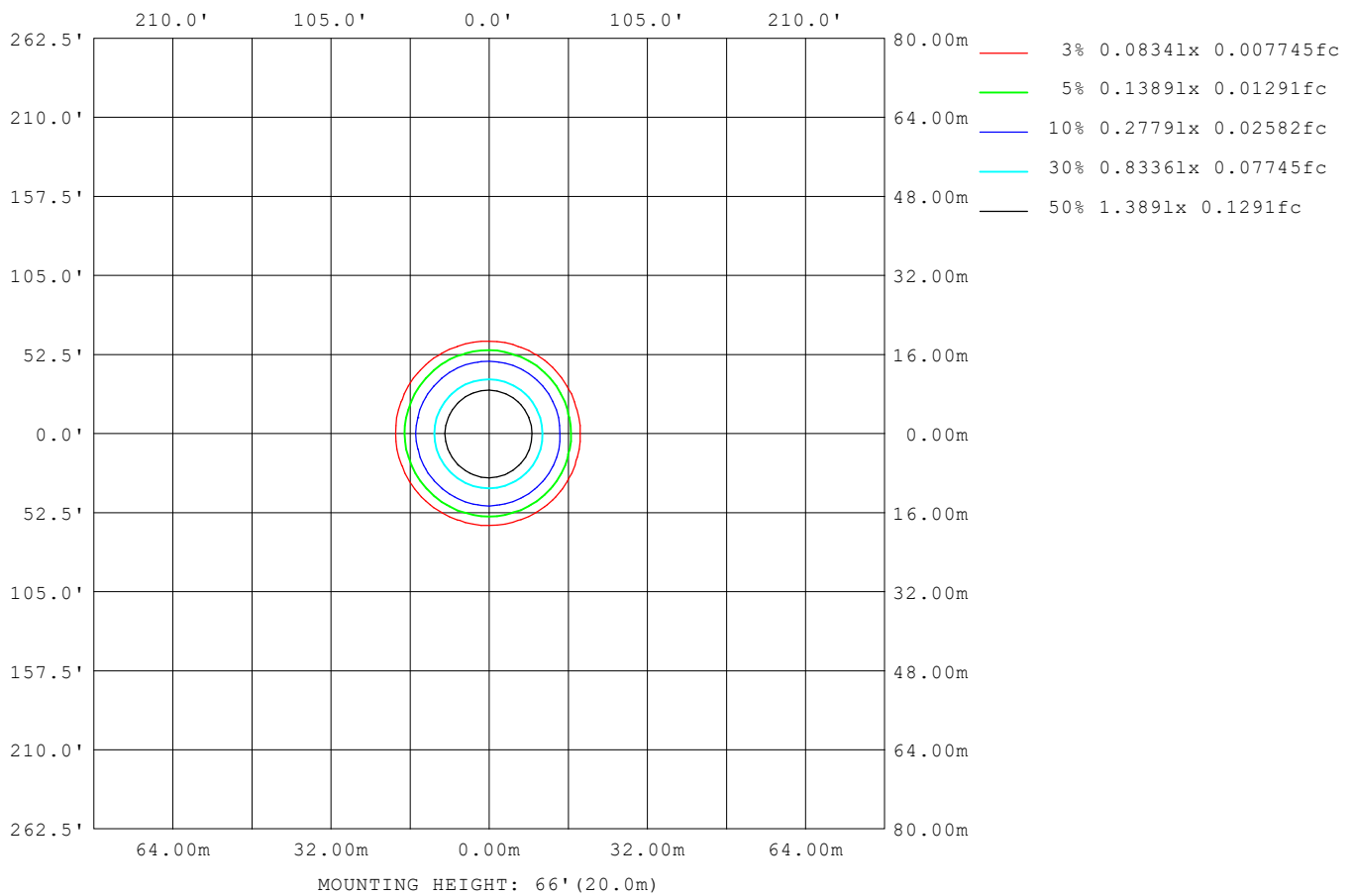
LENS: PM-1084C 50R

NO DRIVER: 500mA

30minutes warm-up

## ISOLUX DIAGRAM

Test:U:17.657V I:0.5000A P:8.8285W PF:1.0000 Freq:49.99Hz Lamp Flux:1124.6x1 lm		
NAME: CTL-MM-1.5-30K-60-SQ-AD-OPL	TYPE:	WEIGHT:
SPEC.: 3000K	DIM.:	SERIAL No.: 2408231155
MFR.: MERCURY LIGHTING	SUR.: 0.002601m2	Shielding Angle:



C Range: 0 - 360DEG	γ Range: 0 - 180DEG
C Interval: For a lens beam angle of 60°	γ Interval: 1.0DEG
Test Speed: HIGH	Test System: EVERFINE GO-SPEX500_V1 SYSTEM V2.00.461
Temperature: 77.54°F	Humidity: 65.0%
Operators: zoe	Test Distance: 124.409" [K=1.0000]
Test Date: 2024-8-23	Remarks: LAMP: BXRH-30G10T0-G-83 Ra: 90
	LENS: PM-1084C 50R
	NO DRIVER: 500mA
	30minutes warm-up

**LED Avg.L Report**

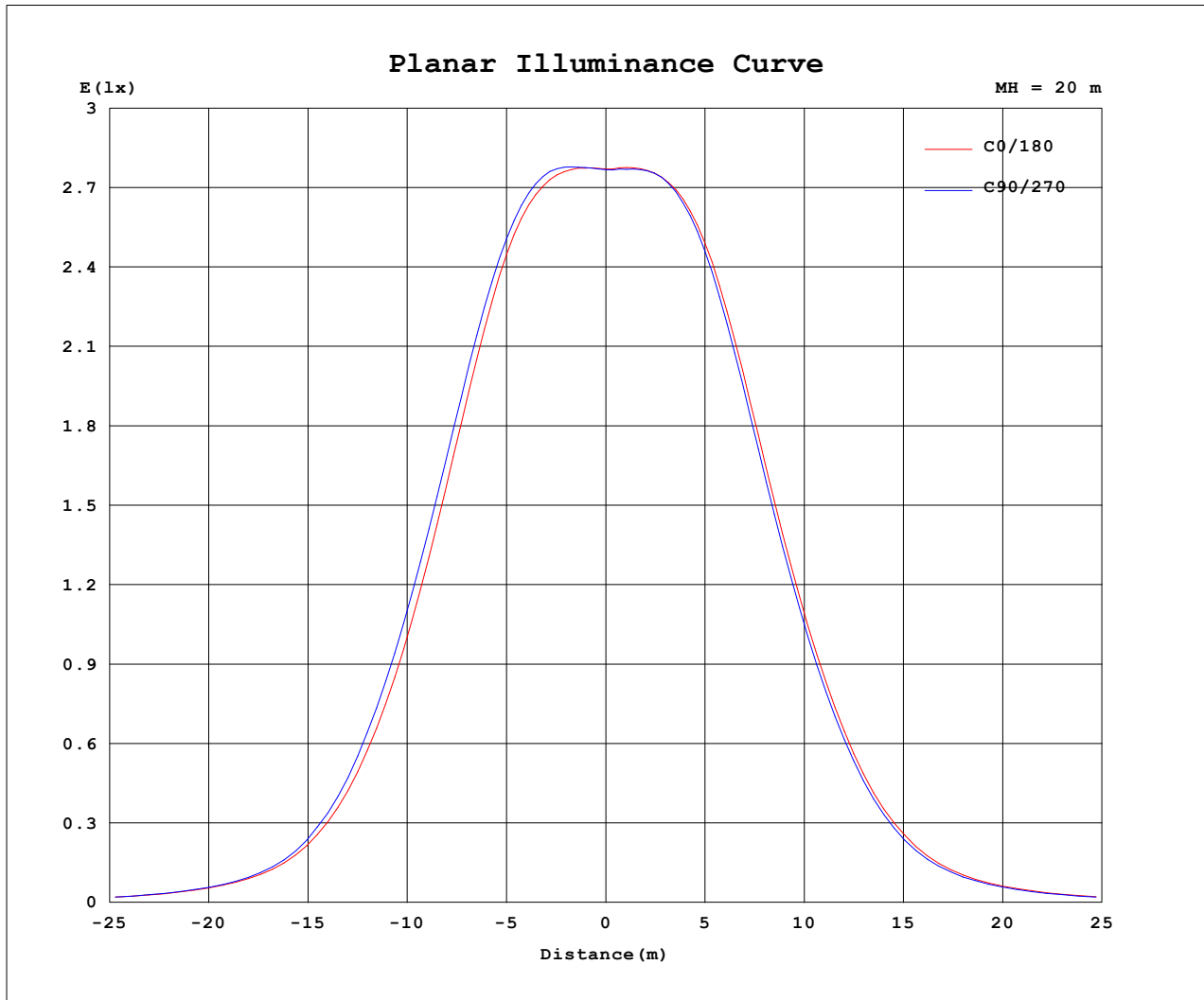
Test:U:17.657V I:0.5000A P:8.8285W PF:1.0000 Freq:49.99Hz Lamp Flux:1124.6x1 lm		
NAME: CTL-MM-1.5-30K-60-SQ-AD-OPL	TYPE:	WEIGHT:
SPEC.: 3000K	DIM.:	SERIAL No.: 2408231155
MFR.: MERCURY LIGHTING	SUR.: 0.002601m2	Shielding Angle:

AvgL	cd/m2
L_0~180 (65) av	5331
L_0~180 (75) av	2533
L_0~180 (85) av	3356
L_90~270 (65) av	5285
L_90~270 (75) av	2503
L_90~270 (85) av	3277
L_45 (65) av	7546
L_45 (75) av	3108
L_45 (85) av	3503

Standard: GB/T 29293-2012

C Range: 0 - 360DEG C Interval: For a lens beam angle of 60° Test Speed: HIGH Temperature: 77.54 °F Operators: zoe Test Date: 2024-8-23	γ Range: 0 - 180DEG γ Interval: 1.0DEG Test System: EVERFINE GO-SPEX500_V1 SYSTEM V2.00.461 Humidity: 65.0% Test Distance: 124.409" [K=1.0000] Remarks: LAMP: BXRH-30G10T0-G-83 Ra: 90 LENS: PM-1084C 50R NO DRIVER: 500mA 30minutes warm-up
--	--

Planar Illuminance Curve



C Range: 0 - 360DEG  
C Interval: For a lens beam angle of 60°  
Test Speed: HIGH  
Temperature: 77.54°F  
Operators: zoe  
Test Date: 2024-8-23

γ Range: 0 - 180DEG  
γ Interval: 1.0DEG  
Test System: EVERFINE GO-SPEX500\_V1 SYSTEM V2.00.461  
Humidity: 65.0%  
Test Distance: 124.409" [K=1.0000]  
Remarks: LAMP: BXRH-30G10T0-G-83 Ra: 90  
LENS: PM-1084C 50R  
NO DRIVER: 500mA  
30minutes warm-up

**LUMINOUS DISTRIBUTION INTENSITY DATA**

Test:U:17.657V I:0.5000A P:8.8285W PF:1.0000 Freq:49.99Hz Lamp Flux:1124.6x1 lm		
NAME: CTL-MM-1.5-30K-60-SQ-AD-OPL	TYPE:	WEIGHT:
SPEC.: 3000K	DIM.:	SERIAL No.: 2408231155
MFR.: MERCURY LIGHTING	SUR.: 0.002601m2	Shielding Angle:

Table--1

UNIT: cd

C (DEG) γ (DEG)	0	30	60	90	120	150	180	210	240	270	300	330						
0	1107	1107	1107	1107	1107	1107	1107	1107	1107	1107	1107	1107						
5	1119	1124	1126	1124	1122	1120	1121	1123	1123	1120	1117	1117						
10	1119	1130	1135	1137	1128	1123	1127	1134	1134	1124	1114	1113						
15	1049	1058	1067	1080	1065	1067	1072	1071	1070	1057	1039	1042						
20	872	889	904	921	908	908	911	903	901	887	873	871						
25	635	660	673	692	686	683	683	675	672	660	651	643						
30	405	427	436	453	449	450	455	446	444	434	425	416						
35	222	236	238	246	245	251	258	253	251	243	237	229						
40	112	118	119	121	122	127	132	131	129	123	120	115						
45	62.9	66.2	67.1	65.5	67.7	70.4	70.8	73.1	71.4	66.2	66.8	64.4						
50	37.0	41.7	42.1	37.9	42.2	43.4	39.9	44.9	43.9	37.8	41.8	40.6						
55	22.5	25.9	25.8	22.8	25.3	25.9	23.5	26.6	26.1	22.8	25.7	25.1						
60	12.6	16.0	16.0	12.5	15.5	15.6	11.8	15.9	15.8	11.9	15.9	15.6						
65	6.22	8.54	8.43	6.05	7.92	7.76	5.51	7.51	7.63	5.57	8.22	8.17						
70	3.31	4.14	4.06	3.23	3.72	3.65	2.81	3.48	3.48	2.85	3.84	3.93						
75	1.89	2.29	2.24	1.81	2.01	1.93	1.52	1.82	1.84	1.56	2.07	2.17						
80	1.12	1.36	1.32	1.03	1.13	1.07	0.85	1.01	1.03	0.90	1.20	1.28						
85	0.89	0.95	0.92	0.82	0.76	0.70	0.63	0.64	0.66	0.66	0.80	0.89						
90	0.00	0.00	0.00	0.00	0.00	0.00	0.00	0.00	0.00	0.00	0.00	0.00						
95	0.00	0.00	0.00	0.00	0.00	0.00	0.00	0.00	0.00	0.00	0.00	0.00						
100	0.00	0.00	0.00	0.00	0.00	0.00	0.00	0.00	0.00	0.00	0.00	0.00						
105	0.00	0.00	0.00	0.00	0.00	0.00	0.00	0.00	0.00	0.00	0.00	0.00						
110	0.00	0.00	0.00	0.00	0.00	0.00	0.00	0.00	0.00	0.00	0.00	0.00						
115	0.00	0.00	0.00	0.00	0.00	0.00	0.00	0.00	0.00	0.00	0.00	0.00						
120	0.00	0.00	0.00	0.00	0.00	0.00	0.00	0.00	0.00	0.00	0.00	0.00						
125	0.00	0.00	0.00	0.00	0.00	0.00	0.00	0.00	0.00	0.00	0.00	0.00						
130	0.00	0.00	0.00	0.00	0.00	0.00	0.00	0.00	0.00	0.00	0.00	0.00						
135	0.00	0.00	0.00	0.00	0.00	0.00	0.00	0.00	0.00	0.00	0.00	0.00						
140	0.00	0.00	0.00	0.00	0.00	0.00	0.00	0.00	0.00	0.00	0.00	0.00						
145	0.00	0.00	0.00	0.00	0.00	0.00	0.00	0.00	0.00	0.00	0.00	0.00						
150	0.00	0.00	0.00	0.00	0.00	0.00	0.00	0.00	0.00	0.00	0.00	0.00						
155	0.00	0.00	0.00	0.00	0.00	0.00	0.00	0.00	0.00	0.00	0.00	0.00						
160	0.00	0.00	0.00	0.00	0.00	0.00	0.00	0.00	0.00	0.00	0.00	0.00						
165	0.00	0.00	0.00	0.00	0.00	0.00	0.00	0.00	0.00	0.00	0.00	0.00						
170	0.00	0.00	0.00	0.00	0.00	0.00	0.00	0.00	0.00	0.00	0.00	0.00						
175	0.00	0.00	0.00	0.00	0.00	0.00	0.00	0.00	0.00	0.00	0.00	0.00						
180	0.00	0.00	0.00	0.00	0.00	0.00	0.00	0.00	0.00	0.00	0.00	0.00						

C Range: 0 - 360DEG

C Interval:For a lens beam angle of 60°

Test Speed: HIGH

Temperature:77.54°F

Operators:zoe

Test Date:2024-8-23

γ Range: 0 - 180DEG

γ Interval: 1.0DEG

Test System:EVERFINE GO-SPEX500\_V1 SYSTEM V2.00.461

Humidity:65.0%

Test Distance:124.409" [K=1.0000]

Remarks: LAMP:BXRH-30G10T0-G-83 Ra:90

LENS:PM-1084C 50R

NO DRIVER:500mA

30minutes warm-up