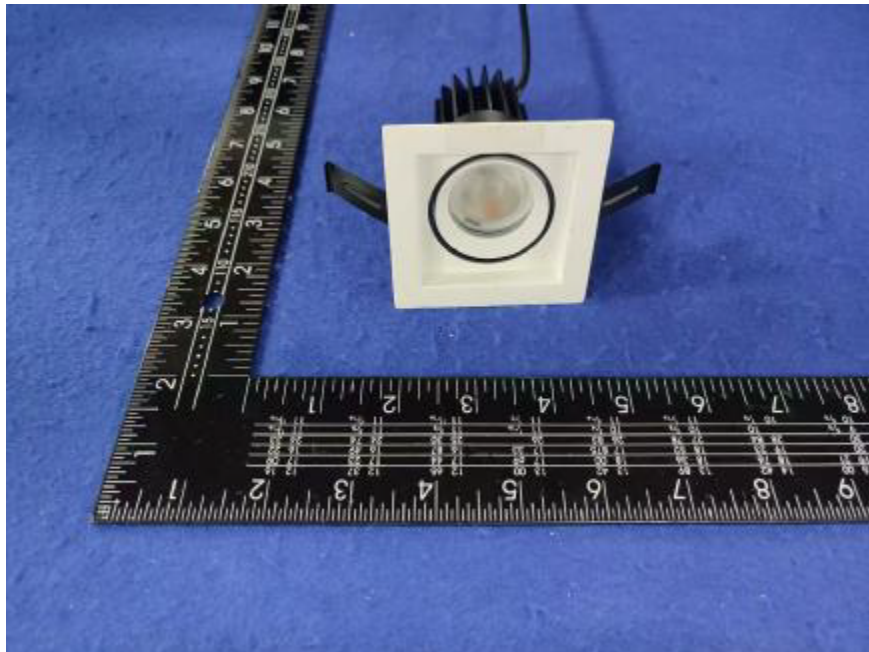


Photometric Report for each Light Engine
used in double and triple configuration
for Flanged and Flangeless Trim



Light Output Ratio:	87.4%	
Luminaire Power:	8.83 W	
SHR Nominal:	0.50	Calculated using the TM5
SHR Maximum:	0.65	fine grid method.

C Range: 0 - 360DEG
C Interval: For a lens beam angle of 36°
Test Speed: HIGH
Temperature: 77.54°F
Operators: zoe
Test Date: 2024-8-23

γ Range: 0 - 180DEG
γ Interval: 1.0DEG
Test System: EVERFINE GO-SPEX500_V1 SYSTEM V2.00.461
Humidity: 65.0%
Test Distance: 124.409" [K=1.0000]
Remarks: LAMP: BXRH-30G10T0-G-83 Ra:90
LENS: PM-1084B 36R
NO DRIVER: 500mA
30minutes warm-up

LUMINOUS INTENSITY DISTRIBUTION DIAGRAM

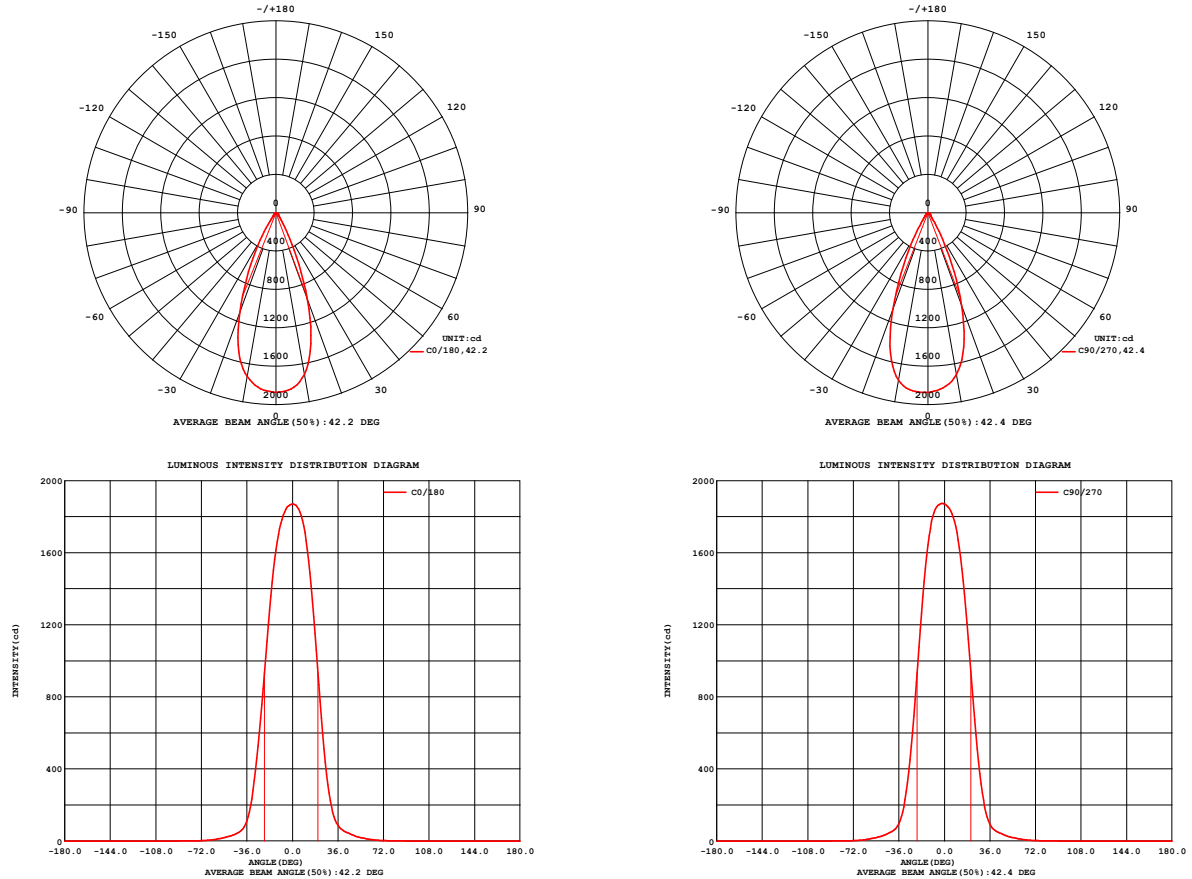


Fig. C0/C180

Fig. C90/C270

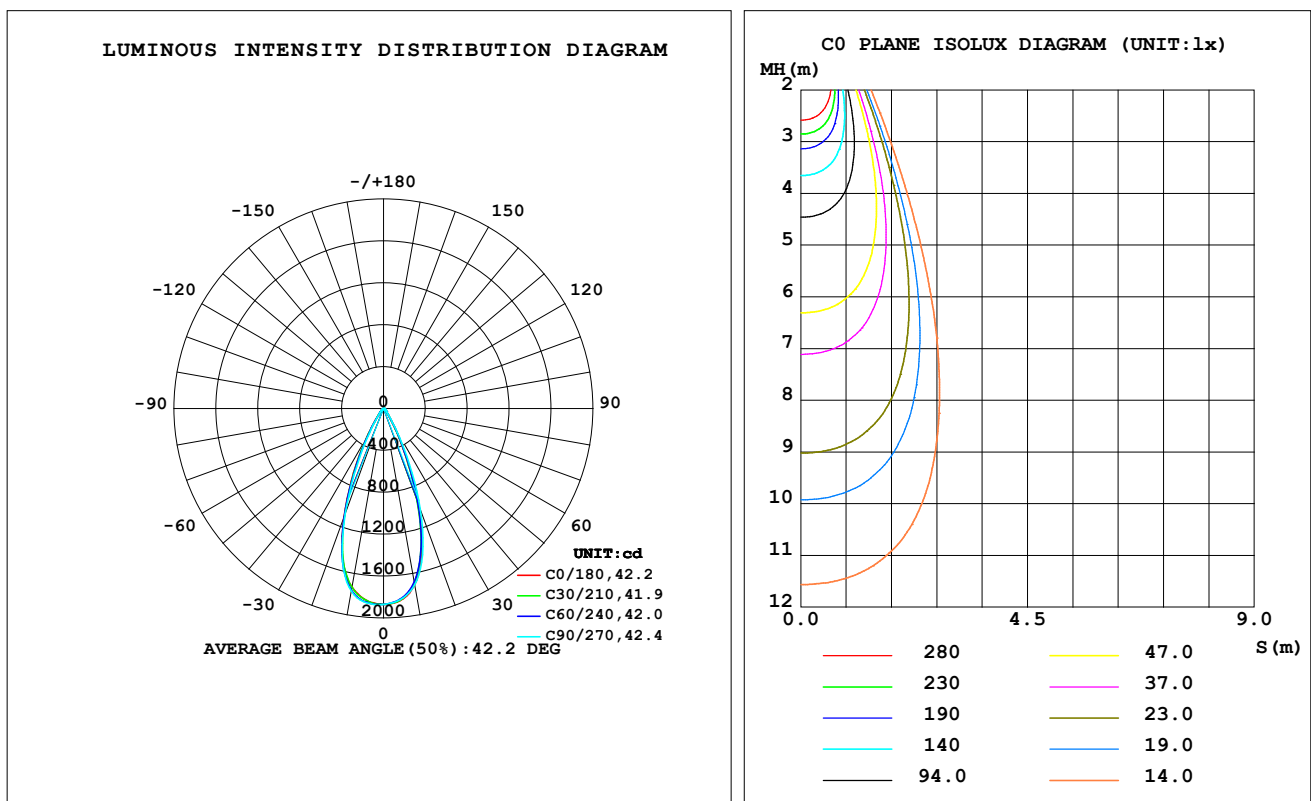
C Range: 0 - 360DEG
C Interval: For a lens beam angle of 36°
Test Speed: HIGH
Temperature: 77.54 °F
Operators: zoe
Test Date: 2024-8-23

γ Range: 0 - 180DEG
γ Interval: 1.0DEG
Test System: EVERFINE GO-SPEX500_V1 SYSTEM V2.00.461
Humidity: 65.0%
Test Distance: 124.409" [K=1.0000]
Remarks: LAMP: BXRH-30G10T0-G-83 Ra: 90
LENS: PM-1084B 36R
NO DRIVER: 500mA
30minutes warm-up

LUMINAIRE PHOTOMETRIC TEST REPORT

Test:U:17.659V I:0.5000A P:8.8295W PF:1.0000 Freq:49.99Hz Lamp Flux:1124.6x1 lm		
NAME: CTL-MM-1.5-30K-36-SQ-AD-OPL	TYPE:	WEIGHT:
SPEC.: 3000K	DIM.:	SERIAL No.: 2408231154
MFR.: MERCURY LIGHTING	SUR.: 0.002601m2	Shielding Angle:

DATA OF LAMP		PHOTOMETRIC DATA Eff: 111.34 lm/W			
MODEL	Brideglux	I _{max} (cd)	1873	S/MH (C0/180)	0.68
NOMINAL POWER (W)	9	LOR (%)	87.4	S/MH (C90/270)	0.65
RATED VOLTAGE (V)	18	TOTAL FLUX (lm)	983.04	η UP, DN (C0-180)	0.0, 42.7
NOMINAL FLUX (lm)	1124.6	CIE CLASS	DIRECT	η UP, DN (C180-360)	0.0, 44.7
LAMPS INSIDE	1	η up (%)	0.0	CIBSE SHR NOM	0.50
TEST VOLTAGE (V)	18	η down (%)	87.4	CIBSE SHR MAX	0.65



C Range: 0 - 360DEG

C Interval: For a lens beam angle of 36°

Test Speed: HIGH

Temperature: 77.54 °F

Operators: zoe

Test Date: 2024-8-23

γ Range: 0 - 180DEG

γ Interval: 1.0DEG

Test System: EVERFINE GO-SPEX500_V1 SYSTEM V2.00.461

Humidity: 65.0%

Test Distance: 124.409" [K=1.0000]

Remarks: LAMP: BXRH-30G10T0-G-83 Ra: 90

LENS: PM-1084B 36R

NO DRIVER: 500mA

30minutes warm-up

ZONAL FLUX DIAGRAM

ZONAL FLUX DIAGRAM:

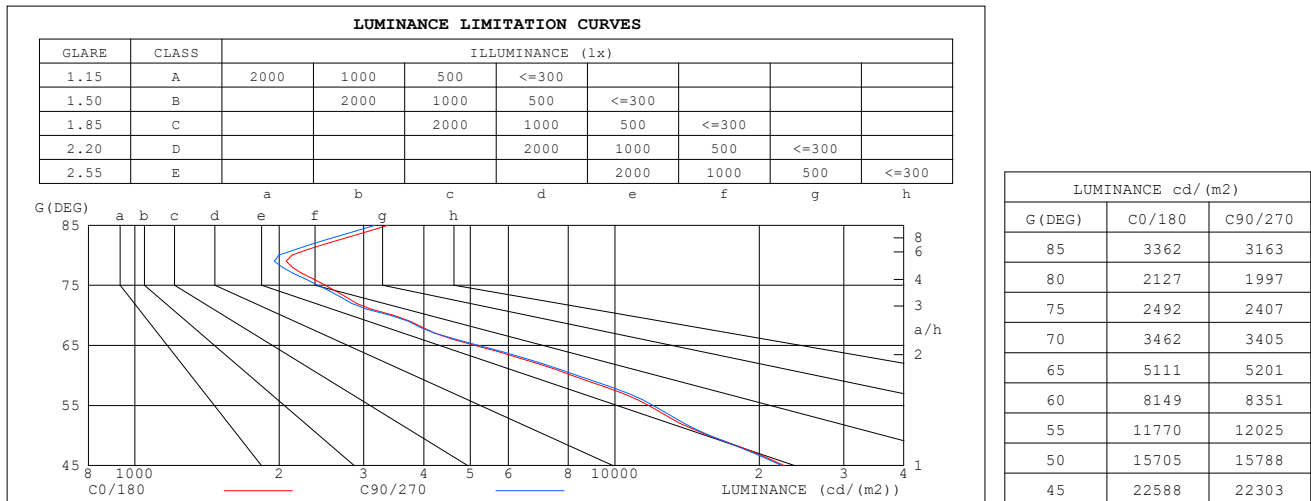
γ	C0	C45	C90	C135	C180	C225	C270	C315	γ	Φ zone	Φ total	%lum,lamp
10	1711	1687	1711	1719	1733	1749	1773	1750	0- 10	172.4	172.4	17.5,15.3
20	961.7	953.7	1031	1086	1107	1099	1075	1022	10- 20	396.0	568.4	57.8,50.5
30	223.2	233.9	266.9	306.6	334.2	317.6	272.8	239.3	20- 30	274.7	843.1	85.8,75
40	58.95	60.21	58.64	60.20	60.82	62.16	58.79	58.44	30- 40	80.59	923.7	94,82.1
50	26.23	30.13	26.40	30.49	25.12	29.62	25.34	30.39	40- 50	32.65	956.4	97.3,85
60	10.59	13.07	10.86	13.04	9.881	12.41	10.07	12.93	50- 60	17.23	973.6	99,86.6
70	3.077	3.818	3.029	3.430	2.545	3.135	2.623	3.631	60- 70	6.844	980.5	99.7,87.2
80	0.9599	1.153	0.9021	0.9529	0.7378	0.8746	0.7850	1.078	70- 80	1.942	982.4	99.9,87.4
90	0	0	0	0	0	0	0	0	80- 90	0.6376	983.0	100,87.4
100	0	0	0	0	0	0	0	0	90-100	0	983.0	100,87.4
110	0	0	0	0	0	0	0	0	100-110	0	983.0	100,87.4
120	0	0	0	0	0	0	0	0	110-120	0	983.0	100,87.4
130	0	0	0	0	0	0	0	0	120-130	0	983.0	100,87.4
140	0	0	0	0	0	0	0	0	130-140	0	983.0	100,87.4
150	0	0	0	0	0	0	0	0	140-150	0	983.0	100,87.4
160	0	0	0	0	0	0	0	0	150-160	0	983.0	100,87.4
170	0	0	0	0	0	0	0	0	160-170	0	983.0	100,87.4
180	0	0	0	0	0	0	0	0	170-180	0	983.0	100,87.4
DEG	LUMINOUS INTENSITY:cd									UNIT:lm		

C Range: 0 - 360DEG
 C Interval:For a lens beam angle of 36°
 Test Speed: HIGH
 Temperature:77.54°F
 Operators:zoe
 Test Date:2024-8-23

γ Range: 0 - 180DEG
 γ Interval: 1.0DEG
 Test System:EVERFINE GO-SPEX500_V1 SYSTEM V2.00.461
 Humidity:65.0%
 Test Distance:124.409" [K=1.0000]
 Remarks: LAMP:BXRH-30G10T0-G-83 Ra:90
 LENS:PM-1084B 36R
 NO DRIVER:500mA
 30minutes warm-up

LUMINANCE LIMITATION CURVES

Test: U:17.659V I:0.5000A P:8.8295W PF:1.0000 Freq:49.99Hz Lamp Flux: 1124.6x1 lm		
NAME: CTL-MM-1.5-30K-36-SQ-AD-OPL	TYPE:	WEIGHT:
SPEC.: 3000K	DIM.:	SERIAL No.: 2408231154
MFR.: MERCURY LIGHTING	SUR.: 0.002601m2	Shielding Angle:



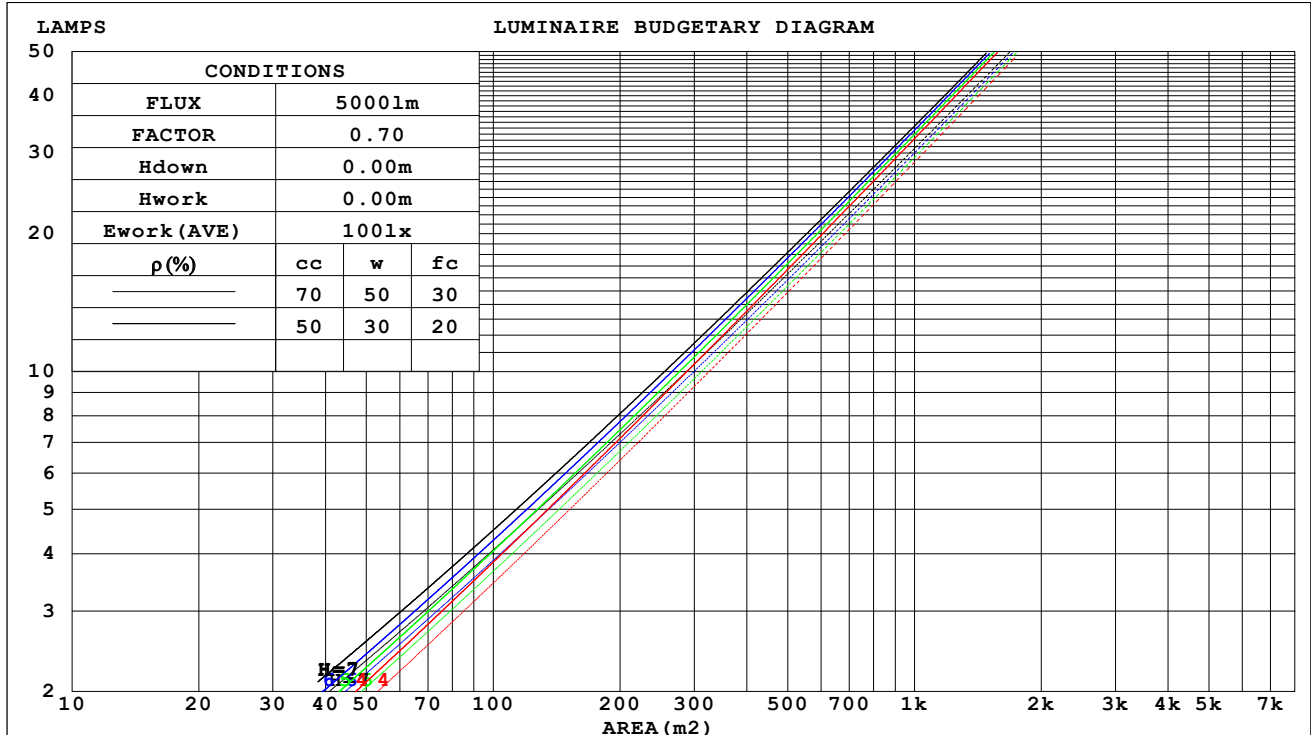
C Range: 0 - 360DEG
C Interval: For a lens beam angle of 36°
Test Speed: HIGH
Temperature: 77.54°F
Operators: zoe
Test Date: 2024-8-23

γ Range: 0 - 180DEG
γ Interval: 1.0DEG
Test System: EVERFINE GO-SPEX500_V1 SYSTEM V2.00.461
Humidity: 65.0%
Test Distance: 124.409" [K=1.0000]
Remarks: LAMP: BXRH-30G10T0-G-83 Ra:90
 LENS: PM-1084B 36R
 NO DRIVER: 500mA
 30minutes warm-up

CU AND LUMINAIRE BUDGETARY ESTIMATE DIAGRAM

Test:U:17.659V I:0.5000A P:8.8295W PF:1.0000 Freq:49.99Hz Lamp Flux:1124.6x1 lm		
NAME: CTL-MM-1.5-30K-36-SQ-AD-OPL	TYPE:	WEIGHT:
SPEC.: 3000K	DIM.:	SERIAL No.: 2408231154
MFR.: MERCURY LIGHTING	SUR.: 0.002601m2	Shielding Angle:

pcc	80%			70%			50%			30%			10%			0
pw	50%	30%	10%	50%	30%	10%	50%	30%	10%	50%	30%	10%	50%	30%	10%	0
pfc	20%			20%			20%			20%			20%			0
RCR	RCR:Room Cavity Ratio															



C Range: 0 - 360DEG

C Interval:For a lens beam angle of 36°

Test Speed: HIGH

Temperature:77.54°F

Operators:zoe

Test Date:2024-8-23

γ Range: 0 - 180DEG

γ Interval: 1.0DEG

Test System:EVERFINE GO-SPEX500_V1 SYSTEM V2.00.461

Humidity:65.0%

Test Distance:124.409" [K=1.0000]

Remarks: LAMP:BXRH-30G10T0-G-83 Ra:90

LENS:PM-1084B 36R

NO DRIVER:500mA

30minutes warm-up

WEC AND CCEC

Test:U:17.659V I:0.5000A P:8.8295W PF:1.0000 Freq:49.99Hz Lamp Flux:1124.6x1 lm		
NAME: CTL-MM-1.5-30K-36-SQ-AD-OPL	TYPE:	WEIGHT:
SPEC.: 3000K	DIM.:	SERIAL No.: 2408231154
MFR.: MERCURY LIGHTING	SUR.: 0.002601m2	Shielding Angle:

pcc	80%			70%			50%			30%			10%			0
pw	50%	30%	10%	50%	30%	10%	50%	30%	10%	50%	30%	10%	50%	30%	10%	0
pfc	20%			20%			20%			20%			20%			0
RCR	RCR:Room Cavity Ratio						Wall Exitance Coefficients(WEC)									
0.0																
1.0	.142	.081	.026	.137	.078	.025	.126	.072	.023	.116	.067	.021	.106	.062	.020	
2.0	.135	.074	.023	.130	.071	.022	.121	.067	.021	.112	.063	.020	.104	.059	.019	
3.0	.127	.068	.020	.123	.066	.020	.115	.062	.019	.108	.059	.018	.101	.056	.017	
4.0	.120	.062	.018	.117	.061	.018	.110	.058	.017	.104	.056	.017	.098	.053	.016	
5.0	.114	.058	.017	.111	.057	.017	.105	.055	.016	.100	.053	.016	.095	.051	.015	
6.0	.108	.054	.016	.106	.053	.015	.101	.052	.015	.096	.050	.015	.092	.048	.014	
7.0	.103	.051	.014	.101	.050	.014	.097	.049	.014	.093	.047	.014	.089	.046	.014	
8.0	.099	.048	.014	.097	.048	.013	.093	.046	.013	.089	.045	.013	.086	.044	.013	
9.0	.095	.046	.013	.093	.045	.013	.089	.044	.013	.086	.043	.012	.083	.042	.012	
10.0	.091	.044	.012	.089	.043	.012	.086	.042	.012	.083	.041	.012	.080	.040	.012	

pcc	80%			70%			50%			30%			10%			0
pw	50%	30%	10%	50%	30%	10%	50%	30%	10%	50%	30%	10%	50%	30%	10%	0
pfc	20%			20%			20%			20%			20%			0
RCR	RCR:Room Cavity Ratio						Ceiling Cavity Exitance Coefficients(CCEC)									
0.0	.166	.166	.166	.142	.142	.142	.097	.097	.097	.056	.056	.056	.018	.018	.018	
1.0	.149	.138	.128	.127	.118	.110	.087	.081	.076	.050	.047	.044	.016	.015	.014	
2.0	.134	.116	.100	.115	.100	.087	.079	.069	.060	.046	.040	.035	.015	.013	.012	
3.0	.123	.099	.080	.105	.086	.070	.072	.059	.049	.042	.035	.029	.013	.011	.009	
4.0	.113	.086	.066	.097	.074	.057	.067	.052	.040	.039	.030	.024	.012	.010	.008	
5.0	.105	.076	.054	.090	.066	.047	.062	.046	.033	.036	.027	.020	.012	.009	.007	
6.0	.098	.067	.045	.084	.058	.040	.058	.041	.028	.034	.024	.017	.011	.008	.006	
7.0	.092	.061	.039	.079	.052	.034	.055	.037	.024	.032	.022	.014	.010	.007	.005	
8.0	.087	.055	.033	.074	.048	.029	.052	.033	.021	.030	.020	.012	.010	.006	.004	
9.0	.082	.050	.029	.071	.044	.025	.049	.031	.018	.028	.018	.011	.009	.006	.004	
10.0	.078	.046	.025	.067	.040	.022	.047	.028	.016	.027	.017	.009	.009	.005	.003	

C Range: 0 - 360DEG
 C Interval:For a lens beam angle of 36°
 Test Speed: HIGH
 Temperature:77.54°F
 Operators:zoe
 Test Date:2024-8-23

γ Range: 0 - 180DEG
 γ Interval: 1.0DEG
 Test System:EVERFINE GO-SPEX500_V1 SYSTEM V2.00.461
 Humidity:65.0%
 Test Distance:124.409" [K=1.0000]
 Remarks: LAMP:BXRH-30G10T0-G-83 Ra:90
 LENS:PM-1084B 36R
 NO DRIVER:500mA
 30minutes warm-up

UGR(Unified Glare Rating) Table

Test:U:17.659V I:0.5000A P:8.8295W PF:1.0000 Freq:49.99Hz Lamp Flux:1124.6x1 lm											
NAME: CTL-MM-1.5-30K-36-SQ-AD-OPL						TYPE:		WEIGHT:			
SPEC.: 3000K						DIM.:		SERIAL No.: 2408231154			
MFR.: MERCURY LIGHTING						SUR.: 0.002601m2		Shielding Angle:			
ceiling/cavity	0.7	0.7	0.5	0.5	0.3	0.7	0.7	0.5	0.5	0.3	
walls	0.5	0.3	0.5	0.3	0.3	0.5	0.3	0.5	0.3	0.3	
working plane	0.2	0.2	0.2	0.2	0.2	0.2	0.2	0.2	0.2	0.2	
Room dimensions		Viewed crosswise					Viewed endwise				
x = 2H y = 2H	2H	15.6	16.5	15.9	16.6	16.8	15.9	16.7	16.1	16.9	17.0
	3H	15.7	16.4	15.9	16.6	16.8	15.9	16.7	16.1	16.9	17.1
	4H	15.6	16.4	15.9	16.6	16.8	15.9	16.6	16.1	16.8	17.0
	6H	15.6	16.3	15.9	16.5	16.7	15.8	16.5	16.1	16.7	17.0
	8H	15.5	16.2	15.8	16.5	16.7	15.8	16.4	16.1	16.7	16.9
	12H	15.5	16.2	15.8	16.4	16.7	15.7	16.4	16.1	16.6	16.9
4H	2H	15.7	16.4	15.9	16.6	16.8	15.9	16.6	16.2	16.8	17.1
	3H	15.7	16.4	16.0	16.6	16.9	15.9	16.6	16.3	16.8	17.1
	4H	15.7	16.3	16.1	16.6	16.9	15.9	16.5	16.3	16.8	17.1
	6H	15.7	16.2	16.0	16.5	16.9	15.9	16.4	16.2	16.7	17.1
	8H	15.7	16.1	16.0	16.5	16.8	15.8	16.3	16.2	16.7	17.0
	12H	15.6	16.1	16.0	16.4	16.8	15.8	16.3	16.2	16.6	17.0
8H	4H	15.6	16.1	16.0	16.4	16.8	15.8	16.3	16.2	16.6	17.0
	6H	15.6	16.0	16.0	16.4	16.8	15.8	16.2	16.2	16.6	17.0
	8H	15.6	15.9	16.0	16.4	16.8	15.8	16.1	16.2	16.5	17.0
	12H	15.6	15.9	16.1	16.3	16.8	15.8	16.1	16.3	16.5	17.0
12H	4H	15.6	16.0	16.0	16.4	16.8	15.8	16.2	16.2	16.6	17.0
	6H	15.6	15.9	16.0	16.3	16.8	15.7	16.1	16.2	16.5	16.9
	8H	15.6	15.9	16.0	16.3	16.8	15.7	16.0	16.2	16.5	17.0
Variations with the observer position at spacings(CIE Pub.117) :											
S = 1.0H	+ 1.4 / - 2.2					+ 1.5 / - 2.2					
1.5H	+ 1.8 / - 1.6					+ 2.1 / - 1.5					
2.0H	+ 2.5 / - 2.6					+ 2.5 / - 2.5					

CIE Pub.117, 1125 lm Total Lamp Luminous Flux Correct (8log(F/F0) = 0.4)
 Area: 0.002601 m2

C Range: 0 - 360DEG

C Interval:For a lens beam angle of 36°

Test Speed: HIGH

Temperature:77.54°F

Operators:zoe

Test Date:2024-8-23

γ Range: 0 - 180DEG

γ Interval: 1.0DEG

Test System:EVERFINE GO-SPEX500_V1 SYSTEM V2.00.461

Humidity:65.0%

Test Distance:124.409" [K=1.0000]

Remarks: LAMP:BXRH-30G10T0-G-83 Ra:90

LENS:PM-1084B 36R

NO DRIVER:500mA

30minutes warm-up

UTILIZATION FACTORS TABLE

Test:U:17.659V I:0.5000A P:8.8295W PF:1.0000 Freq:49.99Hz Lamp Flux:1124.6x1 lm		
NAME: CTL-MM-1.5-30K-36-SQ-AD-OPL	TYPE:	WEIGHT:
SPEC.: 3000K	DIM.:	SERIAL No.: 2408231154
MFR.: MERCURY LIGHTING	SUR.: 0.002601m2	Shielding Angle:

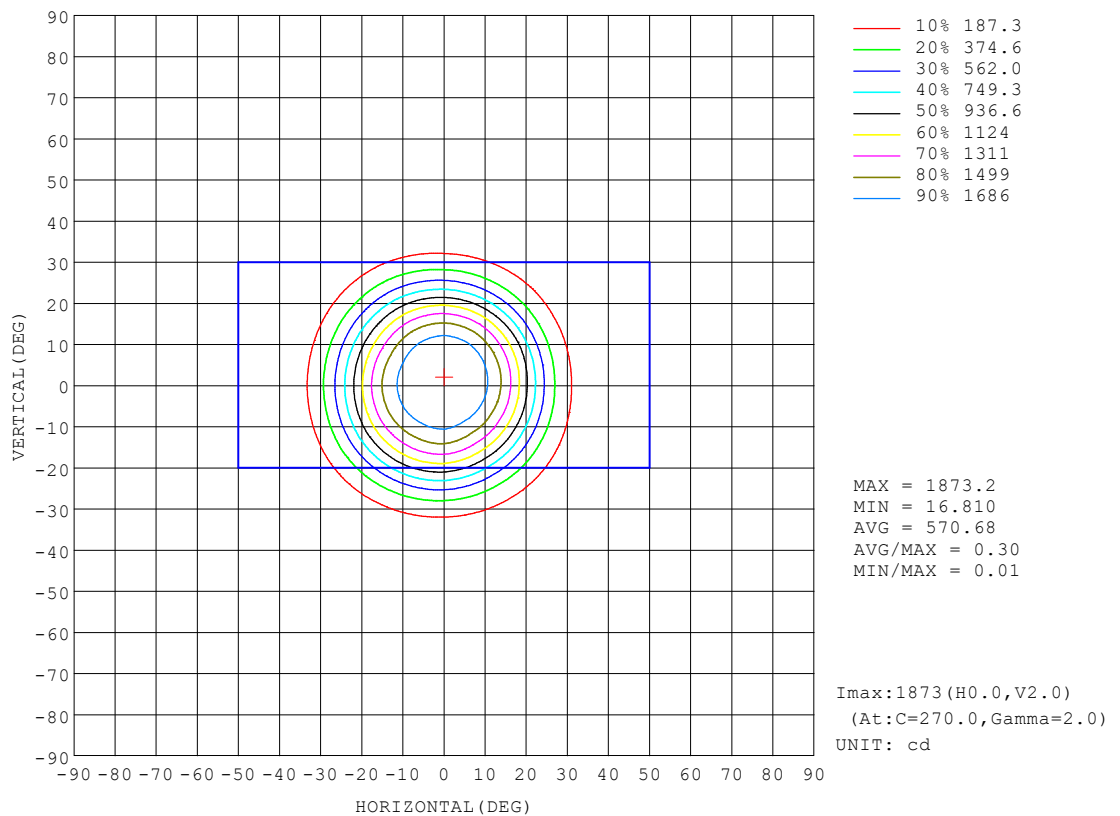
REFLECTANCE										
Ceiling	0.8	0.8	0.8	0.7	0.7	0.7	0.5	0.5	0.5	0
Walls	0.7	0.5	0.3	0.7	0.5	0.3	0.7	0.5	0.3	0
Working plane	0.2	0.2	0.2	0.2	0.2	0.2	0.2	0.2	0.2	0
ROOM INDEX	UTILIZATION FACTORS (PERCENT) $k(RI) \times RCR = 5$									
$k = 0.60$	77	71	68	76	71	68	76	71	68	65
0.80	83	78	75	83	78	75	82	77	74	71
1.00	87	82	79	86	82	79	85	82	78	75
1.25	90	86	83	89	85	83	88	84	82	78
1.50	93	89	86	92	88	85	90	87	84	81
2.00	95	91	89	94	91	88	91	89	87	82
2.50	96	93	91	95	92	90	92	90	88	83
3.00	98	95	93	96	94	92	93	91	90	84
4.00	100	97	95	98	96	94	95	93	92	86
5.00	101	99	97	99	97	96	95	94	93	86
ROOM INDEX	UF(total)									Direct
According to DIN EN 13032-2 2004			Suspended					SHRNOM = 1.25		

C Range: 0 - 360DEG
 C Interval: For a lens beam angle of 36°
 Test Speed: HIGH
 Temperature: 77.54 °F
 Operators: zoe
 Test Date: 2024-8-23

γ Range: 0 - 180DEG
 γ Interval: 1.0DEG
 Test System: EVERFINE GO-SPEX500_V1 SYSTEM V2.00.461
 Humidity: 65.0%
 Test Distance: 124.409" [K=1.0000]
 Remarks: LAMP: BXRH-30G10T0-G-83 Ra:90
 LENS: PM-1084B 36R
 NO DRIVER: 500mA
 30minutes warm-up

ISOCANDELA DIAGRAM

Test:U:17.659V I:0.5000A P:8.8295W PF:1.0000 Freq:49.99Hz Lamp Flux:1124.6x1 lm		
NAME: CTL-MM-1.5-30K-36-SQ-AD-OPL	TYPE:	WEIGHT:
SPEC.: 3000K	DIM.:	SERIAL No.: 2408231154
MFR.: MERCURY LIGHTING	SUR.: 0.002601m2	Shielding Angle:



C Range: 0 - 360DEG

C Interval: For a lens beam angle of 36°

Test Speed: HIGH

Temperature: 77.54°F

Operators: zoe

Test Date: 2024-8-23

γ Range: 0 - 180DEG

γ Interval: 1.0DEG

Test System: EVERFINE GO-SPEX500_V1 SYSTEM V2.00.461

Humidity: 65.0%

Test Distance: 124.409" [K=1.0000]

Remarks: LAMP: BXRH-30G10T0-G-83 Ra: 90

LENS: PM-1084B 36R

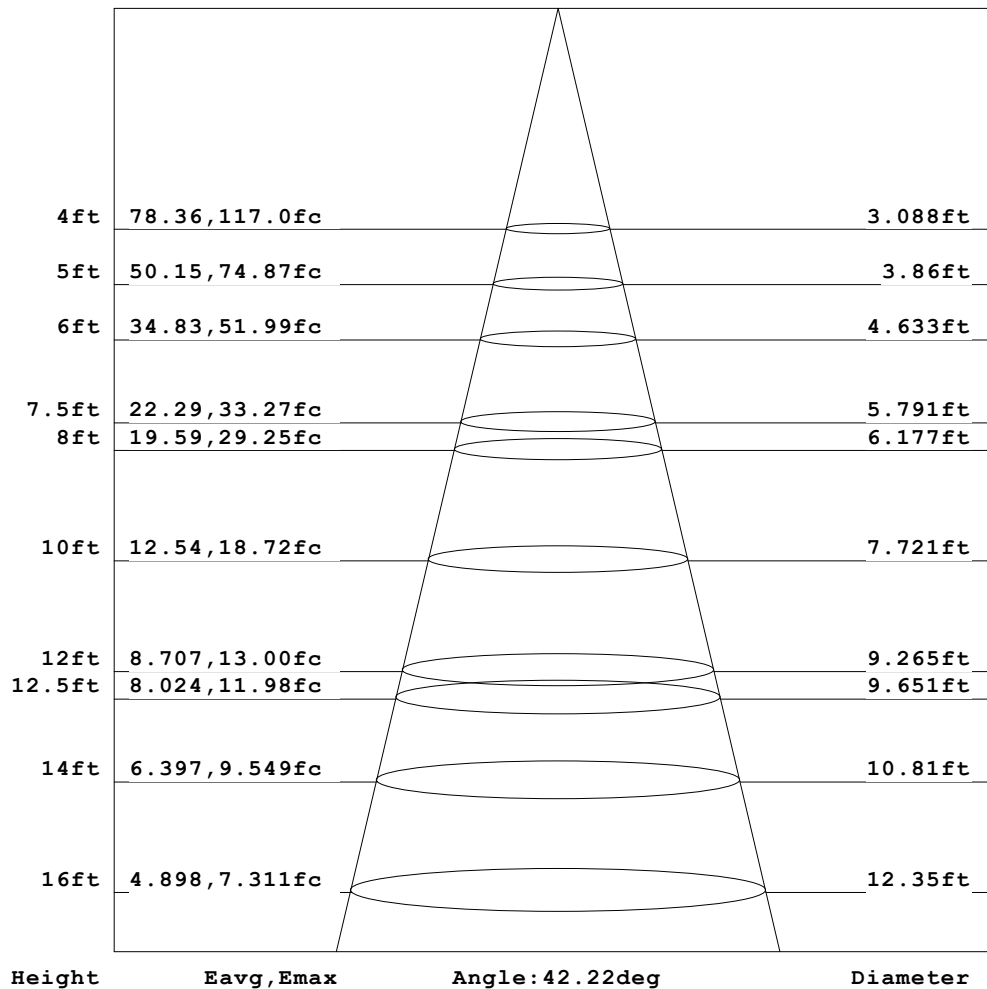
NO DRIVER: 500mA

30minutes warm-up

AAI Figure

Test:U:17.659V I:0.5000A P:8.8295W PF:1.0000 Freq:49.99Hz Lamp Flux:1124.6x1 lm		
NAME: CTL-MM-1.5-30K-36-SQ-AD-OPL	TYPE:	WEIGHT:
SPEC.: 3000K	DIM.:	SERIAL No.: 2408231154
MFR.: MERCURY LIGHTING	SUR.: 0.002601m2	Shielding Angle:

Flux out:643.0 lm



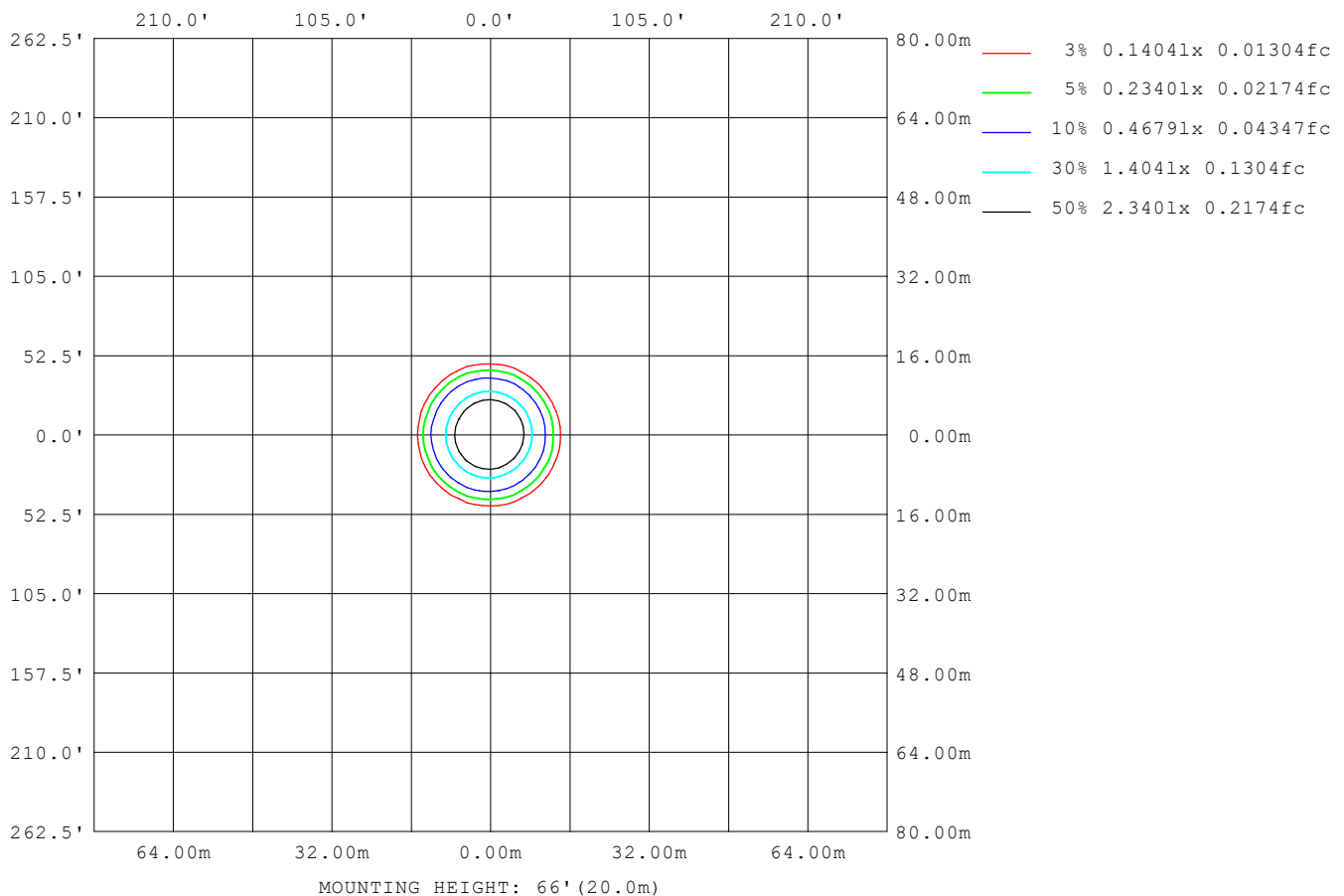
Note: The Curves indicate the illuminated area and the average illumination when the luminaire is at different distance.

C Range: 0 - 360DEG
 C Interval: For a lens beam angle of 36°
 Test Speed: HIGH
 Temperature: 77.54°F
 Operators: zoe
 Test Date: 2024-8-23

γ Range: 0 - 180DEG
 γ Interval: 1.0DEG
 Test System: EVERFINE GO-SPEX500_V1 SYSTEM V2.00.461
 Humidity: 65.0%
 Test Distance: 124.409" [K=1.0000]
 Remarks: LAMP: BXRH-30G10T0-G-83 Ra:90
 LENS: PM-1084B 36R
 NO DRIVER: 500mA
 30minutes warm-up

ISOLUX DIAGRAM

Test: U:17.659V I:0.5000A P:8.8295W PF:1.0000 Freq:49.99Hz Lamp Flux: 1124.6x1 lm		
NAME: CTL-MM-1.5-30K-36-SQ-AD-OPL	TYPE:	WEIGHT:
SPEC.: 3000K	DIM.:	SERIAL No.: 2408231154
MFR.: MERCURY LIGHTING	SUR.: 0.002601m2	Shielding Angle:



C Range: 0 - 360DEG
C Interval: For a lens beam angle of 36°
Test Speed: HIGH
Temperature: 77.54°F
Operators: zoe
Test Date: 2024-8-23

γ Range: 0 - 180DEG
γ Interval: 1.0DEG
Test System: EVERFINE GO-SPEX500_V1 SYSTEM V2.00.461
Humidity: 65.0%
Test Distance: 124.409" [K=1.0000]
Remarks: LAMP: BXRH-30G10T0-G-83 Ra:90
 LENS: PM-1084B 36R
 NO DRIVER: 500mA
 30minutes warm-up

LED Avg.L Report

Test:U:17.659V I:0.5000A P:8.8295W PF:1.0000 Freq:49.99Hz Lamp Flux:1124.6x1 lm		
NAME: CTL-MM-1.5-30K-36-SQ-AD-OPL	TYPE:	WEIGHT:
SPEC.: 3000K	DIM.:	SERIAL No.: 2408231154
MFR.: MERCURY LIGHTING	SUR.: 0.002601m2	Shielding Angle:

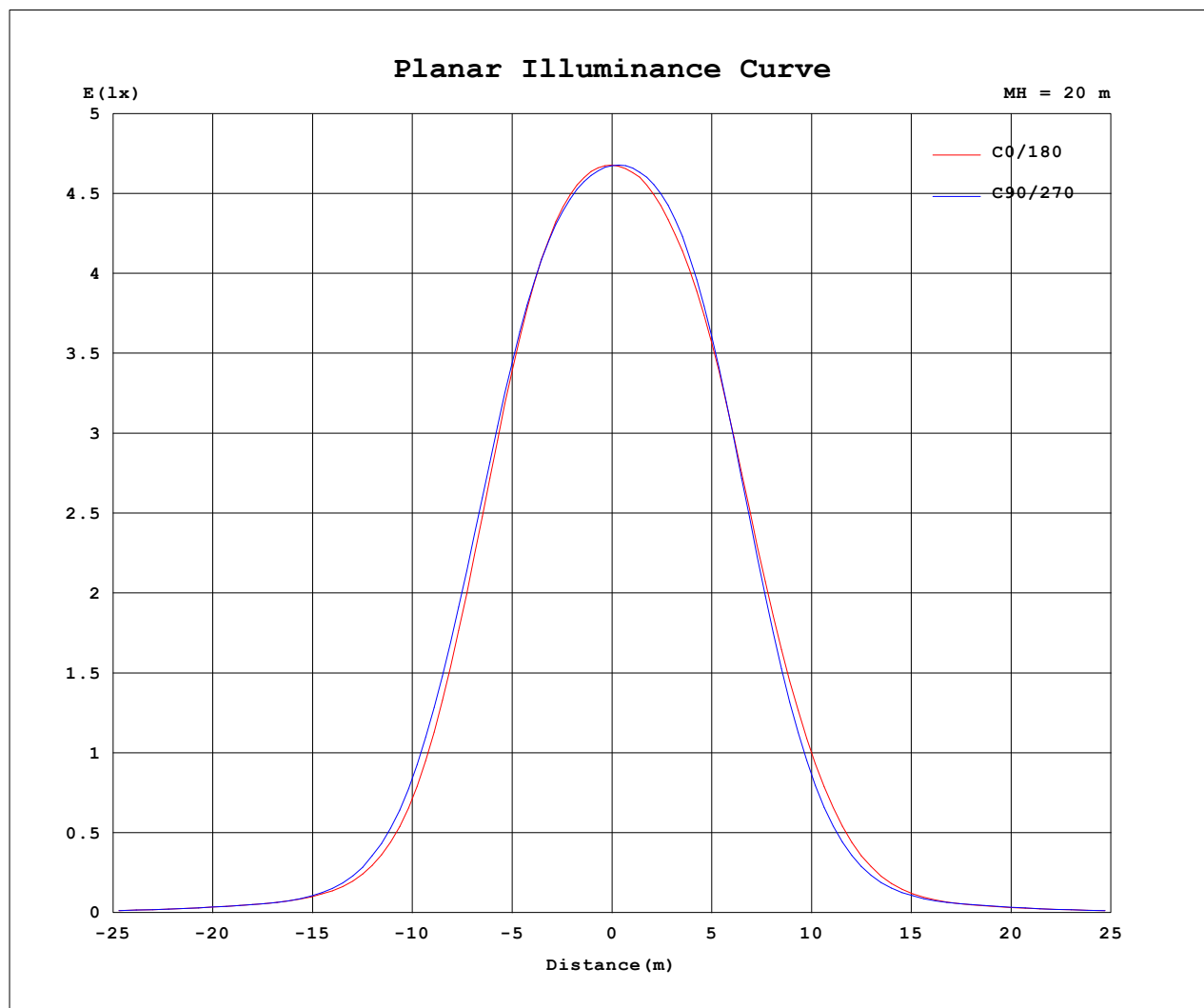
AvgL	cd/m2
L_0~180 (65) av	4829
L_0~180 (75) av	2236
L_0~180 (85) av	2877
L_90~270 (65) av	4906
L_90~270 (75) av	2232
L_90~270 (85) av	2840
L_45 (65) av	6795
L_45 (75) av	2760
L_45 (85) av	3020

Standard: GB/T 29293-2012

C Range: 0 - 360DEG
 C Interval: For a lens beam angle of 36°
 Test Speed: HIGH
 Temperature: 77.54 °F
 Operators: zoe
 Test Date: 2024-8-23

γ Range: 0 - 180DEG
 γ Interval: 1.0DEG
 Test System: EVERFINE GO-SPEX500_V1 SYSTEM V2.00.461
 Humidity: 65.0%
 Test Distance: 124.409" [K=1.0000]
 Remarks: LAMP: BXRH-30G10T0-G-83 Ra: 90
 LENS: PM-1084B 36R
 NO DRIVER: 500mA
 30minutes warm-up

Planar Illuminance Curve



C Range: 0 - 360DEG
C Interval: For a lens beam angle of 36°
Test Speed: HIGH
Temperature: 77.54°F
Operators: zoe
Test Date: 2024-8-23

γ Range: 0 - 180DEG
γ Interval: 1.0DEG
Test System: EVERFINE GO-SPEX500_V1 SYSTEM V2.00.461
Humidity: 65.0%
Test Distance: 124.409" [K=1.0000]
Remarks: LAMP: BXRH-30G10T0-G-83 Ra: 90
LENS: PM-1084B 36R
NO DRIVER: 500mA
30minutes warm-up

LUMINOUS DISTRIBUTION INTENSITY DATA

Test:U:17.659V I:0.5000A P:8.8295W PF:1.0000 Freq:49.99Hz Lamp Flux:1124.6x1 lm		
NAME: CTL-MM-1.5-30K-36-SQ-AD-OPL	TYPE:	WEIGHT:
SPEC.: 3000K	DIM.:	SERIAL No.: 2408231154
MFR.: MERCURY LIGHTING	SUR.: 0.002601m2	Shielding Angle:

Table--1

UNIT: cd

C (DEG) γ (DEG)	0	30	60	90	120	150	180	210	240	270	300	330						
0	1870	1870	1870	1870	1870	1870	1870	1870	1870	1870	1870	1870						
5	1841	1837	1826	1832	1828	1834	1841	1842	1857	1863	1861	1853						
10	1711	1690	1684	1711	1712	1726	1733	1735	1763	1773	1765	1736						
15	1414	1381	1386	1445	1458	1488	1503	1491	1515	1514	1492	1453						
20	962	946	961	1031	1071	1100	1107	1096	1103	1075	1042	1001						
25	511	513	532	591	628	667	680	667	651	606	566	533						
30	223	229	239	267	289	324	334	327	308	273	249	230						
35	100	103	106	112	116	130	133	131	126	113	104	98.8						
40	59.0	60.2	60.2	58.6	59.1	61.3	60.8	62.4	61.9	58.8	58.8	58.0						
45	41.5	43.0	42.9	41.0	43.1	42.6	38.4	42.3	42.5	39.9	43.7	43.0						
50	26.2	30.2	30.1	26.4	30.8	30.2	25.1	29.4	29.9	25.3	30.5	30.3						
55	17.5	19.9	19.6	17.9	19.9	19.6	17.1	18.9	19.2	17.2	19.4	19.7						
60	10.6	13.0	13.2	10.9	13.3	12.7	9.88	12.3	12.5	10.1	12.8	13.1						
65	5.61	7.53	7.63	5.72	7.49	6.93	5.00	6.63	6.77	5.07	7.30	7.58						
70	3.08	3.81	3.83	3.03	3.59	3.27	2.55	3.12	3.15	2.62	3.49	3.77						
75	1.68	2.03	2.01	1.62	1.84	1.65	1.33	1.59	1.63	1.39	1.79	2.00						
80	0.96	1.17	1.14	0.90	1.02	0.89	0.74	0.86	0.89	0.78	1.00	1.16						
85	0.76	0.82	0.79	0.72	0.69	0.57	0.54	0.55	0.56	0.57	0.66	0.81						
90	0.00	0.00	0.00	0.00	0.00	0.00	0.00	0.00	0.00	0.00	0.00	0.00						
95	0.00	0.00	0.00	0.00	0.00	0.00	0.00	0.00	0.00	0.00	0.00	0.00						
100	0.00	0.00	0.00	0.00	0.00	0.00	0.00	0.00	0.00	0.00	0.00	0.00						
105	0.00	0.00	0.00	0.00	0.00	0.00	0.00	0.00	0.00	0.00	0.00	0.00						
110	0.00	0.00	0.00	0.00	0.00	0.00	0.00	0.00	0.00	0.00	0.00	0.00						
115	0.00	0.00	0.00	0.00	0.00	0.00	0.00	0.00	0.00	0.00	0.00	0.00						
120	0.00	0.00	0.00	0.00	0.00	0.00	0.00	0.00	0.00	0.00	0.00	0.00						
125	0.00	0.00	0.00	0.00	0.00	0.00	0.00	0.00	0.00	0.00	0.00	0.00						
130	0.00	0.00	0.00	0.00	0.00	0.00	0.00	0.00	0.00	0.00	0.00	0.00						
135	0.00	0.00	0.00	0.00	0.00	0.00	0.00	0.00	0.00	0.00	0.00	0.00						
140	0.00	0.00	0.00	0.00	0.00	0.00	0.00	0.00	0.00	0.00	0.00	0.00						
145	0.00	0.00	0.00	0.00	0.00	0.00	0.00	0.00	0.00	0.00	0.00	0.00						
150	0.00	0.00	0.00	0.00	0.00	0.00	0.00	0.00	0.00	0.00	0.00	0.00						
155	0.00	0.00	0.00	0.00	0.00	0.00	0.00	0.00	0.00	0.00	0.00	0.00						
160	0.00	0.00	0.00	0.00	0.00	0.00	0.00	0.00	0.00	0.00	0.00	0.00						
165	0.00	0.00	0.00	0.00	0.00	0.00	0.00	0.00	0.00	0.00	0.00	0.00						
170	0.00	0.00	0.00	0.00	0.00	0.00	0.00	0.00	0.00	0.00	0.00	0.00						
175	0.00	0.00	0.00	0.00	0.00	0.00	0.00	0.00	0.00	0.00	0.00	0.00						
180	0.00	0.00	0.00	0.00	0.00	0.00	0.00	0.00	0.00	0.00	0.00	0.00						

C Range: 0 - 360DEG

C Interval:For a lens beam angle of 36°

Test Speed: HIGH

Temperature:77.54 °F

Operators:zoe

Test Date:2024-8-23

γ Range: 0 - 180DEG

γ Interval: 1.0DEG

Test System:EVERFINE GO-SPEX500_V1 SYSTEM V2.00.461

Humidity:65.0%

Test Distance:124.409" [K=1.0000]

Remarks: LAMP:BXRH-30G10T0-G-83 Ra:90

LENS:PM-1084B 36R

NO DRIVER:500mA

30minutes warm-up