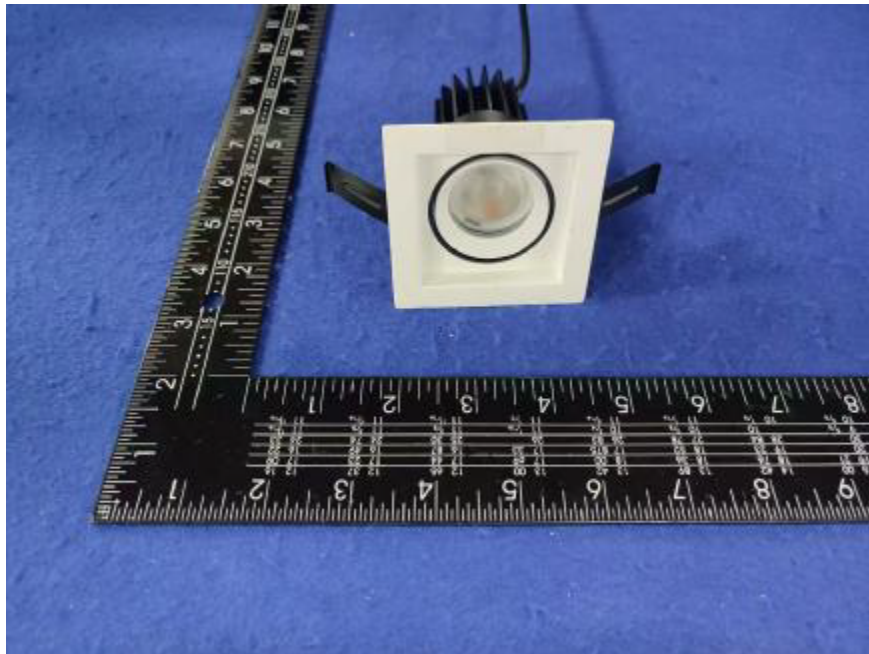


Photometric Report for each Light Engine
used in double and triple configuration
for Flanged and Flangeless Trim



Light Output Ratio:	88.1%	
Luminaire Power:	8.828 W	
SHR Nominal:	0.00	Calculated using the TM5
SHR Maximum:	0.30	fine grid method.

C Range: 0 - 360DEG
C Interval: For a lens beam angle of 24°
Test Speed: HIGH
Temperature: 77.54 °F
Operators: zoe
Test Date: 2024-8-23

γ Range: 0 - 180DEG
γ Interval: 1.0DEG
Test System: EVERFINE GO-SPEX500_V1 SYSTEM V2.00.461
Humidity: 65.0%
Test Distance: 124.409" [K=1.0000]
Remarks: LAMP: BXRH-30G10T0-G-83 Ra: 90
LENS: PM-1084A 24R
NO DRIVER: 500mA
30minutes warm-up

LUMINOUS INTENSITY DISTRIBUTION DIAGRAM

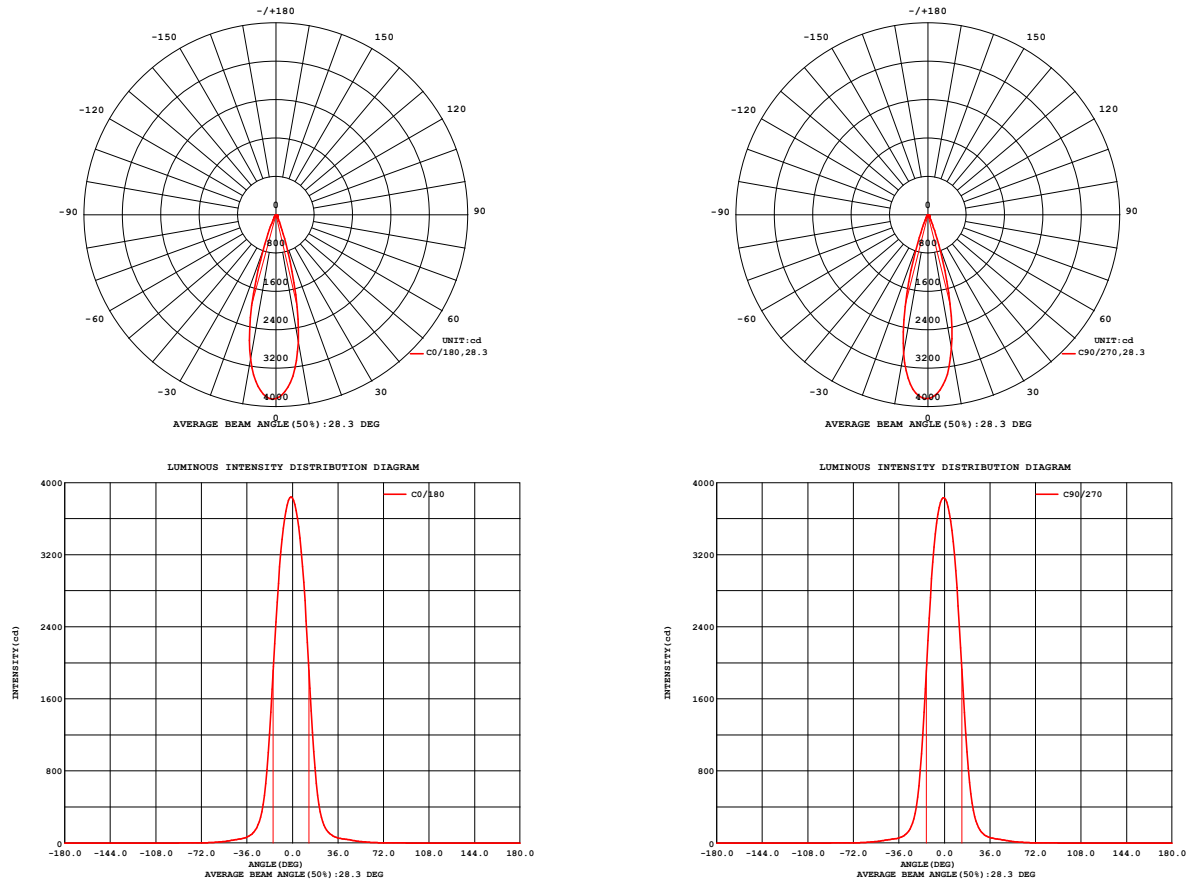


Fig. C0/C180

Fig. C90/C270

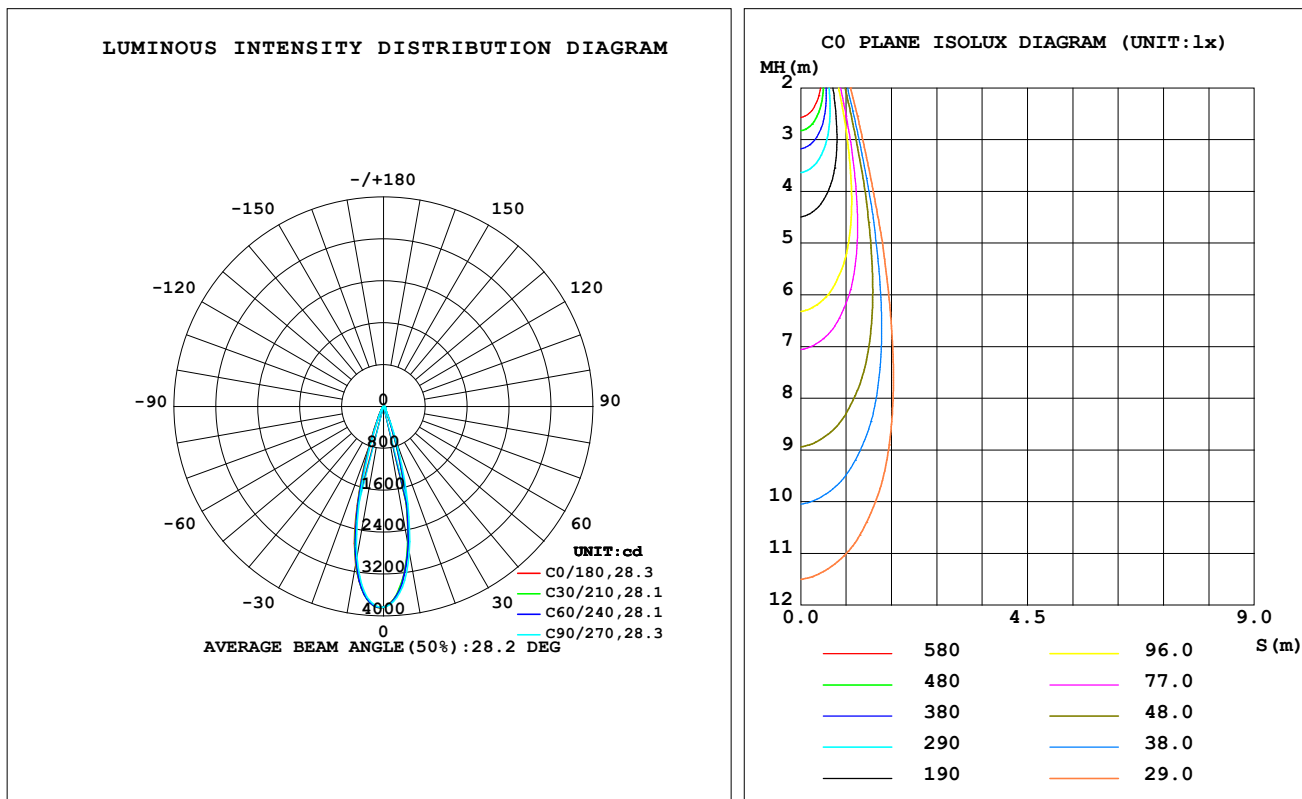
C Range: 0 - 360DEG
C Interval: For a lens beam angle of 24°
Test Speed: HIGH
Temperature: 77.54 °F
Operators: zoe
Test Date: 2024-8-23

γ Range: 0 - 180DEG
γ Interval: 1.0DEG
Test System: EVERFINE GO-SPEX500_V1 SYSTEM V2.00.461
Humidity: 65.0%
Test Distance: 124.409" [K=1.0000]
Remarks: LAMP: BXRH-30G10T0-G-83 Ra: 90
LENS: PM-1084A 24R
NO DRIVER: 500mA
30minutes warm-up

LUMINAIRE PHOTOMETRIC TEST REPORT

Test:U:17.655V I:0.5000A P:8.8275W PF:1.0000 Freq:49.99Hz Lamp Flux:1124.6x1 lm		
NAME: CTL-MM-1.5-30K-24-SQ-AD-OPL	TYPE:	WEIGHT:
SPEC.: 3000K	DIM.:	SERIAL No.: 2408231153
MFR.: MERCURY LIGHTING	SUR.: 0.002601m2	Shielding Angle:

DATA OF LAMP		PHOTOMETRIC DATA Eff: 112.23 lm/W			
MODEL	Brideglux	I _{max} (cd)	3843	S/MH (C0/180)	0.47
NOMINAL POWER (W)	9	LOR (%)	88.1	S/MH (C90/270)	0.45
RATED VOLTAGE (V)	18	TOTAL FLUX (lm)	990.71	☒ UP, DN (C0-180)	0.0, 43.2
NOMINAL FLUX (lm)	1124.6	CIE CLASS	DIRECT	☒ UP, DN (C180-360)	0.0, 44.9
LAMPS INSIDE	1	☒ up (%)	0.0	CIBSE SHR NOM	0.00
TEST VOLTAGE (V)	18	☒ down (%)	88.1	CIBSE SHR MAX	0.30



C Range: 0 - 360DEG

C Interval: For a lens beam angle of 24°

Test Speed: HIGH

Temperature: 77.54 °F

Operators: zoe

Test Date: 2024-8-23

γ Range: 0 - 180DEG

γ Interval: 1.0DEG

Test System: EVERFINE GO-SPEX500_V1 SYSTEM V2.00.461

Humidity: 65.0%

Test Distance: 124.409" [K=1.0000]

Remarks: LAMP: BXRH-30G10T0-G-83 Ra: 90

LENS: PM-1084A 24R

NO DRIVER: 500mA

30minutes warm-up

ZONAL FLUX DIAGRAM

ZONAL FLUX DIAGRAM:

°	C0	C45	C90	C135	C180	C225	C270	C315	°	zone	total	%lum,lamp
10	2693	2690	2832	2970	3066	3034	2931	2785	0- 10	320.6	320.6	32.4,28.5
20	531.3	569.0	672.6	743.2	814.0	748.8	635.9	553.5	10- 20	451.8	772.4	78,68.7
30	99.07	106.2	110.6	114.5	127.2	119.1	101.6	92.01	20- 30	123.7	896.1	90.4,79.7
40	45.49	47.70	48.33	48.31	48.57	47.51	44.59	43.49	30- 40	42.35	938.4	94.7,83.4
50	23.25	28.20	24.89	29.64	24.44	28.76	23.54	27.50	40- 50	28.50	966.9	97.6,86
60	8.605	10.75	9.190	11.16	8.712	10.74	8.876	10.64	50- 60	15.52	982.5	99.2,87.4
70	2.615	3.220	2.628	3.091	2.479	2.968	2.468	3.175	60- 70	5.902	988.4	99.8,87.9
80	0.8729	0.9849	0.7701	0.8534	0.6786	0.8566	0.7659	0.9983	70- 80	1.762	990.1	99.9,88
90	0	0	0	0	0	0	0	0	80- 90	0.5833	990.7	100,88.1
100	0	0	0	0	0	0	0	0	90-100	0	990.7	100,88.1
110	0	0	0	0	0	0	0	0	100-110	0	990.7	100,88.1
120	0	0	0	0	0	0	0	0	110-120	0	990.7	100,88.1
130	0	0	0	0	0	0	0	0	120-130	0	990.7	100,88.1
140	0	0	0	0	0	0	0	0	130-140	0	990.7	100,88.1
150	0	0	0	0	0	0	0	0	140-150	0	990.7	100,88.1
160	0	0	0	0	0	0	0	0	150-160	0	990.7	100,88.1
170	0	0	0	0	0	0	0	0	160-170	0	990.7	100,88.1
180	0	0	0	0	0	0	0	0	170-180	0	990.7	100,88.1
DEG	LUMINOUS INTENSITY:cd									UNIT:lm		

C Range: 0 - 360DEG

C Interval:For a lens beam angle of 24°

Test Speed: HIGH

Temperature:77.54°F

Operators:zoe

Test Date:2024-8-23

γ Range: 0 - 180DEG

γ Interval: 1.0DEG

Test System:EVERFINE GO-SPEX500_V1 SYSTEM V2.00.461

Humidity:65.0%

Test Distance:124.409" [K=1.0000]

Remarks: LAMP:BXRH-30G10T0-G-83 Ra:90

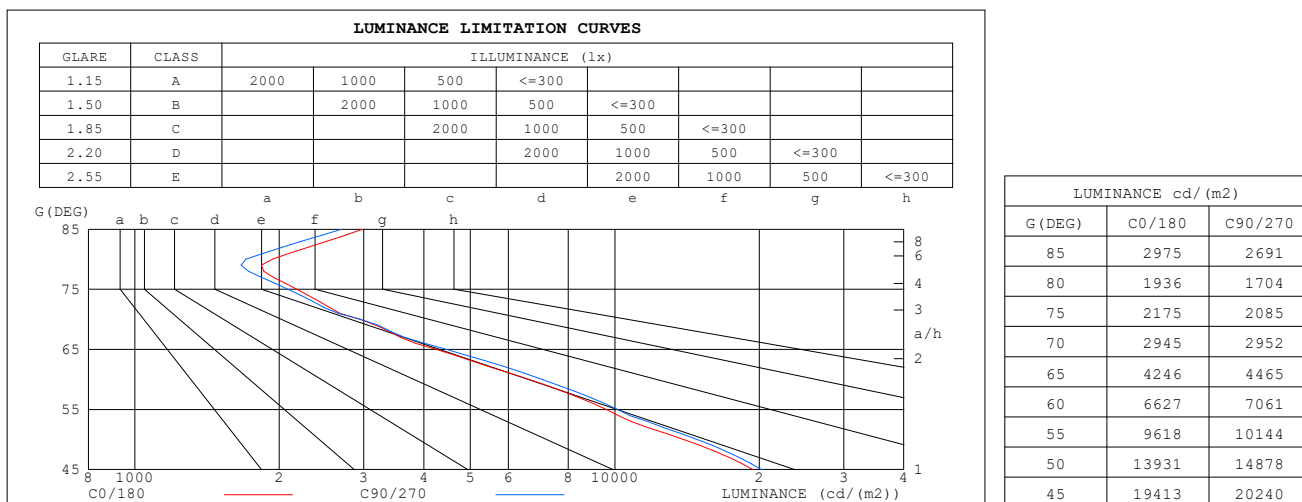
LENS:PM-1084A 24R

NO DRIVER:500mA

30minutes warm-up

LUMINANCE LIMITATION CURVES

Test:U:17.655V I:0.5000A P:8.8275W PF:1.0000 Freq:49.99Hz Lamp Flux:1124.6x1 lm		
NAME: CTL-MM-1.5-30K-24-SQ-AD-OPL	TYPE:	WEIGHT:
SPEC.: 3000K	DIM.:	SERIAL No.: 2408231153
MFR.: MERCURY LIGHTING	SUR.: 0.002601m2	Shielding Angle:



C Range: 0 - 360DEG

C Interval: For a lens beam angle of 24°

Test Speed: HIGH

Temperature: 77.54 °F

Operators: zoe

Test Date: 2024-8-23

γ Range: 0 - 180DEG

γ Interval: 1.0DEG

Test System: EVERFINE GO-SPEX500_V1 SYSTEM V2.00.461

Humidity: 65.0%

Test Distance: 124.409" [K=1.0000]

Remarks: LAMP: BXRH-30G10T0-G-83 Ra: 90

LENS: PM-1084A 24R

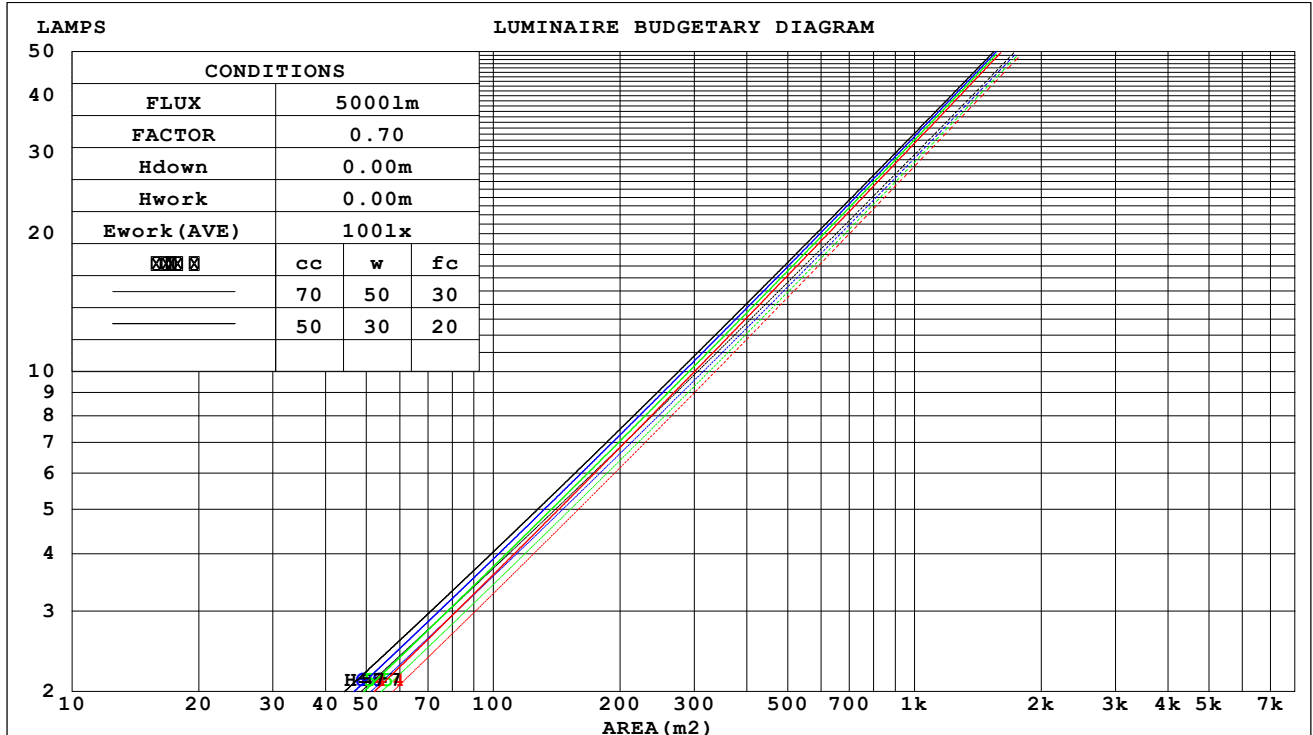
NO DRIVER: 500mA

30minutes warm-up

CU AND LUMINAIRE BUDGETARY ESTIMATE DIAGRAM

Test:U:17.655V I:0.5000A P:8.8275W PF:1.0000 Freq:49.99Hz Lamp Flux:1124.6x1 lm		
NAME: CTL-MM-1.5-30K-24-SQ-AD-OPL	TYPE:	WEIGHT:
SPEC.: 3000K	DIM.:	SERIAL No.: 2408231153
MFR.: MERCURY LIGHTING	SUR.: 0.002601m2	Shielding Angle:

cc	80%			70%			50%			30%			10%			0
w	50%	30%	10%	50%	30%	10%	50%	30%	10%	50%	30%	10%	50%	30%	10%	0
fc	20%			20%			20%			20%			20%			0
RCR	RCR:Room Cavity Ratio															



C Range: 0 - 360DEG
 C Interval: For a lens beam angle of 24°
 Test Speed: HIGH
 Temperature: 77.54 °F
 Operators: zoe
 Test Date: 2024-8-23

γ Range: 0 - 180DEG
 γ Interval: 1.0DEG
 Test System: EVERFINE GO-SPEX500_V1 SYSTEM V2.00.461
 Humidity: 65.0%
 Test Distance: 124.409" [K=1.0000]
 Remarks: LAMP: BXRH-30G10T0-G-83 Ra:90
 LENS: PM-1084A 24R
 NO DRIVER: 500mA
 30minutes warm-up

WEC AND CCEC

Test:U:17.655V I:0.5000A P:8.8275W PF:1.0000 Freq:49.99Hz Lamp Flux:1124.6x1 lm		
NAME: CTL-MM-1.5-30K-24-SQ-AD-OPL	TYPE:	WEIGHT:
SPEC.: 3000K	DIM.:	SERIAL No.: 2408231153
MFR.: MERCURY LIGHTING	SUR.: 0.002601m2	Shielding Angle:

cc	80%			70%			50%			30%			10%			0
w	50%	30%	10%	50%	30%	10%	50%	30%	10%	50%	30%	10%	50%	30%	10%	0
fc	20%			20%			20%			20%			20%			0
RCR	RCR:Room Cavity Ratio						Wall Exitance Coefficients(WEC)									
0.0																
1.0	.128	.073	.023	.122	.070	.022	.111	.064	.020	.101	.058	.019	.092	.053	.017	
2.0	.119	.065	.020	.114	.063	.019	.105	.059	.018	.097	.054	.017	.089	.050	.016	
3.0	.111	.059	.018	.107	.057	.017	.100	.054	.016	.093	.051	.016	.086	.048	.015	
4.0	.104	.054	.016	.101	.053	.016	.095	.050	.015	.089	.048	.014	.083	.045	.014	
5.0	.098	.050	.015	.095	.049	.014	.090	.047	.014	.085	.045	.013	.080	.043	.013	
6.0	.093	.047	.013	.090	.046	.013	.086	.044	.013	.081	.042	.012	.077	.041	.012	
7.0	.088	.044	.012	.086	.043	.012	.082	.041	.012	.078	.040	.012	.074	.039	.011	
8.0	.084	.041	.012	.082	.040	.011	.078	.039	.011	.075	.038	.011	.072	.037	.011	
9.0	.080	.039	.011	.078	.038	.011	.075	.037	.011	.072	.036	.010	.069	.035	.010	
10.0	.076	.037	.010	.075	.036	.010	.072	.035	.010	.069	.034	.010	.067	.034	.010	

cc	80%			70%			50%			30%			10%			0
w	50%	30%	10%	50%	30%	10%	50%	30%	10%	50%	30%	10%	50%	30%	10%	0
fc	20%			20%			20%			20%			20%			0
RCR	RCR:Room Cavity Ratio						Ceiling Cavity Exitance Coefficients(CCEC)									
0.0	.168	.168	.168	.143	.143	.143	.098	.098	.098	.056	.056	.056	.018	.018	.018	
1.0	.149	.139	.130	.127	.119	.112	.087	.082	.077	.050	.047	.045	.016	.015	.015	
2.0	.133	.117	.103	.114	.101	.089	.078	.070	.062	.045	.040	.036	.014	.013	.012	
3.0	.121	.100	.083	.103	.086	.072	.071	.060	.051	.041	.035	.030	.013	.011	.010	
4.0	.110	.086	.069	.094	.075	.060	.065	.052	.042	.037	.030	.025	.012	.010	.008	
5.0	.101	.076	.057	.087	.065	.050	.060	.046	.035	.035	.027	.021	.011	.009	.007	
6.0	.093	.067	.048	.080	.058	.042	.055	.041	.030	.032	.024	.018	.010	.008	.006	
7.0	.086	.060	.041	.074	.052	.036	.051	.036	.025	.030	.021	.015	.010	.007	.005	
8.0	.081	.054	.035	.069	.047	.031	.048	.033	.022	.028	.019	.013	.009	.006	.004	
9.0	.076	.049	.031	.065	.042	.027	.045	.030	.019	.026	.018	.011	.009	.006	.004	
10.0	.071	.045	.027	.062	.039	.024	.043	.027	.017	.025	.016	.010	.008	.005	.003	

C Range: 0 - 360DEG
 C Interval:For a lens beam angle of 24°
 Test Speed: HIGH
 Temperature:77.54 °F
 Operators:zoe
 Test Date:2024-8-23

γ Range: 0 - 180DEG
 γ Interval: 1.0DEG
 Test System:EVERFINE GO-SPEX500_V1 SYSTEM V2.00.461
 Humidity:65.0%
 Test Distance:124.409" [K=1.0000]
 Remarks: LAMP:BXRH-30G10T0-G-83 Ra:90
 LENS:PM-1084A 24R
 NO DRIVER:500mA
 30minutes warm-up

UGR(Unified Glare Rating) Table

Test:U:17.655V I:0.5000A P:8.8275W PF:1.0000 Freq:49.99Hz Lamp Flux:1124.6x1 lm											
NAME: CTL-MM-1.5-30K-24-SQ-AD-OPL					TYPE:			WEIGHT:			
SPEC.: 3000K					DIM.:			SERIAL No.: 2408231153			
MFR.: MERCURY LIGHTING					SUR.: 0.002601m2			Shielding Angle:			
ceiling/cavity	0.7	0.7	0.5	0.5	0.3	0.7	0.7	0.5	0.5	0.3	
walls	0.5	0.3	0.5	0.3	0.3	0.5	0.3	0.5	0.3	0.3	
working plane	0.2	0.2	0.2	0.2	0.2	0.2	0.2	0.2	0.2	0.2	
Room dimensions		Viewed crosswise					Viewed endwise				
x = 2H y = 2H	13.8	14.5	14.0	14.7	14.8	14.0	14.7	14.2	14.9	15.0	
	3H	13.9	14.6	14.1	14.7	14.9	14.1	14.8	14.3	14.9	15.1
	4H	13.9	14.5	14.1	14.7	14.9	14.1	14.7	14.3	14.9	15.1
	6H	13.8	14.4	14.1	14.7	14.9	14.0	14.6	14.3	14.8	15.1
	8H	13.8	14.4	14.1	14.6	14.9	14.0	14.6	14.3	14.8	15.1
	12H	13.8	14.4	14.1	14.6	14.9	14.0	14.5	14.3	14.8	15.0
4H	2H	13.9	14.6	14.2	14.8	15.0	14.1	14.7	14.4	14.9	15.2
	3H	14.0	14.6	14.4	14.8	15.1	14.2	14.8	14.5	15.0	15.3
	4H	14.0	14.5	14.4	14.8	15.1	14.2	14.7	14.5	15.0	15.3
	6H	14.0	14.4	14.4	14.8	15.1	14.2	14.6	14.5	14.9	15.3
	8H	14.0	14.4	14.4	14.8	15.1	14.1	14.6	14.5	14.9	15.3
	12H	14.0	14.4	14.4	14.7	15.1	14.1	14.5	14.5	14.9	15.3
8H	4H	13.9	14.4	14.3	14.7	15.1	14.1	14.5	14.5	14.9	15.2
	6H	13.9	14.3	14.4	14.7	15.1	14.1	14.4	14.5	14.8	15.2
	8H	14.0	14.3	14.4	14.7	15.1	14.1	14.4	14.5	14.8	15.2
	12H	14.0	14.2	14.5	14.7	15.2	14.1	14.4	14.6	14.8	15.3
12H	4H	13.9	14.3	14.3	14.6	15.0	14.1	14.4	14.5	14.8	15.2
	6H	13.9	14.2	14.3	14.6	15.1	14.0	14.3	14.5	14.8	15.2
	8H	13.9	14.2	14.4	14.6	15.1	14.1	14.3	14.5	14.8	15.2
Variations with the observer position at spacings(CIE Pub.117):											
S = 1.0H	+ 1.2 / - 2.0					+ 1.2 / - 2.0					
1.5H	+ 0.6 / - 1.5					+ 0.7 / - 1.2					
2.0H	+ 2.6 / - 2.9					+ 2.7 / - 2.8					

CIE Pub.117, 1125 lm Total Lamp Luminous Flux Correct (8log(F/F0) = 0.4)
 Area: 0.002601 m2

C Range: 0 - 360DEG	γ Range: 0 - 180DEG
C Interval: For a lens beam angle of 24°	γ Interval: 1.0DEG
Test Speed: HIGH	Test System: EVERFINE GO-SPEX500_V1 SYSTEM V2.00.461
Temperature: 77.54 °F	Humidity: 65.0%
Operators: zoe	Test Distance: 124.409" [K=1.0000]
Test Date: 2024-8-23	Remarks: LAMP: BXRH-30G10T0-G-83 Ra: 90
	LENS: PM-1084A 24R
	NO DRIVER: 500mA
	30minutes warm-up

UTILIZATION FACTORS TABLE

Test:U:17.655V I:0.5000A P:8.8275W PF:1.0000 Freq:49.99Hz Lamp Flux:1124.6x1 lm		
NAME: CTL-MM-1.5-30K-24-SQ-AD-OPL	TYPE:	WEIGHT:
SPEC.: 3000K	DIM.:	SERIAL No.: 2408231153
MFR.: MERCURY LIGHTING	SUR.: 0.002601m2	Shielding Angle:

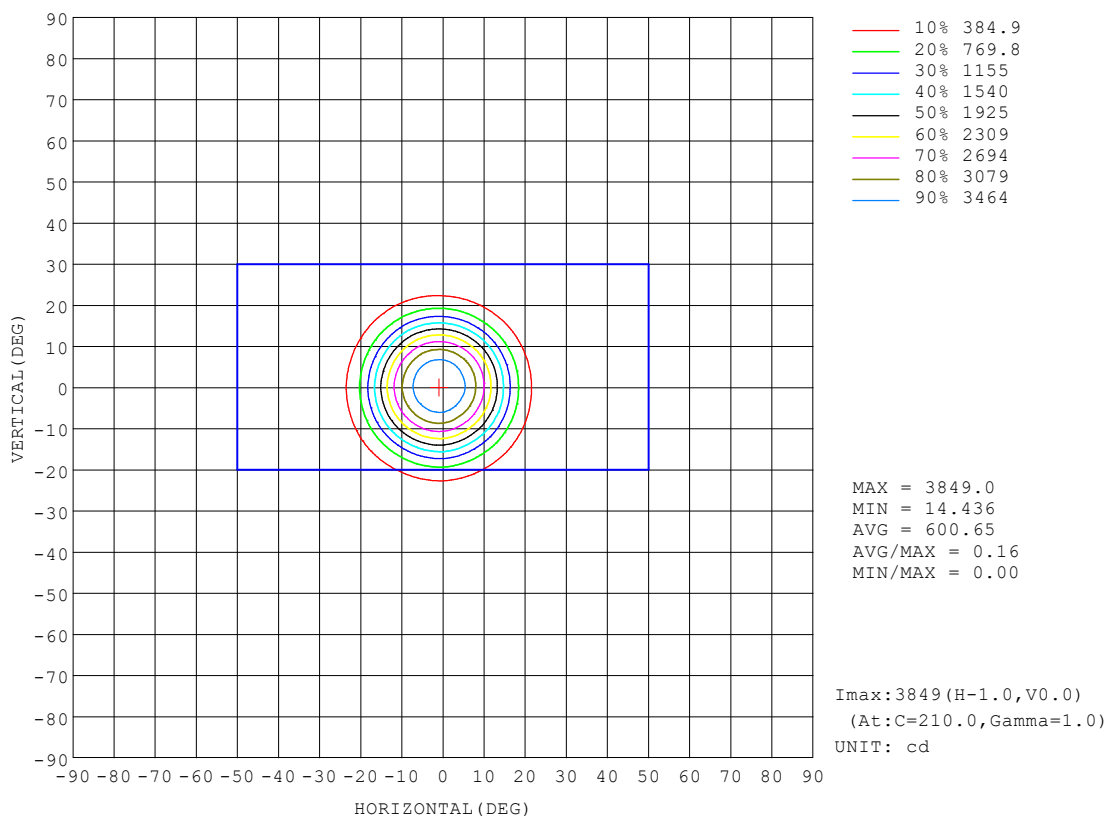
REFLECTANCE										
Ceiling	0.8	0.8	0.8	0.7	0.7	0.7	0.5	0.5	0.5	0
Walls	0.7	0.5	0.3	0.7	0.5	0.3	0.7	0.5	0.3	0
Working plane	0.2	0.2	0.2	0.2	0.2	0.2	0.2	0.2	0.2	0
ROOM INDEX	UTILIZATION FACTORS (PERCENT) $k(RI) \times RCR = 5$									
$k = 0.60$	78	72	69	77	72	69	77	72	69	66
0.80	84	79	76	84	79	76	83	78	75	72
1.00	88	83	80	87	83	80	86	83	79	76
1.25	91	87	84	90	86	84	89	85	83	79
1.50	94	90	87	93	89	86	91	88	85	82
2.00	96	92	90	95	91	89	92	90	88	83
2.50	97	94	92	96	93	91	93	91	89	84
3.00	99	96	93	97	94	92	94	92	90	85
4.00	100	98	96	99	97	95	95	94	93	86
5.00	101	100	98	100	98	97	96	95	94	87
ROOM INDEX	UF(total)									Direct
According to DIN EN 13032-2 2004			Suspended					SHRNOM = 1.25		

C Range: 0 - 360DEG
 C Interval: For a lens beam angle of 24°
 Test Speed: HIGH
 Temperature: 77.54 °F
 Operators: zoe
 Test Date: 2024-8-23

γ Range: 0 - 180DEG
 γ Interval: 1.0DEG
 Test System: EVERFINE GO-SPEX500_V1 SYSTEM V2.00.461
 Humidity: 65.0%
 Test Distance: 124.409" [K=1.0000]
 Remarks: LAMP: BXRH-30G10T0-G-83 Ra:90
 LENS: PM-1084A 24R
 NO DRIVER: 500mA
 30minutes warm-up

ISOCANDELA DIAGRAM

Test:U:17.655V I:0.5000A P:8.8275W PF:1.0000 Freq:49.99Hz Lamp Flux:1124.6x1 lm		
NAME: CTL-MM-1.5-30K-24-SQ-AD-OPL	TYPE:	WEIGHT:
SPEC.: 3000K	DIM.:	SERIAL No.: 2408231153
MFR.: MERCURY LIGHTING	SUR.: 0.002601m2	Shielding Angle:

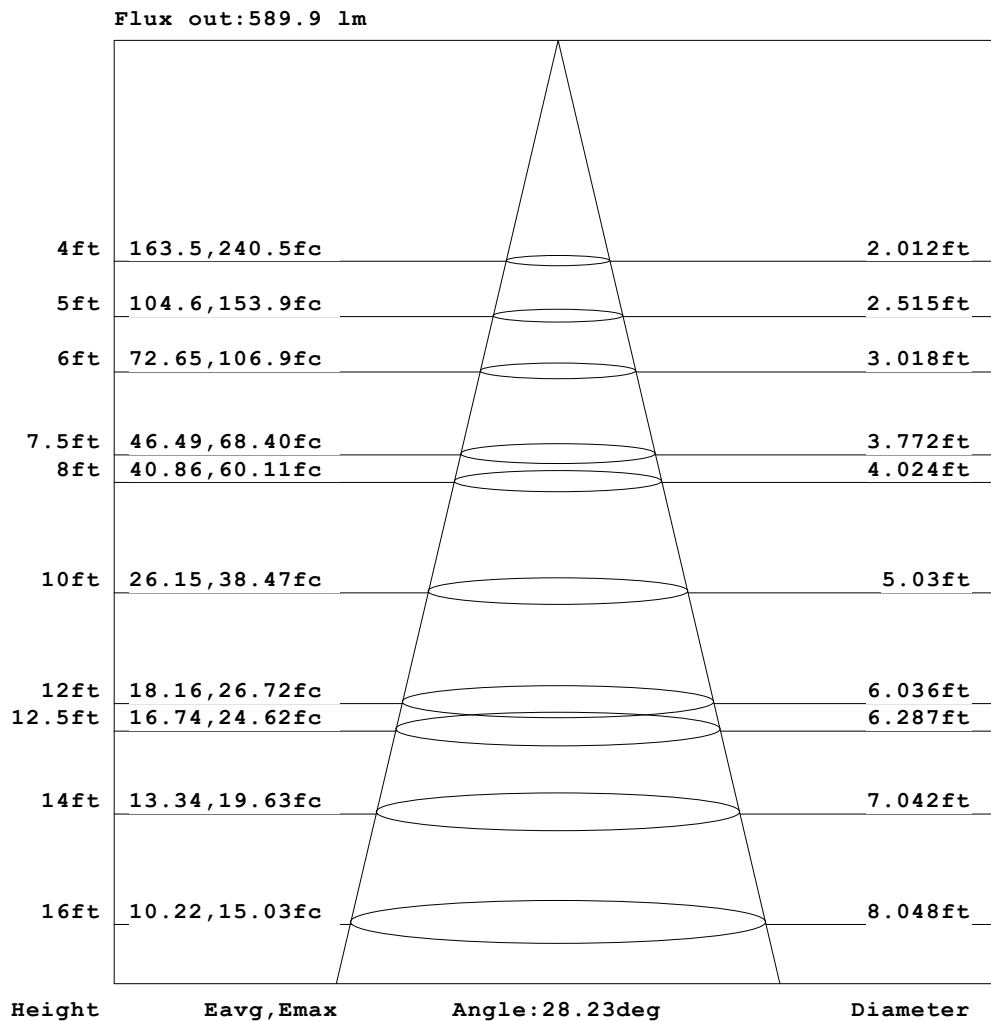


C Range: 0 - 360DEG
 C Interval: For a lens beam angle of 24°
 Test Speed: HIGH
 Temperature: 77.54 °F
 Operators: zoe
 Test Date: 2024-8-23

γ Range: 0 - 180DEG
 γ Interval: 1.0DEG
 Test System: EVERFINE GO-SPEX500_V1 SYSTEM V2.00.461
 Humidity: 65.0%
 Test Distance: 124.409" [K=1.0000]
 Remarks: LAMP: BXRH-30G10T0-G-83 Ra: 90
 LENS: PM-1084A 24R
 NO DRIVER: 500mA
 30minutes warm-up

AAI Figure

Test:U:17.655V I:0.5000A P:8.8275W PF:1.0000 Freq:49.99Hz Lamp Flux:1124.6x1 lm		
NAME: CTL-MM-1.5-30K-24-SQ-AD-OPL	TYPE:	WEIGHT:
SPEC.: 3000K	DIM.:	SERIAL No.: 2408231153
MFR.: MERCURY LIGHTING	SUR.: 0.002601m2	Shielding Angle:

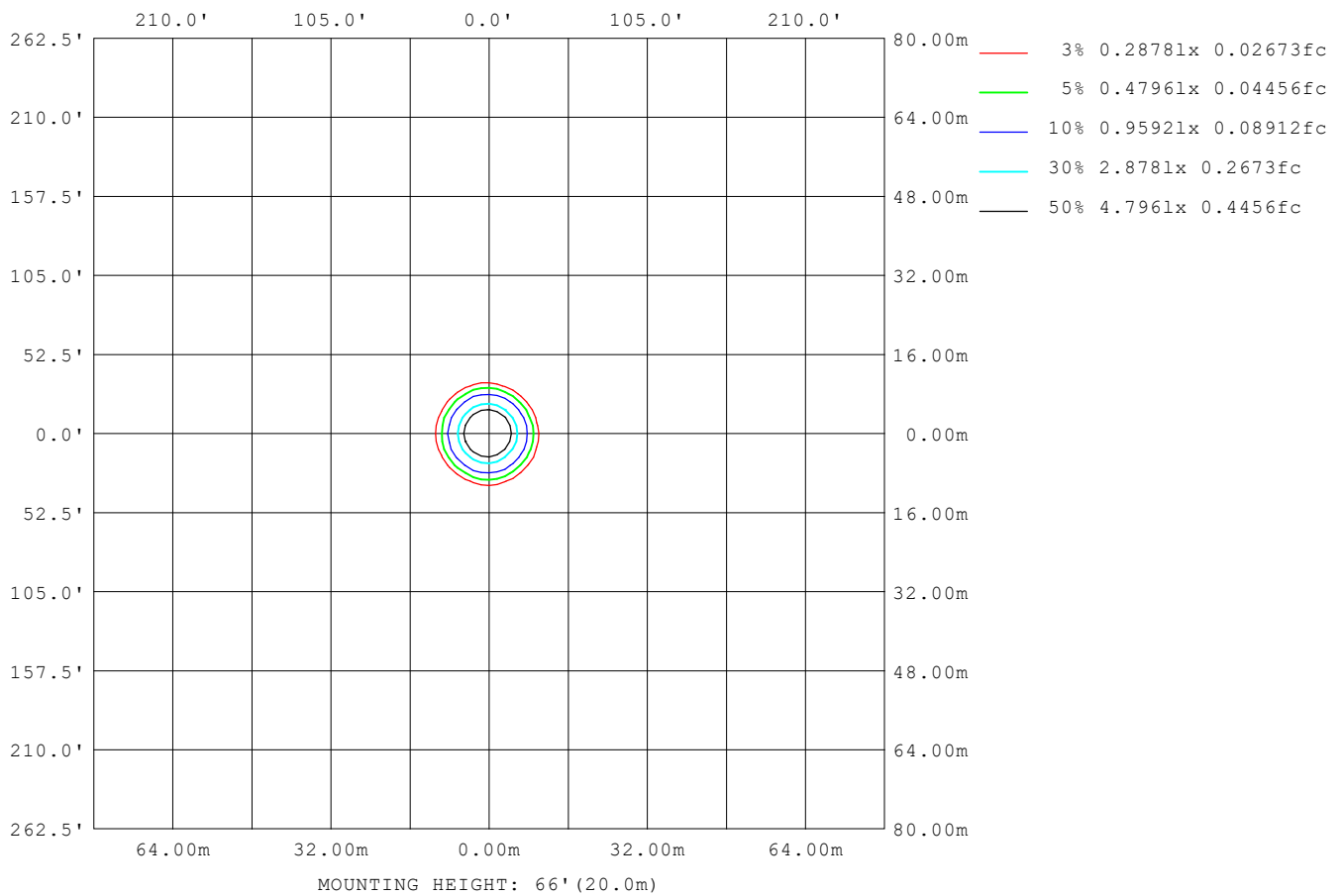


Note: The Curves indicate the illuminated area and the average illumination when the luminaire is at different distance.

C Range: 0 - 360DEG	γ Range: 0 - 180DEG
C Interval: For a lens beam angle of 24°	γ Interval: 1.0DEG
Test Speed: HIGH	Test System: EVERFINE GO-SPEX500_V1 SYSTEM V2.00.461
Temperature: 77.54 °F	Humidity: 65.0%
Operators: zoe	Test Distance: 124.409" [K=1.0000]
Test Date: 2024-8-23	Remarks: LAMP: BXRH-30G10T0-G-83 Ra:90
	LENS: PM-1084A 24R
	NO DRIVER: 500mA
	30minutes warm-up

ISOLUX DIAGRAM

Test: U:17.655V I:0.5000A P:8.8275W PF:1.0000 Freq:49.99Hz Lamp Flux: 1124.6x1 lm		
NAME: CTL-MM-1.5-30K-24-SQ-AD-OPL	TYPE:	WEIGHT:
SPEC.: 3000K	DIM.:	SERIAL No.: 2408231153
MFR.: MERCURY LIGHTING	SUR.: 0.002601m2	Shielding Angle:



C Range: 0 - 360DEG
C Interval: For a lens beam angle of 24°
Test Speed: HIGH
Temperature: 77.54 °F
Operators: zoe
Test Date: 2024-8-23

γ Range: 0 - 180DEG
γ Interval: 1.0DEG
Test System: EVERFINE GO-SPEX500_V1 SYSTEM V2.00.461
Humidity: 65.0%
Test Distance: 124.409" [K=1.0000]
Remarks: LAMP: BXRH-30G10T0-G-83 Ra:90
 LENS: PM-1084A 24R
 NO DRIVER: 500mA
 30minutes warm-up

LED Avg.L Report

Test:U:17.655V I:0.5000A P:8.8275W PF:1.0000 Freq:49.99Hz Lamp Flux:1124.6x1 lm		
NAME: CTL-MM-1.5-30K-24-SQ-AD-OPL	TYPE:	WEIGHT:
SPEC.: 3000K	DIM.:	SERIAL No.: 2408231153
MFR.: MERCURY LIGHTING	SUR.: 0.002601m2	Shielding Angle:

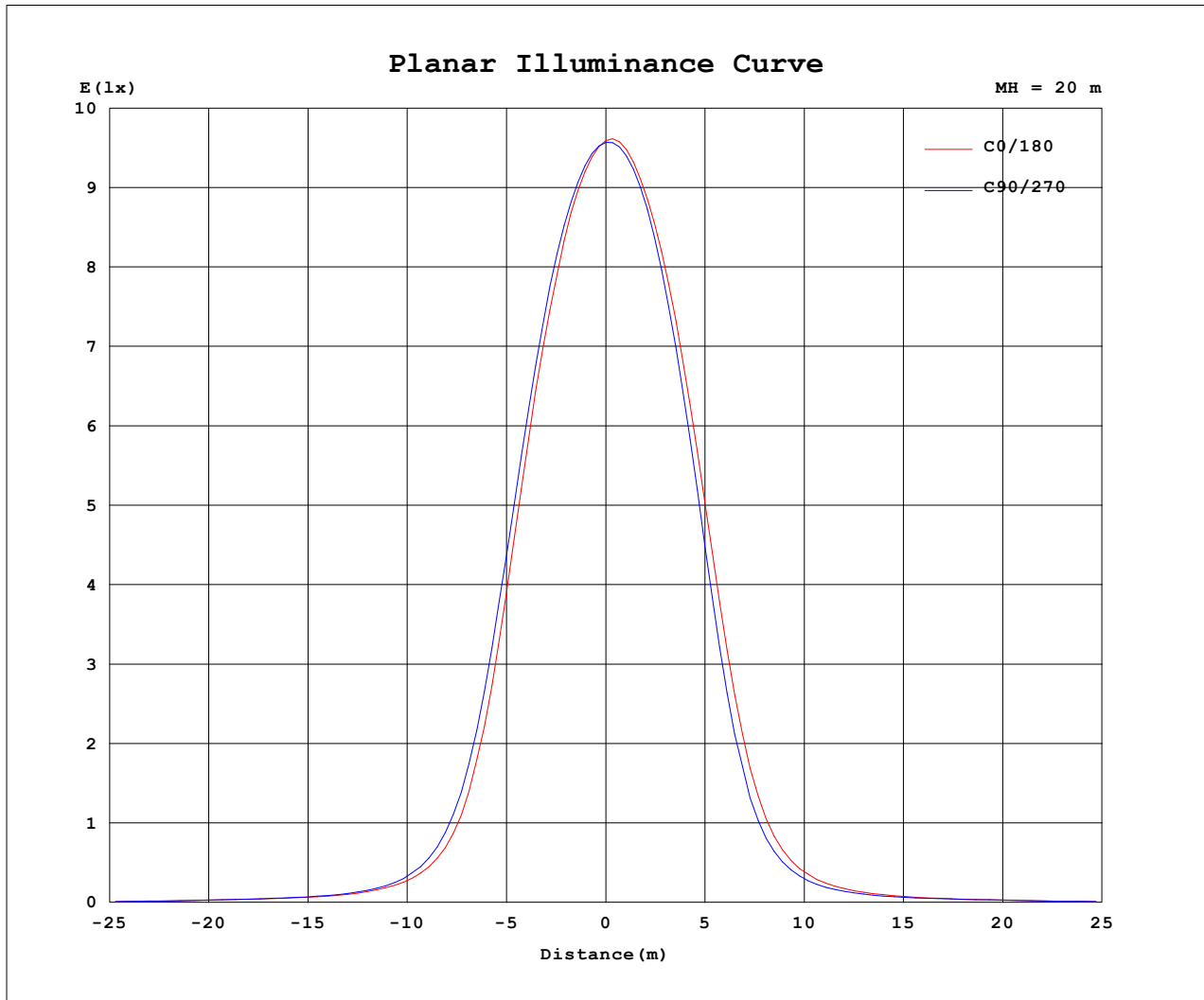
AvgL	cd/m2
L_0~180 (65) av	4211
L_0~180 (75) av	2044
L_0~180 (85) av	2645
L_90~270 (65) av	4404
L_90~270 (75) av	2042
L_90~270 (85) av	2625
L_45 (65) av	5811
L_45 (75) av	2517
L_45 (85) av	2780

Standard: GB/T 29293-2012

C Range: 0 - 360DEG
 C Interval: For a lens beam angle of 24°
 Test Speed: HIGH
 Temperature: 77.54 °F
 Operators: zoe
 Test Date: 2024-8-23

γ Range: 0 - 180DEG
 γ Interval: 1.0DEG
 Test System: EVERFINE GO-SPEX500_V1 SYSTEM V2.00.461
 Humidity: 65.0%
 Test Distance: 124.409" [K=1.0000]
 Remarks: LAMP: BXRH-30G10T0-G-83 Ra: 90
 LENS: PM-1084A 24R
 NO DRIVER: 500mA
 30minutes warm-up

Planar Illuminance Curve



C Range: 0 - 360DEG
C Interval: For a lens beam angle of 24°
Test Speed: HIGH
Temperature: 77.54 °F
Operators: zoe
Test Date: 2024-8-23

γ Range: 0 - 180DEG
γ Interval: 1.0DEG
Test System: EVERFINE GO-SPEX500_V1 SYSTEM V2.00.461
Humidity: 65.0%
Test Distance: 124.409" [K=1.0000]
Remarks: LAMP: BXRH-30G10T0-G-83 Ra: 90
LENS: PM-1084A 24R
NO DRIVER: 500mA
30minutes warm-up

LUMINOUS DISTRIBUTION INTENSITY DATA

Test:U:17.655V I:0.5000A P:8.8275W PF:1.0000 Freq:49.99Hz Lamp Flux:1124.6x1 lm		
NAME: CTL-MM-1.5-30K-24-SQ-AD-OPL	TYPE:	WEIGHT:
SPEC.: 3000K	DIM.:	SERIAL No.: 2408231153
MFR.: MERCURY LIGHTING	SUR.: 0.002601m2	Shielding Angle:

Table--1

UNIT: cd

C (DEG) (DEG)	0	30	60	90	120	150	180	210	240	270	300	330						
0	3831	3831	3831	3831	3831	3831	3831	3831	3831	3831	3831	3831						
5	3509	3484	3522	3572	3620	3655	3680	3694	3687	3648	3596	3527						
10	2693	2666	2714	2832	2926	3013	3066	3046	3022	2931	2827	2744						
15	1465	1481	1527	1688	1772	1889	1958	1899	1842	1710	1591	1509						
20	531	552	586	673	708	778	814	778	719	636	569	538						
25	199	213	219	242	250	275	286	267	250	222	203	191						
30	99.1	105	108	111	110	119	127	123	115	102	91.6	92.4						
35	60.9	63.5	64.8	65.8	64.9	68.4	72.2	69.5	66.2	60.4	56.1	57.1						
40	45.5	47.4	48.0	48.3	48.0	48.6	48.6	48.3	46.8	44.6	43.3	43.7						
45	35.6	37.9	38.4	37.3	39.4	38.9	36.0	38.2	37.7	35.0	36.6	36.4						
50	23.3	28.0	28.4	24.9	29.8	29.4	24.4	29.0	28.5	23.5	27.7	27.3						
55	14.3	17.9	17.8	15.1	18.9	18.4	14.8	18.5	17.6	14.7	17.7	17.1						
60	8.60	10.7	10.8	9.19	11.4	10.9	8.71	10.8	10.7	8.88	10.8	10.5						
65	4.66	6.19	6.31	4.91	6.54	6.16	4.60	6.04	6.05	4.77	6.31	6.04						
70	2.62	3.22	3.22	2.63	3.17	3.01	2.48	2.97	2.96	2.47	3.16	3.19						
75	1.46	1.75	1.72	1.40	1.63	1.56	1.29	1.56	1.58	1.35	1.70	1.76						
80	0.87	1.01	0.96	0.77	0.88	0.83	0.68	0.85	0.87	0.77	0.97	1.02						
85	0.67	0.70	0.67	0.61	0.59	0.55	0.53	0.55	0.59	0.58	0.65	0.72						
90	0.00	0.00	0.00	0.00	0.00	0.00	0.00	0.00	0.00	0.00	0.00	0.00						
95	0.00	0.00	0.00	0.00	0.00	0.00	0.00	0.00	0.00	0.00	0.00	0.00						
100	0.00	0.00	0.00	0.00	0.00	0.00	0.00	0.00	0.00	0.00	0.00	0.00						
105	0.00	0.00	0.00	0.00	0.00	0.00	0.00	0.00	0.00	0.00	0.00	0.00						
110	0.00	0.00	0.00	0.00	0.00	0.00	0.00	0.00	0.00	0.00	0.00	0.00						
115	0.00	0.00	0.00	0.00	0.00	0.00	0.00	0.00	0.00	0.00	0.00	0.00						
120	0.00	0.00	0.00	0.00	0.00	0.00	0.00	0.00	0.00	0.00	0.00	0.00						
125	0.00	0.00	0.00	0.00	0.00	0.00	0.00	0.00	0.00	0.00	0.00	0.00						
130	0.00	0.00	0.00	0.00	0.00	0.00	0.00	0.00	0.00	0.00	0.00	0.00						
135	0.00	0.00	0.00	0.00	0.00	0.00	0.00	0.00	0.00	0.00	0.00	0.00						
140	0.00	0.00	0.00	0.00	0.00	0.00	0.00	0.00	0.00	0.00	0.00	0.00						
145	0.00	0.00	0.00	0.00	0.00	0.00	0.00	0.00	0.00	0.00	0.00	0.00						
150	0.00	0.00	0.00	0.00	0.00	0.00	0.00	0.00	0.00	0.00	0.00	0.00						
155	0.00	0.00	0.00	0.00	0.00	0.00	0.00	0.00	0.00	0.00	0.00	0.00						
160	0.00	0.00	0.00	0.00	0.00	0.00	0.00	0.00	0.00	0.00	0.00	0.00						
165	0.00	0.00	0.00	0.00	0.00	0.00	0.00	0.00	0.00	0.00	0.00	0.00						
170	0.00	0.00	0.00	0.00	0.00	0.00	0.00	0.00	0.00	0.00	0.00	0.00						
175	0.00	0.00	0.00	0.00	0.00	0.00	0.00	0.00	0.00	0.00	0.00	0.00						
180	0.00	0.00	0.00	0.00	0.00	0.00	0.00	0.00	0.00	0.00	0.00	0.00						

C Range: 0 - 360DEG

C Interval:For a lens beam angle of 24°

Test Speed: HIGH

Temperature:77.54 °F

Operators:zoe

Test Date:2024-8-23

γ Range: 0 - 180DEG

γ Interval: 1.0DEG

Test System:EVERFINE GO-SPEX500_V1 SYSTEM V2.00.461

Humidity:65.0%

Test Distance:124.409" [K=1.0000]

Remarks: LAMP:BXRH-30G10T0-G-83 Ra:90

LENS:PM-1084A 24R

NO DRIVER:500mA

30minutes warm-up