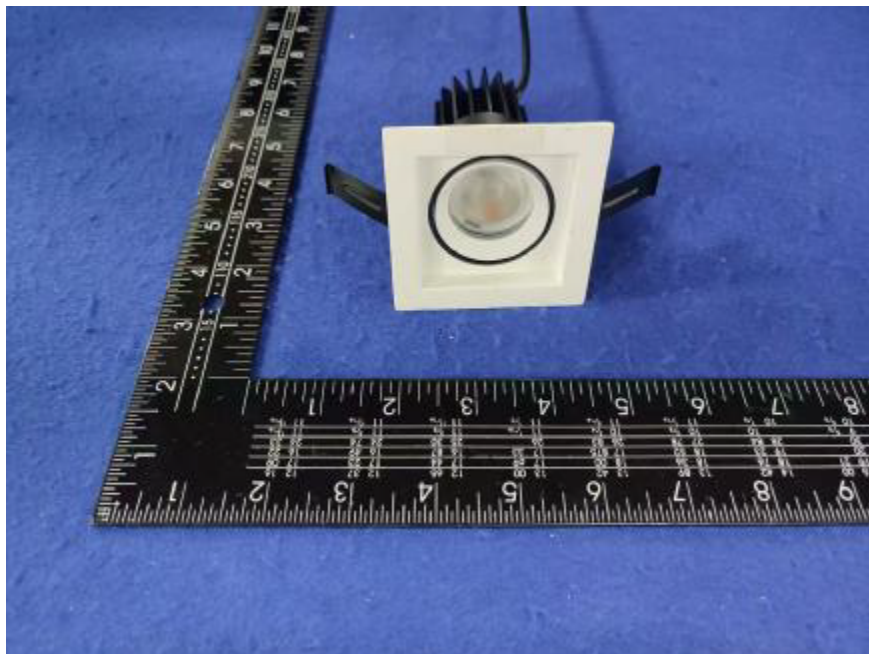


Photometric Report for each Light Engine
used in double and triple configuration
for Flanged and Flangeless Trim



Light Output Ratio:	87.9%	
Luminaire Power:	8.827 W	
SHR Nominal:	0.00	Calculated using the TM5
SHR Maximum:	0.30	fine grid method.

C Range: 0 - 360DEG
C Interval: For a lens beam angle of 15°
Test Speed: HIGH
Temperature: 77.54°F
Operators: zoe
Test Date: 2024-8-23

γ Range: 0 - 180DEG
γ Interval: 1.0DEG
Test System: EVERFINE GO-SPEX500_V1 SYSTEM V2.00.461
Humidity: 65.0%
Test Distance: 124.409" [K=1.0000]
Remarks: LAMP: BXRH-30G10T0-G-83 Ra: 90
LENS: PM-1084 15R
NO DRIVER: 500mA
30minutes warm-up

LUMINOUS INTENSITY DISTRIBUTION DIAGRAM

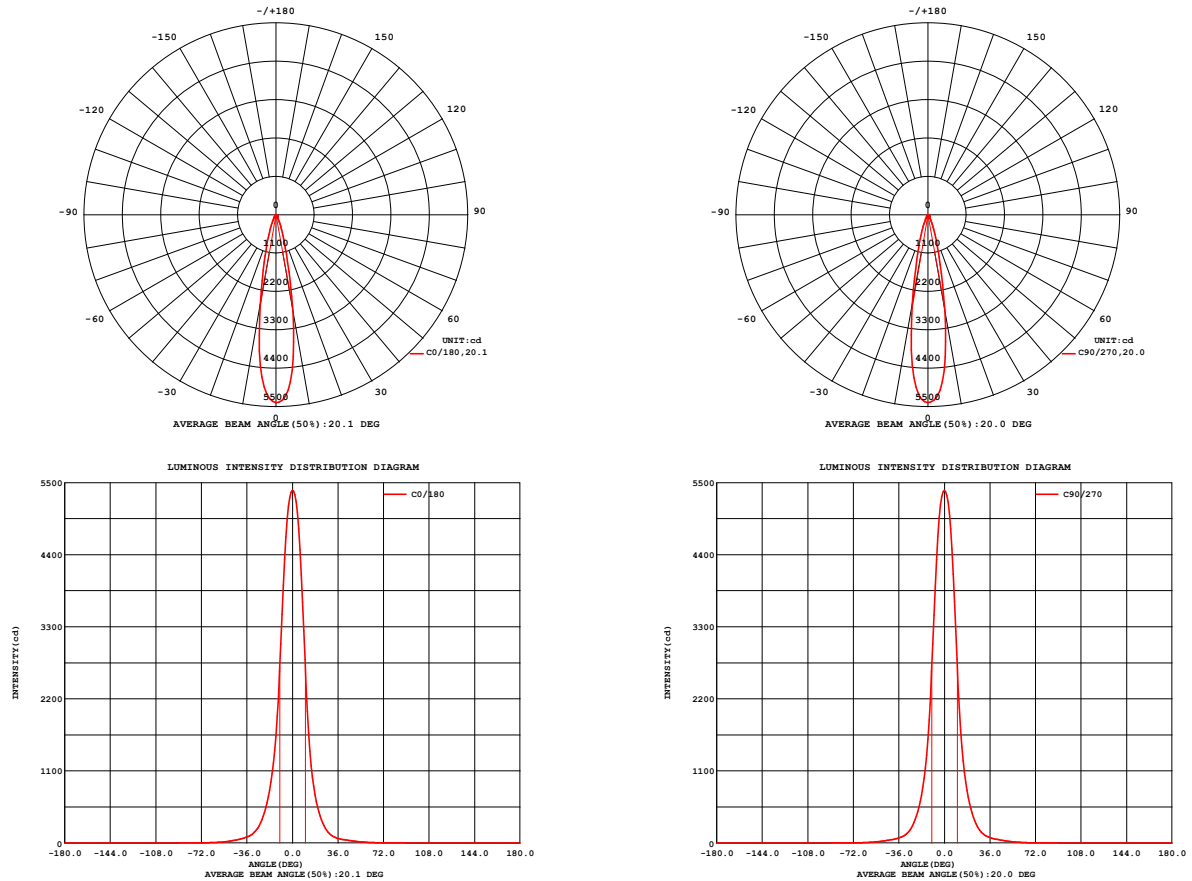


Fig. C0/C180

Fig. C90/C270

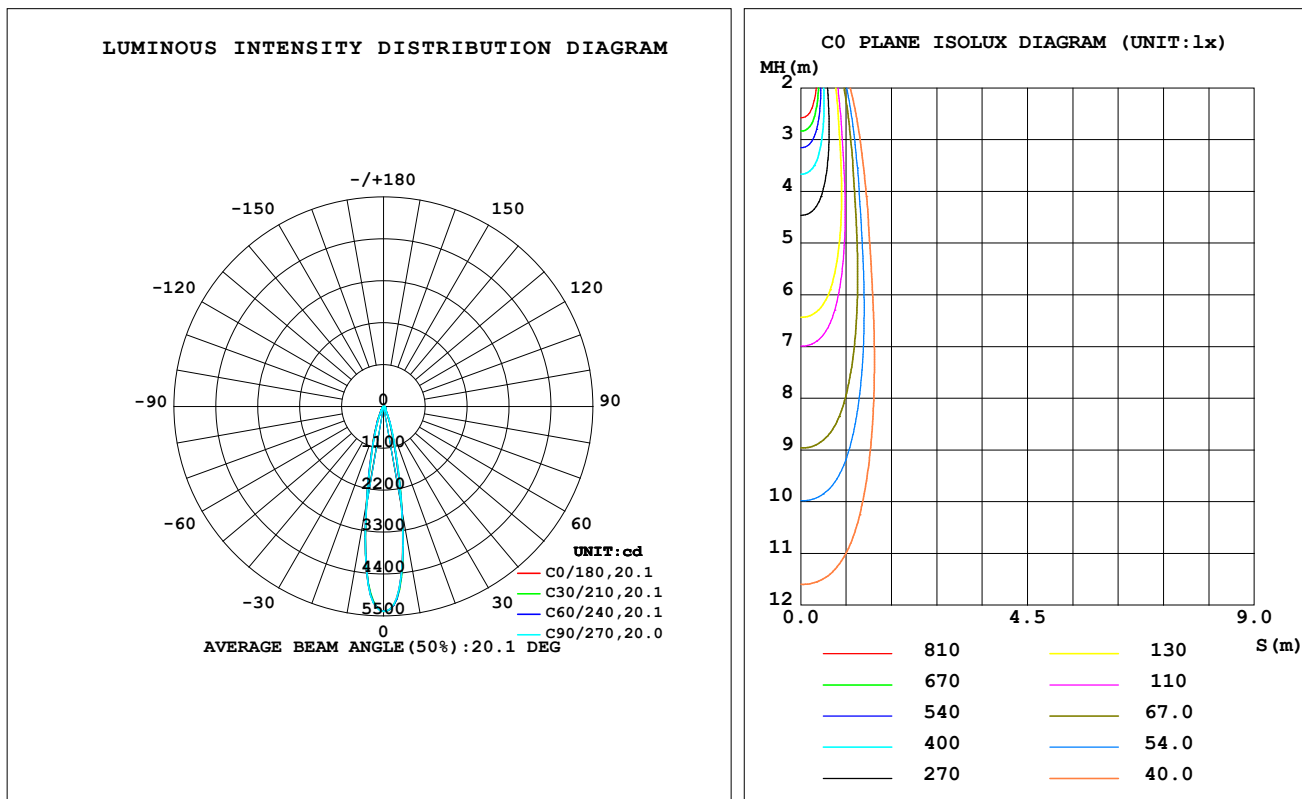
C Range: 0 - 360DEG
C Interval: For a lens beam angle of 15°
Test Speed: HIGH
Temperature: 77.54 °F
Operators: zoe
Test Date: 2024-8-23

γ Range: 0 - 180DEG
γ Interval: 1.0DEG
Test System: EVERFINE GO-SPEX500_V1 SYSTEM V2.00.461
Humidity: 65.0%
Test Distance: 124.409" [K=1.0000]
Remarks: LAMP: BXRH-30G10T0-G-83 Ra: 90
LENS: PM-1084 15R
NO DRIVER: 500mA
30minutes warm-up

LUMINAIRE PHOTOMETRIC TEST REPORT

Test:U:17.654V I:0.5000A P:8.8270W PF:1.0000 Freq:49.99Hz Lamp Flux:1124.6x1 lm		
NAME: CTL-MM-1.5-30K-15-SQ-AD-OPL	TYPE:	WEIGHT:
SPEC.: 3000K	DIM.:	SERIAL No.: 2408231152
MFR.: MERCURY LIGHTING	SUR.: 0.002601m2	Shielding Angle:

DATA OF LAMP		PHOTOMETRIC DATA Eff: 112.01 lm/W			
MODEL	Brideglux	I _{max} (cd)	5381	S/MH (C0/180)	0.34
NOMINAL POWER (W)	9	LOR (%)	87.9	S/MH (C90/270)	0.34
RATED VOLTAGE (V)	18	TOTAL FLUX (lm)	988.71	η UP, DN (C0-180)	0.0, 44.7
NOMINAL FLUX (lm)	1124.6	CIE CLASS	DIRECT	η UP, DN (C180-360)	0.0, 43.2
LAMPS INSIDE	1	η up (%)	0.0	CIBSE SHR NOM	0.00
TEST VOLTAGE (V)	18	η down (%)	87.9	CIBSE SHR MAX	0.30



C Range: 0 - 360DEG

C Interval: For a lens beam angle of 15°

Test Speed: HIGH

Temperature: 77.54 °F

Operators: zoe

Test Date: 2024-8-23

γ Range: 0 - 180DEG

γ Interval: 1.0DEG

Test System: EVERFINE GO-SPEX500_V1 SYSTEM V2.00.461

Humidity: 65.0%

Test Distance: 124.409" [K=1.0000]

Remarks: LAMP: BXRH-30G10T0-G-83 Ra: 90

LENS: PM-1084 15R

NO DRIVER: 500mA

30minutes warm-up

ZONAL FLUX DIAGRAM

ZONAL FLUX DIAGRAM:

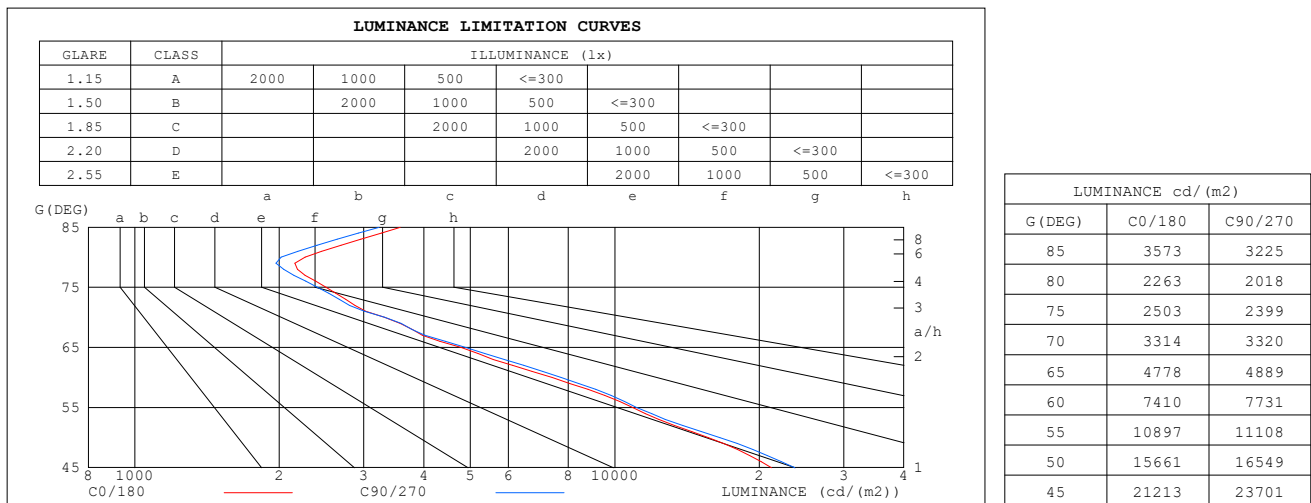
γ	C0	C45	C90	C135	C180	C225	C270	C315	γ	Φ zone	Φ total	%lum,lamp
10	2804	2837	2801	2693	2616	2590	2609	2714	0- 10	383.5	383.5	38.8,34.1
20	549.0	568.0	604.3	614.1	612.9	580.2	550.3	545.3	10- 20	352.5	736.0	74.4,65.4
30	131.1	139.4	150.9	156.8	161.6	149.8	135.1	128.2	20- 30	136.8	872.8	88.3,77.6
40	52.76	56.52	61.43	64.96	66.32	62.51	55.95	52.07	30- 40	56.54	929.3	94,82.6
50	26.19	30.63	27.66	32.97	26.75	31.57	25.76	30.16	40- 50	33.46	962.8	97.4,85.6
60	9.638	12.03	10.05	12.00	9.152	11.42	9.341	11.90	50- 60	16.98	979.8	99.1,87.1
70	2.948	3.619	2.953	3.391	2.603	3.111	2.558	3.439	60- 70	6.376	986.1	99.7,87.7
80	1.022	1.177	0.9113	0.9541	0.7209	0.8652	0.7988	1.094	70- 80	1.925	988.1	99.9,87.9
90	0	0	0	0	0	0	0	0	80- 90	0.6498	988.7	100,87.9
100	0	0	0	0	0	0	0	0	90-100	0	988.7	100,87.9
110	0	0	0	0	0	0	0	0	100-110	0	988.7	100,87.9
120	0	0	0	0	0	0	0	0	110-120	0	988.7	100,87.9
130	0	0	0	0	0	0	0	0	120-130	0	988.7	100,87.9
140	0	0	0	0	0	0	0	0	130-140	0	988.7	100,87.9
150	0	0	0	0	0	0	0	0	140-150	0	988.7	100,87.9
160	0	0	0	0	0	0	0	0	150-160	0	988.7	100,87.9
170	0	0	0	0	0	0	0	0	160-170	0	988.7	100,87.9
180	0	0	0	0	0	0	0	0	170-180	0	988.7	100,87.9
DEG	LUMINOUS INTENSITY:cd									UNIT:lm		

C Range: 0 - 360DEG
 C Interval:For a lens beam angle of 15°
 Test Speed: HIGH
 Temperature:77.54 ° F
 Operators:zoe
 Test Date:2024-8-23

γ Range: 0 - 180DEG
 γ Interval: 1.0DEG
 Test System:EVERFINE GO-SPEX500_V1 SYSTEM V2.00.461
 Humidity:65.0%
 Test Distance:124.409" [K=1.0000]
 Remarks: LAMP:BXRH-30G10T0-G-83 Ra:90
 LENS:PM-1084 15R
 NO DRIVER:500mA
 30minutes warm-up

LUMINANCE LIMITATION CURVES

Test:U:17.654V I:0.5000A P:8.8270W PF:1.0000 Freq:49.99Hz Lamp Flux:1124.6x1 lm		
NAME: CTL-MM-1.5-30K-15-SQ-AD-OPL	TYPE:	WEIGHT:
SPEC.: 3000K	DIM.:	SERIAL No.: 2408231152
MFR.: MERCURY LIGHTING	SUR.: 0.002601m2	Shielding Angle:



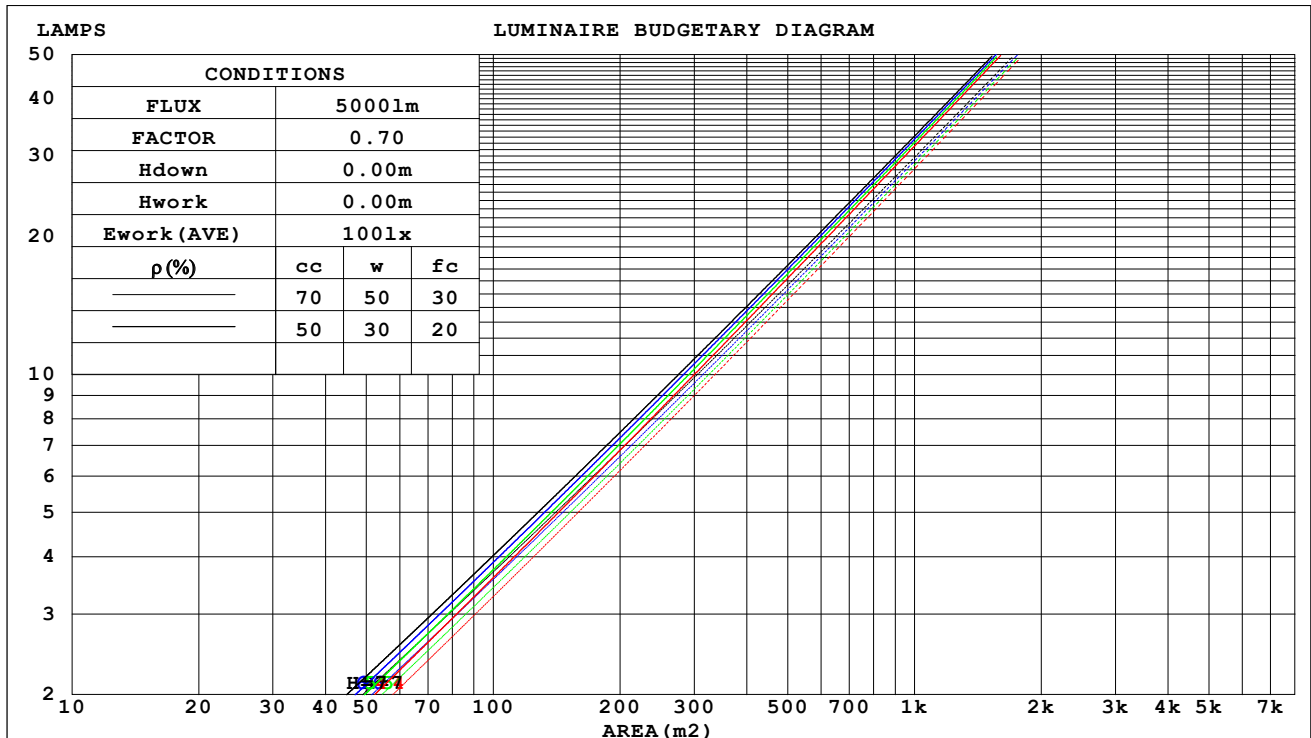
C Range: 0 - 360DEG
C Interval: For a lens beam angle of 15°
Test Speed: HIGH
Temperature: 77.54 °F
Operators: zoe
Test Date: 2024-8-23

γ Range: 0 - 180DEG
γ Interval: 1.0DEG
Test System: EVERFINE GO-SPEX500_V1 SYSTEM V2.00.461
Humidity: 65.0%
Test Distance: 124.409" [K=1.0000]
Remarks: LAMP: BXRH-30G10T0-G-83 Ra: 90
LENS: PM-1084 15R
NO DRIVER: 500mA
30minutes warm-up

CU AND LUMINAIRE BUDGETARY ESTIMATE DIAGRAM

Test:U:17.654V I:0.5000A P:8.8270W PF:1.0000 Freq:49.99Hz Lamp Flux:1124.6x1 lm		
NAME: CTL-MM-1.5-30K-15-SQ-AD-OPL	TYPE:	WEIGHT:
SPEC.: 3000K	DIM.:	SERIAL No.: 2408231152
MFR.: MERCURY LIGHTING	SUR.: 0.002601m2	Shielding Angle:

pcc	80%			70%			50%			30%			10%			0
pw	50%	30%	10%	50%	30%	10%	50%	30%	10%	50%	30%	10%	50%	30%	10%	0
pfc	20%			20%			20%			20%			20%			0
RCR	RCR:Room Cavity Ratio						Coefficients of Utilization(CU)									
0.0	1.05	1.05	1.05	1.02	1.02	1.02	.98	.98	.98	.94	.94	.94	.90	.90	.90	.88
1.0	.99	.97	.96	.97	.95	.94	.94	.92	.91	.90	.89	.88	.87	.87	.86	.84
2.0	.94	.91	.89	.92	.90	.88	.90	.88	.86	.87	.86	.84	.85	.83	.82	.81
3.0	.90	.86	.83	.88	.85	.83	.86	.84	.82	.84	.82	.80	.82	.81	.79	.78
4.0	.86	.82	.79	.85	.81	.79	.83	.80	.78	.81	.79	.77	.80	.78	.76	.75
5.0	.82	.79	.76	.82	.78	.75	.80	.77	.75	.79	.76	.74	.78	.75	.74	.73
6.0	.79	.76	.73	.79	.75	.73	.78	.74	.72	.76	.74	.72	.75	.73	.71	.70
7.0	.77	.73	.70	.76	.73	.70	.75	.72	.70	.74	.71	.69	.73	.71	.69	.68
8.0	.74	.70	.68	.74	.70	.68	.73	.70	.67	.72	.69	.67	.72	.69	.67	.66
9.0	.72	.68	.66	.72	.68	.66	.71	.68	.66	.70	.67	.65	.70	.67	.65	.64
10.0	.70	.66	.64	.70	.66	.64	.69	.66	.64	.69	.66	.64	.68	.65	.63	.63



C Range: 0 - 360DEG
 C Interval: For a lens beam angle of 15°
 Test Speed: HIGH
 Temperature: 77.54 °F
 Operators: zoe
 Test Date: 2024-8-23

γ Range: 0 - 180DEG
 γ Interval: 1.0DEG
 Test System: EVERFINE GO-SPEX500_V1 SYSTEM V2.00.461
 Humidity: 65.0%
 Test Distance: 124.409" [K=1.0000]
 Remarks: LAMP: BXRH-30G10T0-G-83 Ra: 90
 LENS: PM-1084 15R
 NO DRIVER: 500mA
 30minutes warm-up

WEC AND CCEC

Test:U:17.654V I:0.5000A P:8.8270W PF:1.0000 Freq:49.99Hz Lamp Flux:1124.6x1 lm		
NAME: CTL-MM-1.5-30K-15-SQ-AD-OPL	TYPE:	WEIGHT:
SPEC.: 3000K	DIM.:	SERIAL No.: 2408231152
MFR.: MERCURY LIGHTING	SUR.: 0.002601m2	Shielding Angle:

pcc	80%			70%			50%			30%			10%			0
pw	50%	30%	10%	50%	30%	10%	50%	30%	10%	50%	30%	10%	50%	30%	10%	0
pfc	20%			20%			20%			20%			20%			0
RCR	RCR:Room Cavity Ratio						Wall Exitance Coefficients(WEC)									
0.0																
1.0	.127	.072	.023	.121	.069	.022	.110	.063	.020	.100	.058	.019	.091	.053	.017	
2.0	.118	.065	.020	.114	.063	.019	.105	.058	.018	.096	.054	.017	.089	.050	.016	
3.0	.111	.059	.018	.107	.057	.017	.099	.054	.016	.092	.050	.015	.086	.047	.015	
4.0	.104	.054	.016	.100	.052	.016	.094	.050	.015	.088	.047	.014	.082	.045	.014	
5.0	.097	.050	.014	.095	.049	.014	.089	.046	.014	.084	.044	.013	.079	.042	.013	
6.0	.092	.046	.013	.090	.045	.013	.085	.043	.013	.080	.042	.012	.076	.040	.012	
7.0	.087	.043	.012	.085	.042	.012	.081	.041	.012	.077	.039	.011	.073	.038	.011	
8.0	.083	.040	.011	.081	.040	.011	.077	.039	.011	.074	.037	.011	.071	.036	.011	
9.0	.079	.038	.011	.077	.038	.011	.074	.037	.010	.071	.036	.010	.068	.035	.010	
10.0	.075	.036	.010	.074	.036	.010	.071	.035	.010	.068	.034	.010	.066	.033	.009	

pcc	80%			70%			50%			30%			10%			0
pw	50%	30%	10%	50%	30%	10%	50%	30%	10%	50%	30%	10%	50%	30%	10%	0
pfc	20%			20%			20%			20%			20%			0
RCR	RCR:Room Cavity Ratio						Ceiling Cavity Exitance Coefficients(CCEC)									
0.0	.167	.167	.167	.143	.143	.143	.098	.098	.098	.056	.056	.056	.018	.018	.018	
1.0	.148	.139	.130	.127	.119	.112	.087	.082	.077	.050	.047	.045	.016	.015	.015	
2.0	.133	.117	.103	.114	.100	.089	.078	.069	.062	.045	.040	.036	.014	.013	.012	
3.0	.120	.100	.083	.103	.086	.072	.071	.060	.051	.041	.035	.030	.013	.011	.010	
4.0	.109	.086	.068	.094	.074	.059	.065	.052	.042	.037	.030	.025	.012	.010	.008	
5.0	.100	.075	.057	.086	.065	.050	.059	.046	.035	.034	.027	.021	.011	.009	.007	
6.0	.093	.067	.048	.080	.058	.042	.055	.040	.030	.032	.024	.018	.010	.008	.006	
7.0	.086	.060	.041	.074	.052	.036	.051	.036	.025	.030	.021	.015	.010	.007	.005	
8.0	.080	.054	.036	.069	.047	.031	.048	.033	.022	.028	.019	.013	.009	.006	.004	
9.0	.075	.049	.031	.065	.042	.027	.045	.030	.019	.026	.018	.011	.008	.006	.004	
10.0	.071	.045	.027	.061	.039	.024	.042	.027	.017	.025	.016	.010	.008	.005	.003	

C Range: 0 - 360DEG

C Interval:For a lens beam angle of 15°

Test Speed: HIGH

Temperature:77.54 °F

Operators:zoe

Test Date:2024-8-23

γ Range: 0 - 180DEG

γ Interval: 1.0DEG

Test System:EVERFINE GO-SPEX500_V1 SYSTEM V2.00.461

Humidity:65.0%

Test Distance:124.409" [K=1.0000]

Remarks: LAMP:BXRH-30G10T0-G-83 Ra:90

LENS:PM-1084 15R

NO DRIVER:500mA

30minutes warm-up

UGR(Unified Glare Rating) Table

Test:U:17.654V I:0.5000A P:8.8270W PF:1.0000 Freq:49.99Hz Lamp Flux:1124.6x1 lm										
NAME: CTL-MM-1.5-30K-15-SQ-AD-OPL					TYPE:			WEIGHT:		
SPEC.: 3000K					DIM.:			SERIAL No.: 2408231152		
MFR.: MERCURY LIGHTING					SUR.: 0.002601m2			Shielding Angle:		
ceiling/cavity	0.7	0.7	0.5	0.5	0.3	0.7	0.7	0.5	0.5	0.3
walls	0.5	0.3	0.5	0.3	0.3	0.5	0.3	0.5	0.3	0.3
working plane	0.2	0.2	0.2	0.2	0.2	0.2	0.2	0.2	0.2	0.2
Room dimensions	Viewed crosswise					Viewed endwise				
x = 2H y = 2H	14.8	15.5	15.0	15.7	15.8	15.1	15.8	15.3	16.0	16.1
3H	14.9	15.5	15.1	15.7	15.9	15.2	15.8	15.4	16.0	16.2
4H	14.9	15.5	15.1	15.7	15.9	15.1	15.8	15.4	16.0	16.2
6H	14.8	15.4	15.1	15.6	15.9	15.1	15.7	15.4	15.9	16.1
8H	14.8	15.4	15.1	15.6	15.9	15.1	15.6	15.4	15.9	16.1
12H	14.8	15.3	15.1	15.6	15.9	15.0	15.6	15.4	15.9	16.1
4H 2H	14.9	15.5	15.2	15.7	15.9	15.2	15.8	15.4	16.0	16.2
3H	15.0	15.5	15.3	15.8	16.1	15.3	15.8	15.6	16.1	16.3
4H	15.0	15.5	15.3	15.8	16.1	15.2	15.7	15.6	16.0	16.3
6H	15.0	15.4	15.3	15.7	16.1	15.2	15.6	15.6	16.0	16.3
8H	15.0	15.4	15.3	15.7	16.1	15.2	15.6	15.6	15.9	16.3
12H	15.0	15.3	15.4	15.7	16.1	15.2	15.6	15.6	15.9	16.3
8H 4H	14.9	15.3	15.3	15.7	16.0	15.1	15.6	15.5	15.9	16.3
6H	14.9	15.2	15.3	15.6	16.0	15.1	15.5	15.5	15.9	16.3
8H	14.9	15.2	15.4	15.6	16.1	15.1	15.4	15.6	15.8	16.3
12H	15.0	15.2	15.4	15.7	16.1	15.1	15.4	15.6	15.8	16.3
12H 4H	14.9	15.2	15.3	15.6	16.0	15.1	15.5	15.5	15.8	16.2
6H	14.9	15.2	15.3	15.6	16.0	15.1	15.4	15.5	15.8	16.2
8H	14.9	15.1	15.4	15.6	16.1	15.1	15.4	15.6	15.8	16.3
Variations with the observer position at spacings(CIE Pub.117) :										
S = 1.0H	+ 1.2 / - 2.1					+ 1.4 / - 2.3				
1.5H	+ 1.0 / - 1.4					+ 1.6 / - 1.5				
2.0H	+ 2.5 / - 2.9					+ 2.8 / - 2.8				

CIE Pub.117, 1125 lm Total Lamp Luminous Flux Correct (8log(F/F0) = 0.4)
 Area: 0.002601 m2

C Range: 0 - 360DEG
 C Interval:For a lens beam angle of 15°
 Test Speed: HIGH
 Temperature:77.54 °F
 Operators:zoe
 Test Date:2024-8-23

γ Range: 0 - 180DEG
 γ Interval: 1.0DEG
 Test System:EVERFINE GO-SPEX500_V1 SYSTEM V2.00.461
 Humidity:65.0%
 Test Distance:124.409" [K=1.0000]
 Remarks: LAMP:BXRH-30G10T0-G-83 Ra:90
 LENS:PM-1084 15R
 NO DRIVER:500mA
 30minutes warm-up

UTILIZATION FACTORS TABLE

Test:U:17.654V I:0.5000A P:8.8270W PF:1.0000 Freq:49.99Hz Lamp Flux:1124.6x1 lm		
NAME: CTL-MM-1.5-30K-15-SQ-AD-OPL	TYPE:	WEIGHT:
SPEC.: 3000K	DIM.:	SERIAL No.: 2408231152
MFR.: MERCURY LIGHTING	SUR.: 0.002601m2	Shielding Angle:

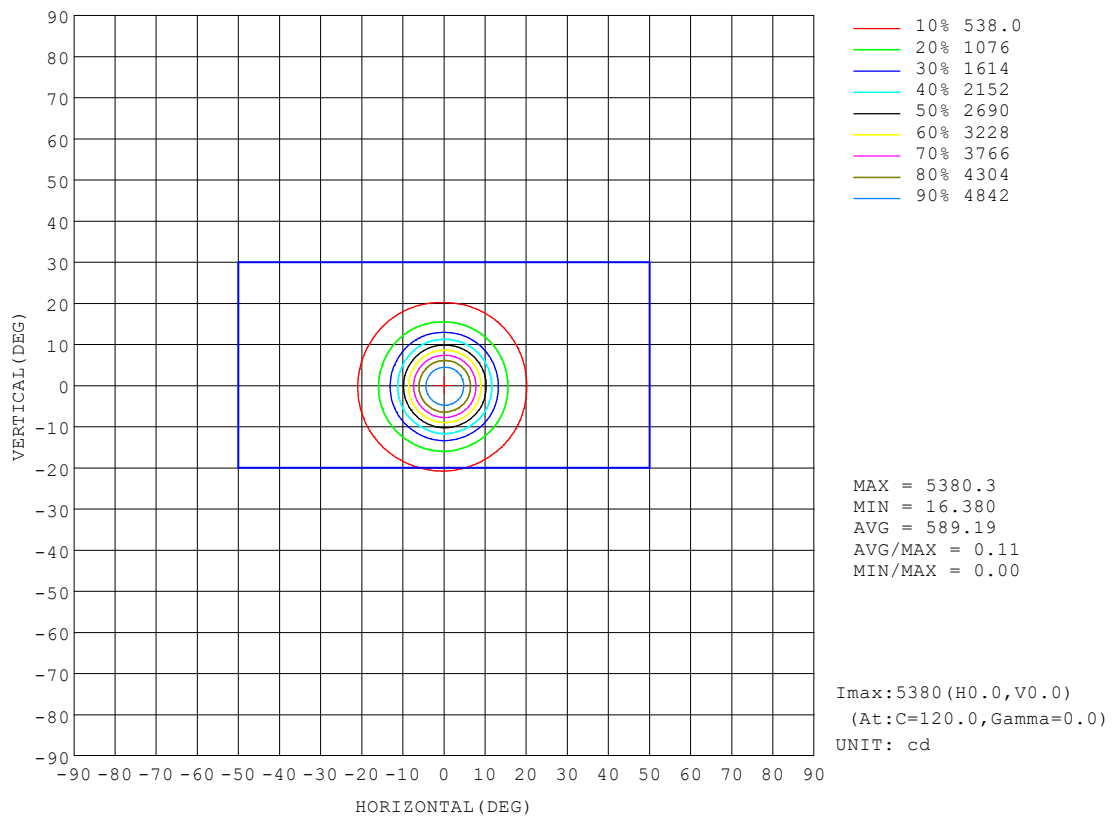
REFLECTANCE										
Ceiling	0.8	0.8	0.8	0.7	0.7	0.7	0.5	0.5	0.5	0
Walls	0.7	0.5	0.3	0.7	0.5	0.3	0.7	0.5	0.3	0
Working plane	0.2	0.2	0.2	0.2	0.2	0.2	0.2	0.2	0.2	0
ROOM INDEX	UTILIZATION FACTORS (PERCENT) $k(RI) \times RCR = 5$									
$k = 0.60$	77	72	68	77	71	68	76	71	68	65
0.80	84	79	75	83	78	75	82	78	75	72
1.00	87	83	79	87	82	79	85	82	79	75
1.25	91	86	83	90	86	83	88	85	82	79
1.50	93	89	86	92	89	86	90	87	85	81
2.00	96	92	89	94	91	89	92	89	87	83
2.50	97	94	91	96	93	90	93	91	89	84
3.00	98	95	93	97	94	92	94	92	90	85
4.00	100	98	96	98	96	95	95	94	92	86
5.00	101	99	98	99	98	96	96	95	94	87
ROOM INDEX	UF(total)									Direct
According to DIN EN 13032-2 2004			Suspended					SHRNOM = 1.25		

C Range: 0 - 360DEG
 C Interval: For a lens beam angle of 15°
 Test Speed: HIGH
 Temperature: 77.54 °F
 Operators: zoe
 Test Date: 2024-8-23

γ Range: 0 - 180DEG
 γ Interval: 1.0DEG
 Test System: EVERFINE GO-SPEX500_V1 SYSTEM V2.00.461
 Humidity: 65.0%
 Test Distance: 124.409" [K=1.0000]
 Remarks: LAMP: BXRH-30G10T0-G-83 Ra:90
 LENS: PM-1084 15R
 NO DRIVER: 500mA
 30minutes warm-up

ISOCANDELA DIAGRAM

Test:U:17.654V I:0.5000A P:8.8270W PF:1.0000 Freq:49.99Hz Lamp Flux:1124.6x1 lm		
NAME: CTL-MM-1.5-30K-15-SQ-AD-OPL	TYPE:	WEIGHT:
SPEC.: 3000K	DIM.:	SERIAL No.: 2408231152
MFR.: MERCURY LIGHTING	SUR.: 0.002601m2	Shielding Angle:



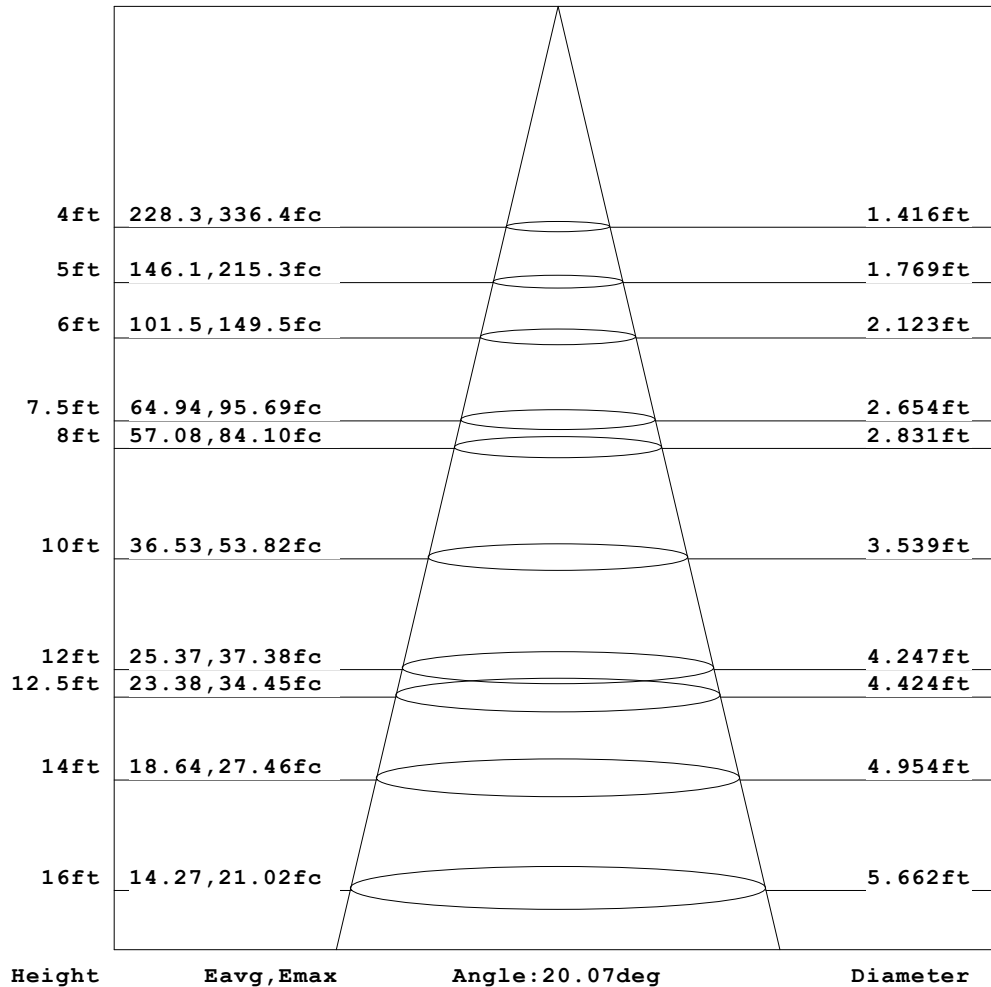
C Range: 0 - 360DEG
 C Interval: For a lens beam angle of 15°
 Test Speed: HIGH
 Temperature: 77.54 °F
 Operators: zoe
 Test Date: 2024-8-23

γ Range: 0 - 180DEG
 γ Interval: 1.0DEG
 Test System: EVERFINE GO-SPEX500_V1 SYSTEM V2.00.461
 Humidity: 65.0%
 Test Distance: 124.409" [K=1.0000]
 Remarks: LAMP: BXRH-30G10T0-G-83 Ra: 90
 LENS: PM-1084 15R
 NO DRIVER: 500mA
 30minutes warm-up

AAI Figure

Test:U:17.654V I:0.5000A P:8.8270W PF:1.0000 Freq:49.99Hz Lamp Flux:1124.6x1 lm		
NAME: CTL-MM-1.5-30K-15-SQ-AD-OPL	TYPE:	WEIGHT:
SPEC.: 3000K	DIM.:	SERIAL No.: 2408231152
MFR.: MERCURY LIGHTING	SUR.: 0.002601m2	Shielding Angle:

Flux out:433.6 lm



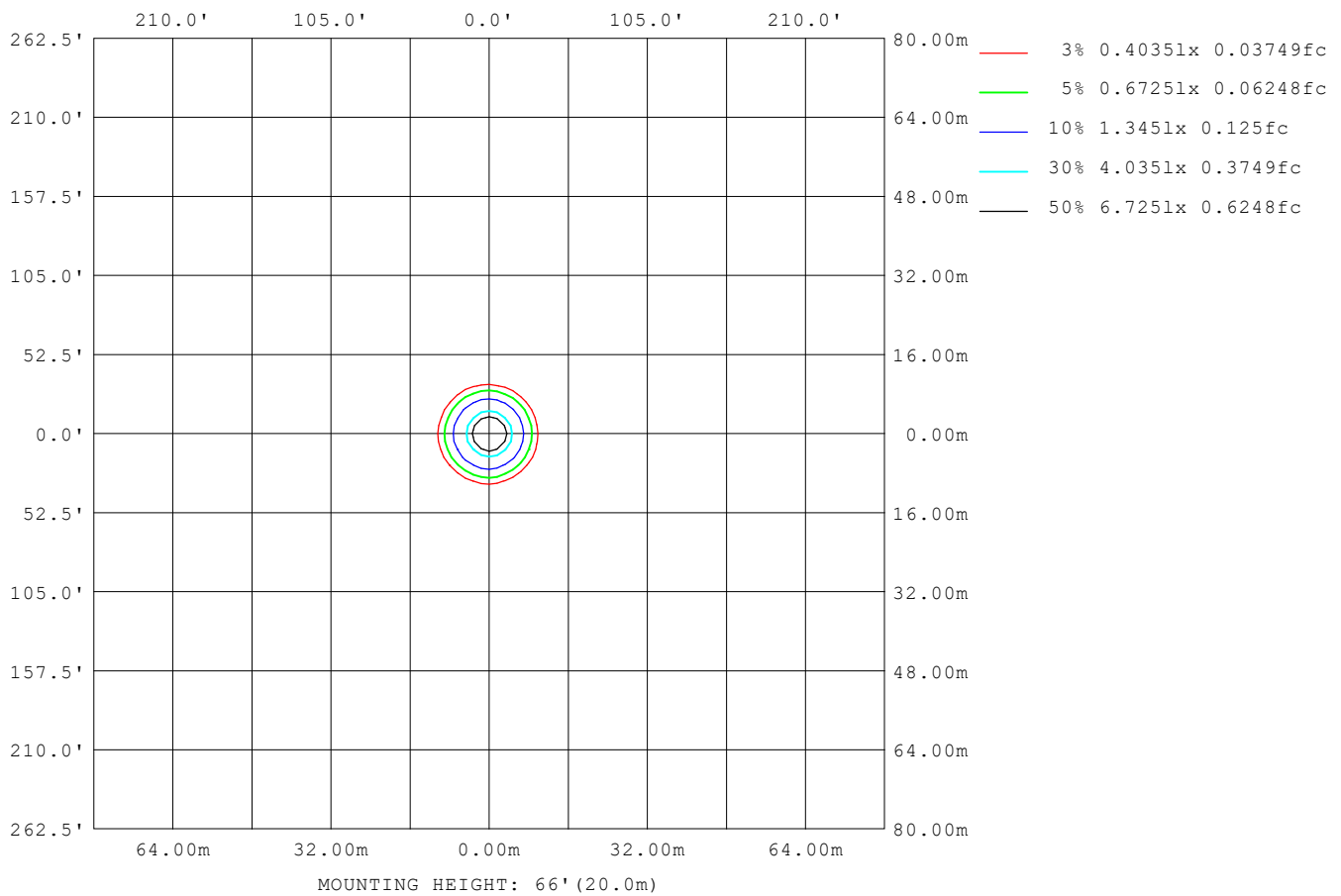
Note: The Curves indicate the illuminated area and the average illumination when the luminaire is at different distance.

C Range: 0 - 360DEG
 C Interval: For a lens beam angle of 15°
 Test Speed: HIGH
 Temperature: 77.54 °F
 Operators: zoe
 Test Date: 2024-8-23

γ Range: 0 - 180DEG
 γ Interval: 1.0DEG
 Test System: EVERFINE GO-SPEX500_V1 SYSTEM V2.00.461
 Humidity: 65.0%
 Test Distance: 124.409" [K=1.0000]
 Remarks: LAMP: BXRH-30G10T0-G-83 Ra:90
 LENS: PM-1084 15R
 NO DRIVER: 500mA
 30minutes warm-up

ISOLUX DIAGRAM

Test:U:17.654V I:0.5000A P:8.8270W PF:1.0000 Freq:49.99Hz Lamp Flux:1124.6x1 lm		
NAME: CTL-MM-1.5-30K-15-SQ-AD-OPL	TYPE:	WEIGHT:
SPEC.: 3000K	DIM.:	SERIAL No.: 2408231152
MFR.: MERCURY LIGHTING	SUR.: 0.002601m2	Shielding Angle:



C Range: 0 - 360DEG
 C Interval: For a lens beam angle of 15°
 Test Speed: HIGH
 Temperature: 77.54 °F
 Operators: zoe
 Test Date: 2024-8-23

γ Range: 0 - 180DEG
 γ Interval: 1.0DEG
 Test System: EVERFINE GO-SPEX500_V1 SYSTEM V2.00.461
 Humidity: 65.0%
 Test Distance: 124.409" [K=1.0000]
 Remarks: LAMP: BXRH-30G10T0-G-83 Ra: 90
 LENS: PM-1084 15R
 NO DRIVER: 500mA
 30minutes warm-up

LED Avg.L Report

Test:U:17.654V I:0.5000A P:8.8270W PF:1.0000 Freq:49.99Hz Lamp Flux:1124.6x1 lm		
NAME: CTL-MM-1.5-30K-15-SQ-AD-OPL	TYPE:	WEIGHT:
SPEC.: 3000K	DIM.:	SERIAL No.: 2408231152
MFR.: MERCURY LIGHTING	SUR.: 0.002601m2	Shielding Angle:

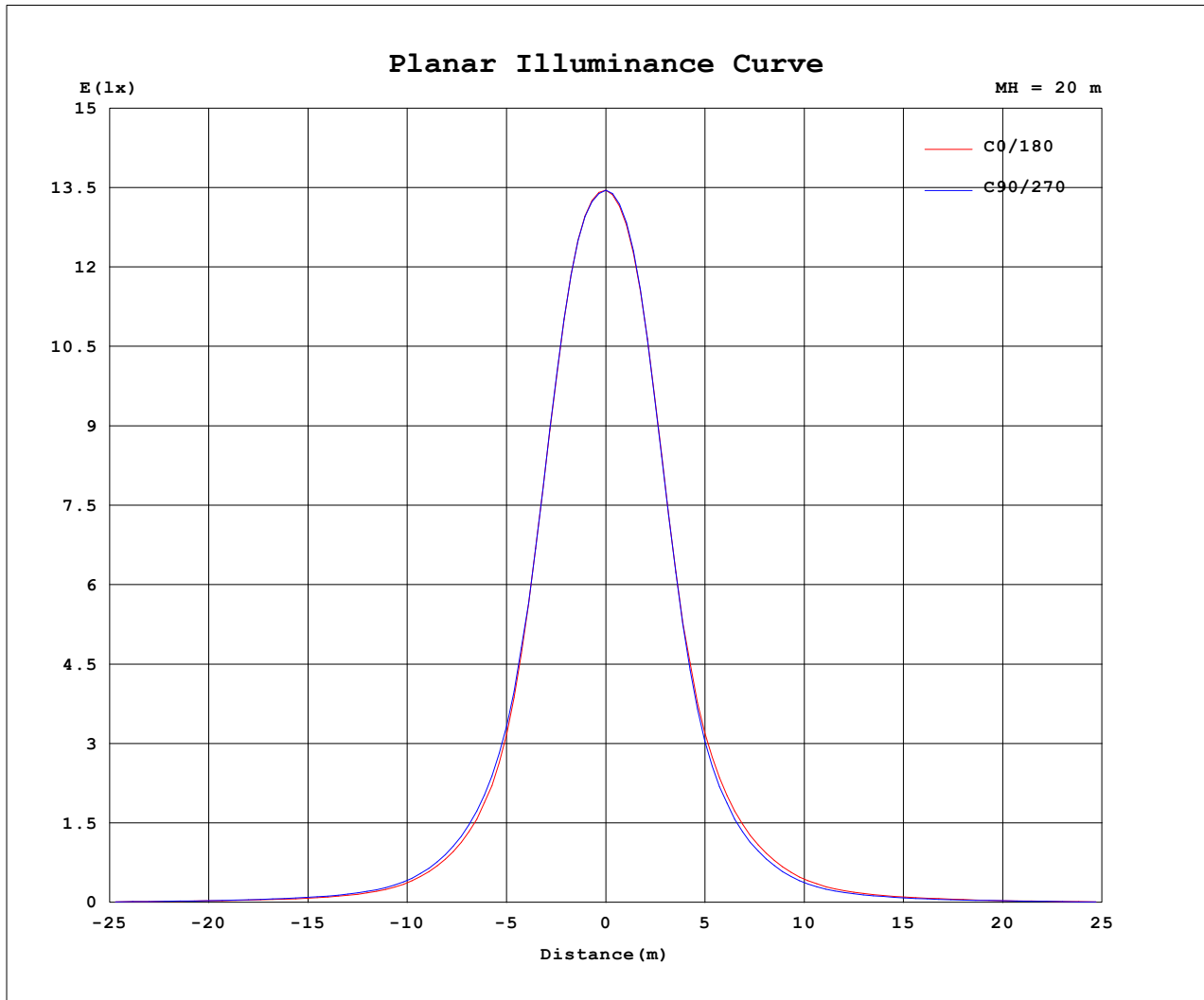
AvgL	cd/m2
L_0~180 (65) av	4623
L_0~180 (75) av	2246
L_0~180 (85) av	2982
L_90~270 (65) av	4653
L_90~270 (75) av	2227
L_90~270 (85) av	2899
L_45 (65) av	6232
L_45 (75) av	2751
L_45 (85) av	3080

Standard: GB/T 29293-2012

C Range: 0 - 360DEG
 C Interval: For a lens beam angle of 15°
 Test Speed: HIGH
 Temperature: 77.54 °F
 Operators: zoe
 Test Date: 2024-8-23

γ Range: 0 - 180DEG
 γ Interval: 1.0DEG
 Test System: EVERFINE GO-SPEX500_V1 SYSTEM V2.00.461
 Humidity: 65.0%
 Test Distance: 124.409" [K=1.0000]
 Remarks: LAMP: BXRH-30G10T0-G-83 Ra: 90
 LENS: PM-1084 15R
 NO DRIVER: 500mA
 30minutes warm-up

Planar Illuminance Curve



C Range: 0 - 360DEG
C Interval: For a lens beam angle of 15°
Test Speed: HIGH
Temperature: 77.54 °F
Operators: zoe
Test Date: 2024-8-23

γ Range: 0 - 180DEG
γ Interval: 1.0DEG
Test System: EVERFINE GO-SPEX500_V1 SYSTEM V2.00.461
Humidity: 65.0%
Test Distance: 124.409" [K=1.0000]
Remarks: LAMP: BXRH-30G10T0-G-83 Ra: 90
LENS: PM-1084 15R
NO DRIVER: 500mA
30minutes warm-up

LUMINOUS DISTRIBUTION INTENSITY DATA

Test:U:17.654V I:0.5000A P:8.8270W PF:1.0000 Freq:49.99Hz Lamp Flux:1124.6x1 lm		
NAME: CTL-MM-1.5-30K-15-SQ-AD-OPL	TYPE:	WEIGHT:
SPEC.: 3000K	DIM.:	SERIAL No.: 2408231152
MFR.: MERCURY LIGHTING	SUR.: 0.002601m2	Shielding Angle:

Table--1

UNIT: cd

C (DEG) γ (DEG)	0	30	60	90	120	150	180	210	240	270	300	330						
0	5381	5381	5381	5381	5381	5381	5381	5381	5381	5381	5381	5381						
5	4799	4828	4812	4794	4750	4712	4673	4643	4665	4681	4735	4770						
10	2804	2850	2824	2801	2721	2665	2616	2579	2602	2609	2681	2747						
15	1174	1216	1224	1253	1239	1238	1220	1187	1181	1145	1149	1151						
20	549	563	573	604	608	620	613	586	574	550	547	543						
25	265	272	279	295	297	310	308	293	282	265	260	259						
30	131	136	142	151	153	161	162	153	146	135	129	128						
35	78.1	80.9	85.9	91.4	93.5	98.3	98.0	93.6	89.5	83.4	78.2	76.7						
40	52.8	55.1	57.9	61.4	63.5	66.4	66.3	64.2	60.8	56.0	52.4	51.7						
45	39.0	41.6	43.0	43.6	47.2	48.0	43.9	46.6	44.5	40.0	41.2	40.4						
50	26.2	30.5	30.8	27.7	33.2	32.8	26.8	32.0	31.1	25.8	30.4	29.9						
55	16.3	20.0	19.4	16.6	20.8	19.5	15.7	19.5	18.8	15.9	19.8	19.2						
60	9.64	12.1	11.9	10.1	12.4	11.6	9.15	11.5	11.4	9.34	12.0	11.8						
65	5.25	6.91	6.88	5.37	7.11	6.45	4.91	6.26	6.21	4.86	6.81	6.60						
70	2.95	3.65	3.58	2.95	3.53	3.25	2.60	3.14	3.08	2.56	3.38	3.50						
75	1.69	2.04	1.99	1.61	1.84	1.67	1.34	1.61	1.61	1.38	1.81	1.96						
80	1.02	1.20	1.15	0.91	1.02	0.89	0.72	0.86	0.87	0.80	1.03	1.16						
85	0.81	0.85	0.82	0.73	0.69	0.58	0.54	0.54	0.58	0.58	0.68	0.83						
90	0.00	0.00	0.00	0.00	0.00	0.00	0.00	0.00	0.00	0.00	0.00	0.00						
95	0.00	0.00	0.00	0.00	0.00	0.00	0.00	0.00	0.00	0.00	0.00	0.00						
100	0.00	0.00	0.00	0.00	0.00	0.00	0.00	0.00	0.00	0.00	0.00	0.00						
105	0.00	0.00	0.00	0.00	0.00	0.00	0.00	0.00	0.00	0.00	0.00	0.00						
110	0.00	0.00	0.00	0.00	0.00	0.00	0.00	0.00	0.00	0.00	0.00	0.00						
115	0.00	0.00	0.00	0.00	0.00	0.00	0.00	0.00	0.00	0.00	0.00	0.00						
120	0.00	0.00	0.00	0.00	0.00	0.00	0.00	0.00	0.00	0.00	0.00	0.00						
125	0.00	0.00	0.00	0.00	0.00	0.00	0.00	0.00	0.00	0.00	0.00	0.00						
130	0.00	0.00	0.00	0.00	0.00	0.00	0.00	0.00	0.00	0.00	0.00	0.00						
135	0.00	0.00	0.00	0.00	0.00	0.00	0.00	0.00	0.00	0.00	0.00	0.00						
140	0.00	0.00	0.00	0.00	0.00	0.00	0.00	0.00	0.00	0.00	0.00	0.00						
145	0.00	0.00	0.00	0.00	0.00	0.00	0.00	0.00	0.00	0.00	0.00	0.00						
150	0.00	0.00	0.00	0.00	0.00	0.00	0.00	0.00	0.00	0.00	0.00	0.00						
155	0.00	0.00	0.00	0.00	0.00	0.00	0.00	0.00	0.00	0.00	0.00	0.00						
160	0.00	0.00	0.00	0.00	0.00	0.00	0.00	0.00	0.00	0.00	0.00	0.00						
165	0.00	0.00	0.00	0.00	0.00	0.00	0.00	0.00	0.00	0.00	0.00	0.00						
170	0.00	0.00	0.00	0.00	0.00	0.00	0.00	0.00	0.00	0.00	0.00	0.00						
175	0.00	0.00	0.00	0.00	0.00	0.00	0.00	0.00	0.00	0.00	0.00	0.00						
180	0.00	0.00	0.00	0.00	0.00	0.00	0.00	0.00	0.00	0.00	0.00	0.00						

C Range: 0 - 360DEG

C Interval: For a lens beam angle of 15°

Test Speed: HIGH

Temperature: 77.54 °F

Operators: zoe

Test Date: 2024-8-23

γ Range: 0 - 180DEG

γ Interval: 1.0DEG

Test System: EVERFINE GO-SPEX500_V1 SYSTEM V2.00.461

Humidity: 65.0%

Test Distance: 124.409" [K=1.0000]

Remarks: LAMP: BXRH-30G10T0-G-83 Ra: 90

LENS: PM-1084 15R

NO DRIVER: 500mA

30minutes warm-up