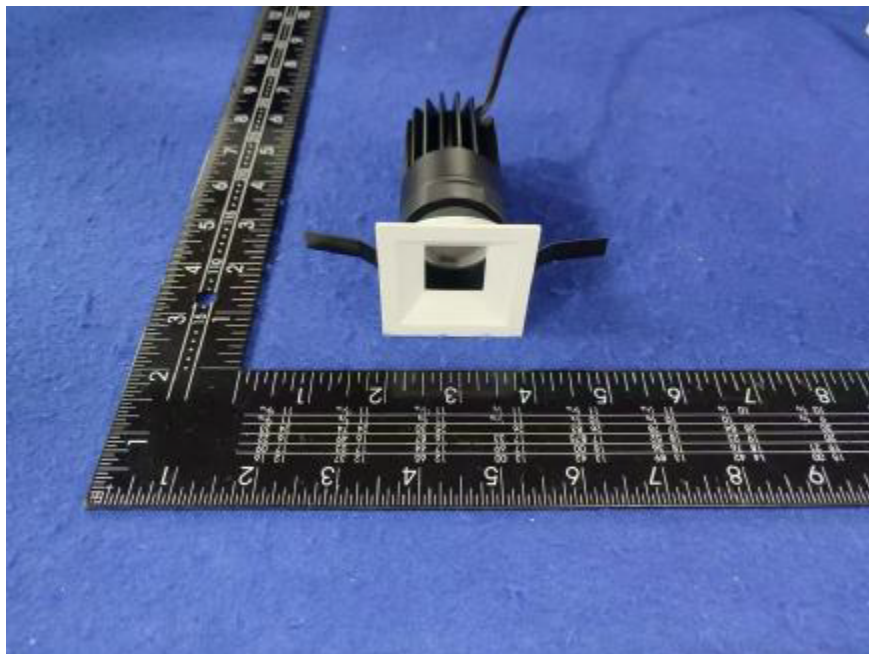


Photometric report for Flanged and Flangeless Trim



Light Output Ratio:	67.7%	
Luminaire Power:	8.82 W	
SHR Nominal:	0.75	Calculated using the TM5
SHR Maximum:	0.80	fine grid method.

C Range: 0 - 360DEG  
C Interval: For a lens beam angle of 60°  
Test Speed: HIGH  
Temperature: 25.3  
Operators: zoe  
Test Date: 2024-8-20

Range: 0 - 180DEG  
Interval: 1.0DEG  
Test System: EVERFINE GO-SPEX500\_V1 SYSTEM V2.00.461  
Humidity: 65.0%  
Test Distance: 3.160m [K=1.0000]  
Remarks: LAMP: BXRH-30G10T0-G-83 Ra: 90  
LENS: PM-1084C 50R  
NO DRIVER: 500mA  
30minutes warm-up

LUMINOUS INTENSITY DISTRIBUTION DIAGRAM

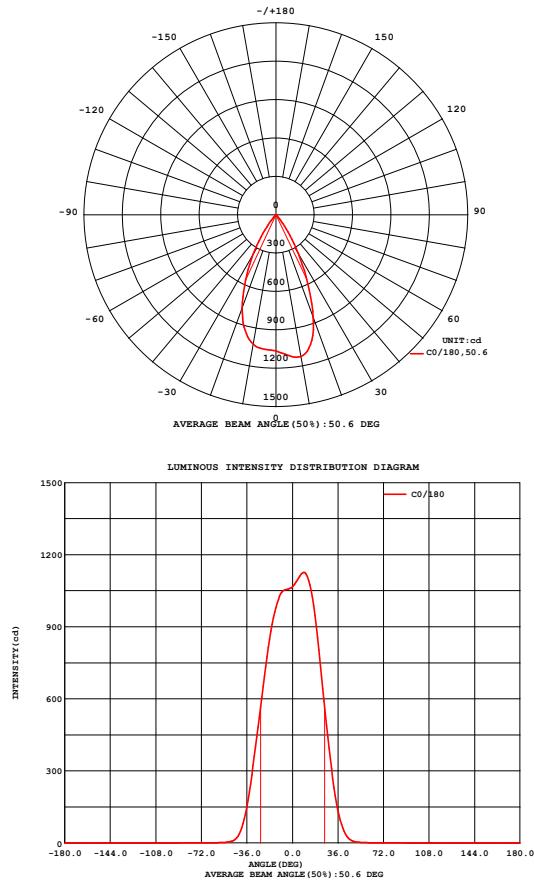


Fig. C0/C180

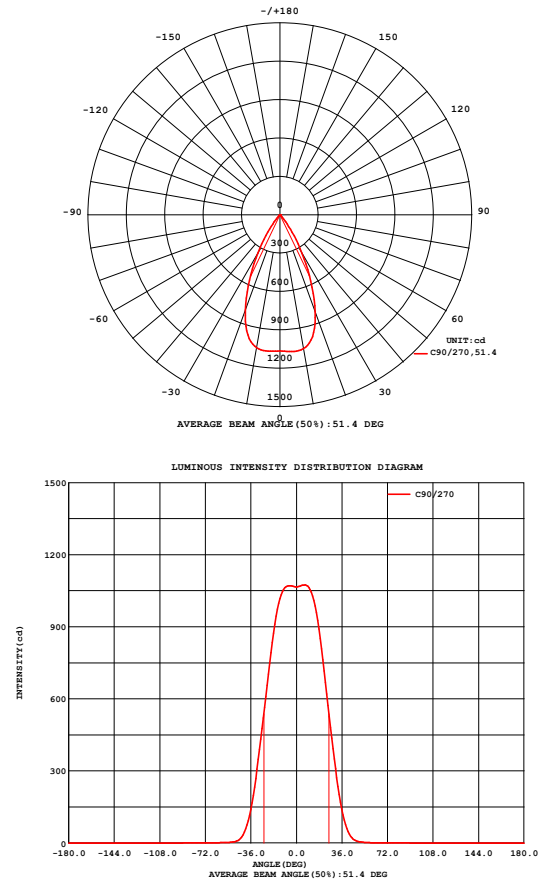


Fig. C90/C270

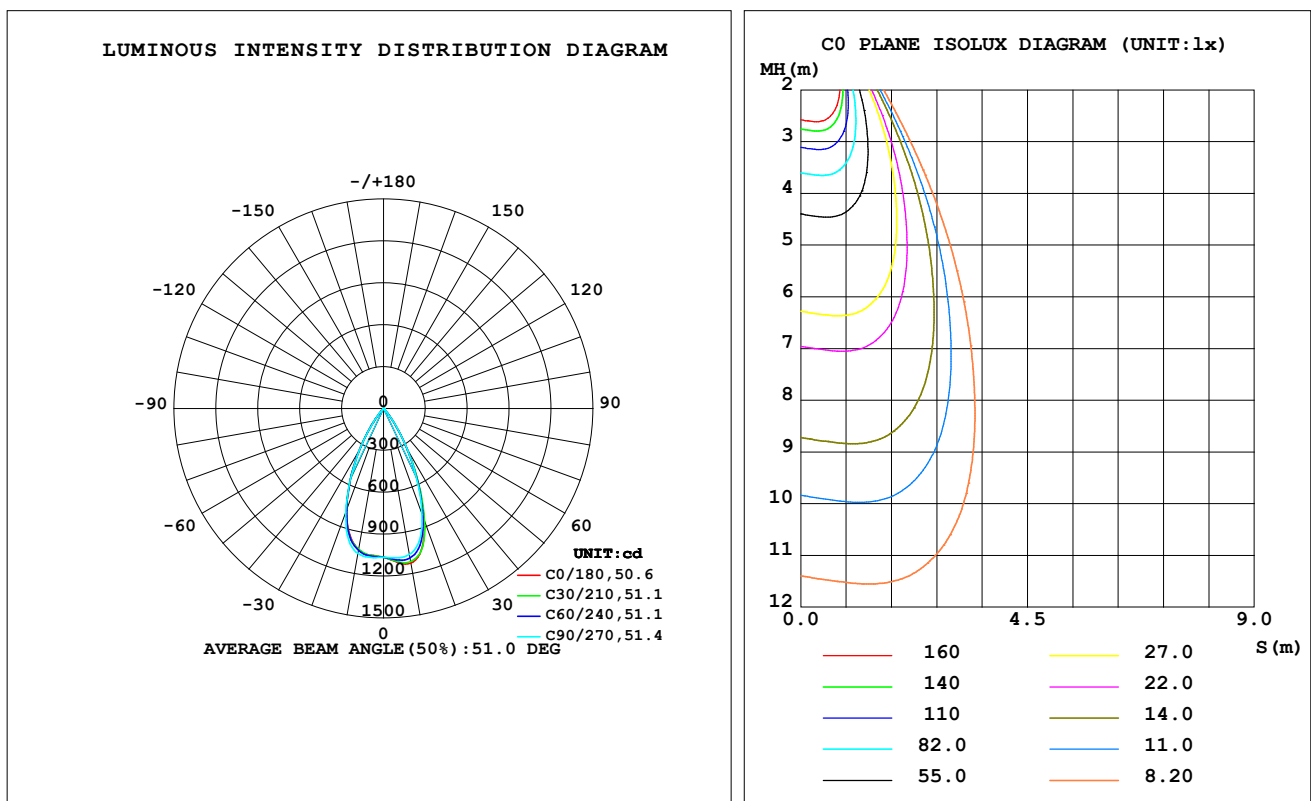
C Range: 0 - 360DEG  
C Interval: For a lens beam angle of 60°  
Test Speed: HIGH  
Temperature:25.3  
Operators:zoe  
Test Date:2024-8-20

Range: 0 - 180DEG  
Interval: 1.0DEG  
Test System:EVERFINE GO-SPEX500\_V1 SYSTEM V2.00.461  
Humidity:65.0%  
Test Distance:3.160m [K=1.0000]  
Remarks: LAMP:BXRH-30G10T0-G-83 Ra:90  
LENS:PM-1084C 50R  
NO DRIVER:500mA  
30minutes warm-up

## LUMINAIRE PHOTOMETRIC TEST REPORT

Test:U:17.640V I:0.5000A P:8.8200W PF:1.0000 Freq:49.99Hz Lamp Flux:1124.6x1 lm		
NAME: CTL-M-1.5-30K-60-SQ-AD	TYPE:	WEIGHT:
SPEC.: 3000K	DIM.:	SERIAL No.: 2408201134
MFR.: MERCURY LIGHTING	SUR.: 0.0016m2	Shielding Angle:

DATA OF LAMP		PHOTOMETRIC DATA Eff: 86.35 lm/W			
MODEL	Brideglux	I <sub>max</sub> (cd)	1126	S/MH (C0/180)	0.79
NOMINAL POWER (W)	9	LOR (%)	67.7	S/MH (C90/270)	0.78
RATED VOLTAGE (V)	18	TOTAL FLUX (lm)	761.58	☒ UP, DN (C0-180)	0.0, 34.1
NOMINAL FLUX (lm)	1124.6	CIE CLASS	DIRECT	☒ UP, DN (C180-360)	0.0, 33.6
LAMPS INSIDE	1	☒ up (%)	0.0	CIBSE SHR NOM	0.75
TEST VOLTAGE (V)	18	☒ down (%)	67.7	CIBSE SHR MAX	0.80



C Range: 0 - 360DEG

C Interval: For a lens beam angle of 60°

Test Speed: HIGH

Temperature: 25.3

Operators: zoe

Test Date: 2024-8-20

Range: 0 - 180DEG

Interval: 1.0DEG

Test System: EVERFINE GO-SPEX500\_V1 SYSTEM V2.00.461

Humidity: 65.0%

Test Distance: 3.160m [K=1.0000]

Remarks: LAMP: BXRH-30G10T0-G-83 Ra: 90

LENS: PM-1084C 50R

NO DRIVER: 500mA

30minutes warm-up

## ZONAL FLUX DIAGRAM

### ZONAL FLUX DIAGRAM:

°	C0	C45	C90	C135	C180	C225	C270	C315	°	zone	total	%lum,lamp
10	1125	1100	1063	1038	1027	1028	1055	1098	0- 10	102.5	102.5	13.5,9.11
20	854.6	845.1	808.3	786.8	775.2	778.5	791.6	843.3	10- 20	271.6	374.1	49.1,33.3
30	351.4	347.0	349.8	345.6	360.4	354.0	348.3	345.7	20- 30	260.9	635.0	83.4,56.5
40	61.42	52.00	60.55	51.66	62.83	49.36	58.84	49.31	30- 40	109.3	744.4	97.7,66.2
50	4.774	4.086	4.865	3.886	4.402	3.583	4.240	3.704	40- 50	13.63	758.0	99.5,67.4
60	1.279	1.258	1.251	1.192	1.221	1.188	1.382	1.867	50- 60	1.863	759.8	99.8,67.6
70	0.7755	0.9389	1.200	1.361	1.068	0.8448	0.7820	0.9756	60- 70	1.149	761.0	99.9,67.7
80	0.1138	0.0927	0.0876	0.0762	0.0848	0.0931	0.1340	0.1863	70- 80	0.5267	761.5	100,67.7
90	0	0	0	0	0	0	0	0	80- 90	0.0652	761.6	100,67.7
100	0	0	0	0	0	0	0	0	90-100	0	761.6	100,67.7
110	0	0	0	0	0	0	0	0	100-110	0	761.6	100,67.7
120	0	0	0	0	0	0	0	0	110-120	0	761.6	100,67.7
130	0	0	0	0	0	0	0	0	120-130	0	761.6	100,67.7
140	0	0	0	0	0	0	0	0	130-140	0	761.6	100,67.7
150	0	0	0	0	0	0	0	0	140-150	0	761.6	100,67.7
160	0	0	0	0	0	0	0	0	150-160	0	761.6	100,67.7
170	0	0	0	0	0	0	0	0	160-170	0	761.6	100,67.7
180	0	0	0	0	0	0	0	0	170-180	0	761.6	100,67.7
DEG	LUMINOUS INTENSITY:cd									UNIT:lm		

C Range: 0 - 360DEG

C Interval: For a lens beam angle of 60°

Test Speed: HIGH

Temperature:25.3

Operators:zoe

Test Date:2024-8-20

Range: 0 - 180DEG

Interval: 1.0DEG

Test System:EVERFINE GO-SPEX500\_V1 SYSTEM V2.00.461

Humidity:65.0%

Test Distance:3.160m [K=1.0000]

Remarks: LAMP:BXRH-30G10T0-G-83 Ra:90

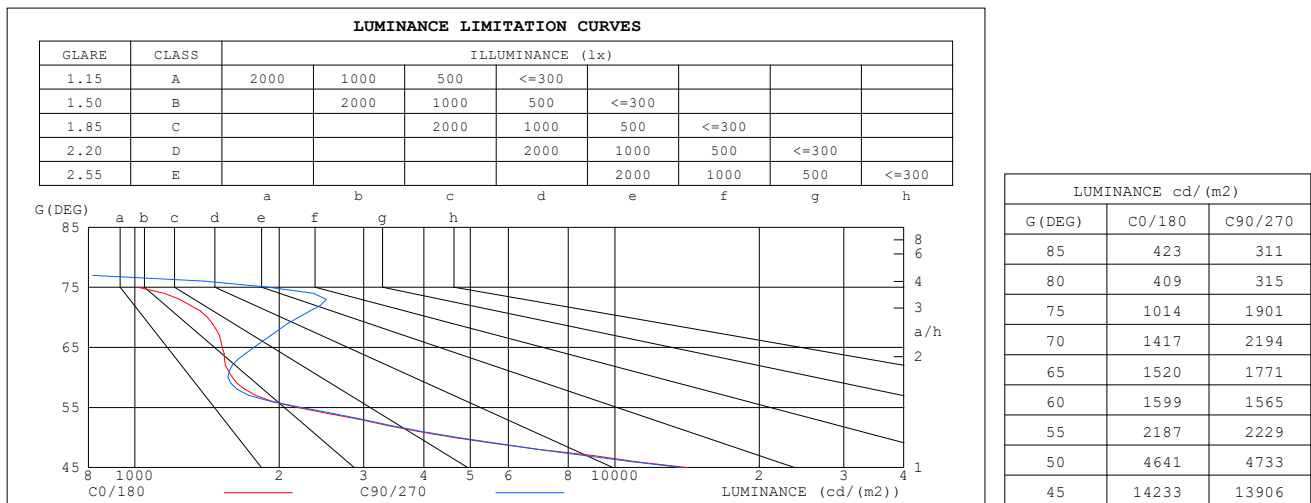
LENS:PM-1084C 50R

NO DRIVER:500mA

30minutes warm-up

**LUMINANCE LIMITATION CURVES**

<b>Test:</b> U:17.640V I:0.5000A P:8.8200W PF:1.0000 Freq:49.99Hz <b>Lamp Flux:</b> 1124.6x1 lm		
<b>NAME:</b> CTL-M-1.5-30K-60-SQ-AD	<b>TYPE:</b>	<b>WEIGHT:</b>
<b>SPEC.:</b> 3000K	<b>DIM.:</b>	<b>SERIAL No.:</b> 2408201134
<b>MFR.:</b> MERCURY LIGHTING	<b>SUR.:</b> 0.0016m <sup>2</sup>	<b>Shielding Angle:</b>


**C Range:** 0 - 360DEG

**C Interval:** For a lens beam angle of 60°

**Test Speed:** HIGH

**Temperature:** 25.3

**Operators:** zoe

**Test Date:** 2024-8-20

**Range:** 0 - 180DEG

**Interval:** 1.0DEG

**Test System:** EVERFINE GO-SPEX500\_V1 SYSTEM V2.00.461

**Humidity:** 65.0%

**Test Distance:** 3.160m [K=1.0000]

**Remarks:** LAMP: BXRH-30G10T0-G-83 Ra:90

**LENS:** PM-1084C 50R

**NO DRIVER:** 500mA

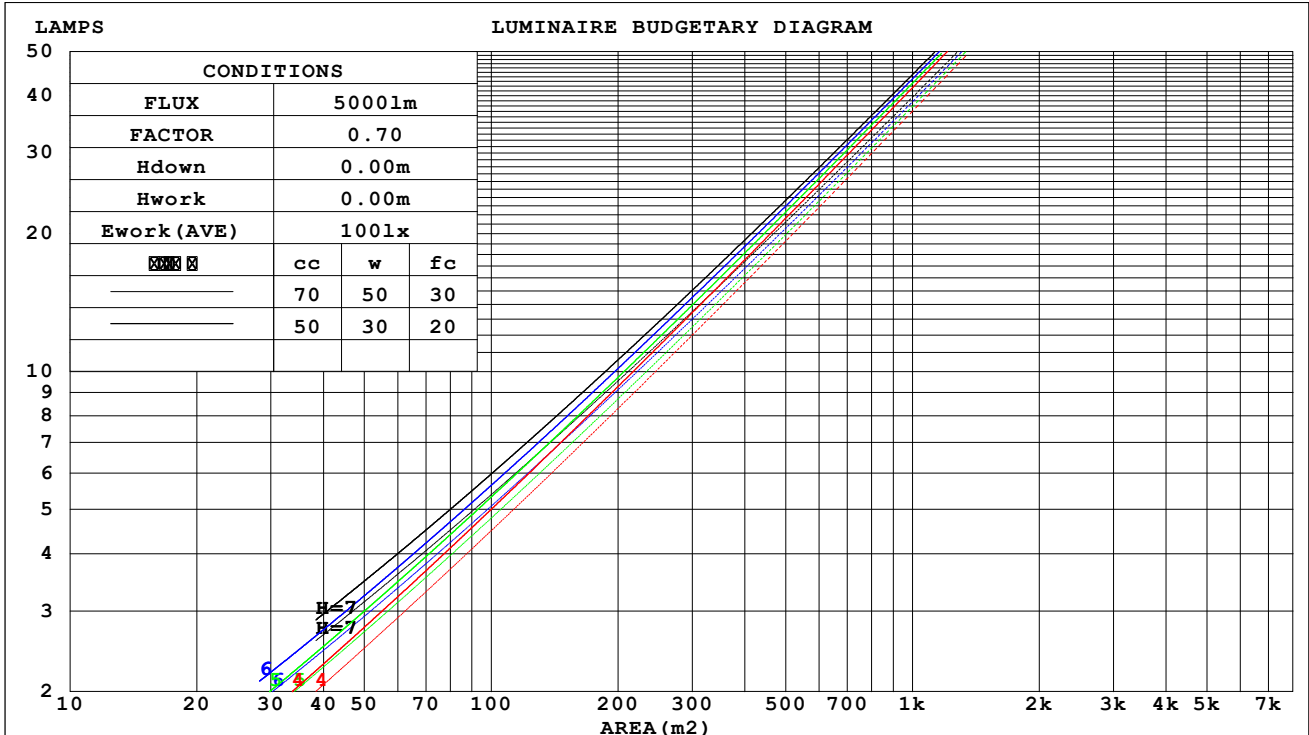
**30minutes warm-up**

## CU AND LUMINAIRE BUDGETARY ESTIMATE DIAGRAM

 Test:U:17.640V I:0.5000A P:8.8200W PF:1.0000 Freq:49.99Hz  
 Lamp Flux:1124.6x1 lm

NAME: CTL-M-1.5-30K-60-SQ-AD	TYPE:	WEIGHT:
SPEC.: 3000K	DIM.:	SERIAL No.: 2408201134
MFR.: MERCURY LIGHTING	SUR.: 0.0016m2	Shielding Angle:

cc	80%			70%			50%			30%			10%			0														
w	50%	30%	10%	50%	30%	10%	50%	30%	10%	50%	30%	10%	50%	30%	10%	0														
fc	20%			20%			20%			20%			20%			0														
RCR	RCR:Room Cavity Ratio															Coefficients of Utilization(CU)														
0.0	.81	.81	.81	.79	.79	.79	.75	.75	.75	.72	.72	.72	.69	.69	.69	.68														
1.0	.75	.74	.73	.74	.73	.71	.71	.70	.69	.69	.68	.67	.66	.66	.65	.64														
2.0	.71	.68	.66	.70	.67	.65	.68	.66	.64	.66	.64	.63	.64	.62	.61	.60														
3.0	.67	.64	.61	.66	.63	.61	.64	.62	.60	.62	.60	.59	.61	.59	.58	.57														
4.0	.63	.59	.57	.62	.59	.57	.61	.58	.56	.59	.57	.55	.58	.56	.55	.54														
5.0	.59	.56	.53	.59	.55	.53	.58	.55	.52	.56	.54	.52	.55	.53	.52	.51														
6.0	.56	.53	.50	.56	.52	.50	.55	.52	.49	.54	.51	.49	.53	.51	.49	.48														
7.0	.53	.50	.47	.53	.49	.47	.52	.49	.47	.51	.48	.46	.51	.48	.46	.45														
8.0	.51	.47	.44	.50	.47	.44	.50	.46	.44	.49	.46	.44	.48	.46	.44	.43														
9.0	.48	.45	.42	.48	.44	.42	.47	.44	.42	.47	.44	.42	.46	.44	.42	.41														
10.0	.46	.42	.40	.46	.42	.40	.45	.42	.40	.45	.42	.40	.44	.42	.40	.39														



C Range: 0 - 360DEG

C Interval: For a lens beam angle of 60°

Test Speed: HIGH

Temperature:25.3

Operators:zoe

Test Date:2024-8-20

Range: 0 - 180DEG

Interval: 1.0DEG

Test System:EVERFINE GO-SPEX500\_V1 SYSTEM V2.00.461

Humidity:65.0%

Test Distance:3.160m [K=1.0000]

Remarks: LAMP:BXRH-30G10T0-G-83 Ra:90

LENS:PM-1084C 50R

NO DRIVER:500mA

30minutes warm-up

**WEC AND CCEC**

Test:U:17.640V I:0.5000A P:8.8200W PF:1.0000 Freq:49.99Hz Lamp Flux:1124.6x1 lm		
NAME: CTL-M-1.5-30K-60-SQ-AD	TYPE:	WEIGHT:
SPEC.: 3000K	DIM.:	SERIAL No.: 2408201134
MFR.: MERCURY LIGHTING	SUR.: 0.0016m2	Shielding Angle:

cc	80%			70%			50%			30%			10%			0
w	50%	30%	10%	50%	30%	10%	50%	30%	10%	50%	30%	10%	50%	30%	10%	0
fc	20%			20%			20%			20%			20%			0
RCR	RCR:Room Cavity Ratio						Wall Exitance Coefficients(WEC)									
0.0																
1.0	.111	.063	.020	.107	.061	.019	.098	.056	.018	.091	.052	.017	.083	.048	.016	
2.0	.106	.058	.018	.102	.056	.017	.095	.053	.016	.088	.050	.016	.082	.047	.015	
3.0	.100	.053	.016	.097	.052	.016	.091	.049	.015	.086	.047	.014	.080	.044	.014	
4.0	.095	.050	.015	.093	.048	.014	.087	.046	.014	.083	.044	.013	.078	.043	.013	
5.0	.091	.046	.013	.089	.045	.013	.084	.044	.013	.080	.042	.013	.076	.041	.012	
6.0	.087	.044	.012	.085	.043	.012	.081	.041	.012	.077	.040	.012	.074	.039	.012	
7.0	.083	.041	.012	.081	.040	.012	.078	.039	.011	.075	.038	.011	.072	.037	.011	
8.0	.080	.039	.011	.078	.038	.011	.075	.037	.011	.072	.037	.011	.069	.036	.010	
9.0	.077	.037	.010	.075	.037	.010	.072	.036	.010	.070	.035	.010	.067	.034	.010	
10.0	.074	.035	.010	.072	.035	.010	.070	.034	.010	.067	.034	.010	.065	.033	.009	

ꠁcc	80%			70%			50%			30%			10%			0
ꠁw	50%	30%	10%	50%	30%	10%	50%	30%	10%	50%	30%	10%	50%	30%	10%	0
ꠁfc	20%			20%			20%			20%			20%			0
RCR	RCR:Room Cavity Ratio						Ceiling Cavity Exitance Coefficients(CCEC)									
0.0	.129	.129	.129	.110	.110	.110	.075	.075	.075	.043	.043	.043	.014	.014	.014	
1.0	.115	.107	.099	.099	.091	.085	.067	.063	.059	.039	.036	.034	.012	.012	.011	
2.0	.104	.090	.077	.089	.077	.067	.061	.053	.047	.035	.031	.027	.011	.010	.009	
3.0	.095	.077	.062	.082	.066	.054	.056	.046	.038	.032	.027	.022	.010	.009	.007	
4.0	.088	.067	.050	.076	.058	.044	.052	.040	.031	.030	.024	.018	.010	.008	.006	
5.0	.082	.059	.042	.070	.051	.036	.048	.036	.026	.028	.021	.015	.009	.007	.005	
6.0	.077	.052	.035	.066	.045	.030	.046	.032	.021	.026	.019	.013	.009	.006	.004	
7.0	.072	.047	.030	.062	.041	.026	.043	.029	.018	.025	.017	.011	.008	.006	.004	
8.0	.068	.043	.025	.059	.037	.022	.041	.026	.016	.024	.015	.009	.008	.005	.003	
9.0	.065	.039	.022	.056	.034	.019	.039	.024	.014	.023	.014	.008	.007	.005	.003	
10.0	.062	.036	.019	.053	.031	.017	.037	.022	.012	.022	.013	.007	.007	.004	.002	

C Range: 0 - 360DEG  
 C Interval: For a lens beam angle of 60°  
 Test Speed: HIGH  
 Temperature:25.3  
 Operators:zoe  
 Test Date:2024-8-20

Range: 0 - 180DEG  
 Interval: 1.0DEG  
 Test System:EVERFINE GO-SPEX500\_V1 SYSTEM V2.00.461  
 Humidity:65.0%  
 Test Distance:3.160m [K=1.0000]  
 Remarks: LAMP:BXRH-30G10T0-G-83 Ra:90  
 LENS:PM-1084C 50R  
 NO DRIVER:500mA  
 30minutes warm-up

**UGR(Unified Glare Rating) Table**

Test:U:17.640V I:0.5000A P:8.8200W PF:1.0000 Freq:49.99Hz Lamp Flux:1124.6x1 lm										
NAME: CTL-M-1.5-30K-60-SQ-AD					TYPE:			WEIGHT:		
SPEC.: 3000K					DIM.:			SERIAL No.: 2408201134		
MFR.: MERCURY LIGHTING					SUR.: 0.0016m2			Shielding Angle:		
ceiling/cavity	0.7	0.7	0.5	0.5	0.3	0.7	0.7	0.5	0.5	0.3
walls	0.5	0.3	0.5	0.3	0.3	0.5	0.3	0.5	0.3	0.3
working plane	0.2	0.2	0.2	0.2	0.2	0.2	0.2	0.2	0.2	0.2
Room dimensions	Viewed crosswise					Viewed endwise				
x = 2H y = 2H	18.3	19.2	18.5	19.3	19.5	18.4	19.2	18.6	19.4	19.5
3H	18.2	18.9	18.4	19.1	19.3	18.2	19.0	18.5	19.2	19.4
4H	18.1	18.8	18.3	19.0	19.3	18.1	18.9	18.4	19.1	19.3
6H	18.0	18.7	18.3	18.9	19.2	18.0	18.7	18.3	19.0	19.2
8H	17.9	18.6	18.2	18.9	19.1	18.0	18.7	18.3	18.9	19.2
12H	17.9	18.5	18.2	18.8	19.1	18.0	18.6	18.3	18.9	19.1
4H 2H	18.1	18.8	18.3	19.0	19.3	18.1	18.9	18.4	19.1	19.3
3H	17.9	18.6	18.2	18.8	19.1	18.0	18.6	18.3	18.9	19.1
4H	17.8	18.4	18.2	18.7	19.0	17.9	18.5	18.2	18.8	19.1
6H	17.7	18.2	18.1	18.6	18.9	17.8	18.3	18.1	18.6	19.0
8H	17.7	18.1	18.1	18.5	18.9	17.7	18.2	18.1	18.6	18.9
12H	17.6	18.1	18.0	18.4	18.8	17.7	18.1	18.1	18.5	18.9
8H 4H	17.7	18.1	18.1	18.5	18.9	17.7	18.2	18.1	18.6	18.9
6H	17.6	18.0	18.0	18.3	18.8	17.6	18.0	18.0	18.4	18.8
8H	17.5	17.9	18.0	18.3	18.7	17.6	17.9	18.0	18.3	18.8
12H	17.5	17.7	17.9	18.2	18.7	17.5	17.8	18.0	18.2	18.7
12H 4H	17.6	18.1	18.0	18.4	18.8	17.7	18.1	18.1	18.5	18.9
6H	17.5	17.9	18.0	18.3	18.7	17.6	17.9	18.0	18.3	18.8
8H	17.5	17.7	17.9	18.2	18.7	17.5	17.8	18.0	18.2	18.7
Variations with the observer position at spacings(CIE Pub.117) :										
S = 1.0H	+ 4.4 / -14.0					+ 4.1 / -13.0				
1.5H	+ 7.1 / -13.5					+ 6.8 / -12.6				
2.0H	+ 7.6 / - 4.6					+ 6.8 / - 4.7				

CIE Pub.117, 1125 lm Total Lamp Luminous Flux Correct (8log(F/F0) = 0.4)  
 Area: 0.0016 m2

C Range: 0 - 360DEG

C Interval: For a lens beam angle of 60°

Test Speed: HIGH

Temperature:25.3

Operators:zoe

Test Date:2024-8-20

Range: 0 - 180DEG

Interval: 1.0DEG

Test System:EVERFINE GO-SPEX500\_V1 SYSTEM V2.00.461

Humidity:65.0%

Test Distance:3.160m [K=1.0000]

Remarks: LAMP:BXRH-30G10T0-G-83 Ra:90

LENS:PM-1084C 50R

NO DRIVER:500mA

30minutes warm-up



**UTILIZATION FACTORS TABLE**

Test:U:17.640V I:0.5000A P:8.8200W PF:1.0000 Freq:49.99Hz Lamp Flux:1124.6x1 lm		
NAME: CTL-M-1.5-30K-60-SQ-AD	TYPE:	WEIGHT:
SPEC.: 3000K	DIM.:	SERIAL No.: 2408201134
MFR.: MERCURY LIGHTING	SUR.: 0.0016m2	Shielding Angle:

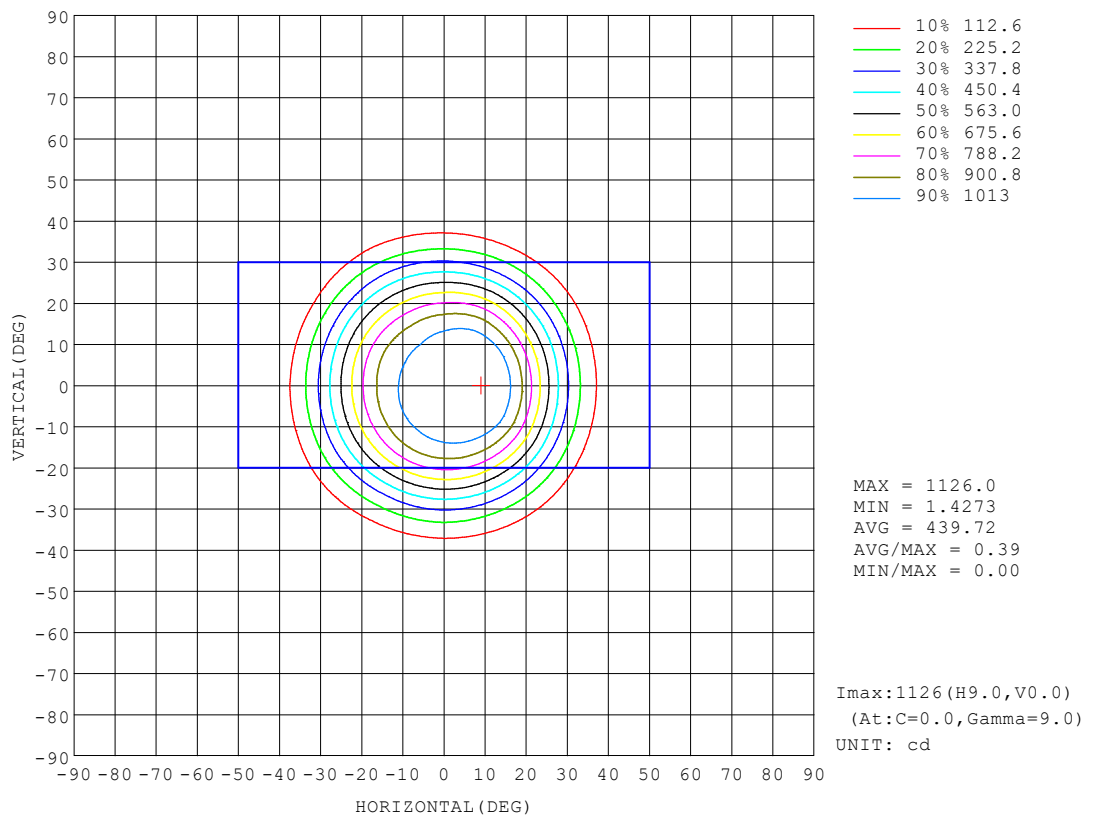
REFLECTANCE										
Ceiling	0.8	0.8	0.8	0.7	0.7	0.7	0.5	0.5	0.5	0
Walls	0.7	0.5	0.3	0.7	0.5	0.3	0.7	0.5	0.3	0
Working plane	0.2	0.2	0.2	0.2	0.2	0.2	0.2	0.2	0.2	0
ROOM INDEX	UTILIZATION FACTORS (PERCENT) $k(RI) \times RCR = 5$									
$k = 0.60$	61	57	55	61	57	55	60	57	55	52
0.80	66	62	60	65	62	60	65	62	60	57
1.00	69	65	63	68	65	63	67	65	62	60
1.25	71	68	66	70	67	65	69	67	65	62
1.50	73	70	68	72	69	67	70	68	67	64
2.00	74	72	70	73	71	69	71	70	68	65
2.50	75	73	71	74	72	70	72	70	69	65
3.00	76	74	72	75	73	72	73	71	70	66
4.00	77	76	74	76	75	73	74	73	72	67
5.00	78	77	76	77	76	75	74	73	73	68
ROOM INDEX	UF(total)									Direct
According to DIN EN 13032-2 2004			Suspended					SHRNOM = 1.25		

C Range: 0 - 360DEG  
 C Interval: For a lens beam angle of 60°  
 Test Speed: HIGH  
 Temperature: 25.3  
 Operators: zoe  
 Test Date: 2024-8-20

Range: 0 - 180DEG  
 Interval: 1.0DEG  
 Test System: EVERFINE GO-SPEX500\_V1 SYSTEM V2.00.461  
 Humidity: 65.0%  
 Test Distance: 3.160m [K=1.0000]  
 Remarks: LAMP: BXRH-30G10T0-G-83 Ra: 90  
 LENS: PM-1084C 50R  
 NO DRIVER: 500mA  
 30minutes warm-up

## ISOCANDELA DIAGRAM

Test:U:17.640V I:0.5000A P:8.8200W PF:1.0000 Freq:49.99Hz Lamp Flux:1124.6x1 lm		
NAME: CTL-M-1.5-30K-60-SQ-AD	TYPE:	WEIGHT:
SPEC.: 3000K	DIM.:	SERIAL No.: 2408201134
MFR.: MERCURY LIGHTING	SUR.: 0.0016m2	Shielding Angle:



C Range: 0 - 360DEG

C Interval: For a lens beam angle of 60°

Test Speed: HIGH

Temperature:25.3

Operators:zoe

Test Date:2024-8-20

Range: 0 - 180DEG

Interval: 1.0DEG

Test System:EVERFINE GO-SPEX500\_V1 SYSTEM V2.00.461

Humidity:65.0%

Test Distance:3.160m [K=1.0000]

Remarks: LAMP:BXRH-30G10T0-G-83 Ra:90

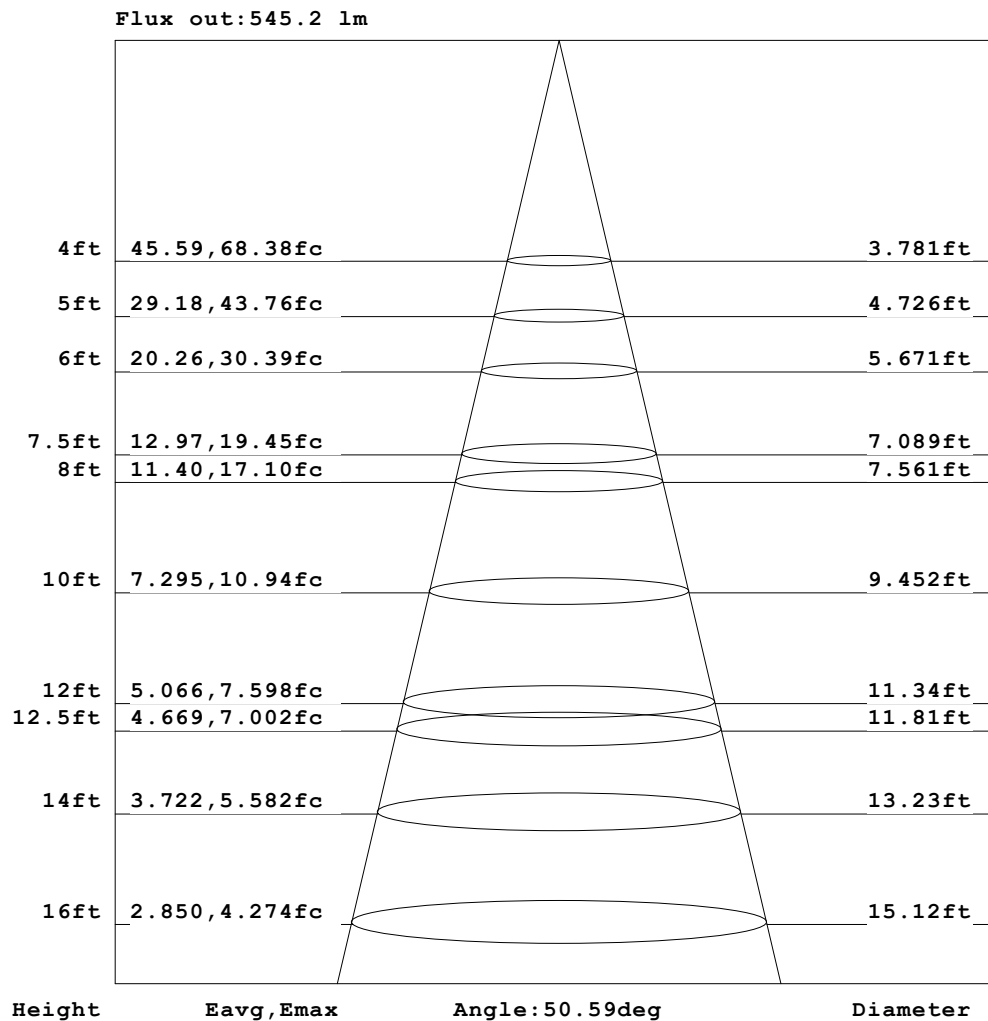
LENS:PM-1084C 50R

NO DRIVER:500mA

30minutes warm-up

**AAI Figure**

Test:U:17.640V I:0.5000A P:8.8200W PF:1.0000 Freq:49.99Hz Lamp Flux:1124.6x1 lm		
NAME: CTL-M-1.5-30K-60-SQ-AD	TYPE:	WEIGHT:
SPEC.: 3000K	DIM.:	SERIAL No.: 2408201134
MFR.: MERCURY LIGHTING	SUR.: 0.0016m2	Shielding Angle:

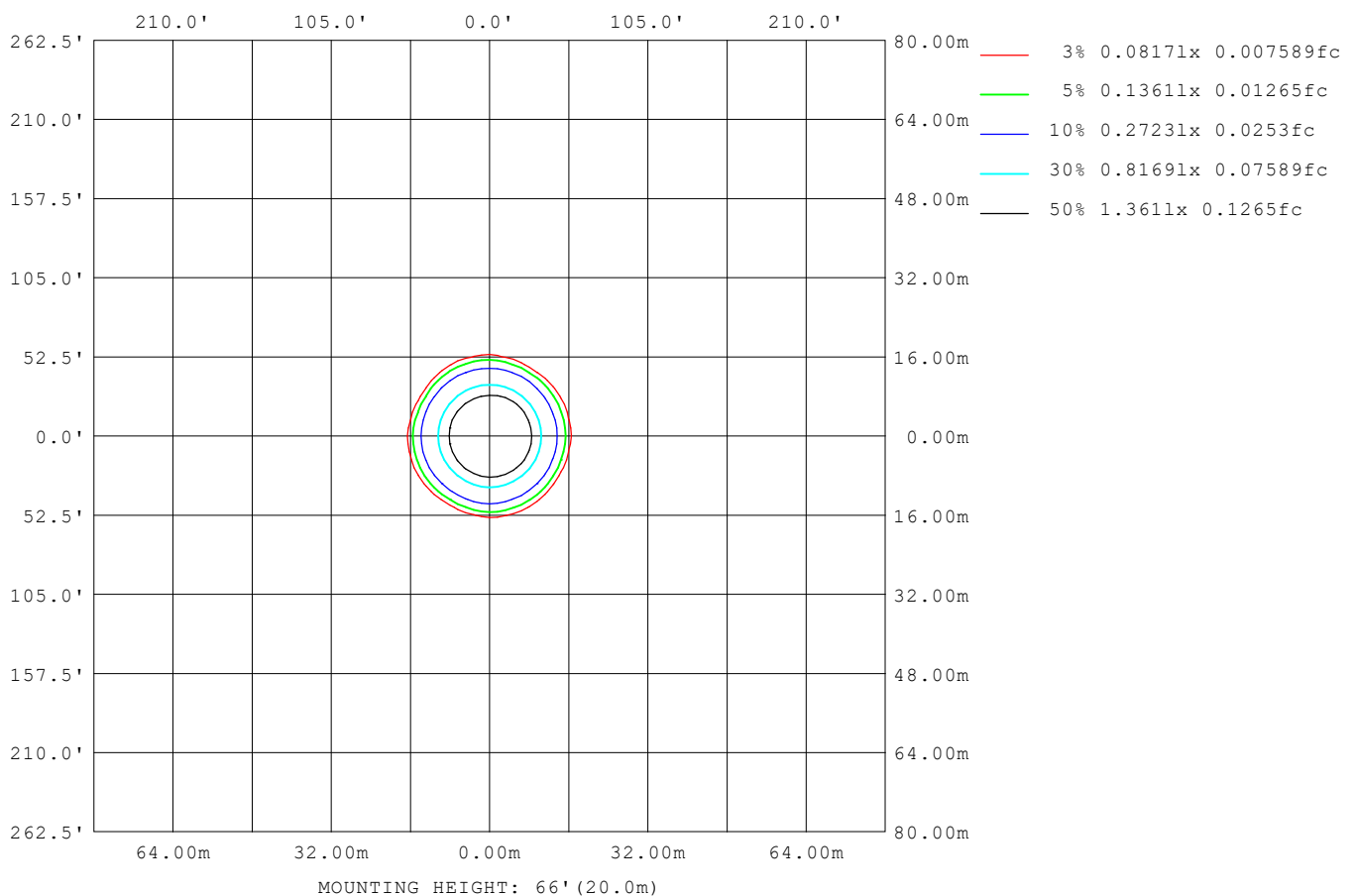


Note: The Curves indicate the illuminated area and the average illumination when the luminaire is at different distance.

C Range: 0 - 360DEG	Range: 0 - 180DEG
C Interval: For a lens beam angle of 60°	Interval: 1.0DEG
Test Speed: HIGH	Test System: EVERFINE GO-SPEX500_V1 SYSTEM V2.00.461
Temperature: 25.3	Humidity: 65.0%
Operators: zoe	Test Distance: 3.160m [K=1.0000]
Test Date: 2024-8-20	Remarks: LAMP: BXRH-30G10T0-G-83 Ra: 90
	LENS: PM-1084C 50R
	NO DRIVER: 500mA
	30minutes warm-up

**ISOLUX DIAGRAM**

<b>Test:</b> U:17.640V I:0.5000A P:8.8200W PF:1.0000 Freq:49.99Hz <b>Lamp Flux:</b> 1124.6x1 lm		
<b>NAME:</b> CTL-M-1.5-30K-60-SQ-AD	<b>TYPE:</b>	<b>WEIGHT:</b>
<b>SPEC.:</b> 3000K	<b>DIM.:</b>	<b>SERIAL No.:</b> 2408201134
<b>MFR.:</b> MERCURY LIGHTING	<b>SUR.:</b> 0.0016m <sup>2</sup>	<b>Shielding Angle:</b>


**C Range:** 0 - 360DEG

**C Interval:** For a lens beam angle of 60°

**Test Speed:** HIGH

**Temperature:** 25.3

**Operators:** zoe

**Test Date:** 2024-8-20

**Range:** 0 - 180DEG

**Interval:** 1.0DEG

**Test System:** EVERFINE GO-SPEX500\_V1 SYSTEM V2.00.461

**Humidity:** 65.0%

**Test Distance:** 3.160m [K=1.0000]

**Remarks:** LAMP: BXRH-30G10T0-G-83 Ra: 90

**LENS:** PM-1084C 50R

**NO DRIVER:** 500mA

**30minutes warm-up**

**LED Avg.L Report**

Test:U:17.640V I:0.5000A P:8.8200W PF:1.0000 Freq:49.99Hz Lamp Flux:1124.6x1 lm		
NAME: CTL-M-1.5-30K-60-SQ-AD	TYPE:	WEIGHT:
SPEC.: 3000K	DIM.:	SERIAL No.: 2408201134
MFR.: MERCURY LIGHTING	SUR.: 0.0016m2	Shielding Angle:

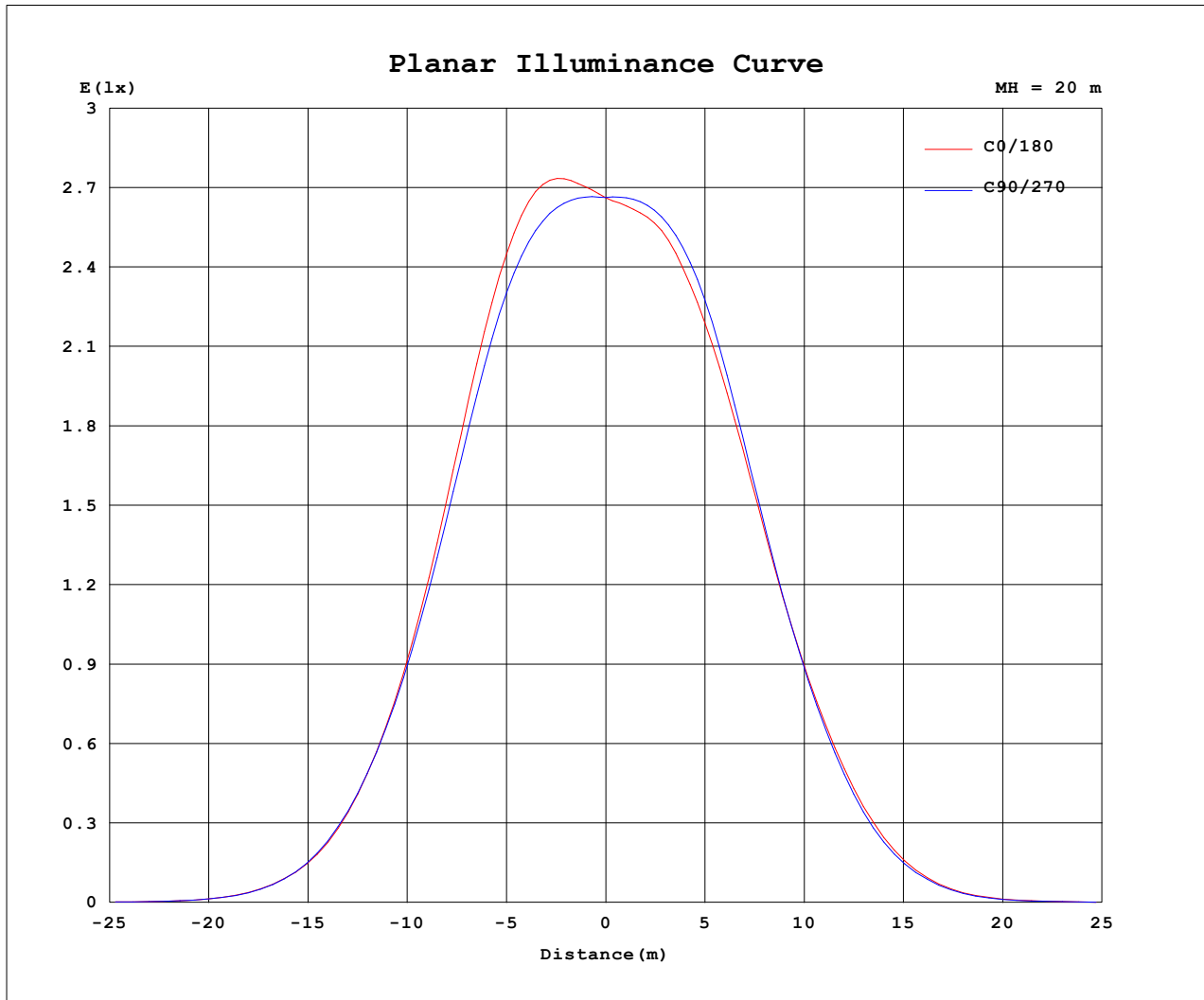
AvgL	cd/m2
L_0~180 (65) av	1589
L_0~180 (75) av	1243
L_0~180 (85) av	356
L_90~270 (65) av	1714
L_90~270 (75) av	1450
L_90~270 (85) av	438
L_45 (65) av	1734
L_45 (75) av	772
L_45 (85) av	436

Standard: GB/T 29293-2012

C Range: 0 - 360DEG  
 C Interval: For a lens beam angle of 60°  
 Test Speed: HIGH  
 Temperature:25.3  
 Operators:zoe  
 Test Date:2024-8-20

Range: 0 - 180DEG  
 Interval: 1.0DEG  
 Test System:EVERFINE GO-SPEX500\_V1 SYSTEM V2.00.461  
 Humidity:65.0%  
 Test Distance:3.160m [K=1.0000]  
 Remarks: LAMP:BXRH-30G10T0-G-83 Ra:90  
 LENS:PM-1084C 50R  
 NO DRIVER:500mA  
 30minutes warm-up

### Planar Illuminance Curve



C Range: 0 - 360DEG  
C Interval: For a lens beam angle of 60°  
Test Speed: HIGH  
Temperature: 25.3  
Operators: zoe  
Test Date: 2024-8-20

Range: 0 - 180DEG  
Interval: 1.0DEG  
Test System: EVERFINE GO-SPEX500\_V1 SYSTEM V2.00.461  
Humidity: 65.0%  
Test Distance: 3.160m [K=1.0000]  
Remarks: LAMP: BXRH-30G10T0-G-83 Ra: 90  
LENS: PM-1084C 50R  
NO DRIVER: 500mA  
30minutes warm-up

**LUMINOUS DISTRIBUTION INTENSITY DATA**

Test:U:17.640V I:0.5000A P:8.8200W PF:1.0000 Freq:49.99Hz Lamp Flux:1124.6x1 lm		
NAME: CTL-M-1.5-30K-60-SQ-AD	TYPE:	WEIGHT:
SPEC.: 3000K	DIM.:	SERIAL No.: 2408201134
MFR.: MERCURY LIGHTING	SUR.: 0.0016m2	Shielding Angle:

Table--1

UNIT: cd

C (DEG) (DEG)	0	30	60	90	120	150	180	210	240	270	300	330						
0	1065	1065	1065	1065	1065	1065	1065	1065	1065	1065	1065	1065						
5	1104	1099	1087	1073	1061	1056	1054	1055	1061	1071	1085	1097						
10	1125	1113	1088	1063	1041	1035	1027	1024	1032	1055	1084	1112						
15	1050	1050	1013	986	967	949	937	944	945	973	1021	1044						
20	855	862	828	808	793	780	775	781	776	792	838	849						
25	591	600	581	573	564	567	565	570	566	564	587	590						
30	351	348	346	350	335	356	360	352	356	348	343	348						
35	166	167	165	169	161	176	179	174	175	167	167	165						
40	61.4	47.0	57.0	60.5	44.2	59.1	62.8	42.0	56.7	58.8	43.5	55.2						
45	16.1	11.5	14.0	15.7	10.8	13.5	14.9	10.00	12.2	14.0	9.70	12.5						
50	4.77	3.68	4.49	4.87	3.52	4.26	4.40	3.23	3.93	4.24	3.44	3.97						
55	2.01	1.62	1.76	2.04	1.37	1.60	1.88	1.48	1.65	1.98	2.16	2.03						
60	1.28	1.24	1.27	1.25	1.17	1.22	1.22	1.18	1.19	1.38	2.10	1.64						
65	1.03	1.01	1.11	1.20	1.20	1.22	1.12	0.99	0.99	1.12	1.45	1.35						
70	0.78	0.87	1.01	1.20	1.41	1.31	1.07	0.89	0.80	0.78	1.03	0.92						
75	0.42	0.17	0.59	0.79	0.20	0.78	0.61	0.17	0.27	0.41	0.31	0.28						
80	0.11	0.10	0.09	0.09	0.08	0.08	0.08	0.08	0.10	0.13	0.20	0.17						
85	0.06	0.05	0.04	0.04	0.03	0.03	0.04	0.03	0.05	0.08	0.13	0.10						
90	0.00	0.00	0.00	0.00	0.00	0.00	0.00	0.00	0.00	0.00	0.00	0.00						
95	0.00	0.00	0.00	0.00	0.00	0.00	0.00	0.00	0.00	0.00	0.00	0.00						
100	0.00	0.00	0.00	0.00	0.00	0.00	0.00	0.00	0.00	0.00	0.00	0.00						
105	0.00	0.00	0.00	0.00	0.00	0.00	0.00	0.00	0.00	0.00	0.00	0.00						
110	0.00	0.00	0.00	0.00	0.00	0.00	0.00	0.00	0.00	0.00	0.00	0.00						
115	0.00	0.00	0.00	0.00	0.00	0.00	0.00	0.00	0.00	0.00	0.00	0.00						
120	0.00	0.00	0.00	0.00	0.00	0.00	0.00	0.00	0.00	0.00	0.00	0.00						
125	0.00	0.00	0.00	0.00	0.00	0.00	0.00	0.00	0.00	0.00	0.00	0.00						
130	0.00	0.00	0.00	0.00	0.00	0.00	0.00	0.00	0.00	0.00	0.00	0.00						
135	0.00	0.00	0.00	0.00	0.00	0.00	0.00	0.00	0.00	0.00	0.00	0.00						
140	0.00	0.00	0.00	0.00	0.00	0.00	0.00	0.00	0.00	0.00	0.00	0.00						
145	0.00	0.00	0.00	0.00	0.00	0.00	0.00	0.00	0.00	0.00	0.00	0.00						
150	0.00	0.00	0.00	0.00	0.00	0.00	0.00	0.00	0.00	0.00	0.00	0.00						
155	0.00	0.00	0.00	0.00	0.00	0.00	0.00	0.00	0.00	0.00	0.00	0.00						
160	0.00	0.00	0.00	0.00	0.00	0.00	0.00	0.00	0.00	0.00	0.00	0.00						
165	0.00	0.00	0.00	0.00	0.00	0.00	0.00	0.00	0.00	0.00	0.00	0.00						
170	0.00	0.00	0.00	0.00	0.00	0.00	0.00	0.00	0.00	0.00	0.00	0.00						
175	0.00	0.00	0.00	0.00	0.00	0.00	0.00	0.00	0.00	0.00	0.00	0.00						
180	0.00	0.00	0.00	0.00	0.00	0.00	0.00	0.00	0.00	0.00	0.00	0.00						

C Range: 0 - 360DEG

C Interval: For a lens beam angle of 60°

Test Speed: HIGH

Temperature:25.3

Operators:zoe

Test Date:2024-8-20

Range: 0 - 180DEG

Interval: 1.0DEG

Test System:EVERFINE GO-SPEX500\_V1 SYSTEM V2.00.461

Humidity:65.0%

Test Distance:3.160m [K=1.0000]

Remarks: LAMP:BXRH-30G10T0-G-83 Ra:90

LENS:PM-1084C 50R

NO DRIVER:500mA

30minutes warm-up