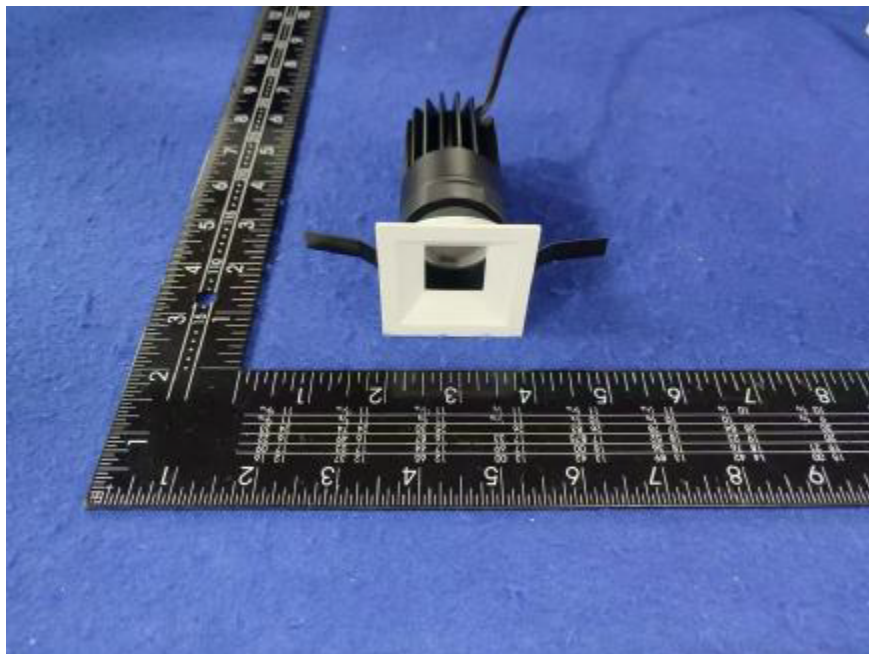


Photometric report for Flanged and Flangeless Trim



Light Output Ratio:	69.4%	
Luminaire Power:	8.822 W	
SHR Nominal:	0.50	Calculated using the TM5
SHR Maximum:	0.65	fine grid method.

C Range: 0 - 360DEG

C Interval: For a lens beam angle of 36°

Test Speed: HIGH

Temperature: 25.3

Operators: zoe

Test Date: 2024-8-20

Range: 0 - 180DEG

Interval: 1.0DEG

Test System: EVERFINE GO-SPEX500_V1 SYSTEM V2.00.461

Humidity: 65.0%

Test Distance: 3.160m [K=1.0000]

Remarks: LAMP: BXRH-30G10T0-G-83 Ra: 90

LENS: PM-1084B 36R

NO DRIVER: 500mA

30minutes warm-up

LUMINOUS INTENSITY DISTRIBUTION DIAGRAM

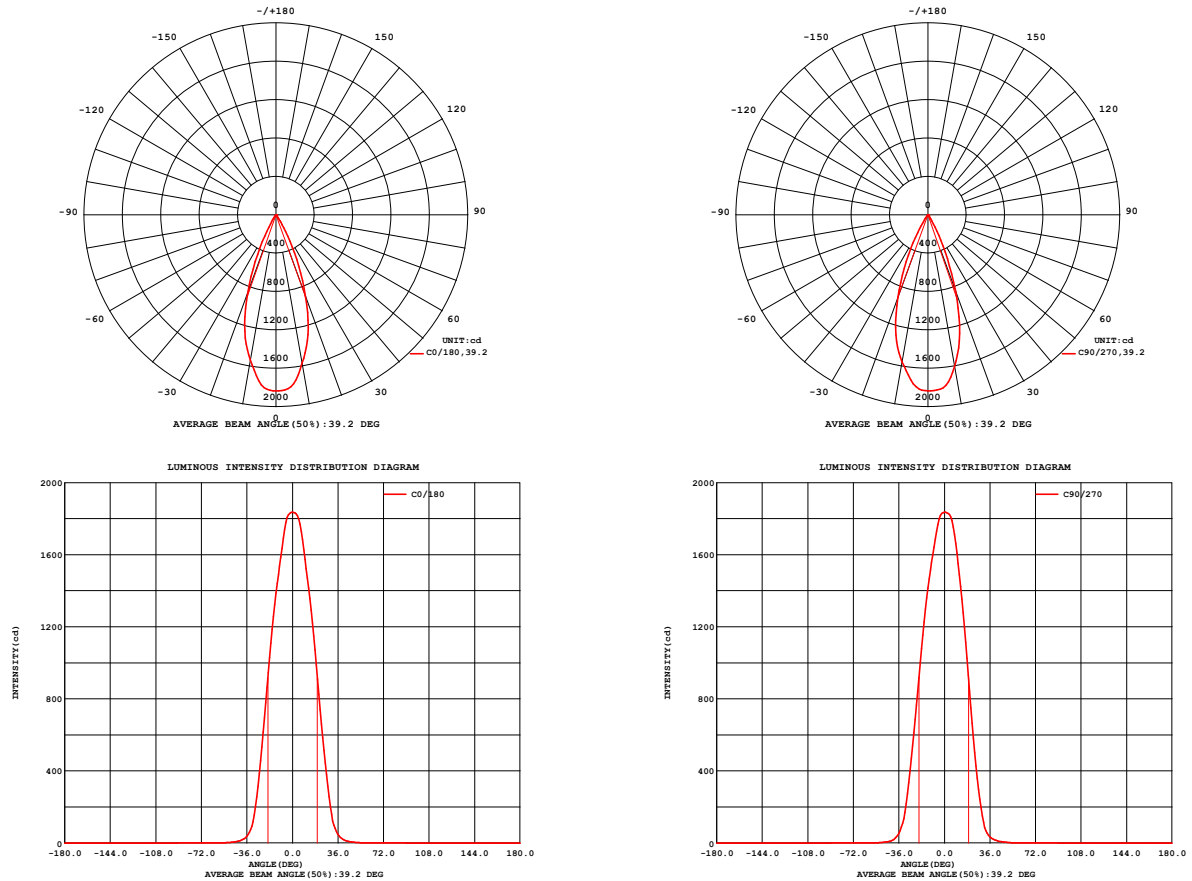


Fig. C0/C180

Fig. C90/C270

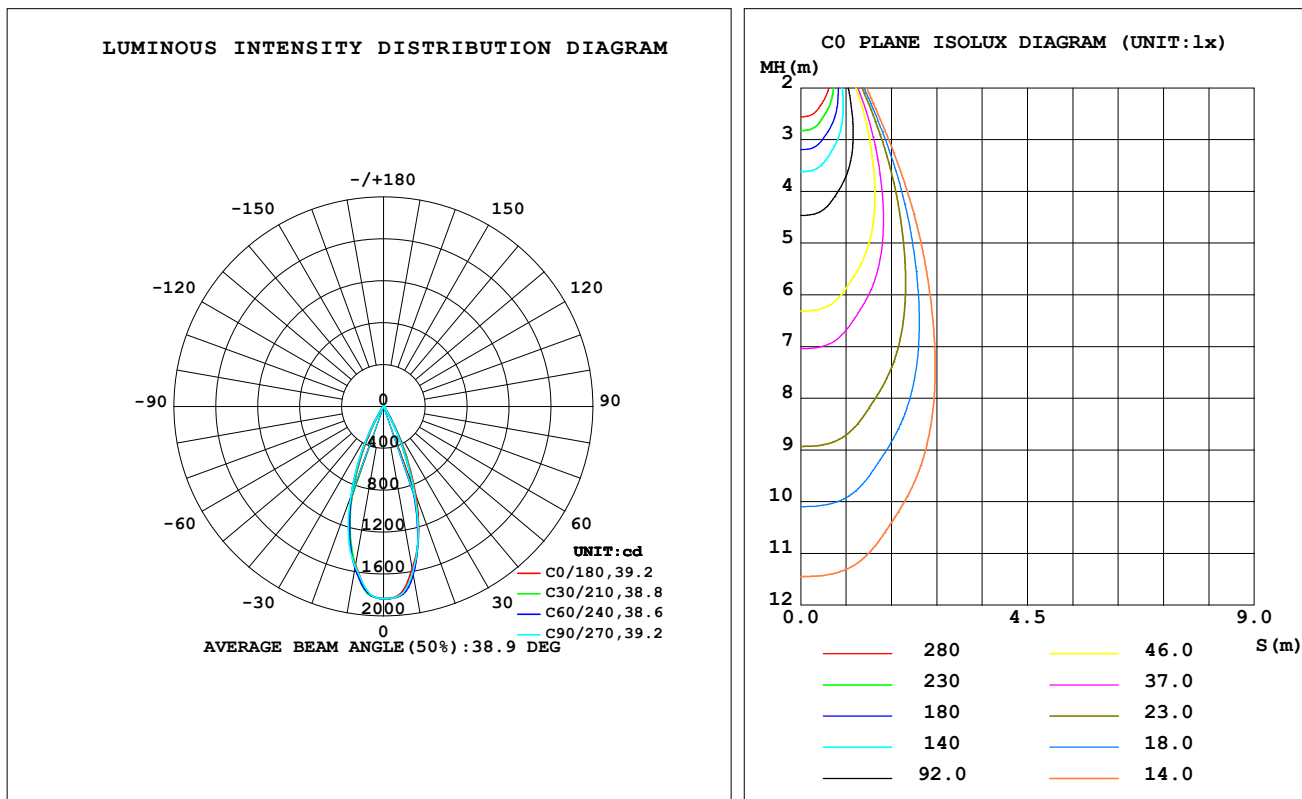
C Range: 0 - 360DEG
C Interval: For a lens beam angle of 36°
Test Speed: HIGH
Temperature: 25.3
Operators: zoe
Test Date: 2024-8-20

Range: 0 - 180DEG
Interval: 1.0DEG
Test System: EVERFINE GO-SPEX500_V1 SYSTEM V2.00.461
Humidity: 65.0%
Test Distance: 3.160m [K=1.0000]
Remarks: LAMP: BXRH-30G10T0-G-83 Ra: 90
LENS: PM-1084B 36R
NO DRIVER: 500mA
30minutes warm-up

LUMINAIRE PHOTOMETRIC TEST REPORT

Test:U:17.644V I:0.5000A P:8.8220W PF:1.0000 Freq:49.99Hz Lamp Flux:1124.6x1 lm		
NAME: CTL-M-1.5-30K-36-SQ-AD	TYPE:	WEIGHT:
SPEC.: 3000K	DIM.:	SERIAL No.: 2408201133
MFR.: MERCURY LIGHTING	SUR.: 0.0016m ²	Shielding Angle:

DATA OF LAMP		PHOTOMETRIC DATA				Eff: 88.43 lm/W
MODEL	Brideglux	I _{max} (cd)	1835	S/MH (C0/180)		0.61
NOMINAL POWER (W)	9	LOR (%)	69.4	S/MH (C90/270)		0.64
RATED VOLTAGE (V)	18	TOTAL FLUX (lm)	780.11	☒ UP, DN (C0-180)		0.0, 33.9
NOMINAL FLUX (lm)	1124.6	CIE CLASS	DIRECT	☒ UP, DN (C180-360)		0.0, 35.5
LAMPS INSIDE	1	☒ up (%)	0.0	CIBSE SHR NOM		0.50
TEST VOLTAGE (V)	18	☒ down (%)	69.4	CIBSE SHR MAX		0.65



C Range: 0 - 360DEG

C Interval: For a lens beam angle of 36°

Test Speed: HIGH

Temperature: 25.3

Operators: zoe

Test Date: 2024-8-20

Range: 0 - 180DEG

Interval: 1.0DEG

Test System: EVERFINE GO-SPEX500_V1 SYSTEM V2.00.461

Humidity: 65.0%

Test Distance: 3.160m [K=1.0000]

Remarks: LAMP: BXRH-30G10T0-G-83 Ra: 90

LENS: PM-1084B 36R

NO DRIVER: 500mA

30minutes warm-up

ZONAL FLUX DIAGRAM

ZONAL FLUX DIAGRAM:

°	C0	C45	C90	C135	C180	C225	C270	C315	°	zone	total	%lum,lamp
10	1574	1628	1606	1575	1538	1559	1557	1573	0- 10	164.3	164.3	21.1,14.6
20	905.7	843.1	840.4	806.9	863.1	886.9	919.1	896.9	10- 20	342.3	506.5	64.9,45
30	203.2	183.7	149.8	155.0	152.9	207.8	217.0	238.0	20- 30	221.1	727.6	93.3,64.7
40	20.71	19.04	16.98	16.64	16.46	18.48	19.45	21.13	30- 40	43.06	770.6	98.8,68.5
50	3.221	3.942	2.994	3.484	2.868	3.504	2.530	3.647	40- 50	6.692	777.3	99.6,69.1
60	1.103	0.9805	0.9072	0.9541	1.038	0.9972	0.9710	1.055	50- 60	1.523	778.8	99.8,69.3
70	0.7372	0.7602	0.9213	0.7803	0.7280	0.6351	0.6573	0.6549	60- 70	0.8408	779.7	99.9,69.3
80	0.0822	0.0702	0.0692	0.0695	0.0821	0.0916	0.0967	0.0866	70- 80	0.3985	780.1	100,69.4
90	0	0	0	0	0	0	0	0	80- 90	0.0430	780.1	100,69.4
100	0	0	0	0	0	0	0	0	90-100	0	780.1	100,69.4
110	0	0	0	0	0	0	0	0	100-110	0	780.1	100,69.4
120	0	0	0	0	0	0	0	0	110-120	0	780.1	100,69.4
130	0	0	0	0	0	0	0	0	120-130	0	780.1	100,69.4
140	0	0	0	0	0	0	0	0	130-140	0	780.1	100,69.4
150	0	0	0	0	0	0	0	0	140-150	0	780.1	100,69.4
160	0	0	0	0	0	0	0	0	150-160	0	780.1	100,69.4
170	0	0	0	0	0	0	0	0	160-170	0	780.1	100,69.4
180	0	0	0	0	0	0	0	0	170-180	0	780.1	100,69.4
DEG	LUMINOUS INTENSITY:cd									UNIT:lm		

C Range: 0 - 360DEG

C Interval: For a lens beam angle of 36°

Test Speed: HIGH

Temperature:25.3

Operators:zoe

Test Date:2024-8-20

Range: 0 - 180DEG

Interval: 1.0DEG

Test System:EVERFINE GO-SPEX500_V1 SYSTEM V2.00.461

Humidity:65.0%

Test Distance:3.160m [K=1.0000]

Remarks: LAMP:BXRH-30G10T0-G-83 Ra:90

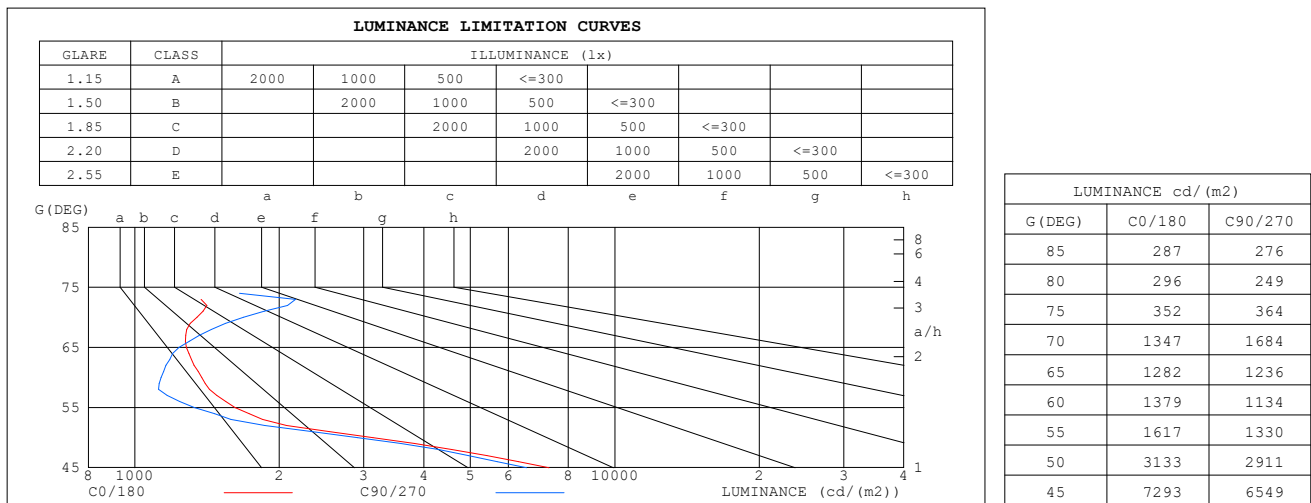
LENS:PM-1084B 36R

NO DRIVER:500mA

30minutes warm-up

LUMINANCE LIMITATION CURVES

Test: U:17.644V I:0.5000A P:8.8220W PF:1.0000 Freq:49.99Hz Lamp Flux: 1124.6x1 lm		
NAME: CTL-M-1.5-30K-36-SQ-AD	TYPE:	WEIGHT:
SPEC.: 3000K	DIM.:	SERIAL No.: 2408201133
MFR.: MERCURY LIGHTING	SUR.: 0.0016m2	Shielding Angle:


C Range: 0 - 360DEG

C Interval: For a lens beam angle of 36°

Test Speed: HIGH

Temperature:25.3

Operators:zoe

Test Date:2024-8-20

Range: 0 - 180DEG

Interval: 1.0DEG

Test System:EVERFINE GO-SPEX500_V1 SYSTEM V2.00.461

Humidity:65.0%

Test Distance:3.160m [K=1.0000]

Remarks: LAMP:BXRH-30G10T0-G-83 Ra:90

LENS:PM-1084B 36R

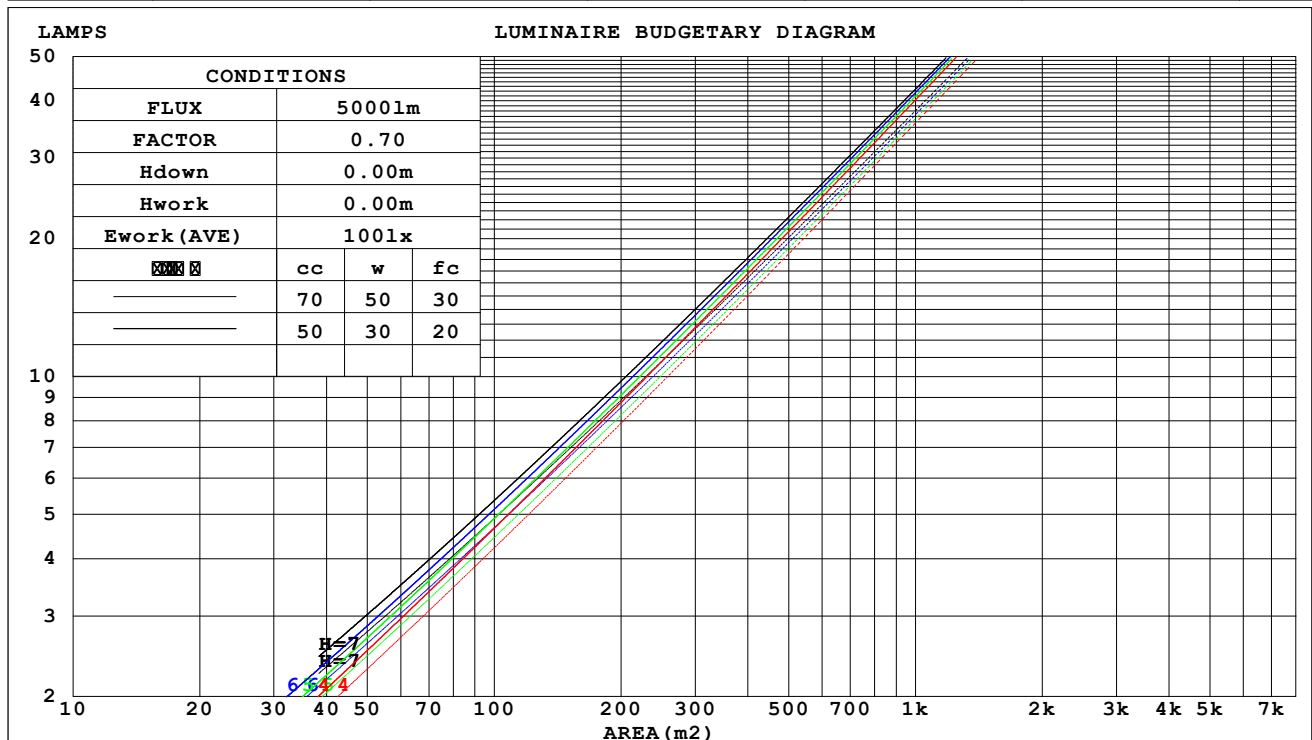
NO DRIVER:500mA

30minutes warm-up

CU AND LUMINAIRE BUDGETARY ESTIMATE DIAGRAM

Test:U:17.644V I:0.5000A P:8.8220W PF:1.0000 Freq:49.99Hz Lamp Flux:1124.6x1 lm		
NAME: CTL-M-1.5-30K-36-SQ-AD	TYPE:	WEIGHT:
SPEC.: 3000K	DIM.:	SERIAL No.: 2408201133
MFR.: MERCURY LIGHTING	SUR.: 0.0016m2	Shielding Angle:

Room	80%			70%			50%			30%			10%			0
Room	50%	30%	10%	50%	30%	10%	50%	30%	10%	50%	30%	10%	50%	30%	10%	0
Room	20%			20%			20%			20%			20%			0
Room	Coefficients of Utilization(CU)															
0.0	.83	.83	.83	.81	.81	.81	.77	.77	.77	.74	.74	.74	.71	.71	.71	.69
1.0	.78	.76	.75	.76	.75	.74	.74	.73	.72	.71	.70	.69	.69	.68	.68	.66
2.0	.74	.71	.69	.72	.70	.69	.70	.69	.67	.68	.67	.66	.66	.65	.64	.63
3.0	.70	.67	.65	.69	.66	.64	.67	.65	.63	.66	.64	.62	.64	.63	.61	.61
4.0	.67	.64	.61	.66	.63	.61	.64	.62	.60	.63	.61	.59	.62	.60	.59	.58
5.0	.64	.60	.58	.63	.60	.58	.62	.59	.57	.61	.58	.57	.60	.58	.56	.55
6.0	.61	.57	.55	.60	.57	.55	.59	.57	.55	.58	.56	.54	.58	.56	.54	.53
7.0	.58	.55	.53	.58	.55	.52	.57	.54	.52	.56	.54	.52	.56	.53	.52	.51
8.0	.56	.53	.50	.56	.52	.50	.55	.52	.50	.54	.52	.50	.54	.51	.50	.49
9.0	.54	.50	.48	.53	.50	.48	.53	.50	.48	.52	.50	.48	.52	.49	.48	.47
10.0	.52	.49	.46	.51	.48	.46	.51	.48	.46	.50	.48	.46	.50	.48	.46	.45



C Range: 0 - 360DEG

C Interval: For a lens beam angle of 36°

Test Speed: HIGH

Temperature: 25.3

Operators: zoe

Test Date: 2024-8-20

Range: 0 - 180DEG

Interval: 1.0DEG

Test System:EVERFINE GO-SPEX500 V1 SYSTEM V2.00.461

Humidity: 65.0%

Test Distance:3.160m [K=1.0000]

Remarks: LAMP:BXRH-30G10T0-G-83 Ra:90

LENS:PM-1084B 36R

LENS: PM-1084B 3
NO DRIVER: 500mA

NO DRIVER:500mA
30minutes warm-up

WEC AND CCEC

Test:U:17.644V I:0.5000A P:8.8220W PF:1.0000 Freq:49.99Hz Lamp Flux:1124.6x1 lm		
NAME: CTL-M-1.5-30K-36-SQ-AD	TYPE:	WEIGHT:
SPEC.: 3000K	DIM.:	SERIAL No.: 2408201133
MFR.: MERCURY LIGHTING	SUR.: 0.0016m2	Shielding Angle:

hcc	80%			70%			50%			30%			10%			0
hw	50%	30%	10%	50%	30%	10%	50%	30%	10%	50%	30%	10%	50%	30%	10%	0
hfc	20%			20%			20%			20%			20%			0
RCR	RCR:Room Cavity Ratio						Wall Exitance Coefficients(WEC)									
0.0																
1.0	.104	.059	.019	.100	.057	.018	.091	.052	.017	.083	.048	.015	.076	.044	.014	
2.0	.098	.054	.016	.094	.052	.016	.087	.048	.015	.080	.045	.014	.074	.042	.013	
3.0	.092	.049	.015	.089	.048	.014	.083	.045	.014	.077	.042	.013	.072	.040	.012	
4.0	.087	.045	.013	.084	.044	.013	.079	.042	.013	.074	.040	.012	.070	.038	.012	
5.0	.082	.042	.012	.080	.041	.012	.076	.039	.012	.072	.038	.011	.068	.036	.011	
6.0	.079	.039	.011	.077	.039	.011	.073	.037	.011	.069	.036	.011	.066	.035	.010	
7.0	.075	.037	.011	.073	.036	.010	.070	.035	.010	.067	.034	.010	.064	.033	.010	
8.0	.072	.035	.010	.070	.035	.010	.067	.034	.010	.065	.033	.009	.062	.032	.009	
9.0	.069	.033	.009	.068	.033	.009	.065	.032	.009	.062	.031	.009	.060	.031	.009	
10.0	.066	.032	.009	.065	.031	.009	.063	.031	.009	.060	.030	.009	.058	.029	.008	

hcc	80%			70%			50%			30%			10%			0
hw	50%	30%	10%	50%	30%	10%	50%	30%	10%	50%	30%	10%	50%	30%	10%	0
hfc	20%			20%			20%			20%			20%			0
RCR	RCR:Room Cavity Ratio						Ceiling Cavity Exitance Coefficients(CCEC)									
0.0	.132	.132	.132	.113	.113	.113	.077	.077	.077	.044	.044	.044	.014	.014	.014	
1.0	.117	.109	.102	.100	.094	.088	.069	.065	.061	.040	.037	.035	.013	.012	.011	
2.0	.106	.092	.081	.090	.079	.070	.062	.055	.049	.036	.032	.029	.011	.010	.009	
3.0	.096	.079	.065	.082	.068	.056	.056	.047	.040	.033	.028	.023	.010	.009	.008	
4.0	.088	.068	.053	.075	.059	.046	.052	.041	.033	.030	.024	.019	.010	.008	.006	
5.0	.081	.060	.044	.069	.052	.038	.048	.036	.027	.028	.021	.016	.009	.007	.005	
6.0	.075	.053	.037	.065	.046	.032	.045	.032	.023	.026	.019	.014	.008	.006	.004	
7.0	.070	.048	.032	.060	.041	.028	.042	.029	.020	.024	.017	.012	.008	.006	.004	
8.0	.066	.043	.027	.057	.037	.024	.039	.026	.017	.023	.015	.010	.007	.005	.003	
9.0	.062	.039	.024	.054	.034	.021	.037	.024	.015	.022	.014	.009	.007	.005	.003	
10.0	.059	.036	.021	.051	.031	.018	.035	.022	.013	.021	.013	.008	.007	.004	.003	

C Range: 0 - 360DEG

C Interval: For a lens beam angle of 36°

Test Speed: HIGH

Temperature:25.3

Operators:zoe

Test Date:2024-8-20

Range: 0 - 180DEG

Interval: 1.0DEG

Test System:EVERFINE GO-SPEX500_V1 SYSTEM V2.00.461

Humidity:65.0%

Test Distance:3.160m [K=1.0000]

Remarks: LAMP:BXRH-30G10T0-G-83 Ra:90

LENS:PM-1084B 36R

NO DRIVER:500mA

30minutes warm-up

UGR(Unified Glare Rating) Table

Test:U:17.644V I:0.5000A P:8.8220W PF:1.0000 Freq:49.99Hz Lamp Flux:1124.6x1 lm										
NAME: CTL-M-1.5-30K-36-SQ-AD					TYPE:			WEIGHT:		
SPEC.: 3000K					DIM.:			SERIAL No.: 2408201133		
MFR.: MERCURY LIGHTING					SUR.: 0.0016m2			Shielding Angle:		
ceiling/cavity	0.7	0.7	0.5	0.5	0.3	0.7	0.7	0.5	0.5	0.3
walls	0.5	0.3	0.5	0.3	0.3	0.5	0.3	0.5	0.3	0.3
working plane	0.2	0.2	0.2	0.2	0.2	0.2	0.2	0.2	0.2	0.2
Room dimensions	Viewed crosswise					Viewed endwise				
x = 2H y = 2H	12.0	12.8	12.3	12.9	13.1	10.6	11.4	10.8	11.5	11.7
3H	11.9	12.6	12.2	12.8	13.0	10.5	11.2	10.8	11.4	11.6
4H	11.9	12.5	12.1	12.7	12.9	10.5	11.2	10.8	11.4	11.6
6H	11.8	12.4	12.1	12.6	12.9	10.4	11.0	10.7	11.3	11.5
8H	11.7	12.3	12.0	12.6	12.8	10.4	11.0	10.7	11.2	11.5
12H	11.7	12.3	12.0	12.5	12.8	10.3	10.9	10.6	11.2	11.4
4H 2H	11.8	12.5	12.1	12.7	12.9	10.4	11.1	10.7	11.3	11.5
3H	11.7	12.3	12.0	12.5	12.8	10.3	10.9	10.6	11.2	11.4
4H	11.6	12.2	12.0	12.4	12.7	10.3	10.8	10.6	11.1	11.4
6H	11.5	12.0	11.9	12.3	12.7	10.2	10.7	10.6	11.0	11.3
8H	11.5	11.9	11.9	12.3	12.6	10.2	10.6	10.5	10.9	11.3
12H	11.4	11.8	11.8	12.2	12.6	10.1	10.5	10.5	10.9	11.3
8H 4H	11.5	11.9	11.9	12.3	12.6	10.2	10.6	10.6	11.0	11.3
6H	11.4	11.7	11.8	12.1	12.5	10.1	10.4	10.5	10.8	11.2
8H	11.3	11.6	11.8	12.1	12.5	10.0	10.3	10.5	10.7	11.2
12H	11.3	11.5	11.7	12.0	12.4	10.0	10.2	10.4	10.7	11.1
12H 4H	11.4	11.8	11.8	12.2	12.6	10.1	10.5	10.5	10.9	11.3
6H	11.3	11.6	11.8	12.1	12.5	10.0	10.3	10.5	10.7	11.2
8H	11.3	11.5	11.7	12.0	12.4	10.0	10.2	10.4	10.7	11.1
Variations with the observer position at spacings(CIE Pub.117) :										
S = 1.0H	+ 4.1 / - 8.3					+ 3.1 / - 7.3				
1.5H	+ 6.3 / - 7.2					+ 5.2 / - 5.9				
2.0H	+ 5.3 / - 3.8					+ 4.6 / - 4.8				

CIE Pub.117, 1125 lm Total Lamp Luminous Flux Correct (8log(F/F0) = 0.4)
 Area: 0.0016 m2

C Range: 0 - 360DEG

C Interval: For a lens beam angle of 36°

Test Speed: HIGH

Temperature:25.3

Operators:zoe

Test Date:2024-8-20

Range: 0 - 180DEG

Interval: 1.0DEG

Test System:EVERFINE GO-SPEX500_V1 SYSTEM V2.00.461

Humidity:65.0%

Test Distance:3.160m [K=1.0000]

Remarks: LAMP:BXRH-30G10T0-G-83 Ra:90

LENS:PM-1084B 36R

NO DRIVER:500mA

30minutes warm-up

UTILIZATION FACTORS TABLE

Test:U:17.644V I:0.5000A P:8.8220W PF:1.0000 Freq:49.99Hz Lamp Flux:1124.6x1 lm		
NAME: CTL-M-1.5-30K-36-SQ-AD	TYPE:	WEIGHT:
SPEC.: 3000K	DIM.:	SERIAL No.: 2408201133
MFR.: MERCURY LIGHTING	SUR.: 0.0016m2	Shielding Angle:

REFLECTANCE										
Ceiling	0.8	0.8	0.8	0.7	0.7	0.7	0.5	0.5	0.5	0
Walls	0.7	0.5	0.3	0.7	0.5	0.3	0.7	0.5	0.3	0
Working plane	0.2	0.2	0.2	0.2	0.2	0.2	0.2	0.2	0.2	0
ROOM INDEX	UTILIZATION FACTORS (PERCENT) $k(RI) \times RCR = 5$									
$k = 0.60$	63	59	57	63	59	57	62	59	57	54
0.80	68	64	62	67	64	62	67	64	62	59
1.00	70	67	65	70	67	65	69	66	64	62
1.25	73	70	68	72	69	67	71	69	67	64
1.50	75	72	70	74	71	69	72	70	69	66
2.00	76	74	72	75	73	71	73	71	70	66
2.50	77	75	73	76	74	72	74	72	71	67
3.00	78	76	74	77	75	73	75	73	72	68
4.00	79	78	76	78	77	75	76	74	73	69
5.00	80	79	78	79	78	77	76	75	74	69
ROOM INDEX	UF(total)									Direct
According to DIN EN 13032-2 2004			Suspended					SHRNOM = 1.25		

C Range: 0 - 360DEG

C Interval: For a lens beam angle of 36°

Test Speed: HIGH

Temperature: 25.3

Operators: zoe

Test Date: 2024-8-20

Range: 0 - 180DEG

Interval: 1.0DEG

Test System: EVERFINE GO-SPEX500_V1 SYSTEM V2.00.461

Humidity: 65.0%

Test Distance: 3.160m [K=1.0000]

Remarks: LAMP: BXRH-30G10T0-G-83 Ra: 90

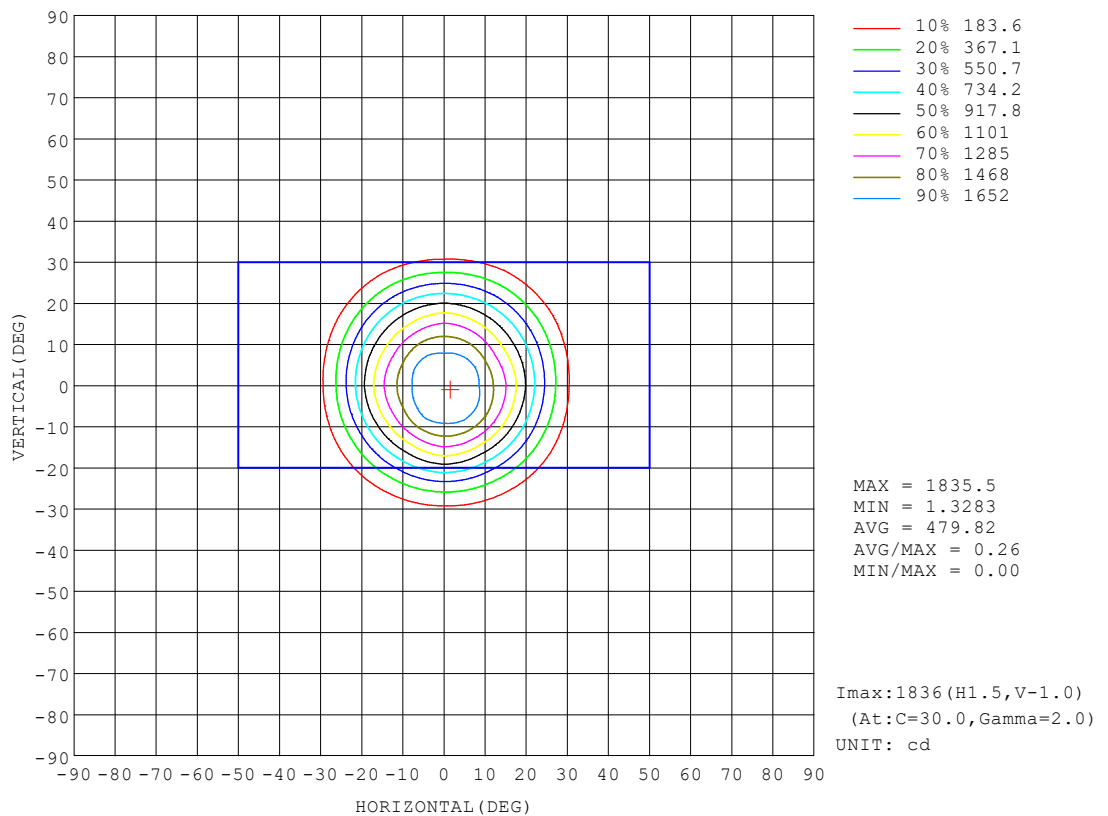
LENS: PM-1084B 36R

NO DRIVER: 500mA

30minutes warm-up

ISOCANDELA DIAGRAM

Test:U:17.644V I:0.5000A P:8.8220W PF:1.0000 Freq:49.99Hz Lamp Flux:1124.6x1 lm		
NAME: CTL-M-1.5-30K-36-SQ-AD	TYPE:	WEIGHT:
SPEC.: 3000K	DIM.:	SERIAL No.: 2408201133
MFR.: MERCURY LIGHTING	SUR.: 0.0016m2	Shielding Angle:



C Range: 0 - 360DEG

C Interval: For a lens beam angle of 36°

Test Speed: HIGH

Temperature:25.3

Operators:zoe

Test Date:2024-8-20

Range: 0 - 180DEG

Interval: 1.0DEG

Test System:EVERFINE GO-SPEX500_V1 SYSTEM V2.00.461

Humidity:65.0%

Test Distance:3.160m [K=1.0000]

Remarks: LAMP:BXRH-30G10T0-G-83 Ra:90

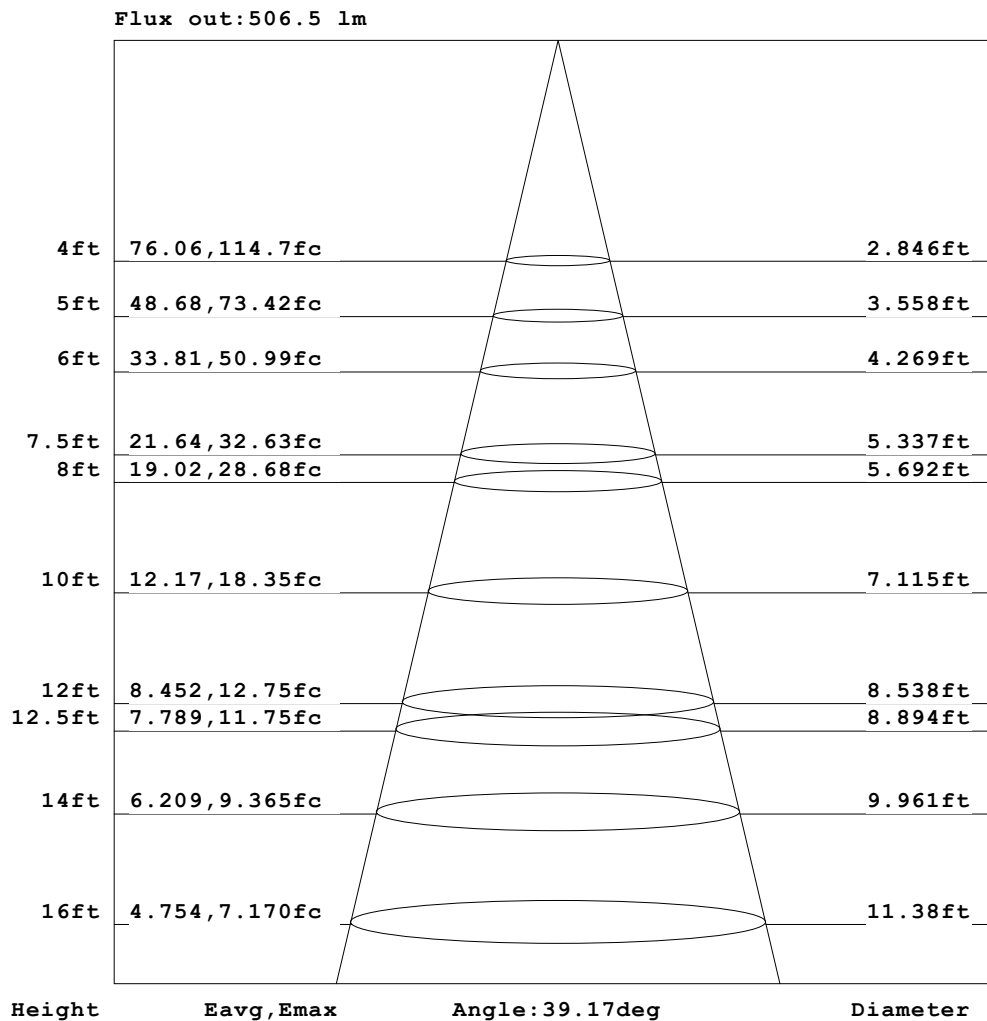
LENS:PM-1084B 36R

NO DRIVER:500mA

30minutes warm-up

AAI Figure

Test:U:17.644V I:0.5000A P:8.8220W PF:1.0000 Freq:49.99Hz Lamp Flux:1124.6x1 lm		
NAME: CTL-M-1.5-30K-36-SQ-AD	TYPE:	WEIGHT:
SPEC.: 3000K	DIM.:	SERIAL No.: 2408201133
MFR.: MERCURY LIGHTING	SUR.: 0.0016m2	Shielding Angle:



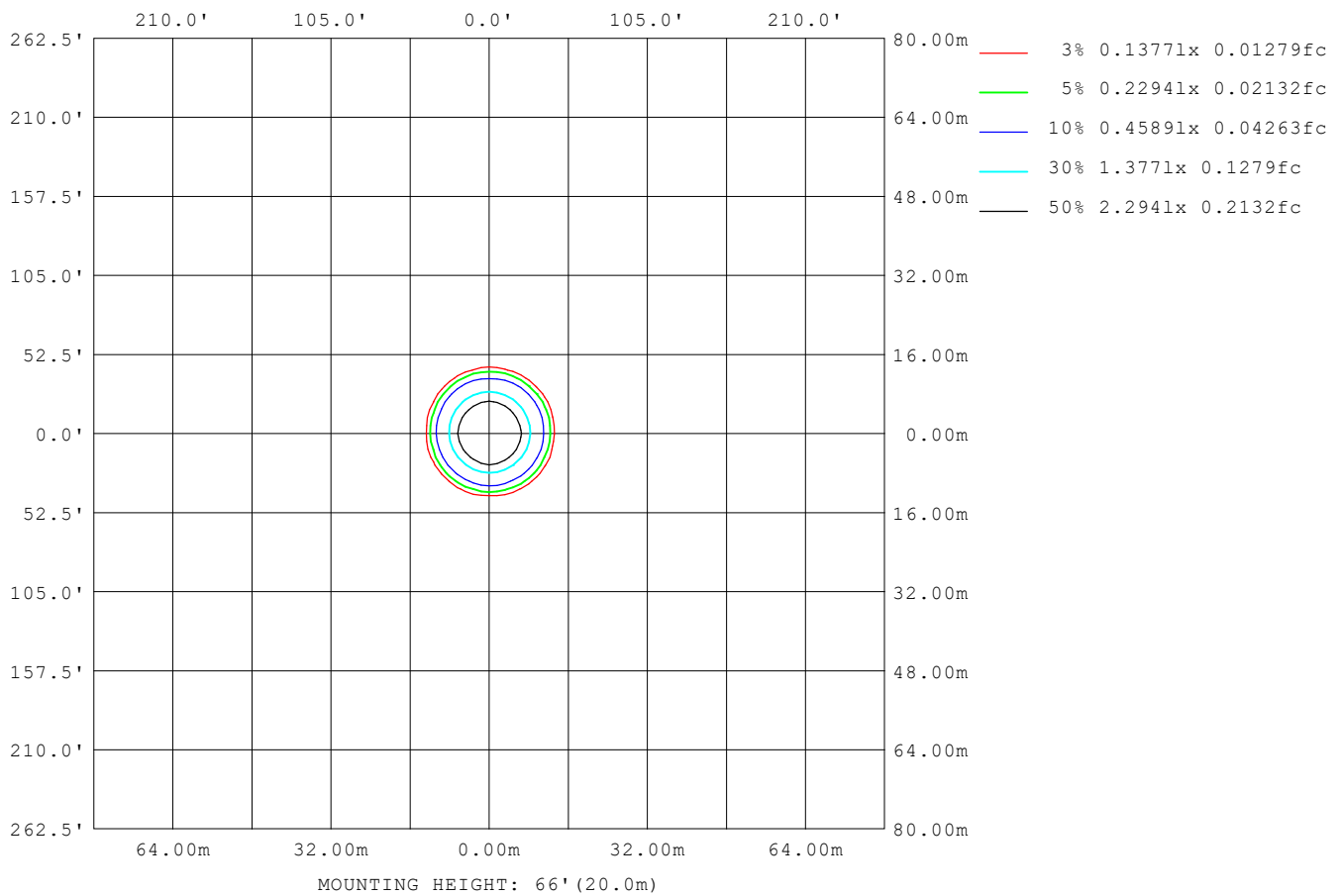
Note: The Curves indicate the illuminated area and the average illumination when the luminaire is at different distance.

C Range: 0 - 360DEG
 C Interval: For a lens beam angle of 36°
 Test Speed: HIGH
 Temperature: 25.3
 Operators: zoe
 Test Date: 2024-8-20

Range: 0 - 180DEG
 Interval: 1.0DEG
 Test System: EVERFINE GO-SPEX500_V1 SYSTEM V2.00.461
 Humidity: 65.0%
 Test Distance: 3.160m [K=1.0000]
 Remarks: LAMP: BXRH-30G10T0-G-83 Ra: 90
 LENS: PM-1084B 36R
 NO DRIVER: 500mA
 30minutes warm-up

ISOLUX DIAGRAM

Test: U:17.644V I:0.5000A P:8.8220W PF:1.0000 Freq:49.99Hz Lamp Flux: 1124.6x1 lm		
NAME: CTL-M-1.5-30K-36-SQ-AD	TYPE:	WEIGHT:
SPEC.: 3000K	DIM.:	SERIAL No.: 2408201133
MFR.: MERCURY LIGHTING	SUR.: 0.0016m ²	Shielding Angle:



C Range: 0 - 360DEG	Range: 0 - 180DEG
C Interval: For a lens beam angle of 36°	Interval: 1.0DEG
Test Speed: HIGH	Test System: EVERFINE GO-SPEX500_V1 SYSTEM V2.00.461
Temperature: 25.3	Humidity: 65.0%
Operators: zoe	Test Distance: 3.160m [K=1.0000]
Test Date: 2024-8-20	Remarks: LAMP: BXRH-30G10T0-G-83 Ra:90
	LENS: PM-1084B 36R
	NO DRIVER: 500mA
	30minutes warm-up

LED Avg.L Report

Test:U:17.644V I:0.5000A P:8.8220W PF:1.0000 Freq:49.99Hz Lamp Flux:1124.6x1 lm		
NAME: CTL-M-1.5-30K-36-SQ-AD	TYPE:	WEIGHT:
SPEC.: 3000K	DIM.:	SERIAL No.: 2408201133
MFR.: MERCURY LIGHTING	SUR.: 0.0016m2	Shielding Angle:

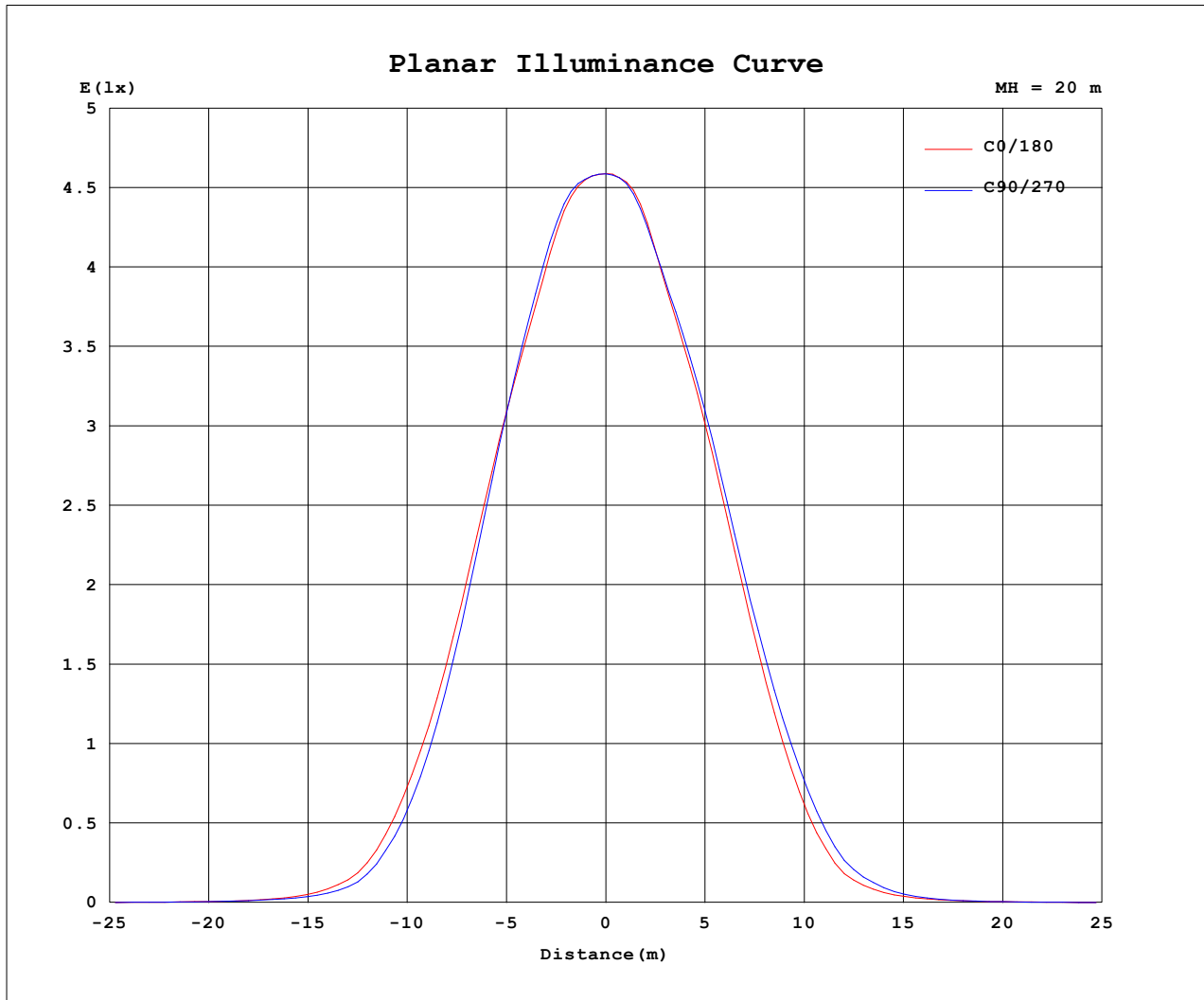
AvgL	cd/m2
L_0~180 (65) av	1263
L_0~180 (75) av	358
L_0~180 (85) av	288
L_90~270 (65) av	1221
L_90~270 (75) av	387
L_90~270 (85) av	314
L_45 (65) av	1255
L_45 (75) av	1170
L_45 (85) av	247

Standard: GB/T 29293-2012

C Range: 0 - 360DEG
 C Interval: For a lens beam angle of 36°
 Test Speed: HIGH
 Temperature:25.3
 Operators:zoe
 Test Date:2024-8-20

Range: 0 - 180DEG
 Interval: 1.0DEG
 Test System:EVERFINE GO-SPEX500_V1 SYSTEM V2.00.461
 Humidity:65.0%
 Test Distance:3.160m [K=1.0000]
 Remarks: LAMP:BXRH-30G10T0-G-83 Ra:90
 LENS:PM-1084B 36R
 NO DRIVER:500mA
 30minutes warm-up

Planar Illuminance Curve



C Range: 0 - 360DEG
C Interval: For a lens beam angle of 36°
Test Speed: HIGH
Temperature: 25.3
Operators: zoe
Test Date: 2024-8-20

Range: 0 - 180DEG
Interval: 1.0DEG
Test System: EVERFINE GO-SPEX500_V1 SYSTEM V2.00.461
Humidity: 65.0%
Test Distance: 3.160m [K=1.0000]
Remarks: LAMP: BXRH-30G10T0-G-83 Ra: 90
LENS: PM-1084B 36R
NO DRIVER: 500mA
30minutes warm-up

LUMINOUS DISTRIBUTION INTENSITY DATA

Test:U:17.644V I:0.5000A P:8.8220W PF:1.0000 Freq:49.99Hz Lamp Flux:1124.6x1 lm		
NAME: CTL-M-1.5-30K-36-SQ-AD	TYPE:	WEIGHT:
SPEC.: 3000K	DIM.:	SERIAL No.: 2408201133
MFR.: MERCURY LIGHTING	SUR.: 0.0016m2	Shielding Angle:

Table--1

UNIT: cd

C (DEG) (DEG)	0	30	60	90	120	150	180	210	240	270	300	330						
0	1835	1835	1835	1835	1835	1835	1835	1835	1835	1835	1835	1835						
5	1798	1811	1815	1811	1805	1791	1778	1792	1783	1767	1787	1797						
10	1574	1621	1635	1606	1603	1546	1538	1549	1569	1557	1570	1576						
15	1292	1287	1267	1279	1222	1218	1257	1235	1252	1296	1272	1243						
20	906	862	824	840	800	814	863	875	899	919	900	894						
25	514	479	438	427	413	424	457	498	531	538	547	536						
30	203	196	171	150	153	157	153	193	223	217	241	235						
35	62.4	55.3	49.0	43.6	42.0	43.4	47.1	50.6	61.5	68.5	67.9	67.9						
40	20.7	19.4	18.6	17.0	16.3	17.0	16.5	16.7	20.2	19.5	21.0	21.2						
45	8.25	8.71	8.54	7.41	7.46	7.71	7.00	7.44	7.95	6.91	7.93	8.77						
50	3.22	4.02	3.86	2.99	3.41	3.55	2.87	3.51	3.50	2.53	3.48	3.81						
55	1.48	1.62	1.54	1.22	1.39	1.53	1.40	1.51	1.45	1.23	1.47	1.59						
60	1.10	1.03	0.93	0.91	0.92	0.99	1.04	1.03	0.96	0.97	1.03	1.08						
65	0.87	0.86	0.83	0.84	0.84	0.85	0.84	0.85	0.81	0.82	0.86	0.89						
70	0.74	0.73	0.79	0.92	0.81	0.75	0.73	0.64	0.63	0.66	0.63	0.68						
75	0.15	0.49	0.66	0.15	0.68	0.49	0.15	0.38	0.26	0.17	0.29	0.34						
80	0.08	0.07	0.07	0.07	0.07	0.07	0.08	0.09	0.09	0.10	0.09	0.08						
85	0.04	0.03	0.03	0.04	0.03	0.03	0.04	0.04	0.04	0.05	0.04	0.03						
90	0.00	0.00	0.00	0.00	0.00	0.00	0.00	0.00	0.00	0.00	0.00	0.00						
95	0.00	0.00	0.00	0.00	0.00	0.00	0.00	0.00	0.00	0.00	0.00	0.00						
100	0.00	0.00	0.00	0.00	0.00	0.00	0.00	0.00	0.00	0.00	0.00	0.00						
105	0.00	0.00	0.00	0.00	0.00	0.00	0.00	0.00	0.00	0.00	0.00	0.00						
110	0.00	0.00	0.00	0.00	0.00	0.00	0.00	0.00	0.00	0.00	0.00	0.00						
115	0.00	0.00	0.00	0.00	0.00	0.00	0.00	0.00	0.00	0.00	0.00	0.00						
120	0.00	0.00	0.00	0.00	0.00	0.00	0.00	0.00	0.00	0.00	0.00	0.00						
125	0.00	0.00	0.00	0.00	0.00	0.00	0.00	0.00	0.00	0.00	0.00	0.00						
130	0.00	0.00	0.00	0.00	0.00	0.00	0.00	0.00	0.00	0.00	0.00	0.00						
135	0.00	0.00	0.00	0.00	0.00	0.00	0.00	0.00	0.00	0.00	0.00	0.00						
140	0.00	0.00	0.00	0.00	0.00	0.00	0.00	0.00	0.00	0.00	0.00	0.00						
145	0.00	0.00	0.00	0.00	0.00	0.00	0.00	0.00	0.00	0.00	0.00	0.00						
150	0.00	0.00	0.00	0.00	0.00	0.00	0.00	0.00	0.00	0.00	0.00	0.00						
155	0.00	0.00	0.00	0.00	0.00	0.00	0.00	0.00	0.00	0.00	0.00	0.00						
160	0.00	0.00	0.00	0.00	0.00	0.00	0.00	0.00	0.00	0.00	0.00	0.00						
165	0.00	0.00	0.00	0.00	0.00	0.00	0.00	0.00	0.00	0.00	0.00	0.00						
170	0.00	0.00	0.00	0.00	0.00	0.00	0.00	0.00	0.00	0.00	0.00	0.00						
175	0.00	0.00	0.00	0.00	0.00	0.00	0.00	0.00	0.00	0.00	0.00	0.00						
180	0.00	0.00	0.00	0.00	0.00	0.00	0.00	0.00	0.00	0.00	0.00	0.00						

C Range: 0 - 360DEG

C Interval: For a lens beam angle of 36°

Test Speed: HIGH

Temperature:25.3

Operators:zoe

Test Date:2024-8-20

Range: 0 - 180DEG

Interval: 1.0DEG

Test System:EVERFINE GO-SPEX500_V1 SYSTEM V2.00.461

Humidity:65.0%

Test Distance:3.160m [K=1.0000]

Remarks: LAMP:BXRH-30G10T0-G-83 Ra:90

LENS:PM-1084B 36R

NO DRIVER:500mA

30minutes warm-up