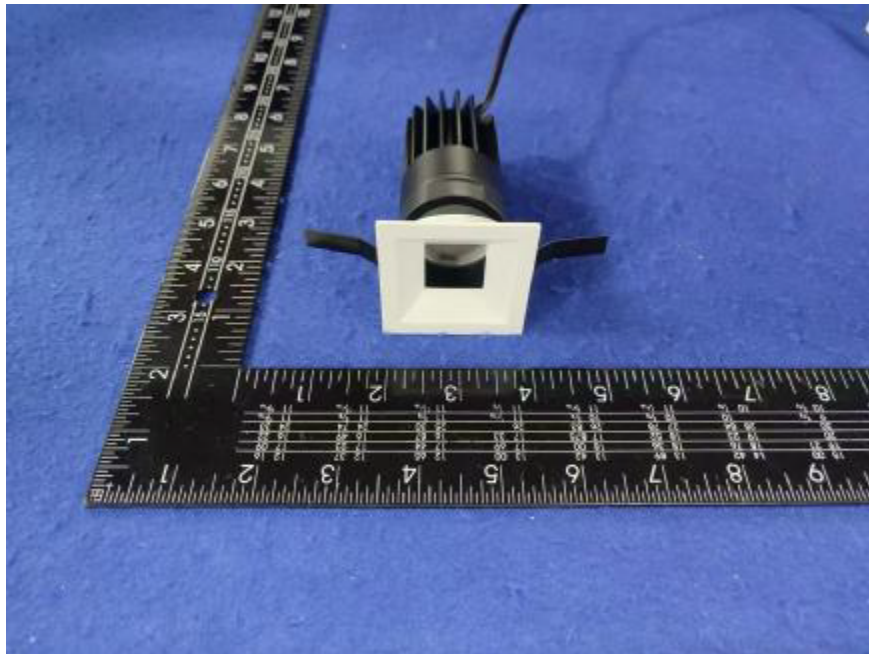


Photometric report for Flanged and Flangeless Trim



Light Output Ratio:	68.0%	
Luminaire Power:	8.822 W	
SHR Nominal:	0.00	Calculated using the TM5
SHR Maximum:	0.30	fine grid method.

C Range: 0 - 360DEG

C Interval: For a lens beam angle of 24°

Test Speed: HIGH

Temperature: 25.3

Operators: zoe

Test Date: 2024-8-20

Range: 0 - 180DEG

Interval: 1.0DEG

Test System: EVERFINE GO-SPEX500_V1 SYSTEM V2.00.461

Humidity: 65.0%

Test Distance: 3.160m [K=1.0000]

Remarks: LAMP: BXRH-30G10T0-G-83 Ra: 90

LENS: PM-1084A 24R

NO DRIVER: 500mA

30minutes warm-up

LUMINOUS INTENSITY DISTRIBUTION DIAGRAM

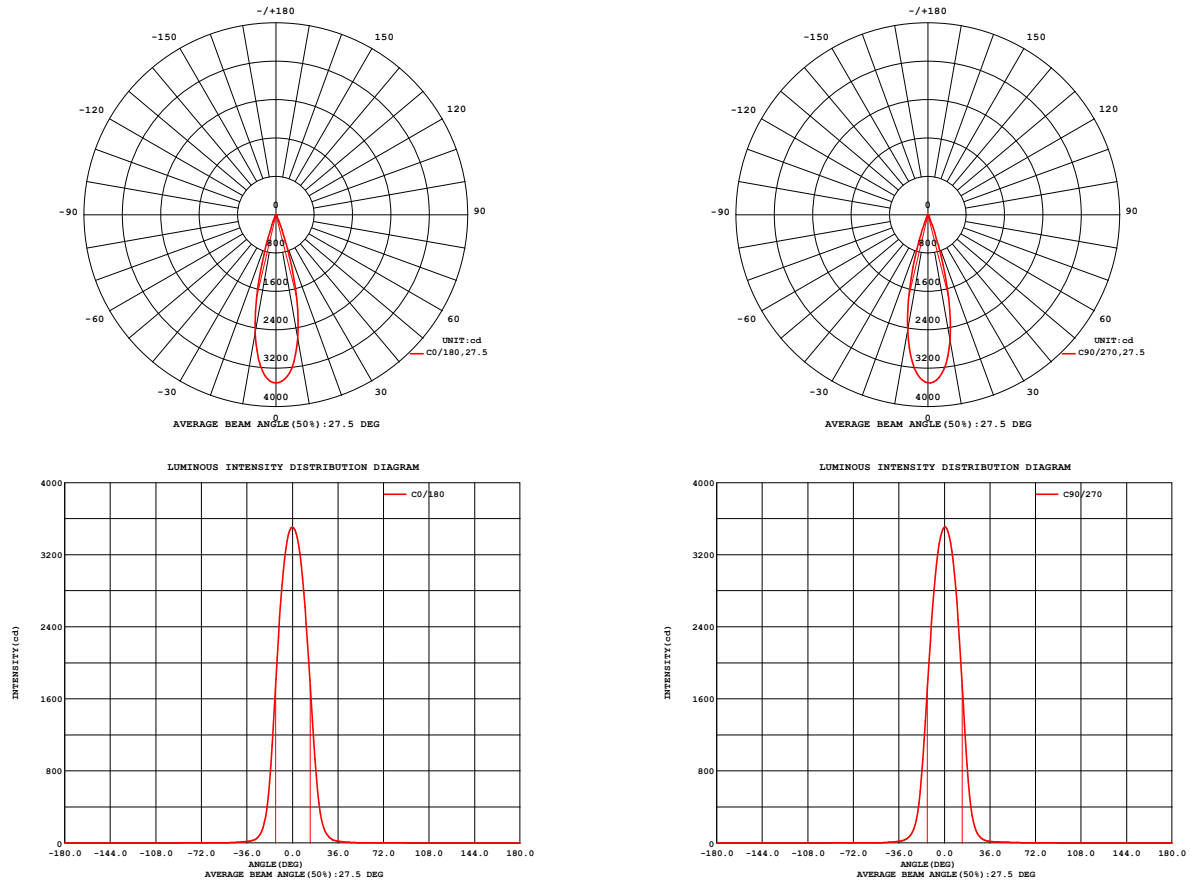


Fig. C0/C180

Fig. C90/C270

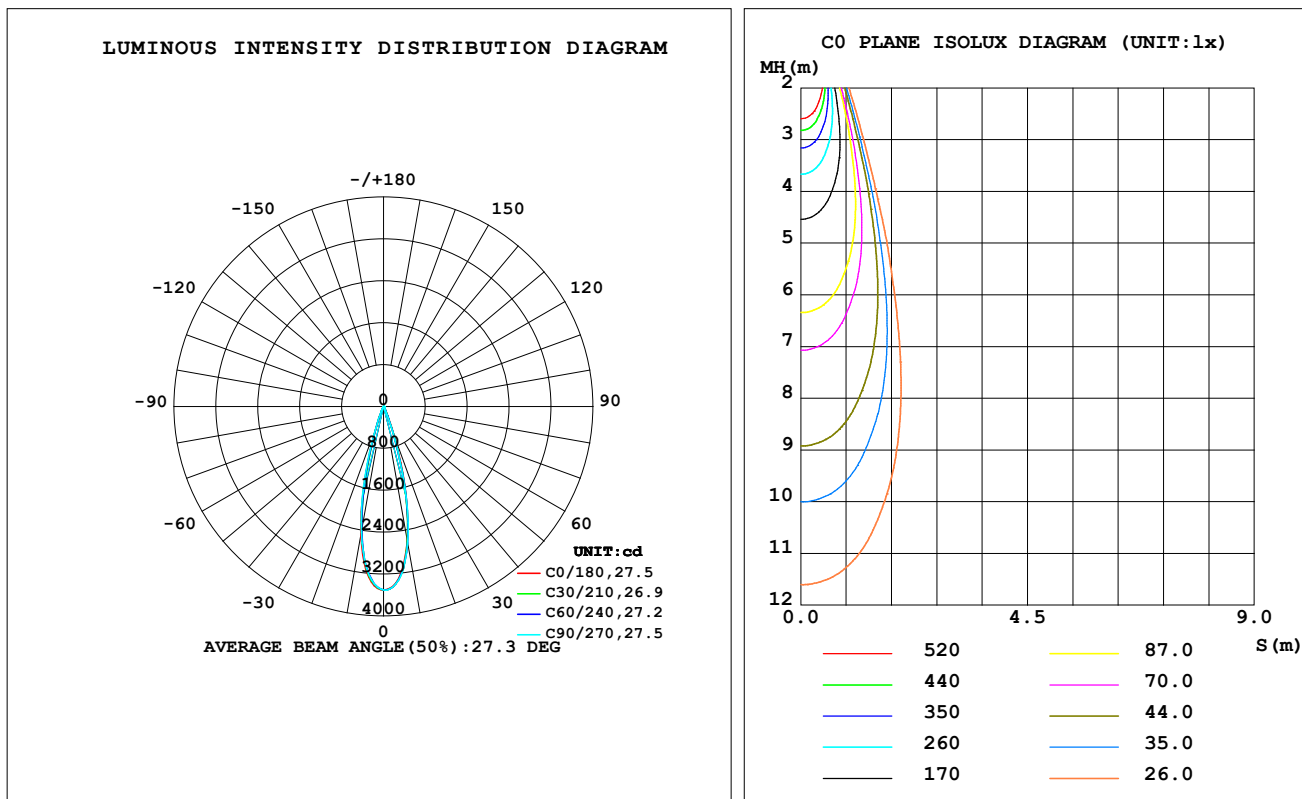
C Range: 0 - 360DEG
C Interval: For a lens beam angle of 24°
Test Speed: HIGH
Temperature: 25.3
Operators: zoe
Test Date: 2024-8-20

Range: 0 - 180DEG
Interval: 1.0DEG
Test System: EVERFINE GO-SPEX500_V1 SYSTEM V2.00.461
Humidity: 65.0%
Test Distance: 3.160m [K=1.0000]
Remarks: LAMP: BXRH-30G10T0-G-83 Ra: 90
LENS: PM-1084A 24R
NO DRIVER: 500mA
30minutes warm-up

LUMINAIRE PHOTOMETRIC TEST REPORT

Test:U:17.644V I:0.5000A P:8.8220W PF:1.0000 Freq:49.99Hz Lamp Flux:1124.6x1 lm		
NAME: CTL-M-1.5-30K-24-SQ-AD	TYPE:	WEIGHT:
SPEC.: 3000K	DIM.:	SERIAL No.: 2408201132
MFR.: MERCURY LIGHTING	SUR.: 0.0016m ²	Shielding Angle:

DATA OF LAMP		PHOTOMETRIC DATA Eff: 86.70 lm/W			
MODEL	Brideglux	I _{max} (cd)	3506	S/MH (C0/180)	0.42
NOMINAL POWER (W)	9	LOR (%)	68.0	S/MH (C90/270)	0.42
RATED VOLTAGE (V)	18	TOTAL FLUX (lm)	764.91	☒ UP, DN (C0-180)	0.0, 35.4
NOMINAL FLUX (lm)	1124.6	CIE CLASS	DIRECT	☒ UP, DN (C180-360)	0.0, 32.7
LAMPS INSIDE	1	☒ up (%)	0.0	CIBSE SHR NOM	0.00
TEST VOLTAGE (V)	18	☒ down (%)	68.0	CIBSE SHR MAX	0.30



C Range: 0 - 360DEG

C Interval: For a lens beam angle of 24°

Test Speed: HIGH

Temperature: 25.3

Operators: zoe

Test Date: 2024-8-20

Range: 0 - 180DEG

Interval: 1.0DEG

Test System: EVERFINE GO-SPEX500_V1 SYSTEM V2.00.461

Humidity: 65.0%

Test Distance: 3.160m [K=1.0000]

Remarks: LAMP: BXRH-30G10T0-G-83 Ra: 90

LENS: PM-1084A 24R

NO DRIVER: 500mA

30minutes warm-up

ZONAL FLUX DIAGRAM

ZONAL FLUX DIAGRAM:

°	C0	C45	C90	C135	C180	C225	C270	C315	°	zone	total	%lum,lamp
10	2615	2632	2662	2538	2501	2416	2449	2503	0- 10	289.2	289.2	37.8,25.7
20	578.0	545.8	525.7	419.9	389.4	383.2	443.6	497.1	10- 20	376.0	665.2	87,59.1
30	51.93	54.15	44.51	42.93	34.81	40.33	43.54	51.83	20- 30	75.19	740.4	96.8,65.8
40	13.30	12.56	13.39	11.29	11.28	11.11	11.92	12.08	30- 40	14.27	754.6	98.7,67.1
50	3.563	4.726	8.562	4.308	2.961	3.404	2.743	3.723	40- 50	5.736	760.4	99.4,67.6
60	1.345	2.166	3.635	2.060	1.332	1.320	1.224	1.340	50- 60	2.221	762.6	99.7,67.8
70	1.030	1.250	1.850	1.159	1.004	1.268	1.513	1.316	60- 70	1.535	764.1	99.9,67.9
80	0.1249	0.2650	0.3343	0.2538	0.1094	0.0855	0.0900	0.0977	70- 80	0.6573	764.8	100,68
90	0	0	0	0	0	0	0	0	80- 90	0.1139	764.9	100,68
100	0	0	0	0	0	0	0	0	90-100	0	764.9	100,68
110	0	0	0	0	0	0	0	0	100-110	0	764.9	100,68
120	0	0	0	0	0	0	0	0	110-120	0	764.9	100,68
130	0	0	0	0	0	0	0	0	120-130	0	764.9	100,68
140	0	0	0	0	0	0	0	0	130-140	0	764.9	100,68
150	0	0	0	0	0	0	0	0	140-150	0	764.9	100,68
160	0	0	0	0	0	0	0	0	150-160	0	764.9	100,68
170	0	0	0	0	0	0	0	0	160-170	0	764.9	100,68
180	0	0	0	0	0	0	0	0	170-180	0	764.9	100,68
DEG	LUMINOUS INTENSITY:cd									UNIT:lm		

C Range: 0 - 360DEG

C Interval: For a lens beam angle of 24°

Test Speed: HIGH

Temperature:25.3

Operators:zoe

Test Date:2024-8-20

Range: 0 - 180DEG

Interval: 1.0DEG

Test System:EVERFINE GO-SPEX500_V1 SYSTEM V2.00.461

Humidity:65.0%

Test Distance:3.160m [K=1.0000]

Remarks: LAMP:BXRH-30G10T0-G-83 Ra:90

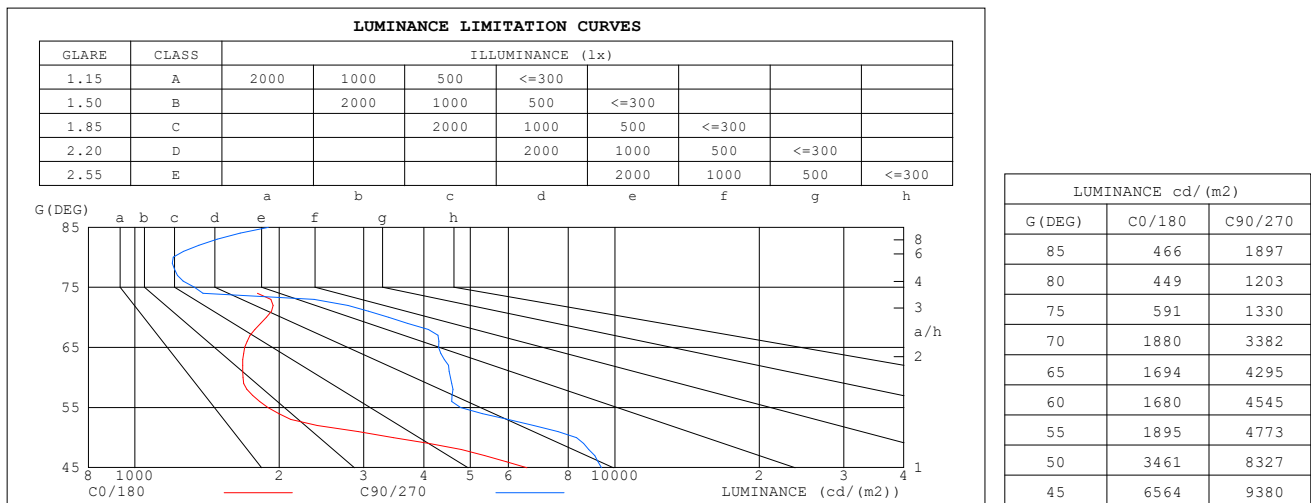
LENS:PM-1084A 24R

NO DRIVER:500mA

30minutes warm-up

LUMINANCE LIMITATION CURVES

Test:U:17.644V I:0.5000A P:8.8220W PF:1.0000 Freq:49.99Hz Lamp Flux:1124.6x1 lm		
NAME: CTL-M-1.5-30K-24-SQ-AD	TYPE:	WEIGHT:
SPEC.: 3000K	DIM.:	SERIAL No.: 2408201132
MFR.: MERCURY LIGHTING	SUR.: 0.0016m2	Shielding Angle:



C Range: 0 - 360DEG

C Interval: For a lens beam angle of 24°

Test Speed: HIGH

Temperature: 25.3

Operators: zoe

Test Date: 2024-8-20

Range: 0 - 180DEG

Interval: 1.0DEG

Test System: EVERFINE GO-SPEX500_V1 SYSTEM V2.00.461

Humidity: 65.0%

Test Distance: 3.160m [K=1.0000]

Remarks: LAMP: BXRH-30G10T0-G-83 Ra: 90

LENS: PM-1084A 24R

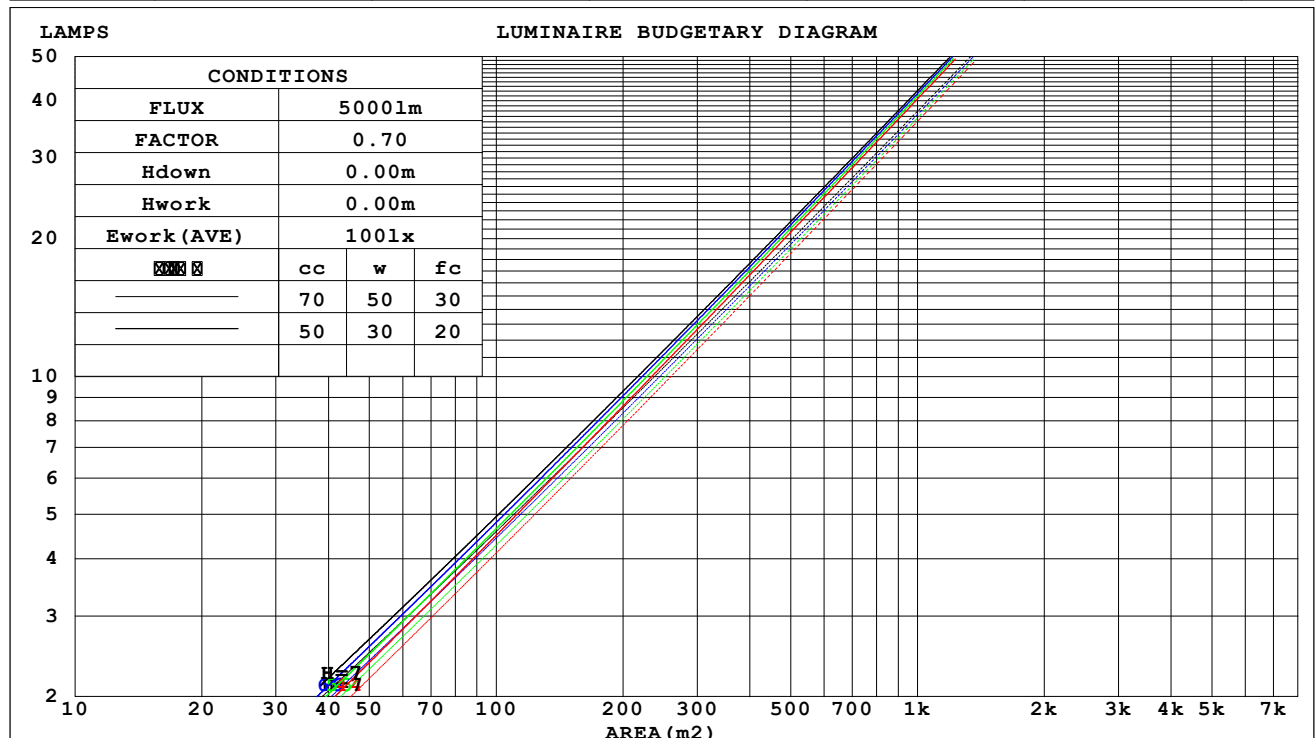
NO DRIVER: 500mA

30minutes warm-up

CU AND LUMINAIRE BUDGETARY ESTIMATE DIAGRAM

Test:U:17.644V I:0.5000A P:8.8220W PF:1.0000 Freq:49.99Hz Lamp Flux:1124.6x1 lm		
NAME: CTL-M-1.5-30K-24-SQ-AD	TYPE:	WEIGHT:
SPEC.: 3000K	DIM.:	SERIAL No.: 2408201132
MFR.: MERCURY LIGHTING	SUR.: 0.0016m2	Shielding Angle:

cc	80%			70%			50%			30%			10%			0
w	50%	30%	10%	50%	30%	10%	50%	30%	10%	50%	30%	10%	50%	30%	10%	0
fc	20%			20%			20%			20%			20%			0
RCR	RCR:Room Cavity Ratio Coefficients of Utilization(CU)															
0.0	.81	.81	.81	.79	.79	.79	.76	.76	.76	.72	.72	.72	.69	.69	.69	.68
1.0	.77	.76	.75	.75	.74	.73	.73	.72	.71	.70	.70	.69	.68	.68	.67	.66
2.0	.74	.72	.70	.72	.71	.69	.70	.69	.68	.68	.67	.66	.67	.66	.65	.64
3.0	.71	.68	.66	.70	.68	.66	.68	.66	.65	.67	.65	.64	.65	.64	.63	.62
4.0	.68	.65	.64	.67	.65	.63	.66	.64	.62	.65	.63	.62	.64	.62	.61	.60
5.0	.66	.63	.61	.65	.63	.61	.64	.62	.60	.63	.61	.60	.62	.61	.59	.59
6.0	.64	.61	.59	.63	.61	.59	.62	.60	.59	.62	.60	.58	.61	.59	.58	.57
7.0	.62	.59	.57	.61	.59	.57	.61	.58	.57	.60	.58	.57	.59	.58	.56	.56
8.0	.60	.57	.56	.60	.57	.56	.59	.57	.55	.59	.57	.55	.58	.56	.55	.54
9.0	.59	.56	.54	.58	.56	.54	.58	.55	.54	.57	.55	.54	.57	.55	.54	.53
10.0	.57	.54	.53	.57	.54	.53	.56	.54	.53	.56	.54	.52	.56	.54	.52	.52



C Range: 0 - 360DEG

C Interval: For a lens beam angle of 24°

Test Speed: HIGH

Temperature:25.3

Operators:zoe

Test Date:2024-8-20

Range: 0 - 180DEG

Interval: 1.0DEG

Test System:EVERFINE GO-SPEX500_V1 SYSTEM V2.00.461

Humidity:65.0%

Test Distance:3.160m [K=1.0000]

Remarks: LAMP:BXRH-30G10T0-G-83 Ra:90

LENS:PM-1084A 24R

NO DRIVER:500mA

30minutes warm-up

WEC AND CCEC

Test:U:17.644V I:0.5000A P:8.8220W PF:1.0000 Freq:49.99Hz Lamp Flux:1124.6x1 lm		
NAME: CTL-M-1.5-30K-24-SQ-AD	TYPE:	WEIGHT:
SPEC.: 3000K	DIM.:	SERIAL No.: 2408201132
MFR.: MERCURY LIGHTING	SUR.: 0.0016m2	Shielding Angle:

cc	80%			70%			50%			30%			10%			0	
w	50%	30%	10%	50%	30%	10%	50%	30%	10%	50%	30%	10%	50%	30%	10%	0	
fc	20%			20%			20%			20%			20%			0	
RCR	RCR:Room Cavity Ratio						Wall Exitance Coefficients(WEC)										
0.0																	
1.0	.090	.051	.016	.086	.049	.016	.077	.044	.014	.070	.040	.013	.062	.036	.012		
2.0	.083	.046	.014	.079	.044	.013	.072	.040	.013	.066	.037	.012	.060	.034	.011		
3.0	.077	.041	.012	.074	.040	.012	.068	.037	.011	.063	.035	.011	.058	.032	.010		
4.0	.072	.037	.011	.069	.036	.011	.065	.034	.010	.060	.032	.010	.056	.030	.009		
5.0	.068	.034	.010	.065	.034	.010	.061	.032	.009	.058	.030	.009	.054	.029	.009		
6.0	.064	.032	.009	.062	.031	.009	.058	.030	.009	.055	.029	.008	.052	.027	.008		
7.0	.061	.030	.008	.059	.029	.008	.056	.028	.008	.053	.027	.008	.050	.026	.008		
8.0	.058	.028	.008	.056	.028	.008	.054	.027	.008	.051	.026	.007	.049	.025	.007		
9.0	.055	.027	.007	.054	.026	.007	.051	.025	.007	.049	.025	.007	.047	.024	.007		
10.0	.053	.025	.007	.052	.025	.007	.050	.024	.007	.048	.024	.007	.046	.023	.007		

ꠁcc	80%			70%			50%			30%			10%			0
ꠁw	50%	30%	10%	50%	30%	10%	50%	30%	10%	50%	30%	10%	50%	30%	10%	0
ꠁfc	20%			20%			20%			20%			20%			0
RCR	RCR:Room Cavity Ratio						Ceiling Cavity Exitance Coefficients(CCEC)									
0.0	.130	.130	.130	.111	.111	.111	.076	.076	.076	.043	.043	.043	.014	.014	.014	
1.0	.114	.107	.101	.098	.092	.087	.067	.063	.060	.039	.037	.035	.012	.012	.011	
2.0	.102	.090	.081	.087	.078	.070	.060	.054	.049	.034	.031	.028	.011	.010	.009	
3.0	.091	.077	.066	.078	.066	.057	.054	.046	.040	.031	.027	.024	.010	.009	.008	
4.0	.083	.067	.054	.071	.057	.047	.049	.040	.033	.028	.023	.020	.009	.008	.006	
5.0	.075	.058	.045	.065	.050	.039	.045	.035	.028	.026	.021	.017	.008	.007	.005	
6.0	.069	.051	.038	.059	.044	.033	.041	.031	.024	.024	.018	.014	.008	.006	.005	
7.0	.064	.046	.033	.055	.040	.029	.038	.028	.020	.022	.016	.012	.007	.005	.004	
8.0	.059	.041	.028	.051	.036	.025	.035	.025	.017	.021	.015	.010	.007	.005	.003	
9.0	.056	.037	.025	.048	.032	.021	.033	.023	.015	.019	.013	.009	.006	.004	.003	
10.0	.052	.034	.022	.045	.029	.019	.031	.021	.013	.018	.012	.008	.006	.004	.003	

C Range: 0 - 360DEG

C Interval: For a lens beam angle of 24°

Test Speed: HIGH

Temperature:25.3

Operators:zoe

Test Date:2024-8-20

Range: 0 - 180DEG

Interval: 1.0DEG

Test System:EVERFINE GO-SPEX500_V1 SYSTEM V2.00.461

Humidity:65.0%

Test Distance:3.160m [K=1.0000]

Remarks: LAMP:BXRH-30G10T0-G-83 Ra:90

LENS:PM-1084A 24R

NO DRIVER:500mA

30minutes warm-up

UGR(Unified Glare Rating) Table

Test:U:17.644V I:0.5000A P:8.8220W PF:1.0000 Freq:49.99Hz Lamp Flux:1124.6x1 lm										
NAME: CTL-M-1.5-30K-24-SQ-AD					TYPE:			WEIGHT:		
SPEC.: 3000K					DIM.:			SERIAL No.: 2408201132		
MFR.: MERCURY LIGHTING					SUR.: 0.0016m2			Shielding Angle:		
ceiling/cavity	0.7	0.7	0.5	0.5	0.3	0.7	0.7	0.5	0.5	0.3
walls	0.5	0.3	0.5	0.3	0.3	0.5	0.3	0.5	0.3	0.3
working plane	0.2	0.2	0.2	0.2	0.2	0.2	0.2	0.2	0.2	0.2
Room dimensions	Viewed crosswise					Viewed endwise				
x = 2H y = 2H	6.5	7.1	6.7	7.3	7.4	7.7	8.3	7.9	8.4	8.6
3H	6.7	7.3	6.9	7.5	7.7	8.4	8.9	8.6	9.1	9.3
4H	6.8	7.3	7.1	7.6	7.8	8.4	9.0	8.7	9.2	9.4
6H	6.7	7.3	7.0	7.5	7.7	8.4	8.9	8.7	9.1	9.4
8H	6.7	7.2	7.0	7.4	7.7	8.4	8.9	8.7	9.1	9.4
12H	6.7	7.1	7.0	7.4	7.7	8.4	8.9	8.7	9.1	9.4
4H 2H	6.6	7.2	6.9	7.4	7.6	7.7	8.2	7.9	8.4	8.6
3H	6.9	7.4	7.2	7.7	7.9	8.5	9.0	8.8	9.2	9.5
4H	7.0	7.5	7.4	7.8	8.1	8.6	9.0	8.9	9.3	9.6
6H	7.0	7.4	7.4	7.7	8.1	8.6	9.0	8.9	9.3	9.6
8H	7.0	7.3	7.3	7.7	8.0	8.6	8.9	9.0	9.3	9.6
12H	6.9	7.3	7.3	7.6	8.0	8.6	8.9	9.0	9.3	9.7
8H 4H	7.1	7.4	7.4	7.8	8.1	8.5	8.9	8.9	9.2	9.6
6H	7.0	7.3	7.4	7.7	8.1	8.5	8.8	8.9	9.2	9.6
8H	7.0	7.3	7.4	7.7	8.1	8.5	8.8	9.0	9.2	9.6
12H	6.9	7.2	7.4	7.6	8.1	8.6	8.8	9.0	9.2	9.7
12H 4H	7.0	7.3	7.4	7.7	8.1	8.5	8.8	8.9	9.2	9.6
6H	7.0	7.2	7.4	7.7	8.1	8.5	8.7	8.9	9.2	9.6
8H	6.9	7.2	7.4	7.6	8.1	8.5	8.7	8.9	9.2	9.6
Variations with the observer position at spacings(CIE Pub.117) :										
S = 1.0H	+ 2.0 / - 3.1					+ 1.0 / - 1.2				
1.5H	+ 3.1 / - 2.7					+ 1.6 / - 1.9				
2.0H	+ 3.4 / - 2.5					+ 3.0 / - 2.0				

CIE Pub.117, 1125 lm Total Lamp Luminous Flux Correct (8log(F/F0) = 0.4)
 Area: 0.0016 m2

C Range: 0 - 360DEG	Range: 0 - 180DEG
C Interval: For a lens beam angle of 24°	Interval: 1.0DEG
Test Speed: HIGH	Test System:EVERFINE GO-SPEX500_V1 SYSTEM V2.00.461
Temperature:25.3	Humidity:65.0%
Operators:zoe	Test Distance:3.160m [K=1.0000]
Test Date:2024-8-20	Remarks: LAMP:BXRH-30G10T0-G-83 Ra:90
	LENS:PM-1084A 24R
	NO DRIVER:500mA
	30minutes warm-up

UTILIZATION FACTORS TABLE

Test:U:17.644V I:0.5000A P:8.8220W PF:1.0000 Freq:49.99Hz Lamp Flux:1124.6x1 lm		
NAME: CTL-M-1.5-30K-24-SQ-AD	TYPE:	WEIGHT:
SPEC.: 3000K	DIM.:	SERIAL No.: 2408201132
MFR.: MERCURY LIGHTING	SUR.: 0.0016m2	Shielding Angle:

REFLECTANCE										
Ceiling	0.8	0.8	0.8	0.7	0.7	0.7	0.5	0.5	0.5	0
Walls	0.7	0.5	0.3	0.7	0.5	0.3	0.7	0.5	0.3	0
Working plane	0.2	0.2	0.2	0.2	0.2	0.2	0.2	0.2	0.2	0
ROOM INDEX	UTILIZATION FACTORS (PERCENT) $k(RI) \times RCR = 5$									
$k = 0.60$	62	58	55	61	58	55	61	57	55	53
0.80	66	63	61	66	63	61	65	62	60	58
1.00	69	66	63	68	65	63	67	65	63	60
1.25	71	68	66	71	68	66	69	67	65	63
1.50	73	70	68	72	70	68	71	69	67	64
2.00	75	72	70	74	71	70	72	70	69	65
2.50	76	73	71	75	72	71	73	71	70	66
3.00	77	74	73	75	73	72	73	72	71	66
4.00	78	76	75	76	75	74	74	73	72	67
5.00	79	77	76	77	76	75	75	74	73	68
ROOM INDEX	UF(total)									Direct
According to DIN EN 13032-2 2004			Suspended					SHRNOM = 1.25		

C Range: 0 - 360DEG

C Interval: For a lens beam angle of 24°

Test Speed: HIGH

Temperature: 25.3

Operators: zoe

Test Date: 2024-8-20

Range: 0 - 180DEG

Interval: 1.0DEG

Test System: EVERFINE GO-SPEX500_V1 SYSTEM V2.00.461

Humidity: 65.0%

Test Distance: 3.160m [K=1.0000]

Remarks: LAMP: BXRH-30G10T0-G-83 Ra: 90

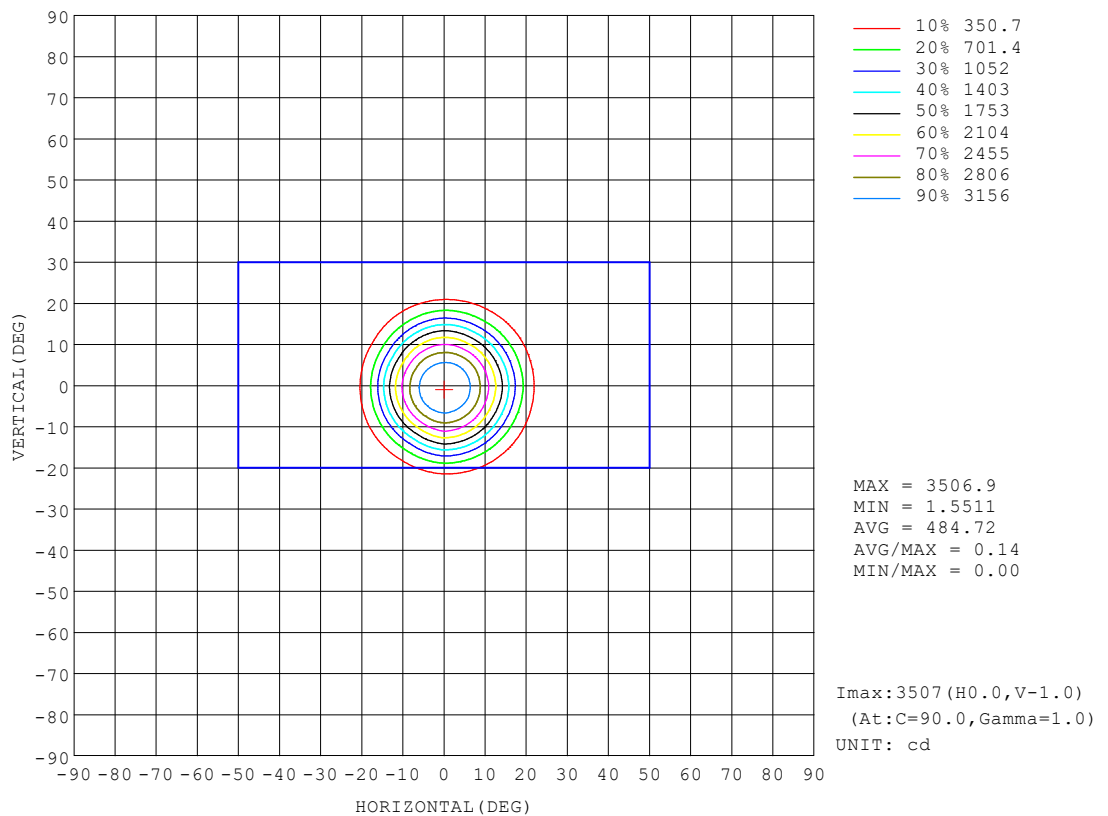
LENS: PM-1084A 24R

NO DRIVER: 500mA

30minutes warm-up

ISOCANDELA DIAGRAM

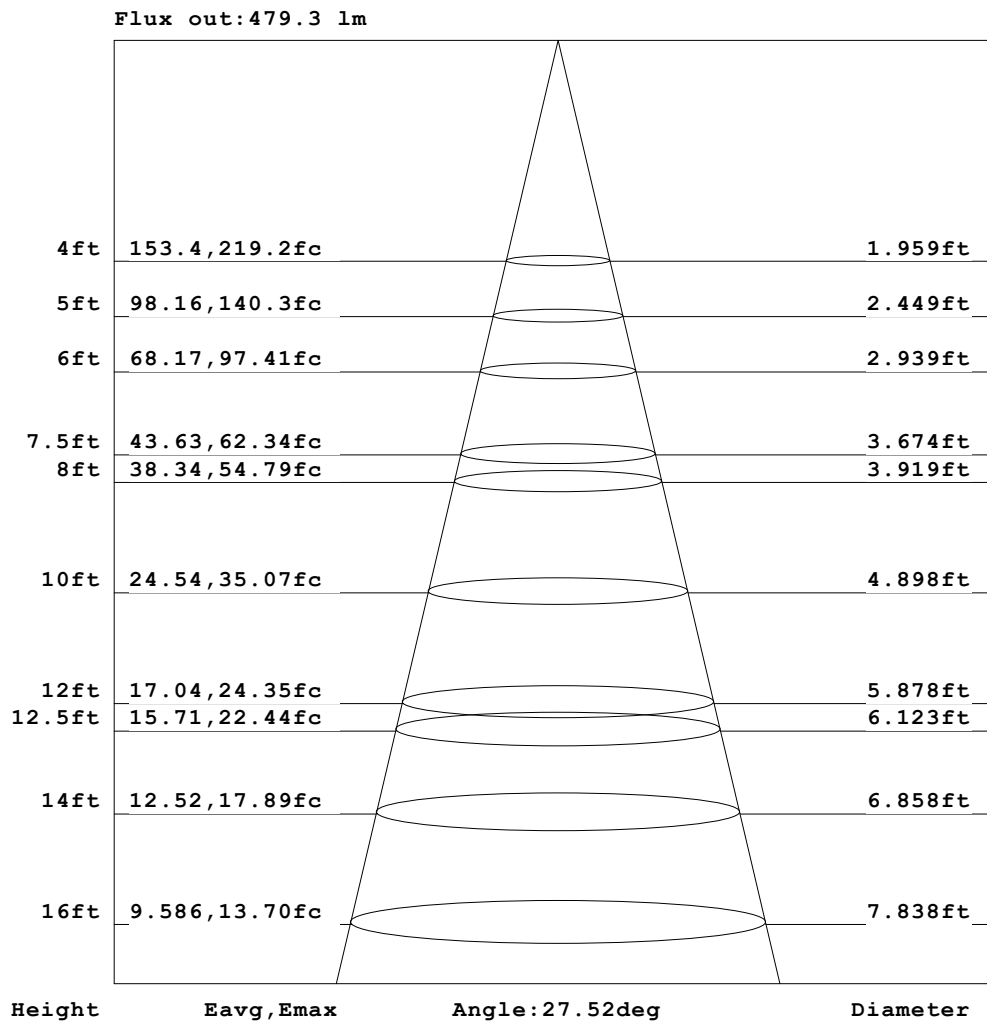
Test:U:17.644V I:0.5000A P:8.8220W PF:1.0000 Freq:49.99Hz Lamp Flux:1124.6x1 lm		
NAME: CTL-M-1.5-30K-24-SQ-AD	TYPE:	WEIGHT:
SPEC.: 3000K	DIM.:	SERIAL No.: 2408201132
MFR.: MERCURY LIGHTING	SUR.: 0.0016m2	Shielding Angle:



C Range: 0 - 360DEG	Range: 0 - 180DEG
C Interval: For a lens beam angle of 24°	Interval: 1.0DEG
Test Speed: HIGH	Test System: EVERFINE GO-SPEX500_V1 SYSTEM V2.00.461
Temperature: 25.3	Humidity: 65.0%
Operators: zoe	Test Distance: 3.160m [K=1.0000]
Test Date: 2024-8-20	Remarks: LAMP: BXRH-30G10T0-G-83 Ra: 90
	LENS: PM-1084A 24R
	NO DRIVER: 500mA
	30minutes warm-up

AAI Figure

Test:U:17.644V I:0.5000A P:8.8220W PF:1.0000 Freq:49.99Hz Lamp Flux:1124.6x1 lm		
NAME: CTL-M-1.5-30K-24-SQ-AD	TYPE:	WEIGHT:
SPEC.: 3000K	DIM.:	SERIAL No.: 2408201132
MFR.: MERCURY LIGHTING	SUR.: 0.0016m2	Shielding Angle:



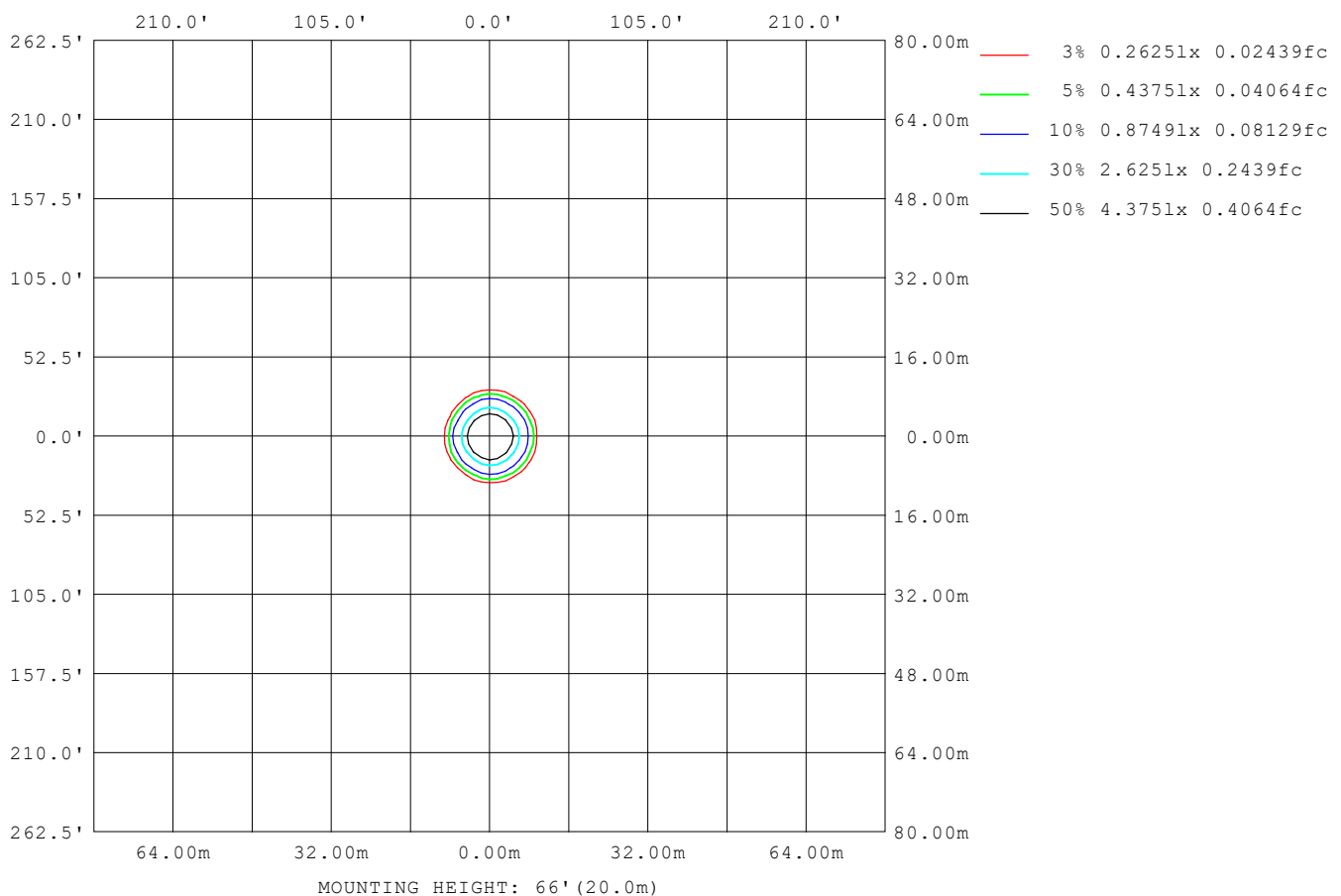
Note: The Curves indicate the illuminated area and the average illumination when the luminaire is at different distance.

C Range: 0 - 360DEG
 C Interval: For a lens beam angle of 24°
 Test Speed: HIGH
 Temperature: 25.3
 Operators: zoe
 Test Date: 2024-8-20

Range: 0 - 180DEG
 Interval: 1.0DEG
 Test System: EVERFINE GO-SPEX500_V1 SYSTEM V2.00.461
 Humidity: 65.0%
 Test Distance: 3.160m [K=1.0000]
 Remarks: LAMP: BXRH-30G10T0-G-83 Ra: 90
 LENS: PM-1084A 24R
 NO DRIVER: 500mA
 30minutes warm-up

ISOLUX DIAGRAM

Test: U:17.644V I:0.5000A P:8.8220W PF:1.0000 Freq:49.99Hz Lamp Flux: 1124.6x1 lm		
NAME: CTL-M-1.5-30K-24-SQ-AD	TYPE:	WEIGHT:
SPEC.: 3000K	DIM.:	SERIAL No.: 2408201132
MFR.: MERCURY LIGHTING	SUR.: 0.0016m ²	Shielding Angle:


C Range: 0 - 360DEG

C Interval: For a lens beam angle of 24°

Test Speed: HIGH

Temperature: 25.3

Operators: zoe

Test Date: 2024-8-20

Range: 0 - 180DEG

Interval: 1.0DEG

Test System: EVERFINE GO-SPEX500_V1 SYSTEM V2.00.461

Humidity: 65.0%

Test Distance: 3.160m [K=1.0000]

Remarks: LAMP: BXRH-30G10T0-G-83 Ra:90

LENS: PM-1084A 24R

NO DRIVER: 500mA

30minutes warm-up

LED Avg.L Report

Test:U:17.644V I:0.5000A P:8.8220W PF:1.0000 Freq:49.99Hz Lamp Flux:1124.6x1 lm		
NAME: CTL-M-1.5-30K-24-SQ-AD	TYPE:	WEIGHT:
SPEC.: 3000K	DIM.:	SERIAL No.: 2408201132
MFR.: MERCURY LIGHTING	SUR.: 0.0016m2	Shielding Angle:

AvgL	cd/m2
L_0~180 (65) av	1691
L_0~180 (75) av	518
L_0~180 (85) av	428
L_90~270 (65) av	3081
L_90~270 (75) av	862
L_90~270 (85) av	1121
L_45 (65) av	2236
L_45 (75) av	1675
L_45 (85) av	712

Standard: GB/T 29293-2012

C Range: 0 - 360DEG

C Interval: For a lens beam angle of 24°

Test Speed: HIGH

Temperature:25.3

Operators:zoe

Test Date:2024-8-20

Range: 0 - 180DEG

Interval: 1.0DEG

Test System:EVERFINE GO-SPEX500_V1 SYSTEM V2.00.461

Humidity:65.0%

Test Distance:3.160m [K=1.0000]

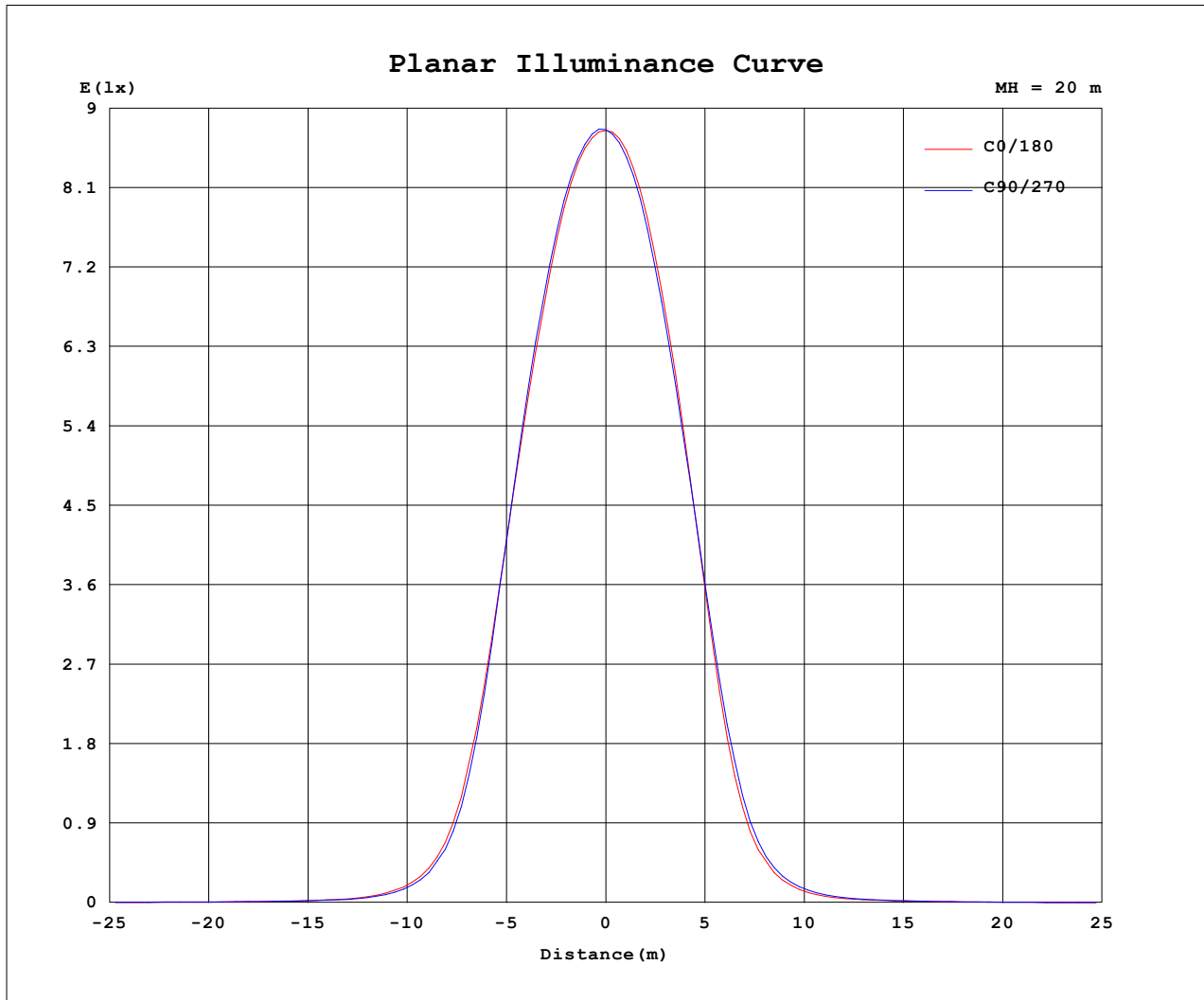
Remarks: LAMP:BXRH-30G10T0-G-83 Ra:90

LENS:PM-1084A 24R

NO DRIVER:500mA

30minutes warm-up

Planar Illuminance Curve



C Range: 0 - 360DEG

C Interval: For a lens beam angle of 24°

Test Speed: HIGH

Temperature: 25.3

Operators: zoe

Test Date: 2024-8-20

Range: 0 - 180DEG

Interval: 1.0DEG

Test System: EVERFINE GO-SPEX500_V1 SYSTEM V2.00.461

Humidity: 65.0%

Test Distance: 3.160m [K=1.0000]

Remarks: LAMP: BXRH-30G10T0-G-83 Ra: 90

LENS: PM-1084A 24R

NO DRIVER: 500mA

30minutes warm-up

LUMINOUS DISTRIBUTION INTENSITY DATA

Test:U:17.644V I:0.5000A P:8.8220W PF:1.0000 Freq:49.99Hz Lamp Flux:1124.6x1 lm		
NAME: CTL-M-1.5-30K-24-SQ-AD	TYPE:	WEIGHT:
SPEC.: 3000K	DIM.:	SERIAL No.: 2408201132
MFR.: MERCURY LIGHTING	SUR.: 0.0016m2	Shielding Angle:

Table--1

UNIT: cd

C (DEG) (DEG)	0	30	60	90	120	150	180	210	240	270	300	330						
0	3503	3503	3503	3503	3503	3503	3503	3503	3503	3503	3503	3503						
5	3303	3318	3319	3326	3315	3300	3267	3241	3213	3223	3242	3273						
10	2615	2621	2643	2662	2555	2520	2501	2418	2413	2449	2463	2543						
15	1583	1542	1558	1571	1371	1338	1319	1221	1281	1359	1375	1471						
20	578	554	538	526	429	410	389	363	403	444	468	526						
25	161	164	156	140	125	119	105	104	118	125	138	154						
30	51.9	55.8	52.5	44.5	44.7	41.2	34.8	38.2	42.5	43.5	50.8	52.9						
35	22.8	24.2	21.4	20.6	18.9	18.3	17.8	18.3	19.7	20.2	22.8	22.4						
40	13.3	12.7	12.4	13.4	11.6	11.0	11.3	10.9	11.3	11.9	11.8	12.3						
45	7.43	7.30	7.91	10.6	7.42	6.34	6.46	6.32	6.34	6.68	6.66	6.98						
50	3.56	4.03	5.43	8.56	5.09	3.52	2.96	3.61	3.20	2.74	3.68	3.77						
55	1.74	2.13	3.23	4.38	3.04	1.91	1.64	1.72	1.57	1.38	1.77	1.85						
60	1.35	1.59	2.74	3.64	2.59	1.53	1.33	1.35	1.29	1.22	1.32	1.36						
65	1.15	1.29	2.24	2.90	2.09	1.29	1.14	1.30	1.33	1.26	1.33	1.30						
70	1.03	1.04	1.47	1.85	1.30	1.02	1.00	1.15	1.38	1.51	1.40	1.23						
75	0.25	0.72	0.87	0.55	0.62	0.37	0.18	0.47	0.63	0.16	0.84	0.67						
80	0.12	0.24	0.29	0.33	0.29	0.21	0.11	0.09	0.08	0.09	0.09	0.10						
85	0.07	0.14	0.18	0.26	0.18	0.14	0.05	0.04	0.04	0.05	0.04	0.05						
90	0.00	0.00	0.00	0.00	0.00	0.00	0.00	0.00	0.00	0.00	0.00	0.00						
95	0.00	0.00	0.00	0.00	0.00	0.00	0.00	0.00	0.00	0.00	0.00	0.00						
100	0.00	0.00	0.00	0.00	0.00	0.00	0.00	0.00	0.00	0.00	0.00	0.00						
105	0.00	0.00	0.00	0.00	0.00	0.00	0.00	0.00	0.00	0.00	0.00	0.00						
110	0.00	0.00	0.00	0.00	0.00	0.00	0.00	0.00	0.00	0.00	0.00	0.00						
115	0.00	0.00	0.00	0.00	0.00	0.00	0.00	0.00	0.00	0.00	0.00	0.00						
120	0.00	0.00	0.00	0.00	0.00	0.00	0.00	0.00	0.00	0.00	0.00	0.00						
125	0.00	0.00	0.00	0.00	0.00	0.00	0.00	0.00	0.00	0.00	0.00	0.00						
130	0.00	0.00	0.00	0.00	0.00	0.00	0.00	0.00	0.00	0.00	0.00	0.00						
135	0.00	0.00	0.00	0.00	0.00	0.00	0.00	0.00	0.00	0.00	0.00	0.00						
140	0.00	0.00	0.00	0.00	0.00	0.00	0.00	0.00	0.00	0.00	0.00	0.00						
145	0.00	0.00	0.00	0.00	0.00	0.00	0.00	0.00	0.00	0.00	0.00	0.00						
150	0.00	0.00	0.00	0.00	0.00	0.00	0.00	0.00	0.00	0.00	0.00	0.00						
155	0.00	0.00	0.00	0.00	0.00	0.00	0.00	0.00	0.00	0.00	0.00	0.00						
160	0.00	0.00	0.00	0.00	0.00	0.00	0.00	0.00	0.00	0.00	0.00	0.00						
165	0.00	0.00	0.00	0.00	0.00	0.00	0.00	0.00	0.00	0.00	0.00	0.00						
170	0.00	0.00	0.00	0.00	0.00	0.00	0.00	0.00	0.00	0.00	0.00	0.00						
175	0.00	0.00	0.00	0.00	0.00	0.00	0.00	0.00	0.00	0.00	0.00	0.00						
180	0.00	0.00	0.00	0.00	0.00	0.00	0.00	0.00	0.00	0.00	0.00	0.00						

C Range: 0 - 360DEG

C Interval: For a lens beam angle of 24°

Test Speed: HIGH

Temperature:25.3

Operators:zoe

Test Date:2024-8-20

Range: 0 - 180DEG

Interval: 1.0DEG

Test System:EVERFINE GO-SPEX500_V1 SYSTEM V2.00.461

Humidity:65.0%

Test Distance:3.160m [K=1.0000]

Remarks: LAMP:BXRH-30G10T0-G-83 Ra:90

LENS:PM-1084A 24R

NO DRIVER:500mA

30minutes warm-up