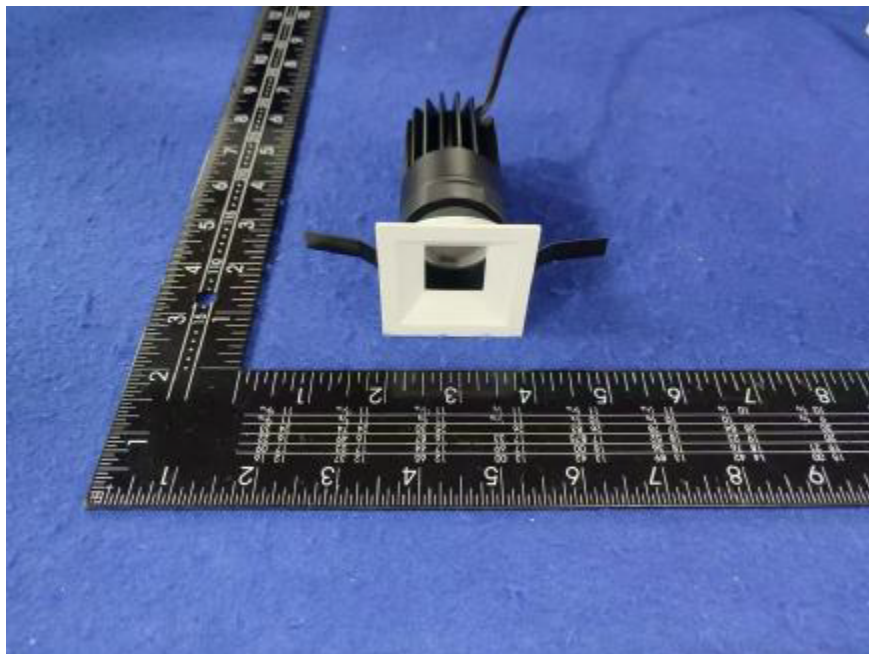


Photometric report for Flanged and Flangeless Trim



Light Output Ratio:	53.5%	
Luminaire Power:	8.823 W	
SHR Nominal:	0.00	Calculated using the TM5
SHR Maximum:	0.30	fine grid method.

C Range: 0 - 360DEG

C Interval: For a lens beam angle of 15°

Test Speed: HIGH

Temperature: 25.3 °C

Operators: zoe

Test Date: 2024-8-20

Range: 0 - 180DEG

Interval: 1.0DEG

Test System: EVERFINE GO-SPEX500\_V1 SYSTEM V2.00.461

Humidity: 65.0%

Test Distance: 3.160m [K=1.0000]

Remarks: LAMP: BXRH-30G10T0-G-83 Ra: 90

LENS: PM-1084 15R

NO DRIVER: 500mA

30minutes warm-up

LUMINOUS INTENSITY DISTRIBUTION DIAGRAM

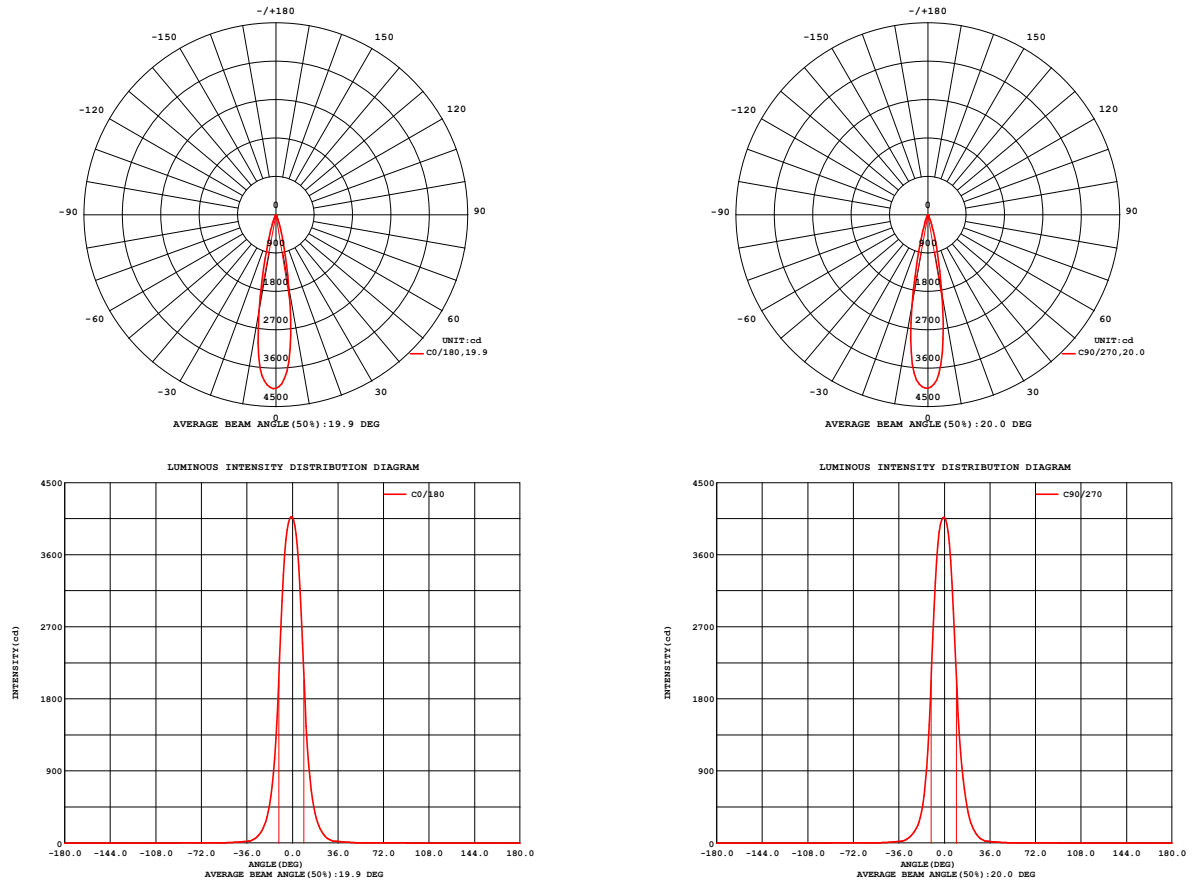


Fig. C0/C180

Fig. C90/C270

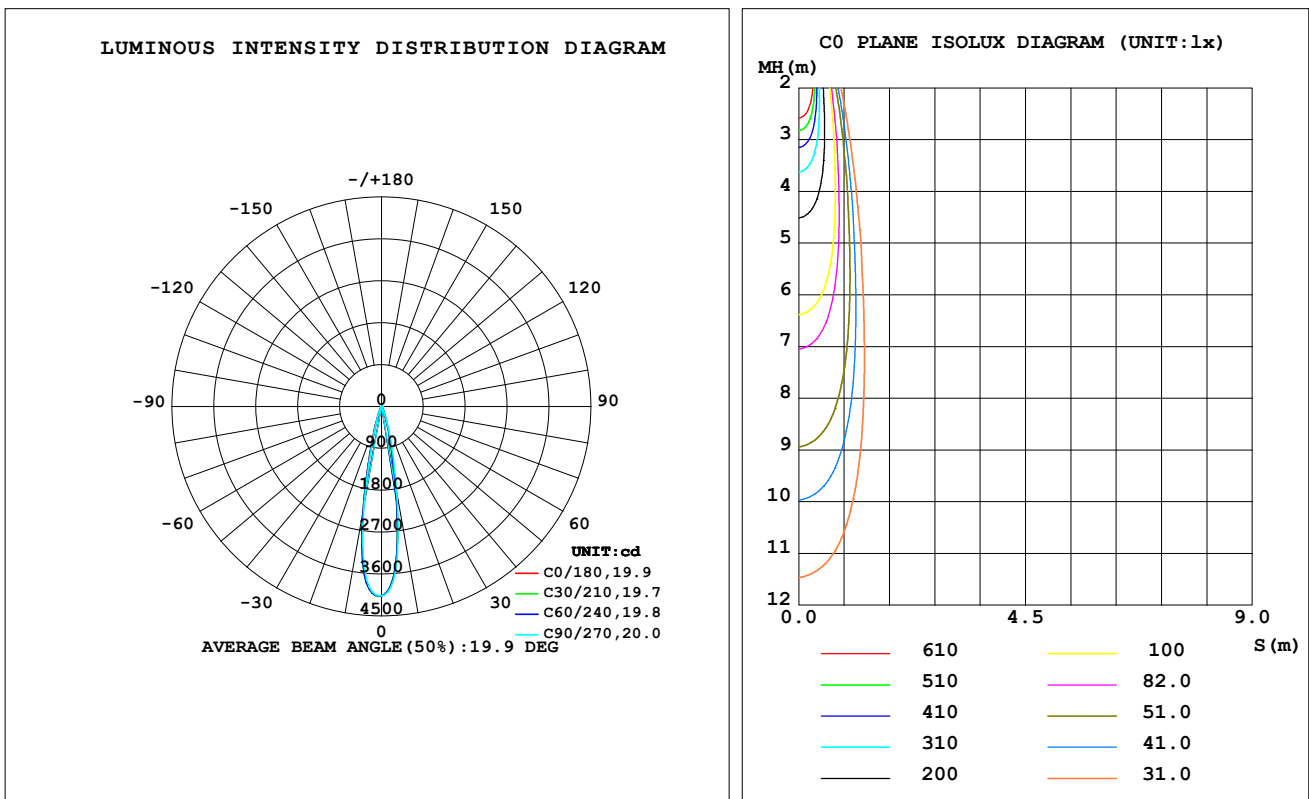
C Range: 0 - 360DEG  
C Interval: For a lens beam angle of 15°  
Test Speed: HIGH  
Temperature: 25.3 °C  
Operators: zoe  
Test Date: 2024-8-20

Range: 0 - 180DEG  
Interval: 1.0DEG  
Test System: EVERFINE GO-SPEX500\_V1 SYSTEM V2.00.461  
Humidity: 65.0%  
Test Distance: 3.160m [K=1.0000]  
Remarks: LAMP: BXRH-30G10T0-G-83 Ra: 90  
LENS: PM-1084 15R  
NO DRIVER: 500mA  
30minutes warm-up

**LUMINAIRE PHOTOMETRIC TEST REPORT**

Test:U:17.646V I:0.5000A P:8.8230W PF:1.0000 Freq:49.99Hz Lamp Flux:1124.6x1 lm		
NAME: CTL-M-1.5-30K-15-SQ-AD	TYPE:	WEIGHT:
SPEC.: 3000K	DIM.:	SERIAL No.: 2408201131
MFR.: MERCURY LIGHTING	SUR.: 0.0016m2	Shielding Angle:

DATA OF LAMP		PHOTOMETRIC DATA				Eff: 68.23 lm/W
MODEL	Brideglux	I <sub>max</sub> (cd)	4076	S/MH (C0/180)	0.35	
NOMINAL POWER (W)	9	LOR (%)	53.5	S/MH (C90/270)	0.33	
RATED VOLTAGE (V)	18	TOTAL FLUX (lm)	602.01	☒ UP, DN (C0-180)	0.0, 25.9	
NOMINAL FLUX (lm)	1124.6	CIE CLASS	DIRECT	☒ UP, DN (C180-360)	0.0, 27.6	
LAMPS INSIDE	1	☒ up (%)	0.0	CIBSE SHR NOM	0.00	
TEST VOLTAGE (V)	18	☒ down (%)	53.5	CIBSE SHR MAX	0.30	



C Range: 0 - 360DEG

C Interval: For a lens beam angle of 15°

Test Speed: HIGH

Temperature: 25.3 °C

Operators: zoe

Test Date: 2024-8-20

Range: 0 - 180DEG

Interval: 1.0DEG

Test System: EVERFINE GO-SPEX500\_V1 SYSTEM V2.00.461

Humidity: 65.0%

Test Distance: 3.160m [K=1.0000]

Remarks: LAMP: BXRH-30G10T0-G-83 Ra: 90

LENS: PM-1084 15R

NO DRIVER: 500mA

30minutes warm-up

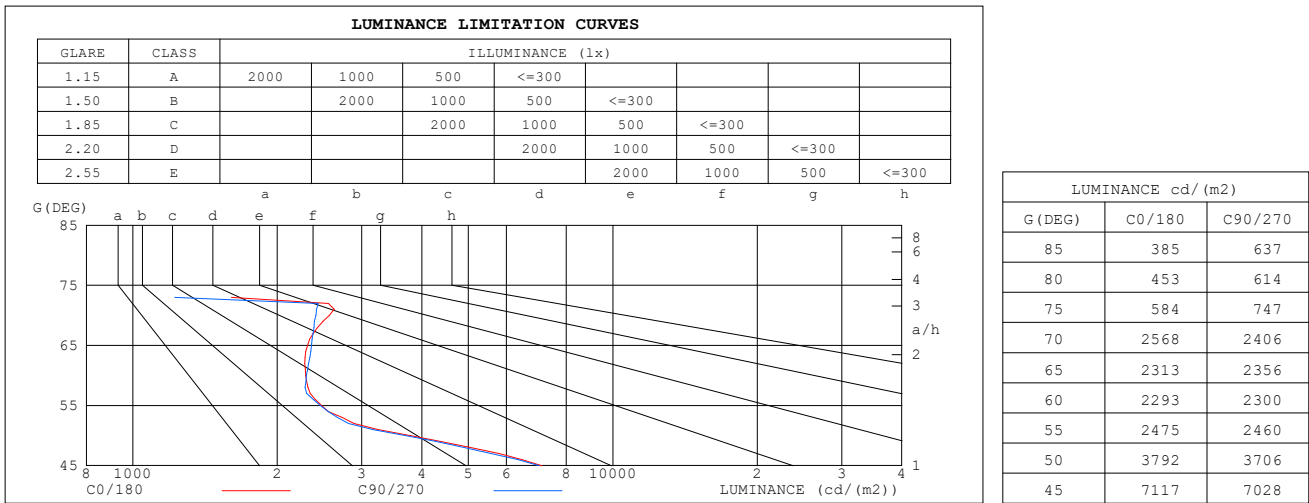
**ZONAL FLUX DIAGRAM**
**ZONAL FLUX DIAGRAM:**

°	C0	C45	C90	C135	C180	C225	C270	C315	°	zone	total	%lum,lamp
10	1769	1708	1916	2043	2296	2307	2182	1931	0- 10	292.4	292.4	48.6,26
20	256.8	274.1	305.0	316.6	320.7	288.3	261.8	255.0	10- 20	223.1	515.5	85.6,45.8
30	36.94	49.08	40.85	58.72	48.99	54.00	43.61	47.08	20- 30	60.18	575.7	95.6,51.2
40	13.55	12.46	13.43	14.08	15.28	13.59	13.25	12.58	30- 40	15.39	591.1	98.2,52.6
50	3.890	4.233	3.815	5.052	4.851	4.439	3.784	4.137	40- 50	6.351	597.4	99.2,53.1
60	1.829	1.702	1.842	1.895	1.922	1.581	1.595	1.583	50- 60	2.265	599.7	99.6,53.3
70	1.401	1.198	1.318	1.254	1.375	1.385	1.765	1.389	60- 70	1.506	601.2	99.9,53.5
80	0.1255	0.1481	0.1707	0.1601	0.1432	0.1251	0.1163	0.1128	70- 80	0.7330	601.9	100,53.5
90	0	0	0	0	0	0	0	0	80- 90	0.0707	602.0	100,53.5
100	0	0	0	0	0	0	0	0	90-100	0	602.0	100,53.5
110	0	0	0	0	0	0	0	0	100-110	0	602.0	100,53.5
120	0	0	0	0	0	0	0	0	110-120	0	602.0	100,53.5
130	0	0	0	0	0	0	0	0	120-130	0	602.0	100,53.5
140	0	0	0	0	0	0	0	0	130-140	0	602.0	100,53.5
150	0	0	0	0	0	0	0	0	140-150	0	602.0	100,53.5
160	0	0	0	0	0	0	0	0	150-160	0	602.0	100,53.5
170	0	0	0	0	0	0	0	0	160-170	0	602.0	100,53.5
180	0	0	0	0	0	0	0	0	170-180	0	602.0	100,53.5
DEG	LUMINOUS INTENSITY:cd									UNIT:lm		

**C Range: 0 - 360DEG**
**C Interval: For a lens beam angle of 15°**
**Test Speed: HIGH**
**Temperature:25.3℃**
**Operators:zoe**
**Test Date:2024-8-20**
**Range: 0 - 180DEG**
**Interval: 1.0DEG**
**Test System:EVERFINE GO-SPEX500\_V1 SYSTEM V2.00.461**
**Humidity:65.0%**
**Test Distance:3.160m [K=1.0000]**
**Remarks: LAMP:BXRH-30G10T0-G-83 Ra:90**
**LENS:PM-1084 15R**
**NO DRIVER:500mA**
**30minutes warm-up**

**LUMINANCE LIMITATION CURVES**

<b>Test:</b> U:17.646V I:0.5000A P:8.8230W PF:1.0000 Freq:49.99Hz <b>Lamp Flux:</b> 1124.6x1 lm		
<b>NAME:</b> CTL-M-1.5-30K-15-SQ-AD	<b>TYPE:</b>	<b>WEIGHT:</b>
<b>SPEC.:</b> 3000K	<b>DIM.:</b>	<b>SERIAL No.:</b> 2408201131
<b>MFR.:</b> MERCURY LIGHTING	<b>SUR.:</b> 0.0016m2	<b>Shielding Angle:</b>


**C Range:** 0 - 360DEG

**C Interval:** For a lens beam angle of 15°

**Test Speed:** HIGH

**Temperature:**25.3℃

**Operators:**zoe

**Test Date:**2024-8-20

**Range:** 0 - 180DEG

**Interval:** 1.0DEG

**Test System:**EVERFINE GO-SPEX500\_V1 SYSTEM V2.00.461

**Humidity:**65.0%

**Test Distance:**3.160m [K=1.0000]

**Remarks:** LAMP:BXRH-30G10T0-G-83 Ra:90

**LENS:**PM-1084 15R

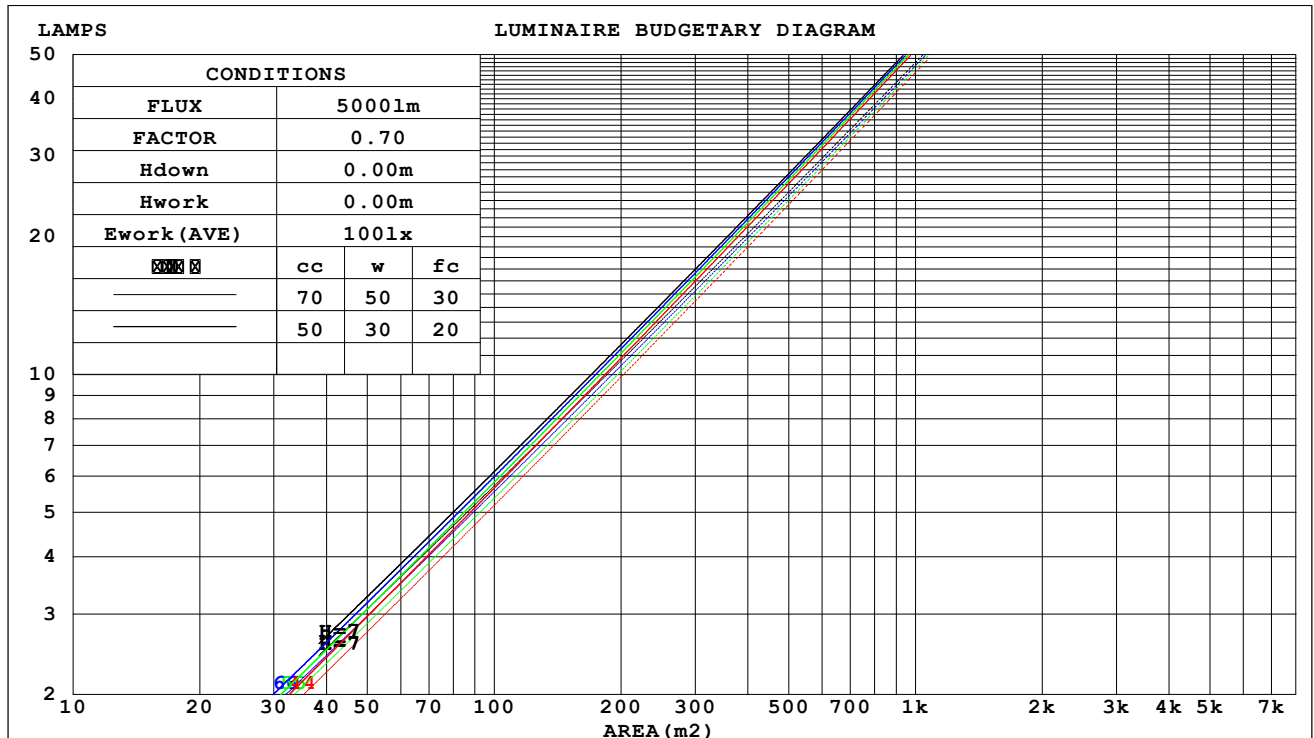
**NO DRIVER:**500mA

**30minutes warm-up**

## CU AND LUMINAIRE BUDGETARY ESTIMATE DIAGRAM

Test:U:17.646V I:0.5000A P:8.8230W PF:1.0000 Freq:49.99Hz Lamp Flux:1124.6x1 lm		
NAME: CTL-M-1.5-30K-15-SQ-AD	TYPE:	WEIGHT:
SPEC.: 3000K	DIM.:	SERIAL No.: 2408201131
MFR.: MERCURY LIGHTING	SUR.: 0.0016m2	Shielding Angle:

cc	80%			70%			50%			30%			10%			0														
w	50%	30%	10%	50%	30%	10%	50%	30%	10%	50%	30%	10%	50%	30%	10%	0														
fc	20%			20%			20%			20%			20%			0														
RCR	RCR:Room Cavity Ratio															Coefficients of Utilization(CU)														
0.0	.64	.64	.64	.62	.62	.62	.59	.59	.59	.57	.57	.57	.55	.55	.55	.54														
1.0	.61	.60	.59	.60	.59	.58	.57	.57	.56	.55	.55	.55	.54	.53	.53	.52														
2.0	.58	.57	.55	.57	.56	.55	.56	.55	.54	.54	.53	.52	.53	.52	.51	.51														
3.0	.56	.54	.53	.55	.54	.52	.54	.53	.52	.53	.52	.51	.52	.51	.50	.49														
4.0	.54	.52	.51	.53	.52	.50	.52	.51	.50	.51	.50	.49	.51	.50	.49	.48														
5.0	.52	.50	.49	.52	.50	.49	.51	.50	.48	.50	.49	.48	.50	.48	.48	.47														
6.0	.51	.49	.47	.51	.49	.47	.50	.48	.47	.49	.48	.47	.49	.47	.46	.46														
7.0	.50	.48	.46	.49	.47	.46	.49	.47	.46	.48	.47	.46	.48	.46	.45	.45														
8.0	.48	.46	.45	.48	.46	.45	.48	.46	.45	.47	.46	.45	.47	.45	.44	.44														
9.0	.47	.45	.44	.47	.45	.44	.47	.45	.44	.46	.45	.44	.46	.45	.44	.43														
10.0	.46	.44	.43	.46	.44	.43	.46	.44	.43	.45	.44	.43	.45	.44	.43	.42														



C Range: 0 - 360DEG

C Interval: For a lens beam angle of 15°

Test Speed: HIGH

Temperature:25.3 °C

Operators:zoe

Test Date:2024-8-20

Range: 0 - 180DEG

Interval: 1.0DEG

Test System:EVERFINE GO-SPEX500\_V1 SYSTEM V2.00.461

Humidity:65.0%

Test Distance:3.160m [K=1.0000]

Remarks: LAMP:BXRH-30G10T0-G-83 Ra:90

LENS:PM-1084 15R

NO DRIVER:500mA

30minutes warm-up

**WEC AND CCEC**

Test:U:17.646V I:0.5000A P:8.8230W PF:1.0000 Freq:49.99Hz Lamp Flux:1124.6x1 lm		
NAME: CTL-M-1.5-30K-15-SQ-AD	TYPE:	WEIGHT:
SPEC.: 3000K	DIM.:	SERIAL No.: 2408201131
MFR.: MERCURY LIGHTING	SUR.: 0.0016m2	Shielding Angle:

hcc	80%			70%			50%			30%			10%			0
hw	50%	30%	10%	50%	30%	10%	50%	30%	10%	50%	30%	10%	50%	30%	10%	0
hfc	20%			20%			20%			20%			20%			0
RCR	RCR:Room Cavity Ratio						Wall Exitance Coefficients(WEC)									
0.0																
1.0	.069	.039	.012	.065	.037	.012	.058	.034	.011	.052	.030	.010	.047	.027	.009	
2.0	.063	.035	.011	.060	.033	.010	.055	.030	.009	.050	.028	.009	.045	.026	.008	
3.0	.058	.031	.009	.056	.030	.009	.051	.028	.008	.047	.026	.008	.043	.024	.007	
4.0	.054	.028	.008	.052	.027	.008	.049	.026	.008	.045	.024	.007	.042	.023	.007	
5.0	.051	.026	.008	.049	.025	.007	.046	.024	.007	.043	.023	.007	.040	.021	.006	
6.0	.048	.024	.007	.046	.023	.007	.044	.022	.007	.041	.021	.006	.039	.020	.006	
7.0	.045	.022	.006	.044	.022	.006	.042	.021	.006	.039	.020	.006	.037	.019	.006	
8.0	.043	.021	.006	.042	.021	.006	.040	.020	.006	.038	.019	.006	.036	.018	.005	
9.0	.041	.020	.006	.040	.019	.005	.038	.019	.005	.036	.018	.005	.035	.018	.005	
10.0	.039	.019	.005	.038	.018	.005	.036	.018	.005	.035	.017	.005	.034	.017	.005	

hcc	80%			70%			50%			30%			10%			0
hw	50%	30%	10%	50%	30%	10%	50%	30%	10%	50%	30%	10%	50%	30%	10%	0
hfc	20%			20%			20%			20%			20%			0
RCR	RCR:Room Cavity Ratio						Ceiling Cavity Exitance Coefficients (CCEC)									
0.0	.102	.102	.102	.087	.087	.087	.059	.059	.059	.034	.034	.034	.011	.011	.011	
1.0	.090	.084	.080	.077	.072	.069	.053	.050	.047	.030	.029	.028	.010	.009	.009	
2.0	.080	.071	.064	.068	.061	.055	.047	.042	.038	.027	.025	.023	.009	.008	.007	
3.0	.071	.061	.052	.061	.052	.045	.042	.036	.032	.024	.021	.019	.008	.007	.006	
4.0	.064	.052	.043	.055	.045	.037	.038	.031	.026	.022	.018	.016	.007	.006	.005	
5.0	.059	.046	.036	.050	.039	.031	.035	.028	.022	.020	.016	.013	.006	.005	.004	
6.0	.054	.040	.031	.046	.035	.027	.032	.024	.019	.018	.014	.011	.006	.005	.004	
7.0	.049	.036	.026	.042	.031	.023	.029	.022	.016	.017	.013	.010	.006	.004	.003	
8.0	.046	.032	.023	.039	.028	.020	.027	.019	.014	.016	.011	.008	.005	.004	.003	
9.0	.043	.029	.020	.037	.025	.017	.025	.018	.012	.015	.010	.007	.005	.003	.002	
10.0	.040	.026	.017	.034	.023	.015	.024	.016	.011	.014	.009	.006	.005	.003	.002	

C Range: 0 - 360DEG

C Interval: For a lens beam angle of 15°

Test Speed: HIGH

Temperature:25.3℃

Operators:zoe

Test Date:2024-8-20

Range: 0 - 180DEG

Interval: 1.0DEG

Test System:EVERFINE GO-SPEX500\_V1 SYSTEM V2.00.461

Humidity:65.0%

Test Distance:3.160m [K=1.0000]

Remarks: LAMP:BXRH-30G10T0-G-83 Ra:90

LENS:PM-1084 15R

NO DRIVER:500mA

30minutes warm-up

**UGR(Unified Glare Rating) Table**

Test:U:17.646V I:0.5000A P:8.8230W PF:1.0000 Freq:49.99Hz Lamp Flux:1124.6x1 lm											
NAME: CTL-M-1.5-30K-15-SQ-AD						TYPE:		WEIGHT:			
SPEC.: 3000K						DIM.:		SERIAL No.: 2408201131			
MFR.: MERCURY LIGHTING						SUR.: 0.0016m2		Shielding Angle:			
ceiling/cavity	0.7	0.7	0.5	0.5	0.3	0.7	0.7	0.5	0.5	0.3	
walls	0.5	0.3	0.5	0.3	0.3	0.5	0.3	0.5	0.3	0.3	
working plane	0.2	0.2	0.2	0.2	0.2	0.2	0.2	0.2	0.2	0.2	
Room dimensions	Viewed crosswise					Viewed endwise					
x = 2H y = 2H	2H	7.1	7.7	7.3	7.8	7.9	6.8	7.4	7.0	7.5	7.7
	3H	7.5	8.1	7.8	8.3	8.4	7.3	7.9	7.5	8.0	8.2
	4H	7.6	8.1	7.8	8.3	8.5	7.3	7.8	7.6	8.0	8.3
	6H	7.5	8.0	7.8	8.2	8.5	7.3	7.8	7.5	8.0	8.2
	8H	7.5	7.9	7.7	8.2	8.4	7.2	7.7	7.5	8.0	8.2
	12H	7.4	7.9	7.7	8.1	8.4	7.2	7.7	7.5	7.9	8.2
4H	2H	7.1	7.6	7.3	7.8	8.0	6.8	7.4	7.1	7.6	7.8
	3H	7.7	8.2	8.0	8.4	8.7	7.5	8.0	7.8	8.2	8.5
	4H	7.7	8.2	8.1	8.5	8.8	7.5	8.0	7.9	8.2	8.5
	6H	7.7	8.0	8.0	8.4	8.7	7.5	7.9	7.8	8.2	8.5
	8H	7.6	8.0	8.0	8.3	8.7	7.4	7.8	7.8	8.1	8.5
	12H	7.6	7.9	8.0	8.3	8.6	7.4	7.7	7.8	8.1	8.5
8H	4H	7.7	8.0	8.1	8.4	8.7	7.5	7.8	7.9	8.2	8.5
	6H	7.6	7.9	8.0	8.3	8.7	7.4	7.7	7.8	8.1	8.5
	8H	7.5	7.8	8.0	8.2	8.7	7.4	7.6	7.8	8.0	8.5
	12H	7.5	7.7	8.0	8.2	8.6	7.3	7.6	7.8	8.0	8.5
12H	4H	7.6	7.9	8.0	8.3	8.7	7.4	7.7	7.8	8.1	8.5
	6H	7.5	7.8	8.0	8.2	8.7	7.4	7.6	7.8	8.0	8.5
	8H	7.5	7.7	8.0	8.2	8.6	7.3	7.5	7.8	8.0	8.4
Variations with the observer position at spacings(CIE Pub.117):											
S = 1.0H	+ 1.8 / - 2.8					+ 1.8 / - 2.7					
1.5H	+ 2.8 / - 2.4					+ 2.8 / - 2.5					
2.0H	+ 4.0 / - 2.1					+ 4.1 / - 2.1					

CIE Pub.117, 1125 lm Total Lamp Luminous Flux Correct (8log(F/F0) = 0.4)  
 Area: 0.0016 m2

C Range: 0 - 360DEG

C Interval: For a lens beam angle of 15°

Test Speed: HIGH

Temperature:25.3℃

Operators:zoe

Test Date:2024-8-20

Range: 0 - 180DEG

Interval: 1.0DEG

Test System:EVERFINE GO-SPEX500\_V1 SYSTEM V2.00.461

Humidity:65.0%

Test Distance:3.160m [K=1.0000]

Remarks: LAMP:BXRH-30G10T0-G-83 Ra:90

LENS:PM-1084 15R

NO DRIVER:500mA

30minutes warm-up



## UTILIZATION FACTORS TABLE

Test:U:17.646V I:0.5000A P:8.8230W PF:1.0000 Freq:49.99Hz Lamp Flux:1124.6x1 lm		
NAME: CTL-M-1.5-30K-15-SQ-AD	TYPE:	WEIGHT:
SPEC.: 3000K	DIM.:	SERIAL No.: 2408201131
MFR.: MERCURY LIGHTING	SUR.: 0.0016m2	Shielding Angle:

REFLECTANCE										
Ceiling	0.8	0.8	0.8	0.7	0.7	0.7	0.5	0.5	0.5	0
Walls	0.7	0.5	0.3	0.7	0.5	0.3	0.7	0.5	0.3	0
Working plane	0.2	0.2	0.2	0.2	0.2	0.2	0.2	0.2	0.2	0
ROOM INDEX	UTILIZATION FACTORS (PERCENT) $k(RI) \times RCR = 5$									
$k = 0.60$	48	45	43	48	45	43	48	45	43	42
0.80	52	49	48	52	49	47	51	49	47	45
1.00	54	52	50	54	51	50	53	51	49	47
1.25	56	54	52	56	53	52	55	53	51	49
1.50	57	55	54	57	55	53	56	54	53	50
2.00	59	57	55	58	56	55	57	55	54	51
2.50	59	58	56	59	57	56	57	56	55	52
3.00	60	59	57	59	58	57	58	56	55	52
4.00	61	60	59	60	59	58	58	57	57	53
5.00	62	61	60	61	60	59	59	58	57	53
ROOM INDEX	UF(total)									Direct
According to DIN EN 13032-2 2004			Suspended					SHRNOM = 1.25		

C Range: 0 - 360DEG

C Interval: For a lens beam angle of 15°

Test Speed: HIGH

Temperature: 25.3 °C

Operators: zoe

Test Date: 2024-8-20

Range: 0 - 180DEG

Interval: 1.0DEG

Test System: EVERFINE GO-SPEX500\_V1 SYSTEM V2.00.461

Humidity: 65.0%

Test Distance: 3.160m [K=1.0000]

Remarks: LAMP: BXRH-30G10T0-G-83 Ra: 90

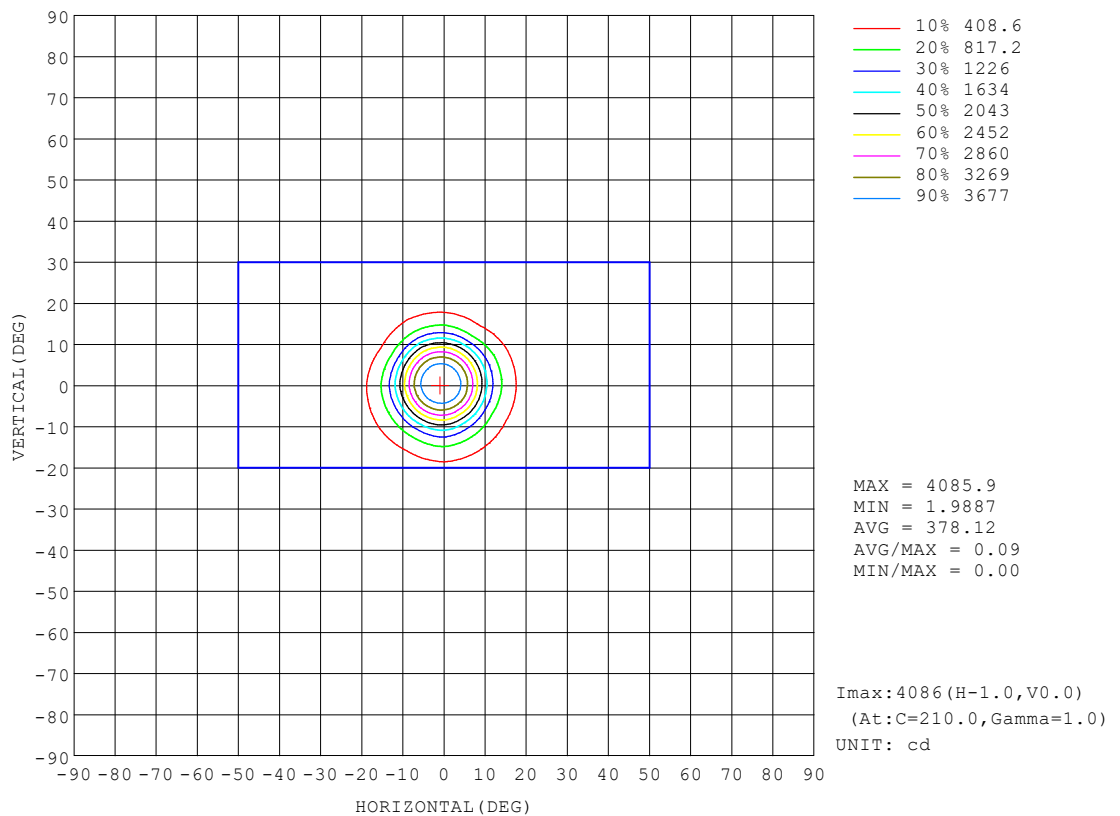
LENS: PM-1084 15R

NO DRIVER: 500mA

30minutes warm-up

## ISOCANDELA DIAGRAM

Test:U:17.646V I:0.5000A P:8.8230W PF:1.0000 Freq:49.99Hz Lamp Flux:1124.6x1 lm		
NAME: CTL-M-1.5-30K-15-SQ-AD	TYPE:	WEIGHT:
SPEC.: 3000K	DIM.:	SERIAL No.: 2408201131
MFR.: MERCURY LIGHTING	SUR.: 0.0016m2	Shielding Angle:



C Range: 0 - 360DEG

C Interval: For a lens beam angle of 15°

Test Speed: HIGH

Temperature: 25.3 °C

Operators: zoe

Test Date: 2024-8-20

Range: 0 - 180DEG

Interval: 1.0DEG

Test System: EVERFINE GO-SPEX500\_V1 SYSTEM V2.00.461

Humidity: 65.0%

Test Distance: 3.160m [K=1.0000]

Remarks: LAMP: BXRH-30G10T0-G-83 Ra: 90

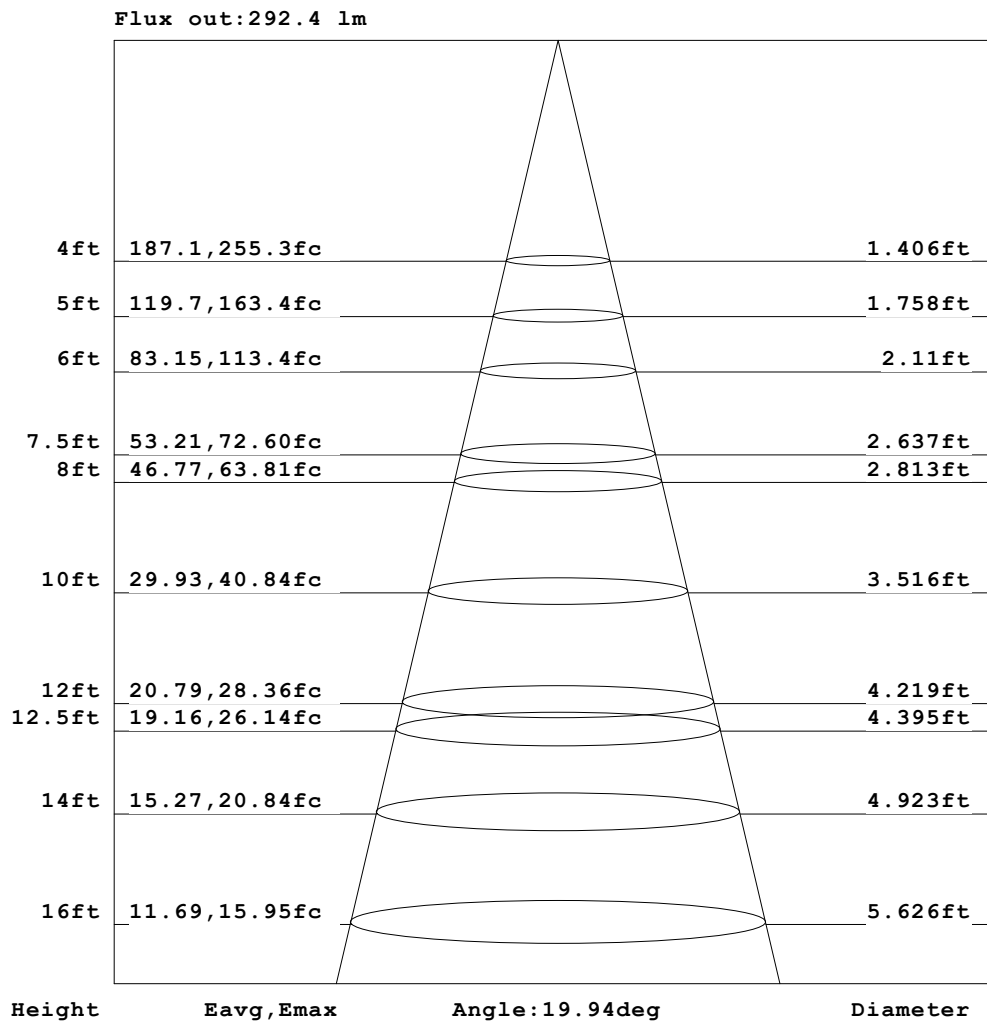
LENS: PM-1084 15R

NO DRIVER: 500mA

30minutes warm-up

**AAI Figure**

Test:U:17.646V I:0.5000A P:8.8230W PF:1.0000 Freq:49.99Hz Lamp Flux:1124.6x1 lm		
NAME: CTL-M-1.5-30K-15-SQ-AD	TYPE:	WEIGHT:
SPEC.: 3000K	DIM.:	SERIAL No.: 2408201131
MFR.: MERCURY LIGHTING	SUR.: 0.0016m2	Shielding Angle:



Note: The Curves indicate the illuminated area and the average illumination when the luminaire is at different distance.

C Range: 0 - 360DEG

C Interval: For a lens beam angle of 15°

Test Speed: HIGH

Temperature: 25.3 °C

Operators: zoe

Test Date: 2024-8-20

Range: 0 - 180DEG

Interval: 1.0DEG

Test System: EVERFINE GO-SPEX500\_V1 SYSTEM V2.00.461

Humidity: 65.0%

Test Distance: 3.160m [K=1.0000]

Remarks: LAMP: BXRH-30G10T0-G-83 Ra: 90

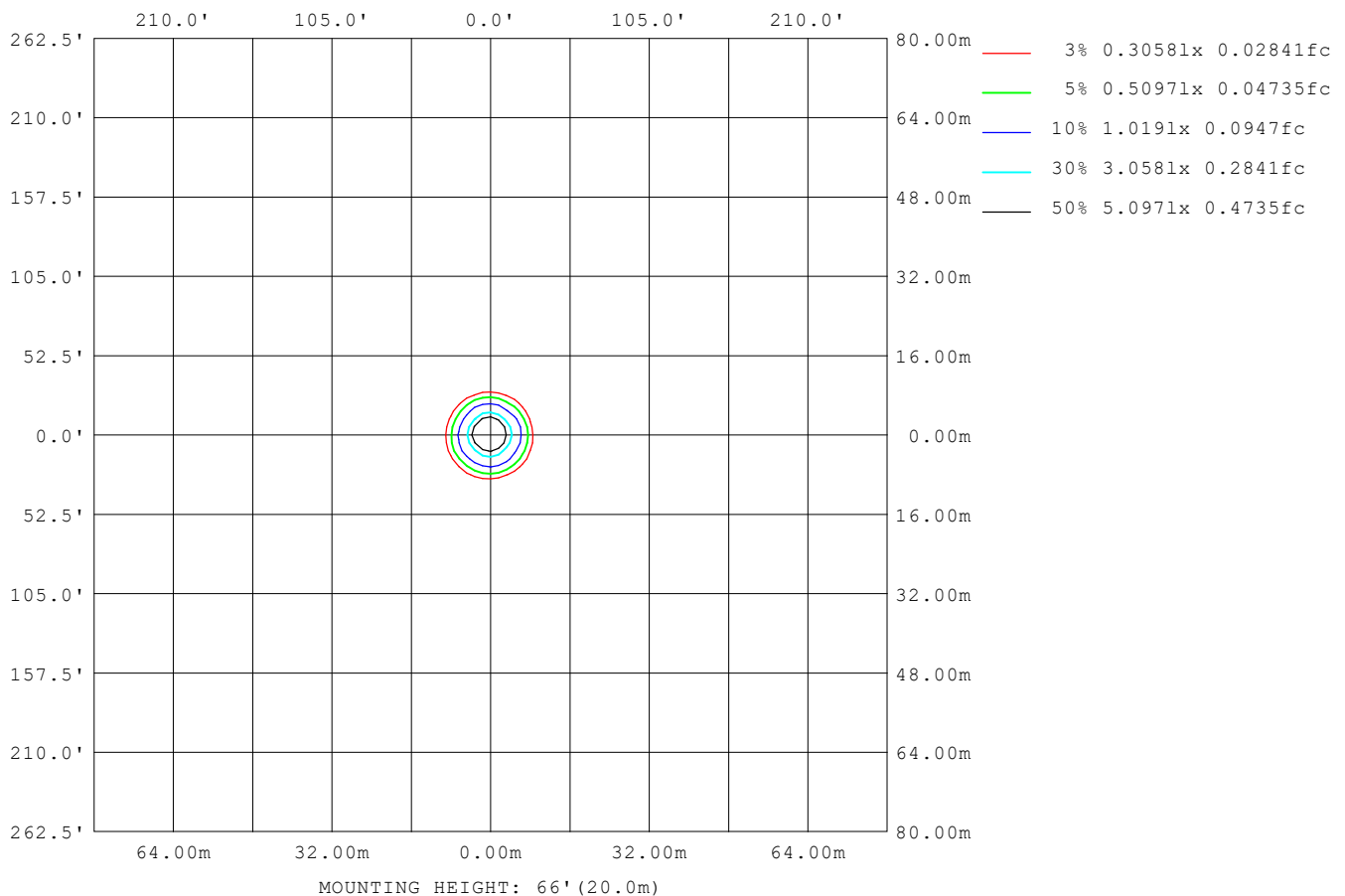
LENS: PM-1084 15R

NO DRIVER: 500mA

30minutes warm-up

**ISOLUX DIAGRAM**

<b>Test:</b> U:17.646V I:0.5000A P:8.8230W PF:1.0000 Freq:49.99Hz <b>Lamp Flux:</b> 1124.6x1 lm		
<b>NAME:</b> CTL-M-1.5-30K-15-SQ-AD	<b>TYPE:</b>	<b>WEIGHT:</b>
<b>SPEC.:</b> 3000K	<b>DIM.:</b>	<b>SERIAL No.:</b> 2408201131
<b>MFR.:</b> MERCURY LIGHTING	<b>SUR.:</b> 0.0016m <sup>2</sup>	<b>Shielding Angle:</b>


**C Range:** 0 - 360DEG

**C Interval:** For a lens beam angle of 15°

**Test Speed:** HIGH

**Temperature:** 25.3 °C

**Operators:** zoe

**Test Date:** 2024-8-20

**Range:** 0 - 180DEG

**Interval:** 1.0DEG

**Test System:** EVERFINE GO-SPEX500\_V1 SYSTEM V2.00.461

**Humidity:** 65.0%

**Test Distance:** 3.160m [K=1.0000]

**Remarks:** LAMP: BXRH-30G10T0-G-83 Ra:90

**LENS:** PM-1084 15R

**NO DRIVER:** 500mA

**30minutes warm-up**

**LED Avg.L Report**

Test:U:17.646V I:0.5000A P:8.8230W PF:1.0000 Freq:49.99Hz Lamp Flux:1124.6x1 lm		
NAME: CTL-M-1.5-30K-15-SQ-AD	TYPE:	WEIGHT:
SPEC.: 3000K	DIM.:	SERIAL No.: 2408201131
MFR.: MERCURY LIGHTING	SUR.: 0.0016m2	Shielding Angle:

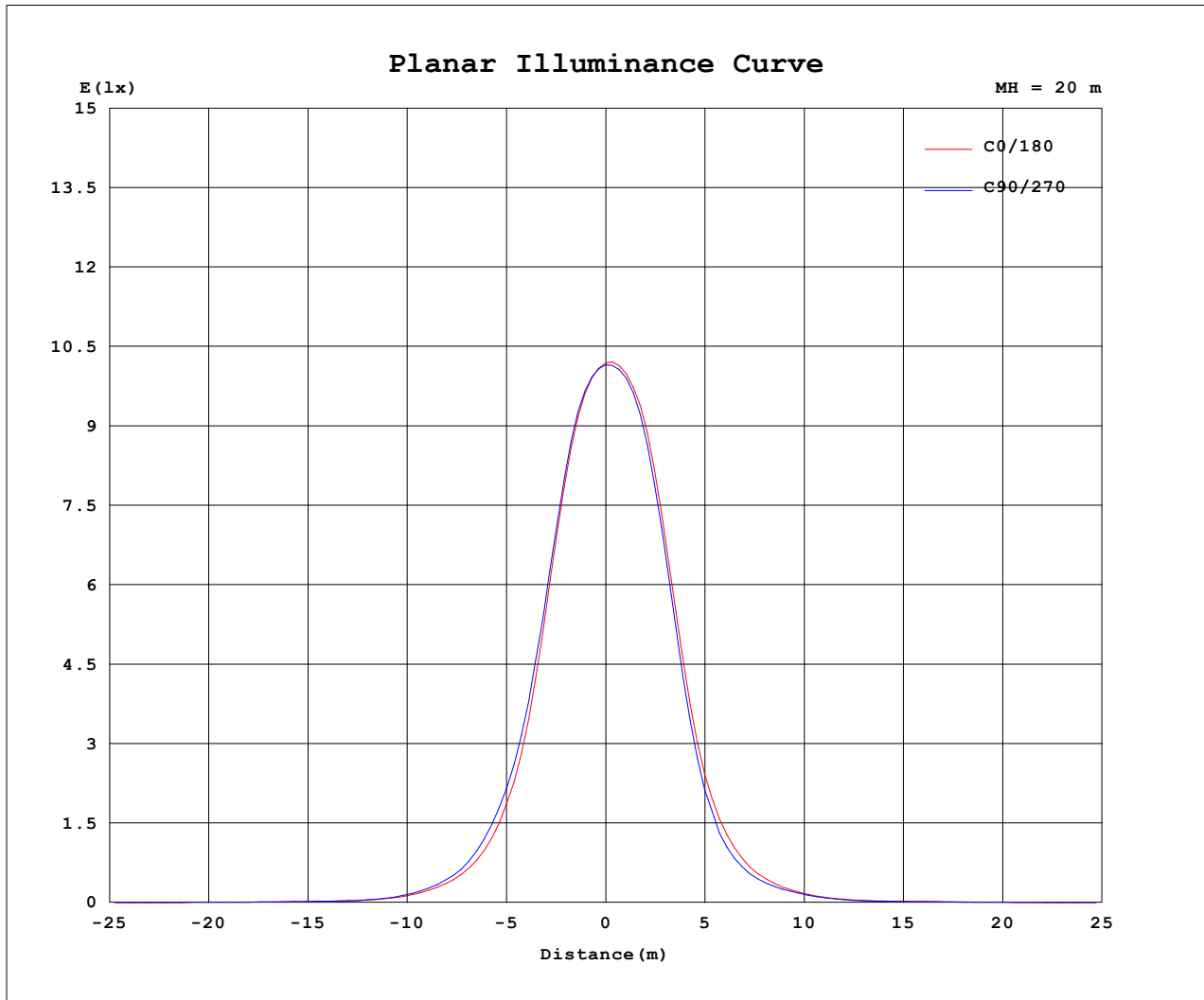
AvgL	cd/m2
L_0~180 (65) av	2329
L_0~180 (75) av	641
L_0~180 (85) av	416
L_90~270 (65) av	2293
L_90~270 (75) av	766
L_90~270 (85) av	537
L_45 (65) av	2180
L_45 (75) av	1916
L_45 (85) av	408

Standard: GB/T 29293-2012

C Range: 0 - 360DEG  
 C Interval: For a lens beam angle of 15°  
 Test Speed: HIGH  
 Temperature: 25.3℃  
 Operators: zoe  
 Test Date: 2024-8-20

Range: 0 - 180DEG  
 Interval: 1.0DEG  
 Test System: EVERFINE GO-SPEX500\_V1 SYSTEM V2.00.461  
 Humidity: 65.0%  
 Test Distance: 3.160m [K=1.0000]  
 Remarks: LAMP: BXRH-30G10T0-G-83 Ra: 90  
 LENS: PM-1084 15R  
 NO DRIVER: 500mA  
 30minutes warm-up

### Planar Illuminance Curve



C Range: 0 - 360DEG  
C Interval: For a lens beam angle of 15°  
Test Speed: HIGH  
Temperature: 25.3 °C  
Operators: zoe  
Test Date: 2024-8-20

Range: 0 - 180DEG  
Interval: 1.0DEG  
Test System: EVERFINE GO-SPEX500\_V1 SYSTEM V2.00.461  
Humidity: 65.0%  
Test Distance: 3.160m [K=1.0000]  
Remarks: LAMP: BXRH-30G10T0-G-83 Ra: 90  
LENS: PM-1084 15R  
NO DRIVER: 500mA  
30minutes warm-up

## LUMINOUS DISTRIBUTION INTENSITY DATA

Test:U:17.646V I:0.5000A P:8.8230W PF:1.0000 Freq:49.99Hz Lamp Flux:1124.6x1 lm		
NAME: CTL-M-1.5-30K-15-SQ-AD	TYPE:	WEIGHT:
SPEC.: 3000K	DIM.:	SERIAL No.: 2408201131
MFR.: MERCURY LIGHTING	SUR.: 0.0016m2	Shielding Angle:

Table--1

UNIT: cd

C (DEG) (DEG)	0	30	60	90	120	150	180	210	240	270	300	330						
0	4067	4067	4067	4067	4067	4067	4067	4067	4067	4067	4067	4067						
5	3463	3458	3462	3526	3625	3718	3786	3793	3789	3730	3638	3537						
10	1769	1693	1723	1916	1972	2114	2296	2304	2310	2182	2002	1860						
15	666	616	690	800	766	803	867	771	798	763	607	673						
20	257	268	280	305	305	328	321	284	293	262	250	260						
25	101	119	119	119	141	144	130	134	124	114	119	108						
30	36.9	50.9	47.3	40.8	59.6	57.8	49.0	56.9	51.1	43.6	52.1	42.1						
35	20.3	22.3	19.2	20.0	25.5	23.5	22.0	26.7	21.8	20.2	24.1	19.0						
40	13.5	12.6	12.4	13.4	13.7	14.4	15.3	13.9	13.3	13.3	12.6	12.5						
45	8.03	7.75	7.41	7.96	8.51	8.87	9.27	8.46	7.58	7.51	7.49	7.46						
50	3.89	4.54	3.93	3.81	5.03	5.08	4.85	4.86	4.01	3.78	4.13	4.14						
55	2.27	2.36	2.20	2.26	2.71	2.53	2.49	2.57	1.98	1.90	2.18	2.10						
60	1.83	1.67	1.73	1.84	1.87	1.92	1.92	1.64	1.52	1.60	1.50	1.67						
65	1.56	1.44	1.49	1.59	1.53	1.63	1.59	1.40	1.46	1.51	1.40	1.52						
70	1.40	1.16	1.23	1.32	1.17	1.34	1.37	1.25	1.52	1.77	1.35	1.43						
75	0.24	0.60	0.30	0.31	0.64	0.60	0.29	0.96	1.32	0.32	1.09	0.39						
80	0.13	0.14	0.16	0.17	0.16	0.16	0.14	0.13	0.12	0.12	0.11	0.11						
85	0.05	0.06	0.07	0.09	0.08	0.07	0.06	0.05	0.06	0.06	0.05	0.05						
90	0.00	0.00	0.00	0.00	0.00	0.00	0.00	0.00	0.00	0.00	0.00	0.00						
95	0.00	0.00	0.00	0.00	0.00	0.00	0.00	0.00	0.00	0.00	0.00	0.00						
100	0.00	0.00	0.00	0.00	0.00	0.00	0.00	0.00	0.00	0.00	0.00	0.00						
105	0.00	0.00	0.00	0.00	0.00	0.00	0.00	0.00	0.00	0.00	0.00	0.00						
110	0.00	0.00	0.00	0.00	0.00	0.00	0.00	0.00	0.00	0.00	0.00	0.00						
115	0.00	0.00	0.00	0.00	0.00	0.00	0.00	0.00	0.00	0.00	0.00	0.00						
120	0.00	0.00	0.00	0.00	0.00	0.00	0.00	0.00	0.00	0.00	0.00	0.00						
125	0.00	0.00	0.00	0.00	0.00	0.00	0.00	0.00	0.00	0.00	0.00	0.00						
130	0.00	0.00	0.00	0.00	0.00	0.00	0.00	0.00	0.00	0.00	0.00	0.00						
135	0.00	0.00	0.00	0.00	0.00	0.00	0.00	0.00	0.00	0.00	0.00	0.00						
140	0.00	0.00	0.00	0.00	0.00	0.00	0.00	0.00	0.00	0.00	0.00	0.00						
145	0.00	0.00	0.00	0.00	0.00	0.00	0.00	0.00	0.00	0.00	0.00	0.00						
150	0.00	0.00	0.00	0.00	0.00	0.00	0.00	0.00	0.00	0.00	0.00	0.00						
155	0.00	0.00	0.00	0.00	0.00	0.00	0.00	0.00	0.00	0.00	0.00	0.00						
160	0.00	0.00	0.00	0.00	0.00	0.00	0.00	0.00	0.00	0.00	0.00	0.00						
165	0.00	0.00	0.00	0.00	0.00	0.00	0.00	0.00	0.00	0.00	0.00	0.00						
170	0.00	0.00	0.00	0.00	0.00	0.00	0.00	0.00	0.00	0.00	0.00	0.00						
175	0.00	0.00	0.00	0.00	0.00	0.00	0.00	0.00	0.00	0.00	0.00	0.00						
180	0.00	0.00	0.00	0.00	0.00	0.00	0.00	0.00	0.00	0.00	0.00	0.00						

C Range: 0 - 360DEG

C Interval: For a lens beam angle of 15°

Test Speed: HIGH

Temperature:25.3℃

Operators:zoe

Test Date:2024-8-20

Range: 0 - 180DEG

Interval: 1.0DEG

Test System:EVERFINE GO-SPEX500\_V1 SYSTEM V2.00.461

Humidity:65.0%

Test Distance:3.160m [K=1.0000]

Remarks: LAMP:BXRH-30G10T0-G-83 Ra:90

LENS:PM-1084 15R

NO DRIVER:500mA

30minutes warm-up