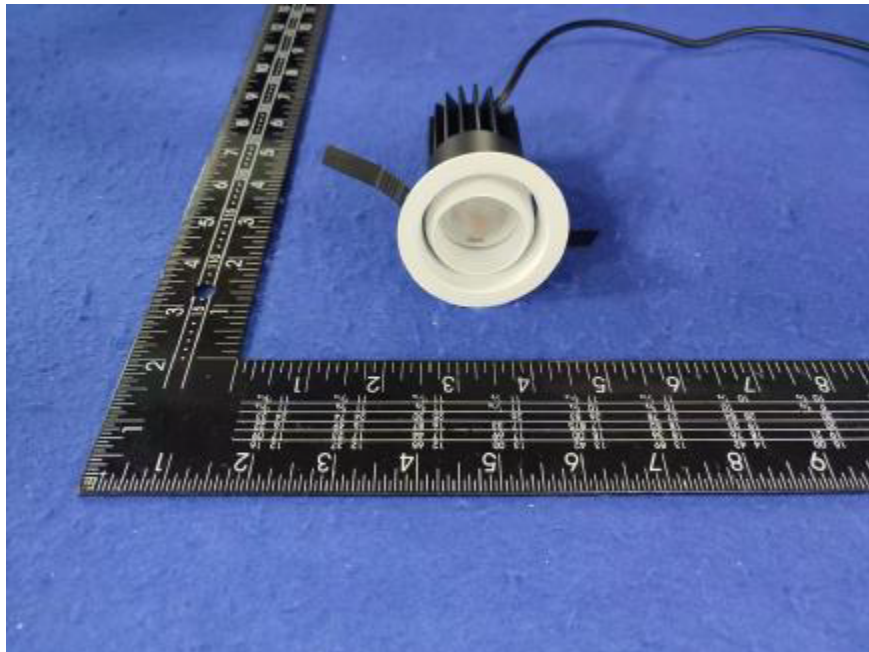


Photometric report for Flanged and Flangeless Trim



Light Output Ratio:	81.5%	
Luminaire Power:	8.826 W	
SHR Nominal:	0.75	Calculated using the TM5
SHR Maximum:	0.85	fine grid method.

C Range: 0 - 360DEG	γ Range: 0 - 180DEG
C Interval: For a lens beam angle of 60°	γ Interval: 1.0DEG
Test Speed: HIGH	Test System: EVERFINE GO-SPEX500_V1 SYSTEM V2.00.461
Temperature: 77.54°F	Humidity: 65.0%
Operators: zoe	Test Distance: 124.409" [K=1.0000]
Test Date: 2024-8-20	Remarks: LAMP: BXRH-30G10T0-G-83 Ra: 90
	LENS: PM-1084C 50R
	NO DRIVER: 500mA
	30minutes warm-up

LUMINOUS INTENSITY DISTRIBUTION DIAGRAM

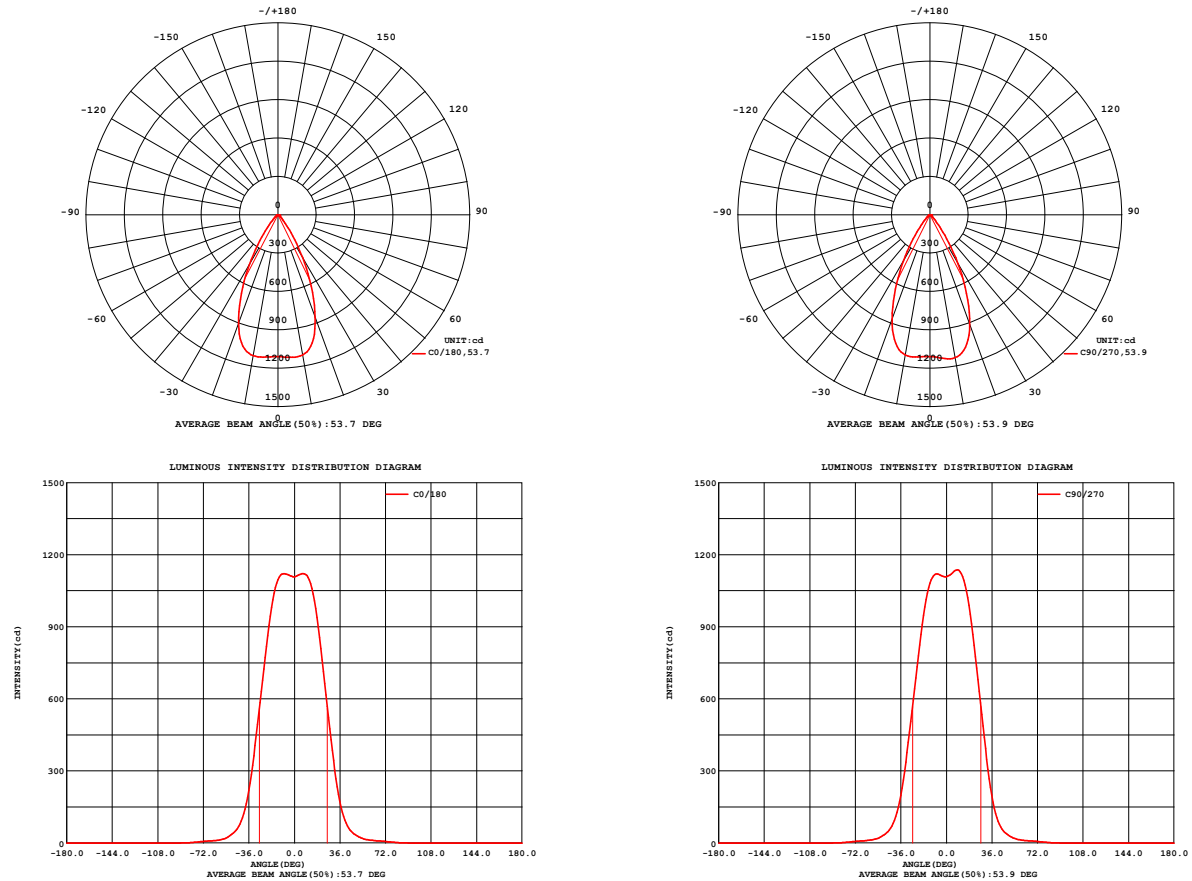


Fig. C0/C180

Fig. C90/C270

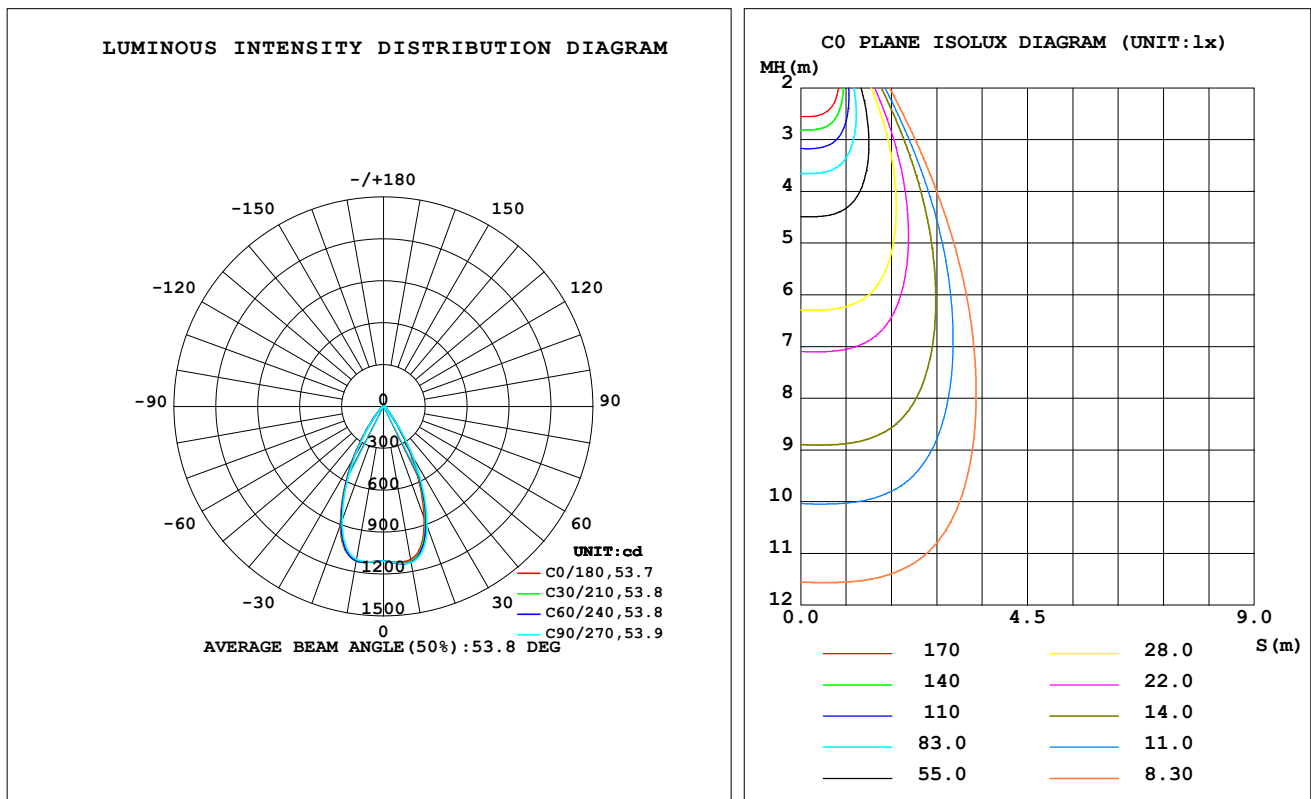
C Range: 0 - 360DEG
 C Interval: For a lens beam angle of 60°
 Test Speed: HIGH
 Temperature: 77.54°F
 Operators: zoe
 Test Date: 2024-8-20

γ Range: 0 - 180DEG
 γ Interval: 1.0DEG
 Test System: EVERFINE GO-SPEX500_V1 SYSTEM V2.00.461
 Humidity: 65.0%
 Test Distance: 124.409" [K=1.0000]
 Remarks: LAMP: BXRH-30G10T0-G-83 Ra: 90
 LENS: PM-1084C 50R
 NO DRIVER: 500mA
 30minutes warm-up

LUMINAIRE PHOTOMETRIC TEST REPORT

Test:U:17.653V I:0.5000A P:8.8265W PF:1.0000 Freq:49.99Hz Lamp Flux:1124.6x1 lm		
NAME: CTL-MM-1.5-30K-60-RD-AD-OPS-SG	TYPE:	WEIGHT:
SPEC.: 3000K	DIM.:	SERIAL No.: 2408201143
MFR.: MERCURY LIGHTING	SUR.: 0.001589625m ²	Shielding Angle:

DATA OF LAMP		PHOTOMETRIC DATA Eff: 103.79 lm/W			
MODEL	Brideglux	I _{max} (cd)	1137	S/MH (C0/180)	0.83
NOMINAL POWER (W)	9	LOR (%)	81.5	S/MH (C90/270)	0.81
RATED VOLTAGE (V)	18	TOTAL FLUX (lm)	916.14	☒ UP, DN (C0-180)	0.0, 40.7
NOMINAL FLUX (lm)	1124.6	CIE CLASS	DIRECT	☒ UP, DN (C180-360)	0.0, 40.8
LAMPS INSIDE	1	☒ up (%)	0.0	CIBSE SHR NOM	0.75
TEST VOLTAGE (V)	18	☒ down (%)	81.5	CIBSE SHR MAX	0.85



C Range: 0 - 360DEG

C Interval: For a lens beam angle of 60°

Test Speed: HIGH

Temperature: 77.54°F

Operators: zoe

Test Date: 2024-8-20

γ Range: 0 - 180DEG

γ Interval: 1.0DEG

Test System: EVERFINE GO-SPEX500_V1 SYSTEM V2.00.461

Humidity: 65.0%

Test Distance: 124.409" [K=1.0000]

Remarks: LAMP: BXRH-30G10T0-G-83 Ra: 90

LENS: PM-1084C 50R

NO DRIVER: 500mA

30minutes warm-up

ZONAL FLUX DIAGRAM

ZONAL FLUX DIAGRAM:

°	C0	C45	C90	C135	C180	C225	C270	C315	°	zone	total	%lum,lamp
10	1113	1129	1134	1121	1118	1122	1112	1104	0- 10	107.0	107.0	11.7,9.51
20	854.2	884.3	911.6	899.7	904.6	890.6	867.6	851.2	10- 20	289.2	396.2	43.2,35.2
30	385.9	413.9	439.4	441.4	449.2	435.6	418.8	402.5	20- 30	296.0	692.2	75.6,61.5
40	95.28	100.2	105.7	112.1	121.4	117.4	109.4	102.3	30- 40	147.3	839.5	91.6,74.6
50	28.14	29.05	29.25	30.63	33.41	33.03	30.79	29.36	40- 50	44.73	884.2	96.5,78.6
60	11.99	11.81	11.83	11.93	11.83	12.07	12.13	12.16	50- 60	16.81	901.0	98.3,80.1
70	7.218	7.121	7.176	7.227	7.248	7.231	7.294	7.340	60- 70	9.250	910.3	99.4,80.9
80	2.290	2.282	2.373	2.488	2.574	2.528	2.445	2.369	70- 80	5.100	915.4	99.9,81.4
90	0	0	0	0	0	0	0	0	80- 90	0.7674	916.1	100,81.5
100	0	0	0	0	0	0	0	0	90-100	0	916.1	100,81.5
110	0	0	0	0	0	0	0	0	100-110	0	916.1	100,81.5
120	0	0	0	0	0	0	0	0	110-120	0	916.1	100,81.5
130	0	0	0	0	0	0	0	0	120-130	0	916.1	100,81.5
140	0	0	0	0	0	0	0	0	130-140	0	916.1	100,81.5
150	0	0	0	0	0	0	0	0	140-150	0	916.1	100,81.5
160	0	0	0	0	0	0	0	0	150-160	0	916.1	100,81.5
170	0	0	0	0	0	0	0	0	160-170	0	916.1	100,81.5
180	0	0	0	0	0	0	0	0	170-180	0	916.1	100,81.5
DEG	LUMINOUS INTENSITY:cd									UNIT:lm		

C Range: 0 - 360DEG

C Interval:For a lens beam angle of 60°

Test Speed: HIGH

Temperature:77.54°F

Operators:zoe

Test Date:2024-8-20

γ Range: 0 - 180DEG

γ Interval: 1.0DEG

Test System:EVERFINE GO-SPEX500_V1 SYSTEM V2.00.461

Humidity:65.0%

Test Distance:124.409" [K=1.0000]

Remarks: LAMP:BXRH-30G10T0-G-83 Ra:90

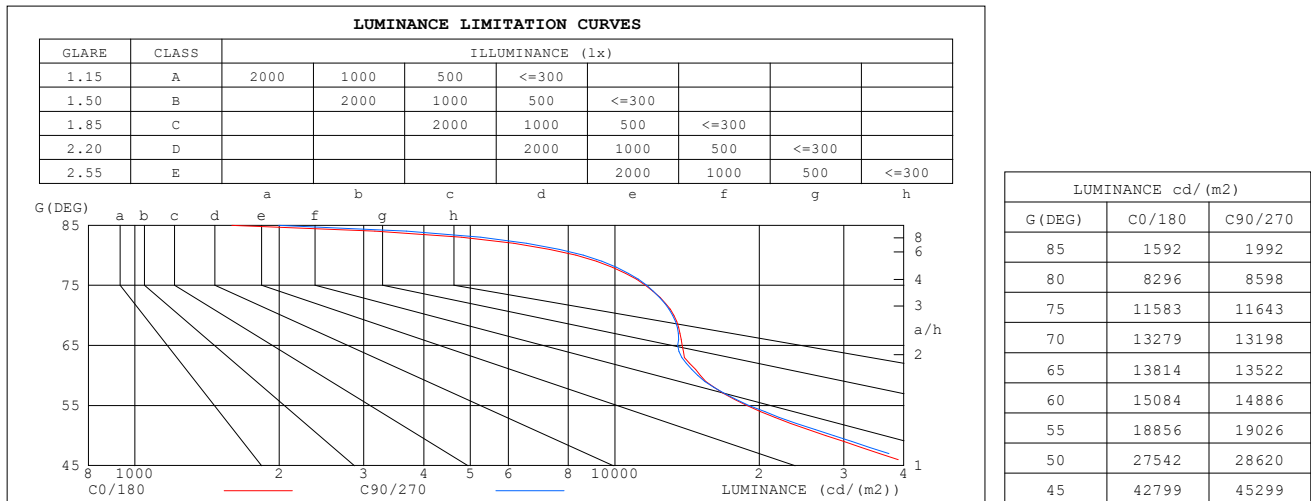
LENS:PM-1084C 50R

NO DRIVER:500mA

30minutes warm-up

LUMINANCE LIMITATION CURVES

Test:U:17.653V I:0.5000A P:8.8265W PF:1.0000 Freq:49.99Hz Lamp Flux:1124.6x1 lm		
NAME: CTL-MM-1.5-30K-60-RD-AD-OPS-SG	TYPE:	WEIGHT:
SPEC.: 3000K	DIM.:	SERIAL No.: 2408201143
MFR.: MERCURY LIGHTING	SUR.: 0.001589625m2	Shielding Angle:



C Range: 0 - 360DEG

C Interval: For a lens beam angle of 60°

Test Speed: HIGH

Temperature: 77.54°F

Operators: zoe

Test Date: 2024-8-20

γ Range: 0 - 180DEG

γ Interval: 1.0DEG

Test System: EVERFINE GO-SPEX500_V1 SYSTEM V2.00.461

Humidity: 65.0%

Test Distance: 124.409" [K=1.0000]

Remarks: LAMP: BXRH-30G10T0-G-83 Ra: 90

LENS: PM-1084C 50R

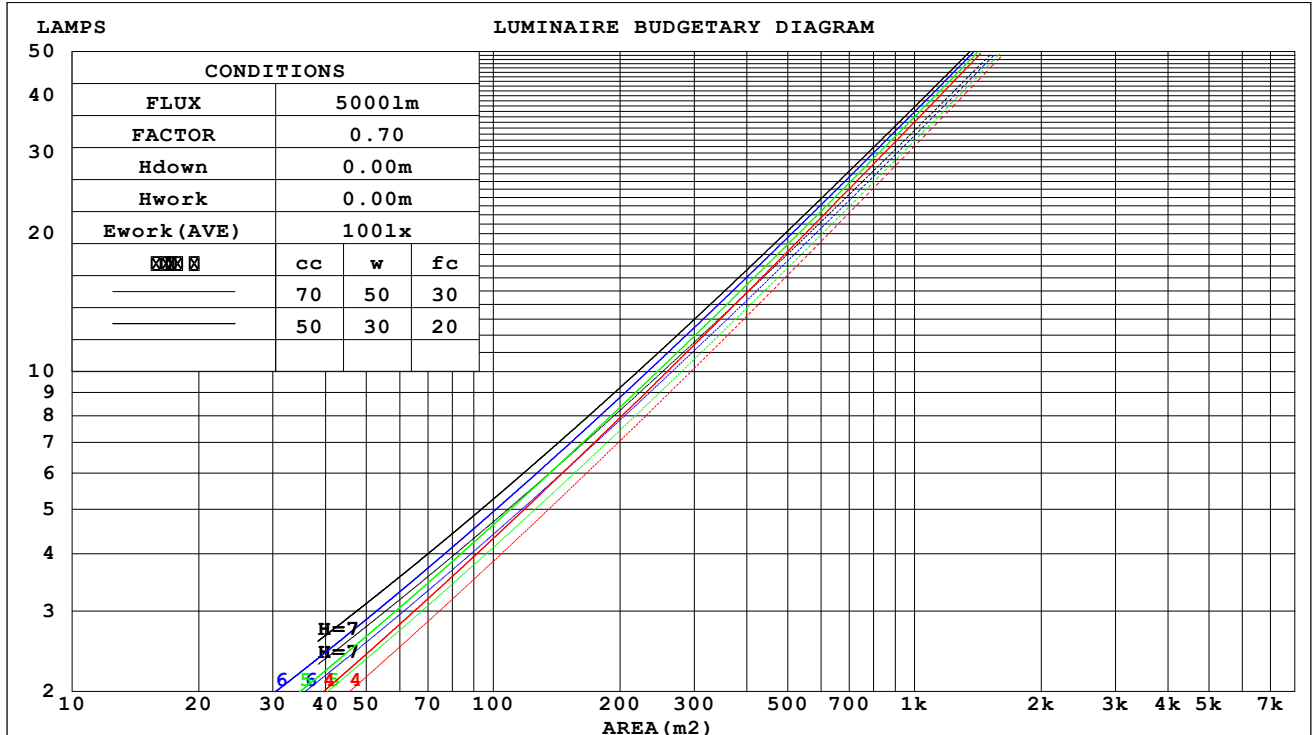
NO DRIVER: 500mA

30minutes warm-up

CU AND LUMINAIRE BUDGETARY ESTIMATE DIAGRAM

Test:U:17.653V I:0.5000A P:8.8265W PF:1.0000 Freq:49.99Hz Lamp Flux:1124.6x1 lm		
NAME: CTL-MM-1.5-30K-60-RD-AD-OPS-SG	TYPE:	WEIGHT:
SPEC.: 3000K	DIM.:	SERIAL No.: 2408201143
MFR.: MERCURY LIGHTING	SUR.: 0.001589625m2	Shielding Angle:

cc	80%			70%			50%			30%			10%			0
w	50%	30%	10%	50%	30%	10%	50%	30%	10%	50%	30%	10%	50%	30%	10%	0
fc	20%			20%			20%			20%			20%			0
RCR	RCR:Room Cavity Ratio															



C Range: 0 - 360DEG

C Interval: For a lens beam angle of 60°

Test Speed: HIGH

Temperature: 77.54°F

Operators: zoe

Test Date: 2024-8-20

γ Range: 0 - 180DEG

γ Interval: 1.0DEG

Test System: EVERFINE GO-SPEX500_V1 SYSTEM V2.00.461

Humidity: 65.0%

Test Distance: 124.409" [K=1.0000]

Remarks: LAMP: BXRH-30G10T0-G-83 Ra: 90

LENS: PM-1084C 50R

NO DRIVER: 500mA

30minutes warm-up

WEC AND CCEC

Test:U:17.653V I:0.5000A P:8.8265W PF:1.0000 Freq:49.99Hz Lamp Flux:1124.6x1 lm		
NAME: CTL-MM-1.5-30K-60-RD-AD-OPS-SG	TYPE:	WEIGHT:
SPEC.: 3000K	DIM.:	SERIAL No.: 2408201143
MFR.: MERCURY LIGHTING	SUR.: 0.001589625m2	Shielding Angle:

cc	80%			70%			50%			30%			10%			0
w	50%	30%	10%	50%	30%	10%	50%	30%	10%	50%	30%	10%	50%	30%	10%	0
fc	20%			20%			20%			20%			20%			0
RCR	RCR:Room Cavity Ratio						Wall Exitance Coefficients(WEC)									
0.0																
1.0	.145	.083	.026	.140	.080	.025	.130	.074	.024	.120	.069	.022	.112	.065	.021	
2.0	.139	.076	.023	.134	.074	.023	.125	.070	.022	.118	.066	.021	.110	.062	.020	
3.0	.132	.070	.021	.128	.068	.021	.120	.065	.020	.114	.062	.019	.107	.059	.018	
4.0	.125	.065	.019	.122	.064	.019	.115	.061	.018	.109	.059	.018	.104	.056	.017	
5.0	.119	.060	.018	.116	.059	.017	.110	.057	.017	.105	.055	.016	.100	.054	.016	
6.0	.113	.057	.016	.110	.056	.016	.106	.054	.016	.101	.053	.015	.097	.051	.015	
7.0	.108	.053	.015	.106	.053	.015	.101	.051	.015	.097	.050	.015	.093	.049	.014	
8.0	.103	.050	.014	.101	.050	.014	.097	.049	.014	.094	.047	.014	.090	.046	.013	
9.0	.099	.048	.013	.097	.047	.013	.093	.046	.013	.090	.045	.013	.087	.044	.013	
10.0	.095	.045	.013	.093	.045	.013	.090	.044	.012	.087	.043	.012	.084	.042	.012	

cc	80%			70%			50%			30%			10%			0
w	50%	30%	10%	50%	30%	10%	50%	30%	10%	50%	30%	10%	50%	30%	10%	0
fc	20%			20%			20%			20%			20%			0
RCR	RCR:Room Cavity Ratio						Ceiling Cavity Exitance Coefficients(CCEC)									
0.0	.155	.155	.155	.133	.133	.133	.091	.091	.091	.052	.052	.052	.017	.017	.017	
1.0	.139	.128	.118	.119	.110	.101	.082	.076	.070	.047	.044	.041	.015	.014	.013	
2.0	.127	.108	.092	.109	.093	.079	.075	.064	.055	.043	.037	.032	.014	.012	.011	
3.0	.117	.093	.073	.100	.080	.063	.069	.055	.044	.040	.032	.026	.013	.011	.009	
4.0	.109	.081	.059	.093	.070	.051	.064	.048	.036	.037	.028	.021	.012	.009	.007	
5.0	.101	.071	.049	.087	.061	.042	.060	.043	.030	.035	.025	.018	.011	.008	.006	
6.0	.095	.063	.041	.082	.055	.035	.056	.038	.025	.033	.023	.015	.011	.007	.005	
7.0	.090	.057	.034	.077	.050	.030	.053	.035	.021	.031	.021	.013	.010	.007	.004	
8.0	.085	.052	.030	.073	.045	.026	.051	.032	.018	.030	.019	.011	.010	.006	.004	
9.0	.081	.048	.026	.070	.042	.022	.048	.029	.016	.028	.017	.009	.009	.006	.003	
10.0	.077	.044	.022	.067	.039	.020	.046	.027	.014	.027	.016	.008	.009	.005	.003	

C Range: 0 - 360DEG

C Interval:For a lens beam angle of 60°

Test Speed: HIGH

Temperature:77.54°F

Operators:zoe

Test Date:2024-8-20

γ Range: 0 - 180DEG

γ Interval: 1.0DEG

Test System:EVERFINE GO-SPEX500_V1 SYSTEM V2.00.461

Humidity:65.0%

Test Distance:124.409" [K=1.0000]

Remarks: LAMP:BXRH-30G10T0-G-83 Ra:90

LENS:PM-1084C 50R

NO DRIVER:500mA

30minutes warm-up

UGR(Unified Glare Rating) Table

Test:U:17.653V I:0.5000A P:8.8265W PF:1.0000 Freq:49.99Hz Lamp Flux:1124.6x1 lm											
NAME: CTL-MM-1.5-30K-60-RD-AD-OPS-SG					TYPE:			WEIGHT:			
SPEC.: 3000K					DIM.:			SERIAL No.: 2408201143			
MFR.: MERCURY LIGHTING					SUR.: 0.001589625m2			Shielding Angle:			
ceiling/cavity	0.7	0.7	0.5	0.5	0.3	0.7	0.7	0.5	0.5	0.3	
walls	0.5	0.3	0.5	0.3	0.3	0.5	0.3	0.5	0.3	0.3	
working plane	0.2	0.2	0.2	0.2	0.2	0.2	0.2	0.2	0.2	0.2	
Room dimensions		Viewed crosswise					Viewed endwise				
x = 2H y = 2H	2H	20.4	21.3	20.6	21.5	21.6	20.8	21.7	21.0	21.9	22.0
	3H	20.5	21.3	20.7	21.5	21.7	20.8	21.7	21.1	21.9	22.1
	4H	20.5	21.3	20.8	21.6	21.8	20.9	21.7	21.1	21.9	22.1
	6H	20.5	21.3	20.8	21.5	21.8	20.9	21.6	21.2	21.9	22.1
	8H	20.5	21.2	20.8	21.5	21.8	20.8	21.6	21.1	21.8	22.1
	12H	20.5	21.2	20.8	21.4	21.7	20.8	21.5	21.1	21.8	22.0
4H	2H	20.3	21.1	20.5	21.3	21.5	20.6	21.4	20.9	21.7	21.9
	3H	20.5	21.2	20.8	21.4	21.7	20.8	21.5	21.1	21.8	22.0
	4H	20.6	21.2	20.9	21.5	21.8	20.9	21.5	21.2	21.8	22.1
	6H	20.6	21.2	21.0	21.5	21.9	20.9	21.5	21.3	21.8	22.2
	8H	20.6	21.1	21.0	21.5	21.8	20.9	21.4	21.3	21.8	22.1
	12H	20.6	21.0	21.0	21.4	21.8	20.9	21.3	21.3	21.7	22.1
8H	4H	20.5	21.1	20.9	21.4	21.8	20.8	21.4	21.2	21.7	22.1
	6H	20.6	21.0	21.0	21.4	21.9	20.9	21.3	21.3	21.7	22.1
	8H	20.6	21.0	21.1	21.4	21.8	20.9	21.3	21.3	21.7	22.1
	12H	20.6	20.9	21.0	21.3	21.8	20.9	21.2	21.3	21.6	22.1
12H	4H	20.5	21.0	20.9	21.3	21.7	20.8	21.3	21.2	21.6	22.0
	6H	20.6	21.0	21.0	21.4	21.8	20.9	21.3	21.3	21.7	22.1
	8H	20.6	20.9	21.0	21.3	21.8	20.9	21.2	21.3	21.6	22.1
Variations with the observer position at spacings(CIE Pub.117):											
S = 1.0H	+ 2.2 / - 2.9					+ 2.5 / - 3.2					
1.5H	+ 3.8 / - 2.6					+ 4.3 / - 2.8					
2.0H	+ 2.7 / - 1.4					+ 2.9 / - 1.5					

CIE Pub.117, 1125 lm Total Lamp Luminous Flux Correct (8log(F/F0) = 0.4)
 Area: 0.00158963 m2

C Range: 0 - 360DEG	γ Range: 0 - 180DEG
C Interval: For a lens beam angle of 60°	γ Interval: 1.0DEG
Test Speed: HIGH	Test System: EVERFINE GO-SPEX500_V1 SYSTEM V2.00.461
Temperature: 77.54°F	Humidity: 65.0%
Operators: zoe	Test Distance: 124.409" [K=1.0000]
Test Date: 2024-8-20	Remarks: LAMP: BXRH-30G10T0-G-83 Ra: 90
	LENS: PM-1084C 50R
	NO DRIVER: 500mA
	30minutes warm-up

UTILIZATION FACTORS TABLE

Test:U:17.653V I:0.5000A P:8.8265W PF:1.0000 Freq:49.99Hz Lamp Flux:1124.6x1 lm		
NAME: CTL-MM-1.5-30K-60-RD-AD-OPS-SG	TYPE:	WEIGHT:
SPEC.: 3000K	DIM.:	SERIAL No.: 2408201143
MFR.: MERCURY LIGHTING	SUR.: 0.001589625m2	Shielding Angle:

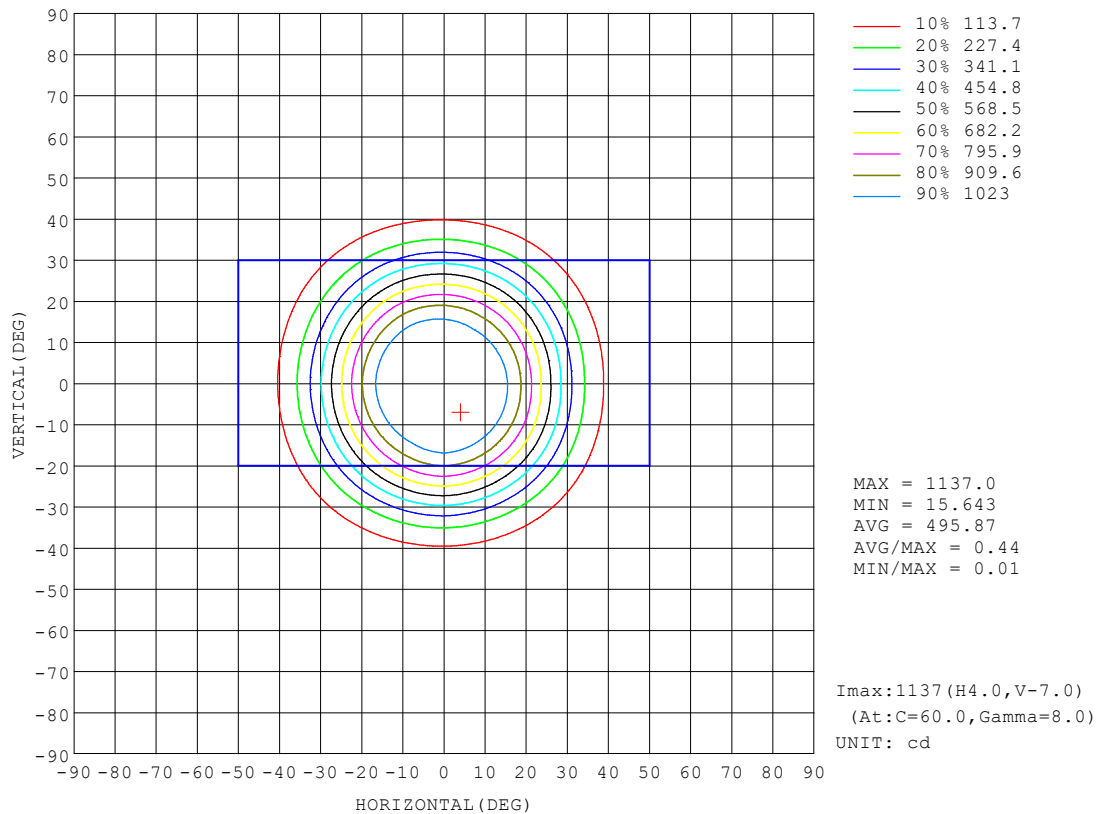
REFLECTANCE										
Ceiling	0.8	0.8	0.8	0.7	0.7	0.7	0.5	0.5	0.5	0
Walls	0.7	0.5	0.3	0.7	0.5	0.3	0.7	0.5	0.3	0
Working plane	0.2	0.2	0.2	0.2	0.2	0.2	0.2	0.2	0.2	0
ROOM INDEX	UTILIZATION FACTORS (PERCENT) $k(RI) \times RCR = 5$									
$k = 0.60$	70	65	62	70	65	62	69	65	62	59
0.80	76	72	68	76	71	68	75	71	68	65
1.00	80	76	72	80	75	72	78	75	72	69
1.25	84	79	76	83	79	76	81	78	75	72
1.50	86	82	79	85	81	79	83	80	78	74
2.00	88	85	82	87	84	81	85	82	80	76
2.50	90	86	84	88	85	83	86	83	82	77
3.00	91	88	86	89	87	85	87	85	83	78
4.00	93	90	88	91	89	87	88	86	85	79
5.00	94	92	90	92	90	89	89	87	86	80
ROOM INDEX	UF(total)									Direct
According to DIN EN 13032-2 2004			Suspended					SHRNOM = 1.25		

C Range: 0 - 360DEG
 C Interval: For a lens beam angle of 60°
 Test Speed: HIGH
 Temperature: 77.54°F
 Operators: zoe
 Test Date: 2024-8-20

γ Range: 0 - 180DEG
 γ Interval: 1.0DEG
 Test System: EVERFINE GO-SPEX500_V1 SYSTEM V2.00.461
 Humidity: 65.0%
 Test Distance: 124.409" [K=1.0000]
 Remarks: LAMP: BXRH-30G10T0-G-83 Ra:90
 LENS: PM-1084C 50R
 NO DRIVER: 500mA
 30minutes warm-up

ISOCANDELA DIAGRAM

Test:U:17.653V I:0.5000A P:8.8265W PF:1.0000 Freq:49.99Hz Lamp Flux:1124.6x1 lm		
NAME: CTL-MM-1.5-30K-60-RD-AD-OPS-SG	TYPE:	WEIGHT:
SPEC.: 3000K	DIM.:	SERIAL No.: 2408201143
MFR.: MERCURY LIGHTING	SUR.: 0.001589625m2	Shielding Angle:



C Range: 0 - 360DEG

C Interval:For a lens beam angle of 60°

Test Speed: HIGH

Temperature:77.54°F

Operators:zoe

Test Date:2024-8-20

γ Range: 0 - 180DEG

γ Interval: 1.0DEG

Test System:EVERFINE GO-SPEX500_V1 SYSTEM V2.00.461

Humidity:65.0%

Test Distance:124.409" [K=1.0000]

Remarks: LAMP:BXRH-30G10T0-G-83 Ra:90

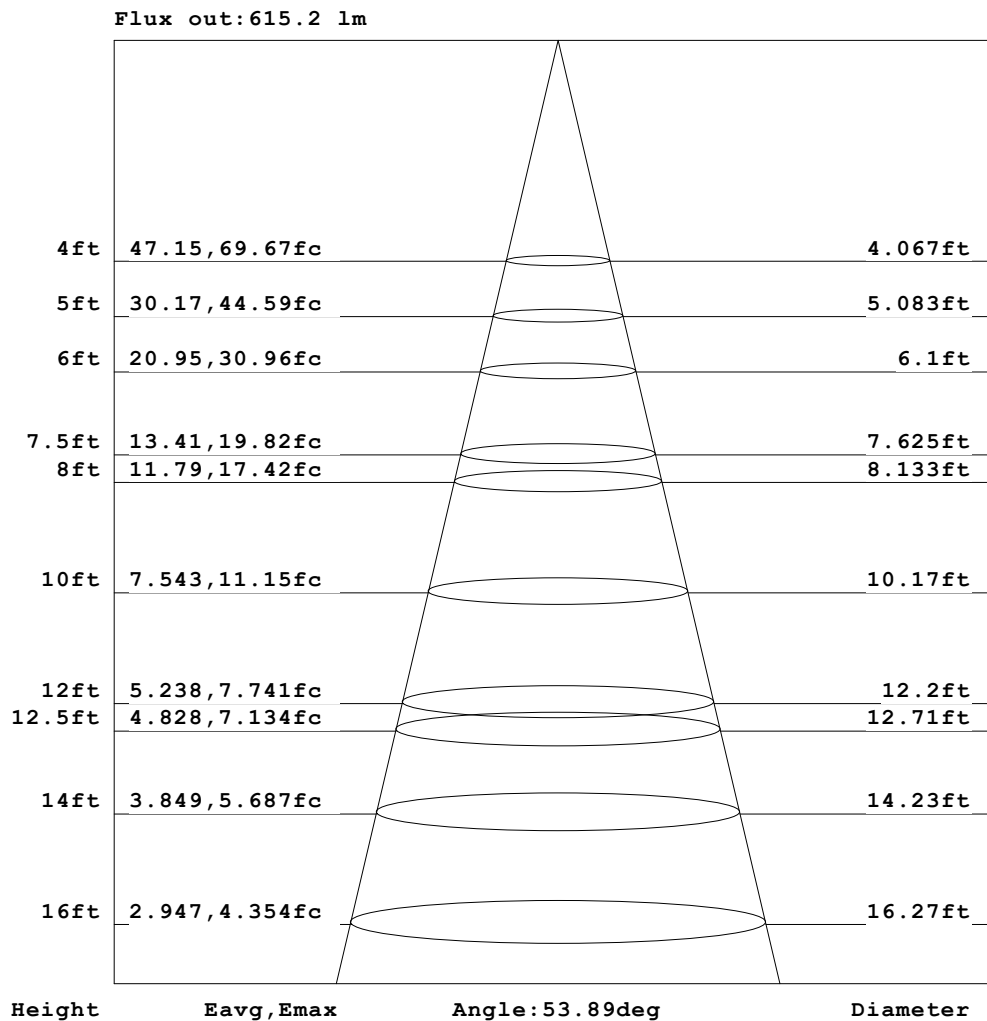
LENS:PM-1084C 50R

NO DRIVER:500mA

30minutes warm-up

AAI Figure

Test:U:17.653V I:0.5000A P:8.8265W PF:1.0000 Freq:49.99Hz Lamp Flux:1124.6x1 lm		
NAME: CTL-MM-1.5-30K-60-RD-AD-OPS-SG	TYPE:	WEIGHT:
SPEC.: 3000K	DIM.:	SERIAL No.: 2408201143
MFR.: MERCURY LIGHTING	SUR.: 0.001589625m2	Shielding Angle:

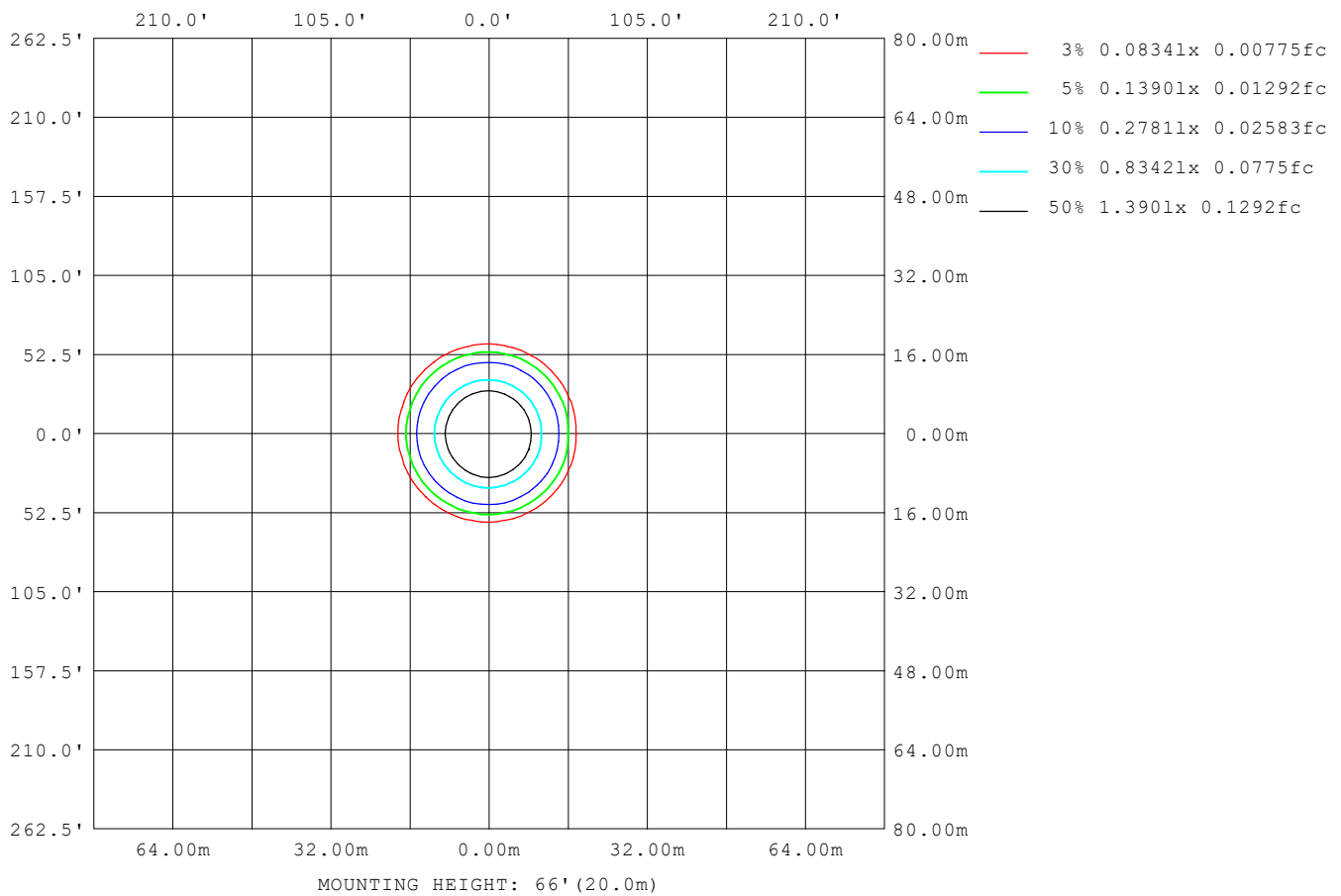


Note: The Curves indicate the illuminated area and the average illumination when the luminaire is at different distance.

C Range: 0 - 360DEG	γ Range: 0 - 180DEG
C Interval: For a lens beam angle of 60°	γ Interval: 1.0DEG
Test Speed: HIGH	Test System: EVERFINE GO-SPEX500_V1 SYSTEM V2.00.461
Temperature: 77.54°F	Humidity: 65.0%
Operators: zoe	Test Distance: 124.409" [K=1.0000]
Test Date: 2024-8-20	Remarks: LAMP: BXRH-30G10T0-G-83 Ra: 90
	LENS: PM-1084C 50R
	NO DRIVER: 500mA
	30minutes warm-up

ISOLUX DIAGRAM

Test:U:17.653V I:0.5000A P:8.8265W PF:1.0000 Freq:49.99Hz Lamp Flux:1124.6x1 lm		
NAME: CTL-MM-1.5-30K-60-RD-AD-OPS-SG	TYPE:	WEIGHT:
SPEC.: 3000K	DIM.:	SERIAL No.: 2408201143
MFR.: MERCURY LIGHTING	SUR.: 0.001589625m2	Shielding Angle:



C Range: 0 - 360DEG

C Interval: For a lens beam angle of 60°

Test Speed: HIGH

Temperature: 77.54°F

Operators: zoe

Test Date: 2024-8-20

γ Range: 0 - 180DEG

γ Interval: 1.0DEG

Test System: EVERFINE GO-SPEX500_V1 SYSTEM V2.00.461

Humidity: 65.0%

Test Distance: 124.409" [K=1.0000]

Remarks: LAMP: BXRH-30G10T0-G-83 Ra: 90

LENS: PM-1084C 50R

NO DRIVER: 500mA

30minutes warm-up

LED Avg.L Report

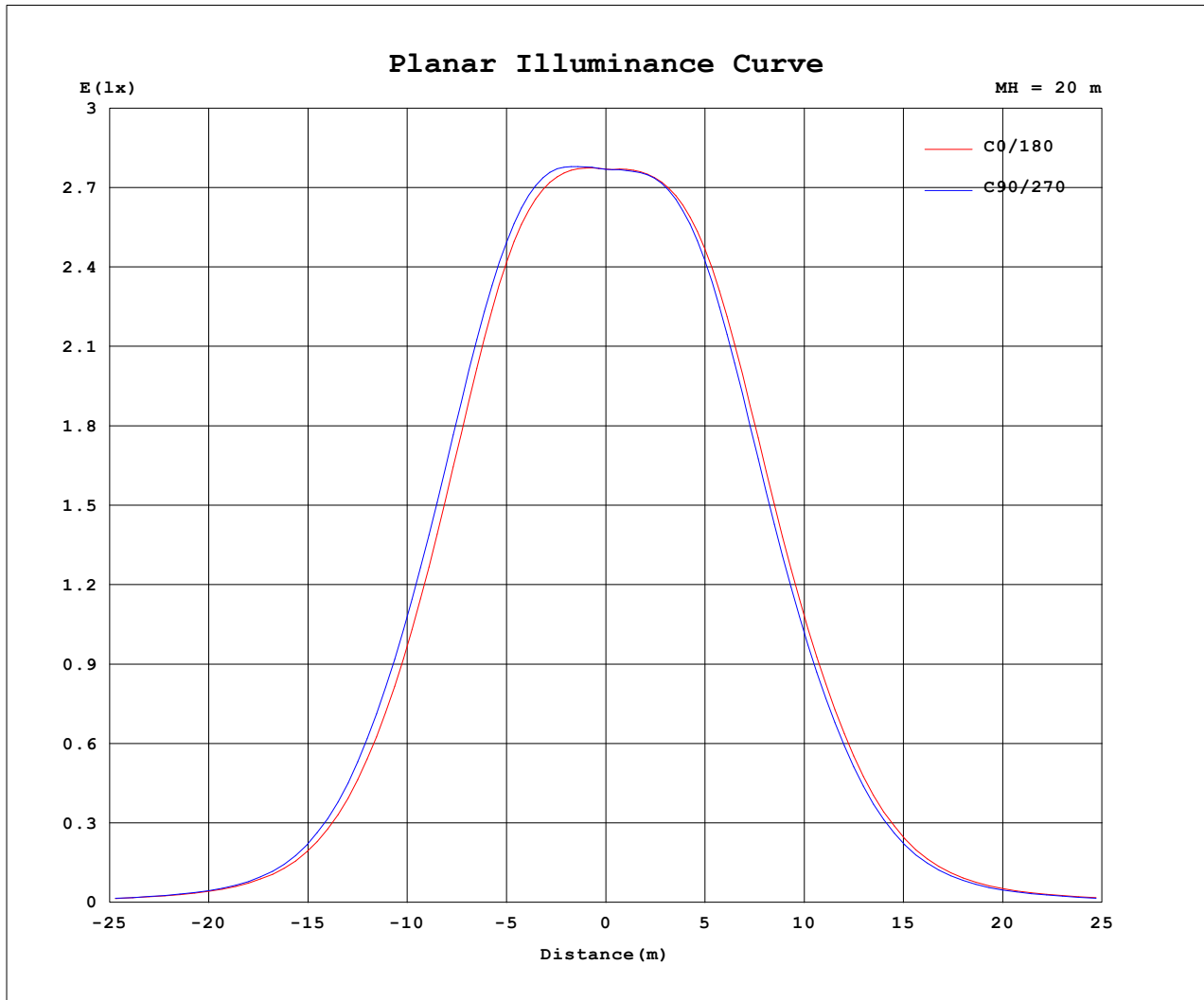
Test:U:17.653V I:0.5000A P:8.8265W PF:1.0000 Freq:49.99Hz Lamp Flux:1124.6x1 lm		
NAME: CTL-MM-1.5-30K-60-RD-AD-OPS-SG	TYPE:	WEIGHT:
SPEC.: 3000K	DIM.:	SERIAL No.: 2408201143
MFR.: MERCURY LIGHTING	SUR.: 0.001589625m2	Shielding Angle:

AvgL	cd/m2
L_0~180 (65) av	13651
L_0~180 (75) av	11793
L_0~180 (85) av	2317
L_90~270 (65) av	13678
L_90~270 (75) av	11764
L_90~270 (85) av	2227
L_45 (65) av	13688
L_45 (75) av	11768
L_45 (85) av	2218

Standard: GB/T 29293-2012

C Range: 0 - 360DEG	γ Range: 0 - 180DEG
C Interval: For a lens beam angle of 60°	γ Interval: 1.0DEG
Test Speed: HIGH	Test System: EVERFINE GO-SPEX500_V1 SYSTEM V2.00.461
Temperature: 77.54°F	Humidity: 65.0%
Operators: zoe	Test Distance: 124.409" [K=1.0000]
Test Date: 2024-8-20	Remarks: LAMP: BXRH-30G10T0-G-83 Ra: 90
	LENS: PM-1084C 50R
	NO DRIVER: 500mA
	30minutes warm-up

Planar Illuminance Curve



C Range: 0 - 360DEG

C Interval: For a lens beam angle of 60°

Test Speed: HIGH

Temperature: 77.54°F

Operators: zoe

Test Date: 2024-8-20

γ Range: 0 - 180DEG

γ Interval: 1.0DEG

Test System: EVERFINE GO-SPEX500_V1 SYSTEM V2.00.461

Humidity: 65.0%

Test Distance: 124.409" [K=1.0000]

Remarks: LAMP: BXRH-30G10T0-G-83 Ra: 90

LENS: PM-1084C 50R

NO DRIVER: 500mA

30minutes warm-up

LUMINOUS DISTRIBUTION INTENSITY DATA

Test:U:17.653V I:0.5000A P:8.8265W PF:1.0000 Freq:49.99Hz Lamp Flux:1124.6x1 lm		
NAME: CTL-MM-1.5-30K-60-RD-AD-OPS-SG	TYPE:	WEIGHT:
SPEC.: 3000K	DIM.:	SERIAL No.: 2408201143
	SUR.: 0.001589625m2	Shielding Angle:

Table--1

UNIT: cd

C (DEG) (DEG)	0	30	60	90	120	150	180	210	240	270	300	330						
0	1108	1108	1108	1108	1108	1108	1108	1108	1108	1108	1108	1108						
5	1119	1124	1127	1125	1122	1117	1117	1118	1117	1116	1114	1115						
10	1113	1125	1132	1134	1124	1117	1118	1123	1122	1112	1104	1104						
15	1036	1048	1060	1073	1059	1060	1063	1060	1056	1040	1023	1026						
20	854	876	893	912	899	901	905	894	887	868	852	850						
25	616	643	659	680	676	675	678	667	658	641	631	622						
30	386	409	419	439	440	443	449	439	432	419	408	397						
35	202	216	219	231	233	241	249	243	238	229	221	211						
40	95.3	99.3	101	106	109	116	121	119	115	109	106	99.0						
45	48.1	49.2	50.2	50.9	52.8	56.2	59.7	59.5	57.0	53.9	52.5	49.3						
50	28.1	28.8	29.3	29.2	29.9	31.4	33.4	33.5	32.5	30.8	30.1	28.6						
55	17.2	17.2	17.3	17.3	17.5	17.8	18.5	18.5	18.6	17.9	17.8	17.2						
60	12.0	11.9	11.8	11.8	11.9	11.9	11.8	12.0	12.1	12.1	12.2	12.1						
65	9.28	9.15	9.07	9.08	9.12	9.12	9.06	9.10	9.18	9.29	9.42	9.40						
70	7.22	7.14	7.10	7.18	7.21	7.24	7.25	7.22	7.24	7.29	7.36	7.32						
75	4.76	4.73	4.71	4.79	4.85	4.91	4.94	4.91	4.92	4.89	4.89	4.83						
80	2.29	2.28	2.28	2.37	2.44	2.53	2.57	2.54	2.52	2.45	2.40	2.33						
85	0.22	0.21	0.22	0.28	0.32	0.39	0.42	0.40	0.39	0.34	0.29	0.24						
90	0.00	0.00	0.00	0.00	0.00	0.00	0.00	0.00	0.00	0.00	0.00	0.00						
95	0.00	0.00	0.00	0.00	0.00	0.00	0.00	0.00	0.00	0.00	0.00	0.00						
100	0.00	0.00	0.00	0.00	0.00	0.00	0.00	0.00	0.00	0.00	0.00	0.00						
105	0.00	0.00	0.00	0.00	0.00	0.00	0.00	0.00	0.00	0.00	0.00	0.00						
110	0.00	0.00	0.00	0.00	0.00	0.00	0.00	0.00	0.00	0.00	0.00	0.00						
115	0.00	0.00	0.00	0.00	0.00	0.00	0.00	0.00	0.00	0.00	0.00	0.00						
120	0.00	0.00	0.00	0.00	0.00	0.00	0.00	0.00	0.00	0.00	0.00	0.00						
125	0.00	0.00	0.00	0.00	0.00	0.00	0.00	0.00	0.00	0.00	0.00	0.00						
130	0.00	0.00	0.00	0.00	0.00	0.00	0.00	0.00	0.00	0.00	0.00	0.00						
135	0.00	0.00	0.00	0.00	0.00	0.00	0.00	0.00	0.00	0.00	0.00	0.00						
140	0.00	0.00	0.00	0.00	0.00	0.00	0.00	0.00	0.00	0.00	0.00	0.00						
145	0.00	0.00	0.00	0.00	0.00	0.00	0.00	0.00	0.00	0.00	0.00	0.00						
150	0.00	0.00	0.00	0.00	0.00	0.00	0.00	0.00	0.00	0.00	0.00	0.00						
155	0.00	0.00	0.00	0.00	0.00	0.00	0.00	0.00	0.00	0.00	0.00	0.00						
160	0.00	0.00	0.00	0.00	0.00	0.00	0.00	0.00	0.00	0.00	0.00	0.00						
165	0.00	0.00	0.00	0.00	0.00	0.00	0.00	0.00	0.00	0.00	0.00	0.00						
170	0.00	0.00	0.00	0.00	0.00	0.00	0.00	0.00	0.00	0.00	0.00	0.00						
175	0.00	0.00	0.00	0.00	0.00	0.00	0.00	0.00	0.00	0.00	0.00	0.00						
180	0.00	0.00	0.00	0.00	0.00	0.00	0.00	0.00	0.00	0.00	0.00	0.00						

C Range: 0 - 360DEG

C Interval: For a lens beam angle of 60°

Test Speed: HIGH

Temperature: 77.54°F

Operators: zoe

Test Date: 2024-8-20

γ Range: 0 - 180DEG

γ Interval: 1.0DEG

Test System: EVERFINE GO-SPEX500_V1 SYSTEM V2.00.461

Humidity: 65.0%

Test Distance: 124.409" [K=1.0000]

Remarks: LAMP: BXRH-30G10T0-G-83 Ra: 90

LENS: PM-1084C 50R

NO DRIVER: 500mA

30minutes warm-up