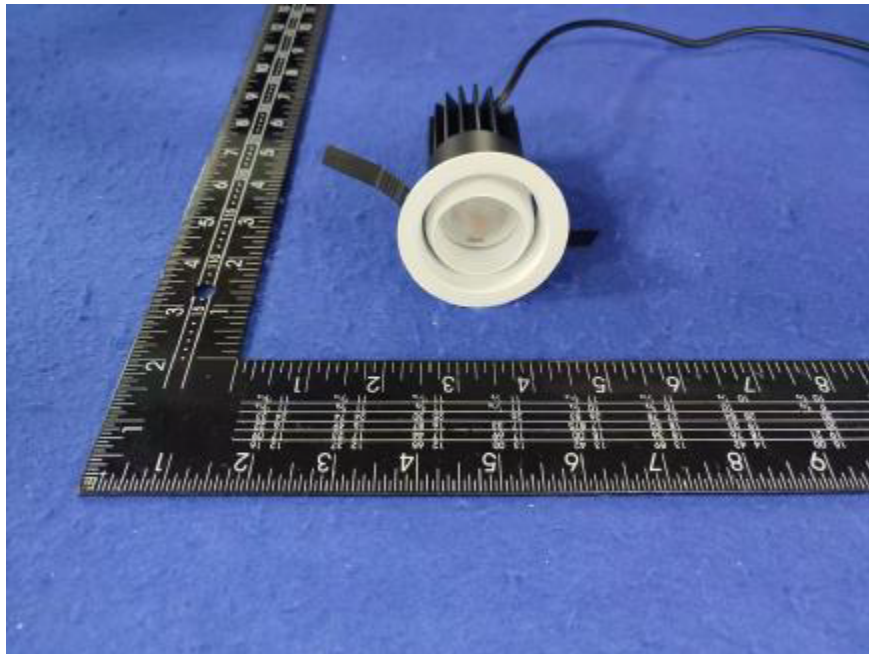


Photometric report for Flanged and Flangeless Trim



Light Output Ratio:	85.1%	
Luminaire Power:	8.825 W	
SHR Nominal:	0.50	Calculated using the TM5
SHR Maximum:	0.65	fine grid method.

C Range: 0 - 360DEG	γ Range: 0 - 180DEG
C Interval: For a lens beam angle of 36°	γ Interval: 1.0DEG
Test Speed: HIGH	Test System: EVERFINE GO-SPEX500_V1 SYSTEM V2.00.461
Temperature: 77.54°F	Humidity: 65.0%
Operators: zoe	Test Distance: 124.409" [K=1.0000]
Test Date: 2024-8-20	Remarks: LAMP: BXRH-30G10T0-G-83 Ra: 90
	LENS: PM-1084B 36R
	NO DRIVER: 500mA
	30minutes warm-up

LUMINOUS INTENSITY DISTRIBUTION DIAGRAM

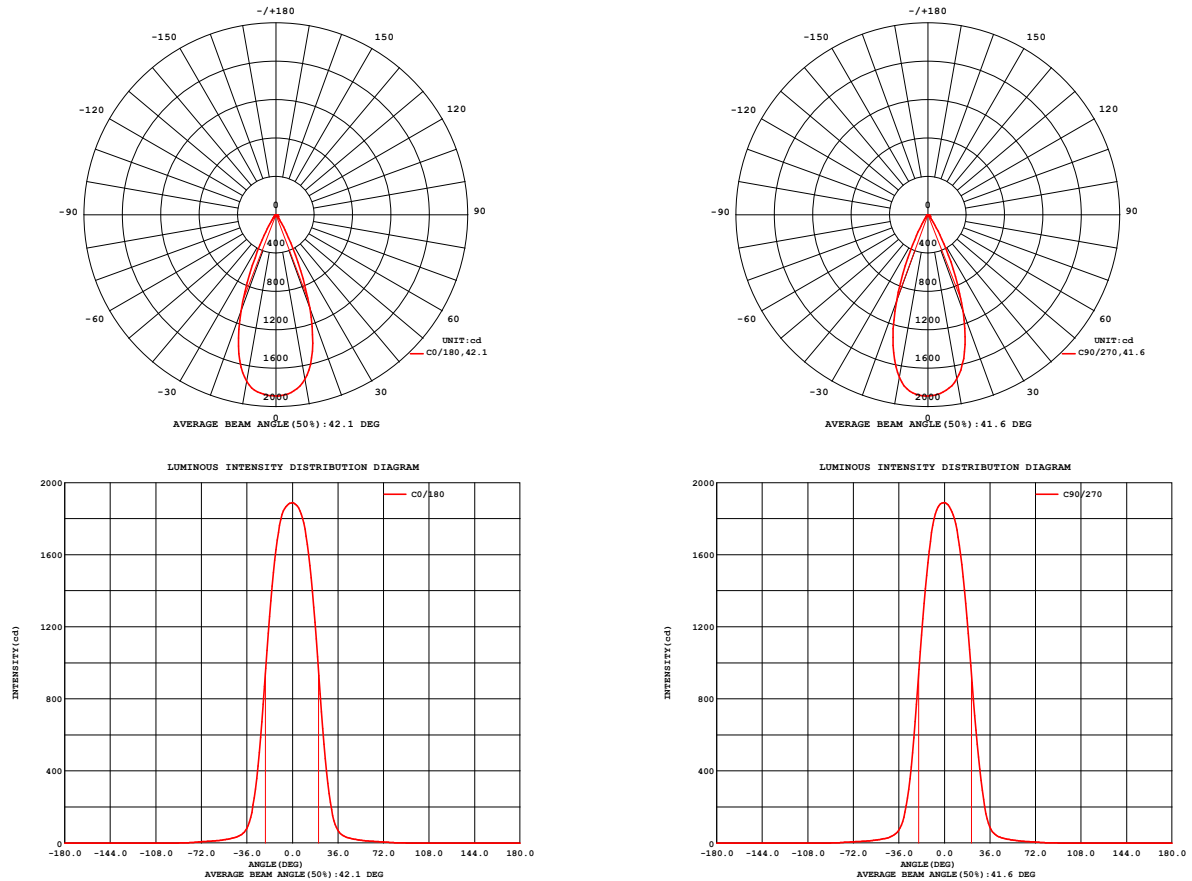


Fig. C0/C180

Fig. C90/C270

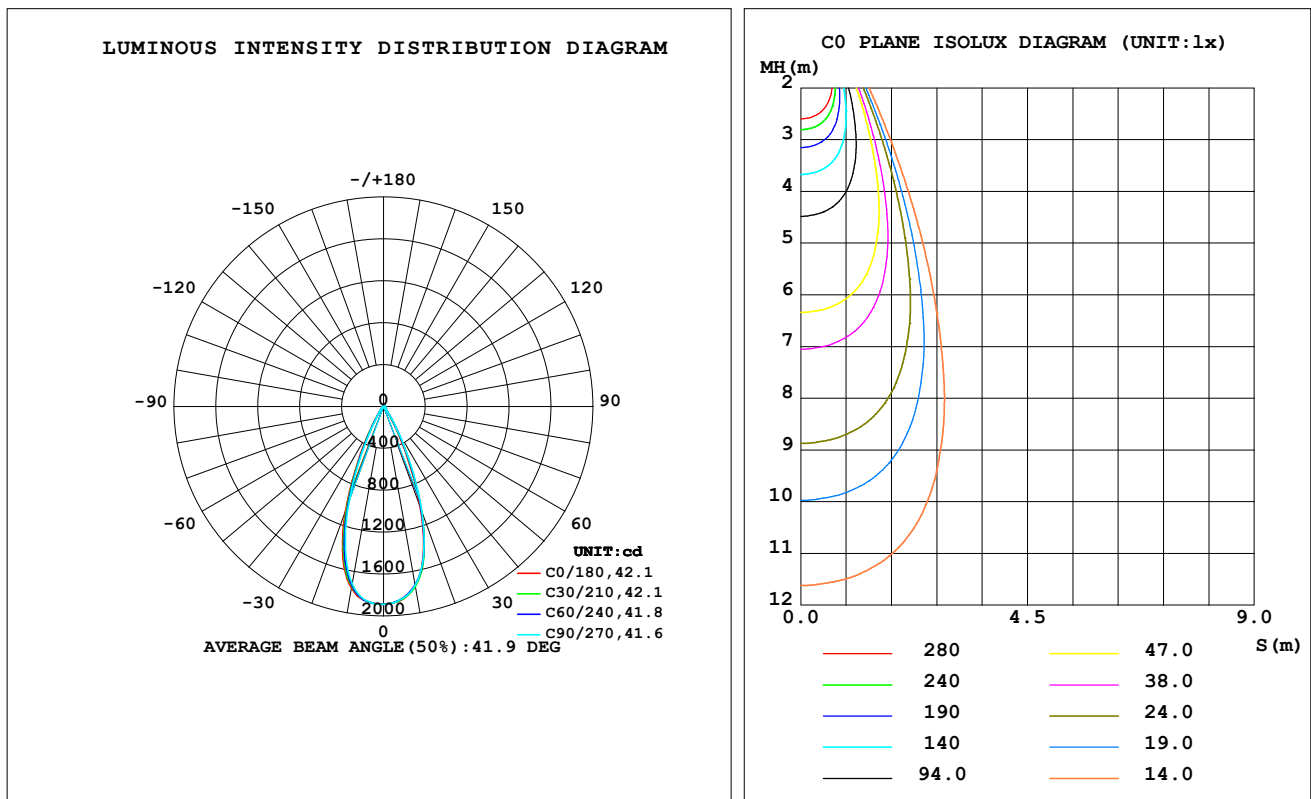
C Range: 0 - 360DEG
 C Interval: For a lens beam angle of 36°
 Test Speed: HIGH
 Temperature: 77.54°F
 Operators: zoe
 Test Date: 2024-8-20

γ Range: 0 - 180DEG
 γ Interval: 1.0DEG
 Test System: EVERFINE GO-SPEX500_V1 SYSTEM V2.00.461
 Humidity: 65.0%
 Test Distance: 124.409" [K=1.0000]
 Remarks: LAMP: BXRH-30G10T0-G-83 Ra: 90
 LENS: PM-1084B 36R
 NO DRIVER: 500mA
 30minutes warm-up

LUMINAIRE PHOTOMETRIC TEST REPORT

Test:U:17.651V I:0.5000A P:8.8255W PF:1.0000 Freq:49.99Hz Lamp Flux:1124.6x1 lm		
NAME: CTL-MM-1.5-30K-36-RD-AD-OPS-SG	TYPE:	WEIGHT:
SPEC.: 3000K	DIM.:	SERIAL No.: 2408201142
MFR.: MERCURY LIGHTING	SUR.: 0.001589625m ²	Shielding Angle:

DATA OF LAMP		PHOTOMETRIC DATA Eff: 108.38 lm/W			
MODEL	Brideglux	I _{max} (cd)	1889	S/MH (C0/180)	0.65
NOMINAL POWER (W)	9	LOR (%)	85.1	S/MH (C90/270)	0.62
RATED VOLTAGE (V)	18	TOTAL FLUX (lm)	956.53	η UP, DN (C0-180)	0.0, 43.5
NOMINAL FLUX (lm)	1124.6	CIE CLASS	DIRECT	η UP, DN (C180-360)	0.0, 41.6
LAMPS INSIDE	1	η up (%)	0.0	CIBSE SHR NOM	0.50
TEST VOLTAGE (V)	18	η down (%)	85.1	CIBSE SHR MAX	0.65



C Range: 0 - 360DEG

C Interval: For a lens beam angle of 36°

Test Speed: HIGH

Temperature: 77.54°F

Operators: zoe

Test Date: 2024-8-20

γ Range: 0 - 180DEG

γ Interval: 1.0DEG

Test System: EVERFINE GO-SPEX500_V1 SYSTEM V2.00.461

Humidity: 65.0%

Test Distance: 124.409" [K=1.0000]

Remarks: LAMP: BXRH-30G10T0-G-83 Ra: 90

LENS: PM-1084B 36R

NO DRIVER: 500mA

30minutes warm-up

ZONAL FLUX DIAGRAM

ZONAL FLUX DIAGRAM:

γ	C0	C45	C90	C135	C180	C225	C270	C315	γ	Φ zone	Φ total	%lum,lamp
10	1742	1739	1736	1757	1764	1743	1722	1747	0- 10	174.1	174.1	18.2,15.5
20	1033	1062	1073	1084	1068	1015	963.3	1014	10- 20	398.6	572.7	59.9,50.9
30	225.6	268.7	292.8	279.3	249.7	226.3	206.8	215.7	20- 30	263.9	836.6	87.5,74.4
40	42.39	45.91	48.43	48.68	47.82	46.71	44.21	42.32	30- 40	67.94	904.6	94.6,80.4
50	19.84	20.35	21.22	22.26	22.56	21.51	20.46	20.10	40- 50	23.35	927.9	97,82.5
60	10.94	10.88	11.20	12.15	12.72	12.17	11.54	11.17	50- 60	14.08	942.0	98.5,83.8
70	6.639	6.126	6.051	6.703	7.654	7.605	7.240	6.956	60- 70	8.980	951.0	99.4,84.6
80	2.037	1.545	1.434	1.802	2.511	3.011	3.128	2.698	70- 80	4.788	955.8	99.9,85
90	0	0	0	0	0	0	0	0	80- 90	0.7641	956.5	100,85.1
100	0	0	0	0	0	0	0	0	90-100	0	956.5	100,85.1
110	0	0	0	0	0	0	0	0	100-110	0	956.5	100,85.1
120	0	0	0	0	0	0	0	0	110-120	0	956.5	100,85.1
130	0	0	0	0	0	0	0	0	120-130	0	956.5	100,85.1
140	0	0	0	0	0	0	0	0	130-140	0	956.5	100,85.1
150	0	0	0	0	0	0	0	0	140-150	0	956.5	100,85.1
160	0	0	0	0	0	0	0	0	150-160	0	956.5	100,85.1
170	0	0	0	0	0	0	0	0	160-170	0	956.5	100,85.1
180	0	0	0	0	0	0	0	0	170-180	0	956.5	100,85.1
DEG	LUMINOUS INTENSITY:cd									UNIT:lm		

C Range: 0 - 360DEG

C Interval:For a lens beam angle of 36°

Test Speed: HIGH

Temperature:77.54°F

Operators:zoe

Test Date:2024-8-20

 γ Range: 0 - 180DEG

 γ Interval: 1.0DEG

Test System:EVERFINE GO-SPEX500_V1 SYSTEM V2.00.461

Humidity:65.0%

Test Distance:124.409" [K=1.0000]

Remarks: LAMP:BXRH-30G10T0-G-83 Ra:90

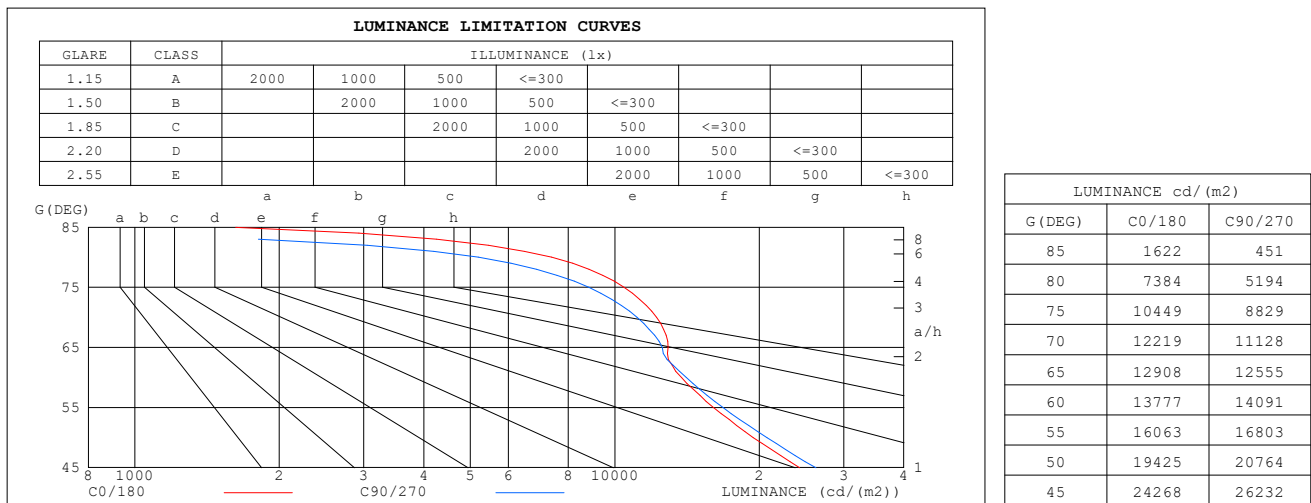
LENS:PM-1084B 36R

NO DRIVER:500mA

30minutes warm-up

LUMINANCE LIMITATION CURVES

Test: U:17.651V I:0.5000A P:8.8255W PF:1.0000 Freq:49.99Hz Lamp Flux: 1124.6x1 lm		
NAME: CTL-MM-1.5-30K-36-RD-AD-OPS-SG	TYPE:	WEIGHT:
SPEC.: 3000K	DIM.:	SERIAL No.: 2408201142
MFR.: MERCURY LIGHTING	SUR.: 0.001589625m2	Shielding Angle:


C Range: 0 - 360DEG

C Interval:For a lens beam angle of 36°

Test Speed: HIGH

Temperature:77.54°F

Operators:zoe

Test Date:2024-8-20

γ Range: 0 - 180DEG

γ Interval: 1.0DEG

Test System:EVERFINE GO-SPEX500_V1 SYSTEM V2.00.461

Humidity:65.0%

Test Distance:124.409" [K=1.0000]

Remarks: LAMP:BXRH-30G10T0-G-83 Ra:90

LENS:PM-1084B 36R

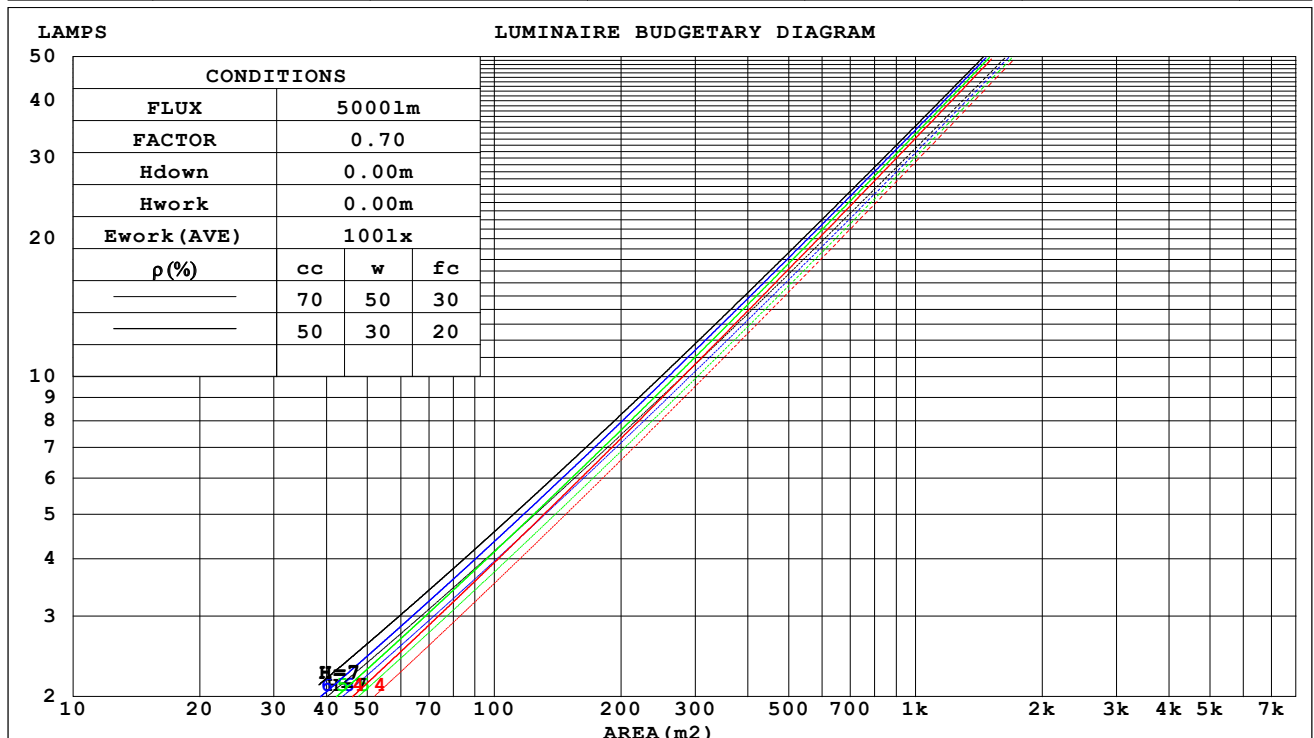
NO DRIVER:500mA

30minutes warm-up

CU AND LUMINAIRE BUDGETARY ESTIMATE DIAGRAM

Test:U:17.651V I:0.5000A P:8.8255W PF:1.0000 Freq:49.99Hz Lamp Flux:1124.6x1 lm		
NAME: CTL-MM-1.5-30K-36-RD-AD-OPS-SG	TYPE:	WEIGHT:
SPEC.: 3000K	DIM.:	SERIAL No.: 2408201142
MFR.: MERCURY LIGHTING	SUR.: 0.001589625m2	Shielding Angle:

pcc	80%			70%			50%			30%			10%			0
pw	50%	30%	10%	50%	30%	10%	50%	30%	10%	50%	30%	10%	50%	30%	10%	0
pfc	20%			20%			20%			20%			20%			0
RCR	RCR:Room Cavity Ratio															



C Range: 0 - 360DEG

C Interval: For a lens beam angle of 36°

Test Speed: HIGH

Temperature: 77.54°F

Operators: zoe

Test Date: 2024-8-20

γ Range: 0 - 180DEG

γ Interval: 1.0DEG

Test System: EVERFINE GO-SPEX500_V1 SYSTEM V2.00.461

Humidity: 65.0%

Test Distance: 124.409" [K=1.0000]

Remarks: LAMP: BXRH-30G10T0-G-83 Ra: 90

LENS: PM-1084B 36R

NO DRIVER: 500mA

30minutes warm-up

WEC AND CCEC

Test:U:17.651V I:0.5000A P:8.8255W PF:1.0000 Freq:49.99Hz Lamp Flux:1124.6x1 lm		
NAME: CTL-MM-1.5-30K-36-RD-AD-OPS-SG	TYPE:	WEIGHT:
SPEC.: 3000K	DIM.:	SERIAL No.: 2408201142
MFR.: MERCURY LIGHTING	SUR.: 0.001589625m2	Shielding Angle:

pcc	80%			70%			50%			30%			10%			0
pw	50%	30%	10%	50%	30%	10%	50%	30%	10%	50%	30%	10%	50%	30%	10%	0
pfc	20%			20%			20%			20%			20%			0
RCR	RCR:Room Cavity Ratio						Wall Exitance Coefficients(WEC)									
0.0																
1.0	.138	.079	.025	.133	.076	.024	.122	.070	.022	.112	.065	.021	.103	.060	.019	
2.0	.130	.071	.022	.126	.069	.021	.117	.065	.020	.109	.061	.019	.101	.057	.018	
3.0	.123	.065	.020	.119	.064	.019	.111	.060	.018	.104	.057	.018	.098	.054	.017	
4.0	.116	.060	.018	.112	.059	.017	.106	.056	.017	.100	.054	.016	.094	.051	.016	
5.0	.110	.056	.016	.107	.055	.016	.101	.053	.015	.096	.051	.015	.091	.049	.015	
6.0	.104	.052	.015	.101	.051	.015	.097	.050	.014	.092	.048	.014	.088	.046	.014	
7.0	.099	.049	.014	.097	.048	.014	.093	.047	.013	.089	.045	.013	.085	.044	.013	
8.0	.095	.046	.013	.093	.046	.013	.089	.044	.013	.085	.043	.012	.082	.042	.012	
9.0	.091	.044	.012	.089	.043	.012	.085	.042	.012	.082	.041	.012	.079	.040	.012	
10.0	.087	.042	.012	.085	.041	.011	.082	.040	.011	.079	.039	.011	.077	.039	.011	

pcc	80%			70%			50%			30%			10%			0
pw	50%	30%	10%	50%	30%	10%	50%	30%	10%	50%	30%	10%	50%	30%	10%	0
pfc	20%			20%			20%			20%			20%			0
RCR	RCR:Room Cavity Ratio						Ceiling Cavity Exitance Coefficients (CCEC)									
0.0	.162	.162	.162	.138	.138	.138	.095	.095	.095	.054	.054	.054	.017	.017	.017	
1.0	.145	.134	.124	.124	.115	.107	.085	.079	.074	.049	.046	.043	.016	.015	.014	
2.0	.131	.113	.098	.112	.097	.084	.077	.067	.059	.044	.039	.035	.014	.013	.011	
3.0	.119	.096	.078	.102	.083	.068	.070	.058	.048	.041	.034	.028	.013	.011	.009	
4.0	.110	.084	.064	.094	.072	.056	.065	.050	.039	.037	.030	.023	.012	.010	.008	
5.0	.102	.074	.053	.087	.064	.046	.060	.044	.033	.035	.026	.019	.011	.009	.006	
6.0	.095	.065	.044	.081	.057	.039	.056	.040	.027	.033	.023	.016	.011	.008	.005	
7.0	.089	.059	.038	.076	.051	.033	.053	.036	.023	.031	.021	.014	.010	.007	.005	
8.0	.084	.053	.032	.072	.046	.028	.050	.032	.020	.029	.019	.012	.009	.006	.004	
9.0	.079	.049	.028	.068	.042	.025	.047	.030	.017	.027	.018	.010	.009	.006	.003	
10.0	.075	.045	.025	.065	.039	.022	.045	.027	.015	.026	.016	.009	.008	.005	.003	

C Range: 0 - 360DEG

C Interval:For a lens beam angle of 36°

Test Speed: HIGH

Temperature:77.54°F

Operators:zoe

Test Date:2024-8-20

γ Range: 0 - 180DEG

γ Interval: 1.0DEG

Test System:EVERFINE GO-SPEX500_V1 SYSTEM V2.00.461

Humidity:65.0%

Test Distance:124.409" [K=1.0000]

Remarks: LAMP:BXRH-30G10T0-G-83 Ra:90

LENS:PM-1084B 36R

NO DRIVER:500mA

30minutes warm-up

UGR(Unified Glare Rating) Table

Test:U:17.651V I:0.5000A P:8.8255W PF:1.0000 Freq:49.99Hz Lamp Flux:1124.6x1 lm											
NAME: CTL-MM-1.5-30K-36-RD-AD-OPS-SG						TYPE:		WEIGHT:			
SPEC.: 3000K						DIM.:		SERIAL No.: 2408201142			
MFR.: MERCURY LIGHTING						SUR.: 0.001589625m2		Shielding Angle:			
ceiling/cavity	0.7	0.7	0.5	0.5	0.3	0.7	0.7	0.5	0.5	0.3	
walls	0.5	0.3	0.5	0.3	0.3	0.5	0.3	0.5	0.3	0.3	
working plane	0.2	0.2	0.2	0.2	0.2	0.2	0.2	0.2	0.2	0.2	
Room dimensions		Viewed crosswise					Viewed endwise				
x = 2H y = 2H	2H	16.2	17.0	16.4	17.2	17.3	16.8	17.7	17.1	17.8	18.0
	3H	16.7	17.5	17.0	17.7	17.9	17.2	18.0	17.5	18.2	18.4
	4H	17.0	17.7	17.2	17.9	18.1	17.3	18.1	17.6	18.3	18.5
	6H	17.1	17.7	17.4	18.0	18.2	17.4	18.0	17.7	18.3	18.5
	8H	17.1	17.7	17.4	18.0	18.2	17.3	18.0	17.6	18.2	18.5
	12H	17.0	17.6	17.3	17.9	18.2	17.3	17.9	17.6	18.2	18.5
4H	2H	16.3	17.0	16.6	17.3	17.5	16.9	17.6	17.2	17.8	18.1
	3H	17.0	17.7	17.3	17.9	18.2	17.4	18.0	17.7	18.3	18.6
	4H	17.3	17.9	17.7	18.2	18.5	17.6	18.2	18.0	18.5	18.8
	6H	17.5	18.0	17.9	18.3	18.7	17.7	18.2	18.0	18.5	18.8
	8H	17.5	18.0	17.9	18.3	18.7	17.6	18.1	18.0	18.5	18.8
	12H	17.4	17.9	17.9	18.2	18.6	17.6	18.0	18.0	18.4	18.8
8H	4H	17.4	17.8	17.7	18.2	18.5	17.6	18.1	18.0	18.4	18.8
	6H	17.5	17.9	18.0	18.3	18.7	17.7	18.1	18.1	18.5	18.9
	8H	17.6	17.9	18.0	18.3	18.7	17.7	18.0	18.1	18.4	18.9
	12H	17.5	17.8	18.0	18.2	18.7	17.6	17.9	18.1	18.3	18.8
12H	4H	17.3	17.7	17.7	18.1	18.5	17.6	18.0	18.0	18.4	18.8
	6H	17.5	17.8	18.0	18.3	18.7	17.7	18.0	18.1	18.4	18.9
	8H	17.5	17.8	18.0	18.2	18.7	17.6	17.9	18.1	18.4	18.8
Variations with the observer position at spacings(CIE Pub.117):											
S = 1.0H	+ 0.8 / - 1.0					+ 1.4 / - 1.3					
1.5H	+ 1.5 / - 0.8					+ 2.5 / - 1.0					
2.0H	+ 1.2 / - 0.8					+ 1.4 / - 1.0					

CIE Pub.117, 1125 lm Total Lamp Luminous Flux Correct (8log(F/F0) = 0.4)
 Area: 0.00158963 m2

C Range: 0 - 360DEG	γ Range: 0 - 180DEG
C Interval: For a lens beam angle of 36°	γ Interval: 1.0DEG
Test Speed: HIGH	Test System: EVERFINE GO-SPEX500_V1 SYSTEM V2.00.461
Temperature: 77.54°F	Humidity: 65.0%
Operators: zoe	Test Distance: 124.409" [K=1.0000]
Test Date: 2024-8-20	Remarks: LAMP: BXRH-30G10T0-G-83 Ra: 90
	LENS: PM-1084B 36R
	NO DRIVER: 500mA
	30minutes warm-up

UTILIZATION FACTORS TABLE

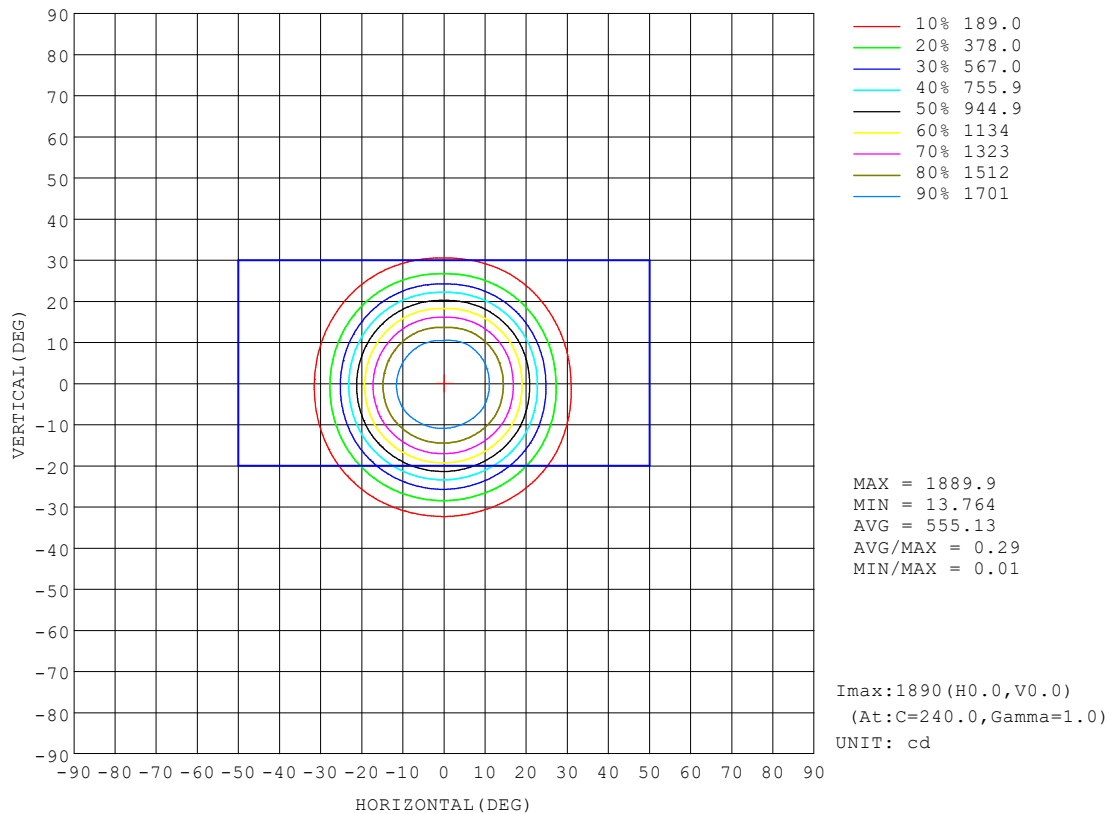
Test:U:17.651V I:0.5000A P:8.8255W PF:1.0000 Freq:49.99Hz Lamp Flux:1124.6x1 lm		
NAME: CTL-MM-1.5-30K-36-RD-AD-OPS-SG	TYPE:	WEIGHT:
SPEC.: 3000K	DIM.:	SERIAL No.: 2408201142
MFR.: MERCURY LIGHTING	SUR.: 0.001589625m2	Shielding Angle:

REFLECTANCE										
Ceiling	0.8	0.8	0.8	0.7	0.7	0.7	0.5	0.5	0.5	0
Walls	0.7	0.5	0.3	0.7	0.5	0.3	0.7	0.5	0.3	0
Working plane	0.2	0.2	0.2	0.2	0.2	0.2	0.2	0.2	0.2	0
ROOM INDEX	UTILIZATION FACTORS (PERCENT) $k(RI) \times RCR = 5$									
$k = 0.60$	75	70	67	75	70	67	74	69	66	63
0.80	81	76	73	81	76	73	80	76	73	70
1.00	85	80	77	84	80	77	83	80	76	73
1.25	88	84	81	87	83	80	85	82	80	76
1.50	90	86	84	89	86	83	87	84	82	78
2.00	92	89	86	91	88	86	89	86	84	80
2.50	94	91	88	92	90	87	90	88	86	81
3.00	95	92	90	94	91	89	91	89	87	82
4.00	97	95	93	95	93	92	92	91	89	83
5.00	98	96	95	96	95	93	93	92	91	84
ROOM INDEX	UF (total)									Direct
According to DIN EN 13032-2 2004			Suspended					SHRNOM = 1.25		

C Range: 0 - 360DEG	γ Range: 0 - 180DEG
C Interval: For a lens beam angle of 36°	γ Interval: 1.0DEG
Test Speed: HIGH	Test System: EVERFINE GO-SPEX500_V1 SYSTEM V2.00.461
Temperature: 77.54°F	Humidity: 65.0%
Operators: zoe	Test Distance: 124.409" [K=1.0000]
Test Date: 2024-8-20	Remarks: LAMP: BXRH-30G10T0-G-83 Ra: 90
	LENS: PM-1084B 36R
	NO DRIVER: 500mA
	30minutes warm-up

ISOCANDELA DIAGRAM

Test:U:17.651V I:0.5000A P:8.8255W PF:1.0000 Freq:49.99Hz Lamp Flux:1124.6x1 lm		
NAME: CTL-MM-1.5-30K-36-RD-AD-OPS-SG	TYPE:	WEIGHT:
SPEC.: 3000K	DIM.:	SERIAL No.: 2408201142
MFR.: MERCURY LIGHTING	SUR.: 0.001589625m2	Shielding Angle:



C Range: 0 - 360DEG

C Interval:For a lens beam angle of 36°

Test Speed: HIGH

Temperature:77.54°F

Operators:zoe

Test Date:2024-8-20

γ Range: 0 - 180DEG

γ Interval: 1.0DEG

Test System:EVERFINE GO-SPEX500_V1 SYSTEM V2.00.461

Humidity:65.0%

Test Distance:124.409" [K=1.0000]

Remarks: LAMP:BXRH-30G10T0-G-83 Ra:90

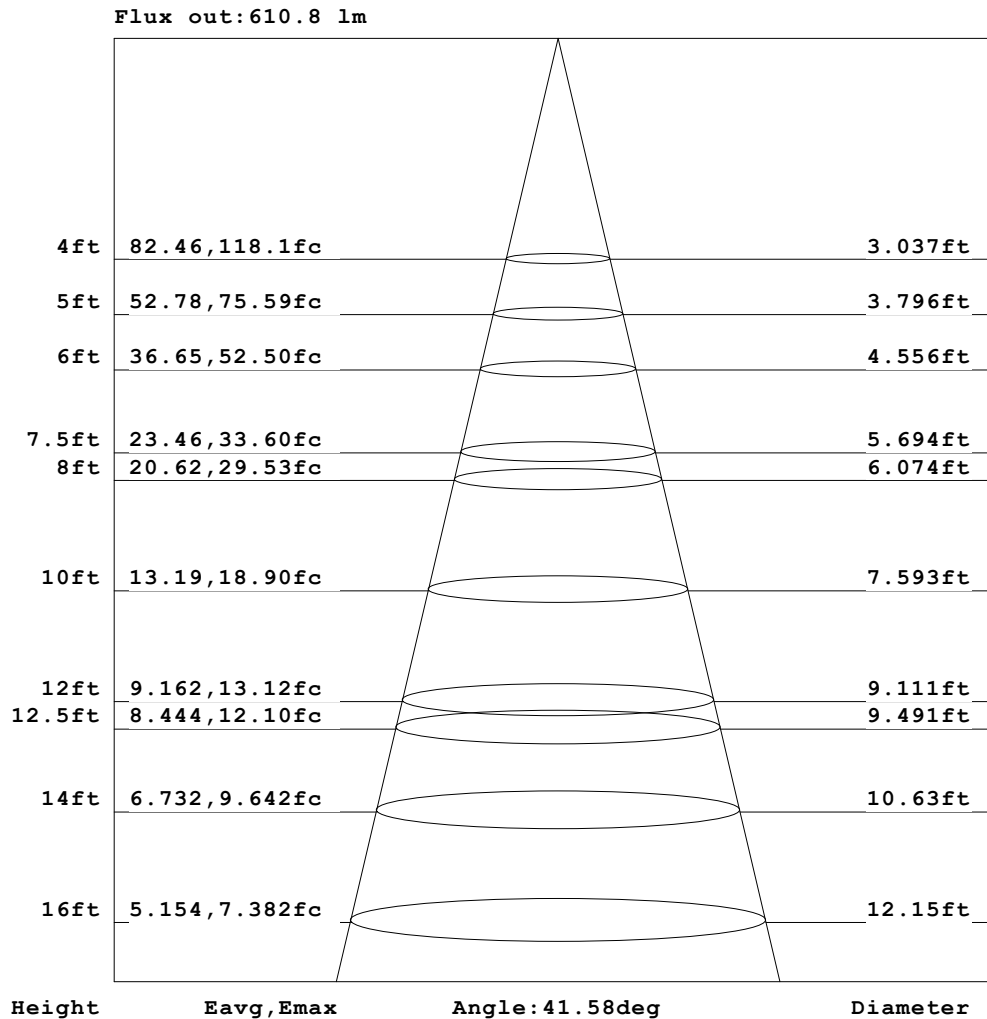
LENS:PM-1084B 36R

NO DRIVER:500mA

30minutes warm-up

AAI Figure

Test:U:17.651V I:0.5000A P:8.8255W PF:1.0000 Freq:49.99Hz Lamp Flux:1124.6x1 lm		
NAME: CTL-MM-1.5-30K-36-RD-AD-OPS-SG	TYPE:	WEIGHT:
SPEC.: 3000K	DIM.:	SERIAL No.: 2408201142
MFR.: MERCURY LIGHTING	SUR.: 0.001589625m2	Shielding Angle:



Note: The Curves indicate the illuminated area and the average illumination when the luminaire is at different distance.

C Range: 0 - 360DEG

C Interval: For a lens beam angle of 36°

Test Speed: HIGH

Temperature: 77.54°F

Operators: zoe

Test Date: 2024-8-20

γ Range: 0 - 180DEG

γ Interval: 1.0DEG

Test System: EVERFINE GO-SPEX500_V1 SYSTEM V2.00.461

Humidity: 65.0%

Test Distance: 124.409" [K=1.0000]

Remarks: LAMP: BXRH-30G10T0-G-83 Ra: 90

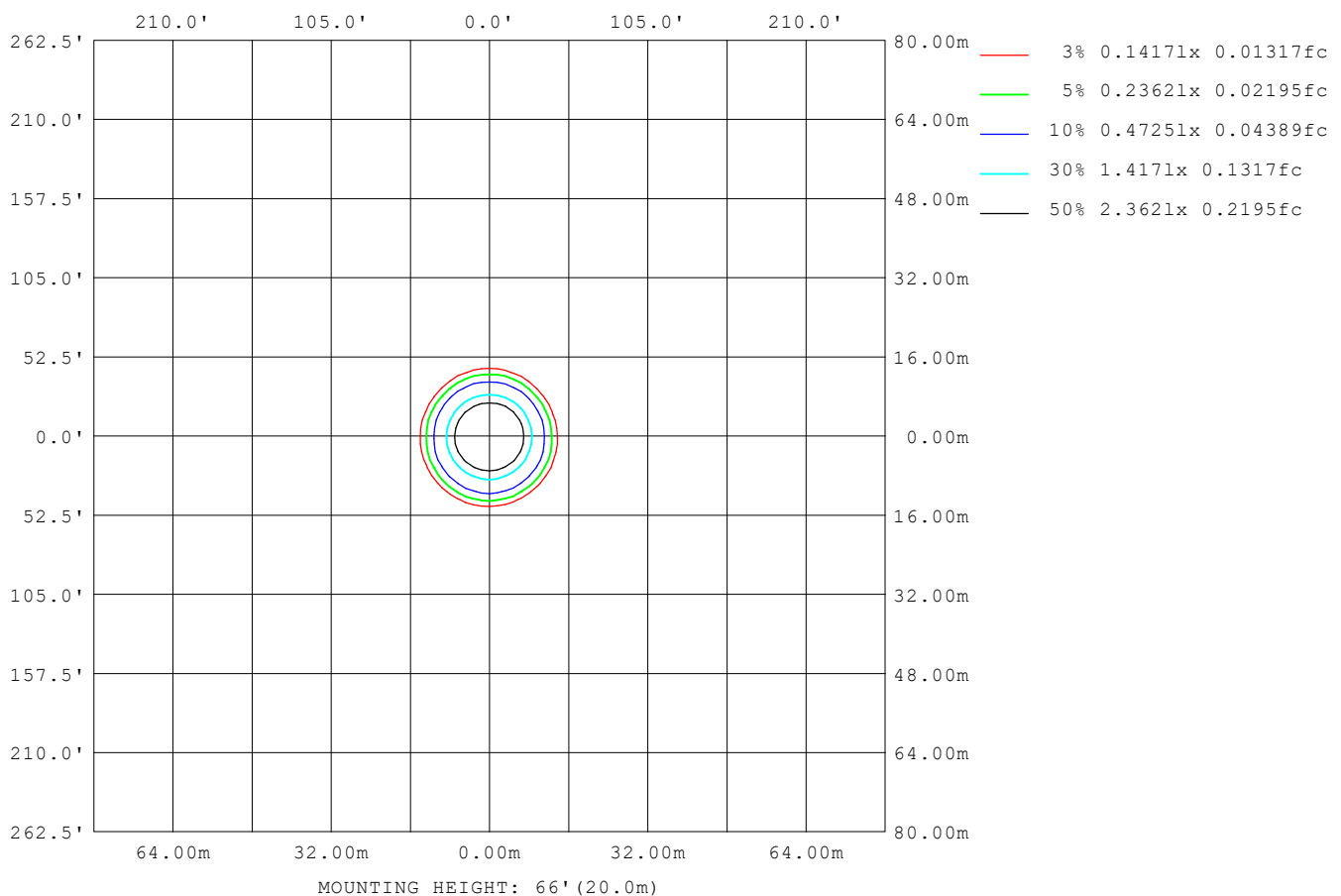
LENS: PM-1084B 36R

NO DRIVER: 500mA

30minutes warm-up

ISOLUX DIAGRAM

Test:U:17.651V I:0.5000A P:8.8255W PF:1.0000 Freq:49.99Hz Lamp Flux:1124.6x1 lm		
NAME: CTL-MM-1.5-30K-36-RD-AD-OPS-SG	TYPE:	WEIGHT:
SPEC.: 3000K	DIM.:	SERIAL No.: 2408201142
MFR.: MERCURY LIGHTING	SUR.: 0.001589625m2	Shielding Angle:



C Range: 0 - 360DEG

C Interval: For a lens beam angle of 36°

Test Speed: HIGH

Temperature: 77.54°F

Operators: zoe

Test Date: 2024-8-20

γ Range: 0 - 180DEG

γ Interval: 1.0DEG

Test System: EVERFINE GO-SPEX500_V1 SYSTEM V2.00.461

Humidity: 65.0%

Test Distance: 124.409" [K=1.0000]

Remarks: LAMP: BXRH-30G10T0-G-83 Ra: 90

LENS: PM-1084B 36R

NO DRIVER: 500mA

30minutes warm-up

LED Avg.L Report

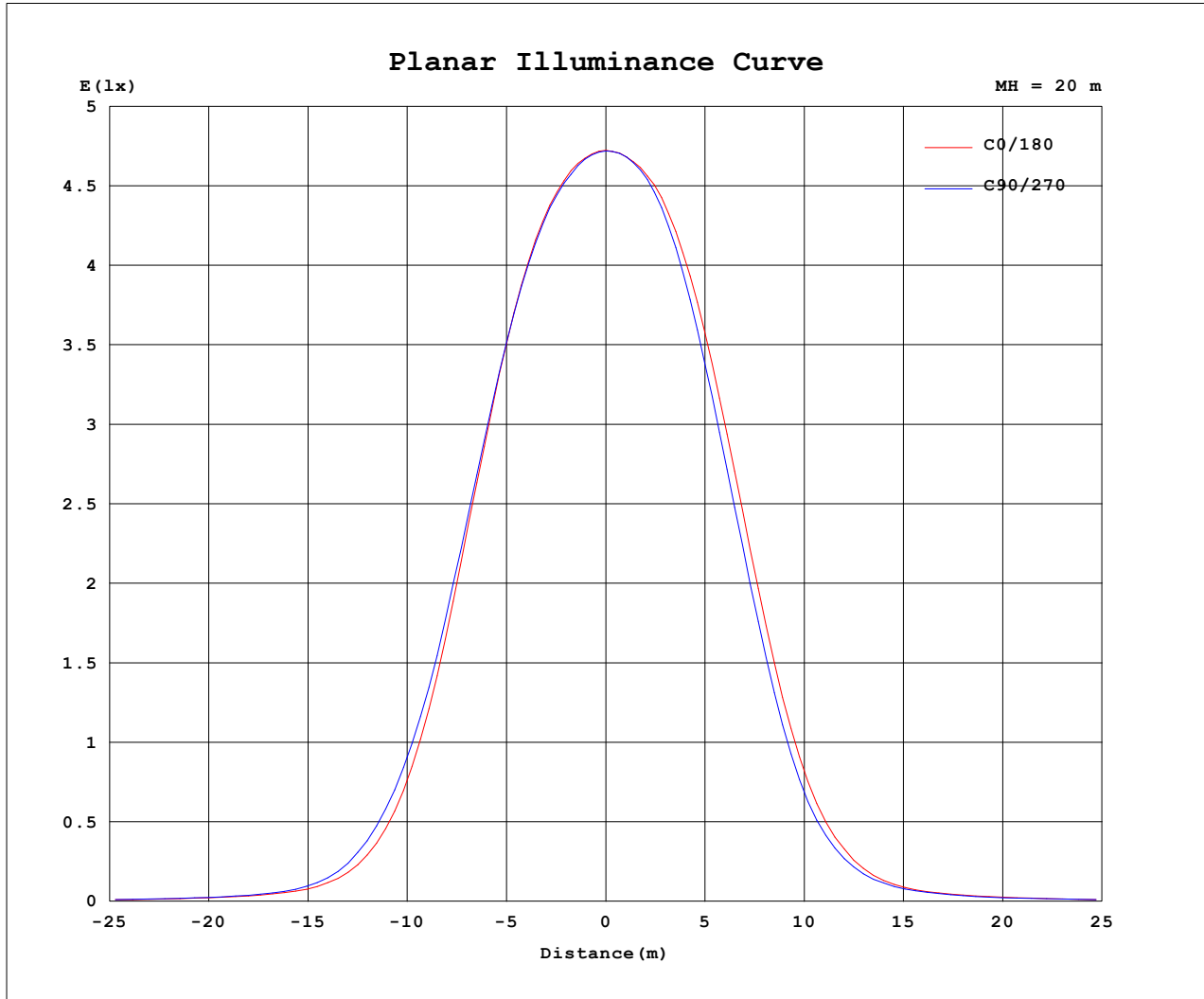
Test:U:17.651V I:0.5000A P:8.8255W PF:1.0000 Freq:49.99Hz Lamp Flux:1124.6x1 lm		
NAME: CTL-MM-1.5-30K-36-RD-AD-OPS-SG	TYPE:	WEIGHT:
SPEC.: 3000K	DIM.:	SERIAL No.: 2408201142
MFR.: MERCURY LIGHTING	SUR.: 0.001589625m2	Shielding Angle:

AvgL	cd/m2
L_0~180 (65) av	13772
L_0~180 (75) av	11281
L_0~180 (85) av	2438
L_90~270 (65) av	13106
L_90~270 (75) av	10726
L_90~270 (85) av	3484
L_45 (65) av	13409
L_45 (75) av	11018
L_45 (85) av	2902

Standard: GB/T 29293-2012

C Range: 0 - 360DEG	γ Range: 0 - 180DEG
C Interval: For a lens beam angle of 36°	γ Interval: 1.0DEG
Test Speed: HIGH	Test System: EVERFINE GO-SPEX500_V1 SYSTEM V2.00.461
Temperature: 77.54°F	Humidity: 65.0%
Operators: zoe	Test Distance: 124.409" [K=1.0000]
Test Date: 2024-8-20	Remarks: LAMP: BXRH-30G10T0-G-83 Ra: 90
	LENS: PM-1084B 36R
	NO DRIVER: 500mA
	30minutes warm-up

Planar Illuminance Curve



C Range: 0 - 360DEG

C Interval: For a lens beam angle of 36°

Test Speed: HIGH

Temperature: 77.54°F

Operators: zoe

Test Date: 2024-8-20

γ Range: 0 - 180DEG

γ Interval: 1.0DEG

Test System: EVERFINE GO-SPEX500_V1 SYSTEM V2.00.461

Humidity: 65.0%

Test Distance: 124.409" [K=1.0000]

Remarks: LAMP: BXRH-30G10T0-G-83 Ra: 90

LENS: PM-1084B 36R

NO DRIVER: 500mA

30minutes warm-up

LUMINOUS DISTRIBUTION INTENSITY DATA

Test:U:17.651V I:0.5000A P:8.8255W PF:1.0000 Freq:49.99Hz Lamp Flux:1124.6x1 lm		
NAME: CTL-MM-1.5-30K-36-RD-AD-OPS-SG	TYPE:	WEIGHT:
SPEC.: 3000K	DIM.:	SERIAL No.: 2408201142
MFR.: MERCURY LIGHTING	SUR.: 0.001589625m2	Shielding Angle:

Table--1

UNIT: cd

C (DEG) γ (DEG)	0	30	60	90	120	150	180	210	240	270	300	330						
0	1889	1889	1889	1889	1889	1889	1889	1889	1889	1889	1889	1889						
5	1859	1855	1849	1851	1853	1862	1867	1864	1865	1862	1867	1862						
10	1742	1746	1731	1736	1746	1768	1764	1747	1739	1722	1748	1747						
15	1471	1490	1478	1477	1495	1515	1500	1473	1446	1411	1447	1468						
20	1033	1063	1060	1073	1080	1088	1068	1031	998	963	1000	1027						
25	548	590	603	626	621	611	585	556	528	499	522	533						
30	226	261	276	293	287	271	250	230	223	207	218	213						
35	86.6	96.8	102	109	109	104	96.8	90.2	88.9	85.1	84.5	82.7						
40	42.4	45.3	46.5	48.4	48.6	48.7	47.8	46.9	46.5	44.2	43.2	41.4						
45	27.3	28.1	28.6	29.5	30.1	30.9	31.0	29.7	28.7	27.7	27.2	26.8						
50	19.8	20.2	20.5	21.2	22.0	22.6	22.6	21.8	21.2	20.5	20.3	19.9						
55	14.6	14.7	14.8	15.3	16.1	16.6	16.8	16.3	15.8	15.2	15.0	14.8						
60	10.9	10.8	10.9	11.2	11.9	12.4	12.7	12.4	11.9	11.5	11.3	11.1						
65	8.67	8.50	8.33	8.44	8.82	9.44	9.84	9.73	9.43	9.17	8.99	8.84						
70	6.64	6.26	5.99	6.05	6.39	7.02	7.65	7.72	7.49	7.24	7.04	6.87						
75	4.30	3.88	3.61	3.63	3.88	4.38	4.99	5.34	5.39	5.19	5.01	4.77						
80	2.04	1.66	1.43	1.43	1.61	2.00	2.51	2.89	3.13	3.13	2.90	2.49						
85	0.22	0.10	0.07	0.06	0.07	0.17	0.45	0.72	0.91	0.90	0.73	0.46						
90	0.00	0.00	0.00	0.00	0.00	0.00	0.00	0.00	0.00	0.00	0.00	0.00						
95	0.00	0.00	0.00	0.00	0.00	0.00	0.00	0.00	0.00	0.00	0.00	0.00						
100	0.00	0.00	0.00	0.00	0.00	0.00	0.00	0.00	0.00	0.00	0.00	0.00						
105	0.00	0.00	0.00	0.00	0.00	0.00	0.00	0.00	0.00	0.00	0.00	0.00						
110	0.00	0.00	0.00	0.00	0.00	0.00	0.00	0.00	0.00	0.00	0.00	0.00						
115	0.00	0.00	0.00	0.00	0.00	0.00	0.00	0.00	0.00	0.00	0.00	0.00						
120	0.00	0.00	0.00	0.00	0.00	0.00	0.00	0.00	0.00	0.00	0.00	0.00						
125	0.00	0.00	0.00	0.00	0.00	0.00	0.00	0.00	0.00	0.00	0.00	0.00						
130	0.00	0.00	0.00	0.00	0.00	0.00	0.00	0.00	0.00	0.00	0.00	0.00						
135	0.00	0.00	0.00	0.00	0.00	0.00	0.00	0.00	0.00	0.00	0.00	0.00						
140	0.00	0.00	0.00	0.00	0.00	0.00	0.00	0.00	0.00	0.00	0.00	0.00						
145	0.00	0.00	0.00	0.00	0.00	0.00	0.00	0.00	0.00	0.00	0.00	0.00						
150	0.00	0.00	0.00	0.00	0.00	0.00	0.00	0.00	0.00	0.00	0.00	0.00						
155	0.00	0.00	0.00	0.00	0.00	0.00	0.00	0.00	0.00	0.00	0.00	0.00						
160	0.00	0.00	0.00	0.00	0.00	0.00	0.00	0.00	0.00	0.00	0.00	0.00						
165	0.00	0.00	0.00	0.00	0.00	0.00	0.00	0.00	0.00	0.00	0.00	0.00						
170	0.00	0.00	0.00	0.00	0.00	0.00	0.00	0.00	0.00	0.00	0.00	0.00						
175	0.00	0.00	0.00	0.00	0.00	0.00	0.00	0.00	0.00	0.00	0.00	0.00						
180	0.00	0.00	0.00	0.00	0.00	0.00	0.00	0.00	0.00	0.00	0.00	0.00						

C Range: 0 - 360DEG

C Interval: For a lens beam angle of 36°

Test Speed: HIGH

Temperature: 77.54°F

Operators: zoe

Test Date: 2024-8-20

γ Range: 0 - 180DEG

γ Interval: 1.0DEG

Test System: EVERFINE GO-SPEX500_V1 SYSTEM V2.00.461

Humidity: 65.0%

Test Distance: 124.409" [K=1.0000]

Remarks: LAMP: BXRH-30G10T0-G-83 Ra: 90

LENS: PM-1084B 36R

NO DRIVER: 500mA

30minutes warm-up