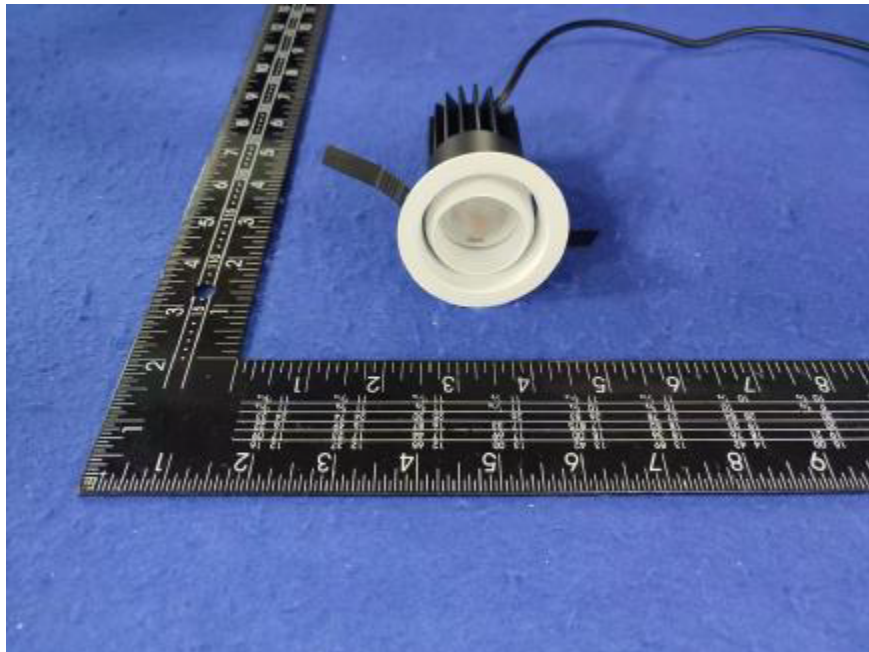


Photometric report for Flanged and Flangeless Trim



Light Output Ratio:	85.8%	
Luminaire Power:	8.825 W	
SHR Nominal:	0.00	Calculated using the TM5
SHR Maximum:	0.30	fine grid method.

C Range: 0 - 360DEG  
C Interval: For a lens beam angle of 24°  
Test Speed: HIGH  
Temperature: 77.54°F  
Operators: zoe  
Test Date: 2024-8-20

γ Range: 0 - 180DEG  
γ Interval: 1.0DEG  
Test System: EVERFINE GO-SPEX500\_V1 SYSTEM V2.00.461  
Humidity: 65.0%  
Test Distance: 124.409" [K=1.0000]  
Remarks: LAMP: BXRH-30G10T0-G-83 Ra:90  
LENS: PM-1084A 24R  
NO DRIVER: 500mA  
30minutes warm-up

LUMINOUS INTENSITY DISTRIBUTION DIAGRAM

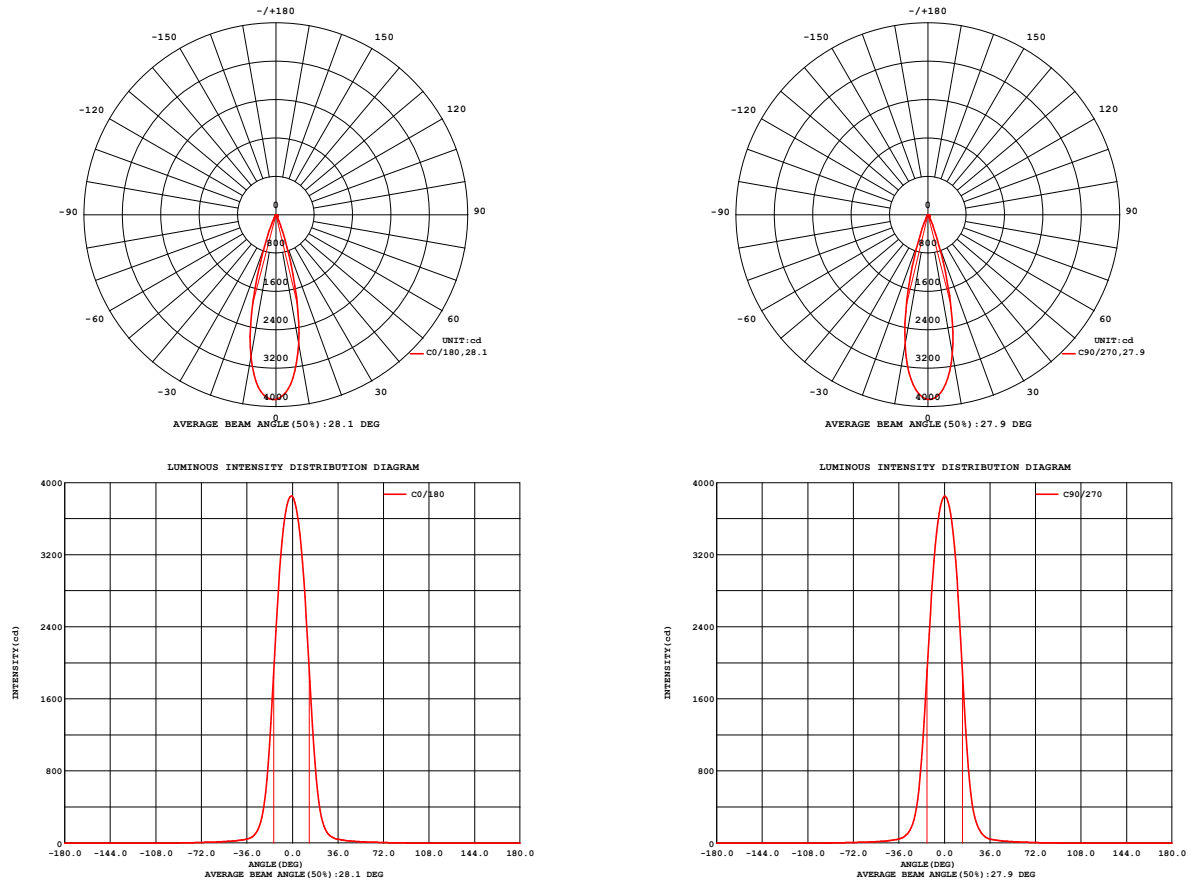


Fig. C0/C180

Fig. C90/C270

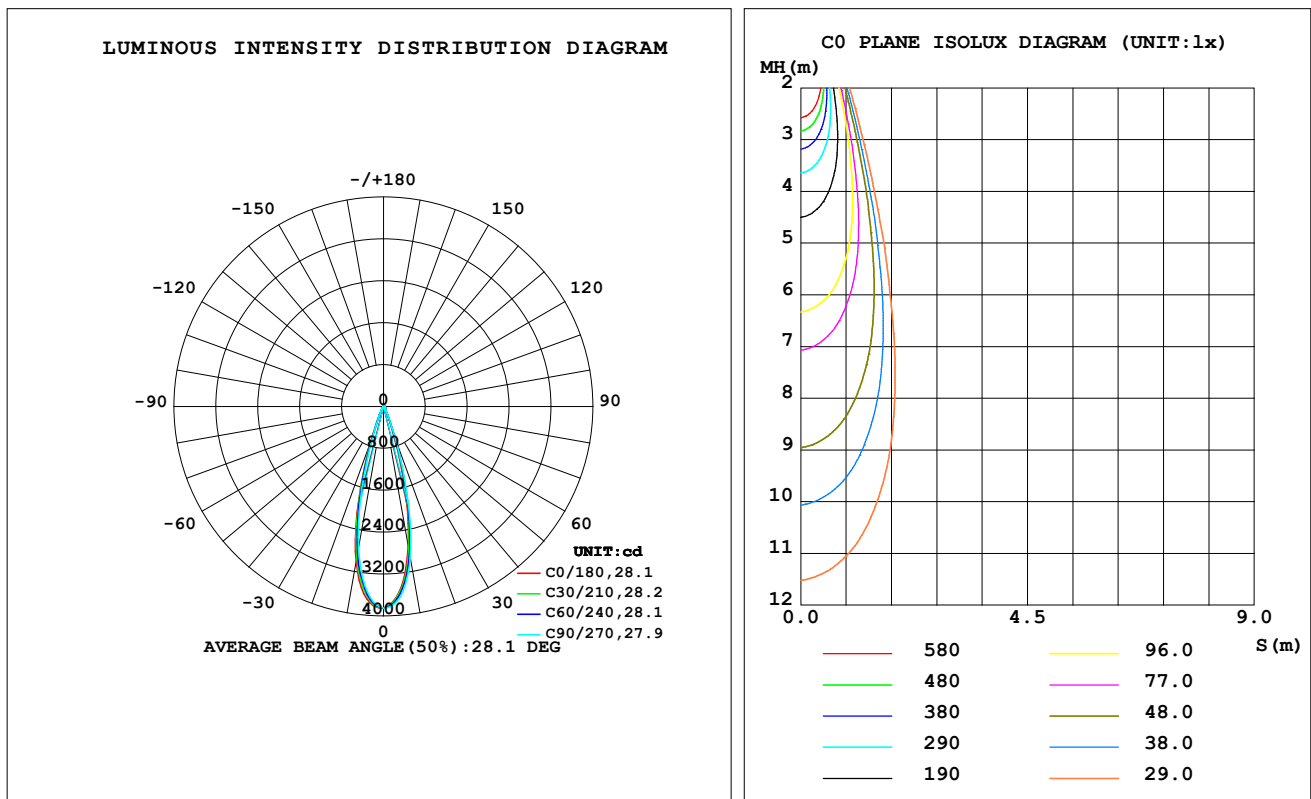
C Range: 0 - 360DEG  
C Interval: For a lens beam angle of 24°  
Test Speed: HIGH  
Temperature: 77.54°F  
Operators: zoe  
Test Date: 2024-8-20

γ Range: 0 - 180DEG  
γ Interval: 1.0DEG  
Test System: EVERFINE GO-SPEX500\_V1 SYSTEM V2.00.461  
Humidity: 65.0%  
Test Distance: 124.409" [K=1.0000]  
Remarks: LAMP: BXRH-30G10T0-G-83 Ra: 90  
LENS: PM-1084A 24R  
NO DRIVER: 500mA  
30minutes warm-up

## LUMINAIRE PHOTOMETRIC TEST REPORT

Test:U:17.650V I:0.5000A P:8.8250W PF:1.0000 Freq:49.99Hz Lamp Flux:1124.6x1 lm		
NAME: CTL-MM-1.5-30K-24-RD-AD-OPS-SG	TYPE:	WEIGHT:
SPEC.: 3000K	DIM.:	SERIAL No.: 2408201136
MFR.: MERCURY LIGHTING	SUR.: 0.001589625m <sup>2</sup>	Shielding Angle:

DATA OF LAMP		PHOTOMETRIC DATA Eff: 109.34 lm/W			
MODEL	Brideglux	I <sub>max</sub> (cd)	3854	S/MH (C0/180)	0.46
NOMINAL POWER (W)	9	LOR (%)	85.8	S/MH (C90/270)	0.44
RATED VOLTAGE (V)	18	TOTAL FLUX (lm)	964.95	η UP, DN (C0-180)	0.0, 43.3
NOMINAL FLUX (lm)	1124.6	CIE CLASS	DIRECT	η UP, DN (C180-360)	0.0, 42.5
LAMPS INSIDE	1	η up (%)	0.0	CIBSE SHR NOM	0.00
TEST VOLTAGE (V)	18	η down (%)	85.8	CIBSE SHR MAX	0.30



C Range: 0 - 360DEG

C Interval: For a lens beam angle of 24°

Test Speed: HIGH

Temperature: 77.54°F

Operators: zoe

Test Date: 2024-8-20

γ Range: 0 - 180DEG

γ Interval: 1.0DEG

Test System: EVERFINE GO-SPEX500\_V1 SYSTEM V2.00.461

Humidity: 65.0%

Test Distance: 124.409" [K=1.0000]

Remarks: LAMP: BXRH-30G10T0-G-83 Ra: 90

LENS: PM-1084A 24R

NO DRIVER: 500mA

30minutes warm-up

## ZONAL FLUX DIAGRAM

### ZONAL FLUX DIAGRAM:

$\gamma$	C0	C45	C90	C135	C180	C225	C270	C315	$\gamma$	$\Phi$ zone	$\Phi$ total	%lum,lamp
10	2731	2828	2940	3027	3013	2903	2756	2730	0- 10	321.0	321.0	33.3,28.5
20	568.8	635.2	681.5	721.2	710.4	673.2	600.1	588.1	10- 20	450.7	771.6	80,68.6
30	77.80	89.67	97.52	94.43	86.55	92.36	90.13	81.67	20- 30	116.7	888.3	92.1,79
40	32.04	32.79	33.30	33.62	33.35	34.57	33.57	32.52	30- 40	32.30	920.6	95.4,81.9
50	17.19	17.34	17.92	18.72	19.11	18.68	18.03	17.51	40- 50	18.88	939.5	97.4,83.5
60	9.853	9.730	10.16	10.75	11.09	10.70	10.37	10.02	50- 60	12.23	951.7	98.6,84.6
70	6.046	5.683	5.695	6.206	6.879	6.843	6.604	6.339	60- 70	8.104	959.8	99.5,85.3
80	1.827	1.407	1.362	1.749	2.384	2.804	2.874	2.423	70- 80	4.416	964.2	99.9,85.7
90	0	0	0	0	0	0	0	0	80- 90	0.7085	965.0	100,85.8
100	0	0	0	0	0	0	0	0	90-100	0	965.0	100,85.8
110	0	0	0	0	0	0	0	0	100-110	0	965.0	100,85.8
120	0	0	0	0	0	0	0	0	110-120	0	965.0	100,85.8
130	0	0	0	0	0	0	0	0	120-130	0	965.0	100,85.8
140	0	0	0	0	0	0	0	0	130-140	0	965.0	100,85.8
150	0	0	0	0	0	0	0	0	140-150	0	965.0	100,85.8
160	0	0	0	0	0	0	0	0	150-160	0	965.0	100,85.8
170	0	0	0	0	0	0	0	0	160-170	0	965.0	100,85.8
180	0	0	0	0	0	0	0	0	170-180	0	965.0	100,85.8
DEG	LUMINOUS INTENSITY:cd									UNIT:lm		

C Range: 0 - 360DEG

C Interval:For a lens beam angle of 24°

Test Speed: HIGH

Temperature:77.54°F

Operators:zoe

Test Date:2024-8-20

 $\gamma$  Range: 0 - 180DEG

 $\gamma$  Interval: 1.0DEG

Test System:EVERFINE GO-SPEX500\_V1 SYSTEM V2.00.461

Humidity:65.0%

Test Distance:124.409" [K=1.0000]

Remarks: LAMP:BXRH-30G10T0-G-83 Ra:90

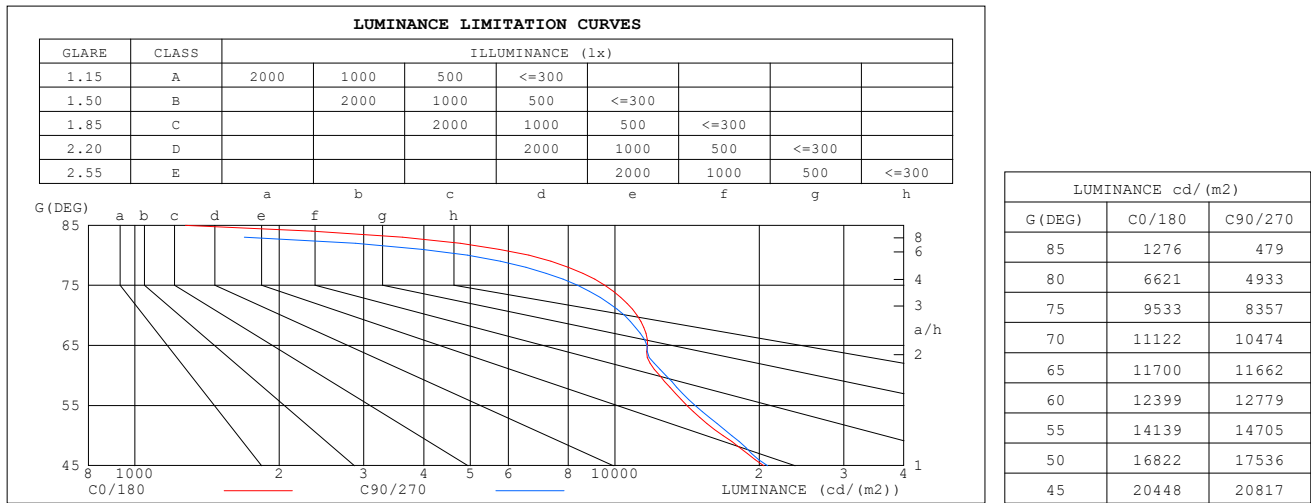
LENS:PM-1084A 24R

NO DRIVER:500mA

30minutes warm-up

LUMINANCE LIMITATION CURVES

Test:U:17.650V I:0.5000A P:8.8250W PF:1.0000 Freq:49.99Hz Lamp Flux:1124.6x1 lm		
NAME: CTL-MM-1.5-30K-24-RD-AD-OPS-SG	TYPE:	WEIGHT:
SPEC.: 3000K	DIM.:	SERIAL No.: 2408201136
MFR.: MERCURY LIGHTING	SUR.: 0.001589625m2	Shielding Angle:

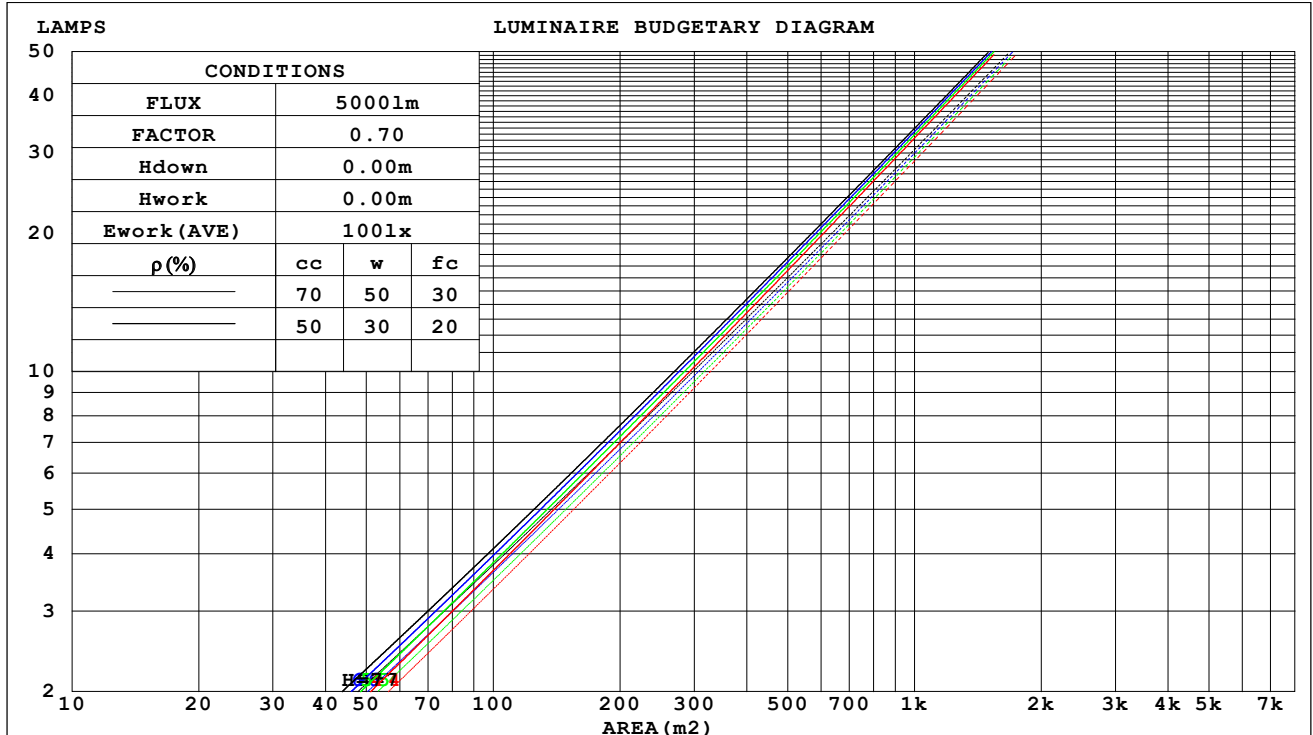


C Range: 0 - 360DEG	γ Range: 0 - 180DEG
C Interval: For a lens beam angle of 24°	γ Interval: 1.0DEG
Test Speed: HIGH	Test System: EVERFINE GO-SPEX500_V1 SYSTEM V2.00.461
Temperature: 77.54°F	Humidity: 65.0%
Operators: zoe	Test Distance: 124.409" [K=1.0000]
Test Date: 2024-8-20	Remarks: LAMP: BXRH-30G10T0-G-83 Ra: 90
	LENS: PM-1084A 24R
	NO DRIVER: 500mA
	30minutes warm-up

## CU AND LUMINAIRE BUDGETARY ESTIMATE DIAGRAM

Test:U:17.650V I:0.5000A P:8.8250W PF:1.0000 Freq:49.99Hz Lamp Flux:1124.6x1 lm		
NAME: CTL-MM-1.5-30K-24-RD-AD-OPS-SG	TYPE:	WEIGHT:
SPEC.: 3000K	DIM.:	SERIAL No.: 2408201136
MFR.: MERCURY LIGHTING	SUR.: 0.001589625m2	Shielding Angle:

pcc	80%			70%			50%			30%			10%			0
pw	50%	30%	10%	50%	30%	10%	50%	30%	10%	50%	30%	10%	50%	30%	10%	0
pfc	20%			20%			20%			20%			20%			0
RCR	RCR:Room Cavity Ratio			Coefficients of Utilization(CU)												
0.0	1.02	1.02	1.02	.00	.00	.00	.95	.95	.95	.91	.91	.91	.88	.88	.88	.86
1.0	.97	.95	.93	.95	.93	.92	.91	.90	.89	.88	.87	.86	.85	.85	.84	.82
2.0	.92	.89	.87	.90	.88	.86	.88	.86	.84	.85	.83	.82	.83	.82	.80	.79
3.0	.88	.84	.82	.86	.83	.81	.84	.82	.80	.82	.80	.79	.80	.79	.77	.76
4.0	.84	.80	.78	.83	.80	.77	.81	.78	.76	.80	.77	.75	.78	.76	.75	.74
5.0	.81	.77	.74	.80	.76	.74	.79	.76	.73	.77	.75	.73	.76	.74	.72	.71
6.0	.78	.74	.71	.77	.74	.71	.76	.73	.71	.75	.72	.70	.74	.72	.70	.69
7.0	.75	.71	.69	.75	.71	.69	.74	.71	.68	.73	.70	.68	.72	.70	.68	.67
8.0	.73	.69	.67	.72	.69	.66	.72	.68	.66	.71	.68	.66	.70	.68	.66	.65
9.0	.71	.67	.65	.70	.67	.64	.70	.66	.64	.69	.66	.64	.68	.66	.64	.63
10.0	.69	.65	.63	.68	.65	.63	.68	.65	.62	.67	.64	.62	.67	.64	.62	.61



C Range: 0 - 360DEG

C Interval:For a lens beam angle of 24°

Test Speed: HIGH

Temperature:77.54°F

Operators:zoe

Test Date:2024-8-20

γ Range: 0 - 180DEG

γ Interval: 1.0DEG

Test System:EVERFINE GO-SPEX500\_V1 SYSTEM V2.00.461

Humidity:65.0%

Test Distance:124.409" [K=1.0000]

Remarks: LAMP:BXRH-30G10T0-G-83 Ra:90

LENS:PM-1084A 24R

NO DRIVER:500mA

30minutes warm-up

**WEC AND CCEC**

Test:U:17.650V I:0.5000A P:8.8250W PF:1.0000 Freq:49.99Hz Lamp Flux:1124.6x1 lm		
NAME: CTL-MM-1.5-30K-24-RD-AD-OPS-SG	TYPE:	WEIGHT:
SPEC.: 3000K	DIM.:	SERIAL No.: 2408201136
MFR.: MERCURY LIGHTING	SUR.: 0.001589625m2	Shielding Angle:

pcc	80%			70%			50%			30%			10%			0
pw	50%	30%	10%	50%	30%	10%	50%	30%	10%	50%	30%	10%	50%	30%	10%	0
pfc	20%			20%			20%			20%			20%			0
RCR	RCR:Room Cavity Ratio						Wall Exitance Coefficients(WEC)									
0.0																
1.0	.124	.071	.022	.119	.068	.021	.108	.062	.020	.098	.057	.018	.089	.052	.017	
2.0	.115	.063	.019	.111	.061	.019	.102	.057	.018	.094	.053	.016	.086	.049	.015	
3.0	.107	.057	.017	.103	.055	.017	.096	.052	.016	.089	.049	.015	.083	.046	.014	
4.0	.100	.052	.015	.097	.051	.015	.091	.048	.014	.085	.046	.014	.080	.043	.013	
5.0	.094	.048	.014	.091	.047	.014	.086	.045	.013	.081	.043	.013	.076	.041	.012	
6.0	.089	.045	.013	.086	.044	.013	.082	.042	.012	.078	.040	.012	.074	.039	.011	
7.0	.084	.042	.012	.082	.041	.012	.078	.039	.011	.074	.038	.011	.071	.037	.011	
8.0	.080	.039	.011	.078	.038	.011	.075	.037	.011	.071	.036	.010	.068	.035	.010	
9.0	.076	.037	.010	.075	.036	.010	.072	.035	.010	.069	.034	.010	.066	.033	.010	
10.0	.073	.035	.010	.072	.035	.010	.069	.034	.009	.066	.033	.009	.064	.032	.009	

pcc	80%			70%			50%			30%			10%			0
pw	50%	30%	10%	50%	30%	10%	50%	30%	10%	50%	30%	10%	50%	30%	10%	0
pfc	20%			20%			20%			20%			20%			0
RCR	RCR:Room Cavity Ratio						Ceiling Cavity Exitance Coefficients(CCEC)									
0.0	.163	.163	.163	.140	.140	.140	.095	.095	.095	.055	.055	.055	.018	.018	.018	
1.0	.145	.135	.126	.124	.116	.109	.085	.080	.075	.049	.046	.044	.016	.015	.014	
2.0	.130	.114	.100	.111	.098	.087	.076	.068	.061	.044	.039	.036	.014	.013	.012	
3.0	.117	.097	.081	.100	.084	.071	.069	.058	.049	.040	.034	.029	.013	.011	.010	
4.0	.107	.084	.067	.091	.073	.058	.063	.051	.041	.036	.030	.024	.012	.010	.008	
5.0	.098	.074	.056	.084	.064	.049	.058	.044	.034	.033	.026	.020	.011	.009	.007	
6.0	.090	.065	.047	.077	.056	.041	.053	.039	.029	.031	.023	.017	.010	.008	.006	
7.0	.084	.058	.040	.072	.050	.035	.050	.035	.025	.029	.021	.015	.009	.007	.005	
8.0	.078	.052	.035	.067	.045	.030	.046	.032	.021	.027	.019	.013	.009	.006	.004	
9.0	.073	.048	.030	.063	.041	.026	.044	.029	.019	.025	.017	.011	.008	.006	.004	
10.0	.069	.043	.027	.059	.038	.023	.041	.027	.016	.024	.016	.010	.008	.005	.003	

C Range: 0 - 360DEG

C Interval:For a lens beam angle of 24°

Test Speed: HIGH

Temperature:77.54°F

Operators:zoe

Test Date:2024-8-20

γ Range: 0 - 180DEG

γ Interval: 1.0DEG

Test System:EVERFINE GO-SPEX500\_V1 SYSTEM V2.00.461

Humidity:65.0%

Test Distance:124.409" [K=1.0000]

Remarks: LAMP:BXRH-30G10T0-G-83 Ra:90

LENS:PM-1084A 24R

NO DRIVER:500mA

30minutes warm-up

UGR(Unified Glare Rating) Table

Test:U:17.650V I:0.5000A P:8.8250W PF:1.0000 Freq:49.99Hz Lamp Flux:1124.6x1 lm											
NAME: CTL-MM-1.5-30K-24-RD-AD-OPS-SG					TYPE:			WEIGHT:			
SPEC.: 3000K					DIM.:			SERIAL No.: 2408201136			
MFR.: MERCURY LIGHTING					SUR.: 0.001589625m2			Shielding Angle:			
ceiling/cavity	0.7	0.7	0.5	0.5	0.3	0.7	0.7	0.5	0.5	0.3	
walls	0.5	0.3	0.5	0.3	0.3	0.5	0.3	0.5	0.3	0.3	
working plane	0.2	0.2	0.2	0.2	0.2	0.2	0.2	0.2	0.2	0.2	
Room dimensions		Viewed crosswise					Viewed endwise				
x = 2H y = 2H	13.7	14.4	13.9	14.6	14.7	13.9	14.6	14.1	14.8	14.9	
	3H	14.7	15.3	14.9	15.5	15.7	14.8	15.4	15.0	15.8	
	4H	15.1	15.7	15.3	15.9	16.1	15.1	15.7	15.3	15.9	
	6H	15.3	15.8	15.5	16.1	16.3	15.2	15.8	15.5	16.0	
	8H	15.3	15.8	15.6	16.1	16.3	15.2	15.7	15.4	16.0	
	12H	15.2	15.8	15.5	16.0	16.3	15.1	15.6	15.4	15.9	
4H	2H	14.1	14.7	14.4	14.9	15.1	14.3	14.9	14.5	15.3	
	3H	15.2	15.8	15.6	16.0	16.3	15.3	15.8	15.6	16.1	
	4H	15.7	16.2	16.0	16.5	16.8	15.7	16.1	16.0	16.4	
	6H	15.9	16.4	16.3	16.7	17.0	15.8	16.2	16.2	16.6	
	8H	15.9	16.3	16.3	16.7	17.1	15.8	16.2	16.1	16.5	
	12H	15.9	16.3	16.3	16.6	17.0	15.7	16.1	16.1	16.4	
8H	4H	15.8	16.2	16.2	16.5	16.9	15.7	16.1	16.1	16.8	
	6H	16.0	16.4	16.5	16.8	17.2	15.9	16.2	16.3	16.6	
	8H	16.1	16.4	16.5	16.8	17.2	15.9	16.2	16.3	16.6	
	12H	16.0	16.3	16.5	16.7	17.2	15.8	16.1	16.3	16.5	
12H	4H	15.7	16.1	16.1	16.5	16.9	15.7	16.1	16.1	16.8	
	6H	16.0	16.3	16.5	16.7	17.2	15.9	16.2	16.3	16.6	
	8H	16.0	16.3	16.5	16.7	17.2	15.8	16.1	16.3	16.5	
Variations with the observer position at spacings(CIE Pub.117):											
S = 1.0H	+ 0.5 / - 0.7					+ 0.6 / - 0.7					
1.5H	+ 0.6 / - 0.5					+ 0.7 / - 0.5					
2.0H	+ 1.0 / - 0.7					+ 1.0 / - 0.7					

CIE Pub.117, 1125 lm Total Lamp Luminous Flux Correct (8log(F/F0) = 0.4)  
 Area: 0.00158963 m2

C Range: 0 - 360DEG	γ Range: 0 - 180DEG
C Interval: For a lens beam angle of 24°	γ Interval: 1.0DEG
Test Speed: HIGH	Test System: EVERFINE GO-SPEX500_V1 SYSTEM V2.00.461
Temperature: 77.54°F	Humidity: 65.0%
Operators: zoe	Test Distance: 124.409" [K=1.0000]
Test Date: 2024-8-20	Remarks: LAMP: BXRH-30G10T0-G-83 Ra: 90
	LENS: PM-1084A 24R
	NO DRIVER: 500mA
	30minutes warm-up



## UTILIZATION FACTORS TABLE

Test:U:17.650V I:0.5000A P:8.8250W PF:1.0000 Freq:49.99Hz Lamp Flux:1124.6x1 lm		
NAME: CTL-MM-1.5-30K-24-RD-AD-OPS-SG	TYPE:	WEIGHT:
SPEC.: 3000K	DIM.:	SERIAL No.: 2408201136
MFR.: MERCURY LIGHTING	SUR.: 0.001589625m2	Shielding Angle:

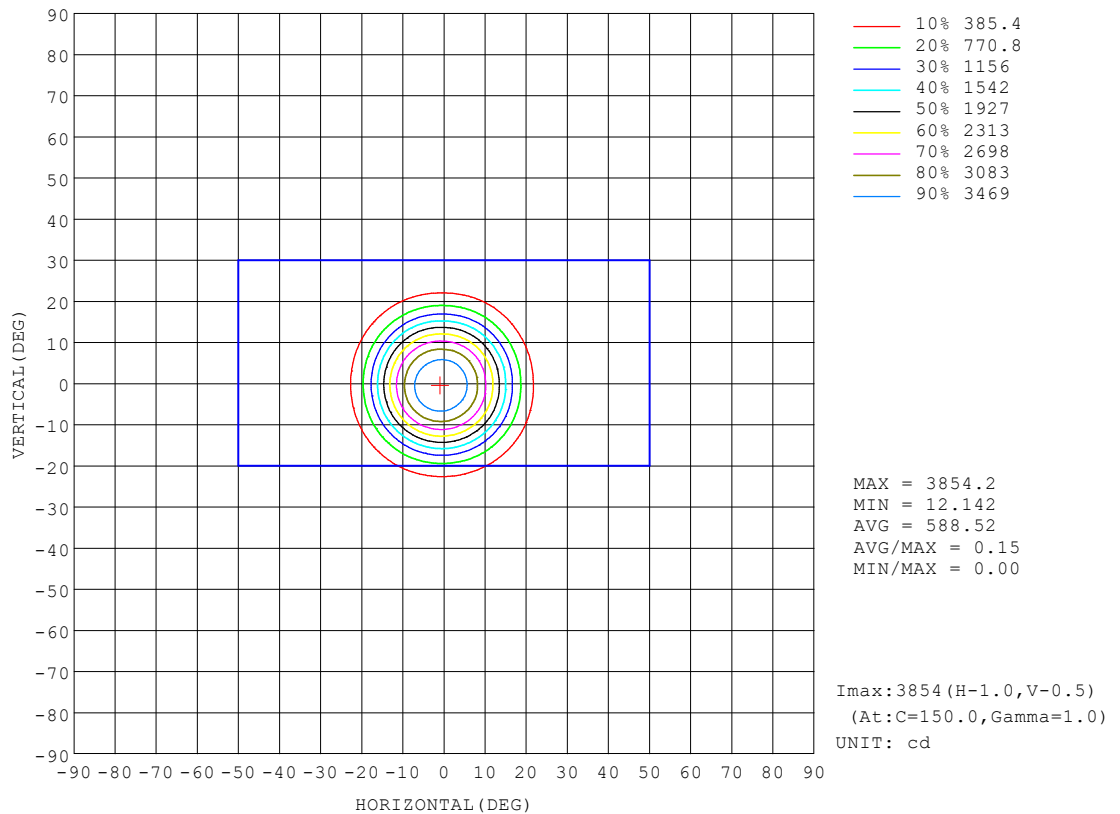
REFLECTANCE										
Ceiling	0.8	0.8	0.8	0.7	0.7	0.7	0.5	0.5	0.5	0
Walls	0.7	0.5	0.3	0.7	0.5	0.3	0.7	0.5	0.3	0
Working plane	0.2	0.2	0.2	0.2	0.2	0.2	0.2	0.2	0.2	0
ROOM INDEX	UTILIZATION FACTORS (PERCENT) $k(RI) \times RCR = 5$									
$k = 0.60$	76	71	68	76	71	68	75	70	68	65
0.80	82	77	74	82	77	74	81	77	74	71
1.00	86	81	78	85	81	78	84	81	77	74
1.25	89	85	82	88	84	82	87	83	81	77
1.50	91	87	85	90	87	84	88	85	83	79
2.00	93	90	87	92	89	87	90	87	85	81
2.50	95	92	89	93	91	88	91	89	87	82
3.00	96	93	91	95	92	90	92	90	88	83
4.00	98	96	94	96	94	92	93	91	90	84
5.00	99	97	96	97	95	94	94	93	91	85
ROOM INDEX	UF(total)									Direct
According to DIN EN 13032-2 2004			Suspended					SHRNOM = 1.25		

C Range: 0 - 360DEG  
 C Interval: For a lens beam angle of 24°  
 Test Speed: HIGH  
 Temperature: 77.54°F  
 Operators: zoe  
 Test Date: 2024-8-20

γ Range: 0 - 180DEG  
 γ Interval: 1.0DEG  
 Test System: EVERFINE GO-SPEX500\_V1 SYSTEM V2.00.461  
 Humidity: 65.0%  
 Test Distance: 124.409" [K=1.0000]  
 Remarks: LAMP: BXRH-30G10T0-G-83 Ra:90  
 LENS: PM-1084A 24R  
 NO DRIVER: 500mA  
 30minutes warm-up

## ISOCANDELA DIAGRAM

Test:U:17.650V I:0.5000A P:8.8250W PF:1.0000 Freq:49.99Hz Lamp Flux:1124.6x1 lm		
NAME: CTL-MM-1.5-30K-24-RD-AD-OPS-SG	TYPE:	WEIGHT:
SPEC.: 3000K	DIM.:	SERIAL No.: 2408201136
MFR.: MERCURY LIGHTING	SUR.: 0.001589625m2	Shielding Angle:



C Range: 0 - 360DEG

C Interval:For a lens beam angle of 24°

Test Speed: HIGH

Temperature:77.54°F

Operators:zoe

Test Date:2024-8-20

γ Range: 0 - 180DEG

γ Interval: 1.0DEG

Test System:EVERFINE GO-SPEX500\_V1 SYSTEM V2.00.461

Humidity:65.0%

Test Distance:124.409" [K=1.0000]

Remarks: LAMP:BXRH-30G10T0-G-83 Ra:90

LENS:PM-1084A 24R

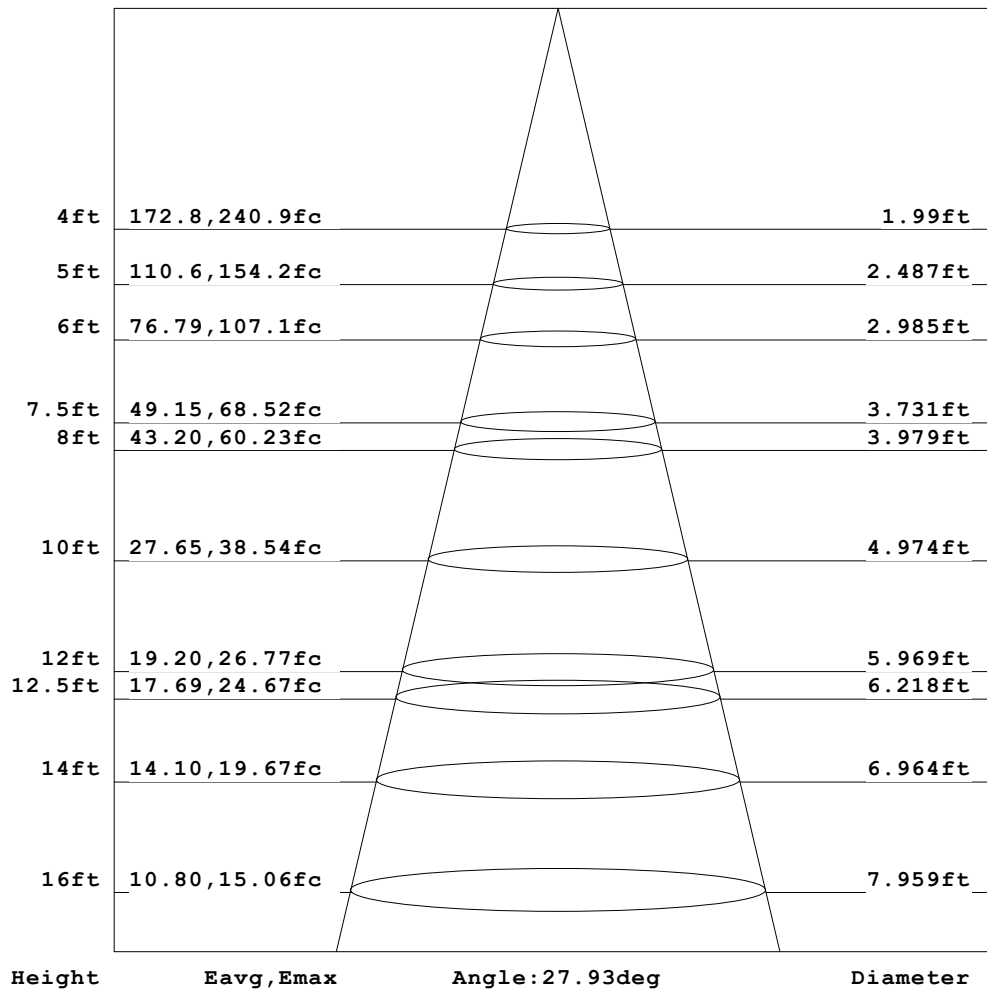
NO DRIVER:500mA

30minutes warm-up

**AAI Figure**

Test:U:17.650V I:0.5000A P:8.8250W PF:1.0000 Freq:49.99Hz Lamp Flux:1124.6x1 lm		
NAME: CTL-MM-1.5-30K-24-RD-AD-OPS-SG	TYPE:	WEIGHT:
SPEC.: 3000K	DIM.:	SERIAL No.: 2408201136
MFR.: MERCURY LIGHTING	SUR.: 0.001589625m2	Shielding Angle:

Flux out:539.9 lm

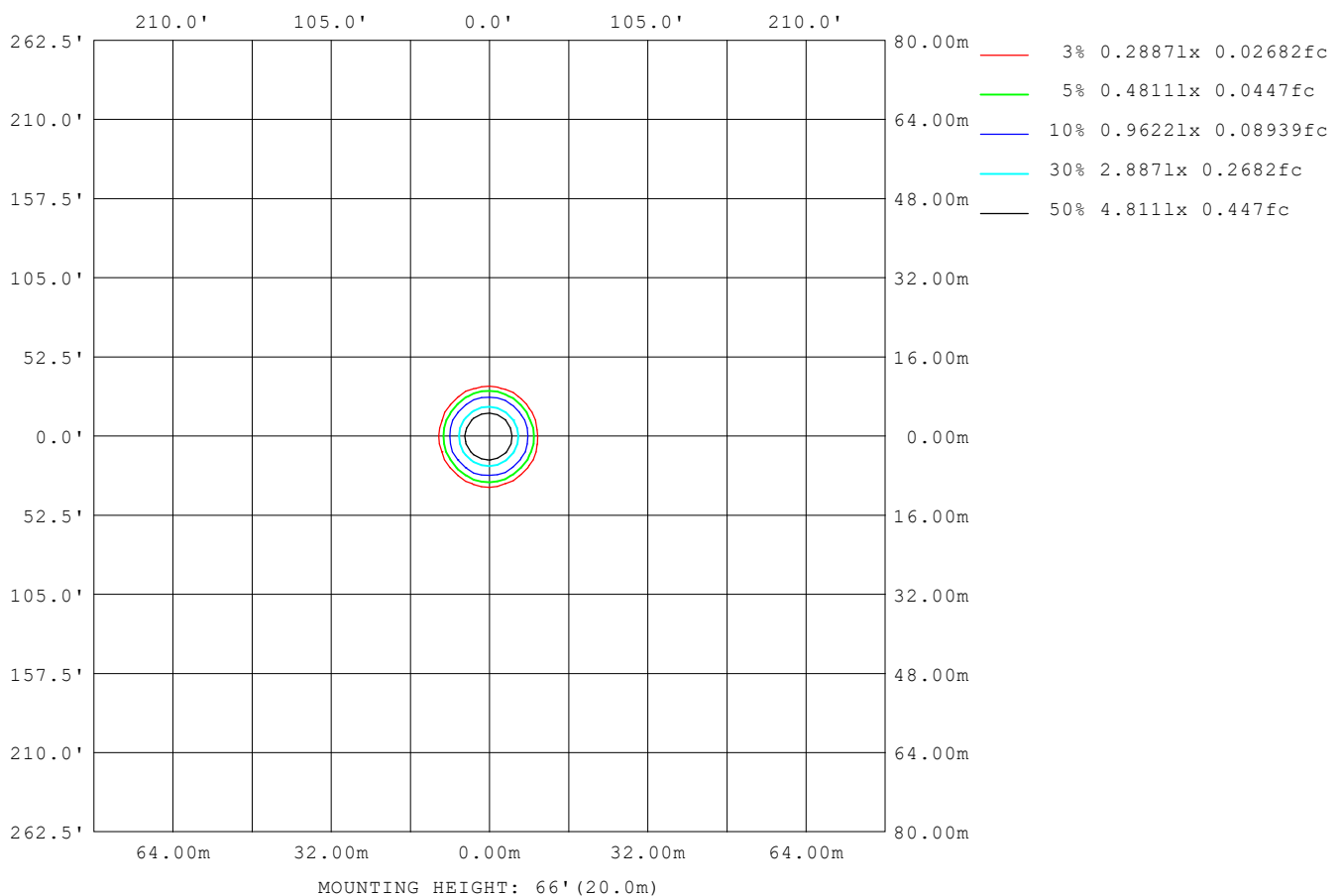


Note: The Curves indicate the illuminated area and the average illumination when the luminaire is at different distance.

C Range: 0 - 360DEG	γ Range: 0 - 180DEG
C Interval: For a lens beam angle of 24°	γ Interval: 1.0DEG
Test Speed: HIGH	Test System: EVERFINE GO-SPEX500_V1 SYSTEM V2.00.461
Temperature: 77.54°F	Humidity: 65.0%
Operators: zoe	Test Distance: 124.409" [K=1.0000]
Test Date: 2024-8-20	Remarks: LAMP: BXRH-30G10T0-G-83 Ra:90
	LENS: PM-1084A 24R
	NO DRIVER: 500mA
	30minutes warm-up

## ISOLUX DIAGRAM

Test:U:17.650V I:0.5000A P:8.8250W PF:1.0000 Freq:49.99Hz Lamp Flux:1124.6x1 lm		
NAME: CTL-MM-1.5-30K-24-RD-AD-OPS-SG	TYPE:	WEIGHT:
SPEC.: 3000K	DIM.:	SERIAL No.: 2408201136
MFR.: MERCURY LIGHTING	SUR.: 0.001589625m2	Shielding Angle:



C Range: 0 - 360DEG	γ Range: 0 - 180DEG
C Interval: For a lens beam angle of 24°	γ Interval: 1.0DEG
Test Speed: HIGH	Test System: EVERFINE GO-SPEX500_V1 SYSTEM V2.00.461
Temperature: 77.54°F	Humidity: 65.0%
Operators: zoe	Test Distance: 124.409" [K=1.0000]
Test Date: 2024-8-20	Remarks: LAMP: BXRH-30G10T0-G-83 Ra: 90
	LENS: PM-1084A 24R
	NO DRIVER: 500mA
	30minutes warm-up

**LED Avg.L Report**

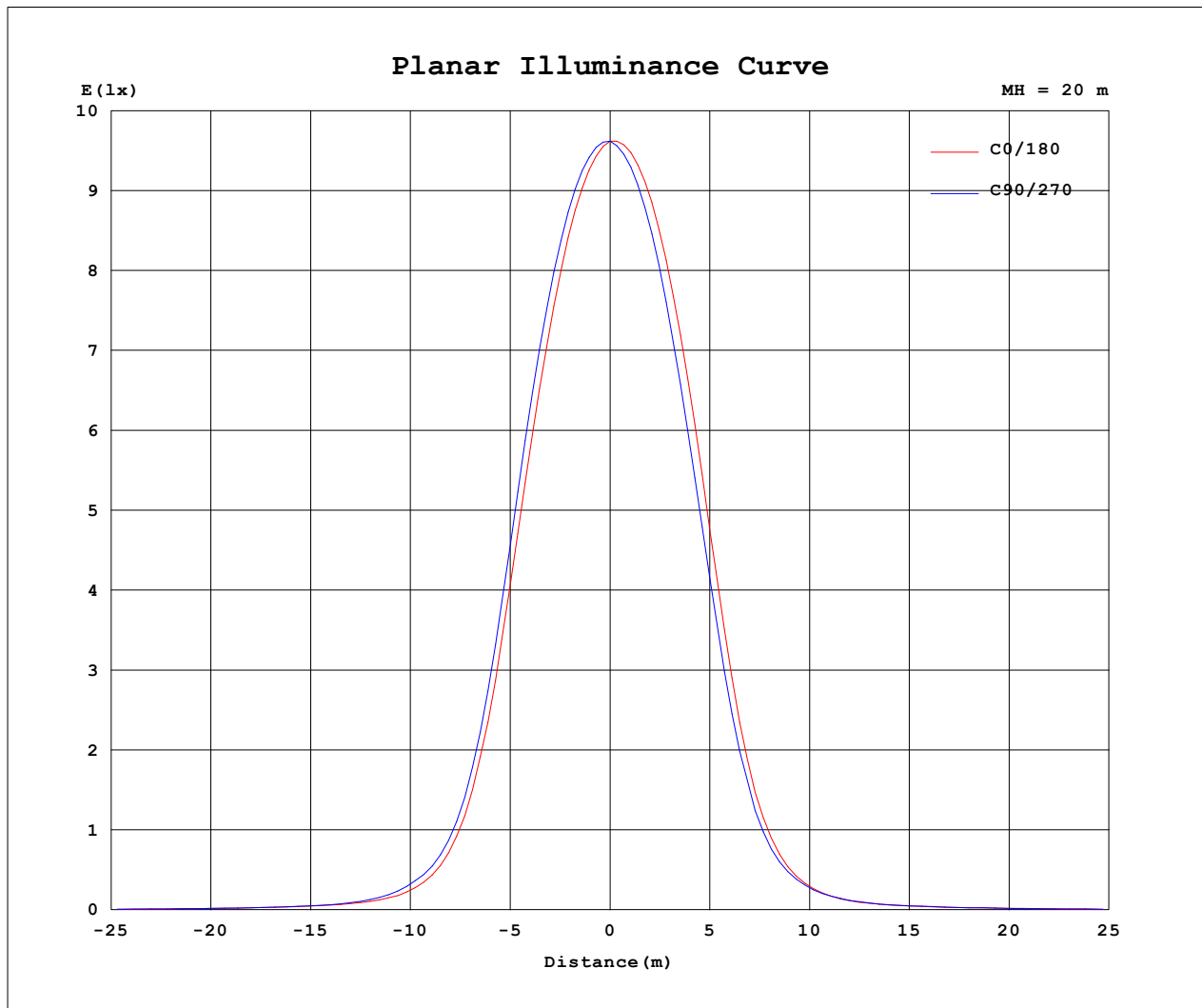
Test:U:17.650V I:0.5000A P:8.8250W PF:1.0000 Freq:49.99Hz Lamp Flux:1124.6x1 lm		
NAME: CTL-MM-1.5-30K-24-RD-AD-OPS-SG	TYPE:	WEIGHT:
SPEC.: 3000K	DIM.:	SERIAL No.: 2408201136
MFR.: MERCURY LIGHTING	SUR.: 0.001589625m2	Shielding Angle:

AvgL	cd/m2
L_0~180 (65) av	12293
L_0~180 (75) av	10368
L_0~180 (85) av	2384
L_90~270 (65) av	11995
L_90~270 (75) av	9980
L_90~270 (85) av	3242
L_45 (65) av	12108
L_45 (75) av	10186
L_45 (85) av	2694

Standard: GB/T 29293-2012

C Range: 0 - 360DEG	γ Range: 0 - 180DEG
C Interval: For a lens beam angle of 24°	γ Interval: 1.0DEG
Test Speed: HIGH	Test System: EVERFINE GO-SPEX500_V1 SYSTEM V2.00.461
Temperature: 77.54°F	Humidity: 65.0%
Operators: zoe	Test Distance: 124.409" [K=1.0000]
Test Date: 2024-8-20	Remarks: LAMP: BXRH-30G10T0-G-83 Ra: 90
	LENS: PM-1084A 24R
	NO DRIVER: 500mA
	30minutes warm-up

### Planar Illuminance Curve



C Range: 0 - 360DEG

C Interval: For a lens beam angle of 24°

Test Speed: HIGH

Temperature: 77.54°F

Operators: zoe

Test Date: 2024-8-20

γ Range: 0 - 180DEG

γ Interval: 1.0DEG

Test System: EVERFINE GO-SPEX500\_V1 SYSTEM V2.00.461

Humidity: 65.0%

Test Distance: 124.409" [K=1.0000]

Remarks: LAMP: BXRH-30G10T0-G-83 Ra: 90

LENS: PM-1084A 24R

NO DRIVER: 500mA

30minutes warm-up

**LUMINOUS DISTRIBUTION INTENSITY DATA**

Test:U:17.650V I:0.5000A P:8.8250W PF:1.0000 Freq:49.99Hz Lamp Flux:1124.6x1 lm		
NAME: CTL-MM-1.5-30K-24-RD-AD-OPS-SG	TYPE:	WEIGHT:
SPEC.: 3000K	DIM.:	SERIAL No.: 2408201136
MFR.: MERCURY LIGHTING	SUR.: 0.001589625m2	Shielding Angle:

Table--1

UNIT: cd

C (DEG) γ (DEG)	0	30	60	90	120	150	180	210	240	270	300	330						
0	3848	3848	3848	3848	3848	3848	3848	3848	3848	3848	3848	3848						
5	3541	3566	3599	3649	3688	3707	3688	3634	3599	3557	3540	3531						
10	2731	2793	2862	2940	3013	3041	3013	2947	2859	2756	2733	2727						
15	1544	1623	1681	1753	1819	1856	1839	1778	1697	1587	1577	1545						
20	569	620	650	681	716	726	710	691	656	600	602	575						
25	188	213	225	238	245	240	229	228	227	208	206	187						
30	77.8	86.1	93.3	97.5	97.1	91.8	86.5	91.9	92.8	90.1	85.0	78.3						
35	45.5	47.7	49.0	49.3	49.4	47.9	47.1	49.6	50.0	48.2	47.1	45.4						
40	32.0	32.7	32.8	33.3	33.7	33.5	33.3	34.4	34.8	33.6	32.9	32.1						
45	23.0	23.3	23.1	23.4	24.0	24.5	24.7	24.9	25.1	24.0	23.5	23.1						
50	17.2	17.3	17.4	17.9	18.5	19.0	19.1	18.8	18.6	18.0	17.7	17.4						
55	12.9	12.7	12.8	13.4	13.9	14.3	14.4	14.0	13.7	13.5	13.2	13.0						
60	9.85	9.71	9.75	10.2	10.6	10.9	11.1	10.8	10.6	10.4	10.1	9.93						
65	7.86	7.77	7.71	7.84	8.09	8.46	8.66	8.56	8.44	8.28	8.12	7.95						
70	6.05	5.77	5.60	5.70	5.97	6.44	6.88	6.91	6.78	6.60	6.43	6.25						
75	3.92	3.58	3.38	3.44	3.68	4.12	4.61	4.90	4.93	4.77	4.61	4.33						
80	1.83	1.50	1.31	1.36	1.56	1.94	2.38	2.70	2.91	2.87	2.62	2.22						
85	0.18	0.09	0.06	0.07	0.07	0.20	0.48	0.72	0.87	0.83	0.63	0.36						
90	0.00	0.00	0.00	0.00	0.00	0.00	0.00	0.00	0.00	0.00	0.00	0.00						
95	0.00	0.00	0.00	0.00	0.00	0.00	0.00	0.00	0.00	0.00	0.00	0.00						
100	0.00	0.00	0.00	0.00	0.00	0.00	0.00	0.00	0.00	0.00	0.00	0.00						
105	0.00	0.00	0.00	0.00	0.00	0.00	0.00	0.00	0.00	0.00	0.00	0.00						
110	0.00	0.00	0.00	0.00	0.00	0.00	0.00	0.00	0.00	0.00	0.00	0.00						
115	0.00	0.00	0.00	0.00	0.00	0.00	0.00	0.00	0.00	0.00	0.00	0.00						
120	0.00	0.00	0.00	0.00	0.00	0.00	0.00	0.00	0.00	0.00	0.00	0.00						
125	0.00	0.00	0.00	0.00	0.00	0.00	0.00	0.00	0.00	0.00	0.00	0.00						
130	0.00	0.00	0.00	0.00	0.00	0.00	0.00	0.00	0.00	0.00	0.00	0.00						
135	0.00	0.00	0.00	0.00	0.00	0.00	0.00	0.00	0.00	0.00	0.00	0.00						
140	0.00	0.00	0.00	0.00	0.00	0.00	0.00	0.00	0.00	0.00	0.00	0.00						
145	0.00	0.00	0.00	0.00	0.00	0.00	0.00	0.00	0.00	0.00	0.00	0.00						
150	0.00	0.00	0.00	0.00	0.00	0.00	0.00	0.00	0.00	0.00	0.00	0.00						
155	0.00	0.00	0.00	0.00	0.00	0.00	0.00	0.00	0.00	0.00	0.00	0.00						
160	0.00	0.00	0.00	0.00	0.00	0.00	0.00	0.00	0.00	0.00	0.00	0.00						
165	0.00	0.00	0.00	0.00	0.00	0.00	0.00	0.00	0.00	0.00	0.00	0.00						
170	0.00	0.00	0.00	0.00	0.00	0.00	0.00	0.00	0.00	0.00	0.00	0.00						
175	0.00	0.00	0.00	0.00	0.00	0.00	0.00	0.00	0.00	0.00	0.00	0.00						
180	0.00	0.00	0.00	0.00	0.00	0.00	0.00	0.00	0.00	0.00	0.00	0.00						

C Range: 0 - 360DEG

C Interval:For a lens beam angle of 24°

Test Speed: HIGH

Temperature:77.54°F

Operators:zoe

Test Date:2024-8-20

γ Range: 0 - 180DEG

γ Interval: 1.0DEG

Test System:EVERFINE GO-SPEX500\_V1 SYSTEM V2.00.461

Humidity:65.0%

Test Distance:124.409" [K=1.0000]

Remarks: LAMP:BXRH-30G10T0-G-83 Ra:90

LENS:PM-1084A 24R

NO DRIVER:500mA

30minutes warm-up