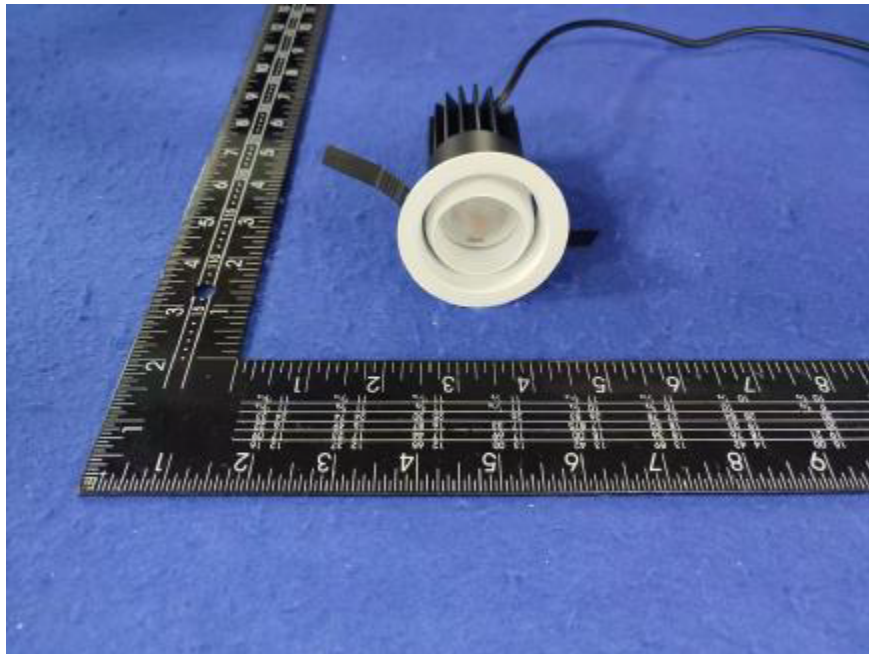


Photometric report for Flanged and Flangeless Trim



Light Output Ratio:	85.1%	
Luminaire Power:	8.826 W	
SHR Nominal:	0.00	Calculated using the TM5
SHR Maximum:	0.30	fine grid method.

C Range: 0 - 360DEG	γ Range: 0 - 180DEG
C Interval: For a lens beam angle of 15°	γ Interval: 1.0DEG
Test Speed: HIGH	Test System: EVERFINE GO-SPEX500_V1 SYSTEM V2.00.461
Temperature: 77.54°F	Humidity: 65.0%
Operators: zoe	Test Distance: 124.409" [K=1.0000]
Test Date: 2024-8-20	Remarks: LAMP: BXRH-30G10T0-G-83 Ra: 90
	LENS: PM-1084 15R
	NO DRIVER: 500mA
	30minutes warm-up

LUMINOUS INTENSITY DISTRIBUTION DIAGRAM

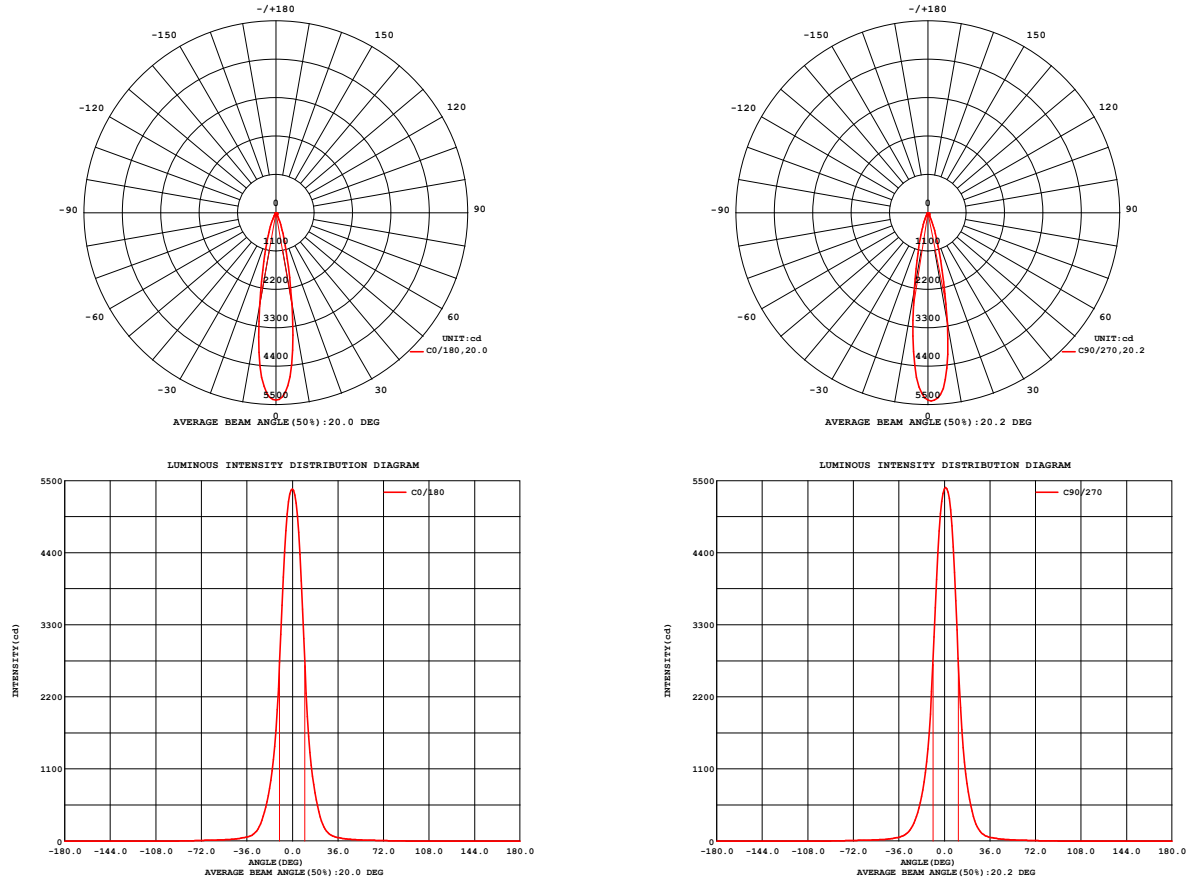


Fig. C0/C180

Fig. C90/C270

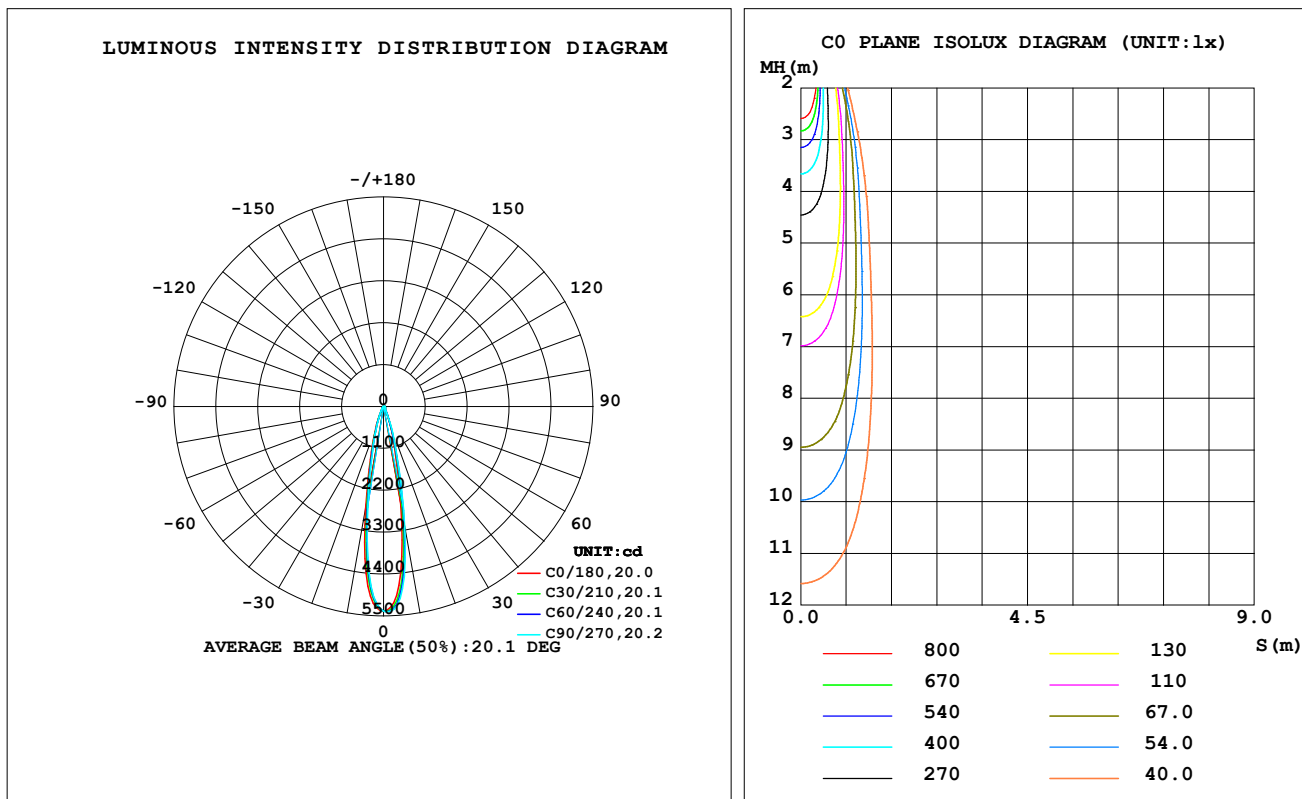
C Range: 0 - 360DEG
C Interval: For a lens beam angle of 15°
Test Speed: HIGH
Temperature: 77.54°F
Operators: zoe
Test Date: 2024-8-20

γ Range: 0 - 180DEG
γ Interval: 1.0DEG
Test System: EVERFINE GO-SPEX500_V1 SYSTEM V2.00.461
Humidity: 65.0%
Test Distance: 124.409" [K=1.0000]
Remarks: LAMP: BXRH-30G10T0-G-83 Ra: 90
LENS: PM-1084 15R
NO DRIVER: 500mA
30minutes warm-up

LUMINAIRE PHOTOMETRIC TEST REPORT

Test:U:17.653V I:0.5000A P:8.8265W PF:1.0000 Freq:49.99Hz Lamp Flux:1124.6x1 lm		
NAME: CTL-MM-1.5-30K-15-RD-AD-OPS-SG	TYPE:	WEIGHT:
SPEC.: 3000K	DIM.:	SERIAL No.: 2408201135
MFR.: MERCURY LIGHTING	SUR.: 0.001589625m ²	Shielding Angle:

DATA OF LAMP		PHOTOMETRIC DATA Eff: 108.38 lm/W			
MODEL	Brideglux	I _{max} (cd)	5395	S/MH (C0/180)	0.35
NOMINAL POWER (W)	9	LOR (%)	85.1	S/MH (C90/270)	0.31
RATED VOLTAGE (V)	18	TOTAL FLUX (lm)	956.64	η UP, DN (C0-180)	0.0, 45.1
NOMINAL FLUX (lm)	1124.6	CIE CLASS	DIRECT	η UP, DN (C180-360)	0.0, 40.0
LAMPS INSIDE	1	η up (%)	0.0	CIBSE SHR NOM	0.00
TEST VOLTAGE (V)	18	η down (%)	85.1	CIBSE SHR MAX	0.30



C Range: 0 - 360DEG

C Interval: For a lens beam angle of 15°

Test Speed: HIGH

Temperature: 77.54°F

Operators: zoe

Test Date: 2024-8-20

γ Range: 0 - 180DEG

γ Interval: 1.0DEG

Test System: EVERFINE GO-SPEX500_V1 SYSTEM V2.00.461

Humidity: 65.0%

Test Distance: 124.409" [K=1.0000]

Remarks: LAMP: BXRH-30G10T0-G-83 Ra: 90

LENS: PM-1084 15R

NO DRIVER: 500mA

30minutes warm-up

ZONAL FLUX DIAGRAM

ZONAL FLUX DIAGRAM:

γ	C0	C45	C90	C135	C180	C225	C270	C315	γ	Φ zone	Φ total	%lum,lamp
10	2655	3029	3220	3053	2722	2417	2283	2393	0- 10	383.5	383.5	40.1,34.1
20	533.1	590.4	638.7	640.0	598.4	541.8	503.8	510.6	10- 20	355.6	739.1	77.3,65.7
30	96.03	103.4	112.3	114.7	113.4	113.6	108.0	101.5	20- 30	121.3	860.4	89.9,76.5
40	38.56	39.81	42.46	44.37	45.50	44.13	41.80	39.90	30- 40	41.20	901.6	94.2,80.2
50	19.95	20.08	21.17	22.34	22.95	22.14	21.12	20.40	40- 50	22.53	924.1	96.6,82.2
60	11.96	11.87	12.50	13.42	14.28	13.85	13.24	12.44	50- 60	14.84	939.0	98.2,83.5
70	7.755	7.350	7.555	8.470	9.568	9.561	9.083	8.382	60- 70	10.51	949.5	99.3,84.4
80	2.452	1.998	2.049	2.673	3.641	4.200	4.107	3.311	70- 80	6.159	955.6	99.9,85
90	0	0	0	0	0	0	0	0	80- 90	1.012	956.6	100,85.1
100	0	0	0	0	0	0	0	0	90-100	0	956.6	100,85.1
110	0	0	0	0	0	0	0	0	100-110	0	956.6	100,85.1
120	0	0	0	0	0	0	0	0	110-120	0	956.6	100,85.1
130	0	0	0	0	0	0	0	0	120-130	0	956.6	100,85.1
140	0	0	0	0	0	0	0	0	130-140	0	956.6	100,85.1
150	0	0	0	0	0	0	0	0	140-150	0	956.6	100,85.1
160	0	0	0	0	0	0	0	0	150-160	0	956.6	100,85.1
170	0	0	0	0	0	0	0	0	160-170	0	956.6	100,85.1
180	0	0	0	0	0	0	0	0	170-180	0	956.6	100,85.1
DEG	LUMINOUS INTENSITY:cd									UNIT:lm		

C Range: 0 - 360DEG

C Interval:For a lens beam angle of 15°

Test Speed: HIGH

Temperature:77.54°F

Operators:zoe

Test Date:2024-8-20

 γ Range: 0 - 180DEG

 γ Interval: 1.0DEG

Test System:EVERFINE GO-SPEX500_V1 SYSTEM V2.00.461

Humidity:65.0%

Test Distance:124.409" [K=1.0000]

Remarks: LAMP:BXRH-30G10T0-G-83 Ra:90

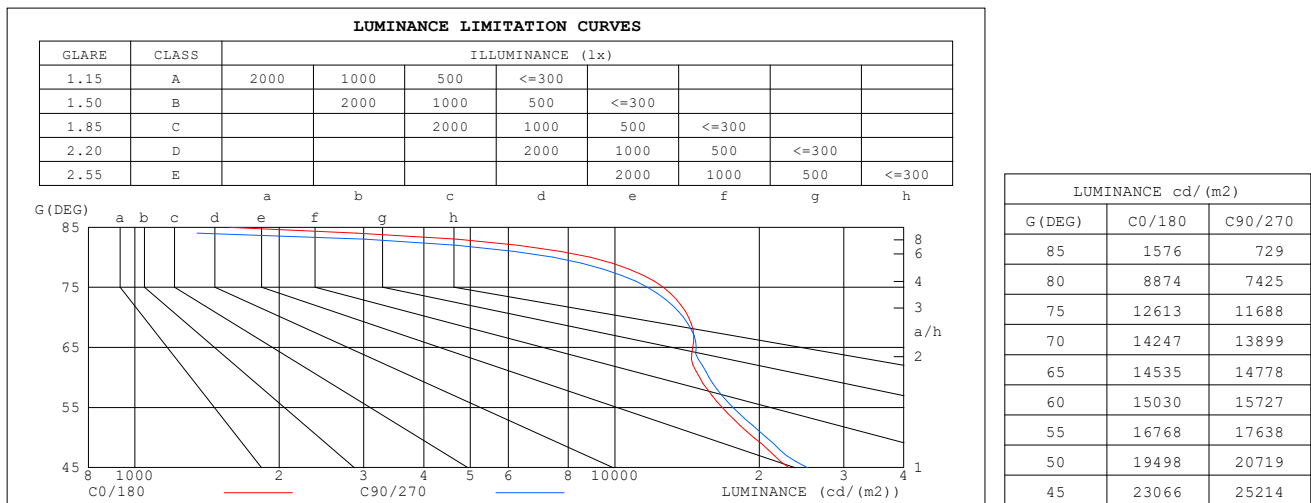
LENS:PM-1084 15R

NO DRIVER:500mA

30minutes warm-up

LUMINANCE LIMITATION CURVES

Test:U:17.653V I:0.5000A P:8.8265W PF:1.0000 Freq:49.99Hz Lamp Flux:1124.6x1 lm		
NAME: CTL-MM-1.5-30K-15-RD-AD-OPS-SG	TYPE:	WEIGHT:
SPEC.: 3000K	DIM.:	SERIAL No.: 2408201135
MFR.: MERCURY LIGHTING	SUR.: 0.001589625m2	Shielding Angle:

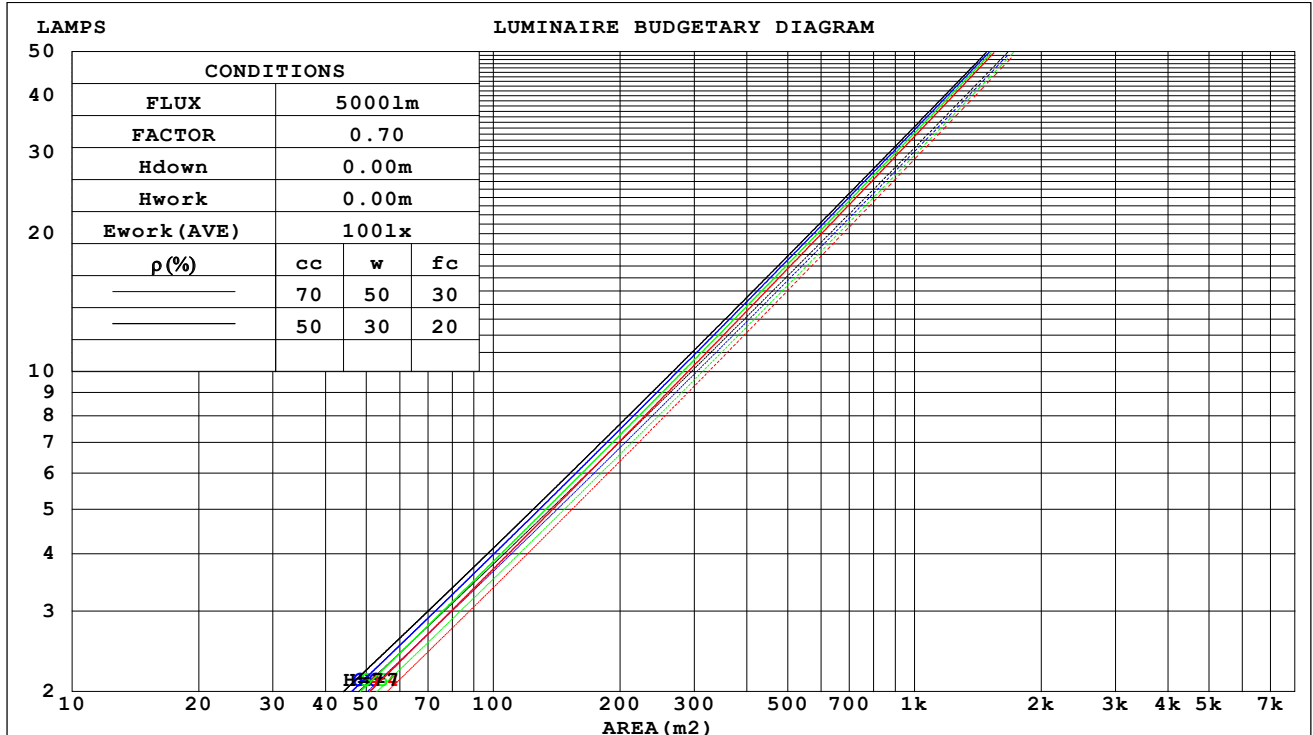


C Range: 0 - 360DEG	γ Range: 0 - 180DEG
C Interval: For a lens beam angle of 15°	γ Interval: 1.0DEG
Test Speed: HIGH	Test System: EVERFINE GO-SPEX500_V1 SYSTEM V2.00.461
Temperature: 77.54°F	Humidity: 65.0%
Operators: zoe	Test Distance: 124.409" [K=1.0000]
Test Date: 2024-8-20	Remarks: LAMP: BXRH-30G10T0-G-83 Ra: 90
	LENS: PM-1084 15R
	NO DRIVER: 500mA
	30minutes warm-up

CU AND LUMINAIRE BUDGETARY ESTIMATE DIAGRAM

Test:U:17.653V I:0.5000A P:8.8265W PF:1.0000 Freq:49.99Hz Lamp Flux:1124.6x1 lm		
NAME: CTL-MM-1.5-30K-15-RD-AD-OPS-SG	TYPE:	WEIGHT:
SPEC.: 3000K	DIM.:	SERIAL No.: 2408201135
MFR.: MERCURY LIGHTING	SUR.: 0.001589625m2	Shielding Angle:

pcc	80%			70%			50%			30%			10%			0
pw	50%	30%	10%	50%	30%	10%	50%	30%	10%	50%	30%	10%	50%	30%	10%	0
pfc	20%			20%			20%			20%			20%			0
RCR	RCR:Room Cavity Ratio															



C Range: 0 - 360DEG

C Interval: For a lens beam angle of 15°

Test Speed: HIGH

Temperature: 77.54°F

Operators: zoe

Test Date: 2024-8-20

γ Range: 0 - 180DEG

γ Interval: 1.0DEG

Test System: EVERFINE GO-SPEX500_V1 SYSTEM V2.00.461

Humidity: 65.0%

Test Distance: 124.409" [K=1.0000]

Remarks: LAMP: BXRH-30G10T0-G-83 Ra: 90

LENS: PM-1084 15R

NO DRIVER: 500mA

30minutes warm-up

WEC AND CCEC

Test:U:17.653V I:0.5000A P:8.8265W PF:1.0000 Freq:49.99Hz Lamp Flux:1124.6x1 lm		
NAME: CTL-MM-1.5-30K-15-RD-AD-OPS-SG	TYPE:	WEIGHT:
SPEC.: 3000K	DIM.:	SERIAL No.: 2408201135
MFR.: MERCURY LIGHTING	SUR.: 0.001589625m2	Shielding Angle:

pcc	80%			70%			50%			30%			10%			0
pw	50%	30%	10%	50%	30%	10%	50%	30%	10%	50%	30%	10%	50%	30%	10%	0
pfc	20%			20%			20%			20%			20%			0
RCR	RCR:Room Cavity Ratio						Wall Exitance Coefficients(WEC)									
0.0																
1.0	.124	.070	.022	.118	.067	.021	.107	.062	.020	.098	.056	.018	.089	.051	.017	
2.0	.115	.063	.019	.110	.061	.019	.101	.056	.017	.093	.052	.016	.086	.048	.015	
3.0	.106	.057	.017	.102	.055	.017	.095	.052	.016	.088	.048	.015	.082	.045	.014	
4.0	.099	.052	.015	.096	.050	.015	.090	.048	.014	.084	.045	.014	.079	.043	.013	
5.0	.093	.047	.014	.090	.046	.013	.085	.044	.013	.080	.042	.013	.075	.040	.012	
6.0	.087	.044	.013	.085	.043	.012	.080	.041	.012	.076	.040	.012	.072	.038	.011	
7.0	.083	.041	.012	.080	.040	.011	.077	.039	.011	.073	.037	.011	.069	.036	.011	
8.0	.078	.038	.011	.076	.038	.011	.073	.036	.010	.070	.035	.010	.067	.034	.010	
9.0	.074	.036	.010	.073	.035	.010	.070	.034	.010	.067	.034	.010	.064	.033	.009	
10.0	.071	.034	.009	.070	.034	.009	.067	.033	.009	.064	.032	.009	.062	.031	.009	

pcc	80%			70%			50%			30%			10%			0	
pw	50%	30%	10%	50%	30%	10%	50%	30%	10%	50%	30%	10%	50%	30%	10%	0	
pfc	20%			20%			20%			20%			20%			0	
RCR	RCR:Room Cavity Ratio						Ceiling Cavity Exitance Coefficients(CCEC)										
0.0	.162	.162	.162	.138	.138	.138	.095	.095	.095	.054	.054	.054	.017	.017	.017		
1.0	.144	.134	.125	.123	.115	.108	.084	.079	.075	.048	.046	.043	.016	.015	.014		
2.0	.129	.113	.100	.110	.097	.086	.076	.067	.060	.044	.039	.035	.014	.013	.011		
3.0	.116	.096	.081	.100	.083	.070	.068	.058	.049	.039	.034	.029	.013	.011	.009		
4.0	.106	.083	.066	.091	.072	.058	.062	.050	.041	.036	.029	.024	.012	.010	.008		
5.0	.097	.073	.055	.083	.063	.048	.057	.044	.034	.033	.026	.020	.011	.008	.007		
6.0	.089	.064	.047	.077	.056	.041	.053	.039	.029	.031	.023	.017	.010	.008	.006		
7.0	.082	.058	.040	.071	.050	.035	.049	.035	.025	.028	.021	.015	.009	.007	.005		
8.0	.077	.052	.035	.066	.045	.030	.046	.032	.021	.027	.019	.013	.009	.006	.004		
9.0	.072	.047	.030	.062	.041	.026	.043	.029	.019	.025	.017	.011	.008	.006	.004		
10.0	.068	.043	.026	.058	.037	.023	.040	.026	.016	.024	.015	.010	.008	.005	.003		

C Range: 0 - 360DEG

C Interval:For a lens beam angle of 15°

Test Speed: HIGH

Temperature:77.54°F

Operators:zoe

Test Date:2024-8-20

γ Range: 0 - 180DEG

γ Interval: 1.0DEG

Test System:EVERFINE GO-SPEX500_V1 SYSTEM V2.00.461

Humidity:65.0%

Test Distance:124.409" [K=1.0000]

Remarks: LAMP:BXRH-30G10T0-G-83 Ra:90

LENS:PM-1084 15R

NO DRIVER:500mA

30minutes warm-up

UGR(Unified Glare Rating) Table

Test:U:17.653V I:0.5000A P:8.8265W PF:1.0000 Freq:49.99Hz Lamp Flux:1124.6x1 lm											
NAME: CTL-MM-1.5-30K-15-RD-AD-OPS-SG					TYPE:			WEIGHT:			
SPEC.: 3000K					DIM.:			SERIAL No.: 2408201135			
MFR.: MERCURY LIGHTING					SUR.: 0.001589625m2			Shielding Angle:			
ceiling/cavity	0.7	0.7	0.5	0.5	0.3	0.7	0.7	0.5	0.5	0.3	
walls	0.5	0.3	0.5	0.3	0.3	0.5	0.3	0.5	0.3	0.3	
working plane	0.2	0.2	0.2	0.2	0.2	0.2	0.2	0.2	0.2	0.2	
Room dimensions		Viewed crosswise					Viewed endwise				
x = 2H y = 2H	15.0	15.7	15.2	15.8	16.0	15.3	16.0	15.5	16.1	16.3	
	3H	16.1	16.7	16.3	16.9	17.1	16.3	16.9	16.5	17.1	
	4H	16.5	17.1	16.8	17.3	17.6	16.6	17.2	16.9	17.5	
	6H	16.8	17.3	17.0	17.6	17.8	16.8	17.4	17.1	17.6	
	8H	16.8	17.3	17.1	17.6	17.8	16.8	17.3	17.1	17.6	
	12H	16.7	17.3	17.0	17.5	17.8	16.7	17.3	17.1	17.5	
4H	2H	15.4	16.0	15.7	16.2	16.4	15.6	16.2	15.9	16.4	
	3H	16.7	17.2	17.0	17.5	17.7	16.8	17.3	17.1	17.6	
	4H	17.2	17.7	17.6	18.0	18.3	17.3	17.8	17.6	18.1	
	6H	17.5	17.9	17.9	18.3	18.6	17.5	17.9	17.8	18.2	
	8H	17.5	17.9	17.9	18.3	18.6	17.5	17.9	17.9	18.2	
	12H	17.5	17.9	17.9	18.2	18.6	17.4	17.8	17.8	18.2	
8H	4H	17.3	17.7	17.7	18.1	18.5	17.4	17.8	17.8	18.1	
	6H	17.7	18.0	18.1	18.4	18.8	17.6	18.0	18.1	18.4	
	8H	17.7	18.0	18.1	18.4	18.9	17.6	17.9	18.1	18.3	
	12H	17.6	17.9	18.1	18.3	18.8	17.6	17.8	18.0	18.3	
12H	4H	17.3	17.7	17.7	18.0	18.4	17.3	17.7	17.8	18.1	
	6H	17.6	17.9	18.1	18.4	18.8	17.6	17.9	18.0	18.3	
	8H	17.7	17.9	18.1	18.4	18.8	17.6	17.9	18.1	18.3	
Variations with the observer position at spacings(CIE Pub.117):											
S = 1.0H	+ 0.5 / - 0.6					+ 0.5 / - 0.7					
1.5H	+ 0.7 / - 0.5					+ 0.9 / - 0.5					
2.0H	+ 0.7 / - 0.5					+ 0.9 / - 0.6					

CIE Pub.117, 1125 lm Total Lamp Luminous Flux Correct (8log(F/F0) = 0.4)
 Area: 0.00158963 m2

C Range: 0 - 360DEG	γ Range: 0 - 180DEG
C Interval: For a lens beam angle of 15°	γ Interval: 1.0DEG
Test Speed: HIGH	Test System: EVERFINE GO-SPEX500_V1 SYSTEM V2.00.461
Temperature: 77.54°F	Humidity: 65.0%
Operators: zoe	Test Distance: 124.409" [K=1.0000]
Test Date: 2024-8-20	Remarks: LAMP: BXRH-30G10T0-G-83 Ra: 90
	LENS: PM-1084 15R
	NO DRIVER: 500mA
	30minutes warm-up

UTILIZATION FACTORS TABLE

Test:U:17.653V I:0.5000A P:8.8265W PF:1.0000 Freq:49.99Hz Lamp Flux:1124.6x1 lm		
NAME: CTL-MM-1.5-30K-15-RD-AD-OPS-SG	TYPE:	WEIGHT:
SPEC.: 3000K	DIM.:	SERIAL No.: 2408201135
MFR.: MERCURY LIGHTING	SUR.: 0.001589625m2	Shielding Angle:

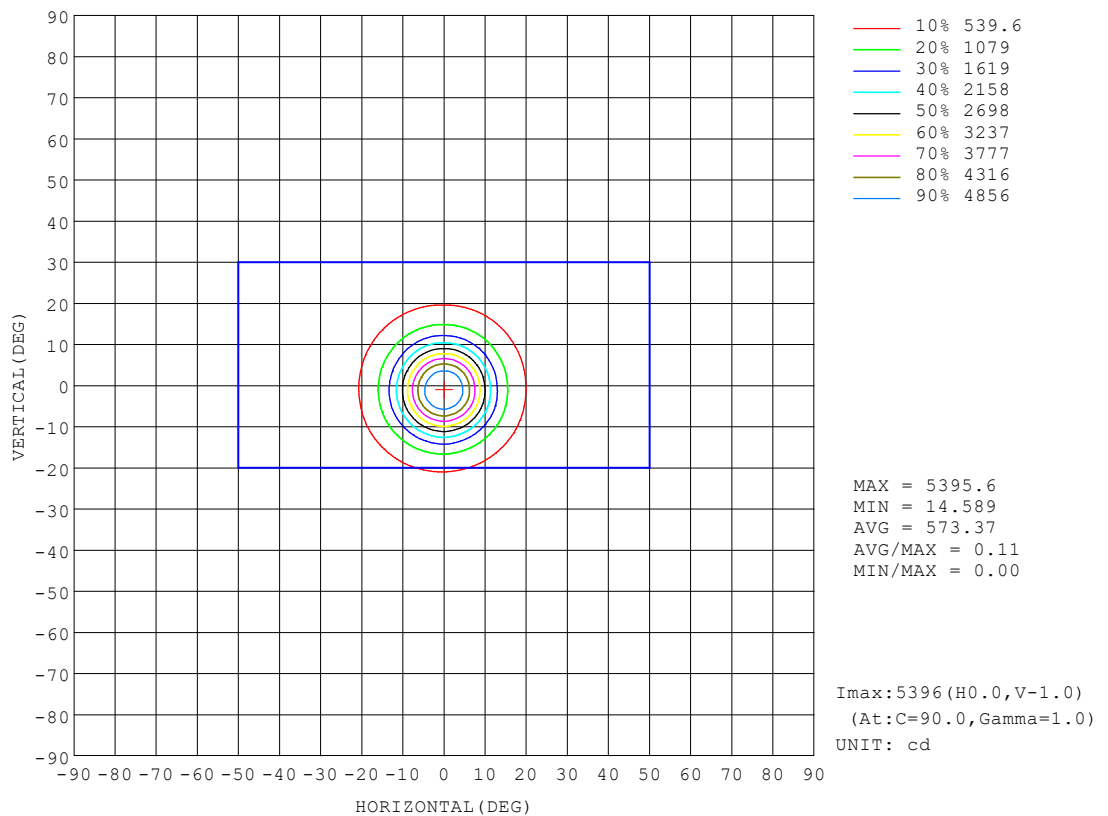
REFLECTANCE										
Ceiling	0.8	0.8	0.8	0.7	0.7	0.7	0.5	0.5	0.5	0
Walls	0.7	0.5	0.3	0.7	0.5	0.3	0.7	0.5	0.3	0
Working plane	0.2	0.2	0.2	0.2	0.2	0.2	0.2	0.2	0.2	0
ROOM INDEX	UTILIZATION FACTORS (PERCENT) $k(RI) \times RCR = 5$									
$k = 0.60$	75	70	66	74	69	66	74	69	66	63
0.80	81	76	73	80	76	73	79	75	73	70
1.00	85	80	77	84	80	77	83	79	76	73
1.25	88	83	81	87	83	80	85	82	80	76
1.50	90	86	83	89	85	83	87	84	82	78
2.00	92	89	86	91	88	85	89	86	84	80
2.50	94	91	88	92	89	87	90	87	86	81
3.00	95	92	90	94	91	89	91	89	87	82
4.00	97	94	93	95	93	91	92	90	89	83
5.00	98	96	94	96	94	93	93	92	90	84
ROOM INDEX	UF (total)									Direct
According to DIN EN 13032-2 2004			Suspended					SHRNOM = 1.25		

C Range: 0 - 360DEG
 C Interval: For a lens beam angle of 15°
 Test Speed: HIGH
 Temperature: 77.54°F
 Operators: zoe
 Test Date: 2024-8-20

γ Range: 0 - 180DEG
 γ Interval: 1.0DEG
 Test System: EVERFINE GO-SPEX500_V1 SYSTEM V2.00.461
 Humidity: 65.0%
 Test Distance: 124.409" [K=1.0000]
 Remarks: LAMP: BXRH-30G10T0-G-83 Ra:90
 LENS: PM-1084 15R
 NO DRIVER: 500mA
 30minutes warm-up

ISOCANDELA DIAGRAM

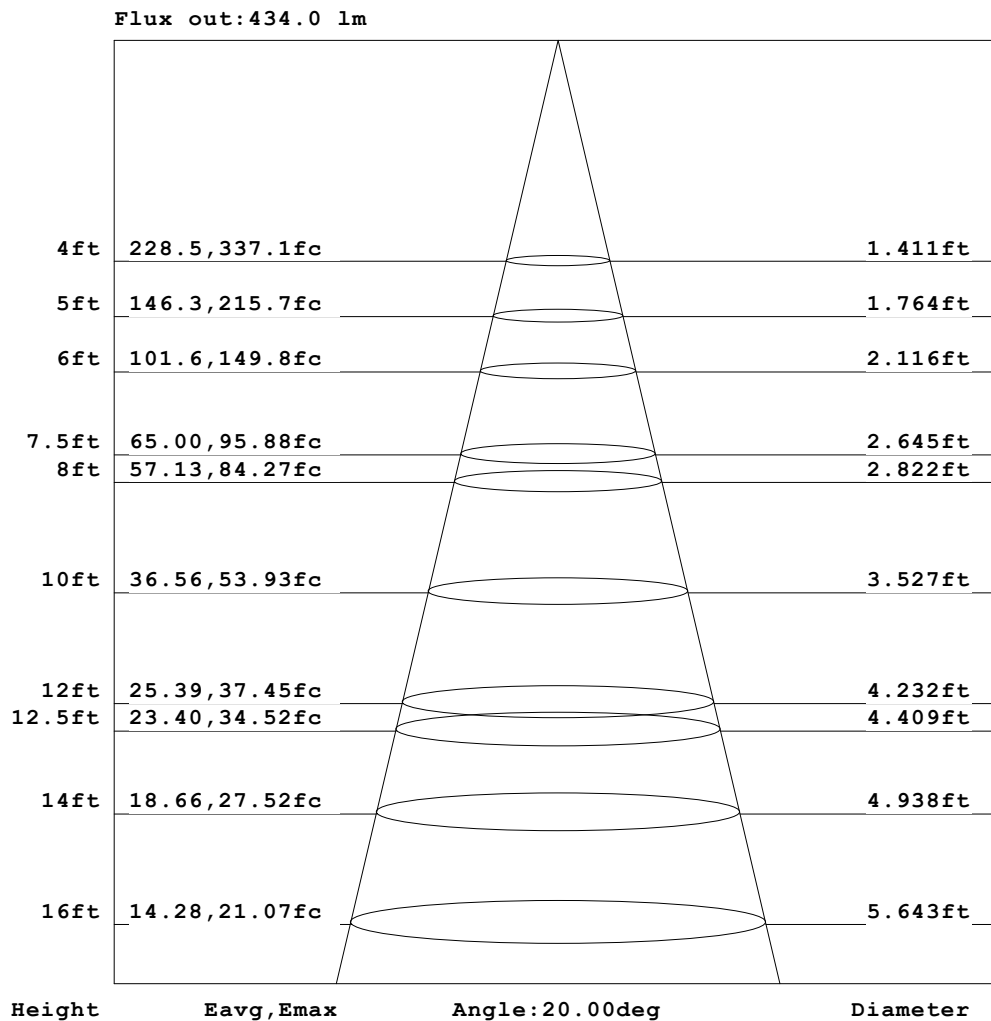
Test:U:17.653V I:0.5000A P:8.8265W PF:1.0000 Freq:49.99Hz Lamp Flux:1124.6x1 lm		
NAME: CTL-MM-1.5-30K-15-RD-AD-OPS-SG	TYPE:	WEIGHT:
SPEC.: 3000K	DIM.:	SERIAL No.: 2408201135
MFR.: MERCURY LIGHTING	SUR.: 0.001589625m2	Shielding Angle:



C Range: 0 - 360DEG	γ Range: 0 - 180DEG
C Interval:For a lens beam angle of 15°	γ Interval: 1.0DEG
Test Speed: HIGH	Test System:EVERFINE GO-SPEX500_V1 SYSTEM V2.00.461
Temperature:77.54°F	Humidity:65.0%
Operators:zoe	Test Distance:124.409" [K=1.0000]
Test Date:2024-8-20	Remarks: LAMP:BXRH-30G10T0-G-83 Ra:90
	LENS:PM-1084 15R
	NO DRIVER:500mA
	30minutes warm-up

AAI Figure

Test:U:17.653V I:0.5000A P:8.8265W PF:1.0000 Freq:49.99Hz Lamp Flux:1124.6x1 lm		
NAME: CTL-MM-1.5-30K-15-RD-AD-OPS-SG	TYPE:	WEIGHT:
SPEC.: 3000K	DIM.:	SERIAL No.: 2408201135
MFR.: MERCURY LIGHTING	SUR.: 0.001589625m2	Shielding Angle:

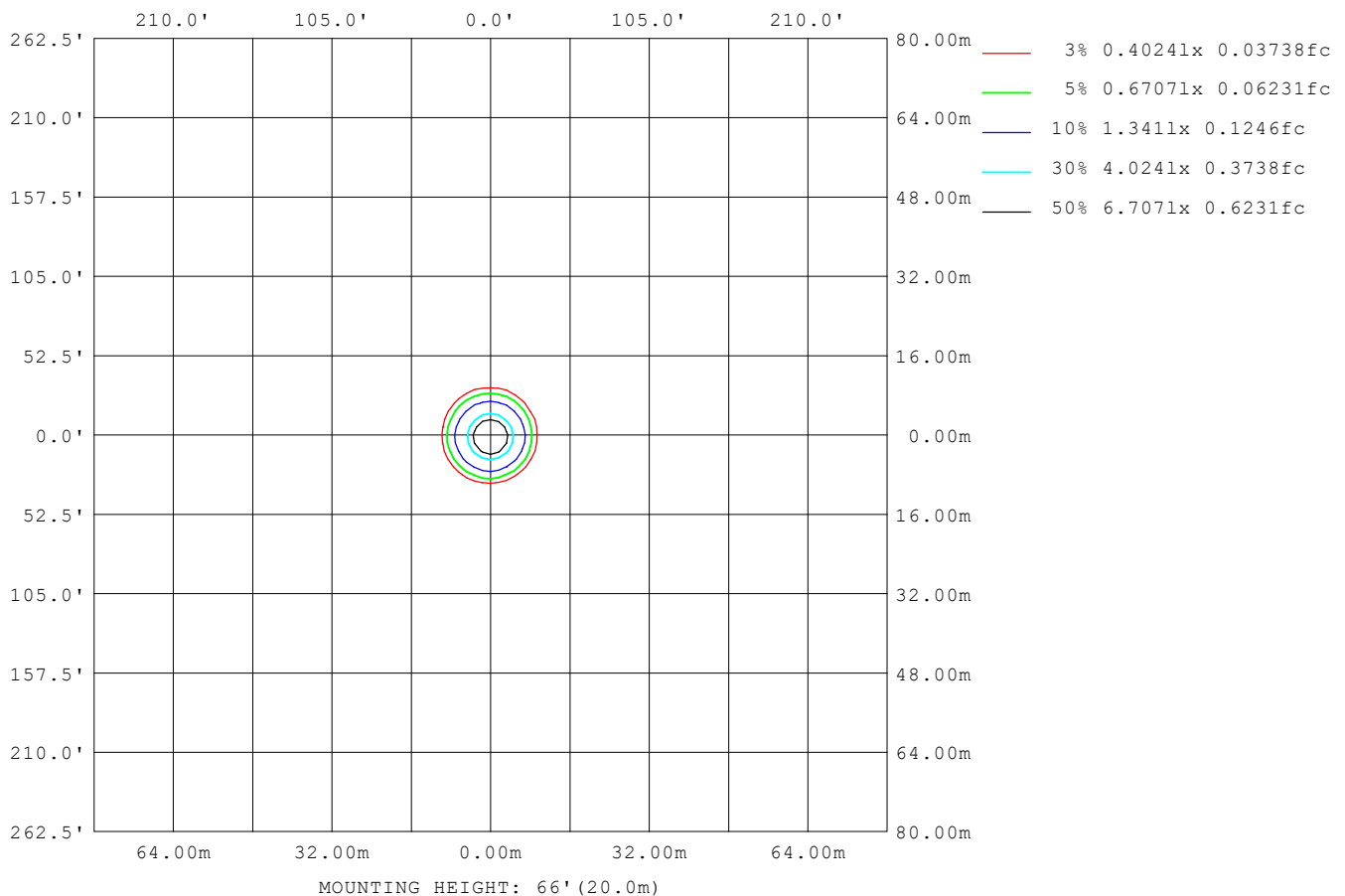


Note: The Curves indicate the illuminated area and the average illumination when the luminaire is at different distance.

C Range: 0 - 360DEG	γ Range: 0 - 180DEG
C Interval: For a lens beam angle of 15°	γ Interval: 1.0DEG
Test Speed: HIGH	Test System: EVERFINE GO-SPEX500_V1 SYSTEM V2.00.461
Temperature: 77.54°F	Humidity: 65.0%
Operators: zoe	Test Distance: 124.409" [K=1.0000]
Test Date: 2024-8-20	Remarks: LAMP: BXRH-30G10T0-G-83 Ra: 90
	LENS: PM-1084 15R
	NO DRIVER: 500mA
	30minutes warm-up

ISOLUX DIAGRAM

Test:U:17.653V I:0.5000A P:8.8265W PF:1.0000 Freq:49.99Hz Lamp Flux:1124.6x1 lm		
NAME: CTL-MM-1.5-30K-15-RD-AD-OPS-SG	TYPE:	WEIGHT:
SPEC.: 3000K	DIM.:	SERIAL No.: 2408201135
MFR.: MERCURY LIGHTING	SUR.: 0.001589625m2	Shielding Angle:



C Range: 0 - 360DEG	γ Range: 0 - 180DEG
C Interval: For a lens beam angle of 15°	γ Interval: 1.0DEG
Test Speed: HIGH	Test System: EVERFINE GO-SPEX500_V1 SYSTEM V2.00.461
Temperature: 77.54°F	Humidity: 65.0%
Operators: zoe	Test Distance: 124.409" [K=1.0000]
Test Date: 2024-8-20	Remarks: LAMP: BXRH-30G10T0-G-83 Ra: 90
	LENS: PM-1084 15R
	NO DRIVER: 500mA
	30minutes warm-up

LED Avg.L Report

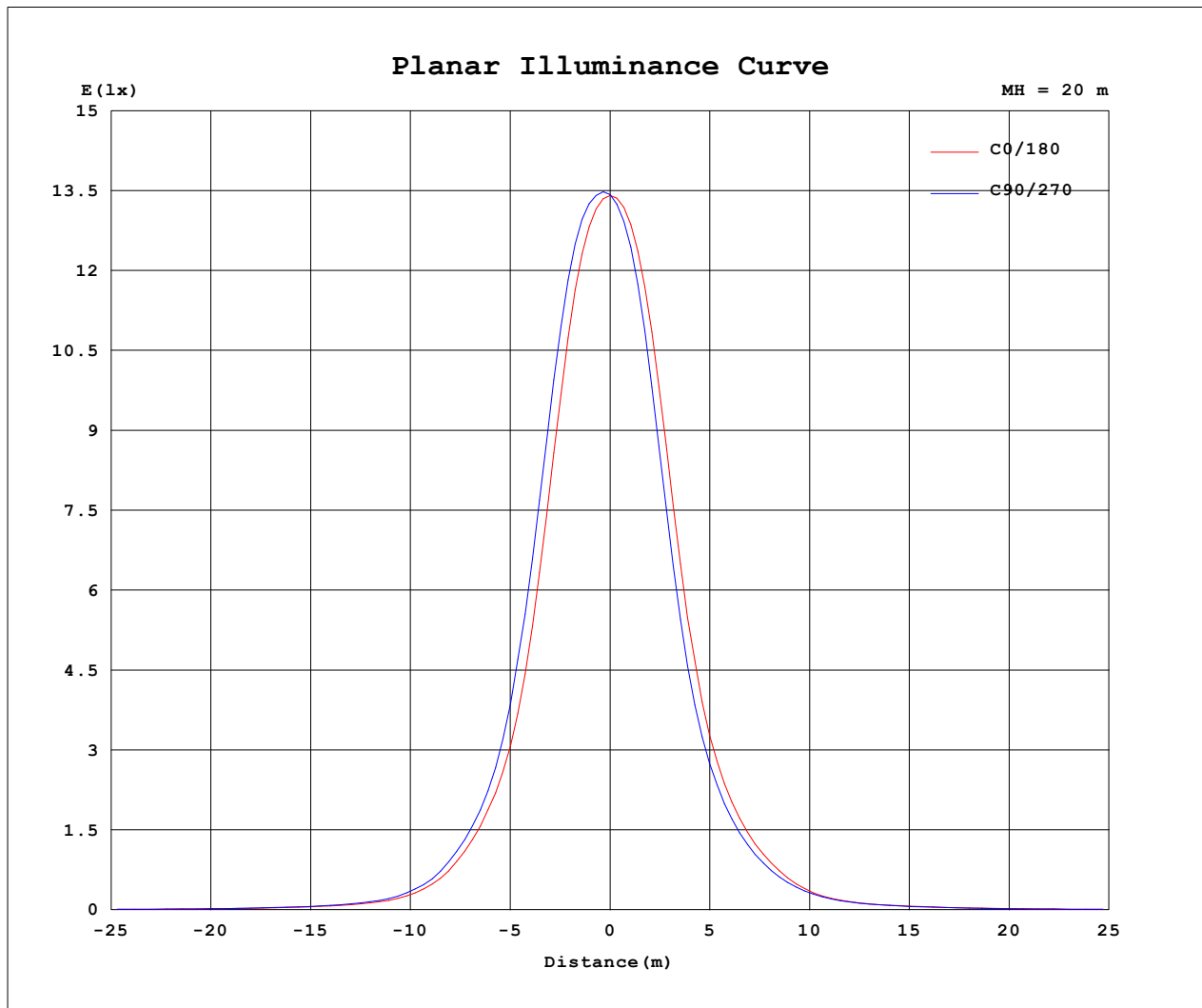
Test:U:17.653V I:0.5000A P:8.8265W PF:1.0000 Freq:49.99Hz Lamp Flux:1124.6x1 lm		
NAME: CTL-MM-1.5-30K-15-RD-AD-OPS-SG	TYPE:	WEIGHT:
SPEC.: 3000K	DIM.:	SERIAL No.: 2408201135
MFR.: MERCURY LIGHTING	SUR.: 0.001589625m2	Shielding Angle:

AvgL	cd/m2
L_0~180 (65) av	15927
L_0~180 (75) av	14502
L_0~180 (85) av	3453
L_90~270 (65) av	15583
L_90~270 (75) av	14149
L_90~270 (85) av	4106
L_45 (65) av	15722
L_45 (75) av	14318
L_45 (85) av	3634

Standard: GB/T 29293-2012

C Range: 0 - 360DEG	γ Range: 0 - 180DEG
C Interval: For a lens beam angle of 15°	γ Interval: 1.0DEG
Test Speed: HIGH	Test System: EVERFINE GO-SPEX500_V1 SYSTEM V2.00.461
Temperature: 77.54°F	Humidity: 65.0%
Operators: zoe	Test Distance: 124.409" [K=1.0000]
Test Date: 2024-8-20	Remarks: LAMP: BXRH-30G10T0-G-83 Ra: 90
	LENS: PM-1084 15R
	NO DRIVER: 500mA
	30minutes warm-up

Planar Illuminance Curve



C Range: 0 - 360DEG

C Interval: For a lens beam angle of 15°

Test Speed: HIGH

Temperature: 77.54°F

Operators: zoe

Test Date: 2024-8-20

γ Range: 0 - 180DEG

γ Interval: 1.0DEG

Test System: EVERFINE GO-SPEX500_V1 SYSTEM V2.00.461

Humidity: 65.0%

Test Distance: 124.409" [K=1.0000]

Remarks: LAMP: BXRH-30G10T0-G-83 Ra: 90

LENS: PM-1084 15R

NO DRIVER: 500mA

30minutes warm-up

LUMINOUS DISTRIBUTION INTENSITY DATA

Test:U:17.653V I:0.5000A P:8.8265W PF:1.0000 Freq:49.99Hz Lamp Flux:1124.6x1 lm		
NAME: CTL-MM-1.5-30K-15-RD-AD-OPS-SG	TYPE:	WEIGHT:
SPEC.: 3000K	DIM.:	SERIAL No.: 2408201135
MFR.: MERCURY LIGHTING	SUR.: 0.001589625m2	Shielding Angle:

Table--1

UNIT: cd

C (DEG) γ (DEG)	0	30	60	90	120	150	180	210	240	270	300	330						
0	5371	5371	5371	5371	5371	5371	5371	5371	5371	5371	5371	5371						
5	4713	4887	4998	5055	5015	4907	4736	4559	4450	4397	4450	4569						
10	2655	2931	3126	3220	3143	2963	2722	2481	2353	2283	2329	2457						
15	1156	1269	1354	1425	1403	1339	1242	1139	1086	1043	1059	1085						
20	533	576	605	639	646	634	598	556	527	504	510	511						
25	214	228	240	256	268	268	262	253	245	231	226	213						
30	96.0	101	106	112	115	115	113	114	113	108	105	97.9						
35	58.0	59.0	60.7	63.5	65.0	65.8	65.8	66.0	65.2	63.1	61.8	59.1						
40	38.6	39.2	40.4	42.5	43.8	45.0	45.5	44.7	43.5	41.8	40.6	39.2						
45	26.0	26.2	26.9	28.3	29.3	30.4	30.5	29.7	28.6	27.5	26.7	26.1						
50	19.9	19.9	20.2	21.2	22.0	22.7	23.0	22.5	21.8	21.1	20.7	20.1						
55	15.3	15.1	15.2	16.1	16.9	17.5	18.0	17.5	17.0	16.6	16.0	15.5						
60	12.0	11.8	11.9	12.5	13.1	13.7	14.3	14.1	13.6	13.2	12.7	12.2						
65	9.78	9.65	9.63	9.93	10.5	11.1	11.6	11.6	11.4	11.0	10.5	10.1						
70	7.75	7.41	7.29	7.56	8.09	8.85	9.57	9.65	9.47	9.08	8.61	8.15						
75	5.20	4.78	4.62	4.81	5.25	5.95	6.74	7.15	7.17	6.83	6.41	5.79						
80	2.45	2.09	1.91	2.05	2.39	2.96	3.64	4.09	4.31	4.11	3.62	3.00						
85	0.22	0.12	0.10	0.10	0.13	0.35	0.74	1.03	1.18	1.04	0.73	0.40						
90	0.00	0.00	0.00	0.00	0.00	0.00	0.00	0.00	0.00	0.00	0.00	0.00						
95	0.00	0.00	0.00	0.00	0.00	0.00	0.00	0.00	0.00	0.00	0.00	0.00						
100	0.00	0.00	0.00	0.00	0.00	0.00	0.00	0.00	0.00	0.00	0.00	0.00						
105	0.00	0.00	0.00	0.00	0.00	0.00	0.00	0.00	0.00	0.00	0.00	0.00						
110	0.00	0.00	0.00	0.00	0.00	0.00	0.00	0.00	0.00	0.00	0.00	0.00						
115	0.00	0.00	0.00	0.00	0.00	0.00	0.00	0.00	0.00	0.00	0.00	0.00						
120	0.00	0.00	0.00	0.00	0.00	0.00	0.00	0.00	0.00	0.00	0.00	0.00						
125	0.00	0.00	0.00	0.00	0.00	0.00	0.00	0.00	0.00	0.00	0.00	0.00						
130	0.00	0.00	0.00	0.00	0.00	0.00	0.00	0.00	0.00	0.00	0.00	0.00						
135	0.00	0.00	0.00	0.00	0.00	0.00	0.00	0.00	0.00	0.00	0.00	0.00						
140	0.00	0.00	0.00	0.00	0.00	0.00	0.00	0.00	0.00	0.00	0.00	0.00						
145	0.00	0.00	0.00	0.00	0.00	0.00	0.00	0.00	0.00	0.00	0.00	0.00						
150	0.00	0.00	0.00	0.00	0.00	0.00	0.00	0.00	0.00	0.00	0.00	0.00						
155	0.00	0.00	0.00	0.00	0.00	0.00	0.00	0.00	0.00	0.00	0.00	0.00						
160	0.00	0.00	0.00	0.00	0.00	0.00	0.00	0.00	0.00	0.00	0.00	0.00						
165	0.00	0.00	0.00	0.00	0.00	0.00	0.00	0.00	0.00	0.00	0.00	0.00						
170	0.00	0.00	0.00	0.00	0.00	0.00	0.00	0.00	0.00	0.00	0.00	0.00						
175	0.00	0.00	0.00	0.00	0.00	0.00	0.00	0.00	0.00	0.00	0.00	0.00						
180	0.00	0.00	0.00	0.00	0.00	0.00	0.00	0.00	0.00	0.00	0.00	0.00						

C Range: 0 - 360DEG

C Interval:For a lens beam angle of 15°

Test Speed: HIGH

Temperature:77.54°F

Operators:zoe

Test Date:2024-8-20

γ Range: 0 - 180DEG

γ Interval: 1.0DEG

Test System:EVERFINE GO-SPEX500_V1 SYSTEM V2.00.461

Humidity:65.0%

Test Distance:124.409" [K=1.0000]

Remarks: LAMP:BXRH-30G10T0-G-83 Ra:90

LENS:PM-1084 15R

NO DRIVER:500mA

30minutes warm-up