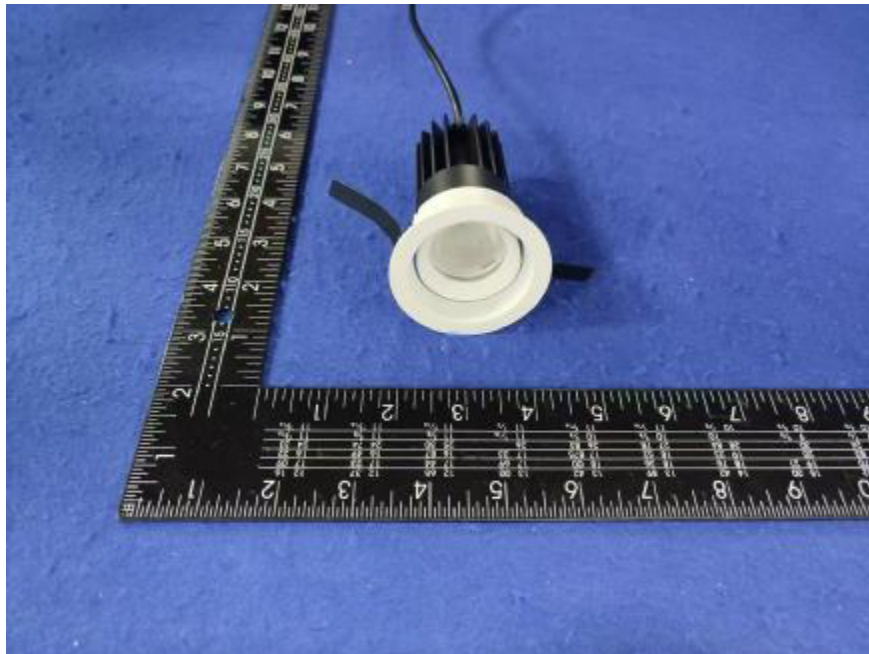


Photometric report for Flanged and Flangeless Trim



Light Output Ratio:	83.2%	
Luminaire Power:	8.825 W	
SHR Nominal:	0.75	Calculated using the TM5
SHR Maximum:	0.85	fine grid method.

C Range: 0 - 360DEG
C Interval: For a lens beam angle of 60°
Test Speed: HIGH
Temperature: 77.54°F
Operators: zoe
Test Date: 2024-8-21

γ Range: 0 - 180DEG
γ Interval: 1.0DEG
Test System: EVERFINE GO-SPEX500_V1 SYSTEM V2.00.461
Humidity: 65.0%
Test Distance: 124.409" [K=1.0000]
Remarks: LAMP: BXRH-30G10T0-G-83 Ra:90
LENS: PM-1084C 50R
NO DRIVER: 500mA
30minutes warm-up

LUMINOUS INTENSITY DISTRIBUTION DIAGRAM

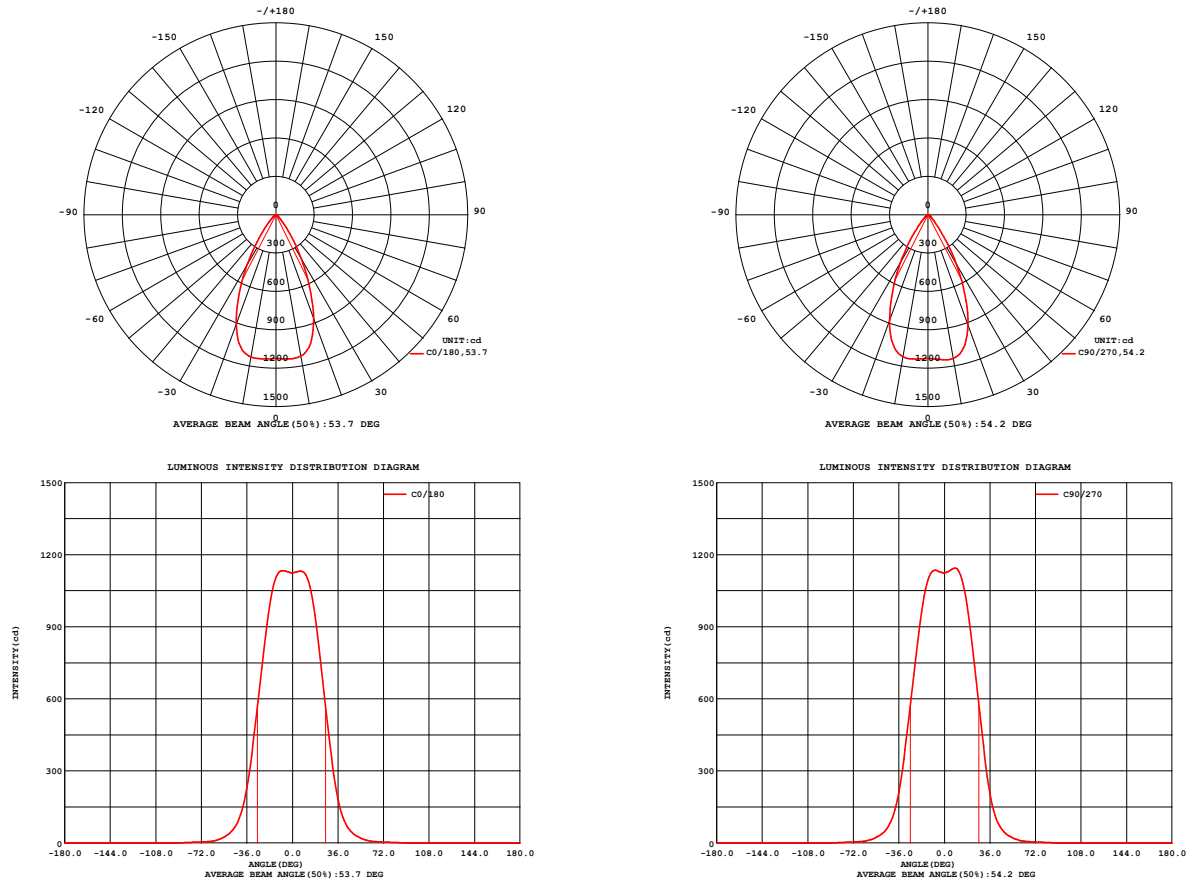


Fig. C0/C180

Fig. C90/C270

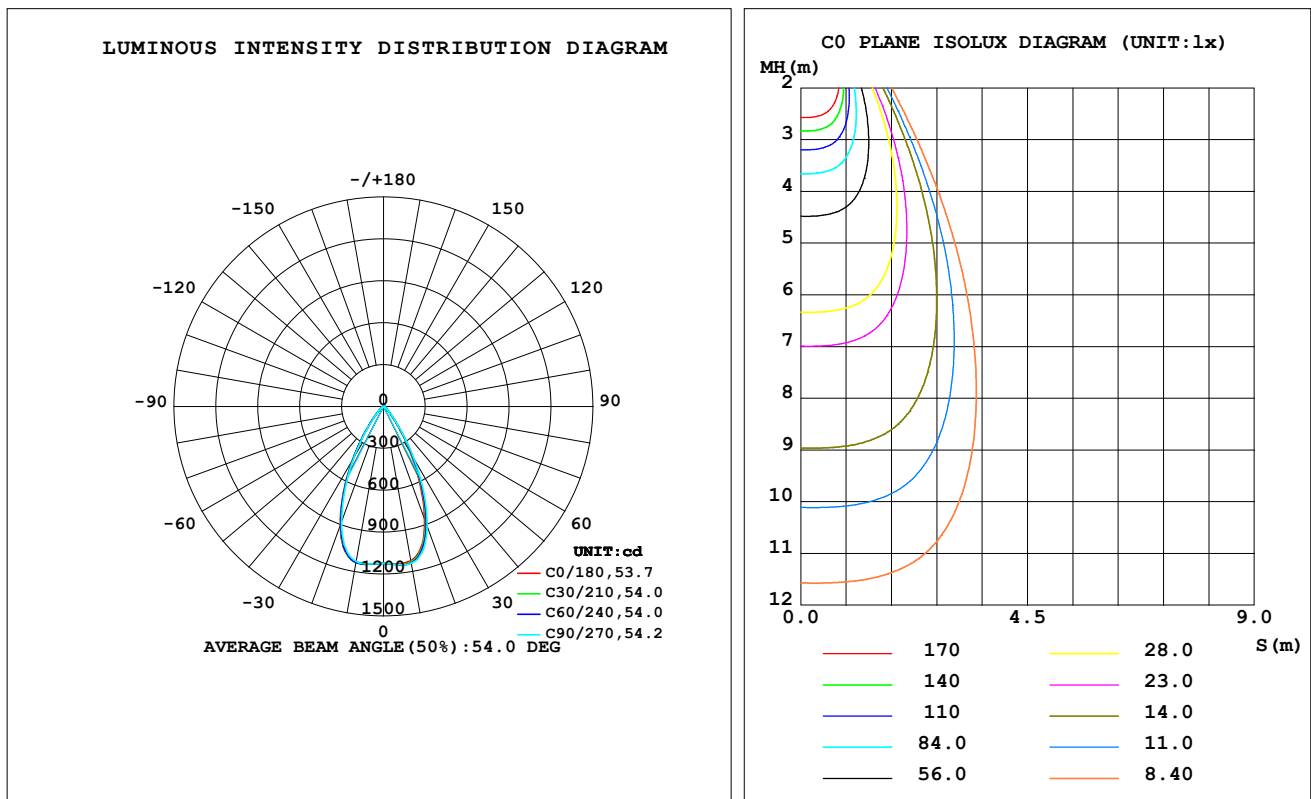
C Range: 0 - 360DEG
C Interval: For a lens beam angle of 60°
Test Speed: HIGH
Temperature: 77.54°F
Operators: zoe
Test Date: 2024-8-21

γ Range: 0 - 180DEG
γ Interval: 1.0DEG
Test System: EVERFINE GO-SPEX500_V1 SYSTEM V2.00.461
Humidity: 65.0%
Test Distance: 124.409" [K=1.0000]
Remarks: LAMP: BXRH-30G10T0-G-83 Ra: 90
LENS: PM-1084C 50R
NO DRIVER: 500mA
30minutes warm-up

LUMINAIRE PHOTOMETRIC TEST REPORT

Test:U:17.650V I:0.5000A P:8.8250W PF:1.0000 Freq:49.99Hz Lamp Flux:1124.6x1 lm		
NAME: CTL-MM-1.5-30K-60-RD-AD-OPL-SG	TYPE:	WEIGHT:
SPEC.: 3000K	DIM.:	SERIAL No.: 2408211147
MFR.: MERCURY LIGHTING	SUR.: 0.001589625m2	Shielding Angle:

DATA OF LAMP		PHOTOMETRIC DATA Eff: 106.01 lm/W			
MODEL	Brideglux	I _{max} (cd)	1144	S/MH (C0/180)	0.83
NOMINAL POWER (W)	9	LOR (%)	83.2	S/MH (C90/270)	0.82
RATED VOLTAGE (V)	18	TOTAL FLUX (lm)	935.54	η UP, DN (C0-180)	0.0, 41.5
NOMINAL FLUX (lm)	1124.6	CIE CLASS	DIRECT	η UP, DN (C180-360)	0.0, 41.7
LAMPS INSIDE	1	η up (%)	0.0	CIBSE SHR NOM	0.75
TEST VOLTAGE (V)	18	η down (%)	83.2	CIBSE SHR MAX	0.85



C Range: 0 - 360DEG

C Interval: For a lens beam angle of 60°

Test Speed: HIGH

Temperature: 77.54°F

Operators: zoe

Test Date: 2024-8-21

γ Range: 0 - 180DEG

γ Interval: 1.0DEG

Test System: EVERFINE GO-SPEX500_V1 SYSTEM V2.00.461

Humidity: 65.0%

Test Distance: 124.409" [K=1.0000]

Remarks: LAMP: BXRH-30G10T0-G-83 Ra: 90

LENS: PM-1084C 50R

NO DRIVER: 500mA

30minutes warm-up

ZONAL FLUX DIAGRAM

ZONAL FLUX DIAGRAM:

γ	C0	C45	C90	C135	C180	C225	C270	C315	γ	Φ zone	Φ total	%lum,lamp
10	1121	1135	1141	1129	1129	1135	1127	1117	0- 10	108.1	108.1	11.6,9.61
20	862.9	889.0	915.2	905.4	909.2	899.0	880.2	863.9	10- 20	291.5	399.6	42.7,35.5
30	397.4	424.8	448.1	448.8	455.7	445.8	430.5	413.5	20- 30	300.0	699.6	74.8,62.2
40	107.4	113.0	118.0	125.1	132.7	129.1	120.6	113.5	30- 40	154.8	854.4	91.3,76
50	31.41	32.19	33.19	35.68	38.09	37.12	34.70	32.80	40- 50	51.14	905.6	96.8,80.5
60	9.821	9.962	10.43	11.07	11.37	11.25	10.73	10.21	50- 60	18.54	924.1	98.8,82.2
70	4.140	4.166	4.277	4.466	4.582	4.503	4.339	4.203	60- 70	6.588	930.7	99.5,82.8
80	2.352	2.385	2.476	2.570	2.640	2.600	2.508	2.397	70- 80	3.499	934.2	99.9,83.1
90	0	0	0	0	0	0	0	0	80- 90	1.354	935.5	100,83.2
100	0	0	0	0	0	0	0	0	90-100	0	935.5	100,83.2
110	0	0	0	0	0	0	0	0	100-110	0	935.5	100,83.2
120	0	0	0	0	0	0	0	0	110-120	0	935.5	100,83.2
130	0	0	0	0	0	0	0	0	120-130	0	935.5	100,83.2
140	0	0	0	0	0	0	0	0	130-140	0	935.5	100,83.2
150	0	0	0	0	0	0	0	0	140-150	0	935.5	100,83.2
160	0	0	0	0	0	0	0	0	150-160	0	935.5	100,83.2
170	0	0	0	0	0	0	0	0	160-170	0	935.5	100,83.2
180	0	0	0	0	0	0	0	0	170-180	0	935.5	100,83.2
DEG	LUMINOUS INTENSITY:cd									UNIT:lm		

C Range: 0 - 360DEG

C Interval:For a lens beam angle of 60°

Test Speed: HIGH

Temperature:77.54°F

Operators:zoe

Test Date:2024-8-21

 γ Range: 0 - 180DEG

 γ Interval: 1.0DEG

Test System:EVERFINE GO-SPEX500_V1 SYSTEM V2.00.461

Humidity:65.0%

Test Distance:124.409" [K=1.0000]

Remarks: LAMP:BXRH-30G10T0-G-83 Ra:90

LENS:PM-1084C 50R

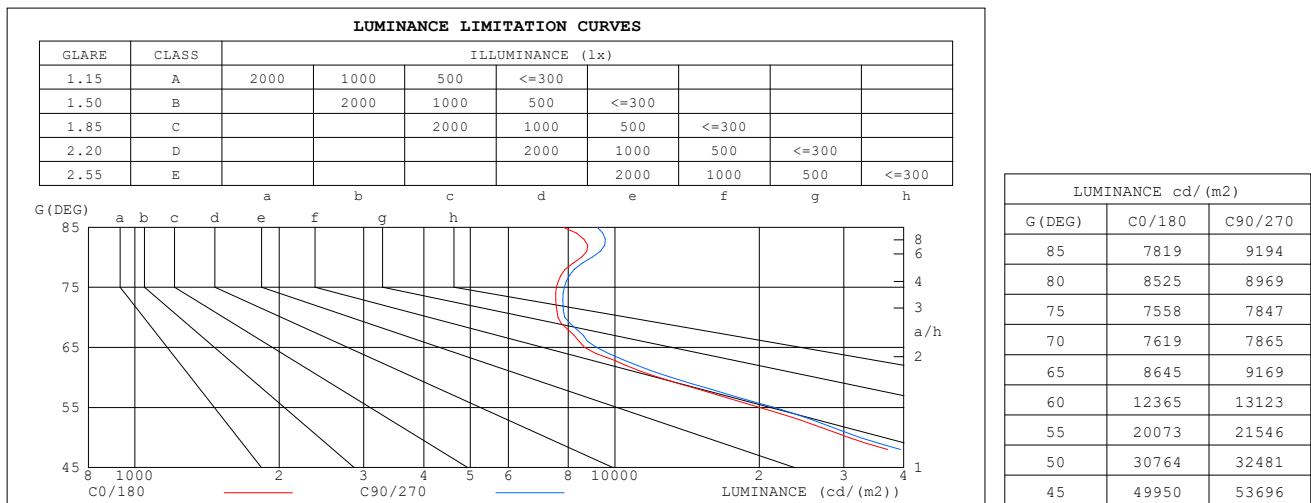
NO DRIVER:500mA

30minutes warm-up



LUMINANCE LIMITATION CURVES

Test:U:17.650V I:0.5000A P:8.8250W PF:1.0000 Freq:49.99Hz Lamp Flux:1124.6x1 lm		
NAME: CTL-MM-1.5-30K-60-RD-AD-OPL-SG	TYPE:	WEIGHT:
SPEC.: 3000K	DIM.:	SERIAL No.: 2408211147
MFR.: MERCURY LIGHTING	SUR.: 0.001589625m2	Shielding Angle:



C Range: 0 - 360DEG
C Interval: For a lens beam angle of 60°
Test Speed: HIGH
Temperature: 77.54°F
Operators: zoe
Test Date: 2024-8-21

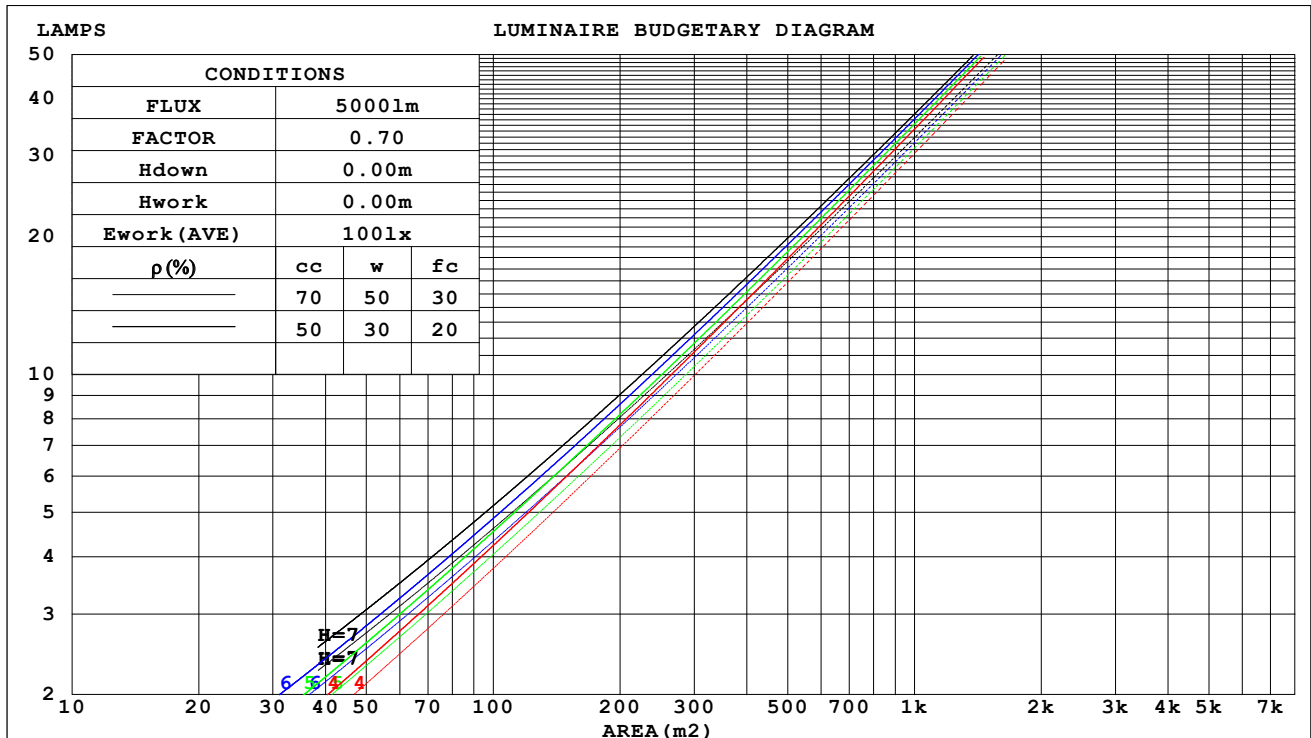
γ Range: 0 - 180DEG
γ Interval: 1.0DEG
Test System: EVERFINE GO-SPEX500_V1 SYSTEM V2.00.461
Humidity: 65.0%
Test Distance: 124.409" [K=1.0000]
Remarks: LAMP: BXRH-30G10T0-G-83 Ra: 90
LENS: PM-1084C 50R
NO DRIVER: 500mA
30minutes warm-up

CU AND LUMINAIRE BUDGETARY ESTIMATE DIAGRAM

 Test:U:17.650V I:0.5000A P:8.8250W PF:1.0000 Freq:49.99Hz
 Lamp Flux:1124.6x1 lm

NAME: CTL-MM-1.5-30K-60-RD-AD-OPL-SG	TYPE:	WEIGHT:
SPEC.: 3000K	DIM.:	SERIAL No.: 2408211147
MFR.: MERCURY LIGHTING	SUR.: 0.001589625m2	Shielding Angle:

pcc	80%			70%			50%			30%			10%			0
pw	50%	30%	10%	50%	30%	10%	50%	30%	10%	50%	30%	10%	50%	30%	10%	0
pfc	20%			20%			20%			20%			20%			0
RCR	RCR:Room Cavity Ratio Coefficients of Utilization(CU)															
0.0	.99	.99	.99	.97	.97	.97	.92	.92	.92	.88	.88	.88	.85	.85	.85	.83
1.0	.92	.90	.88	.90	.88	.87	.87	.85	.84	.84	.83	.82	.81	.80	.79	.78
2.0	.86	.82	.80	.84	.81	.79	.82	.79	.77	.79	.77	.75	.77	.75	.74	.72
3.0	.80	.76	.73	.79	.75	.72	.77	.74	.71	.75	.72	.70	.73	.71	.69	.68
4.0	.75	.70	.67	.74	.70	.67	.72	.69	.66	.71	.68	.65	.69	.66	.64	.63
5.0	.70	.66	.62	.70	.65	.62	.68	.64	.61	.67	.63	.61	.65	.63	.60	.59
6.0	.66	.61	.58	.66	.61	.58	.64	.60	.57	.63	.60	.57	.62	.59	.56	.55
7.0	.62	.58	.54	.62	.57	.54	.61	.57	.54	.60	.56	.53	.59	.56	.53	.52
8.0	.59	.54	.51	.59	.54	.51	.58	.53	.50	.57	.53	.50	.56	.53	.50	.49
9.0	.56	.51	.48	.55	.51	.48	.55	.51	.48	.54	.50	.47	.53	.50	.47	.46
10.0	.53	.48	.45	.53	.48	.45	.52	.48	.45	.51	.48	.45	.51	.47	.45	.44



C Range: 0 - 360DEG

C Interval: For a lens beam angle of 60°

Test Speed: HIGH

Temperature: 77.54°F

Operators: zoe

Test Date: 2024-8-21

 γ Range: 0 - 180DEG

 γ Interval: 1.0DEG

Test System: EVERFINE GO-SPEX500_V1 SYSTEM V2.00.461

Humidity: 65.0%

Test Distance: 124.409" [K=1.0000]

Remarks: LAMP: BXRH-30G10T0-G-83 Ra: 90

LENS: PM-1084C 50R

NO DRIVER: 500mA

30minutes warm-up

WEC AND CCEC

Test:U:17.650V I:0.5000A P:8.8250W PF:1.0000 Freq:49.99Hz Lamp Flux:1124.6x1 lm		
NAME: CTL-MM-1.5-30K-60-RD-AD-OPL-SG	TYPE:	WEIGHT:
SPEC.: 3000K	DIM.:	SERIAL No.: 2408211147
MFR.: MERCURY LIGHTING	SUR.: 0.001589625m2	Shielding Angle:

pcc	80%			70%			50%			30%			10%			0
pw	50%	30%	10%	50%	30%	10%	50%	30%	10%	50%	30%	10%	50%	30%	10%	0
pfc	20%			20%			20%			20%			20%			0
RCR	RCR:Room Cavity Ratio						Wall Exitance Coefficients(WEC)									
0.0																
1.0	.149	.084	.027	.143	.082	.026	.132	.076	.024	.123	.071	.023	.114	.066	.021	
2.0	.142	.078	.024	.137	.075	.023	.128	.071	.022	.120	.067	.021	.112	.064	.020	
3.0	.134	.072	.021	.130	.070	.021	.123	.067	.020	.116	.064	.019	.110	.061	.019	
4.0	.128	.066	.020	.124	.065	.019	.118	.062	.019	.112	.060	.018	.106	.058	.018	
5.0	.121	.062	.018	.119	.061	.018	.113	.059	.017	.108	.057	.017	.103	.055	.016	
6.0	.116	.058	.017	.113	.057	.016	.108	.055	.016	.104	.054	.016	.099	.052	.016	
7.0	.110	.055	.015	.108	.054	.015	.104	.052	.015	.100	.051	.015	.096	.050	.015	
8.0	.106	.052	.015	.104	.051	.014	.100	.050	.014	.096	.049	.014	.093	.047	.014	
9.0	.101	.049	.014	.099	.048	.014	.096	.047	.013	.092	.046	.013	.089	.045	.013	
10.0	.097	.047	.013	.095	.046	.013	.092	.045	.013	.089	.044	.013	.086	.043	.012	

pcc	80%			70%			50%			30%			10%			0
pw	50%	30%	10%	50%	30%	10%	50%	30%	10%	50%	30%	10%	50%	30%	10%	0
pfc	20%			20%			20%			20%			20%			0
RCR	RCR:Room Cavity Ratio						Ceiling Cavity Exitance Coefficients(CCEC)									
0.0	.158	.158	.158	.135	.135	.135	.092	.092	.092	.053	.053	.053	.017	.017	.017	
1.0	.142	.131	.120	.122	.112	.104	.083	.077	.072	.048	.045	.042	.015	.014	.013	
2.0	.130	.110	.094	.111	.095	.081	.076	.066	.057	.044	.038	.033	.014	.012	.011	
3.0	.119	.094	.075	.102	.081	.065	.070	.057	.045	.041	.033	.027	.013	.011	.009	
4.0	.111	.082	.060	.095	.071	.052	.065	.050	.037	.038	.029	.022	.012	.009	.007	
5.0	.104	.073	.050	.089	.063	.043	.061	.044	.031	.036	.026	.018	.011	.008	.006	
6.0	.097	.065	.041	.084	.056	.036	.058	.039	.026	.033	.023	.015	.011	.008	.005	
7.0	.092	.059	.035	.079	.051	.031	.055	.036	.022	.032	.021	.013	.010	.007	.004	
8.0	.087	.053	.030	.075	.046	.026	.052	.032	.019	.030	.019	.011	.010	.006	.004	
9.0	.083	.049	.026	.071	.043	.023	.049	.030	.016	.029	.018	.010	.009	.006	.003	
10.0	.079	.045	.023	.068	.039	.020	.047	.028	.014	.028	.016	.008	.009	.005	.003	

C Range: 0 - 360DEG
 C Interval:For a lens beam angle of 60°
 Test Speed: HIGH
 Temperature:77.54°F
 Operators:zoe
 Test Date:2024-8-21

γ Range: 0 - 180DEG
 γ Interval: 1.0DEG
 Test System:EVERFINE GO-SPEX500_V1 SYSTEM V2.00.461
 Humidity:65.0%
 Test Distance:124.409" [K=1.0000]
 Remarks: LAMP:BXRH-30G10T0-G-83 Ra:90
 LENS:PM-1084C 50R
 NO DRIVER:500mA
 30minutes warm-up

UGR(Unified Glare Rating) Table

Test:U:17.650V I:0.5000A P:8.8250W PF:1.0000 Freq:49.99Hz Lamp Flux:1124.6x1 lm											
NAME: CTL-MM-1.5-30K-60-RD-AD-OPL-SG					TYPE:			WEIGHT:			
SPEC.: 3000K					DIM.:			SERIAL No.: 2408211147			
MFR.: MERCURY LIGHTING					SUR.: 0.001589625m2			Shielding Angle:			
ceiling/cavity	0.7	0.7	0.5	0.5	0.3	0.7	0.7	0.5	0.5	0.3	
walls	0.5	0.3	0.5	0.3	0.3	0.5	0.3	0.5	0.3	0.3	
working plane	0.2	0.2	0.2	0.2	0.2	0.2	0.2	0.2	0.2	0.2	
Room dimensions		Viewed crosswise					Viewed endwise				
x = 2H y = 2H	2H	20.8	21.7	21.0	21.9	22.0	21.1	22.1	21.3	22.2	22.4
	3H	20.7	21.5	20.9	21.7	21.9	21.0	21.9	21.3	22.1	22.3
	4H	20.6	21.5	20.9	21.7	21.9	21.0	21.8	21.3	22.0	22.3
	6H	20.6	21.4	20.9	21.6	21.9	21.0	21.7	21.3	22.0	22.2
	8H	20.6	21.3	20.9	21.6	21.8	21.0	21.7	21.3	21.9	22.2
	12H	20.6	21.3	20.9	21.6	21.8	20.9	21.6	21.3	21.9	22.2
4H	2H	20.6	21.4	20.8	21.6	21.8	20.9	21.7	21.2	22.0	22.2
	3H	20.5	21.2	20.8	21.5	21.8	20.9	21.6	21.2	21.8	22.1
	4H	20.5	21.1	20.9	21.4	21.8	20.9	21.5	21.2	21.8	22.1
	6H	20.5	21.1	20.9	21.4	21.8	20.9	21.4	21.2	21.8	22.1
	8H	20.5	21.1	20.9	21.4	21.8	20.9	21.4	21.3	21.7	22.1
	12H	20.5	21.0	20.9	21.4	21.8	20.9	21.4	21.3	21.7	22.1
8H	4H	20.4	20.9	20.8	21.3	21.7	20.8	21.3	21.1	21.6	22.0
	6H	20.5	20.9	20.9	21.3	21.7	20.8	21.2	21.2	21.6	22.0
	8H	20.5	20.9	21.0	21.3	21.7	20.8	21.2	21.3	21.6	22.1
	12H	20.5	20.9	21.0	21.3	21.8	20.9	21.2	21.3	21.6	22.1
12H	4H	20.4	20.8	20.8	21.2	21.6	20.7	21.2	21.1	21.6	22.0
	6H	20.4	20.8	20.9	21.2	21.7	20.8	21.2	21.2	21.6	22.0
	8H	20.5	20.8	21.0	21.3	21.7	20.8	21.2	21.3	21.6	22.1
Variations with the observer position at spacings(CIE Pub.117) :											
S = 1.0H	+ 2.4 / - 4.2					+ 2.7 / - 4.3					
1.5H	+ 4.0 / - 3.4					+ 4.4 / - 3.6					
2.0H	+ 3.6 / - 2.8					+ 3.8 / - 2.9					

CIE Pub.117, 1125 lm Total Lamp Luminous Flux Correct (8log(F/F0) = 0.4)
 Area: 0.00158963 m2

C Range: 0 - 360DEG

C Interval:For a lens beam angle of 60°

Test Speed: HIGH

Temperature:77.54°F

Operators:zoe

Test Date:2024-8-21

γ Range: 0 - 180DEG

γ Interval: 1.0DEG

Test System:EVERFINE GO-SPEX500_V1 SYSTEM V2.00.461

Humidity:65.0%

Test Distance:124.409" [K=1.0000]

Remarks: LAMP:BXRH-30G10T0-G-83 Ra:90

LENS:PM-1084C 50R

NO DRIVER:500mA

30minutes warm-up

UTILIZATION FACTORS TABLE

Test:U:17.650V I:0.5000A P:8.8250W PF:1.0000 Freq:49.99Hz Lamp Flux:1124.6x1 lm		
NAME: CTL-MM-1.5-30K-60-RD-AD-OPL-SG	TYPE:	WEIGHT:
SPEC.: 3000K	DIM.:	SERIAL No.: 2408211147
MFR.: MERCURY LIGHTING	SUR.: 0.001589625m2	Shielding Angle:

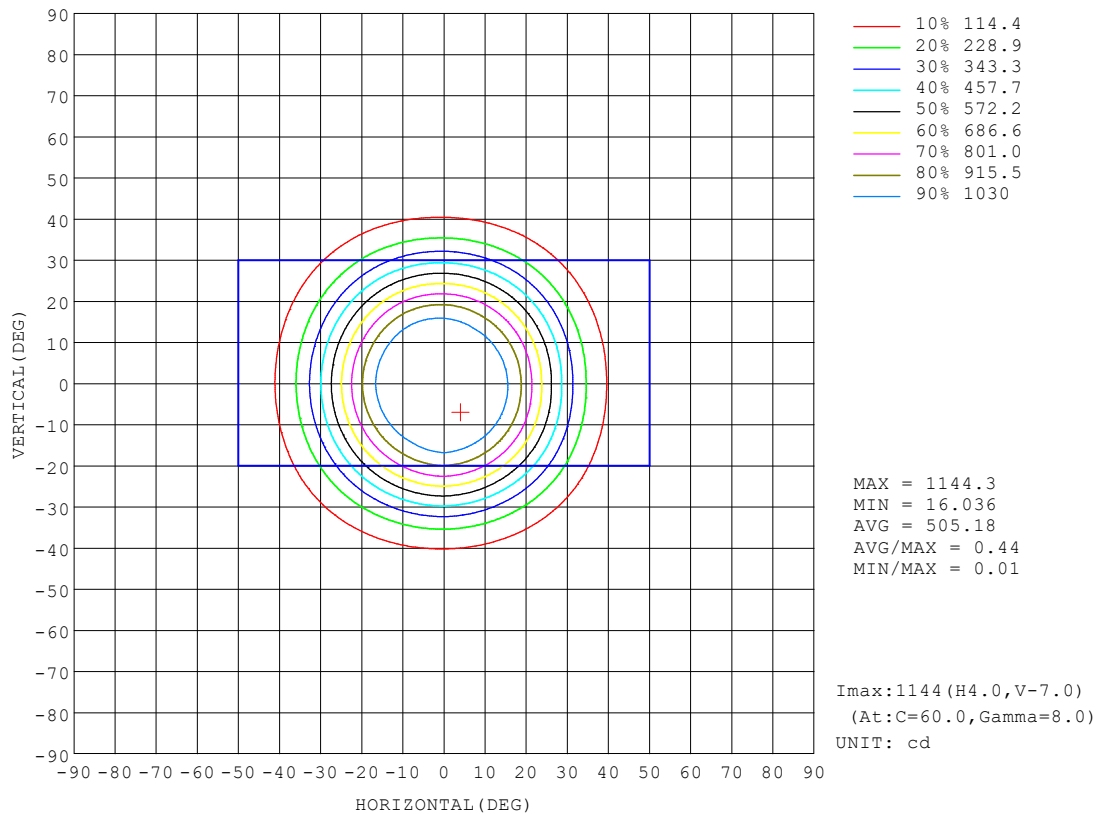
REFLECTANCE										
Ceiling	0.8	0.8	0.8	0.7	0.7	0.7	0.5	0.5	0.5	0
Walls	0.7	0.5	0.3	0.7	0.5	0.3	0.7	0.5	0.3	0
Working plane	0.2	0.2	0.2	0.2	0.2	0.2	0.2	0.2	0.2	0
ROOM INDEX	UTILIZATION FACTORS (PERCENT) $k(RI) \times RCR = 5$									
$k = 0.60$	72	66	63	71	66	63	71	66	63	60
0.80	78	73	70	77	73	70	76	72	69	66
1.00	82	77	74	81	77	74	80	77	73	70
1.25	85	81	78	84	80	78	83	79	77	73
1.50	88	84	81	87	83	80	85	82	79	76
2.00	90	86	84	89	86	83	87	84	82	77
2.50	91	88	86	90	87	85	87	85	83	78
3.00	93	90	87	91	89	87	88	86	85	79
4.00	94	92	90	93	91	89	90	88	87	81
5.00	96	94	92	94	92	91	90	89	88	82
ROOM INDEX	UF(total)									Direct
According to DIN EN 13032-2 2004			Suspended					SHRNOM = 1.25		

C Range: 0 - 360DEG
 C Interval: For a lens beam angle of 60°
 Test Speed: HIGH
 Temperature: 77.54°F
 Operators: zoe
 Test Date: 2024-8-21

γ Range: 0 - 180DEG
 γ Interval: 1.0DEG
 Test System: EVERFINE GO-SPEX500_V1 SYSTEM V2.00.461
 Humidity: 65.0%
 Test Distance: 124.409" [K=1.0000]
 Remarks: LAMP: BXRH-30G10T0-G-83 Ra:90
 LENS: PM-1084C 50R
 NO DRIVER: 500mA
 30minutes warm-up

ISOCANDELA DIAGRAM

Test:U:17.650V I:0.5000A P:8.8250W PF:1.0000 Freq:49.99Hz Lamp Flux:1124.6x1 lm		
NAME: CTL-MM-1.5-30K-60-RD-AD-OPL-SG	TYPE:	WEIGHT:
SPEC.: 3000K	DIM.:	SERIAL No.: 2408211147
MFR.: MERCURY LIGHTING	SUR.: 0.001589625m2	Shielding Angle:

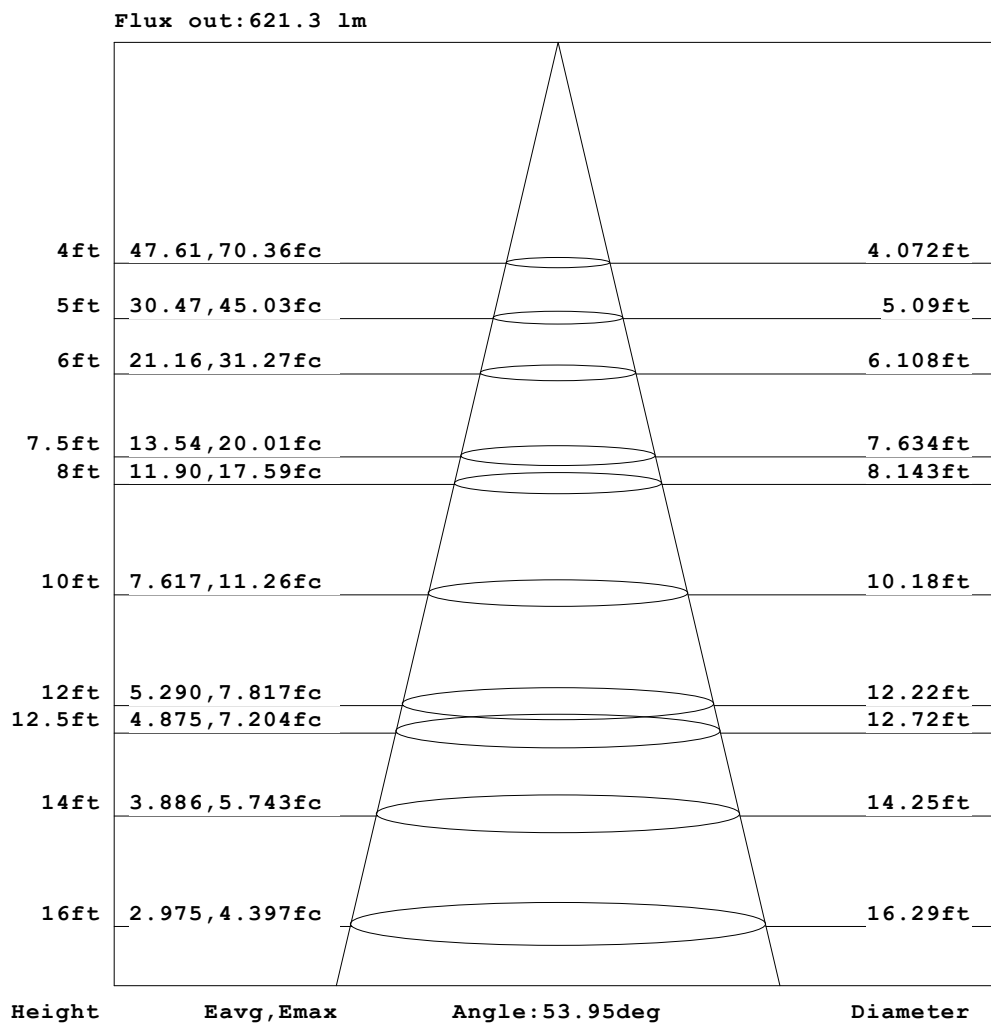


C Range: 0 - 360DEG
 C Interval: For a lens beam angle of 60°
 Test Speed: HIGH
 Temperature: 77.54°F
 Operators: zoe
 Test Date: 2024-8-21

γ Range: 0 - 180DEG
 γ Interval: 1.0DEG
 Test System: EVERFINE GO-SPEX500_V1 SYSTEM V2.00.461
 Humidity: 65.0%
 Test Distance: 124.409" [K=1.0000]
 Remarks: LAMP: BXRH-30G10T0-G-83 Ra: 90
 LENS: PM-1084C 50R
 NO DRIVER: 500mA
 30minutes warm-up

AAI Figure

Test:U:17.650V I:0.5000A P:8.8250W PF:1.0000 Freq:49.99Hz Lamp Flux:1124.6x1 lm		
NAME: CTL-MM-1.5-30K-60-RD-AD-OPL-SG	TYPE:	WEIGHT:
SPEC.: 3000K	DIM.:	SERIAL No.: 2408211147
MFR.: MERCURY LIGHTING	SUR.: 0.001589625m2	Shielding Angle:



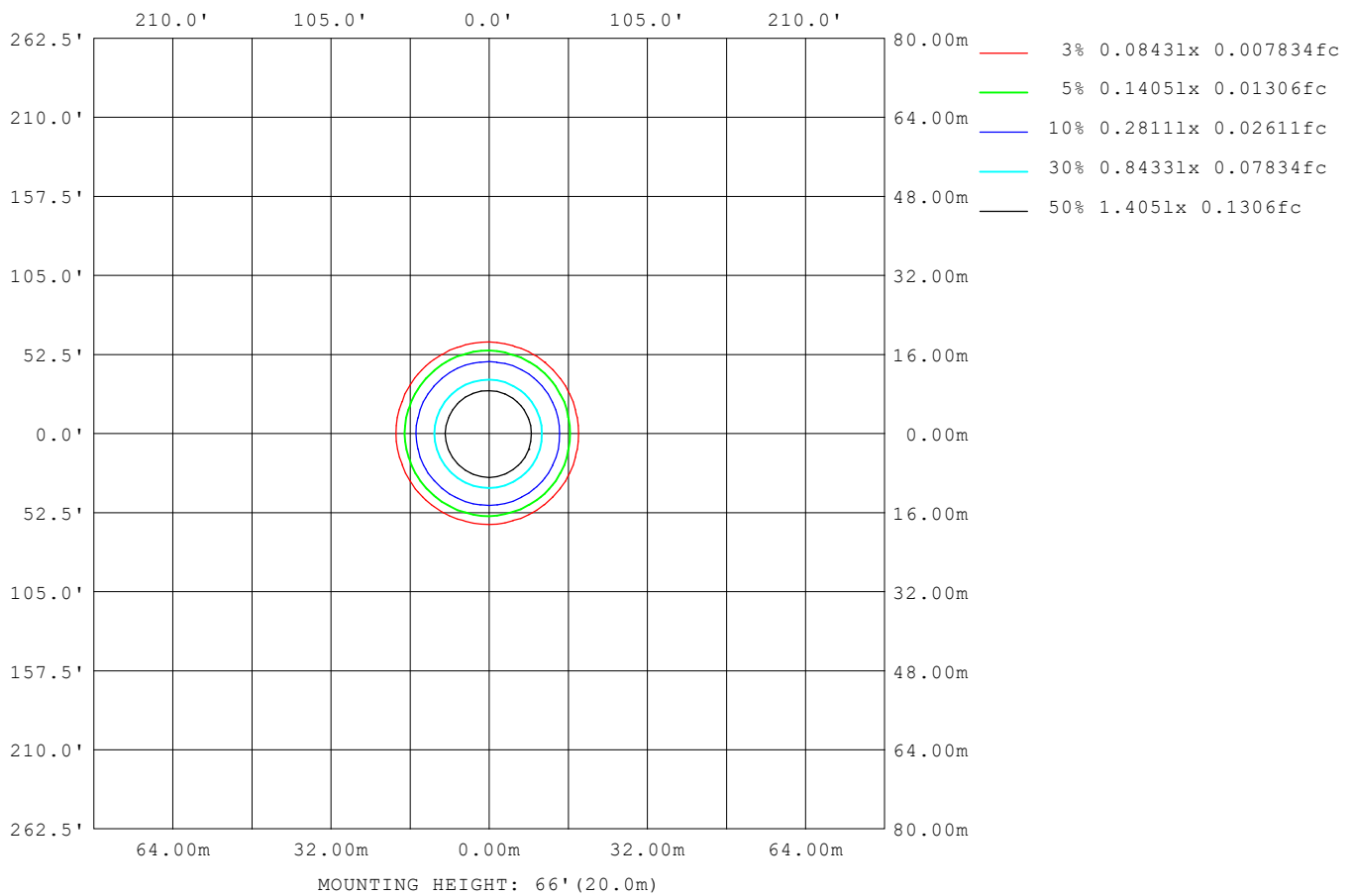
Note: The Curves indicate the illuminated area and the average illumination when the luminaire is at different distance.

C Range: 0 - 360DEG
 C Interval: For a lens beam angle of 60°
 Test Speed: HIGH
 Temperature: 77.54°F
 Operators: zoe
 Test Date: 2024-8-21

γ Range: 0 - 180DEG
 γ Interval: 1.0DEG
 Test System: EVERFINE GO-SPEX500_V1 SYSTEM V2.00.461
 Humidity: 65.0%
 Test Distance: 124.409" [K=1.0000]
 Remarks: LAMP: BXRH-30G10T0-G-83 Ra:90
 LENS: PM-1084C 50R
 NO DRIVER: 500mA
 30minutes warm-up

ISOLUX DIAGRAM

Test: U:17.650V I:0.5000A P:8.8250W PF:1.0000 Freq:49.99Hz Lamp Flux: 1124.6x1 lm		
NAME: CTL-MM-1.5-30K-60-RD-AD-OPL-SG	TYPE:	WEIGHT:
SPEC.: 3000K	DIM.:	SERIAL No.: 2408211147
MFR.: MERCURY LIGHTING	SUR.: 0.001589625m2	Shielding Angle:



C Range: 0 - 360DEG
C Interval: For a lens beam angle of 60°
Test Speed: HIGH
Temperature: 77.54°F
Operators: zoe
Test Date: 2024-8-21

γ Range: 0 - 180DEG
γ Interval: 1.0DEG
Test System: EVERFINE GO-SPEX500_V1 SYSTEM V2.00.461
Humidity: 65.0%
Test Distance: 124.409" [K=1.0000]
Remarks: LAMP: BXRH-30G10T0-G-83 Ra:90
 LENS: PM-1084C 50R
 NO DRIVER: 500mA
 30minutes warm-up

LED Avg.L Report

Test:U:17.650V I:0.5000A P:8.8250W PF:1.0000 Freq:49.99Hz Lamp Flux:1124.6x1 lm		
NAME: CTL-MM-1.5-30K-60-RD-AD-OPL-SG	TYPE:	WEIGHT:
SPEC.: 3000K	DIM.:	SERIAL No.: 2408211147
MFR.: MERCURY LIGHTING	SUR.: 0.001589625m2	Shielding Angle:

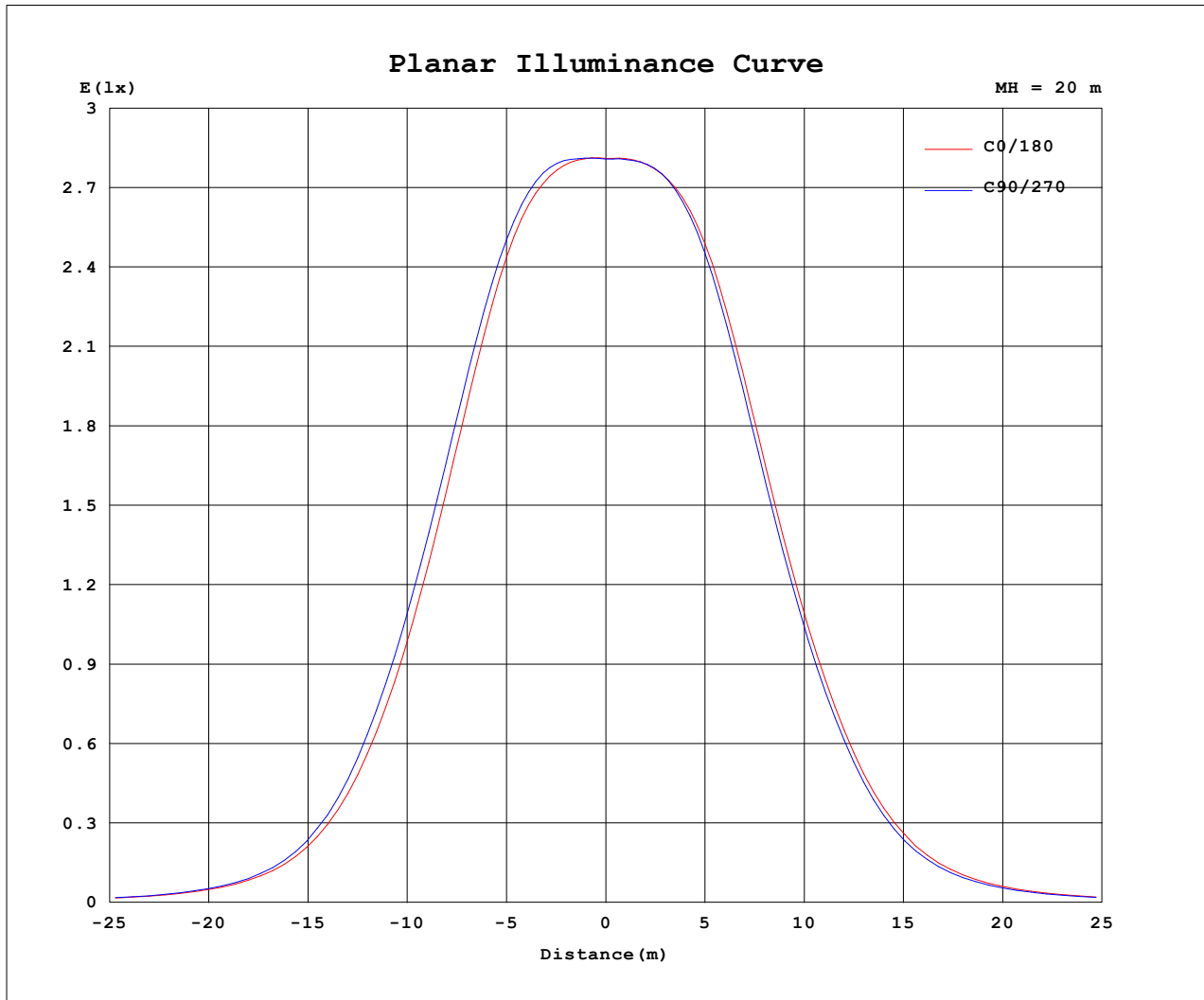
AvgL	cd/m2
L_0~180 (65) av	9206
L_0~180 (75) av	7982
L_0~180 (85) av	9114
L_90~270 (65) av	9262
L_90~270 (75) av	7928
L_90~270 (85) av	9114
L_45 (65) av	9292
L_45 (75) av	7947
L_45 (85) av	9077

Standard: GB/T 29293-2012

C Range: 0 - 360DEG
 C Interval: For a lens beam angle of 60°
 Test Speed: HIGH
 Temperature: 77.54°F
 Operators: zoe
 Test Date: 2024-8-21

γ Range: 0 - 180DEG
 γ Interval: 1.0DEG
 Test System: EVERFINE GO-SPEX500_V1 SYSTEM V2.00.461
 Humidity: 65.0%
 Test Distance: 124.409" [K=1.0000]
 Remarks: LAMP: BXRH-30G10T0-G-83 Ra: 90
 LENS: PM-1084C 50R
 NO DRIVER: 500mA
 30minutes warm-up

Planar Illuminance Curve



C Range: 0 - 360DEG
C Interval: For a lens beam angle of 60°
Test Speed: HIGH
Temperature: 77.54°F
Operators: zoe
Test Date: 2024-8-21

γ Range: 0 - 180DEG
γ Interval: 1.0DEG
Test System: EVERFINE GO-SPEX500_V1 SYSTEM V2.00.461
Humidity: 65.0%
Test Distance: 124.409" [K=1.0000]
Remarks: LAMP: BXRH-30G10T0-G-83 Ra: 90
LENS: PM-1084C 50R
NO DRIVER: 500mA
30minutes warm-up

LUMINOUS DISTRIBUTION INTENSITY DATA

Test:U:17.650V I:0.5000A P:8.8250W PF:1.0000 Freq:49.99Hz Lamp Flux:1124.6x1 lm		
NAME: CTL-MM-1.5-30K-60-RD-AD-OPL-SG	TYPE:	WEIGHT:
SPEC.: 3000K	DIM.:	SERIAL No.: 2408211147
MFR.: MERCURY LIGHTING	SUR.: 0.001589625m2	Shielding Angle:

Table--1

UNIT: cd

C (DEG) γ (DEG)	0	30	60	90	120	150	180	210	240	270	300	330						
0	1124	1124	1124	1124	1124	1124	1124	1124	1124	1124	1124	1124						
5	1131	1135	1137	1136	1133	1131	1131	1133	1133	1132	1130	1129						
10	1121	1132	1138	1141	1131	1126	1129	1135	1135	1127	1117	1116						
15	1044	1054	1064	1078	1064	1065	1071	1069	1066	1053	1035	1037						
20	863	881	897	915	905	906	909	901	897	880	866	862						
25	626	651	666	686	682	682	683	674	669	654	643	634						
30	397	420	430	448	447	450	456	448	444	430	419	408						
35	215	229	233	242	245	253	260	255	252	240	232	223						
40	107	112	114	118	122	128	133	131	127	121	116	111						
45	56.1	57.6	58.7	60.4	63.1	66.9	69.2	68.4	66.1	62.5	60.6	57.4						
50	31.4	32.0	32.4	33.2	34.6	36.8	38.1	37.8	36.4	34.7	33.6	32.0						
55	18.3	18.7	19.0	19.6	20.4	21.6	22.3	22.3	21.7	20.5	19.8	18.7						
60	9.82	9.86	10.1	10.4	10.9	11.3	11.4	11.3	11.2	10.7	10.4	9.99						
65	5.80	5.86	5.94	6.16	6.38	6.57	6.56	6.58	6.48	6.28	6.14	5.95						
70	4.14	4.15	4.18	4.28	4.40	4.53	4.58	4.54	4.46	4.34	4.24	4.17						
75	3.11	3.12	3.14	3.23	3.32	3.41	3.46	3.44	3.39	3.29	3.21	3.13						
80	2.35	2.37	2.40	2.48	2.54	2.60	2.64	2.62	2.58	2.51	2.43	2.36						
85	1.08	1.12	1.17	1.27	1.35	1.42	1.44	1.40	1.34	1.25	1.17	1.10						
90	0.00	0.00	0.00	0.00	0.00	0.00	0.00	0.00	0.00	0.00	0.00	0.00						
95	0.00	0.00	0.00	0.00	0.00	0.00	0.00	0.00	0.00	0.00	0.00	0.00						
100	0.00	0.00	0.00	0.00	0.00	0.00	0.00	0.00	0.00	0.00	0.00	0.00						
105	0.00	0.00	0.00	0.00	0.00	0.00	0.00	0.00	0.00	0.00	0.00	0.00						
110	0.00	0.00	0.00	0.00	0.00	0.00	0.00	0.00	0.00	0.00	0.00	0.00						
115	0.00	0.00	0.00	0.00	0.00	0.00	0.00	0.00	0.00	0.00	0.00	0.00						
120	0.00	0.00	0.00	0.00	0.00	0.00	0.00	0.00	0.00	0.00	0.00	0.00						
125	0.00	0.00	0.00	0.00	0.00	0.00	0.00	0.00	0.00	0.00	0.00	0.00						
130	0.00	0.00	0.00	0.00	0.00	0.00	0.00	0.00	0.00	0.00	0.00	0.00						
135	0.00	0.00	0.00	0.00	0.00	0.00	0.00	0.00	0.00	0.00	0.00	0.00						
140	0.00	0.00	0.00	0.00	0.00	0.00	0.00	0.00	0.00	0.00	0.00	0.00						
145	0.00	0.00	0.00	0.00	0.00	0.00	0.00	0.00	0.00	0.00	0.00	0.00						
150	0.00	0.00	0.00	0.00	0.00	0.00	0.00	0.00	0.00	0.00	0.00	0.00						
155	0.00	0.00	0.00	0.00	0.00	0.00	0.00	0.00	0.00	0.00	0.00	0.00						
160	0.00	0.00	0.00	0.00	0.00	0.00	0.00	0.00	0.00	0.00	0.00	0.00						
165	0.00	0.00	0.00	0.00	0.00	0.00	0.00	0.00	0.00	0.00	0.00	0.00						
170	0.00	0.00	0.00	0.00	0.00	0.00	0.00	0.00	0.00	0.00	0.00	0.00						
175	0.00	0.00	0.00	0.00	0.00	0.00	0.00	0.00	0.00	0.00	0.00	0.00						
180	0.00	0.00	0.00	0.00	0.00	0.00	0.00	0.00	0.00	0.00	0.00	0.00						

C Range: 0 - 360DEG

C Interval: For a lens beam angle of 60°

Test Speed: HIGH

Temperature: 77.54°F

Operators: zoe

Test Date: 2024-8-21

γ Range: 0 - 180DEG

γ Interval: 1.0DEG

Test System: EVERFINE GO-SPEX500_V1 SYSTEM V2.00.461

Humidity: 65.0%

Test Distance: 124.409" [K=1.0000]

Remarks: LAMP: BXRH-30G10T0-G-83 Ra: 90

LENS: PM-1084C 50R

NO DRIVER: 500mA

30minutes warm-up