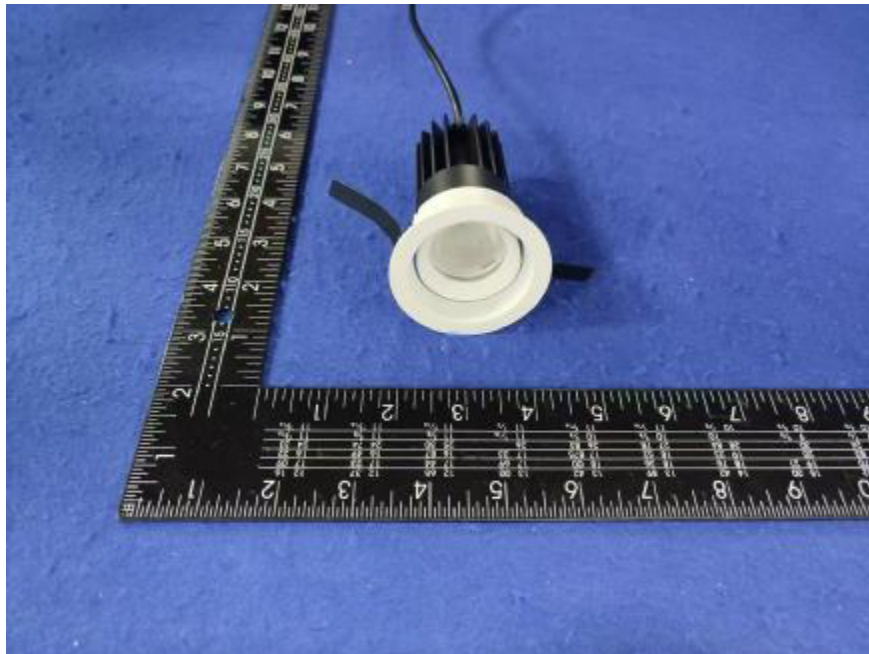


Photometric report for Flanged and Flangeless Trim



Light Output Ratio:	86.6%	
Luminaire Power:	8.823 W	
SHR Nominal:	0.50	Calculated using the TM5
SHR Maximum:	0.65	fine grid method.

C Range: 0 - 360DEG
C Interval: For a lens beam angle of 36°
Test Speed: HIGH
Temperature: 77.54°F
Operators: zoe
Test Date: 2024-8-21

γ Range: 0 - 180DEG
γ Interval: 1.0DEG
Test System: EVERFINE GO-SPEX500_V1 SYSTEM V2.00.461
Humidity: 65.0%
Test Distance: 124.409" [K=1.0000]
Remarks: LAMP: BXRH-30G10T0-G-83 Ra: 90
LENS: PM-1084B 36R
NO DRIVER: 500mA
30minutes warm-up

LUMINOUS INTENSITY DISTRIBUTION DIAGRAM

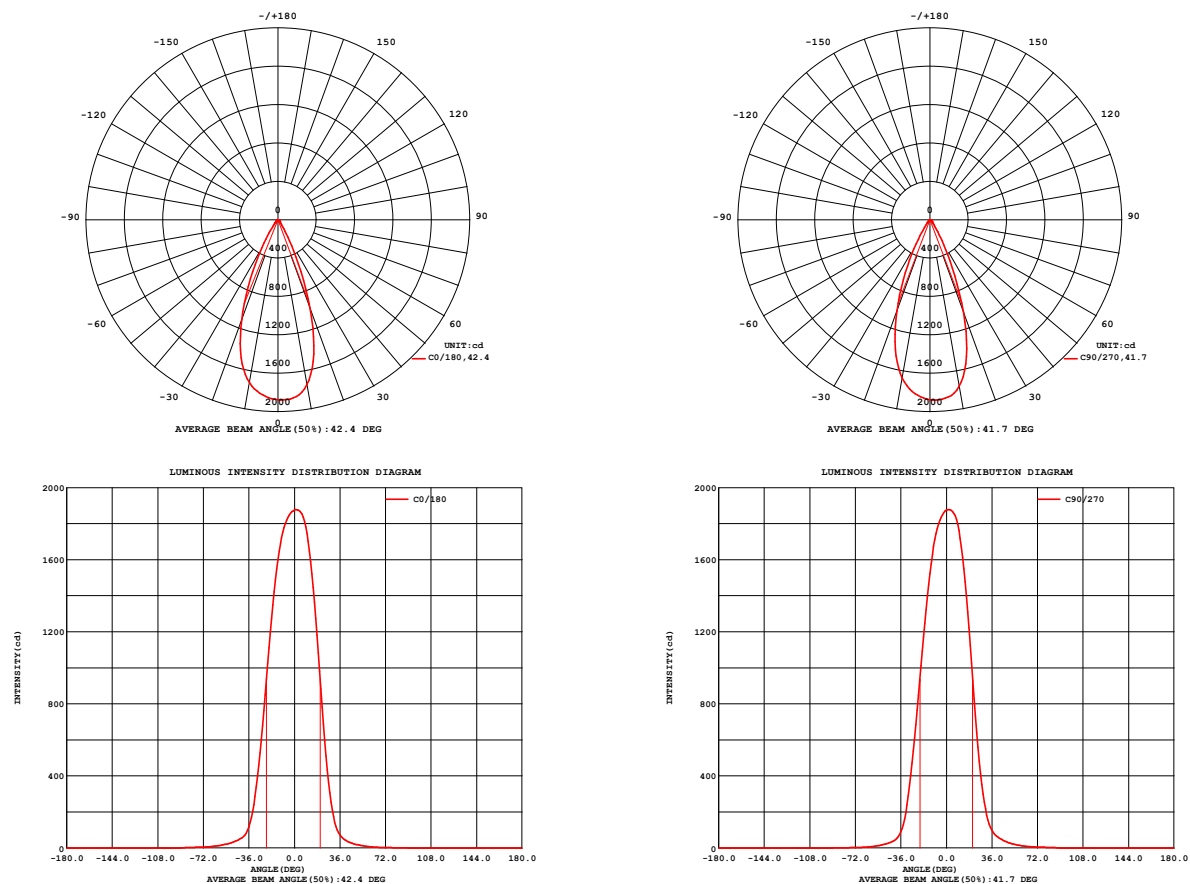


Fig. C0/C180

Fig. C90/C270

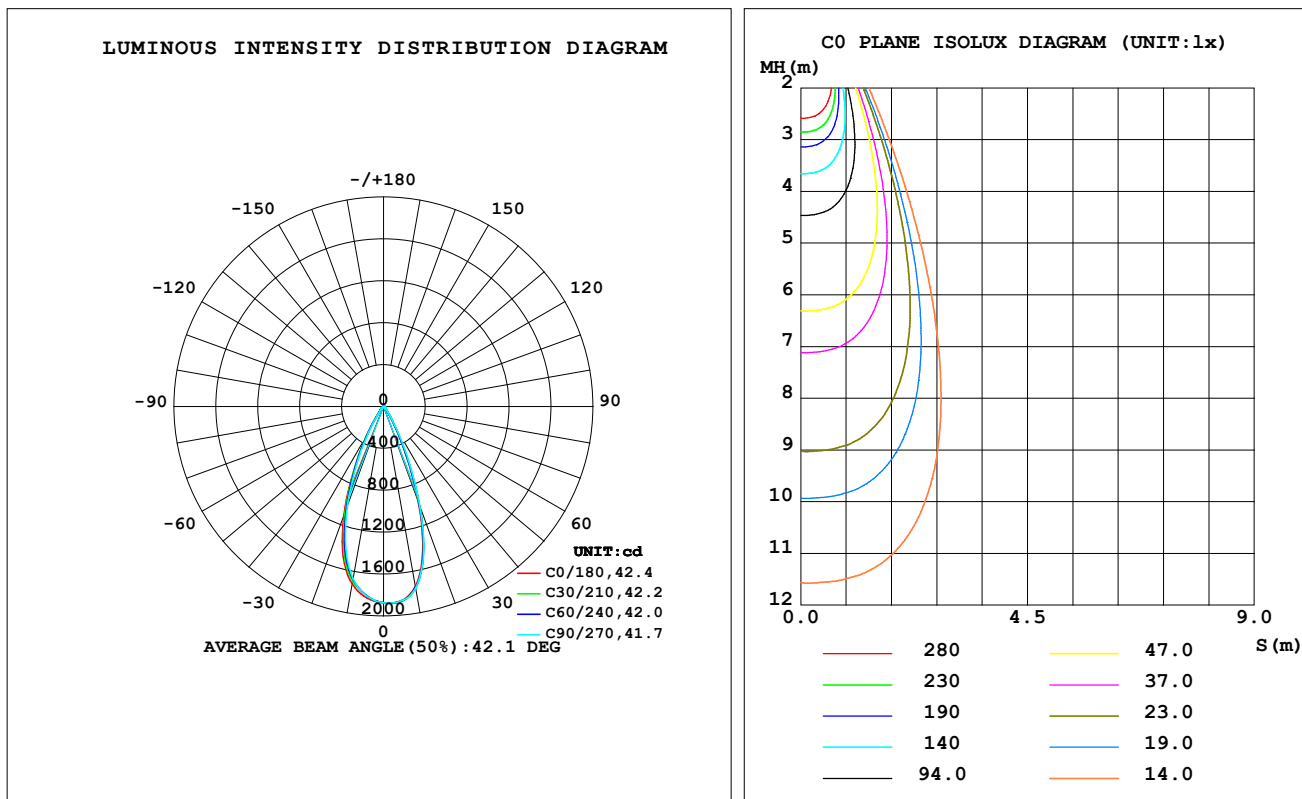
C Range: 0 - 360DEG
 C Interval: For a lens beam angle of 36°
 Test Speed: HIGH
 Temperature: 77.54°F
 Operators: zoe
 Test Date: 2024-8-21

γ Range: 0 - 180DEG
 γ Interval: 1.0DEG
 Test System: EVERFINE GO-SPEX500_V1 SYSTEM V2.00.461
 Humidity: 65.0%
 Test Distance: 124.409" [K=1.0000]
 Remarks: LAMP: BXRH-30G10T0-G-83 Ra: 90
 LENS: PM-1084B 36R
 NO DRIVER: 500mA
 30minutes warm-up

LUMINAIRE PHOTOMETRIC TEST REPORT

Test:U:17.647V I:0.5000A P:8.8235W PF:1.0000 Freq:49.99Hz Lamp Flux:1124.6x1 lm		
NAME: CTL-MM-1.5-30K-36-RD-AD-OPL-SG	TYPE:	WEIGHT:
SPEC.: 3000K	DIM.:	SERIAL No.: 2408211146
MFR.: MERCURY LIGHTING	SUR.: 0.001589625m2	Shielding Angle:

DATA OF LAMP		PHOTOMETRIC DATA Eff: 110.36 lm/W			
MODEL	Brideglux	I _{max} (cd)	1881	S/MH (C0/180)	0.68
NOMINAL POWER (W)	9	LOR (%)	86.6	S/MH (C90/270)	0.65
RATED VOLTAGE (V)	18	TOTAL FLUX (lm)	973.74	η UP, DN (C0-180)	0.0, 43.2
NOMINAL FLUX (lm)	1124.6	CIE CLASS	DIRECT	η UP, DN (C180-360)	0.0, 43.4
LAMPS INSIDE	1	η up (%)	0.0	CIBSE SHR NOM	0.50
TEST VOLTAGE (V)	18	η down (%)	86.6	CIBSE SHR MAX	0.65



C Range: 0 - 360DEG

C Interval: For a lens beam angle of 36°

Test Speed: HIGH

Temperature: 77.54°F

Operators: zoe

Test Date: 2024-8-21

γ Range: 0 - 180DEG

γ Interval: 1.0DEG

Test System: EVERFINE GO-SPEX500_V1 SYSTEM V2.00.461

Humidity: 65.0%

Test Distance: 124.409" [K=1.0000]

Remarks: LAMP: BXRH-30G10T0-G-83 Ra: 90

LENS: PM-1084B 36R

NO DRIVER: 500mA

30minutes warm-up

ZONAL FLUX DIAGRAM

ZONAL FLUX DIAGRAM:

γ	C0	C45	C90	C135	C180	C225	C270	C315	γ	Φ zone	Φ total	%lum,lamp
10	1745	1759	1761	1751	1722	1688	1674	1722	0- 10	172.6	172.6	17.7,15.4
20	981.4	1005	1027	1092	1110	1057	1012	1001	10- 20	395.2	567.8	58.3,50.5
30	210.1	228.1	253.5	302.5	338.6	334.1	288.9	239.8	20- 30	274.0	841.7	86.4,74.8
40	45.81	55.23	64.63	66.54	64.21	57.06	47.09	43.32	30- 40	79.20	920.9	94.6,81.9
50	17.94	21.95	27.26	29.95	28.22	23.12	18.34	16.76	40- 50	27.88	948.8	97.4,84.4
60	6.788	9.260	12.22	14.02	12.88	9.486	6.613	5.847	50- 60	13.88	962.7	98.9,85.6
70	2.877	4.067	5.572	6.197	5.605	4.015	2.811	2.465	60- 70	6.287	969.0	99.5,86.2
80	1.389	2.304	3.331	3.737	3.255	2.213	1.384	1.101	70- 80	3.335	972.3	99.9,86.5
90	0	0	0	0	0	0	0	0	80- 90	1.403	973.7	100,86.6
100	0	0	0	0	0	0	0	0	90-100	0	973.7	100,86.6
110	0	0	0	0	0	0	0	0	100-110	0	973.7	100,86.6
120	0	0	0	0	0	0	0	0	110-120	0	973.7	100,86.6
130	0	0	0	0	0	0	0	0	120-130	0	973.7	100,86.6
140	0	0	0	0	0	0	0	0	130-140	0	973.7	100,86.6
150	0	0	0	0	0	0	0	0	140-150	0	973.7	100,86.6
160	0	0	0	0	0	0	0	0	150-160	0	973.7	100,86.6
170	0	0	0	0	0	0	0	0	160-170	0	973.7	100,86.6
180	0	0	0	0	0	0	0	0	170-180	0	973.7	100,86.6
DEG	LUMINOUS INTENSITY:cd									UNIT:lm		

C Range: 0 - 360DEG

C Interval:For a lens beam angle of 36°

Test Speed: HIGH

Temperature:77.54°F

Operators:zoe

Test Date:2024-8-21

 γ Range: 0 - 180DEG

 γ Interval: 1.0DEG

Test System:EVERFINE GO-SPEX500_V1 SYSTEM V2.00.461

Humidity:65.0%

Test Distance:124.409" [K=1.0000]

Remarks: LAMP:BXRH-30G10T0-G-83 Ra:90

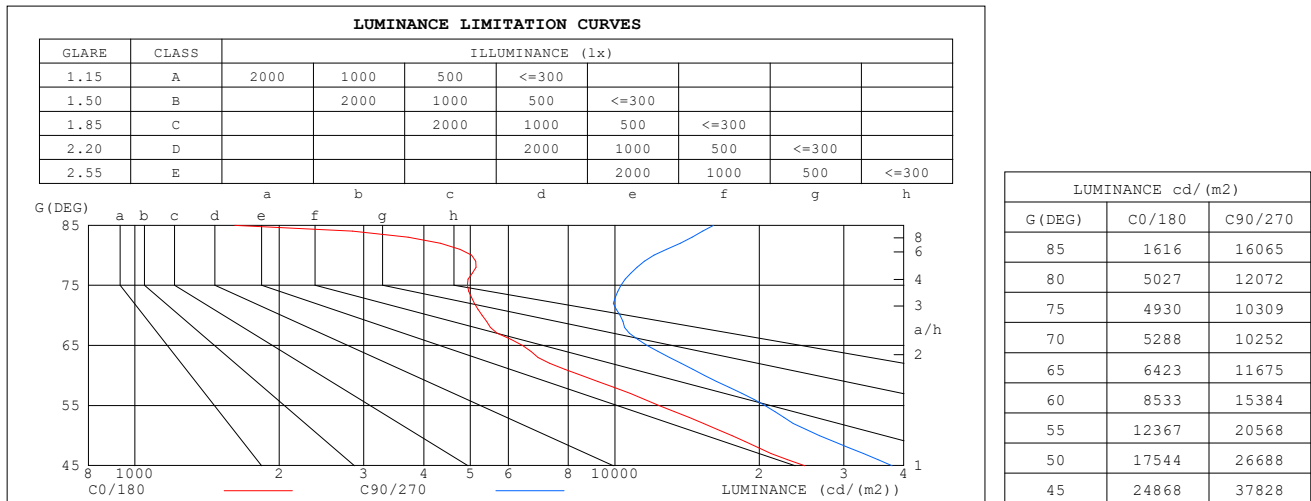
LENS:PM-1084B 36R

NO DRIVER:500mA

30minutes warm-up

LUMINANCE LIMITATION CURVES

Test:U:17.647V I:0.5000A P:8.8235W PF:1.0000 Freq:49.99Hz Lamp Flux:1124.6x1 lm		
NAME: CTL-MM-1.5-30K-36-RD-AD-OPL-SG	TYPE:	WEIGHT:
SPEC.: 3000K	DIM.:	SERIAL No.: 2408211146
MFR.: MERCURY LIGHTING	SUR.: 0.001589625m2	Shielding Angle:



C Range: 0 - 360DEG

C Interval: For a lens beam angle of 36°

Test Speed: HIGH

Temperature: 77.54°F

Operators: zoe

Test Date: 2024-8-21

γ Range: 0 - 180DEG

γ Interval: 1.0DEG

Test System: EVERFINE GO-SPEX500_V1 SYSTEM V2.00.461

Humidity: 65.0%

Test Distance: 124.409" [K=1.0000]

Remarks: LAMP: BXRH-30G10T0-G-83 Ra: 90

LENS: PM-1084B 36R

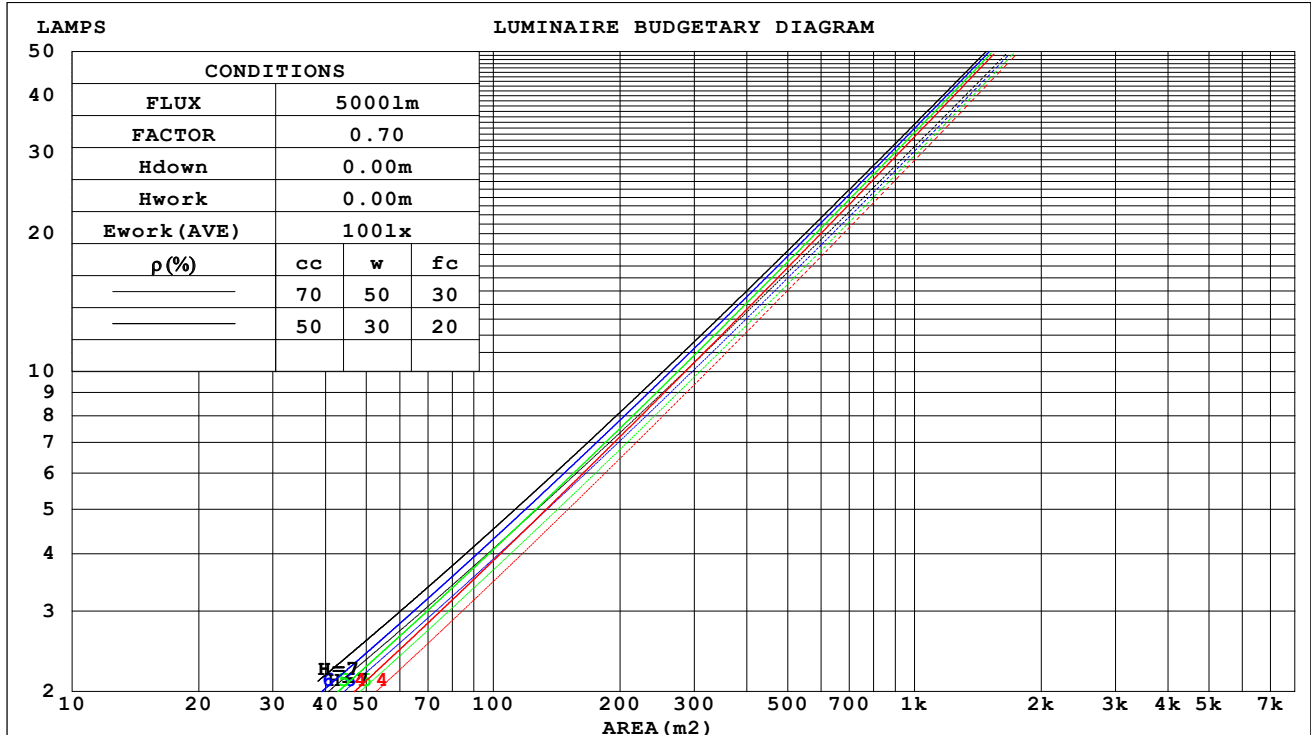
NO DRIVER: 500mA

30minutes warm-up

CU AND LUMINAIRE BUDGETARY ESTIMATE DIAGRAM

Test:U:17.647V I:0.5000A P:8.8235W PF:1.0000 Freq:49.99Hz Lamp Flux:1124.6x1 lm		
NAME: CTL-MM-1.5-30K-36-RD-AD-OPL-SG	TYPE:	WEIGHT:
SPEC.: 3000K	DIM.:	SERIAL No.: 2408211146
MFR.: MERCURY LIGHTING	SUR.: 0.001589625m2	Shielding Angle:

pcc	80%			70%			50%			30%			10%			0
pw	50%	30%	10%	50%	30%	10%	50%	30%	10%	50%	30%	10%	50%	30%	10%	0
pfc	20%			20%			20%			20%			20%			0
RCR	RCR:Room Cavity Ratio															



C Range: 0 - 360DEG
 C Interval: For a lens beam angle of 36°
 Test Speed: HIGH
 Temperature: 77.54°F
 Operators: zoe
 Test Date: 2024-8-21

γ Range: 0 - 180DEG
 γ Interval: 1.0DEG
 Test System: EVERFINE GO-SPEX500_V1 SYSTEM V2.00.461
 Humidity: 65.0%
 Test Distance: 124.409" [K=1.0000]
 Remarks: LAMP: BXRH-30G10T0-G-83 Ra:90
 LENS: PM-1084B 36R
 NO DRIVER: 500mA
 30minutes warm-up

WEC AND CCEC

Test:U:17.647V I:0.5000A P:8.8235W PF:1.0000 Freq:49.99Hz Lamp Flux:1124.6x1 lm		
NAME: CTL-MM-1.5-30K-36-RD-AD-OPL-SG	TYPE:	WEIGHT:
SPEC.: 3000K	DIM.:	SERIAL No.: 2408211146
MFR.: MERCURY LIGHTING	SUR.: 0.001589625m2	Shielding Angle:

pcc	80%			70%			50%			30%			10%			0
pw	50%	30%	10%	50%	30%	10%	50%	30%	10%	50%	30%	10%	50%	30%	10%	0
pfc	20%			20%			20%			20%			20%			0
RCR	RCR:Room Cavity Ratio						Wall Exitance Coefficients(WEC)									
0.0																
1.0	.141	.080	.025	.136	.077	.025	.125	.072	.023	.115	.066	.021	.106	.061	.020	
2.0	.133	.073	.022	.128	.071	.022	.119	.066	.021	.111	.062	.019	.103	.058	.018	
3.0	.125	.067	.020	.121	.065	.020	.114	.062	.019	.107	.058	.018	.100	.055	.017	
4.0	.118	.062	.018	.115	.060	.018	.108	.058	.017	.102	.055	.017	.097	.053	.016	
5.0	.112	.057	.017	.109	.056	.016	.104	.054	.016	.098	.052	.015	.093	.050	.015	
6.0	.107	.054	.015	.104	.053	.015	.099	.051	.015	.095	.049	.014	.090	.048	.014	
7.0	.102	.050	.014	.099	.050	.014	.095	.048	.014	.091	.047	.014	.087	.045	.013	
8.0	.097	.048	.013	.095	.047	.013	.091	.046	.013	.088	.044	.013	.084	.043	.013	
9.0	.093	.045	.013	.091	.045	.012	.088	.043	.012	.085	.042	.012	.082	.041	.012	
10.0	.089	.043	.012	.088	.042	.012	.085	.041	.012	.082	.041	.012	.079	.040	.011	

pcc	80%			70%			50%			30%			10%			0
pw	50%	30%	10%	50%	30%	10%	50%	30%	10%	50%	30%	10%	50%	30%	10%	0
pfc	20%			20%			20%			20%			20%			0
RCR	RCR:Room Cavity Ratio						Ceiling Cavity Exitance Coefficients(CCEC)									
0.0	.165	.165	.165	.141	.141	.141	.096	.096	.096	.055	.055	.055	.018	.018	.018	
1.0	.147	.136	.126	.126	.117	.109	.086	.080	.075	.050	.047	.044	.016	.015	.014	
2.0	.133	.115	.099	.114	.099	.086	.078	.068	.060	.045	.040	.035	.014	.013	.011	
3.0	.122	.098	.080	.104	.085	.069	.072	.059	.048	.041	.034	.029	.013	.011	.009	
4.0	.112	.085	.065	.096	.074	.056	.066	.051	.040	.038	.030	.024	.012	.010	.008	
5.0	.104	.075	.054	.089	.065	.047	.061	.045	.033	.036	.027	.020	.011	.009	.006	
6.0	.097	.067	.045	.083	.058	.039	.057	.040	.028	.033	.024	.017	.011	.008	.005	
7.0	.091	.060	.038	.078	.052	.033	.054	.036	.024	.031	.021	.014	.010	.007	.005	
8.0	.085	.054	.033	.074	.047	.029	.051	.033	.020	.030	.020	.012	.010	.006	.004	
9.0	.081	.050	.029	.070	.043	.025	.048	.030	.018	.028	.018	.011	.009	.006	.004	
10.0	.077	.046	.025	.066	.040	.022	.046	.028	.016	.027	.017	.009	.009	.005	.003	

C Range: 0 - 360DEG

C Interval:For a lens beam angle of 36°

Test Speed: HIGH

Temperature:77.54°F

Operators:zoe

Test Date:2024-8-21

γ Range: 0 - 180DEG

γ Interval: 1.0DEG

Test System:EVERFINE GO-SPEX500_V1 SYSTEM V2.00.461

Humidity:65.0%

Test Distance:124.409" [K=1.0000]

Remarks: LAMP:BXRH-30G10T0-G-83 Ra:90

LENS:PM-1084B 36R

NO DRIVER:500mA

30minutes warm-up

UGR(Unified Glare Rating) Table

Test:U:17.647V I:0.5000A P:8.8235W PF:1.0000 Freq:49.99Hz Lamp Flux:1124.6x1 lm											
NAME: CTL-MM-1.5-30K-36-RD-AD-OPL-SG						TYPE:		WEIGHT:			
SPEC.: 3000K						DIM.:		SERIAL No.: 2408211146			
MFR.: MERCURY LIGHTING						SUR.: 0.001589625m2		Shielding Angle:			
ceiling/cavity	0.7	0.7	0.5	0.5	0.3	0.7	0.7	0.5	0.5	0.3	
walls	0.5	0.3	0.5	0.3	0.3	0.5	0.3	0.5	0.3	0.3	
working plane	0.2	0.2	0.2	0.2	0.2	0.2	0.2	0.2	0.2	0.2	
Room dimensions		Viewed crosswise					Viewed endwise				
x = 2H y = 2H	15.7	16.5	15.9	16.7	16.8	17.2	18.0	17.4	18.2	18.3	
	3H	15.7	16.5	16.0	16.7	16.9	17.4	18.2	17.6	18.4	18.5
	4H	15.8	16.5	16.0	16.7	16.9	17.5	18.2	17.8	18.5	18.7
	6H	15.8	16.5	16.1	16.7	16.9	17.7	18.4	18.0	18.6	18.9
	8H	15.8	16.4	16.1	16.7	16.9	17.8	18.5	18.1	18.7	19.0
	12H	15.7	16.4	16.1	16.6	16.9	18.0	18.6	18.3	18.9	19.1
4H	2H	15.7	16.4	16.0	16.6	16.9	17.1	17.8	17.4	18.1	18.3
	3H	15.8	16.5	16.1	16.7	17.0	17.4	18.0	17.7	18.3	18.6
	4H	15.9	16.5	16.3	16.8	17.1	17.6	18.2	18.0	18.5	18.8
	6H	16.0	16.5	16.4	16.8	17.2	17.9	18.4	18.3	18.7	19.1
	8H	16.0	16.5	16.4	16.9	17.2	18.1	18.6	18.5	18.9	19.3
	12H	16.0	16.4	16.4	16.8	17.2	18.3	18.8	18.7	19.1	19.5
8H	4H	15.9	16.4	16.3	16.8	17.1	17.6	18.0	18.0	18.4	18.8
	6H	16.1	16.5	16.6	16.9	17.3	18.0	18.4	18.4	18.8	19.2
	8H	16.2	16.5	16.7	17.0	17.4	18.3	18.6	18.7	19.0	19.5
	12H	16.2	16.5	16.7	16.9	17.4	18.6	18.9	19.1	19.3	19.8
12H	4H	15.9	16.4	16.3	16.7	17.1	17.5	18.0	17.9	18.3	18.7
	6H	16.2	16.5	16.6	16.9	17.4	18.0	18.3	18.4	18.7	19.2
	8H	16.3	16.6	16.7	17.0	17.5	18.3	18.6	18.8	19.0	19.5
Variations with the observer position at spacings(CIE Pub.117):											
S = 1.0H	+ 1.3 / - 2.1					+ 1.3 / - 1.3					
1.5H	+ 2.0 / - 1.6					+ 2.3 / - 1.2					
2.0H	+ 2.2 / - 1.9					+ 2.4 / - 1.5					

CIE Pub.117, 1125 lm Total Lamp Luminous Flux Correct (8log(F/F0) = 0.4)
 Area: 0.00158963 m2

C Range: 0 - 360DEG

C Interval:For a lens beam angle of 36°

Test Speed: HIGH

Temperature:77.54°F

Operators:zoe

Test Date:2024-8-21

γ Range: 0 - 180DEG

γ Interval: 1.0DEG

Test System:EVERFINE GO-SPEX500_V1 SYSTEM V2.00.461

Humidity:65.0%

Test Distance:124.409" [K=1.0000]

Remarks: LAMP:BXRH-30G10T0-G-83 Ra:90

LENS:PM-1084B 36R

NO DRIVER:500mA

30minutes warm-up

UTILIZATION FACTORS TABLE

Test:U:17.647V I:0.5000A P:8.8235W PF:1.0000 Freq:49.99Hz Lamp Flux:1124.6x1 lm		
NAME: CTL-MM-1.5-30K-36-RD-AD-OPL-SG	TYPE:	WEIGHT:
SPEC.: 3000K	DIM.:	SERIAL No.: 2408211146
MFR.: MERCURY LIGHTING	SUR.: 0.001589625m2	Shielding Angle:

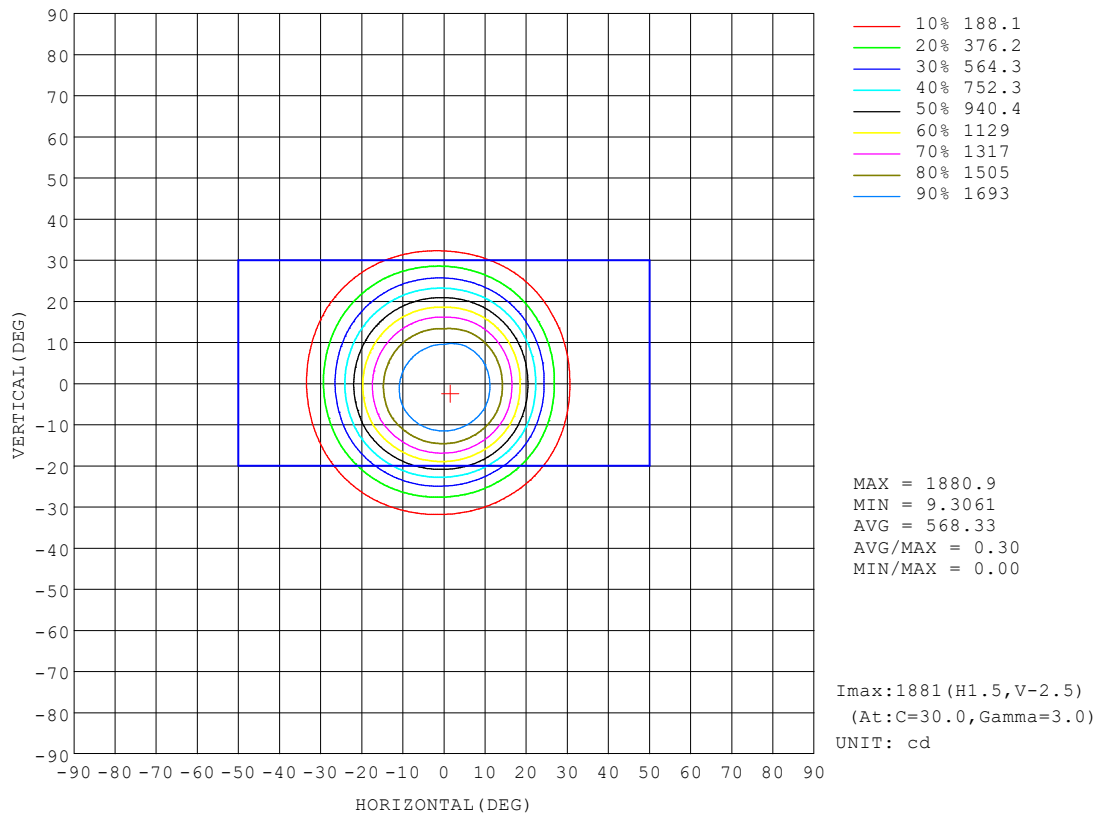
REFLECTANCE										
Ceiling	0.8	0.8	0.8	0.7	0.7	0.7	0.5	0.5	0.5	0
Walls	0.7	0.5	0.3	0.7	0.5	0.3	0.7	0.5	0.3	0
Working plane	0.2	0.2	0.2	0.2	0.2	0.2	0.2	0.2	0.2	0
ROOM INDEX	UTILIZATION FACTORS (PERCENT) $k(RI) \times RCR = 5$									
$k = 0.60$	76	71	68	76	71	68	75	70	68	65
0.80	83	78	75	82	77	74	81	77	74	71
1.00	86	82	79	86	81	78	84	81	78	74
1.25	90	85	82	89	85	82	87	84	81	78
1.50	92	88	85	91	87	85	89	86	84	80
2.00	94	91	88	93	90	87	91	88	86	81
2.50	96	92	90	94	91	89	92	89	87	82
3.00	97	94	92	95	93	91	92	90	89	83
4.00	99	96	94	97	95	93	94	92	91	85
5.00	100	98	96	98	96	95	94	93	92	86
ROOM INDEX	UF(total)									Direct
According to DIN EN 13032-2 2004			Suspended					SHRNOM = 1.25		

C Range: 0 - 360DEG
 C Interval: For a lens beam angle of 36°
 Test Speed: HIGH
 Temperature: 77.54°F
 Operators: zoe
 Test Date: 2024-8-21

γ Range: 0 - 180DEG
 γ Interval: 1.0DEG
 Test System: EVERFINE GO-SPEX500_V1 SYSTEM V2.00.461
 Humidity: 65.0%
 Test Distance: 124.409" [K=1.0000]
 Remarks: LAMP: BXRH-30G10T0-G-83 Ra:90
 LENS: PM-1084B 36R
 NO DRIVER: 500mA
 30minutes warm-up

ISOCANDELA DIAGRAM

Test:U:17.647V I:0.5000A P:8.8235W PF:1.0000 Freq:49.99Hz Lamp Flux:1124.6x1 lm		
NAME: CTL-MM-1.5-30K-36-RD-AD-OPL-SG	TYPE:	WEIGHT:
SPEC.: 3000K	DIM.:	SERIAL No.: 2408211146
MFR.: MERCURY LIGHTING	SUR.: 0.001589625m2	Shielding Angle:

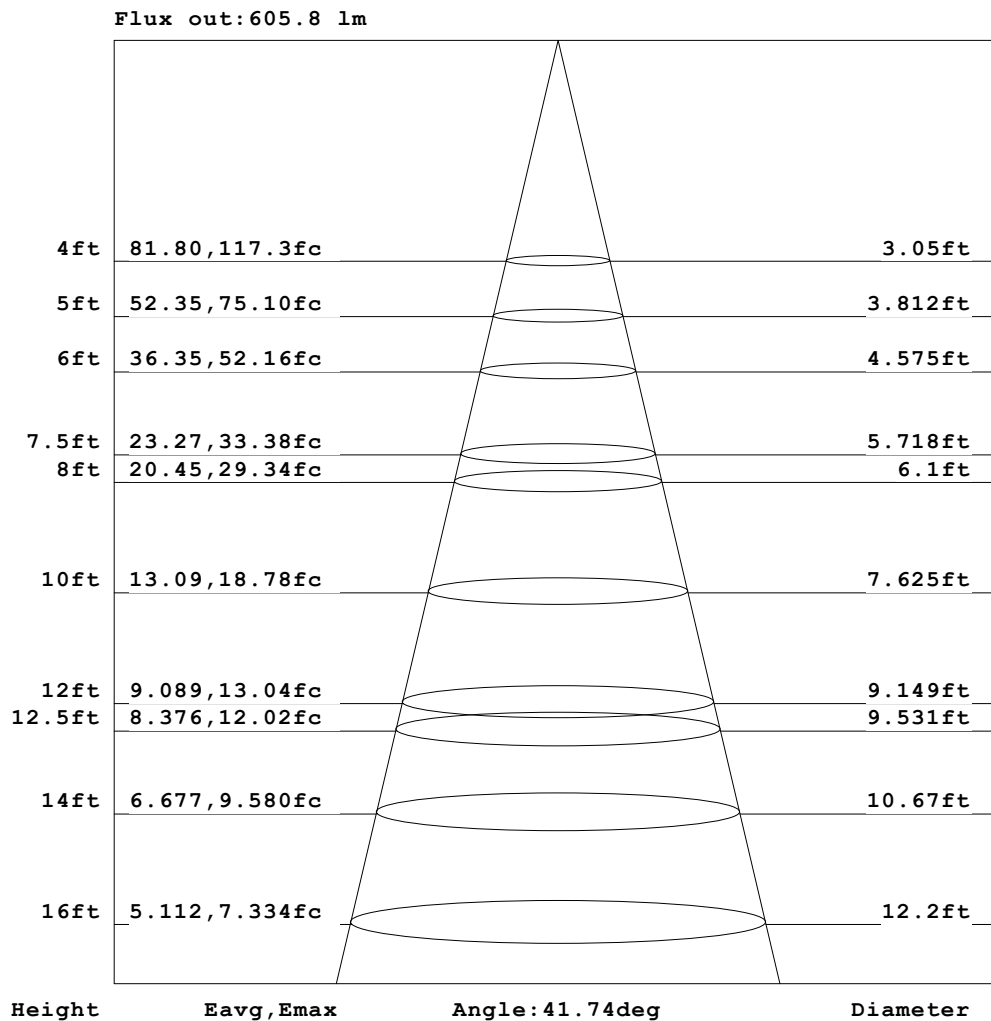


C Range: 0 - 360DEG
 C Interval: For a lens beam angle of 36°
 Test Speed: HIGH
 Temperature: 77.54°F
 Operators: zoe
 Test Date: 2024-8-21

γ Range: 0 - 180DEG
 γ Interval: 1.0DEG
 Test System: EVERFINE GO-SPEX500_V1 SYSTEM V2.00.461
 Humidity: 65.0%
 Test Distance: 124.409" [K=1.0000]
 Remarks: LAMP: BXRH-30G10T0-G-83 Ra: 90
 LENS: PM-1084B 36R
 NO DRIVER: 500mA
 30minutes warm-up

AAI Figure

Test:U:17.647V I:0.5000A P:8.8235W PF:1.0000 Freq:49.99Hz Lamp Flux:1124.6x1 lm		
NAME: CTL-MM-1.5-30K-36-RD-AD-OPL-SG	TYPE:	WEIGHT:
SPEC.: 3000K	DIM.:	SERIAL No.: 2408211146
MFR.: MERCURY LIGHTING	SUR.: 0.001589625m2	Shielding Angle:



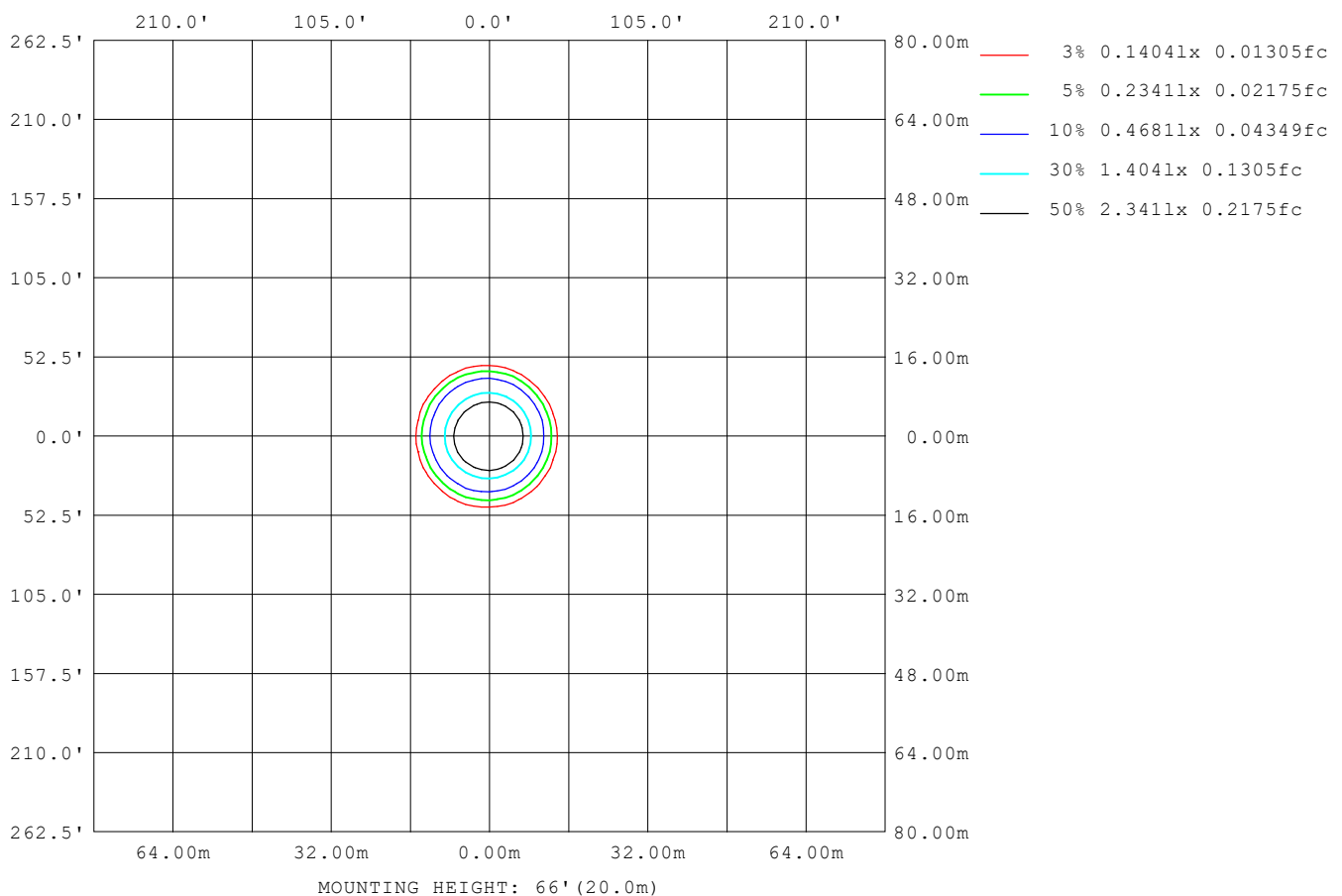
Note: The Curves indicate the illuminated area and the average illumination when the luminaire is at different distance.

C Range: 0 - 360DEG
 C Interval: For a lens beam angle of 36°
 Test Speed: HIGH
 Temperature: 77.54°F
 Operators: zoe
 Test Date: 2024-8-21

γ Range: 0 - 180DEG
 γ Interval: 1.0DEG
 Test System: EVERFINE GO-SPEX500_V1 SYSTEM V2.00.461
 Humidity: 65.0%
 Test Distance: 124.409" [K=1.0000]
 Remarks: LAMP: BXRH-30G10T0-G-83 Ra:90
 LENS: PM-1084B 36R
 NO DRIVER: 500mA
 30minutes warm-up

ISOLUX DIAGRAM

Test: U:17.647V I:0.5000A P:8.8235W PF:1.0000 Freq:49.99Hz Lamp Flux: 1124.6x1 lm		
NAME: CTL-MM-1.5-30K-36-RD-AD-OPL-SG	TYPE:	WEIGHT:
SPEC.: 3000K	DIM.:	SERIAL No.: 2408211146
MFR.: MERCURY LIGHTING	SUR.: 0.001589625m2	Shielding Angle:



C Range: 0 - 360DEG
C Interval: For a lens beam angle of 36°
Test Speed: HIGH
Temperature: 77.54°F
Operators: zoe
Test Date: 2024-8-21

γ Range: 0 - 180DEG
γ Interval: 1.0DEG
Test System: EVERFINE GO-SPEX500_V1 SYSTEM V2.00.461
Humidity: 65.0%
Test Distance: 124.409" [K=1.0000]
Remarks: LAMP: BXRH-30G10T0-G-83 Ra:90
 LENS: PM-1084B 36R
 NO DRIVER: 500mA
 30minutes warm-up

LED Avg.L Report

Test:U:17.647V I:0.5000A P:8.8235W PF:1.0000 Freq:49.99Hz Lamp Flux:1124.6x1 lm		
NAME: CTL-MM-1.5-30K-36-RD-AD-OPL-SG	TYPE:	WEIGHT:
SPEC.: 3000K	DIM.:	SERIAL No.: 2408211146
MFR.: MERCURY LIGHTING	SUR.: 0.001589625m2	Shielding Angle:

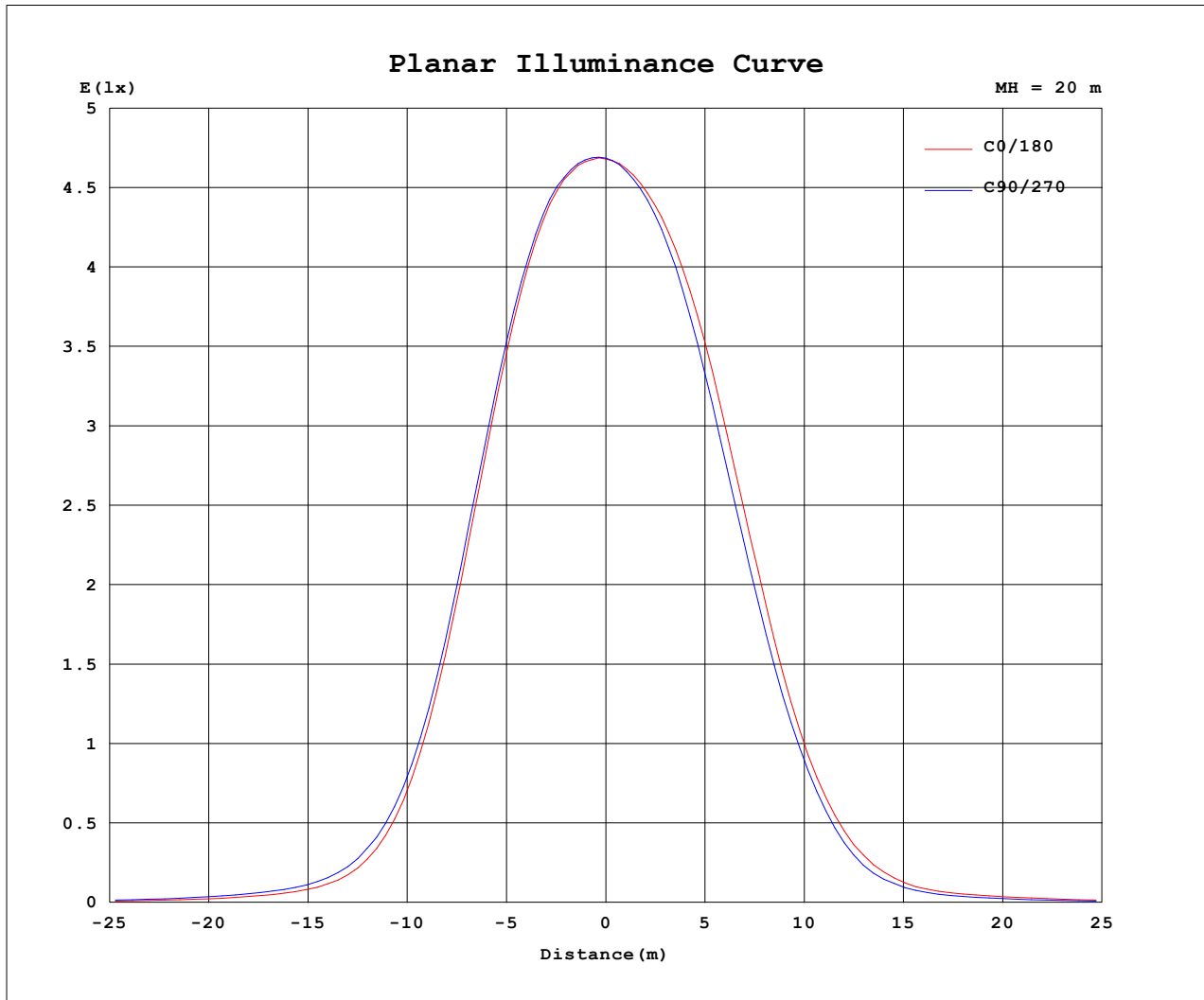
AvgL	cd/m2
L_0~180 (65) av	9352
L_0~180 (75) av	7541
L_0~180 (85) av	9164
L_90~270 (65) av	8912
L_90~270 (75) av	7539
L_90~270 (85) av	9189
L_45 (65) av	9050
L_45 (75) av	7540
L_45 (85) av	9214

Standard: GB/T 29293-2012

C Range: 0 - 360DEG
 C Interval: For a lens beam angle of 36°
 Test Speed: HIGH
 Temperature: 77.54°F
 Operators: zoe
 Test Date: 2024-8-21

γ Range: 0 - 180DEG
 γ Interval: 1.0DEG
 Test System: EVERFINE GO-SPEX500_V1 SYSTEM V2.00.461
 Humidity: 65.0%
 Test Distance: 124.409" [K=1.0000]
 Remarks: LAMP: BXRH-30G10T0-G-83 Ra: 90
 LENS: PM-1084B 36R
 NO DRIVER: 500mA
 30minutes warm-up

Planar Illuminance Curve



C Range: 0 - 360DEG
C Interval: For a lens beam angle of 36°
Test Speed: HIGH
Temperature: 77.54°F
Operators: zoe
Test Date: 2024-8-21

γ Range: 0 - 180DEG
γ Interval: 1.0DEG
Test System: EVERFINE GO-SPEX500_V1 SYSTEM V2.00.461
Humidity: 65.0%
Test Distance: 124.409" [K=1.0000]
Remarks: LAMP: BXRH-30G10T0-G-83 Ra: 90
LENS: PM-1084B 36R
NO DRIVER: 500mA
30minutes warm-up

LUMINOUS DISTRIBUTION INTENSITY DATA

Test:U:17.647V I:0.5000A P:8.8235W PF:1.0000 Freq:49.99Hz Lamp Flux:1124.6x1 lm		
NAME: CTL-MM-1.5-30K-36-RD-AD-OPL-SG	TYPE:	WEIGHT:
SPEC.: 3000K	DIM.:	SERIAL No.: 2408211146
MFR.: MERCURY LIGHTING	SUR.: 0.001589625m2	Shielding Angle:

Table--1

UNIT: cd

C (DEG) γ (DEG)	0	30	60	90	120	150	180	210	240	270	300	330						
0	1874	1874	1874	1874	1874	1874	1874	1874	1874	1874	1874	1874						
5	1862	1872	1870	1866	1856	1850	1833	1815	1815	1818	1841	1852						
10	1745	1762	1757	1761	1755	1746	1722	1696	1680	1674	1713	1730						
15	1446	1474	1471	1477	1492	1510	1488	1457	1426	1395	1427	1440						
20	981	1005	1005	1027	1068	1117	1110	1075	1040	1012	1010	992						
25	511	525	526	559	613	667	679	670	645	610	581	540						
30	210	226	230	253	285	320	339	342	326	289	256	223						
35	86.6	92.7	103	115	126	135	141	138	125	108	94.9	86.9						
40	45.8	51.7	58.7	64.6	67.5	65.5	64.2	60.3	53.8	47.1	44.0	42.6						
45	28.0	31.8	37.5	42.5	45.6	45.1	42.5	36.8	32.3	28.5	26.5	26.0						
50	17.9	20.5	23.4	27.3	29.7	30.2	28.2	24.9	21.3	18.3	16.9	16.6						
55	11.3	13.4	16.1	18.7	20.6	21.1	19.7	17.0	13.9	11.3	10.2	10.2						
60	6.79	8.30	10.2	12.2	13.8	14.2	12.9	10.6	8.37	6.61	5.82	5.87						
65	4.32	5.23	6.37	7.84	8.93	9.17	8.25	6.56	5.05	4.13	3.66	3.71						
70	2.88	3.61	4.53	5.57	6.17	6.23	5.60	4.52	3.51	2.81	2.45	2.48						
75	2.03	2.66	3.46	4.24	4.69	4.68	4.18	3.37	2.57	1.96	1.68	1.70						
80	1.39	1.95	2.66	3.33	3.75	3.73	3.26	2.54	1.89	1.38	1.10	1.10						
85	0.22	0.75	1.45	2.23	2.70	2.75	2.32	1.58	0.87	0.32	0.06	0.05						
90	0.00	0.00	0.00	0.00	0.00	0.00	0.00	0.00	0.00	0.00	0.00	0.00						
95	0.00	0.00	0.00	0.00	0.00	0.00	0.00	0.00	0.00	0.00	0.00	0.00						
100	0.00	0.00	0.00	0.00	0.00	0.00	0.00	0.00	0.00	0.00	0.00	0.00						
105	0.00	0.00	0.00	0.00	0.00	0.00	0.00	0.00	0.00	0.00	0.00	0.00						
110	0.00	0.00	0.00	0.00	0.00	0.00	0.00	0.00	0.00	0.00	0.00	0.00						
115	0.00	0.00	0.00	0.00	0.00	0.00	0.00	0.00	0.00	0.00	0.00	0.00						
120	0.00	0.00	0.00	0.00	0.00	0.00	0.00	0.00	0.00	0.00	0.00	0.00						
125	0.00	0.00	0.00	0.00	0.00	0.00	0.00	0.00	0.00	0.00	0.00	0.00						
130	0.00	0.00	0.00	0.00	0.00	0.00	0.00	0.00	0.00	0.00	0.00	0.00						
135	0.00	0.00	0.00	0.00	0.00	0.00	0.00	0.00	0.00	0.00	0.00	0.00						
140	0.00	0.00	0.00	0.00	0.00	0.00	0.00	0.00	0.00	0.00	0.00	0.00						
145	0.00	0.00	0.00	0.00	0.00	0.00	0.00	0.00	0.00	0.00	0.00	0.00						
150	0.00	0.00	0.00	0.00	0.00	0.00	0.00	0.00	0.00	0.00	0.00	0.00						
155	0.00	0.00	0.00	0.00	0.00	0.00	0.00	0.00	0.00	0.00	0.00	0.00						
160	0.00	0.00	0.00	0.00	0.00	0.00	0.00	0.00	0.00	0.00	0.00	0.00						
165	0.00	0.00	0.00	0.00	0.00	0.00	0.00	0.00	0.00	0.00	0.00	0.00						
170	0.00	0.00	0.00	0.00	0.00	0.00	0.00	0.00	0.00	0.00	0.00	0.00						
175	0.00	0.00	0.00	0.00	0.00	0.00	0.00	0.00	0.00	0.00	0.00	0.00						
180	0.00	0.00	0.00	0.00	0.00	0.00	0.00	0.00	0.00	0.00	0.00	0.00						

C Range: 0 - 360DEG

C Interval: For a lens beam angle of 36°

Test Speed: HIGH

Temperature: 77.54°F

Operators: zoe

Test Date: 2024-8-21

γ Range: 0 - 180DEG

γ Interval: 1.0DEG

Test System: EVERFINE GO-SPEX500_V1 SYSTEM V2.00.461

Humidity: 65.0%

Test Distance: 124.409" [K=1.0000]

Remarks: LAMP: BXRH-30G10T0-G-83 Ra: 90

LENS: PM-1084B 36R

NO DRIVER: 500mA

30minutes warm-up