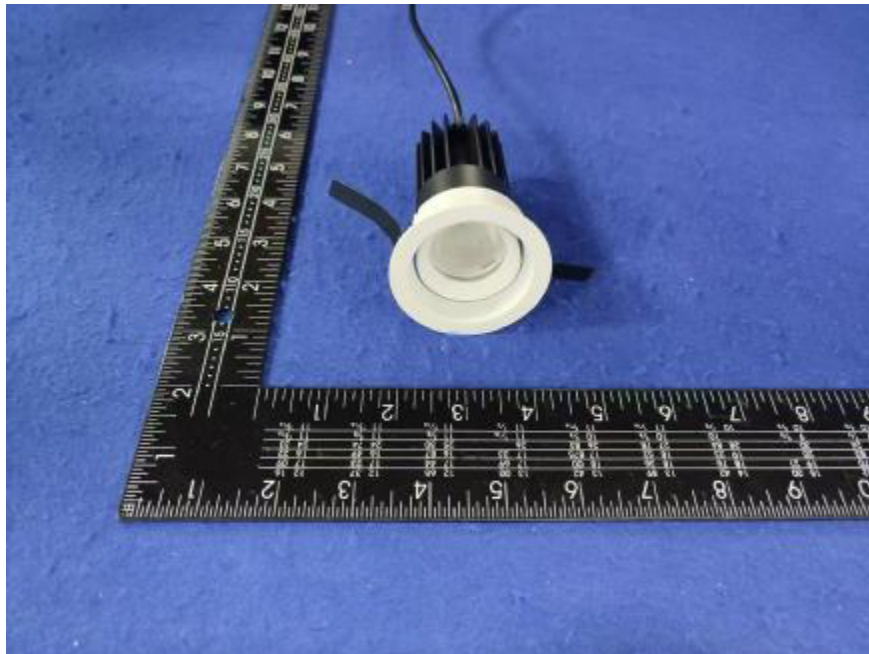


Photometric report for Flanged and Flangeless Trim



Light Output Ratio:	87.4%	
Luminaire Power:	8.824 W	
SHR Nominal:	0.00	Calculated using the TM5
SHR Maximum:	0.30	fine grid method.

C Range: 0 - 360DEG
C Interval: For a lens beam angle of 24°
Test Speed: HIGH
Temperature: 77.54°F
Operators: zoe
Test Date: 2024-8-21

γ Range: 0 - 180DEG
γ Interval: 1.0DEG
Test System: EVERFINE GO-SPEX500_V1 SYSTEM V2.00.461
Humidity: 65.0%
Test Distance: 124.409" [K=1.0000]
Remarks: LAMP: BXRH-30G10T0-G-83 Ra:90
LENS: PM-1084A 24R
NO DRIVER: 500mA
30minutes warm-up

LUMINOUS INTENSITY DISTRIBUTION DIAGRAM

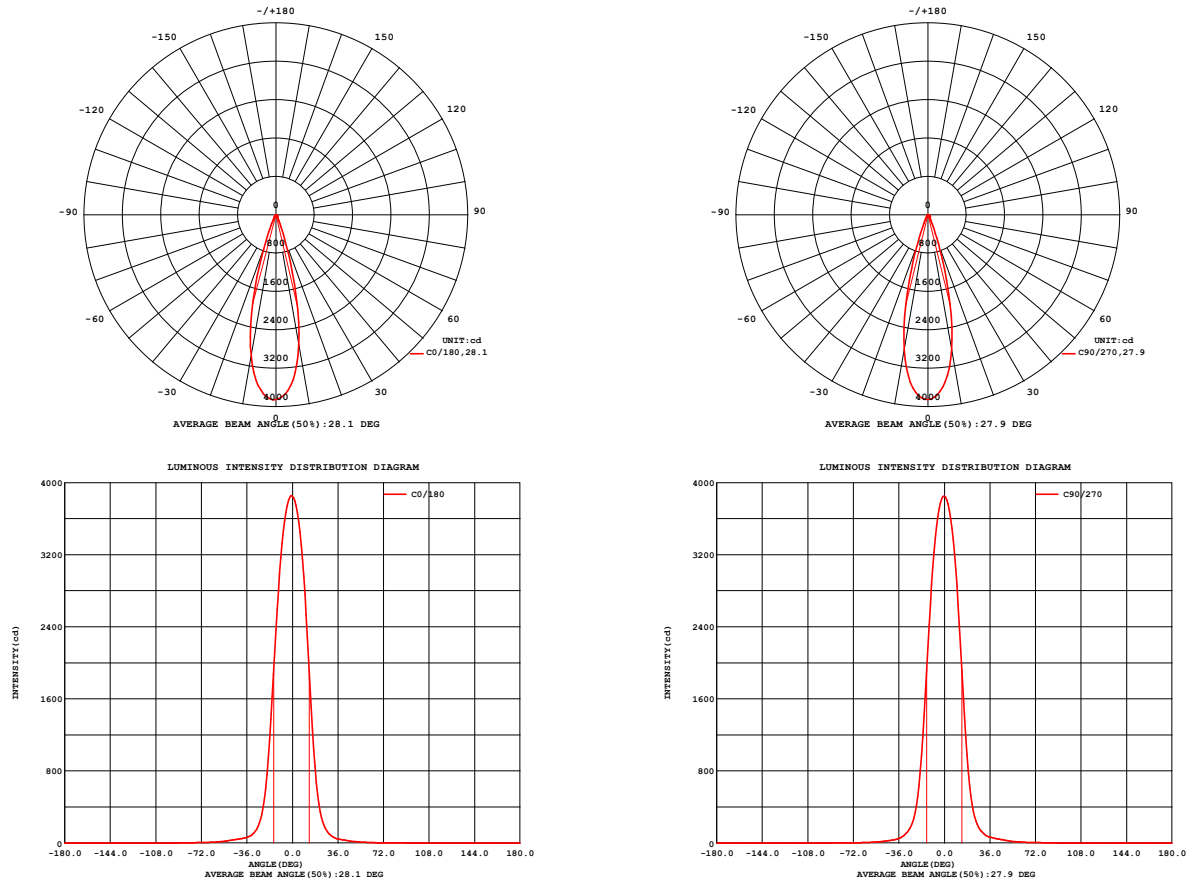


Fig. C0/C180

Fig. C90/C270

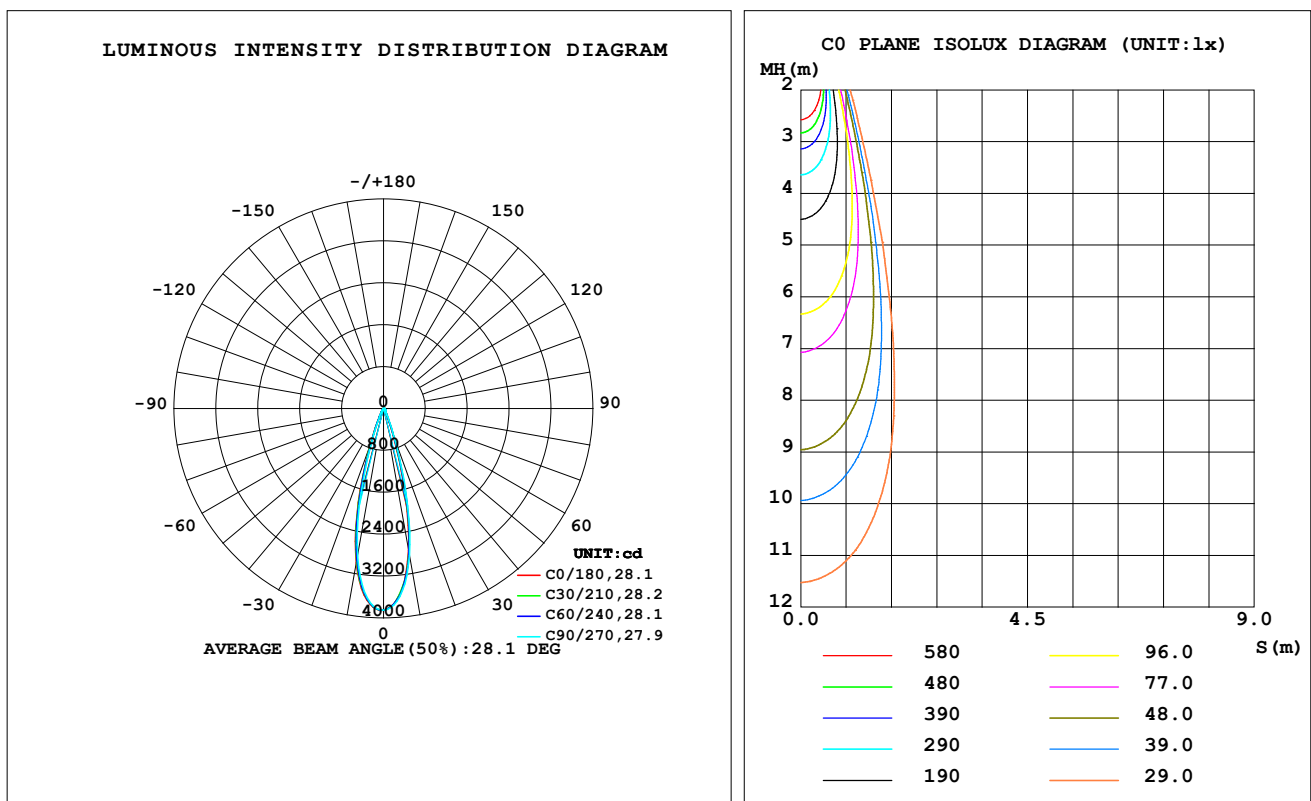
C Range: 0 - 360DEG
C Interval: For a lens beam angle of 24°
Test Speed: HIGH
Temperature: 77.54 °F
Operators: zoe
Test Date: 2024-8-21

γ Range: 0 - 180DEG
γ Interval: 1.0DEG
Test System: EVERFINE GO-SPEX500_V1 SYSTEM V2.00.461
Humidity: 65.0%
Test Distance: 124.409" [K=1.0000]
Remarks: LAMP: BXRH-30G10T0-G-83 Ra: 90
LENS: PM-1084A 24R
NO DRIVER: 500mA
30minutes warm-up

LUMINAIRE PHOTOMETRIC TEST REPORT

Test:U:17.648V I:0.5000A P:8.8240W PF:1.0000 Freq:49.99Hz Lamp Flux:1124.6x1 lm		
NAME: CTL-MM-1.5-30K-24-RD-AD-OPL-SG	TYPE:	WEIGHT:
SPEC.: 3000K	DIM.:	SERIAL No.: 2408211145
MFR.: MERCURY LIGHTING	SUR.: 0.001589625m ²	Shielding Angle:

DATA OF LAMP		PHOTOMETRIC DATA Eff: 111.37 lm/W			
MODEL	Brideglux	I _{max} (cd)	3855	S/MH (C0/180)	0.46
NOMINAL POWER (W)	9	LOR (%)	87.4	S/MH (C90/270)	0.44
RATED VOLTAGE (V)	18	TOTAL FLUX (lm)	982.76	η UP, DN (C0-180)	0.0, 43.5
NOMINAL FLUX (lm)	1124.6	CIE CLASS	DIRECT	η UP, DN (C180-360)	0.0, 43.9
LAMPS INSIDE	1	η up (%)	0.0	CIBSE SHR NOM	0.00
TEST VOLTAGE (V)	18	η down (%)	87.4	CIBSE SHR MAX	0.30



C Range: 0 - 360DEG

C Interval: For a lens beam angle of 24°

Test Speed: HIGH

Temperature: 77.54 °F

Operators: zoe

Test Date: 2024-8-21

γ Range: 0 - 180DEG

γ Interval: 1.0DEG

Test System: EVERFINE GO-SPEX500_V1 SYSTEM V2.00.461

Humidity: 65.0%

Test Distance: 124.409" [K=1.0000]

Remarks: LAMP: BXRH-30G10T0-G-83 Ra: 90

LENS: PM-1084A 24R

NO DRIVER: 500mA

30minutes warm-up

ZONAL FLUX DIAGRAM

ZONAL FLUX DIAGRAM:

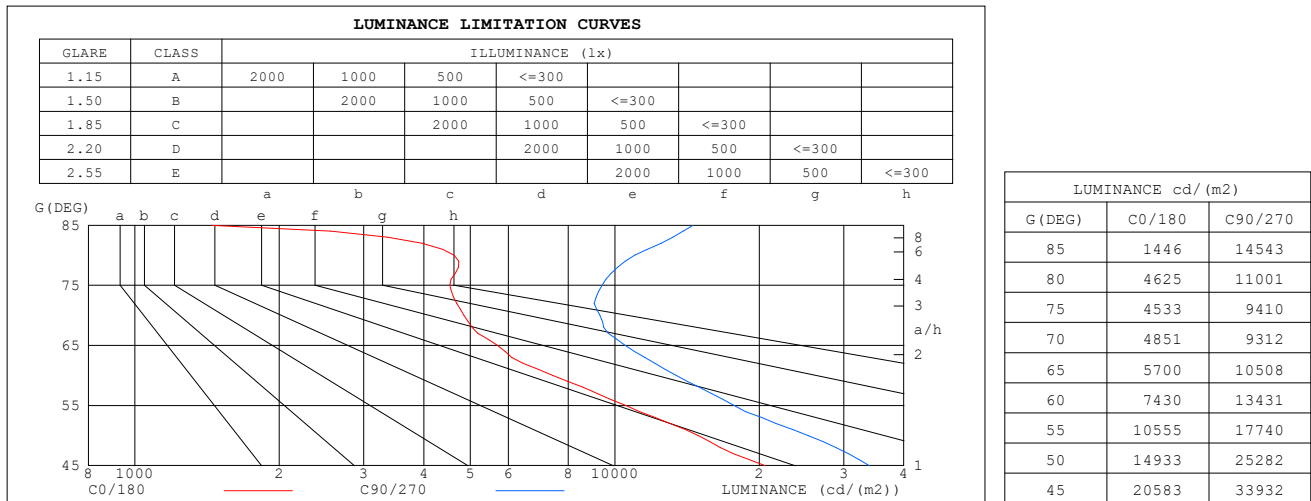
γ	C0	C45	C90	C135	C180	C225	C270	C315	γ	Φ zone	Φ total	%lum,lamp
10	2756	2797	2850	2958	2991	2956	2863	2811	0- 10	321.7	321.7	32.7,28.6
20	539.7	588.0	645.3	730.5	759.1	737.4	636.4	585.0	10- 20	450.3	772.0	78.6,68.6
30	89.51	105.8	117.9	119.2	115.0	119.1	106.8	93.53	20- 30	124.2	896.2	91.2,79.7
40	34.41	42.62	51.14	52.32	49.16	42.26	34.64	32.20	30- 40	40.87	937.1	95.3,83.3
50	15.25	19.09	25.84	28.74	26.41	19.85	15.41	14.18	40- 50	23.68	960.7	97.8,85.4
60	5.901	7.962	10.68	12.22	11.17	8.179	5.950	5.268	50- 60	12.08	972.8	99,86.5
70	2.635	3.706	5.065	5.623	5.080	3.697	2.616	2.285	60- 70	5.613	978.4	99.6,87
80	1.276	2.101	3.038	3.404	2.969	2.041	1.307	1.031	70- 80	3.057	981.5	99.9,87.3
90	0	0	0	0	0	0	0	0	80- 90	1.282	982.8	100,87.4
100	0	0	0	0	0	0	0	0	90-100	0	982.8	100,87.4
110	0	0	0	0	0	0	0	0	100-110	0	982.8	100,87.4
120	0	0	0	0	0	0	0	0	110-120	0	982.8	100,87.4
130	0	0	0	0	0	0	0	0	120-130	0	982.8	100,87.4
140	0	0	0	0	0	0	0	0	130-140	0	982.8	100,87.4
150	0	0	0	0	0	0	0	0	140-150	0	982.8	100,87.4
160	0	0	0	0	0	0	0	0	150-160	0	982.8	100,87.4
170	0	0	0	0	0	0	0	0	160-170	0	982.8	100,87.4
180	0	0	0	0	0	0	0	0	170-180	0	982.8	100,87.4
DEG	LUMINOUS INTENSITY:cd									UNIT:lm		

C Range: 0 - 360DEG
 C Interval:For a lens beam angle of 24°
 Test Speed: HIGH
 Temperature:77.54 °F
 Operators:zoe
 Test Date:2024-8-21

γ Range: 0 - 180DEG
 γ Interval: 1.0DEG
 Test System:EVERFINE GO-SPEX500_V1 SYSTEM V2.00.461
 Humidity:65.0%
 Test Distance:124.409" [K=1.0000]
 Remarks: LAMP:BXRH-30G10T0-G-83 Ra:90
 LENS:PM-1084A 24R
 NO DRIVER:500mA
 30minutes warm-up

LUMINANCE LIMITATION CURVES

Test:U:17.648V I:0.5000A P:8.8240W PF:1.0000 Freq:49.99Hz Lamp Flux:1124.6x1 lm		
NAME: CTL-MM-1.5-30K-24-RD-AD-OPL-SG	TYPE:	WEIGHT:
SPEC.: 3000K	DIM.:	SERIAL No.: 2408211145
MFR.: MERCURY LIGHTING	SUR.: 0.001589625m2	Shielding Angle:



C Range: 0 - 360DEG

C Interval: For a lens beam angle of 24°

Test Speed: HIGH

Temperature: 77.54 °F

Operators: zoe

Test Date: 2024-8-21

γ Range: 0 - 180DEG

γ Interval: 1.0DEG

Test System: EVERFINE GO-SPEX500_V1 SYSTEM V2.00.461

Humidity: 65.0%

Test Distance: 124.409" [K=1.0000]

Remarks: LAMP: BXRH-30G10T0-G-83 Ra: 90

LENS: PM-1084A 24R

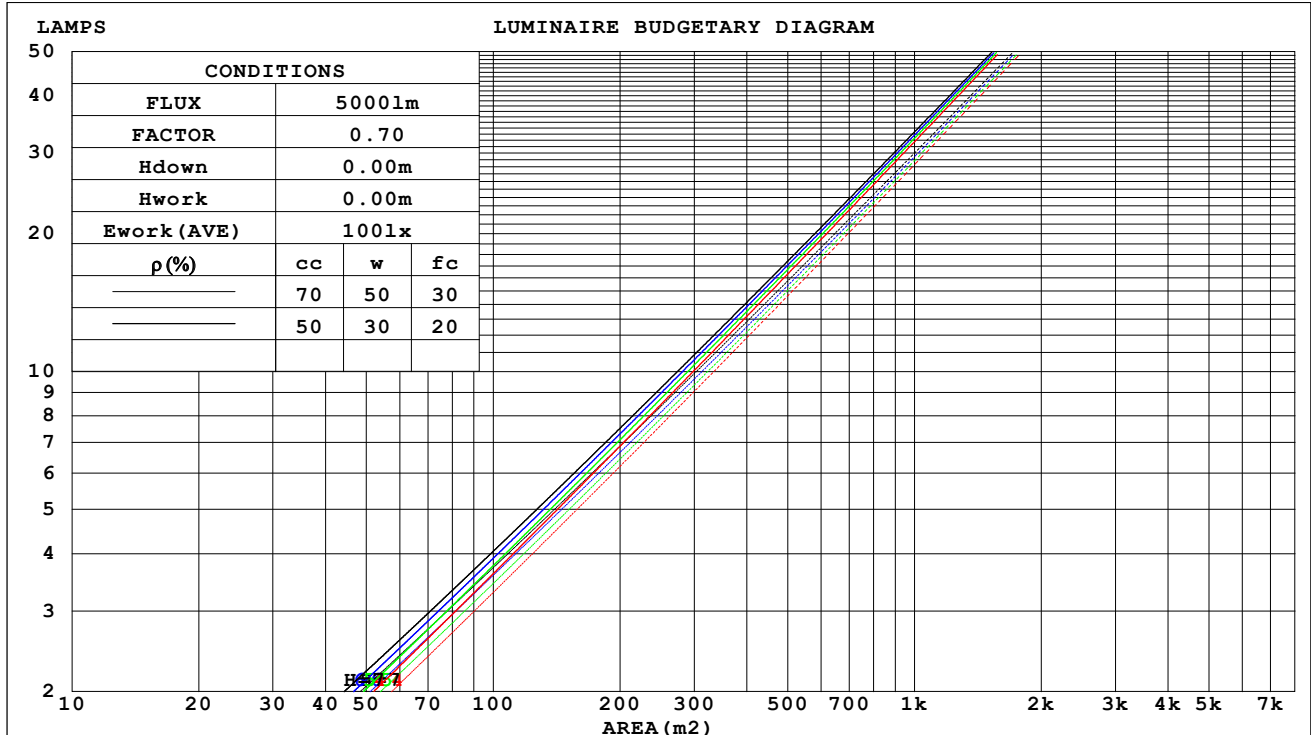
NO DRIVER: 500mA

30minutes warm-up

CU AND LUMINAIRE BUDGETARY ESTIMATE DIAGRAM

Test:U:17.648V I:0.5000A P:8.8240W PF:1.0000 Freq:49.99Hz Lamp Flux:1124.6x1 lm		
NAME: CTL-MM-1.5-30K-24-RD-AD-OPL-SG	TYPE:	WEIGHT:
SPEC.: 3000K	DIM.:	SERIAL No.: 2408211145
MFR.: MERCURY LIGHTING	SUR.: 0.001589625m2	Shielding Angle:

pcc	80%			70%			50%			30%			10%			0
pw	50%	30%	10%	50%	30%	10%	50%	30%	10%	50%	30%	10%	50%	30%	10%	0
pfc	20%			20%			20%			20%			20%			0
RCR	RCR:Room Cavity Ratio															



C Range: 0 - 360DEG

C Interval: For a lens beam angle of 24°

Test Speed: HIGH

Temperature: 77.54 °F

Operators: zoe

Test Date: 2024-8-21

γ Range: 0 - 180DEG

γ Interval: 1.0DEG

Test System: EVERFINE GO-SPEX500_V1 SYSTEM V2.00.461

Humidity: 65.0%

Test Distance: 124.409" [K=1.0000]

Remarks: LAMP: BXRH-30G10T0-G-83 Ra: 90

LENS: PM-1084A 24R

NO DRIVER: 500mA

30minutes warm-up

WEC AND CCEC

Test:U:17.648V I:0.5000A P:8.8240W PF:1.0000 Freq:49.99Hz Lamp Flux:1124.6x1 lm		
NAME: CTL-MM-1.5-30K-24-RD-AD-OPL-SG	TYPE:	WEIGHT:
SPEC.: 3000K	DIM.:	SERIAL No.: 2408211145
MFR.: MERCURY LIGHTING	SUR.: 0.001589625m2	Shielding Angle:

pcc	80%			70%			50%			30%			10%			0
pw	50%	30%	10%	50%	30%	10%	50%	30%	10%	50%	30%	10%	50%	30%	10%	0
pfc	20%			20%			20%			20%			20%			0
RCR	RCR:Room Cavity Ratio						Wall Exitance Coefficients(WEC)									
0.0																
1.0	.127	.072	.023	.121	.069	.022	.110	.063	.020	.100	.058	.019	.091	.053	.017	
2.0	.118	.065	.020	.113	.062	.019	.104	.058	.018	.096	.054	.017	.088	.050	.016	
3.0	.110	.058	.017	.106	.057	.017	.098	.053	.016	.091	.050	.015	.085	.047	.015	
4.0	.103	.053	.016	.099	.052	.015	.093	.049	.015	.087	.047	.014	.082	.044	.014	
5.0	.097	.049	.014	.094	.048	.014	.088	.046	.014	.083	.044	.013	.079	.042	.013	
6.0	.091	.046	.013	.089	.045	.013	.084	.043	.013	.080	.041	.012	.076	.040	.012	
7.0	.087	.043	.012	.084	.042	.012	.080	.041	.012	.077	.039	.011	.073	.038	.011	
8.0	.082	.040	.011	.080	.040	.011	.077	.038	.011	.074	.037	.011	.070	.036	.011	
9.0	.079	.038	.011	.077	.037	.011	.074	.036	.010	.071	.035	.010	.068	.035	.010	
10.0	.075	.036	.010	.074	.036	.010	.071	.035	.010	.068	.034	.010	.066	.033	.009	

pcc	80%			70%			50%			30%			10%			0
pw	50%	30%	10%	50%	30%	10%	50%	30%	10%	50%	30%	10%	50%	30%	10%	0
pfc	20%			20%			20%			20%			20%			0
RCR	RCR:Room Cavity Ratio						Ceiling Cavity Exitance Coefficients(CCEC)									
0.0	.166	.166	.166	.142	.142	.142	.097	.097	.097	.056	.056	.056	.018	.018	.018	
1.0	.148	.138	.129	.126	.118	.111	.086	.081	.077	.050	.047	.045	.016	.015	.014	
2.0	.132	.116	.102	.113	.100	.088	.078	.069	.062	.045	.040	.036	.014	.013	.012	
3.0	.119	.099	.083	.102	.085	.072	.070	.059	.050	.041	.035	.030	.013	.011	.010	
4.0	.109	.086	.068	.093	.074	.059	.064	.052	.042	.037	.030	.025	.012	.010	.008	
5.0	.100	.075	.057	.086	.065	.049	.059	.045	.035	.034	.027	.021	.011	.009	.007	
6.0	.092	.066	.048	.079	.057	.042	.055	.040	.030	.032	.024	.018	.010	.008	.006	
7.0	.085	.059	.041	.073	.051	.036	.051	.036	.025	.029	.021	.015	.010	.007	.005	
8.0	.080	.053	.035	.069	.046	.031	.047	.033	.022	.028	.019	.013	.009	.006	.004	
9.0	.075	.048	.031	.064	.042	.027	.045	.030	.019	.026	.017	.011	.008	.006	.004	
10.0	.070	.044	.027	.061	.039	.024	.042	.027	.017	.025	.016	.010	.008	.005	.003	

C Range: 0 - 360DEG

C Interval:For a lens beam angle of 24°

Test Speed: HIGH

Temperature:77.54 °F

Operators:zoe

Test Date:2024-8-21

γ Range: 0 - 180DEG

γ Interval: 1.0DEG

Test System:EVERFINE GO-SPEX500_V1 SYSTEM V2.00.461

Humidity:65.0%

Test Distance:124.409" [K=1.0000]

Remarks: LAMP:BXRH-30G10T0-G-83 Ra:90

LENS:PM-1084A 24R

NO DRIVER:500mA

30minutes warm-up

UGR(Unified Glare Rating) Table

Test:U:17.648V I:0.5000A P:8.8240W PF:1.0000 Freq:49.99Hz Lamp Flux:1124.6x1 lm											
NAME: CTL-MM-1.5-30K-24-RD-AD-OPL-SG					TYPE:			WEIGHT:			
SPEC.: 3000K					DIM.:			SERIAL No.: 2408211145			
MFR.: MERCURY LIGHTING					SUR.: 0.001589625m2			Shielding Angle:			
ceiling/cavity	0.7	0.7	0.5	0.5	0.3	0.7	0.7	0.5	0.5	0.3	
walls	0.5	0.3	0.5	0.3	0.3	0.5	0.3	0.5	0.3	0.3	
working plane	0.2	0.2	0.2	0.2	0.2	0.2	0.2	0.2	0.2	0.2	
Room dimensions		Viewed crosswise					Viewed endwise				
x = 2H y = 2H	13.4	14.1	13.6	14.3	14.4	15.3	16.0	15.5	16.1	16.3	
	3H	13.6	14.2	13.8	14.4	14.6	15.6	16.3	15.9	16.5	16.6
	4H	13.7	14.3	13.9	14.5	14.7	15.8	16.4	16.1	16.7	16.9
	6H	13.8	14.4	14.1	14.6	14.8	16.1	16.7	16.4	16.9	17.2
	8H	13.8	14.4	14.1	14.6	14.8	16.3	16.8	16.6	17.1	17.3
	12H	13.8	14.3	14.1	14.6	14.8	16.5	17.0	16.8	17.3	17.5
4H	2H	13.6	14.2	13.8	14.4	14.6	15.3	15.9	15.5	16.1	16.3
	3H	13.9	14.4	14.2	14.7	14.9	15.7	16.3	16.0	16.5	16.8
	4H	14.0	14.5	14.4	14.8	15.1	16.0	16.5	16.4	16.8	17.1
	6H	14.2	14.6	14.6	15.0	15.3	16.4	16.9	16.8	17.2	17.5
	8H	14.3	14.7	14.6	15.0	15.4	16.7	17.1	17.1	17.5	17.8
	12H	14.2	14.6	14.6	15.0	15.4	17.0	17.4	17.4	17.7	18.1
8H	4H	14.1	14.5	14.5	14.9	15.2	16.0	16.4	16.4	16.8	17.1
	6H	14.4	14.8	14.9	15.2	15.6	16.6	16.9	17.0	17.3	17.7
	8H	14.5	14.8	15.0	15.3	15.7	16.9	17.2	17.4	17.6	18.1
	12H	14.5	14.8	15.0	15.2	15.7	17.3	17.6	17.8	18.0	18.5
12H	4H	14.1	14.5	14.5	14.9	15.3	16.0	16.4	16.4	16.7	17.1
	6H	14.5	14.8	14.9	15.2	15.7	16.6	16.9	17.0	17.3	17.7
	8H	14.6	14.9	15.1	15.3	15.8	17.0	17.2	17.4	17.7	18.1
Variations with the observer position at spacings(CIE Pub.117):											
S = 1.0H	+ 1.1 / - 1.6					+ 0.8 / - 1.0					
1.5H	+ 1.2 / - 1.2					+ 1.2 / - 1.1					
2.0H	+ 2.1 / - 1.8					+ 2.4 / - 1.4					

CIE Pub.117, 1125 lm Total Lamp Luminous Flux Correct (8log(F/F0) = 0.4)
 Area: 0.00158963 m2

C Range: 0 - 360DEG	γ Range: 0 - 180DEG
C Interval: For a lens beam angle of 24°	γ Interval: 1.0DEG
Test Speed: HIGH	Test System: EVERFINE GO-SPEX500_V1 SYSTEM V2.00.461
Temperature: 77.54 °F	Humidity: 65.0%
Operators: zoe	Test Distance: 124.409" [K=1.0000]
Test Date: 2024-8-21	Remarks: LAMP: BXRH-30G10T0-G-83 Ra: 90
	LENS: PM-1084A 24R
	NO DRIVER: 500mA
	30minutes warm-up

UTILIZATION FACTORS TABLE

Test:U:17.648V I:0.5000A P:8.8240W PF:1.0000 Freq:49.99Hz Lamp Flux:1124.6x1 lm		
NAME: CTL-MM-1.5-30K-24-RD-AD-OPL-SG	TYPE:	WEIGHT:
SPEC.: 3000K	DIM.:	SERIAL No.: 2408211145
MFR.: MERCURY LIGHTING	SUR.: 0.001589625m2	Shielding Angle:

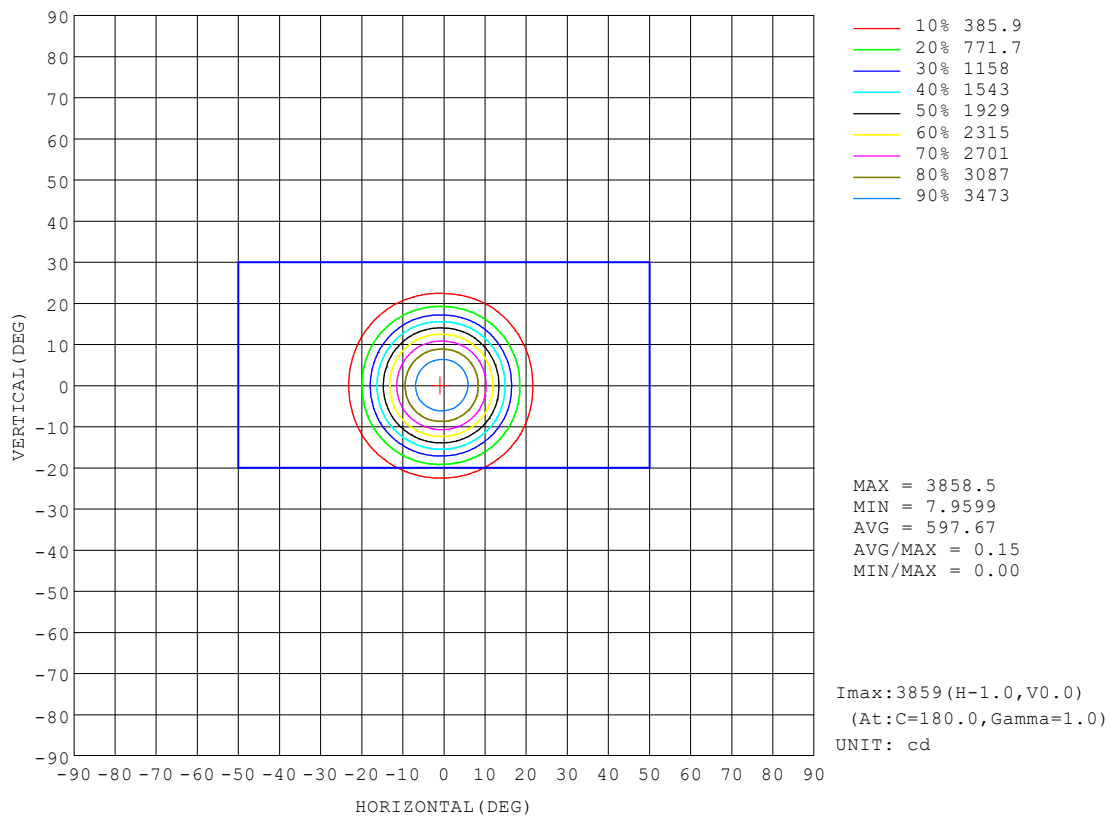
REFLECTANCE										
Ceiling	0.8	0.8	0.8	0.7	0.7	0.7	0.5	0.5	0.5	0
Walls	0.7	0.5	0.3	0.7	0.5	0.3	0.7	0.5	0.3	0
Working plane	0.2	0.2	0.2	0.2	0.2	0.2	0.2	0.2	0.2	0
ROOM INDEX	UTILIZATION FACTORS (PERCENT) $k(RI) \times RCR = 5$									
$k = 0.60$	77	72	69	77	72	69	76	72	69	66
0.80	84	79	76	83	79	76	82	78	75	72
1.00	87	83	80	87	82	79	85	82	79	76
1.25	91	86	83	90	86	83	88	85	82	79
1.50	93	89	86	92	88	86	90	87	85	81
2.00	95	92	89	94	91	88	92	89	87	82
2.50	97	93	91	95	92	90	93	90	88	83
3.00	98	95	93	96	94	92	93	91	90	84
4.00	100	97	95	98	96	94	95	93	92	86
5.00	101	99	97	99	97	96	95	94	93	87
ROOM INDEX	UF(total)									Direct
According to DIN EN 13032-2 2004			Suspended					SHRNOM = 1.25		

C Range: 0 - 360DEG
 C Interval: For a lens beam angle of 24°
 Test Speed: HIGH
 Temperature: 77.54 °F
 Operators: zoe
 Test Date: 2024-8-21

γ Range: 0 - 180DEG
 γ Interval: 1.0DEG
 Test System: EVERFINE GO-SPEX500_V1 SYSTEM V2.00.461
 Humidity: 65.0%
 Test Distance: 124.409" [K=1.0000]
 Remarks: LAMP: BXRH-30G10T0-G-83 Ra:90
 LENS: PM-1084A 24R
 NO DRIVER: 500mA
 30minutes warm-up

ISOCANDELA DIAGRAM

Test:U:17.648V I:0.5000A P:8.8240W PF:1.0000 Freq:49.99Hz Lamp Flux:1124.6x1 lm		
NAME: CTL-MM-1.5-30K-24-RD-AD-OPL-SG	TYPE:	WEIGHT:
SPEC.: 3000K	DIM.:	SERIAL No.: 2408211145
MFR.: MERCURY LIGHTING	SUR.: 0.001589625m2	Shielding Angle:

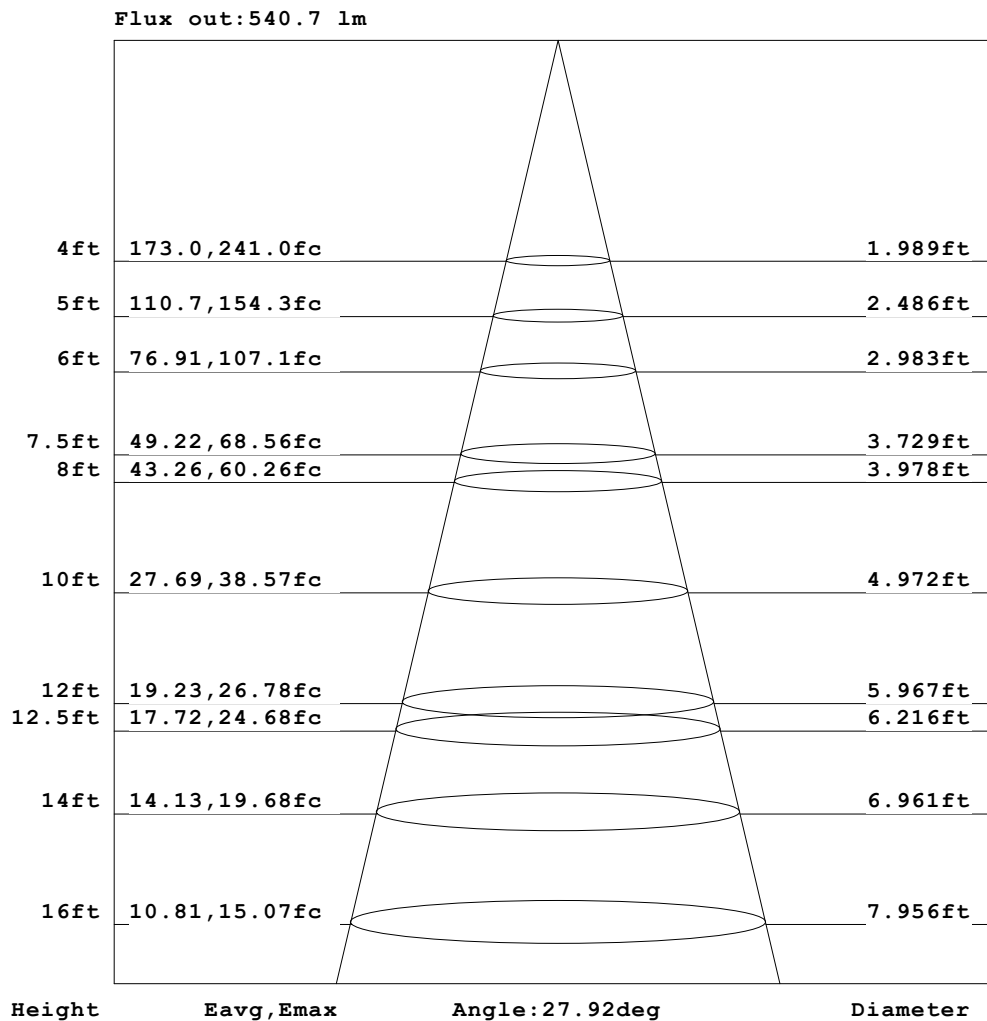


C Range: 0 - 360DEG
 C Interval: For a lens beam angle of 24°
 Test Speed: HIGH
 Temperature: 77.54 °F
 Operators: zoe
 Test Date: 2024-8-21

γ Range: 0 - 180DEG
 γ Interval: 1.0DEG
 Test System: EVERFINE GO-SPEX500_V1 SYSTEM V2.00.461
 Humidity: 65.0%
 Test Distance: 124.409" [K=1.0000]
 Remarks: LAMP: BXRH-30G10T0-G-83 Ra: 90
 LENS: PM-1084A 24R
 NO DRIVER: 500mA
 30minutes warm-up

AAI Figure

Test:U:17.648V I:0.5000A P:8.8240W PF:1.0000 Freq:49.99Hz Lamp Flux:1124.6x1 lm		
NAME: CTL-MM-1.5-30K-24-RD-AD-OPL-SG	TYPE:	WEIGHT:
SPEC.: 3000K	DIM.:	SERIAL No.: 2408211145
MFR.: MERCURY LIGHTING	SUR.: 0.001589625m2	Shielding Angle:

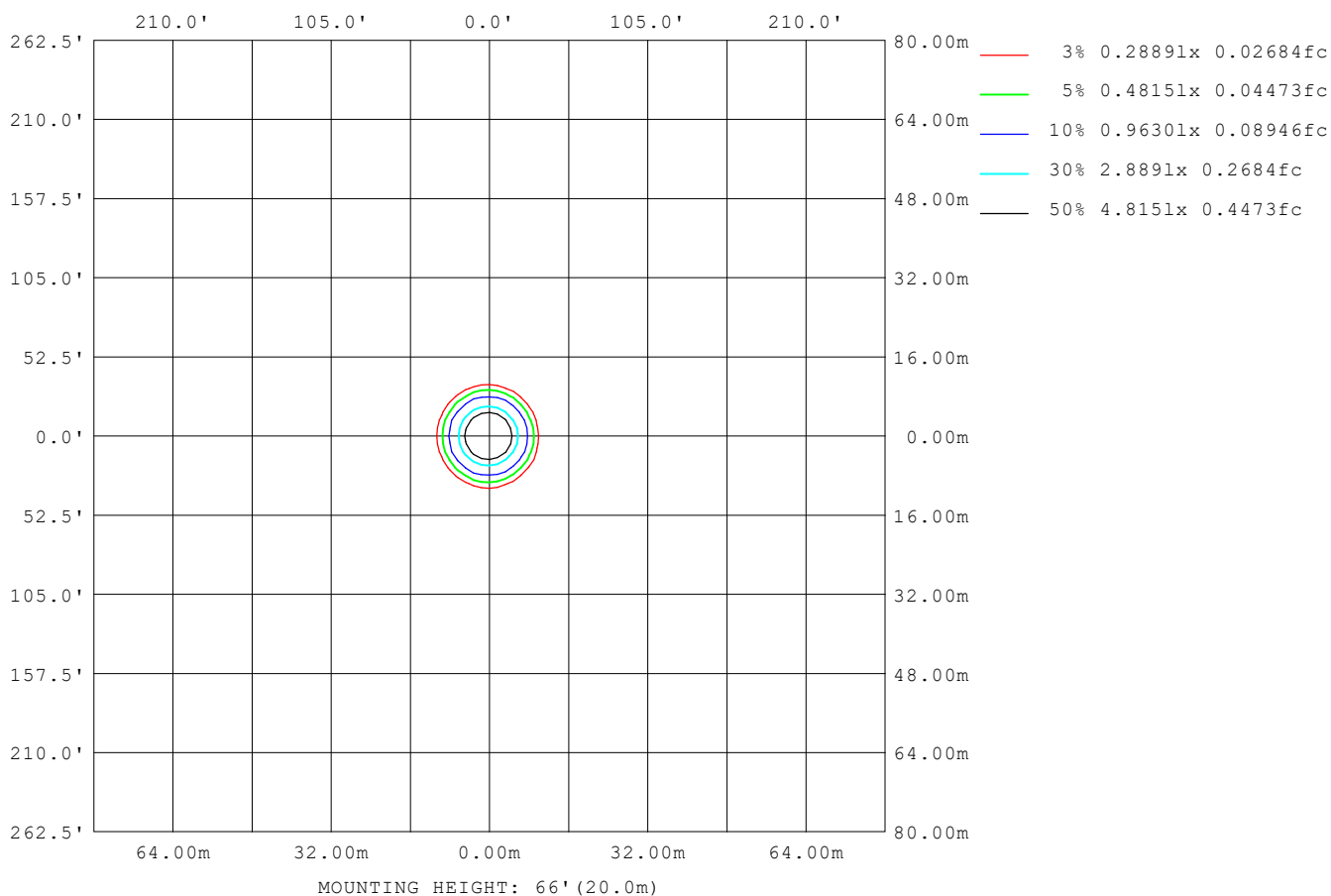


Note: The Curves indicate the illuminated area and the average illumination when the luminaire is at different distance.

C Range: 0 - 360DEG	γ Range: 0 - 180DEG
C Interval: For a lens beam angle of 24°	γ Interval: 1.0DEG
Test Speed: HIGH	Test System: EVERFINE GO-SPEX500_V1 SYSTEM V2.00.461
Temperature: 77.54 °F	Humidity: 65.0%
Operators: zoe	Test Distance: 124.409" [K=1.0000]
Test Date: 2024-8-21	Remarks: LAMP: BXRH-30G10T0-G-83 Ra: 90
	LENS: PM-1084A 24R
	NO DRIVER: 500mA
	30minutes warm-up

ISOLUX DIAGRAM

Test:U:17.648V I:0.5000A P:8.8240W PF:1.0000 Freq:49.99Hz Lamp Flux:1124.6x1 lm		
NAME: CTL-MM-1.5-30K-24-RD-AD-OPL-SG	TYPE:	WEIGHT:
SPEC.: 3000K	DIM.:	SERIAL No.: 2408211145
MFR.: MERCURY LIGHTING	SUR.: 0.001589625m2	Shielding Angle:



C Range: 0 - 360DEG
 C Interval: For a lens beam angle of 24°
 Test Speed: HIGH
 Temperature: 77.54°F
 Operators: zoe
 Test Date: 2024-8-21

γ Range: 0 - 180DEG
 γ Interval: 1.0DEG
 Test System: EVERFINE GO-SPEX500_V1 SYSTEM V2.00.461
 Humidity: 65.0%
 Test Distance: 124.409" [K=1.0000]
 Remarks: LAMP: BXRH-30G10T0-G-83 Ra: 90
 LENS: PM-1084A 24R
 NO DRIVER: 500mA
 30minutes warm-up

LED Avg.L Report

Test:U:17.648V I:0.5000A P:8.8240W PF:1.0000 Freq:49.99Hz Lamp Flux:1124.6x1 lm		
NAME: CTL-MM-1.5-30K-24-RD-AD-OPL-SG	TYPE:	WEIGHT:
SPEC.: 3000K	DIM.:	SERIAL No.: 2408211145
MFR.: MERCURY LIGHTING	SUR.: 0.001589625m2	Shielding Angle:

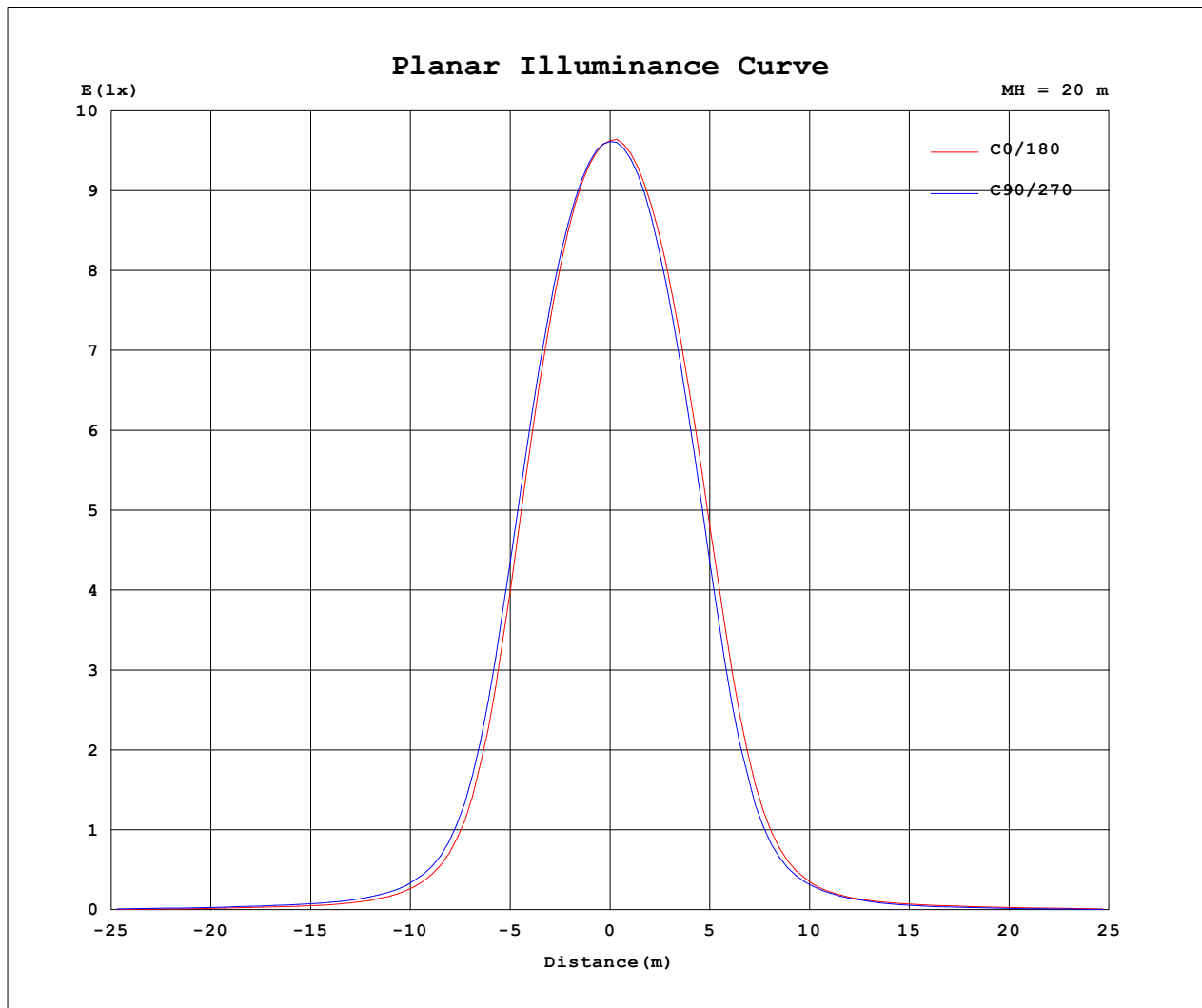
AvgL	cd/m2
L_0~180 (65) av	8323
L_0~180 (75) av	6897
L_0~180 (85) av	8362
L_90~270 (65) av	8077
L_90~270 (75) av	6937
L_90~270 (85) av	8426
L_45 (65) av	8109
L_45 (75) av	6912
L_45 (85) av	8390

Standard: GB/T 29293-2012

C Range: 0 - 360DEG
 C Interval: For a lens beam angle of 24°
 Test Speed: HIGH
 Temperature: 77.54 °F
 Operators: zoe
 Test Date: 2024-8-21

γ Range: 0 - 180DEG
 γ Interval: 1.0DEG
 Test System: EVERFINE GO-SPEX500_V1 SYSTEM V2.00.461
 Humidity: 65.0%
 Test Distance: 124.409" [K=1.0000]
 Remarks: LAMP: BXRH-30G10T0-G-83 Ra: 90
 LENS: PM-1084A 24R
 NO DRIVER: 500mA
 30minutes warm-up

Planar Illuminance Curve



C Range: 0 - 360DEG

C Interval: For a lens beam angle of 24°

Test Speed: HIGH

Temperature: 77.54 °F

Operators: zoe

Test Date: 2024-8-21

γ Range: 0 - 180DEG

γ Interval: 1.0DEG

Test System: EVERFINE GO-SPEX500_V1 SYSTEM V2.00.461

Humidity: 65.0%

Test Distance: 124.409" [K=1.0000]

Remarks: LAMP: BXRH-30G10T0-G-83 Ra: 90

LENS: PM-1084A 24R

NO DRIVER: 500mA

30minutes warm-up

LUMINOUS DISTRIBUTION INTENSITY DATA

Test:U:17.648V I:0.5000A P:8.8240W PF:1.0000 Freq:49.99Hz Lamp Flux:1124.6x1 lm		
NAME: CTL-MM-1.5-30K-24-RD-AD-OPL-SG	TYPE:	WEIGHT:
SPEC.: 3000K	DIM.:	SERIAL No.: 2408211145
MFR.: MERCURY LIGHTING	SUR.: 0.001589625m2	Shielding Angle:

Table--1

UNIT: cd

C (DEG) γ (DEG)	0	30	60	90	120	150	180	210	240	270	300	330						
0	3849	3849	3849	3849	3849	3849	3849	3849	3849	3849	3849	3849						
5	3570	3559	3583	3599	3635	3666	3666	3653	3645	3626	3608	3584						
10	2756	2782	2813	2850	2926	2990	2991	2976	2936	2863	2838	2785						
15	1503	1557	1591	1670	1758	1850	1868	1843	1788	1664	1618	1533						
20	540	576	600	645	707	754	759	762	713	636	610	560						
25	196	217	224	243	256	265	263	263	254	230	226	200						
30	89.5	101	110	118	120	118	115	119	107	97.9	97.9	89.1						
35	49.7	57.5	65.3	70.9	72.3	70.9	68.3	67.8	64.9	55.9	50.8	47.5						
40	34.4	39.3	45.9	51.1	52.9	51.7	49.2	44.8	39.7	34.6	32.4	32.0						
45	23.1	27.5	33.5	38.2	40.9	40.7	37.9	32.5	27.7	23.6	21.6	21.4						
50	15.2	17.2	21.0	25.8	28.6	28.9	26.4	21.9	17.8	15.4	14.2	14.1						
55	9.62	11.3	13.6	16.2	17.9	18.4	16.8	14.3	11.6	9.82	8.83	8.74						
60	5.90	7.17	8.75	10.7	12.1	12.3	11.2	9.14	7.22	5.95	5.24	5.29						
65	3.83	4.62	5.69	7.06	7.99	8.17	7.36	5.86	4.59	3.79	3.35	3.35						
70	2.63	3.29	4.12	5.06	5.61	5.64	5.08	4.15	3.25	2.62	2.28	2.29						
75	1.86	2.42	3.16	3.87	4.28	4.27	3.81	3.10	2.38	1.83	1.57	1.58						
80	1.28	1.78	2.42	3.04	3.41	3.40	2.97	2.33	1.76	1.31	1.04	1.02						
85	0.20	0.65	1.30	2.02	2.45	2.50	2.12	1.46	0.82	0.32	0.06	0.04						
90	0.00	0.00	0.00	0.00	0.00	0.00	0.00	0.00	0.00	0.00	0.00	0.00						
95	0.00	0.00	0.00	0.00	0.00	0.00	0.00	0.00	0.00	0.00	0.00	0.00						
100	0.00	0.00	0.00	0.00	0.00	0.00	0.00	0.00	0.00	0.00	0.00	0.00						
105	0.00	0.00	0.00	0.00	0.00	0.00	0.00	0.00	0.00	0.00	0.00	0.00						
110	0.00	0.00	0.00	0.00	0.00	0.00	0.00	0.00	0.00	0.00	0.00	0.00						
115	0.00	0.00	0.00	0.00	0.00	0.00	0.00	0.00	0.00	0.00	0.00	0.00						
120	0.00	0.00	0.00	0.00	0.00	0.00	0.00	0.00	0.00	0.00	0.00	0.00						
125	0.00	0.00	0.00	0.00	0.00	0.00	0.00	0.00	0.00	0.00	0.00	0.00						
130	0.00	0.00	0.00	0.00	0.00	0.00	0.00	0.00	0.00	0.00	0.00	0.00						
135	0.00	0.00	0.00	0.00	0.00	0.00	0.00	0.00	0.00	0.00	0.00	0.00						
140	0.00	0.00	0.00	0.00	0.00	0.00	0.00	0.00	0.00	0.00	0.00	0.00						
145	0.00	0.00	0.00	0.00	0.00	0.00	0.00	0.00	0.00	0.00	0.00	0.00						
150	0.00	0.00	0.00	0.00	0.00	0.00	0.00	0.00	0.00	0.00	0.00	0.00						
155	0.00	0.00	0.00	0.00	0.00	0.00	0.00	0.00	0.00	0.00	0.00	0.00						
160	0.00	0.00	0.00	0.00	0.00	0.00	0.00	0.00	0.00	0.00	0.00	0.00						
165	0.00	0.00	0.00	0.00	0.00	0.00	0.00	0.00	0.00	0.00	0.00	0.00						
170	0.00	0.00	0.00	0.00	0.00	0.00	0.00	0.00	0.00	0.00	0.00	0.00						
175	0.00	0.00	0.00	0.00	0.00	0.00	0.00	0.00	0.00	0.00	0.00	0.00						
180	0.00	0.00	0.00	0.00	0.00	0.00	0.00	0.00	0.00	0.00	0.00	0.00						

C Range: 0 - 360DEG

C Interval: For a lens beam angle of 24°

Test Speed: HIGH

Temperature: 77.54 °F

Operators: zoe

Test Date: 2024-8-21

γ Range: 0 - 180DEG

γ Interval: 1.0DEG

Test System: EVERFINE GO-SPEX500_V1 SYSTEM V2.00.461

Humidity: 65.0%

Test Distance: 124.409" [K=1.0000]

Remarks: LAMP: BXRH-30G10T0-G-83 Ra: 90

LENS: PM-1084A 24R

NO DRIVER: 500mA

30minutes warm-up