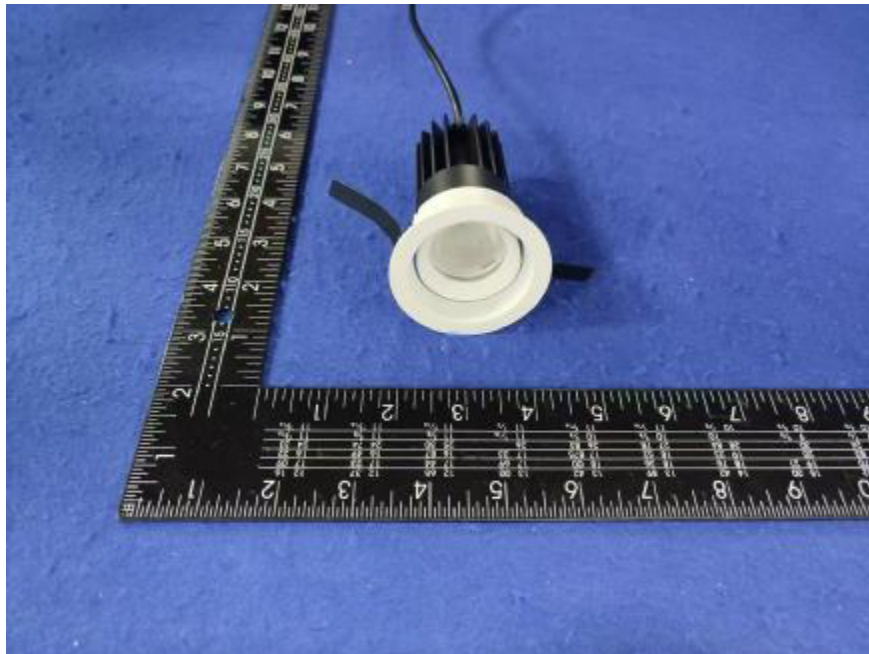


Photometric report for Flanged and Flangeless Trim



Light Output Ratio:	87.4%	
Luminaire Power:	8.829 W	
SHR Nominal:	0.00	Calculated using the TM5
SHR Maximum:	0.30	fine grid method.

C Range: 0 - 360DEG
C Interval: FOR A 15° LENS BEAM ANGLE
Test Speed: MEDIUM
Temperature: 77.54°F
Operators: zoe
Test Date: 2024-8-21

γ Range: 0 - 180DEG
γ Interval: 1.0DEG
Test System: EVERFINE GO-SPEX500_V1 SYSTEM V2.00.461
Humidity: 65.0%
Test Distance: 124.409" [K=1.0000]
Remarks: LAMP: BXRH-30G10T0-G-83 Ra: 90
LENS: PM-1084 15R
NO DRIVER: 500mA
30minutes warm-up

LUMINOUS INTENSITY DISTRIBUTION DIAGRAM

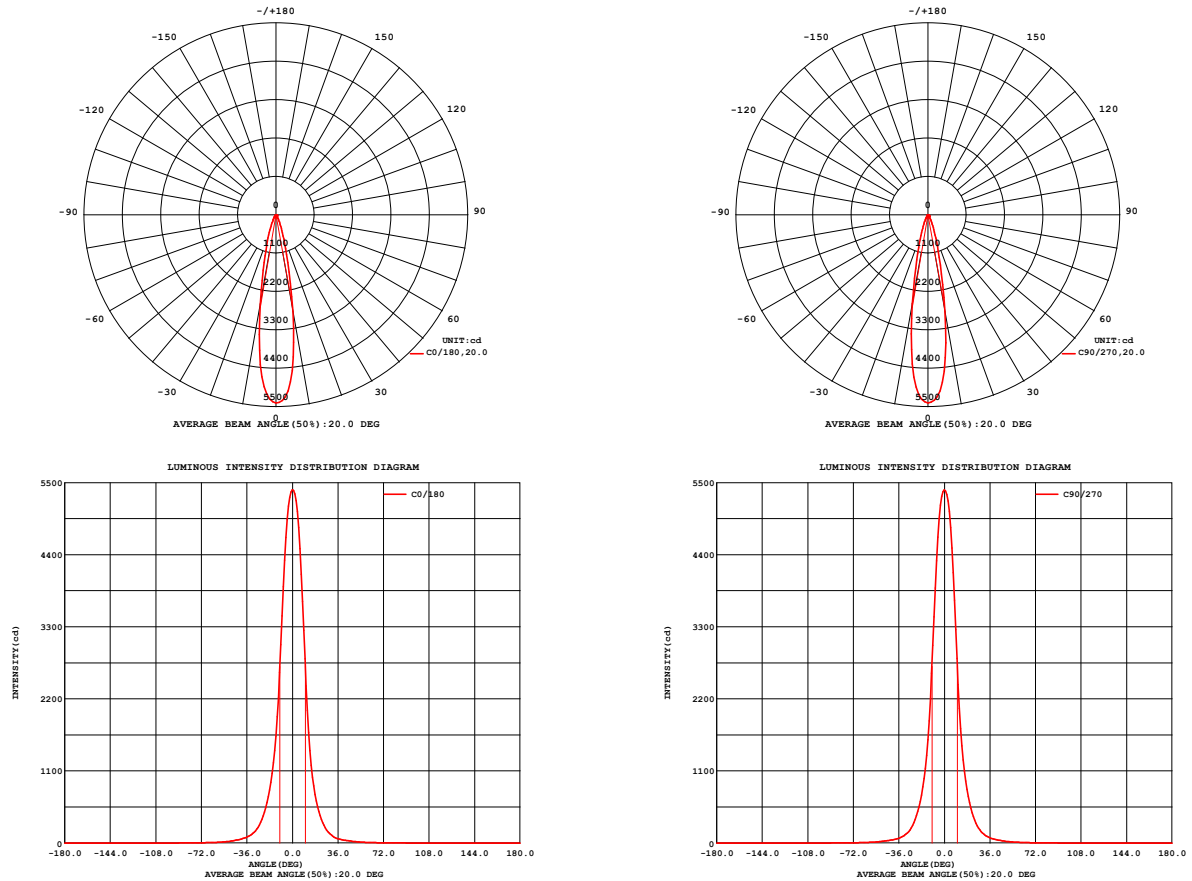


Fig. C0/C180

Fig. C90/C270

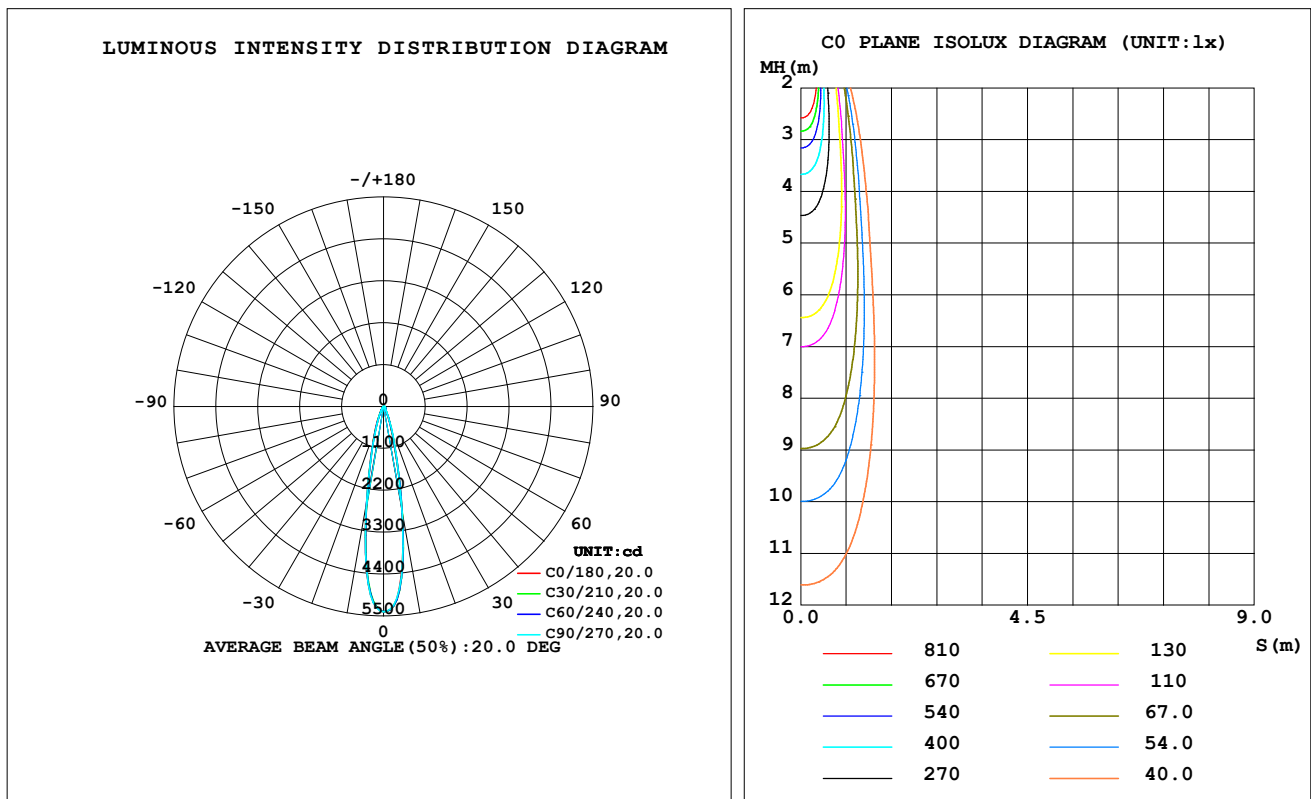
C Range: 0 - 360DEG
C Interval: FOR A 15° LENS BEAM ANGLE
Test Speed: MEDIUM
Temperature: 77.54°F
Operators: zoe
Test Date: 2024-8-21

γ Range: 0 - 180DEG
γ Interval: 1.0DEG
Test System: EVERFINE GO-SPEX500_V1 SYSTEM V2.00.461
Humidity: 65.0%
Test Distance: 124.409" [K=1.0000]
Remarks: LAMP: BXRH-30G10T0-G-83 Ra: 90
LENS: PM-1084 15R
NO DRIVER: 500mA
30minutes warm-up

LUMINAIRE PHOTOMETRIC TEST REPORT

Test:U:17.658V I:0.5000A P:8.8290W PF:1.0000 Freq:49.99Hz Lamp Flux:1124.6x1 lm		
NAME: CTL-MM-1.5-30K-15-RD-AD-OPL-SG	TYPE:	WEIGHT:
SPEC.: 3000K	DIM.:	SERIAL No.: 2408211144
MFR.: MERCURY LIGHTING	SUR.: 0.001589625m ²	Shielding Angle:

DATA OF LAMP		PHOTOMETRIC DATA Eff: 111.38 lm/W			
MODEL	Brideglux	I _{max} (cd)	5391	S/MH (C0/180)	0.34
NOMINAL POWER (W)	9	LOR (%)	87.4	S/MH (C90/270)	0.33
RATED VOLTAGE (V)	18	TOTAL FLUX (lm)	983.41	☒ UP, DN (C0-180)	0.0, 44.5
NOMINAL FLUX (lm)	1124.6	CIE CLASS	DIRECT	☒ UP, DN (C180-360)	0.0, 42.9
LAMPS INSIDE	1	☒ up (%)	0.0	CIBSE SHR NOM	0.00
TEST VOLTAGE (V)	18	☒ down (%)	87.4	CIBSE SHR MAX	0.30



C Range: 0 - 360DEG
 C Interval: FOR A 15° LENS BEAM ANGLE
 Test Speed: MEDIUM
 Temperature: 77.54°F
 Operators: zoe
 Test Date: 2024-8-21

γ Range: 0 - 180DEG
 γ Interval: 1.0DEG
 Test System: EVERFINE GO-SPEX500_V1 SYSTEM V2.00.461
 Humidity: 65.0%
 Test Distance: 124.409" [K=1.0000]
 Remarks: LAMP: BXRH-30G10T0-G-83 Ra: 90
 LENS: PM-1084 15R
 NO DRIVER: 500mA
 30minutes warm-up

ZONAL FLUX DIAGRAM

ZONAL FLUX DIAGRAM:

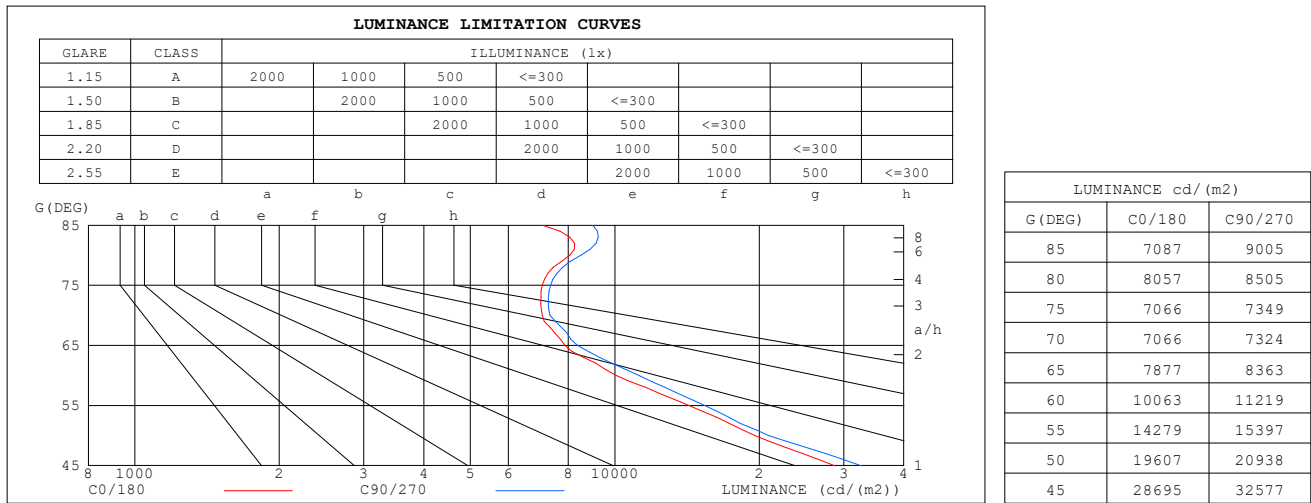
°	C0	C45	C90	C135	C180	C225	C270	C315	°	zone	total	%lum,lamp
10	2813	2860	2816	2695	2600	2559	2590	2716	0- 10	383.5	383.5	39,34.1
20	555.7	578.8	615.5	622.2	616.9	581.8	551.9	549.6	10- 20	354.0	737.5	75,65.6
30	133.8	142.7	155.0	160.0	165.5	152.2	137.6	131.1	20- 30	138.9	876.4	89.1,77.9
40	47.00	50.05	55.73	59.67	62.53	58.16	51.98	47.88	30- 40	55.21	931.6	94.7,82.8
50	20.03	20.28	21.39	22.94	24.02	23.41	22.15	20.96	40- 50	28.12	959.8	97.6,85.3
60	7.998	8.305	8.917	9.597	9.645	9.591	9.244	8.672	50- 60	12.96	972.7	98.9,86.5
70	3.841	3.831	3.981	4.265	4.488	4.407	4.194	3.983	60- 70	6.011	978.7	99.5,87
80	2.224	2.227	2.348	2.486	2.616	2.595	2.496	2.329	70- 80	3.349	982.1	99.9,87.3
90	0	0	0	0	0	0	0	0	80- 90	1.337	983.4	100,87.4
100	0	0	0	0	0	0	0	0	90-100	0	983.4	100,87.4
110	0	0	0	0	0	0	0	0	100-110	0	983.4	100,87.4
120	0	0	0	0	0	0	0	0	110-120	0	983.4	100,87.4
130	0	0	0	0	0	0	0	0	120-130	0	983.4	100,87.4
140	0	0	0	0	0	0	0	0	130-140	0	983.4	100,87.4
150	0	0	0	0	0	0	0	0	140-150	0	983.4	100,87.4
160	0	0	0	0	0	0	0	0	150-160	0	983.4	100,87.4
170	0	0	0	0	0	0	0	0	160-170	0	983.4	100,87.4
180	0	0	0	0	0	0	0	0	170-180	0	983.4	100,87.4
DEG	LUMINOUS INTENSITY:cd									UNIT:lm		

C Range: 0 - 360DEG
 C Interval: FOR A 15° LENS BEAM ANGLE
 Test Speed: MEDIUM
 Temperature:77.54°F
 Operators:zoe
 Test Date:2024-8-21

γ Range: 0 - 180DEG
 γ Interval: 1.0DEG
 Test System:EVERFINE GO-SPEX500_V1 SYSTEM V2.00.461
 Humidity:65.0%
 Test Distance:124.409" [K=1.0000]
 Remarks: LAMP:BXRH-30G10T0-G-83 Ra:90
 LENS:PM-1084 15R
 NO DRIVER:500mA
 30minutes warm-up

LUMINANCE LIMITATION CURVES

Test:U:17.658V I:0.5000A P:8.8290W PF:1.0000 Freq:49.99Hz Lamp Flux:1124.6x1 lm		
NAME: CTL-MM-1.5-30K-15-RD-AD-OPL-SG	TYPE:	WEIGHT:
SPEC.: 3000K	DIM.:	SERIAL No.: 2408211144
MFR.: MERCURY LIGHTING	SUR.: 0.001589625m2	Shielding Angle:



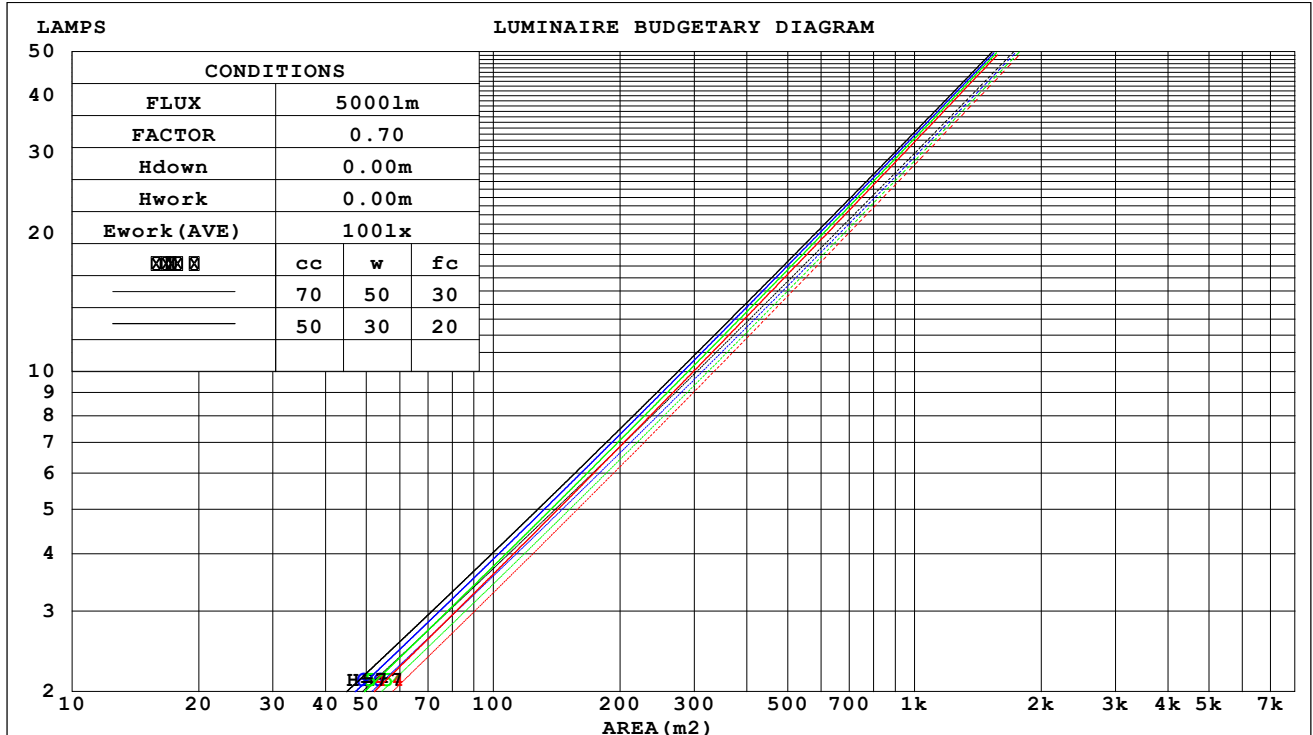
C Range: 0 - 360DEG
C Interval: FOR A 15° LENS BEAM ANGLE
Test Speed: MEDIUM
Temperature: 77.54°F
Operators: zoe
Test Date: 2024-8-21

γ Range: 0 - 180DEG
γ Interval: 1.0DEG
Test System: EVERFINE GO-SPEX500_V1 SYSTEM V2.00.461
Humidity: 65.0%
Test Distance: 124.409" [K=1.0000]
Remarks: LAMP: BXRH-30G10T0-G-83 Ra: 90
LENS: PM-1084 15R
NO DRIVER: 500mA
30minutes warm-up

CU AND LUMINAIRE BUDGETARY ESTIMATE DIAGRAM

Test:U:17.658V I:0.5000A P:8.8290W PF:1.0000 Freq:49.99Hz Lamp Flux:1124.6x1 lm		
NAME: CTL-MM-1.5-30K-15-RD-AD-OPL-SG	TYPE:	WEIGHT:
SPEC.: 3000K	DIM.:	SERIAL No.: 2408211144
MFR.: MERCURY LIGHTING	SUR.: 0.001589625m2	Shielding Angle:

cc	80%			70%			50%			30%			10%			0
w	50%	30%	10%	50%	30%	10%	50%	30%	10%	50%	30%	10%	50%	30%	10%	0
fc	20%			20%			20%			20%			20%			0
RCR	RCR:Room Cavity Ratio															



C Range: 0 - 360DEG
 C Interval: FOR A 15° LENS BEAM ANGLE
 Test Speed: MEDIUM
 Temperature: 77.54°F
 Operators: zoe
 Test Date: 2024-8-21

γ Range: 0 - 180DEG
 γ Interval: 1.0DEG
 Test System: EVERFINE GO-SPEX500_V1 SYSTEM V2.00.461
 Humidity: 65.0%
 Test Distance: 124.409" [K=1.0000]
 Remarks: LAMP: BXRH-30G10T0-G-83 Ra: 90
 LENS: PM-1084 15R
 NO DRIVER: 500mA
 30minutes warm-up

WEC AND CCEC

Test:U:17.658V I:0.5000A P:8.8290W PF:1.0000 Freq:49.99Hz Lamp Flux:1124.6x1 lm		
NAME: CTL-MM-1.5-30K-15-RD-AD-OPL-SG	TYPE:	WEIGHT:
SPEC.: 3000K	DIM.:	SERIAL No.: 2408211144
MFR.: MERCURY LIGHTING	SUR.: 0.001589625m2	Shielding Angle:

cc	80%			70%			50%			30%			10%			0
w	50%	30%	10%	50%	30%	10%	50%	30%	10%	50%	30%	10%	50%	30%	10%	0
fc	20%			20%			20%			20%			20%			0
RCR	RCR:Room Cavity Ratio						Wall Exitance Coefficients(WEC)									
0.0																
1.0	.126	.072	.023	.121	.069	.022	.110	.063	.020	.100	.058	.018	.091	.052	.017	
2.0	.117	.064	.020	.113	.062	.019	.104	.058	.018	.095	.053	.017	.088	.050	.016	
3.0	.109	.058	.017	.105	.056	.017	.098	.053	.016	.091	.050	.015	.084	.047	.014	
4.0	.102	.053	.016	.099	.052	.015	.093	.049	.015	.087	.047	.014	.081	.044	.013	
5.0	.096	.049	.014	.093	.048	.014	.088	.046	.013	.083	.044	.013	.078	.042	.013	
6.0	.091	.045	.013	.088	.045	.013	.084	.043	.012	.079	.041	.012	.075	.040	.012	
7.0	.086	.042	.012	.084	.042	.012	.080	.040	.012	.076	.039	.011	.072	.038	.011	
8.0	.082	.040	.011	.080	.039	.011	.076	.038	.011	.073	.037	.011	.070	.036	.010	
9.0	.078	.038	.010	.076	.037	.010	.073	.036	.010	.070	.035	.010	.067	.034	.010	
10.0	.074	.036	.010	.073	.035	.010	.070	.034	.010	.067	.033	.009	.065	.033	.009	

cc	80%			70%			50%			30%			10%			0
w	50%	30%	10%	50%	30%	10%	50%	30%	10%	50%	30%	10%	50%	30%	10%	0
fc	20%			20%			20%			20%			20%			0
RCR	RCR:Room Cavity Ratio						Ceiling Cavity Exitance Coefficients(CCEC)									
0.0	.167	.167	.167	.142	.142	.142	.097	.097	.097	.056	.056	.056	.018	.018	.018	
1.0	.148	.138	.129	.126	.118	.111	.086	.081	.077	.050	.047	.045	.016	.015	.014	
2.0	.132	.116	.102	.113	.100	.088	.078	.069	.062	.045	.040	.036	.014	.013	.012	
3.0	.119	.099	.083	.102	.085	.072	.070	.059	.050	.041	.035	.030	.013	.011	.010	
4.0	.109	.086	.068	.093	.074	.059	.064	.052	.042	.037	.030	.025	.012	.010	.008	
5.0	.100	.075	.057	.086	.065	.050	.059	.045	.035	.034	.027	.021	.011	.009	.007	
6.0	.092	.066	.048	.079	.057	.042	.054	.040	.030	.032	.024	.018	.010	.008	.006	
7.0	.085	.059	.041	.073	.051	.036	.051	.036	.025	.029	.021	.015	.010	.007	.005	
8.0	.079	.053	.035	.068	.046	.031	.047	.032	.022	.028	.019	.013	.009	.006	.004	
9.0	.074	.048	.031	.064	.042	.027	.044	.030	.019	.026	.017	.011	.008	.006	.004	
10.0	.070	.044	.027	.060	.038	.024	.042	.027	.017	.024	.016	.010	.008	.005	.003	

C Range: 0 - 360DEG
C Interval: FOR A 15° LENS BEAM ANGLE
Test Speed: MEDIUM
Temperature:77.54°F
Operators:zoe
Test Date:2024-8-21

γ Range: 0 - 180DEG
γ Interval: 1.0DEG
Test System:EVERFINE GO-SPEX500_V1 SYSTEM V2.00.461
Humidity:65.0%
Test Distance:124.409" [K=1.0000]
Remarks: LAMP:BXRH-30G10T0-G-83 Ra:90
LENS:PM-1084 15R
NO DRIVER:500mA
30minutes warm-up

UGR(Unified Glare Rating) Table

Test:U:17.658V I:0.5000A P:8.8290W PF:1.0000 Freq:49.99Hz Lamp Flux:1124.6x1 lm											
NAME: CTL-MM-1.5-30K-15-RD-AD-OPL-SG						TYPE:		WEIGHT:			
SPEC.: 3000K						DIM.:		SERIAL No.: 2408211144			
MFR.: MERCURY LIGHTING						SUR.: 0.001589625m2		Shielding Angle:			
ceiling/cavity	0.7	0.7	0.5	0.5	0.3	0.7	0.7	0.5	0.5	0.3	
walls	0.5	0.3	0.5	0.3	0.3	0.5	0.3	0.5	0.3	0.3	
working plane	0.2	0.2	0.2	0.2	0.2	0.2	0.2	0.2	0.2	0.2	
Room dimensions		Viewed crosswise					Viewed endwise				
x = 2H y = 2H	15.1	15.8	15.3	15.9	16.1	15.6	16.3	15.8	16.5	16.6	
	3H	15.3	15.9	15.5	16.1	16.3	15.8	16.4	16.0	16.6	16.8
	4H	15.4	16.0	15.7	16.2	16.5	15.9	16.5	16.2	16.7	16.9
	6H	15.6	16.2	15.9	16.4	16.6	16.1	16.6	16.3	16.9	17.1
	8H	15.7	16.2	16.0	16.5	16.7	16.1	16.7	16.4	16.9	17.2
	12H	15.7	16.2	16.0	16.5	16.8	16.2	16.7	16.5	17.0	17.3
4H	2H	15.1	15.7	15.4	15.9	16.1	15.6	16.2	15.9	16.4	16.6
	3H	15.4	16.0	15.7	16.2	16.5	15.9	16.4	16.2	16.7	16.9
	4H	15.6	16.1	16.0	16.4	16.7	16.1	16.5	16.4	16.8	17.1
	6H	15.9	16.3	16.3	16.7	17.0	16.3	16.7	16.7	17.1	17.4
	8H	16.0	16.4	16.4	16.8	17.2	16.5	16.9	16.8	17.2	17.6
	12H	16.1	16.5	16.5	16.9	17.2	16.6	16.9	17.0	17.3	17.7
8H	4H	15.6	16.1	16.0	16.4	16.8	16.1	16.5	16.4	16.8	17.2
	6H	16.0	16.4	16.5	16.8	17.2	16.4	16.8	16.8	17.2	17.6
	8H	16.3	16.6	16.7	17.0	17.4	16.7	17.0	17.1	17.4	17.8
	12H	16.4	16.7	16.9	17.1	17.6	16.8	17.1	17.3	17.5	18.0
12H	4H	15.6	16.0	16.0	16.4	16.8	16.0	16.4	16.4	16.8	17.2
	6H	16.1	16.4	16.5	16.8	17.2	16.4	16.7	16.9	17.2	17.6
	8H	16.3	16.6	16.8	17.0	17.5	16.7	17.0	17.2	17.4	17.9
Variations with the observer position at spacings(CIE Pub.117) :											
S = 1.0H	+ 1.1 / - 1.5					+ 1.3 / - 1.6					
1.5H	+ 1.5 / - 1.2					+ 2.1 / - 1.4					
2.0H	+ 2.3 / - 1.5					+ 2.7 / - 1.6					

CIE Pub.117, 1125 lm Total Lamp Luminous Flux Correct (8log(F/F0) = 0.4)
 Area: 0.00158963 m2

C Range: 0 - 360DEG	γ Range: 0 - 180DEG
C Interval: FOR A 15° LENS BEAM ANGLE	γ Interval: 1.0DEG
Test Speed: MEDIUM	Test System:EVERFINE GO-SPEX500_V1 SYSTEM V2.00.461
Temperature:77.54°F	Humidity:65.0%
Operators:zoe	Test Distance:124.409" [K=1.0000]
Test Date:2024-8-21	Remarks: LAMP:BXRH-30G10T0-G-83 Ra:90
	LENS:PM-1084 15R
	NO DRIVER:500mA
	30minutes warm-up

UTILIZATION FACTORS TABLE

Test:U:17.658V I:0.5000A P:8.8290W PF:1.0000 Freq:49.99Hz Lamp Flux:1124.6x1 lm		
NAME: CTL-MM-1.5-30K-15-RD-AD-OPL-SG	TYPE:	WEIGHT:
SPEC.: 3000K	DIM.:	SERIAL No.: 2408211144
MFR.: MERCURY LIGHTING	SUR.: 0.001589625m2	Shielding Angle:

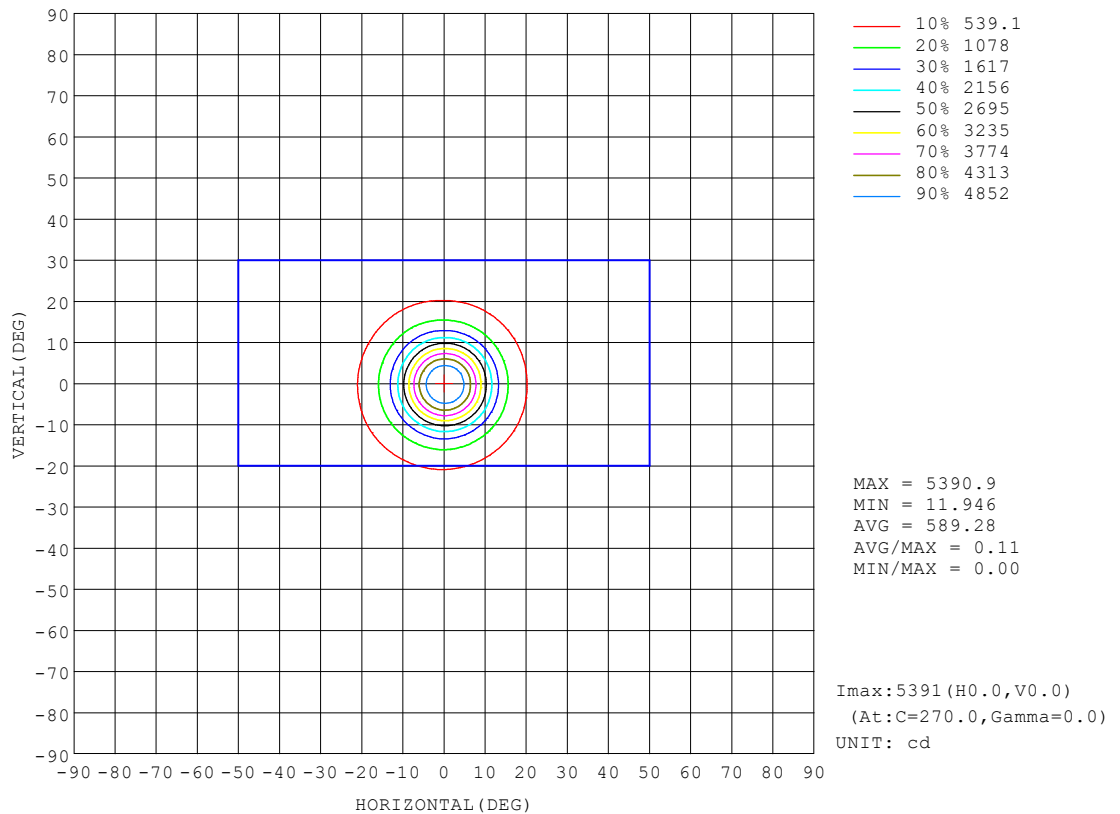
REFLECTANCE										
Ceiling	0.8	0.8	0.8	0.7	0.7	0.7	0.5	0.5	0.5	0
Walls	0.7	0.5	0.3	0.7	0.5	0.3	0.7	0.5	0.3	0
Working plane	0.2	0.2	0.2	0.2	0.2	0.2	0.2	0.2	0.2	0
ROOM INDEX	UTILIZATION FACTORS (PERCENT) $k(RI) \times RCR = 5$									
$k = 0.60$	77	72	69	77	72	68	76	71	68	65
0.80	84	79	75	83	78	75	82	78	75	72
1.00	87	82	79	87	82	79	85	82	79	75
1.25	91	86	83	90	86	83	88	85	82	79
1.50	93	89	86	92	88	86	90	87	85	81
2.00	95	92	89	94	91	88	92	89	87	82
2.50	97	93	91	95	92	90	92	90	88	83
3.00	98	95	93	96	94	92	93	91	90	84
4.00	100	97	95	98	96	94	95	93	92	86
5.00	101	99	97	99	97	96	95	94	93	87
ROOM INDEX	UF(total)									Direct
According to DIN EN 13032-2 2004			Suspended					SHRNOM = 1.25		

C Range: 0 - 360DEG
 C Interval: FOR A 15° LENS BEAM ANGLE
 Test Speed: MEDIUM
 Temperature: 77.54°F
 Operators: zoe
 Test Date: 2024-8-21

γ Range: 0 - 180DEG
 γ Interval: 1.0DEG
 Test System: EVERFINE GO-SPEX500_V1 SYSTEM V2.00.461
 Humidity: 65.0%
 Test Distance: 124.409" [K=1.0000]
 Remarks: LAMP: BXRH-30G10T0-G-83 Ra:90
 LENS: PM-1084 15R
 NO DRIVER: 500mA
 30minutes warm-up

ISOCANDELA DIAGRAM

Test:U:17.658V I:0.5000A P:8.8290W PF:1.0000 Freq:49.99Hz Lamp Flux:1124.6x1 lm		
NAME: CTL-MM-1.5-30K-15-RD-AD-OPL-SG	TYPE:	WEIGHT:
SPEC.: 3000K	DIM.:	SERIAL No.: 2408211144
MFR.: MERCURY LIGHTING	SUR.: 0.001589625m2	Shielding Angle:

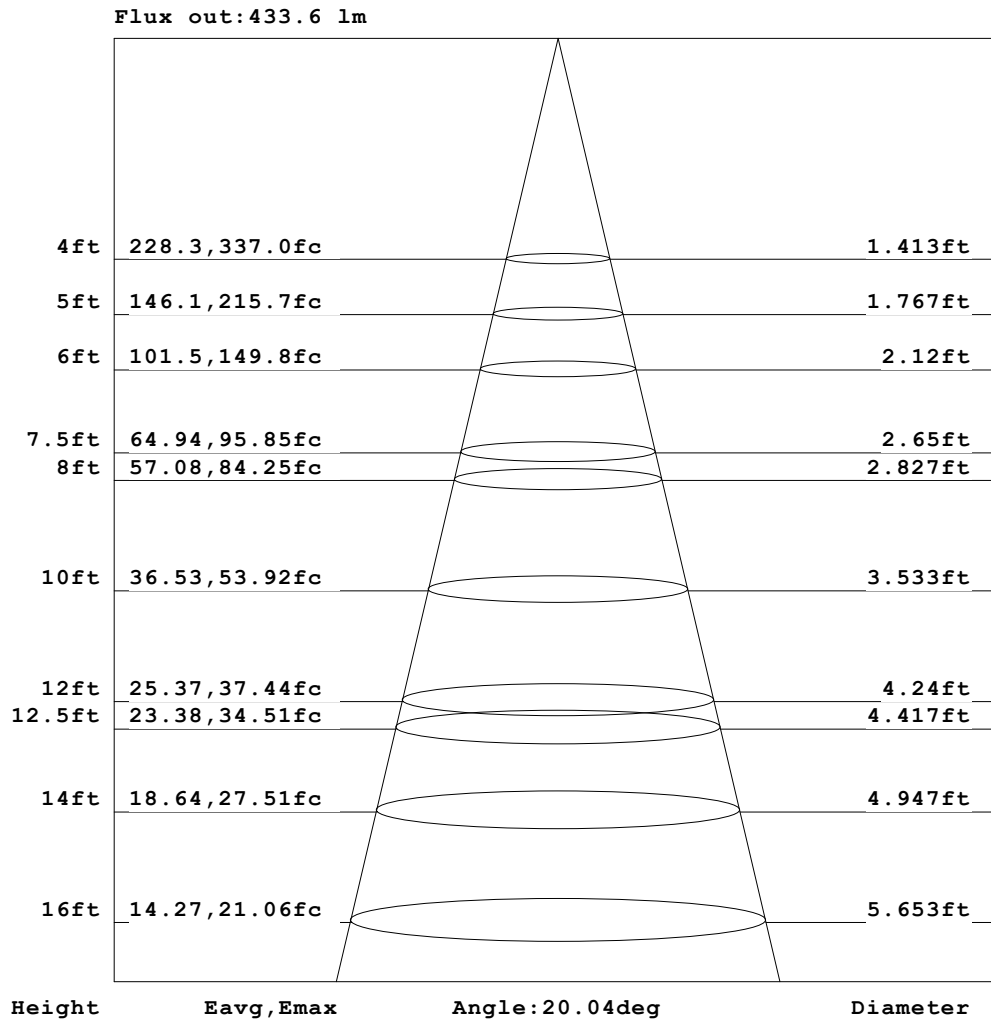


C Range: 0 - 360DEG
 C Interval: FOR A 15° LENS BEAM ANGLE
 Test Speed: MEDIUM
 Temperature:77.54°F
 Operators:zoe
 Test Date:2024-8-21

γ Range: 0 - 180DEG
 γ Interval: 1.0DEG
 Test System:EVERFINE GO-SPEX500_V1 SYSTEM V2.00.461
 Humidity:65.0%
 Test Distance:124.409" [K=1.0000]
 Remarks: LAMP:BXRH-30G10T0-G-83 Ra:90
 LENS:PM-1084 15R
 NO DRIVER:500mA
 30minutes warm-up

AAI Figure

Test:U:17.658V I:0.5000A P:8.8290W PF:1.0000 Freq:49.99Hz Lamp Flux:1124.6x1 lm		
NAME: CTL-MM-1.5-30K-15-RD-AD-OPL-SG	TYPE:	WEIGHT:
SPEC.: 3000K	DIM.:	SERIAL No.: 2408211144
MFR.: MERCURY LIGHTING	SUR.: 0.001589625m2	Shielding Angle:



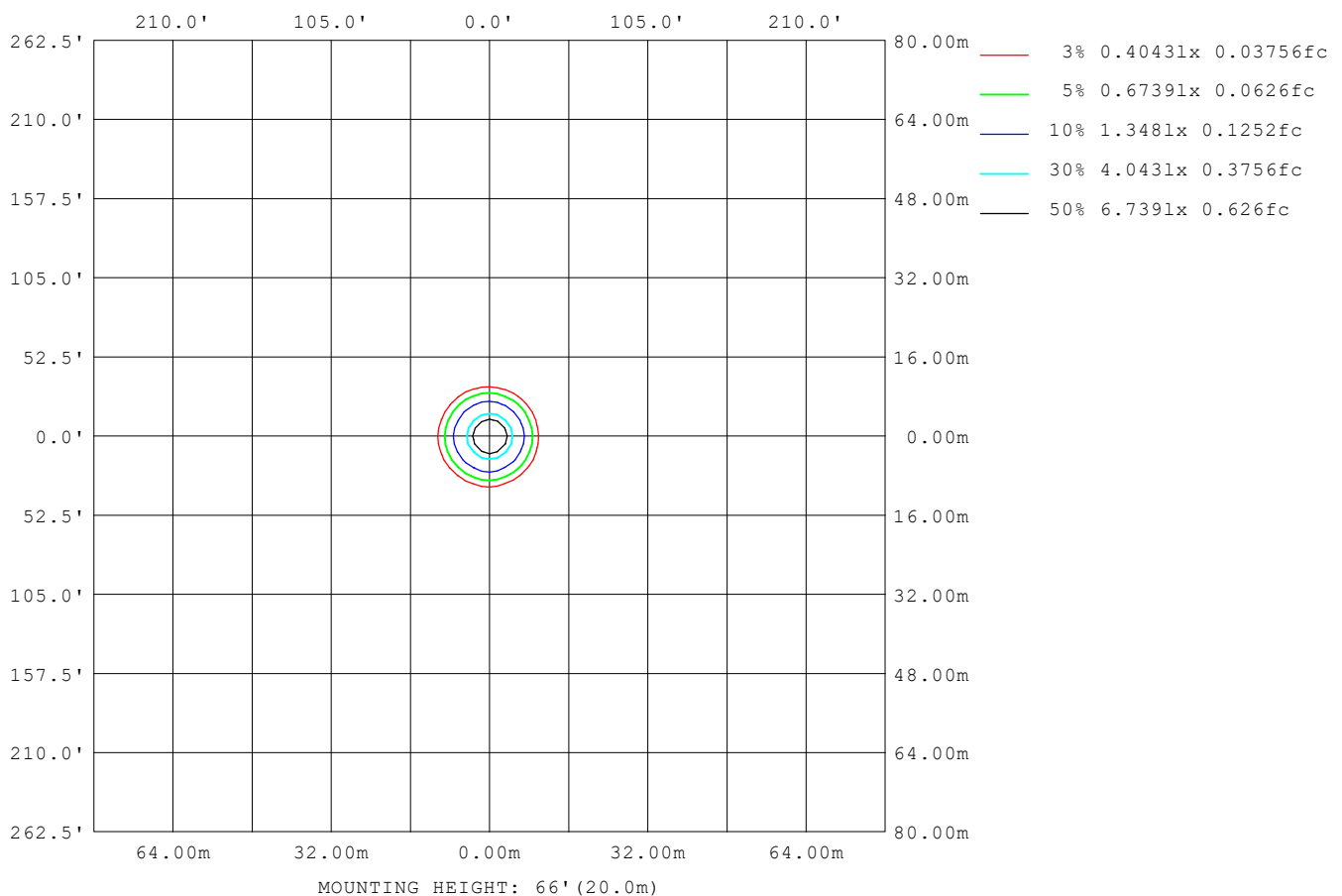
Note: The Curves indicate the illuminated area and the average illumination when the luminaire is at different distance.

C Range: 0 - 360DEG
 C Interval: FOR A 15° LENS BEAM ANGLE
 Test Speed: MEDIUM
 Temperature: 77.54°F
 Operators: zoe
 Test Date: 2024-8-21

γ Range: 0 - 180DEG
 γ Interval: 1.0DEG
 Test System: EVERFINE GO-SPEX500_V1 SYSTEM V2.00.461
 Humidity: 65.0%
 Test Distance: 124.409" [K=1.0000]
 Remarks: LAMP: BXRH-30G10T0-G-83 Ra: 90
 LENS: PM-1084 15R
 NO DRIVER: 500mA
 30minutes warm-up

ISOLUX DIAGRAM

Test:U:17.658V I:0.5000A P:8.8290W PF:1.0000 Freq:49.99Hz Lamp Flux:1124.6x1 lm		
NAME: CTL-MM-1.5-30K-15-RD-AD-OPL-SG	TYPE:	WEIGHT:
SPEC.: 3000K	DIM.:	SERIAL No.: 2408211144
MFR.: MERCURY LIGHTING	SUR.: 0.001589625m2	Shielding Angle:



C Range: 0 - 360DEG
 C Interval: FOR A 15° LENS BEAM ANGLE
 Test Speed: MEDIUM
 Temperature: 77.54°F
 Operators: zoe
 Test Date: 2024-8-21

γ Range: 0 - 180DEG
 γ Interval: 1.0DEG
 Test System: EVERFINE GO-SPEX500_V1 SYSTEM V2.00.461
 Humidity: 65.0%
 Test Distance: 124.409" [K=1.0000]
 Remarks: LAMP: BXRH-30G10T0-G-83 Ra: 90
 LENS: PM-1084 15R
 NO DRIVER: 500mA
 30minutes warm-up

LED Avg.L Report

Test:U:17.658V I:0.5000A P:8.8290W PF:1.0000 Freq:49.99Hz Lamp Flux:1124.6x1 lm		
NAME: CTL-MM-1.5-30K-15-RD-AD-OPL-SG	TYPE:	WEIGHT:
SPEC.: 3000K	DIM.:	SERIAL No.: 2408211144
MFR.: MERCURY LIGHTING	SUR.: 0.001589625m2	Shielding Angle:

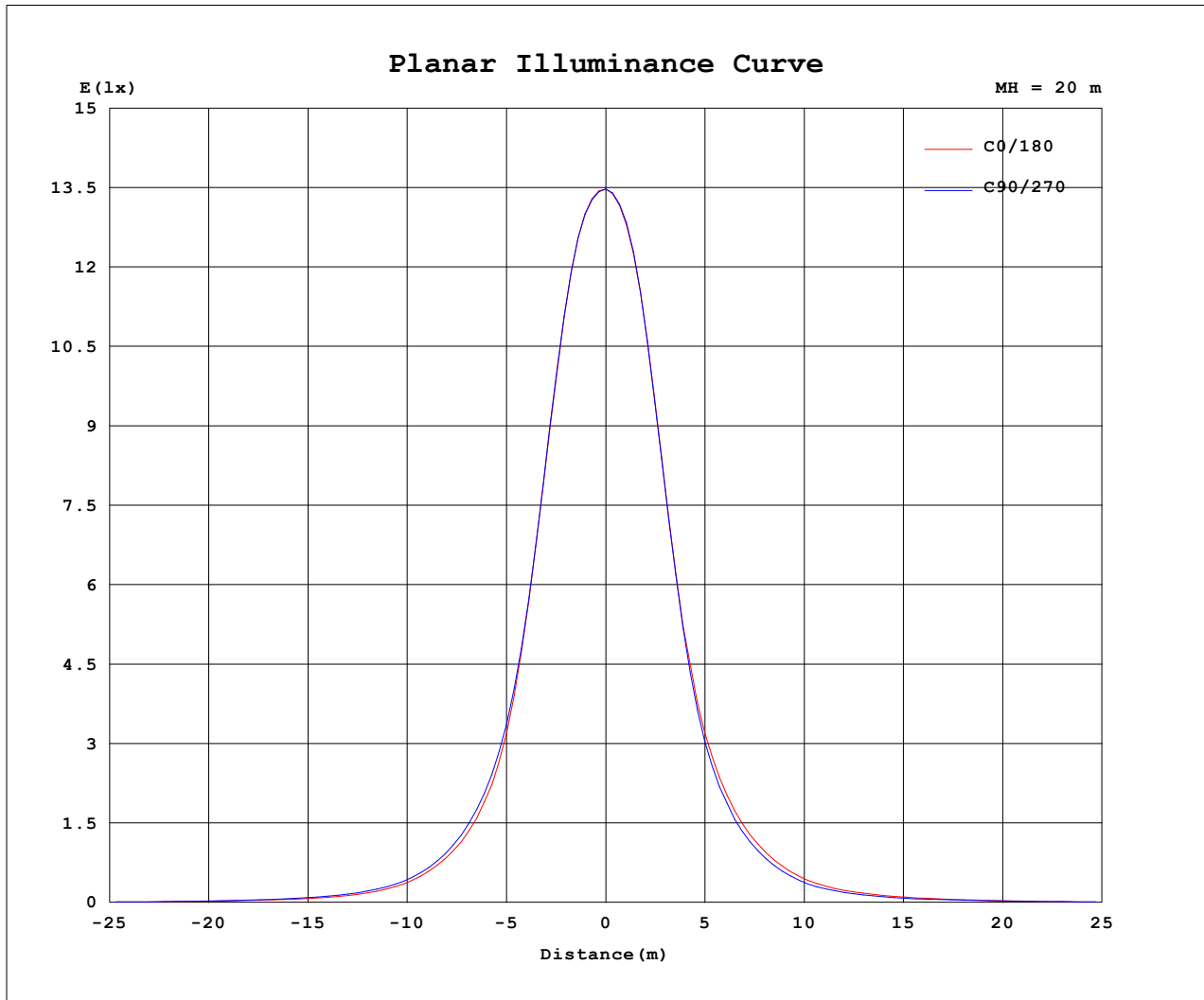
AvgL	cd/m2
L_0~180 (65) av	8625
L_0~180 (75) av	7652
L_0~180 (85) av	9161
L_90~270 (65) av	8544
L_90~270 (75) av	7596
L_90~270 (85) av	9145
L_45 (65) av	8627
L_45 (75) av	7597
L_45 (85) av	9049

Standard: GB/T 29293-2012

C Range: 0 - 360DEG
 C Interval: FOR A 15° LENS BEAM ANGLE
 Test Speed: MEDIUM
 Temperature: 77.54°F
 Operators: zoe
 Test Date: 2024-8-21

γ Range: 0 - 180DEG
 γ Interval: 1.0DEG
 Test System: EVERFINE GO-SPEX500_V1 SYSTEM V2.00.461
 Humidity: 65.0%
 Test Distance: 124.409" [K=1.0000]
 Remarks: LAMP: BXRH-30G10T0-G-83 Ra: 90
 LENS: PM-1084 15R
 NO DRIVER: 500mA
 30minutes warm-up

Planar Illuminance Curve



C Range: 0 - 360DEG
C Interval: FOR A 15° LENS BEAM ANGLE
Test Speed: MEDIUM
Temperature: 77.54°F
Operators: zoe
Test Date: 2024-8-21

γ Range: 0 - 180DEG
γ Interval: 1.0DEG
Test System: EVERFINE GO-SPEX500_V1 SYSTEM V2.00.461
Humidity: 65.0%
Test Distance: 124.409" [K=1.0000]
Remarks: LAMP: BXRH-30G10T0-G-83 Ra: 90
LENS: PM-1084 15R
NO DRIVER: 500mA
30minutes warm-up

LUMINOUS DISTRIBUTION INTENSITY DATA

Test:U:17.658V I:0.5000A P:8.8290W PF:1.0000 Freq:49.99Hz Lamp Flux:1124.6x1 lm		
NAME: CTL-MM-1.5-30K-15-RD-AD-OPL-SG	TYPE:	WEIGHT:
SPEC.: 3000K	DIM.:	SERIAL No.: 2408211144
MFR.: MERCURY LIGHTING	SUR.: 0.001589625m2	Shielding Angle:

Table--1

UNIT: cd

C (DEG) (DEG)	0	30	60	90	120	150	180	210	240	270	300	330						
0	5391	5391	5391	5391	5391	5391	5391	5391	5391	5391	5391	5391						
5	4812	4851	4838	4814	4761	4709	4664	4623	4642	4667	4731	4780						
10	2813	2871	2849	2816	2732	2658	2600	2549	2569	2590	2677	2756						
15	1186	1233	1244	1270	1252	1244	1222	1183	1177	1143	1150	1160						
20	556	571	586	615	617	627	617	588	576	552	550	549						
25	269	278	286	302	303	315	313	295	284	268	265	264						
30	134	139	146	155	156	164	166	156	149	138	132	130						
35	71.9	75.8	81.3	87.9	91.2	96.5	99.0	93.4	88.2	79.3	71.3	69.4						
40	47.0	48.7	51.4	55.7	58.2	61.2	62.5	59.9	56.4	52.0	48.6	47.1						
45	32.3	33.0	34.1	36.6	38.5	40.4	40.7	39.6	37.9	36.0	34.2	32.8						
50	20.0	20.2	20.4	21.4	22.3	23.6	24.0	23.8	23.1	22.1	21.4	20.6						
55	13.0	13.0	13.4	14.0	14.6	15.1	15.2	15.1	15.0	14.6	14.1	13.4						
60	8.00	8.18	8.43	8.92	9.49	9.70	9.65	9.64	9.54	9.24	8.90	8.45						
65	5.29	5.26	5.33	5.62	5.99	6.27	6.30	6.29	6.14	5.86	5.64	5.43						
70	3.84	3.81	3.85	3.98	4.16	4.37	4.49	4.46	4.35	4.19	4.05	3.92						
75	2.91	2.88	2.91	3.02	3.15	3.29	3.39	3.39	3.33	3.23	3.10	2.98						
80	2.22	2.21	2.25	2.35	2.44	2.53	2.62	2.61	2.58	2.50	2.38	2.28						
85	0.98	1.01	1.09	1.25	1.37	1.49	1.56	1.51	1.42	1.29	1.14	1.03						
90	0.00	0.00	0.00	0.00	0.00	0.00	0.00	0.00	0.00	0.00	0.00	0.00						
95	0.00	0.00	0.00	0.00	0.00	0.00	0.00	0.00	0.00	0.00	0.00	0.00						
100	0.00	0.00	0.00	0.00	0.00	0.00	0.00	0.00	0.00	0.00	0.00	0.00						
105	0.00	0.00	0.00	0.00	0.00	0.00	0.00	0.00	0.00	0.00	0.00	0.00						
110	0.00	0.00	0.00	0.00	0.00	0.00	0.00	0.00	0.00	0.00	0.00	0.00						
115	0.00	0.00	0.00	0.00	0.00	0.00	0.00	0.00	0.00	0.00	0.00	0.00						
120	0.00	0.00	0.00	0.00	0.00	0.00	0.00	0.00	0.00	0.00	0.00	0.00						
125	0.00	0.00	0.00	0.00	0.00	0.00	0.00	0.00	0.00	0.00	0.00	0.00						
130	0.00	0.00	0.00	0.00	0.00	0.00	0.00	0.00	0.00	0.00	0.00	0.00						
135	0.00	0.00	0.00	0.00	0.00	0.00	0.00	0.00	0.00	0.00	0.00	0.00						
140	0.00	0.00	0.00	0.00	0.00	0.00	0.00	0.00	0.00	0.00	0.00	0.00						
145	0.00	0.00	0.00	0.00	0.00	0.00	0.00	0.00	0.00	0.00	0.00	0.00						
150	0.00	0.00	0.00	0.00	0.00	0.00	0.00	0.00	0.00	0.00	0.00	0.00						
155	0.00	0.00	0.00	0.00	0.00	0.00	0.00	0.00	0.00	0.00	0.00	0.00						
160	0.00	0.00	0.00	0.00	0.00	0.00	0.00	0.00	0.00	0.00	0.00	0.00						
165	0.00	0.00	0.00	0.00	0.00	0.00	0.00	0.00	0.00	0.00	0.00	0.00						
170	0.00	0.00	0.00	0.00	0.00	0.00	0.00	0.00	0.00	0.00	0.00	0.00						
175	0.00	0.00	0.00	0.00	0.00	0.00	0.00	0.00	0.00	0.00	0.00	0.00						
180	0.00	0.00	0.00	0.00	0.00	0.00	0.00	0.00	0.00	0.00	0.00	0.00						

C Range: 0 - 360DEG

C Interval: FOR A 15° LENS BEAM ANGLE

Test Speed: MEDIUM

Temperature: 77.54°F

Operators: zoe

Test Date: 2024-8-21

γ Range: 0 - 180DEG

γ Interval: 1.0DEG

Test System: EVERFINE GO-SPEX500_V1 SYSTEM V2.00.461

Humidity: 65.0%

Test Distance: 124.409" [K=1.0000]

Remarks: LAMP: BXRH-30G10T0-G-83 Ra: 90

LENS: PM-1084 15R

NO DRIVER: 500mA

30minutes warm-up