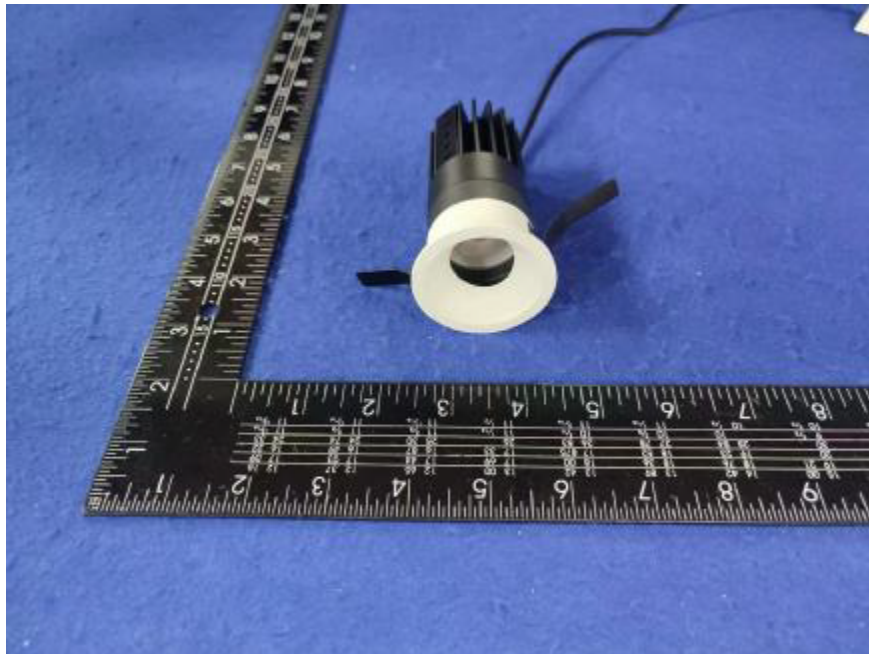


Photometric report for Flanged and Flangeless Trim



Light Output Ratio:	72.1%	
Luminaire Power:	8.824 W	
SHR Nominal:	0.75	Calculated using the TM5
SHR Maximum:	0.80	fine grid method.

C Range: 0 - 360DEG

C Interval: For a lens beam angle of 60°

Test Speed: HIGH

Temperature: 25.3

Operators: zoe

Test Date: 2024-8-14

Range: 0 - 180DEG

Interval: 1.0DEG

Test System: EVERFINE GO-SPEX500\_V1 SYSTEM V2.00.461

Humidity: 65.0%

Test Distance: 3.160m [K=1.0000]

Remarks: LAMP: BXRH-30G10T0-G-83 Ra: 90

LENS: PM-1084C 50R

NO DRIVER: 500mA

30minutes warm-up

LUMINOUS INTENSITY DISTRIBUTION DIAGRAM

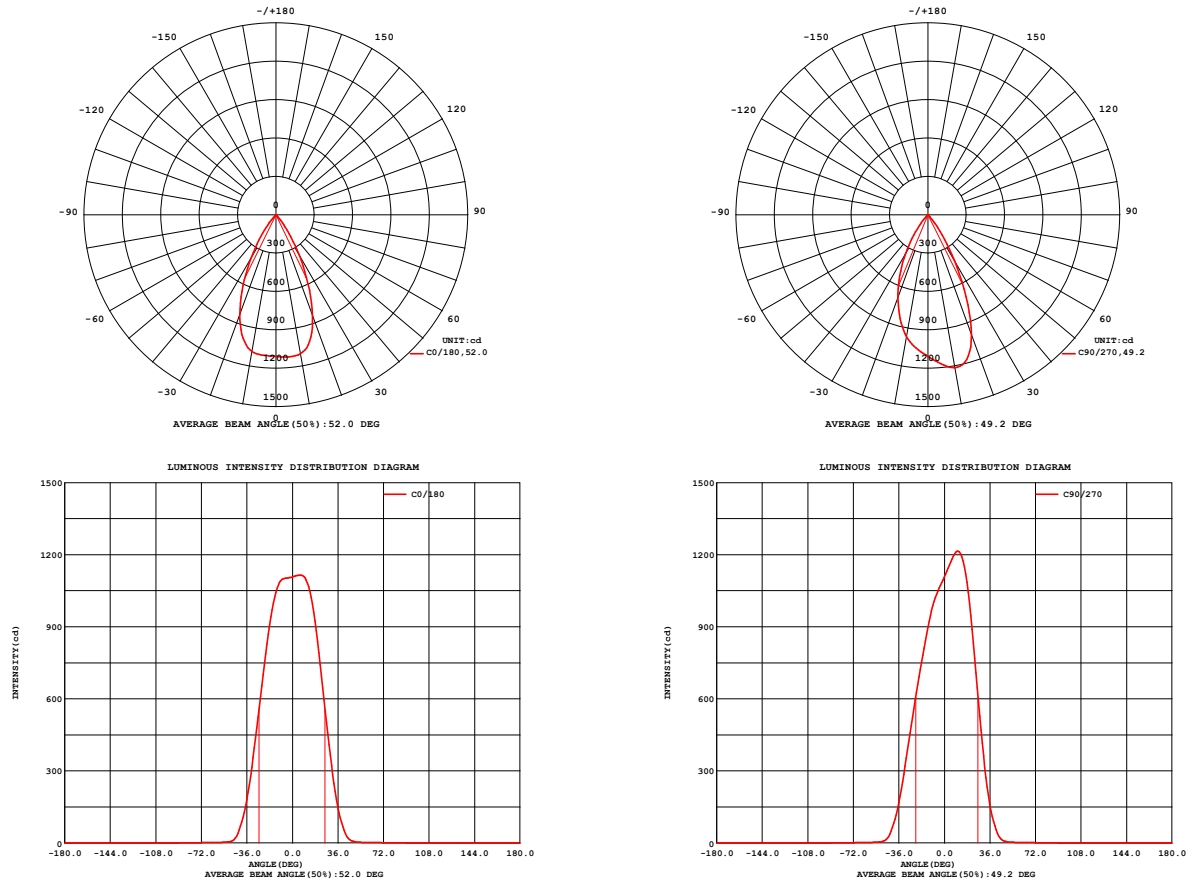


Fig. C0/C180

Fig. C90/C270

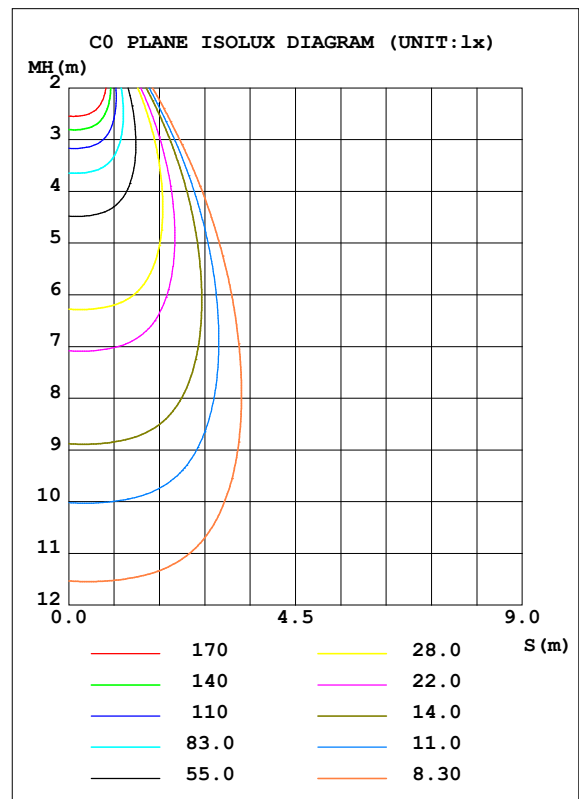
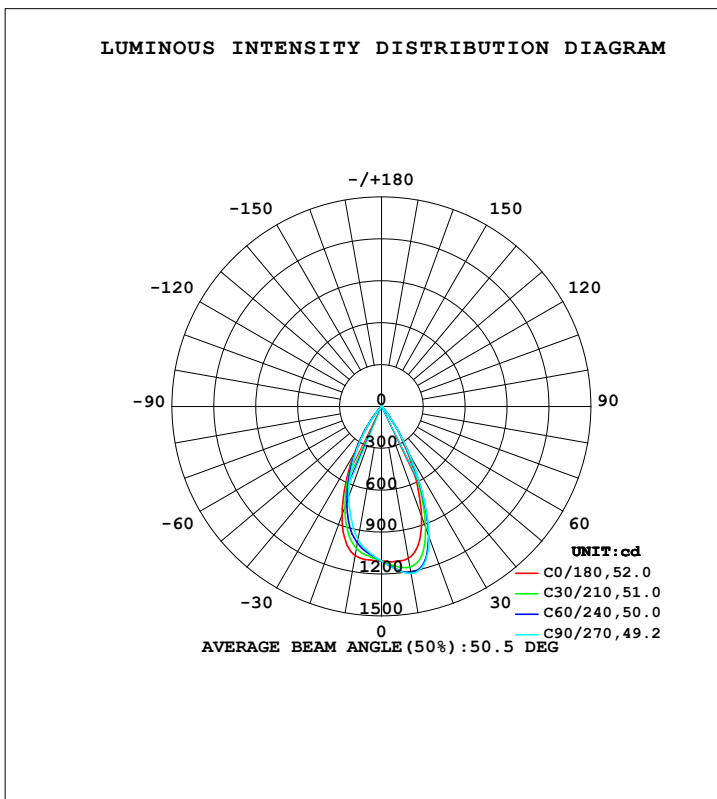
C Range: 0 - 360DEG  
C Interval: For a lens beam angle of 60°  
Test Speed: HIGH  
Temperature: 25.3  
Operators: zoe  
Test Date: 2024-8-14

Range: 0 - 180DEG  
Interval: 1.0DEG  
Test System: EVERFINE GO-SPEX500\_V1 SYSTEM V2.00.461  
Humidity: 65.0%  
Test Distance: 3.160m [K=1.0000]  
Remarks: LAMP: BXRH-30G10T0-G-83 Ra: 90  
LENS: PM-1084C 50R  
NO DRIVER: 500mA  
30minutes warm-up

## LUMINAIRE PHOTOMETRIC TEST REPORT

Test:U:17.648V I:0.5000A P:8.8240W PF:1.0000 Freq:49.99Hz Lamp Flux:1124.6x1 lm		
NAME: CTL-M-1.5-30K-36-RD-AD	TYPE:	WEIGHT:
SPEC.: 3000K	DIM.:	SERIAL No.: 2408141121
MFR.: MERCURY LIGHTING	SUR.: 0.001256m2	Shielding Angle:

DATA OF LAMP		PHOTOMETRIC DATA Eff: 91.88 lm/W			
MODEL	Brideglux	I <sub>max</sub> (cd)	1215	S/MH (C0/180)	0.80
NOMINAL POWER (W)	9	LOR (%)	72.1	S/MH (C90/270)	0.75
RATED VOLTAGE (V)	18	TOTAL FLUX (lm)	810.75	☒ UP, DN (C0-180)	0.0, 38.6
NOMINAL FLUX (lm)	1124.6	CIE CLASS	DIRECT	☒ UP, DN (C180-360)	0.0, 33.5
LAMPS INSIDE	1	☒ up (%)	0.0	CIBSE SHR NOM	0.75
TEST VOLTAGE (V)	18	☒ down (%)	72.1	CIBSE SHR MAX	0.80



C Range: 0 - 360DEG

C Interval: For a lens beam angle of 60°

Test Speed: HIGH

Temperature: 25.3

Operators: zoe

Test Date: 2024-8-14

Range: 0 - 180DEG

Interval: 1.0DEG

Test System: EVERFINE GO-SPEX500\_V1 SYSTEM V2.00.461

Humidity: 65.0%

Test Distance: 3.160m [K=1.0000]

Remarks: LAMP: BXRH-30G10T0-G-83 Ra: 90

LENS: PM-1084C 50R

NO DRIVER: 500mA

30minutes warm-up

**ZONAL FLUX DIAGRAM**
**ZONAL FLUX DIAGRAM:**

°	C0	C45	C90	C135	C180	C225	C270	C315	°	zone	total	%lum,lamp
10	1103	1187	1214	1161	1084	1014	968.1	1010	0- 10	105.4	105.4	13,9.37
20	838.7	955.5	997.2	936.1	829.7	748.6	690.8	727.0	10- 20	278.4	383.8	47.3,34.1
30	365.1	398.4	415.5	409.6	394.7	374.4	352.8	344.1	20- 30	276.0	659.8	81.4,58.7
40	68.06	67.96	72.29	80.77	87.51	85.90	81.73	72.48	30- 40	125.8	785.6	96.9,69.9
50	4.622	4.462	4.654	4.779	4.849	5.017	5.153	4.906	40- 50	19.16	804.8	99.3,71.6
60	2.238	2.255	2.268	2.342	2.329	2.419	2.465	2.389	50- 60	2.664	807.4	99.6,71.8
70	1.393	1.426	1.447	1.436	1.542	1.590	1.373	1.369	60- 70	1.984	809.4	99.8,72
80	0.5835	0.5988	0.6146	0.6152	0.6328	0.6163	0.5908	0.5783	70- 80	1.047	810.5	100,72.1
90	0	0	0	0	0	0	0	0	80- 90	0.2986	810.8	100,72.1
100	0	0	0	0	0	0	0	0	90-100	0	810.8	100,72.1
110	0	0	0	0	0	0	0	0	100-110	0	810.8	100,72.1
120	0	0	0	0	0	0	0	0	110-120	0	810.8	100,72.1
130	0	0	0	0	0	0	0	0	120-130	0	810.8	100,72.1
140	0	0	0	0	0	0	0	0	130-140	0	810.8	100,72.1
150	0	0	0	0	0	0	0	0	140-150	0	810.8	100,72.1
160	0	0	0	0	0	0	0	0	150-160	0	810.8	100,72.1
170	0	0	0	0	0	0	0	0	160-170	0	810.8	100,72.1
180	0	0	0	0	0	0	0	0	170-180	0	810.8	100,72.1
DEG	LUMINOUS INTENSITY:cd									UNIT:lm		

C Range: 0 - 360DEG

C Interval: For a lens beam angle of 60°

Test Speed: HIGH

Temperature:25.3

Operators:zoe

Test Date:2024-8-14

Range: 0 - 180DEG

Interval: 1.0DEG

Test System:EVERFINE GO-SPEX500\_V1 SYSTEM V2.00.461

Humidity:65.0%

Test Distance:3.160m [K=1.0000]

Remarks: LAMP:BXRH-30G10T0-G-83 Ra:90

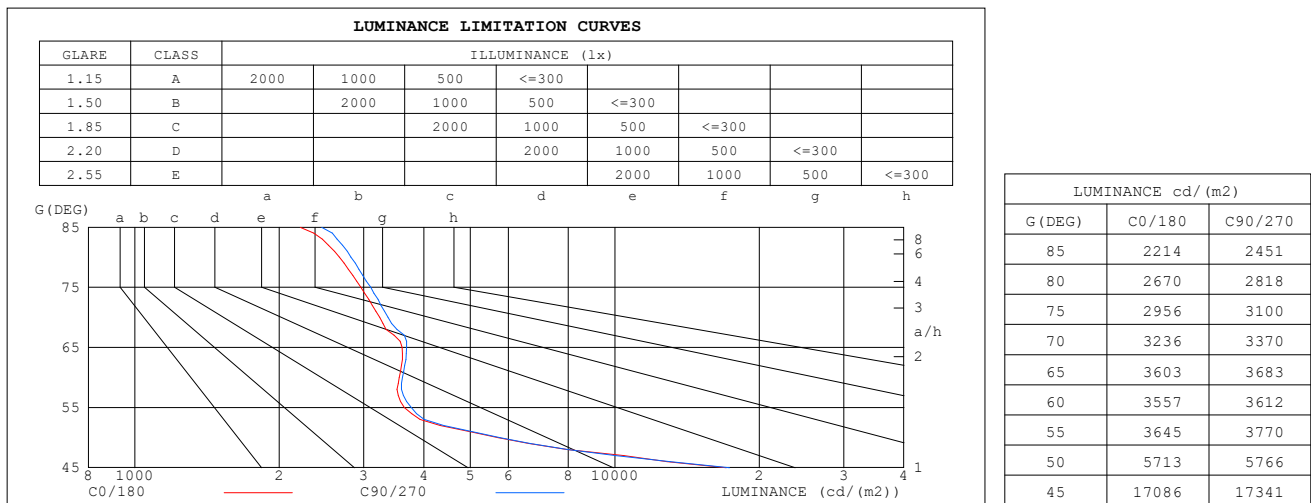
LENS:PM-1084C 50R

NO DRIVER:500mA

30minutes warm-up

## LUMINANCE LIMITATION CURVES

Test:U:17.648V I:0.5000A P:8.8240W PF:1.0000 Freq:49.99Hz Lamp Flux:1124.6x1 lm		
NAME: CTL-M-1.5-30K-36-RD-AD	TYPE:	WEIGHT:
SPEC.: 3000K	DIM.:	SERIAL No.: 2408141121
MFR.: MERCURY LIGHTING	SUR.: 0.001256m2	Shielding Angle:



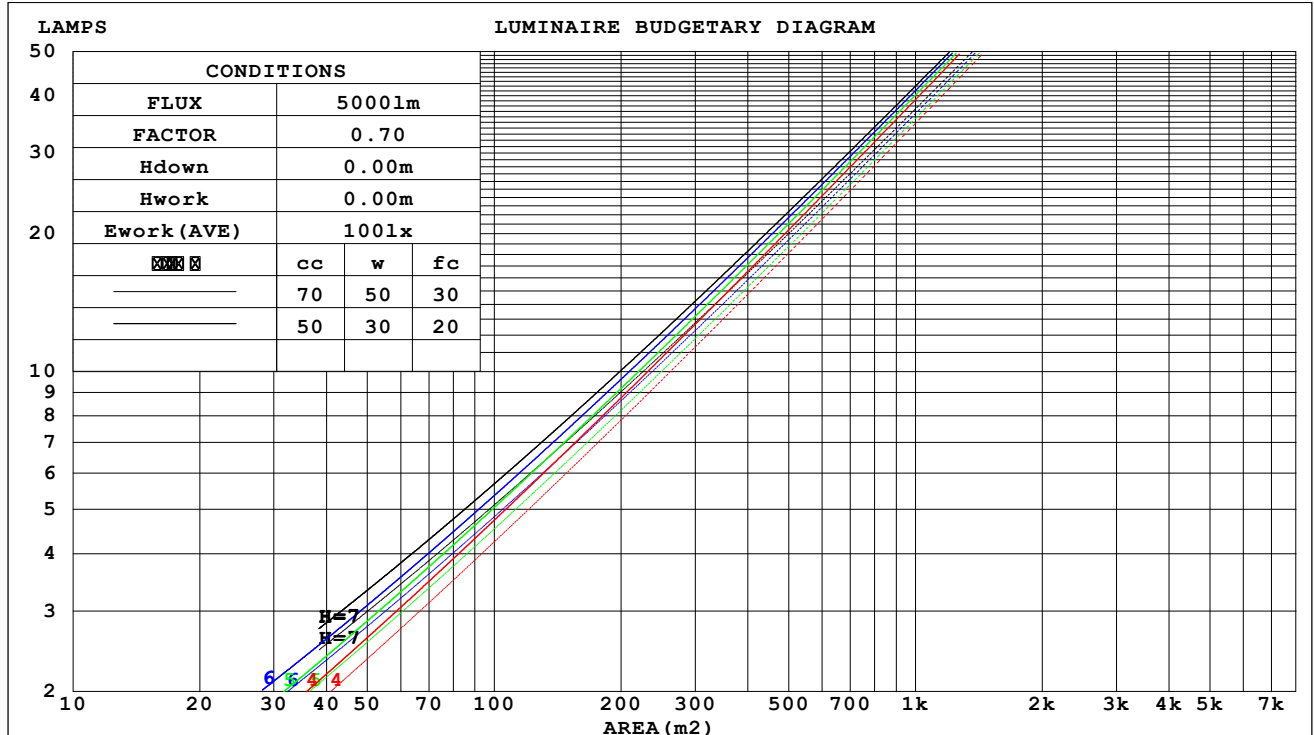
C Range: 0 - 360DEG  
 C Interval: For a lens beam angle of 60°  
 Test Speed: HIGH  
 Temperature:25.3  
 Operators:zoe  
 Test Date:2024-8-14

Range: 0 - 180DEG  
 Interval: 1.0DEG  
 Test System:EVERFINE GO-SPEX500\_V1 SYSTEM V2.00.461  
 Humidity:65.0%  
 Test Distance:3.160m [K=1.0000]  
 Remarks: LAMP:BXRH-30G10T0-G-83 Ra:90  
 LENS:PM-1084C 50R  
 NO DRIVER:500mA  
 30minutes warm-up

## CU AND LUMINAIRE BUDGETARY ESTIMATE DIAGRAM

Test:U:17.648V I:0.5000A P:8.8240W PF:1.0000 Freq:49.99Hz Lamp Flux:1124.6x1 lm		
NAME: CTL-M-1.5-30K-36-RD-AD	TYPE:	WEIGHT:
SPEC.: 3000K	DIM.:	SERIAL No.: 2408141121
MFR.: MERCURY LIGHTING	SUR.: 0.001256m2	Shielding Angle:

cc	80%			70%			50%			30%			10%			0
w	50%	30%	10%	50%	30%	10%	50%	30%	10%	50%	30%	10%	50%	30%	10%	0
fc	20%			20%			20%			20%			20%			0
RCR	RCR:Room Cavity Ratio															



**WEC AND CCEC**

Test:U:17.648V I:0.5000A P:8.8240W PF:1.0000 Freq:49.99Hz Lamp Flux:1124.6x1 lm		
NAME: CTL-M-1.5-30K-36-RD-AD	TYPE:	WEIGHT:
SPEC.: 3000K	DIM.:	SERIAL No.: 2408141121
MFR.: MERCURY LIGHTING	SUR.: 0.001256m2	Shielding Angle:

cc	80%			70%			50%			30%			10%			0	
w	50%	30%	10%	50%	30%	10%	50%	30%	10%	50%	30%	10%	50%	30%	10%	0	
fc	20%			20%			20%			20%			20%			0	
RCR	RCR:Room Cavity Ratio						Wall Exitance Coefficients(WEC)										
0.0																	
1.0	.121	.069	.022	.116	.066	.021	.107	.061	.020	.098	.057	.018	.091	.053	.017		
2.0	.115	.063	.019	.110	.061	.019	.103	.057	.018	.096	.054	.017	.089	.051	.016		
3.0	.109	.058	.017	.105	.056	.017	.099	.054	.016	.093	.051	.016	.087	.048	.015		
4.0	.103	.054	.016	.100	.053	.016	.095	.050	.015	.090	.048	.015	.085	.046	.014		
5.0	.098	.050	.015	.096	.049	.014	.091	.047	.014	.087	.046	.014	.083	.044	.013		
6.0	.094	.047	.013	.092	.046	.013	.088	.045	.013	.084	.044	.013	.080	.042	.013		
7.0	.090	.045	.013	.088	.044	.013	.084	.043	.012	.081	.041	.012	.078	.040	.012		
8.0	.086	.042	.012	.085	.042	.012	.081	.041	.012	.078	.040	.011	.075	.039	.011		
9.0	.083	.040	.011	.081	.040	.011	.078	.039	.011	.076	.038	.011	.073	.037	.011		
10.0	.080	.038	.011	.078	.038	.011	.076	.037	.010	.073	.036	.010	.071	.036	.010		

cc	80%			70%			50%			30%			10%			0
w	50%	30%	10%	50%	30%	10%	50%	30%	10%	50%	30%	10%	50%	30%	10%	0
fc	20%			20%			20%			20%			20%			0
RCR	RCR:Room Cavity Ratio						Ceiling Cavity Exitance Coefficients(CCEC)									
0.0	.137	.137	.137	.117	.117	.117	.080	.080	.080	.046	.046	.046	.015	.015	.015	
1.0	.123	.113	.105	.105	.097	.090	.072	.067	.062	.041	.039	.036	.013	.012	.012	
2.0	.111	.096	.082	.095	.082	.071	.065	.057	.050	.038	.033	.029	.012	.011	.009	
3.0	.102	.082	.066	.087	.071	.057	.060	.049	.040	.035	.029	.024	.011	.009	.008	
4.0	.094	.071	.053	.081	.061	.046	.056	.043	.033	.032	.025	.019	.010	.008	.006	
5.0	.088	.063	.044	.075	.054	.038	.052	.038	.027	.030	.022	.016	.010	.007	.005	
6.0	.082	.056	.037	.071	.048	.032	.049	.034	.023	.028	.020	.013	.009	.007	.004	
7.0	.077	.050	.031	.067	.044	.027	.046	.031	.019	.027	.018	.011	.009	.006	.004	
8.0	.073	.046	.027	.063	.040	.023	.044	.028	.017	.025	.016	.010	.008	.005	.003	
9.0	.070	.042	.023	.060	.036	.020	.042	.026	.014	.024	.015	.009	.008	.005	.003	
10.0	.066	.039	.020	.057	.034	.018	.040	.024	.013	.023	.014	.008	.008	.005	.002	

C Range: 0 - 360DEG

C Interval: For a lens beam angle of 60°

Test Speed: HIGH

Temperature:25.3

Operators:zoe

Test Date:2024-8-14

Range: 0 - 180DEG

Interval: 1.0DEG

Test System:EVERFINE GO-SPEX500\_V1 SYSTEM V2.00.461

Humidity:65.0%

Test Distance:3.160m [K=1.0000]

Remarks: LAMP:BXRH-30G10T0-G-83 Ra:90

LENS:PM-1084C 50R

NO DRIVER:500mA

30minutes warm-up

**UGR(Unified Glare Rating) Table**

Test:U:17.648V I:0.5000A P:8.8240W PF:1.0000 Freq:49.99Hz Lamp Flux:1124.6x1 lm											
NAME: CTL-M-1.5-30K-36-RD-AD					TYPE:			WEIGHT:			
SPEC.: 3000K					DIM.:			SERIAL No.: 2408141121			
MFR.: MERCURY LIGHTING					SUR.: 0.001256m2			Shielding Angle:			
ceiling/cavity	0.7	0.7	0.5	0.5	0.3	0.7	0.7	0.5	0.5	0.3	
walls	0.5	0.3	0.5	0.3	0.3	0.5	0.3	0.5	0.3	0.3	
working plane	0.2	0.2	0.2	0.2	0.2	0.2	0.2	0.2	0.2	0.2	
Room dimensions		Viewed crosswise					Viewed endwise				
x = 2H y = 2H	2H	19.6	20.5	19.8	20.6	20.8	20.0	20.8	20.2	21.0	21.2
	3H	19.5	20.3	19.7	20.5	20.7	19.8	20.6	20.1	20.8	21.0
	4H	19.4	20.1	19.6	20.4	20.6	19.7	20.5	20.0	20.7	20.9
	6H	19.3	20.0	19.6	20.3	20.5	19.7	20.4	19.9	20.6	20.9
	8H	19.3	19.9	19.6	20.2	20.5	19.6	20.3	19.9	20.6	20.8
	12H	19.2	19.9	19.5	20.1	20.4	19.6	20.2	19.9	20.5	20.8
4H	2H	19.4	20.1	19.6	20.3	20.6	19.7	20.5	20.0	20.7	20.9
	3H	19.2	19.9	19.5	20.1	20.4	19.6	20.2	19.9	20.5	20.8
	4H	19.1	19.7	19.5	20.0	20.3	19.5	20.1	19.8	20.4	20.7
	6H	19.1	19.6	19.4	19.9	20.3	19.4	19.9	19.8	20.3	20.6
	8H	19.0	19.5	19.4	19.8	20.2	19.4	19.8	19.8	20.2	20.6
	12H	19.0	19.4	19.4	19.8	20.2	19.3	19.8	19.7	20.1	20.5
8H	4H	19.0	19.5	19.4	19.8	20.2	19.3	19.8	19.7	20.2	20.5
	6H	18.9	19.3	19.3	19.7	20.1	19.3	19.7	19.7	20.1	20.5
	8H	18.9	19.2	19.3	19.6	20.1	19.2	19.6	19.7	20.0	20.4
	12H	18.8	19.1	19.3	19.6	20.0	19.2	19.5	19.6	19.9	20.4
12H	4H	18.9	19.4	19.4	19.8	20.1	19.3	19.7	19.7	20.1	20.5
	6H	18.9	19.2	19.3	19.6	20.1	19.2	19.6	19.7	20.0	20.4
	8H	18.8	19.1	19.3	19.6	20.0	19.2	19.5	19.6	19.9	20.4
Variations with the observer position at spacings(CIE Pub.117):											
S = 1.0H	+ 3.9 / - 9.8					+ 4.1 / -10.0					
1.5H	+ 6.5 / - 9.5					+ 6.7 / - 9.7					
2.0H	+ 5.0 / - 1.4					+ 5.0 / - 1.4					

CIE Pub.117, 1125 lm Total Lamp Luminous Flux Correct (8log(F/F0) = 0.4)  
 Area: 0.001256 m2

C Range: 0 - 360DEG	Range: 0 - 180DEG
C Interval: For a lens beam angle of 60°	Interval: 1.0DEG
Test Speed: HIGH	Test System:EVERFINE GO-SPEX500_V1 SYSTEM V2.00.461
Temperature:25.3	Humidity:65.0%
Operators:zoe	Test Distance:3.160m [K=1.0000]
Test Date:2024-8-14	Remarks: LAMP:BXRH-30G10T0-G-83 Ra:90
	LENS:PM-1084C 50R
	NO DRIVER:500mA
	30minutes warm-up



## UTILIZATION FACTORS TABLE

Test:U:17.648V I:0.5000A P:8.8240W PF:1.0000 Freq:49.99Hz Lamp Flux:1124.6x1 lm		
NAME: CTL-M-1.5-30K-36-RD-AD	TYPE:	WEIGHT:
SPEC.: 3000K	DIM.:	SERIAL No.: 2408141121
MFR.: MERCURY LIGHTING	SUR.: 0.001256m2	Shielding Angle:

REFLECTANCE										
Ceiling	0.8	0.8	0.8	0.7	0.7	0.7	0.5	0.5	0.5	0
Walls	0.7	0.5	0.3	0.7	0.5	0.3	0.7	0.5	0.3	0
Working plane	0.2	0.2	0.2	0.2	0.2	0.2	0.2	0.2	0.2	0
ROOM INDEX	UTILIZATION FACTORS (PERCENT) $k(RI) \times RCR = 5$									
$k = 0.60$	65	60	58	64	60	58	64	60	58	55
0.80	70	66	63	69	66	63	68	65	63	61
1.00	73	69	66	72	69	66	71	68	66	63
1.25	75	72	70	75	71	69	73	71	69	66
1.50	77	74	72	76	73	71	75	72	71	68
2.00	79	76	74	78	75	73	76	74	72	69
2.50	80	77	75	79	77	75	77	75	73	69
3.00	81	79	77	80	78	76	77	76	74	70
4.00	82	81	79	81	79	78	78	77	76	71
5.00	83	82	81	82	80	79	79	78	77	72
ROOM INDEX	UF (total)									Direct
According to DIN EN 13032-2 2004			Suspended					SHRNOM = 1.25		

C Range: 0 - 360DEG

C Interval: For a lens beam angle of 60°

Test Speed: HIGH

Temperature: 25.3

Operators: zoe

Test Date: 2024-8-14

Range: 0 - 180DEG

Interval: 1.0DEG

Test System: EVERFINE GO-SPEX500\_V1 SYSTEM V2.00.461

Humidity: 65.0%

Test Distance: 3.160m [K=1.0000]

Remarks: LAMP: BXRH-30G10T0-G-83 Ra: 90

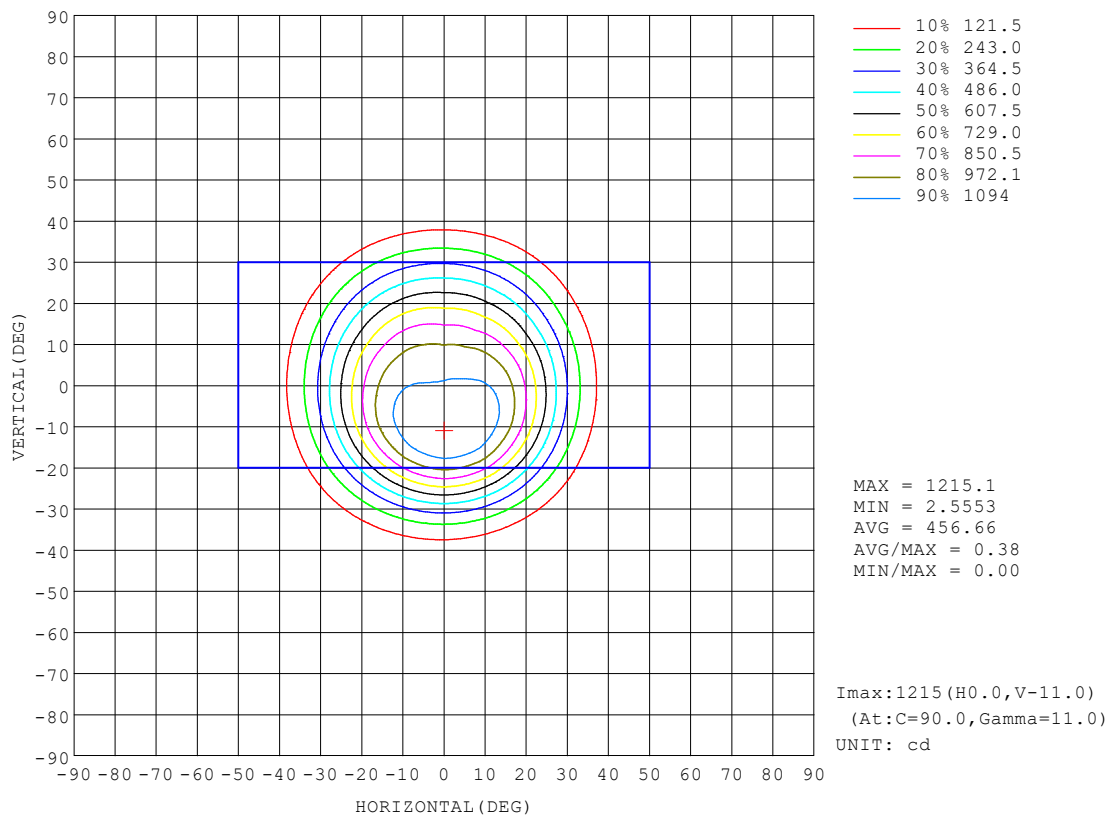
LENS: PM-1084C 50R

NO DRIVER: 500mA

30minutes warm-up

## ISOCANDELA DIAGRAM

Test:U:17.648V I:0.5000A P:8.8240W PF:1.0000 Freq:49.99Hz Lamp Flux:1124.6x1 lm		
NAME: CTL-M-1.5-30K-36-RD-AD	TYPE:	WEIGHT:
SPEC.: 3000K	DIM.:	SERIAL No.: 2408141121
MFR.: MERCURY LIGHTING	SUR.: 0.001256m2	Shielding Angle:



C Range: 0 - 360DEG

C Interval: For a lens beam angle of 60°

Test Speed: HIGH

Temperature:25.3

Operators:zoe

Test Date:2024-8-14

Range: 0 - 180DEG

Interval: 1.0DEG

Test System:EVERFINE GO-SPEX500\_V1 SYSTEM V2.00.461

Humidity:65.0%

Test Distance:3.160m [K=1.0000]

Remarks: LAMP:BXRH-30G10T0-G-83 Ra:90

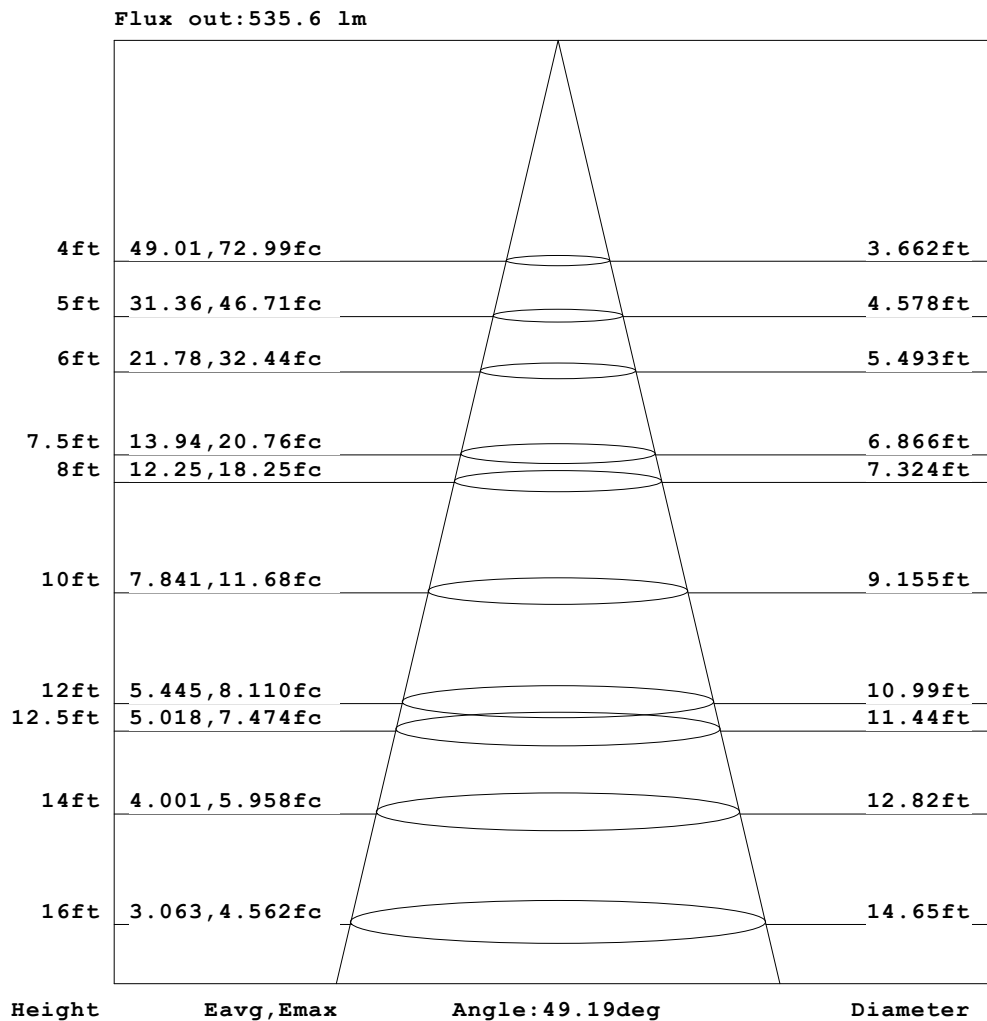
LENS:PM-1084C 50R

NO DRIVER:500mA

30minutes warm-up

**AAI Figure**

Test:U:17.648V I:0.5000A P:8.8240W PF:1.0000 Freq:49.99Hz Lamp Flux:1124.6x1 lm		
NAME: CTL-M-1.5-30K-36-RD-AD	TYPE:	WEIGHT:
SPEC.: 3000K	DIM.:	SERIAL No.: 2408141121
MFR.: MERCURY LIGHTING	SUR.: 0.001256m2	Shielding Angle:



Note: The Curves indicate the illuminated area and the average illumination when the luminaire is at different distance.

C Range: 0 - 360DEG

C Interval: For a lens beam angle of 60°

Test Speed: HIGH

Temperature: 25.3

Operators: zoe

Test Date: 2024-8-14

Range: 0 - 180DEG

Interval: 1.0DEG

Test System: EVERFINE GO-SPEX500\_V1 SYSTEM V2.00.461

Humidity: 65.0%

Test Distance: 3.160m [K=1.0000]

Remarks: LAMP: BXRH-30G10T0-G-83 Ra: 90

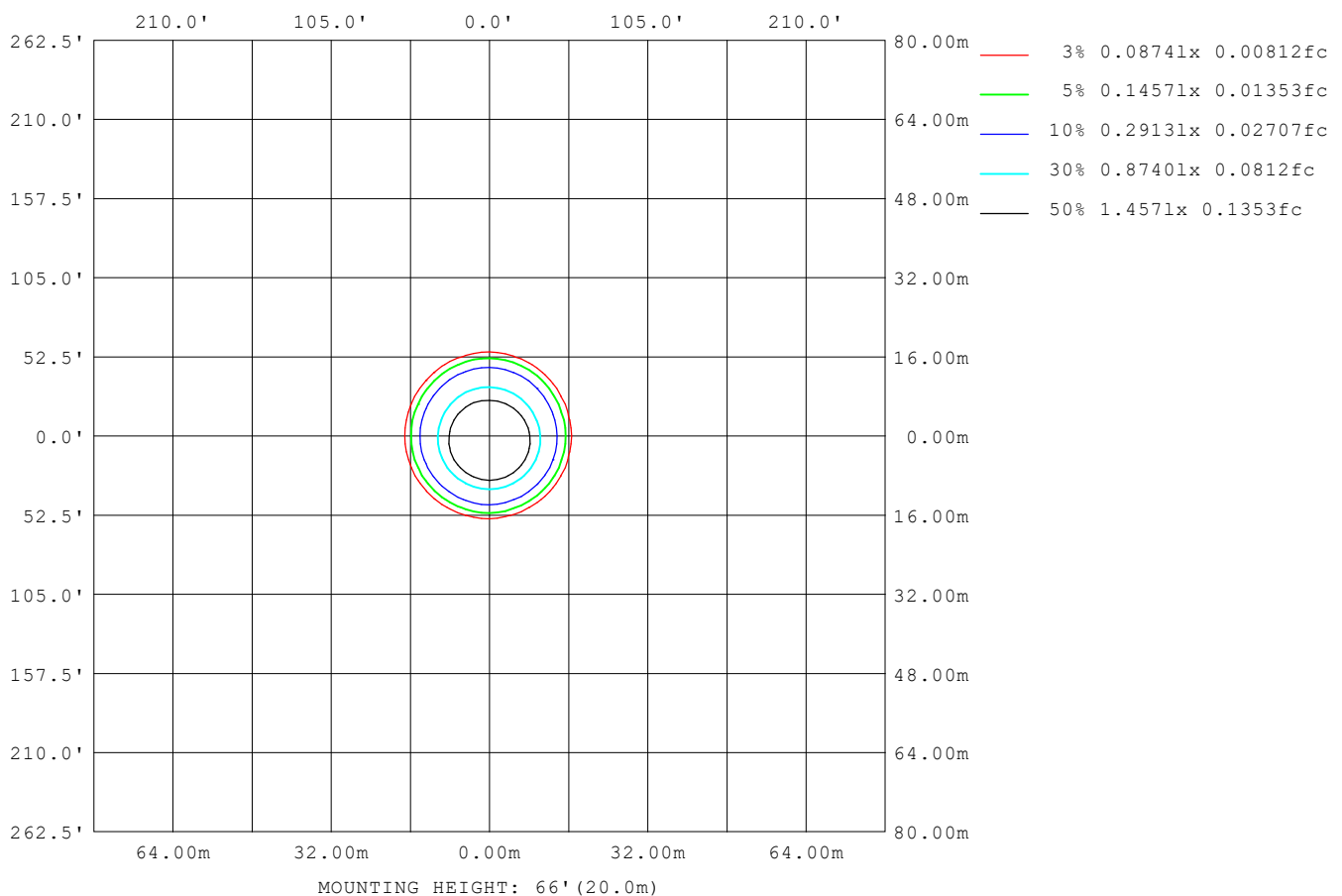
LENS: PM-1084C 50R

NO DRIVER: 500mA

30minutes warm-up

**ISOLUX DIAGRAM**

<b>Test:</b> U:17.648V I:0.5000A P:8.8240W PF:1.0000 Freq:49.99Hz <b>Lamp Flux:</b> 1124.6x1 lm		
<b>NAME:</b> CTL-M-1.5-30K-36-RD-AD	<b>TYPE:</b>	<b>WEIGHT:</b>
<b>SPEC.:</b> 3000K	<b>DIM.:</b>	<b>SERIAL No.:</b> 2408141121
<b>MFR.:</b> MERCURY LIGHTING	<b>SUR.:</b> 0.001256m2	<b>Shielding Angle:</b>


**C Range:** 0 - 360DEG

**C Interval:** For a lens beam angle of 60°

**Test Speed:** HIGH

**Temperature:**25.3

**Operators:**zoe

**Test Date:**2024-8-14

**Range:** 0 - 180DEG

**Interval:** 1.0DEG

**Test System:**EVERFINE GO-SPEX500\_V1 SYSTEM V2.00.461

**Humidity:**65.0%

**Test Distance:**3.160m [K=1.0000]

**Remarks:** LAMP:BXRH-30G10T0-G-83 Ra:90

**LENS:**PM-1084C 50R

**NO DRIVER:**500mA

**30minutes warm-up**

**LED Avg.L Report**

Test:U:17.648V I:0.5000A P:8.8240W PF:1.0000 Freq:49.99Hz Lamp Flux:1124.6x1 lm		
NAME: CTL-M-1.5-30K-36-RD-AD	TYPE:	WEIGHT:
SPEC.: 3000K	DIM.:	SERIAL No.: 2408141121
MFR.: MERCURY LIGHTING	SUR.: 0.001256m2	Shielding Angle:

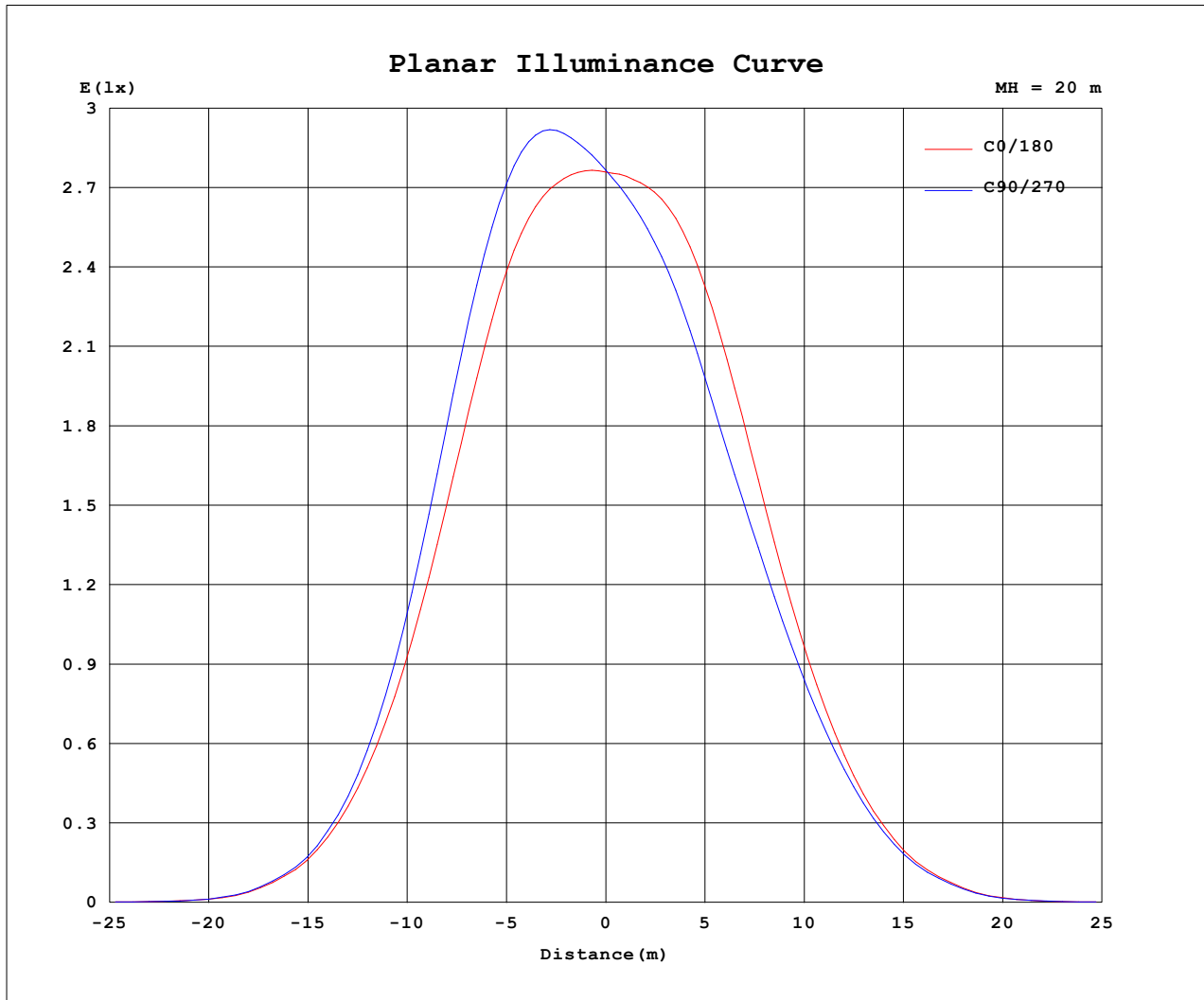
AvgL	cd/m2
L_0~180 (65) av	3847
L_0~180 (75) av	3036
L_0~180 (85) av	2449
L_90~270 (65) av	3972
L_90~270 (75) av	3022
L_90~270 (85) av	2455
L_45 (65) av	3878
L_45 (75) av	3017
L_45 (85) av	2410

Standard: GB/T 29293-2012

C Range: 0 - 360DEG  
 C Interval: For a lens beam angle of 60°  
 Test Speed: HIGH  
 Temperature:25.3  
 Operators:zoe  
 Test Date:2024-8-14

Range: 0 - 180DEG  
 Interval: 1.0DEG  
 Test System:EVERFINE GO-SPEX500\_V1 SYSTEM V2.00.461  
 Humidity:65.0%  
 Test Distance:3.160m [K=1.0000]  
 Remarks: LAMP:BXRH-30G10T0-G-83 Ra:90  
 LENS:PM-1084C 50R  
 NO DRIVER:500mA  
 30minutes warm-up

### Planar Illuminance Curve



C Range: 0 - 360DEG

C Interval: For a lens beam angle of 60°

Test Speed: HIGH

Temperature: 25.3

Operators: zoe

Test Date: 2024-8-14

Range: 0 - 180DEG

Interval: 1.0DEG

Test System: EVERFINE GO-SPEX500\_V1 SYSTEM V2.00.461

Humidity: 65.0%

Test Distance: 3.160m [K=1.0000]

Remarks: LAMP: BXRH-30G10T0-G-83 Ra: 90

LENS: PM-1084C 50R

NO DRIVER: 500mA

30minutes warm-up

**LUMINOUS DISTRIBUTION INTENSITY DATA**

Test:U:17.648V I:0.5000A P:8.8240W PF:1.0000 Freq:49.99Hz Lamp Flux:1124.6x1 lm		
NAME: CTL-M-1.5-30K-36-RD-AD	TYPE:	WEIGHT:
SPEC.: 3000K	DIM.:	SERIAL No.: 2408141121
MFR.: MERCURY LIGHTING	SUR.: 0.001256m2	Shielding Angle:

Table--1

UNIT: cd

C (DEG) (DEG)	0	30	60	90	120	150	180	210	240	270	300	330						
0	1106	1106	1106	1106	1106	1106	1106	1106	1106	1106	1106	1106						
5	1114	1147	1166	1168	1155	1131	1102	1076	1056	1048	1057	1081						
10	1103	1166	1208	1214	1185	1138	1084	1033	994	968	985	1036						
15	1023	1108	1164	1172	1137	1077	999	932	886	840	862	931						
20	839	925	986	997	964	908	830	769	728	691	702	752						
25	596	654	696	707	689	656	610	572	549	524	524	541						
30	365	390	407	416	412	407	395	379	370	353	347	341						
35	181	187	188	197	200	210	212	206	204	195	188	175						
40	68.1	68.6	67.3	72.3	77.4	84.1	87.5	87.2	84.6	81.7	76.4	68.6						
45	15.2	14.7	14.3	15.4	16.6	20.1	21.1	19.8	20.4	18.9	18.7	16.3						
50	4.62	4.49	4.43	4.65	4.80	4.76	4.85	4.96	5.07	5.15	5.09	4.72						
55	2.63	2.61	2.62	2.72	2.79	2.77	2.67	2.70	2.74	2.82	2.86	2.71						
60	2.24	2.25	2.26	2.27	2.35	2.34	2.33	2.40	2.44	2.46	2.48	2.30						
65	1.92	1.94	1.95	1.95	1.97	2.07	2.17	2.26	2.31	2.26	2.06	1.92						
70	1.39	1.42	1.43	1.45	1.44	1.43	1.54	1.66	1.52	1.37	1.37	1.37						
75	0.96	0.98	0.99	1.01	1.00	1.00	1.01	1.00	0.98	0.96	0.95	0.95						
80	0.58	0.59	0.60	0.61	0.61	0.62	0.63	0.62	0.61	0.59	0.58	0.58						
85	0.24	0.25	0.25	0.27	0.27	0.28	0.29	0.29	0.28	0.27	0.25	0.25						
90	0.00	0.00	0.00	0.00	0.00	0.00	0.00	0.00	0.00	0.00	0.00	0.00						
95	0.00	0.00	0.00	0.00	0.00	0.00	0.00	0.00	0.00	0.00	0.00	0.00						
100	0.00	0.00	0.00	0.00	0.00	0.00	0.00	0.00	0.00	0.00	0.00	0.00						
105	0.00	0.00	0.00	0.00	0.00	0.00	0.00	0.00	0.00	0.00	0.00	0.00						
110	0.00	0.00	0.00	0.00	0.00	0.00	0.00	0.00	0.00	0.00	0.00	0.00						
115	0.00	0.00	0.00	0.00	0.00	0.00	0.00	0.00	0.00	0.00	0.00	0.00						
120	0.00	0.00	0.00	0.00	0.00	0.00	0.00	0.00	0.00	0.00	0.00	0.00						
125	0.00	0.00	0.00	0.00	0.00	0.00	0.00	0.00	0.00	0.00	0.00	0.00						
130	0.00	0.00	0.00	0.00	0.00	0.00	0.00	0.00	0.00	0.00	0.00	0.00						
135	0.00	0.00	0.00	0.00	0.00	0.00	0.00	0.00	0.00	0.00	0.00	0.00						
140	0.00	0.00	0.00	0.00	0.00	0.00	0.00	0.00	0.00	0.00	0.00	0.00						
145	0.00	0.00	0.00	0.00	0.00	0.00	0.00	0.00	0.00	0.00	0.00	0.00						
150	0.00	0.00	0.00	0.00	0.00	0.00	0.00	0.00	0.00	0.00	0.00	0.00						
155	0.00	0.00	0.00	0.00	0.00	0.00	0.00	0.00	0.00	0.00	0.00	0.00						
160	0.00	0.00	0.00	0.00	0.00	0.00	0.00	0.00	0.00	0.00	0.00	0.00						
165	0.00	0.00	0.00	0.00	0.00	0.00	0.00	0.00	0.00	0.00	0.00	0.00						
170	0.00	0.00	0.00	0.00	0.00	0.00	0.00	0.00	0.00	0.00	0.00	0.00						
175	0.00	0.00	0.00	0.00	0.00	0.00	0.00	0.00	0.00	0.00	0.00	0.00						
180	0.00	0.00	0.00	0.00	0.00	0.00	0.00	0.00	0.00	0.00	0.00	0.00						

C Range: 0 - 360DEG

C Interval: For a lens beam angle of 60°

Test Speed: HIGH

Temperature:25.3

Operators:zoe

Test Date:2024-8-14

Range: 0 - 180DEG

Interval: 1.0DEG

Test System:EVERFINE GO-SPEX500\_V1 SYSTEM V2.00.461

Humidity:65.0%

Test Distance:3.160m [K=1.0000]

Remarks: LAMP:BXRH-30G10T0-G-83 Ra:90

LENS:PM-1084C 50R

NO DRIVER:500mA

30minutes warm-up