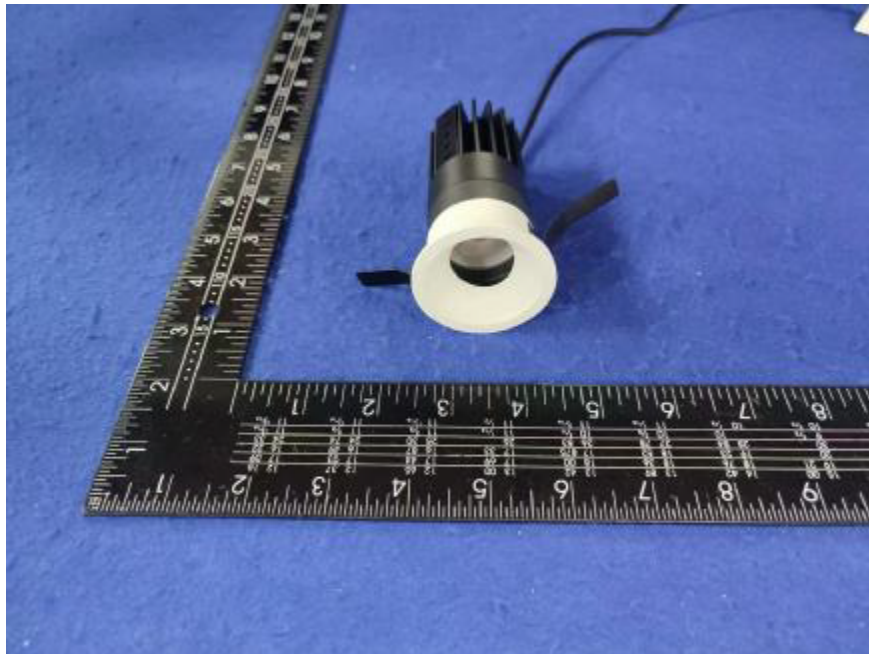


Photometric report for Flanged and Flangeless Trim



Light Output Ratio:	74.9%	
Luminaire Power:	8.826 W	
SHR Nominal:	0.50	Calculated using the TM5
SHR Maximum:	0.65	fine grid method.

C Range: 0 - 360DEG  
C Interval: For a lens beam angle of 36°  
Test Speed: HIGH  
Temperature: 25.3  
Operators: zoe  
Test Date: 2024-8-14

γ Range: 0 - 180DEG  
γ Interval: 1.0DEG  
Test System: EVERFINE GO-SPEX500\_V1 SYSTEM V2.00.461  
Humidity: 65.0%  
Test Distance: 3.160m [K=1.0000]  
Remarks: LAMP: BXRH-30G10T0-G-83 Ra: 90  
LENS: PM-1084B 36R  
NO DRIVER: 500mA  
30minutes warm-up

LUMINOUS INTENSITY DISTRIBUTION DIAGRAM

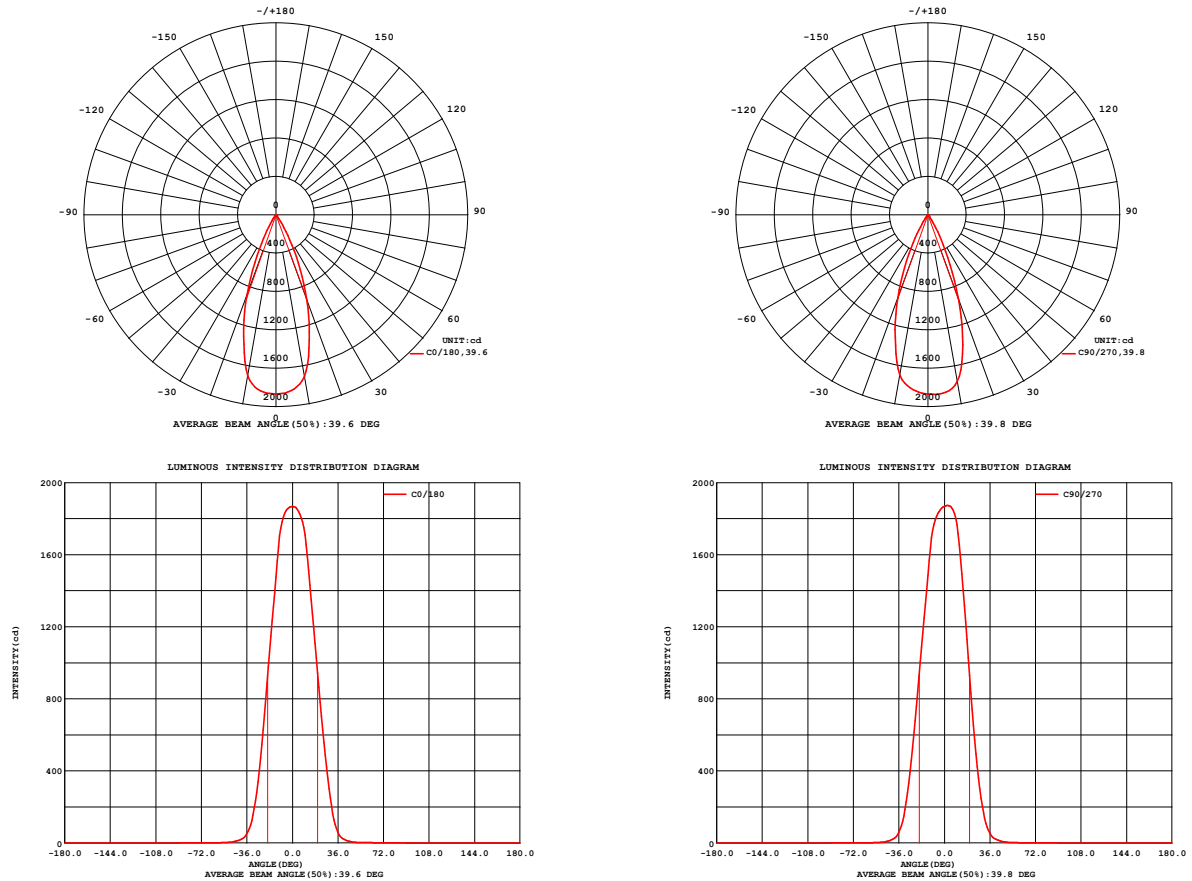


Fig. C0/C180

Fig. C90/C270

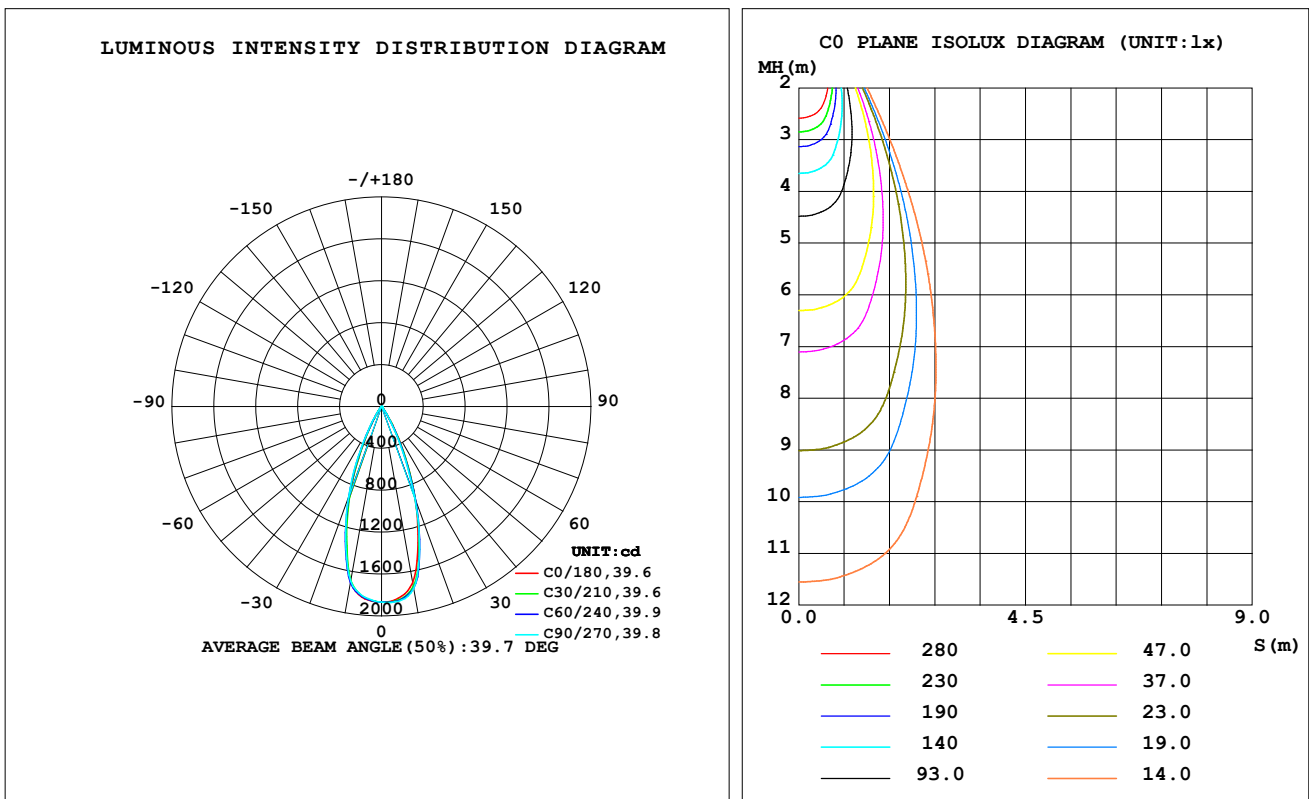
C Range: 0 - 360DEG  
C Interval: For a lens beam angle of 36°  
Test Speed: HIGH  
Temperature: 25.3  
Operators: zoe  
Test Date: 2024-8-14

γ Range: 0 - 180DEG  
γ Interval: 1.0DEG  
Test System: EVERFINE GO-SPEX500\_V1 SYSTEM V2.00.461  
Humidity: 65.0%  
Test Distance: 3.160m [K=1.0000]  
Remarks: LAMP: BXRH-30G10T0-G-83 Ra: 90  
LENS: PM-1084B 36R  
NO DRIVER: 500mA  
30minutes warm-up

**LUMINAIRE PHOTOMETRIC TEST REPORT**

Test:U:17.652V I:0.5000A P:8.8260W PF:1.0000 Freq:49.99Hz Lamp Flux:1124.6x1 lm		
NAME: CTL-M-1.5-30K-36-RD-AD	TYPE:	WEIGHT:
SPEC.: 3000K	DIM.:	SERIAL No.: 2408141120
MFR.: MERCURY LIGHTING	SUR.: 0.001256m2	Shielding Angle:

DATA OF LAMP		PHOTOMETRIC DATA Eff: 95.43 lm/W			
MODEL	Brideglux	I <sub>max</sub> (cd)	1874	S/MH (C0/180)	0.61
NOMINAL POWER (W)	9	LOR (%)	74.9	S/MH (C90/270)	0.63
RATED VOLTAGE (V)	18	TOTAL FLUX (lm)	842.26	η UP, DN (C0-180)	0.0, 37.8
NOMINAL FLUX (lm)	1124.6	CIE CLASS	DIRECT	η UP, DN (C180-360)	0.0, 37.1
LAMPS INSIDE	1	η up (%)	0.0	CIBSE SHR NOM	0.50
TEST VOLTAGE (V)	18	η down (%)	74.9	CIBSE SHR MAX	0.65



C Range: 0 - 360DEG

C Interval: For a lens beam angle of 36°

Test Speed: HIGH

Temperature: 25.3

Operators: zoe

Test Date: 2024-8-14

γ Range: 0 - 180DEG

γ Interval: 1.0DEG

Test System: EVERFINE GO-SPEX500\_V1 SYSTEM V2.00.461

Humidity: 65.0%

Test Distance: 3.160m [K=1.0000]

Remarks: LAMP: BXRH-30G10T0-G-83 Ra: 90

LENS: PM-1084B 36R

NO DRIVER: 500mA

30minutes warm-up

### ZONAL FLUX DIAGRAM

#### ZONAL FLUX DIAGRAM:

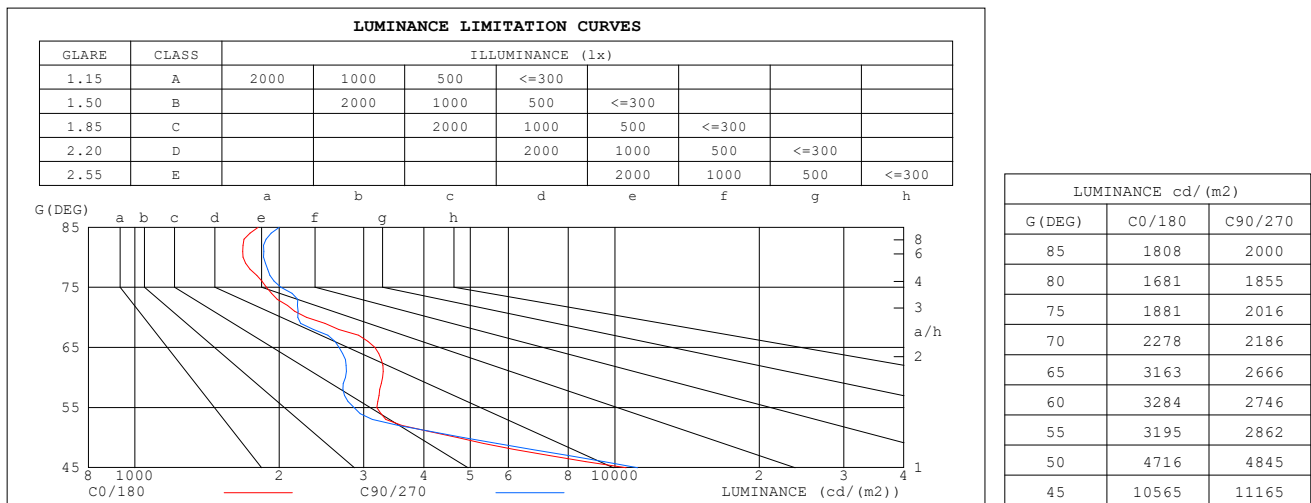
$\gamma$	C0	C45	C90	C135	C180	C225	C270	C315	$\gamma$	$\Phi$ zone	$\Phi$ total	%lum,lamp
10	1710	1754	1765	1730	1704	1700	1695	1698	0- 10	172.4	172.4	20.5,15.3
20	942.5	951.1	929.2	898.5	886.1	896.6	923.9	931.9	10- 20	368.3	540.7	64.2,48.1
30	249.1	226.6	207.4	188.5	193.9	205.2	228.1	249.1	20- 30	235.7	776.3	92.2,69
40	24.20	23.76	23.93	22.55	22.23	22.62	23.83	24.82	30- 40	53.09	829.4	98.5,73.8
50	3.805	5.248	3.912	3.930	3.580	3.476	3.588	3.617	40- 50	8.293	837.7	99.5,74.5
60	2.061	3.178	1.725	1.617	1.604	1.626	1.603	1.514	50- 60	2.147	839.9	99.7,74.7
70	0.9782	1.561	0.9390	0.8231	0.8293	0.8599	0.7300	0.7773	60- 70	1.535	841.4	99.9,74.8
80	0.3665	0.4706	0.4047	0.3474	0.3293	0.3047	0.3069	0.3522	70- 80	0.6510	842.1	100,74.9
90	0	0	0	0	0	0	0	0	80- 90	0.2058	842.3	100,74.9
100	0	0	0	0	0	0	0	0	90-100	0	842.3	100,74.9
110	0	0	0	0	0	0	0	0	100-110	0	842.3	100,74.9
120	0	0	0	0	0	0	0	0	110-120	0	842.3	100,74.9
130	0	0	0	0	0	0	0	0	120-130	0	842.3	100,74.9
140	0	0	0	0	0	0	0	0	130-140	0	842.3	100,74.9
150	0	0	0	0	0	0	0	0	140-150	0	842.3	100,74.9
160	0	0	0	0	0	0	0	0	150-160	0	842.3	100,74.9
170	0	0	0	0	0	0	0	0	160-170	0	842.3	100,74.9
180	0	0	0	0	0	0	0	0	170-180	0	842.3	100,74.9
DEG	LUMINOUS INTENSITY:cd									UNIT:lm		

C Range: 0 - 360DEG  
 C Interval:For a lens beam angle of 36°  
 Test Speed: HIGH  
 Temperature:25.3  
 Operators:zoe  
 Test Date:2024-8-14

$\gamma$  Range: 0 - 180DEG  
 $\gamma$  Interval: 1.0DEG  
 Test System:EVERFINE GO-SPEX500\_V1 SYSTEM V2.00.461  
 Humidity:65.0%  
 Test Distance:3.160m [K=1.0000]  
 Remarks: LAMP:BXRH-30G10T0-G-83 Ra:90  
 LENS:PM-1084B 36R  
 NO DRIVER:500mA  
 30minutes warm-up

**LUMINANCE LIMITATION CURVES**

<b>Test:</b> U:17.652V I:0.5000A P:8.8260W PF:1.0000 Freq:49.99Hz <b>Lamp Flux:</b> 1124.6x1 lm		
<b>NAME:</b> CTL-M-1.5-30K-36-RD-AD	<b>TYPE:</b>	<b>WEIGHT:</b>
<b>SPEC.:</b> 3000K	<b>DIM.:</b>	<b>SERIAL No.:</b> 2408141120
<b>MFR.:</b> MERCURY LIGHTING	<b>SUR.:</b> 0.001256m2	<b>Shielding Angle:</b>



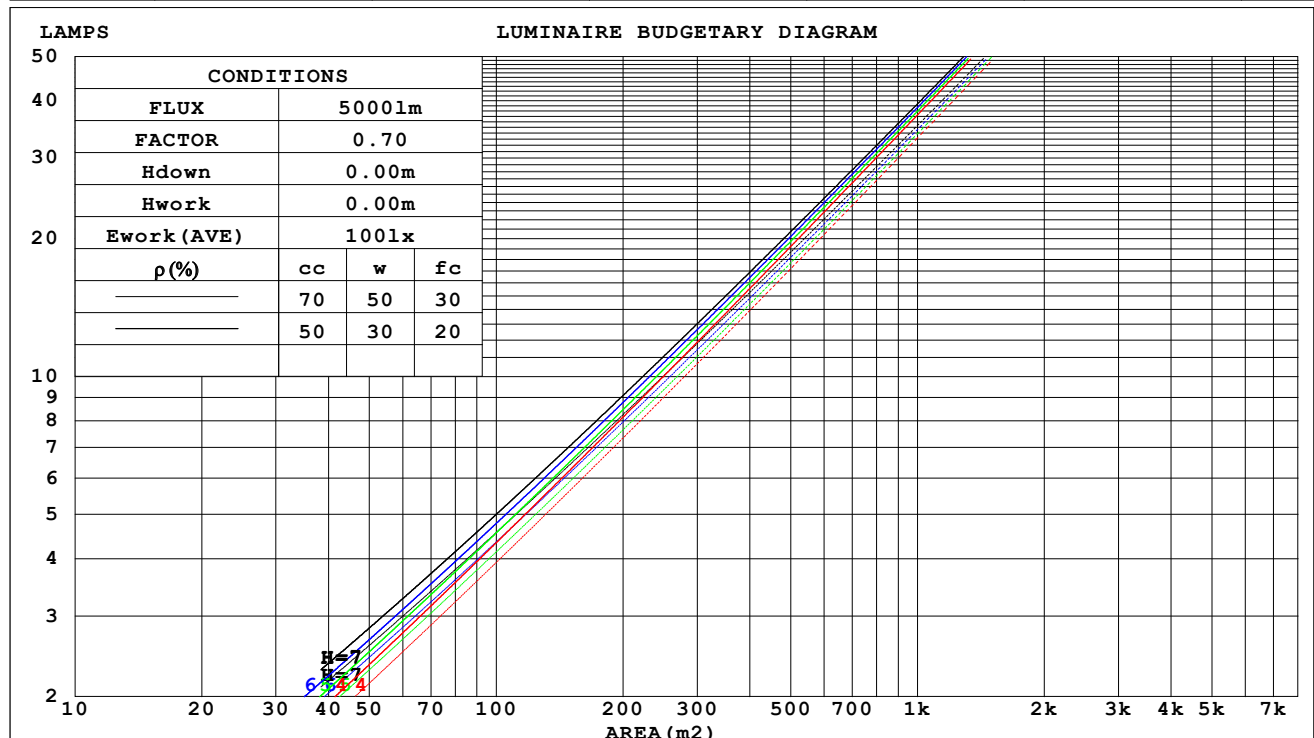
**C Range:** 0 - 360DEG  
**C Interval:** For a lens beam angle of 36°  
**Test Speed:** HIGH  
**Temperature:** 25.3  
**Operators:** zoe  
**Test Date:** 2024-8-14

**γ Range:** 0 - 180DEG  
**γ Interval:** 1.0DEG  
**Test System:** EVERFINE GO-SPEX500\_V1 SYSTEM V2.00.461  
**Humidity:** 65.0%  
**Test Distance:** 3.160m [K=1.0000]  
**Remarks:** LAMP: BXRH-30G10T0-G-83 Ra:90  
 LENS: PM-1084B 36R  
 NO DRIVER: 500mA  
 30minutes warm-up

## CU AND LUMINAIRE BUDGETARY ESTIMATE DIAGRAM

Test:U:17.652V I:0.5000A P:8.8260W PF:1.0000 Freq:49.99Hz Lamp Flux:1124.6x1 lm		
NAME: CTL-M-1.5-30K-36-RD-AD	TYPE:	WEIGHT:
SPEC.: 3000K	DIM.:	SERIAL No.: 2408141120
MFR.: MERCURY LIGHTING	SUR.: 0.001256m2	Shielding Angle:

pcc	80%			70%			50%			30%			10%			0
pw	50%	30%	10%	50%	30%	10%	50%	30%	10%	50%	30%	10%	50%	30%	10%	0
pfc	20%			20%			20%			20%			20%			0
RCR	RCR:Room Cavity Ratio															



C Range: 0 - 360DEG

C Interval: For a lens beam angle of 36°

Test Speed: HIGH

Temperature: 25.3

Operators: zoe

Test Date: 2024-8-14

γ Range: 0 - 180DEG

γ Interval: 1.0DEG

Test System: EVERFINE GO-SPEX500\_V1 SYSTEM V2.00.461

Humidity: 65.0%

Test Distance: 3.160m [K=1.0000]

Remarks: LAMP: BXRH-30G10T0-G-83 Ra: 90

LENS: PM-1084B 36R

NO DRIVER: 500mA

30minutes warm-up

**WEC AND CCEC**

Test:U:17.652V I:0.5000A P:8.8260W PF:1.0000 Freq:49.99Hz Lamp Flux:1124.6x1 lm		
NAME: CTL-M-1.5-30K-36-RD-AD	TYPE:	WEIGHT:
SPEC.: 3000K	DIM.:	SERIAL No.: 2408141120
MFR.: MERCURY LIGHTING	SUR.: 0.001256m2	Shielding Angle:

pcc	80%			70%			50%			30%			10%			0
pw	50%	30%	10%	50%	30%	10%	50%	30%	10%	50%	30%	10%	50%	30%	10%	0
pfc	20%			20%			20%			20%			20%			0
RCR	RCR:Room Cavity Ratio						Wall Exitance Coefficients(WEC)									
0.0																
1.0	.114	.065	.020	.109	.062	.020	.099	.057	.018	.091	.052	.017	.083	.048	.016	
2.0	.107	.058	.018	.103	.057	.017	.095	.053	.016	.088	.049	.015	.081	.046	.014	
3.0	.100	.053	.016	.097	.052	.016	.090	.049	.015	.084	.046	.014	.079	.044	.014	
4.0	.095	.049	.015	.092	.048	.014	.086	.046	.014	.081	.044	.013	.076	.042	.013	
5.0	.090	.046	.013	.088	.045	.013	.083	.043	.013	.078	.041	.012	.074	.040	.012	
6.0	.086	.043	.012	.084	.042	.012	.079	.041	.012	.076	.039	.012	.072	.038	.011	
7.0	.082	.040	.011	.080	.040	.011	.076	.039	.011	.073	.037	.011	.070	.036	.011	
8.0	.078	.038	.011	.077	.038	.011	.073	.037	.010	.070	.036	.010	.068	.035	.010	
9.0	.075	.036	.010	.074	.036	.010	.071	.035	.010	.068	.034	.010	.066	.033	.010	
10.0	.072	.035	.010	.071	.034	.010	.068	.034	.009	.066	.033	.009	.064	.032	.009	

pcc	80%			70%			50%			30%			10%			0
pw	50%	30%	10%	50%	30%	10%	50%	30%	10%	50%	30%	10%	50%	30%	10%	0
pfc	20%			20%			20%			20%			20%			0
RCR	RCR:Room Cavity Ratio						Ceiling Cavity Exitance Coefficients(CCEC)									
0.0	.143	.143	.143	.122	.122	.122	.083	.083	.083	.048	.048	.048	.015	.015	.015	
1.0	.127	.118	.110	.109	.101	.095	.074	.070	.065	.043	.040	.038	.014	.013	.012	
2.0	.114	.099	.087	.098	.086	.075	.067	.059	.052	.039	.034	.031	.012	.011	.010	
3.0	.104	.085	.070	.089	.073	.061	.061	.051	.043	.035	.030	.025	.011	.010	.008	
4.0	.095	.074	.057	.081	.064	.050	.056	.044	.035	.032	.026	.021	.010	.008	.007	
5.0	.088	.065	.048	.075	.056	.041	.052	.039	.029	.030	.023	.017	.010	.007	.006	
6.0	.081	.057	.040	.070	.050	.035	.048	.035	.025	.028	.020	.015	.009	.007	.005	
7.0	.076	.051	.034	.065	.045	.030	.045	.031	.021	.026	.018	.013	.008	.006	.004	
8.0	.072	.046	.029	.062	.040	.025	.043	.028	.018	.025	.017	.011	.008	.005	.004	
9.0	.068	.042	.025	.058	.037	.022	.040	.026	.016	.024	.015	.009	.008	.005	.003	
10.0	.064	.039	.022	.055	.034	.019	.038	.024	.014	.022	.014	.008	.007	.005	.003	

C Range: 0 - 360DEG

C Interval:For a lens beam angle of 36°

Test Speed: HIGH

Temperature:25.3

Operators:zoe

Test Date:2024-8-14

γ Range: 0 - 180DEG

γ Interval: 1.0DEG

Test System:EVERFINE GO-SPEX500\_V1 SYSTEM V2.00.461

Humidity:65.0%

Test Distance:3.160m [K=1.0000]

Remarks: LAMP:BXRH-30G10T0-G-83 Ra:90

LENS:PM-1084B 36R

NO DRIVER:500mA

30minutes warm-up

**UGR(Unified Glare Rating) Table**

Test:U:17.652V I:0.5000A P:8.8260W PF:1.0000 Freq:49.99Hz Lamp Flux:1124.6x1 lm										
NAME: CTL-M-1.5-30K-36-RD-AD					TYPE:			WEIGHT:		
SPEC.: 3000K					DIM.:			SERIAL No.: 2408141120		
MFR.: MERCURY LIGHTING					SUR.: 0.001256m2			Shielding Angle:		
ceiling/cavity	0.7	0.7	0.5	0.5	0.3	0.7	0.7	0.5	0.5	0.3
walls	0.5	0.3	0.5	0.3	0.3	0.5	0.3	0.5	0.3	0.3
working plane	0.2	0.2	0.2	0.2	0.2	0.2	0.2	0.2	0.2	0.2
Room dimensions	Viewed crosswise					Viewed endwise				
x = 2H y = 2H	14.6	15.4	14.8	15.5	15.7	13.7	14.5	14.0	14.7	14.8
3H	14.5	15.2	14.8	15.4	15.6	13.7	14.4	13.9	14.6	14.7
4H	14.5	15.1	14.7	15.3	15.6	13.6	14.3	13.9	14.5	14.7
6H	14.4	15.0	14.7	15.3	15.5	13.5	14.2	13.8	14.4	14.7
8H	14.4	15.0	14.7	15.2	15.5	13.5	14.1	13.8	14.4	14.6
12H	14.3	14.9	14.6	15.2	15.4	13.5	14.1	13.8	14.3	14.6
4H 2H	14.4	15.1	14.7	15.3	15.5	13.6	14.3	13.9	14.5	14.7
3H	14.4	15.0	14.7	15.2	15.5	13.5	14.1	13.8	14.4	14.6
4H	14.3	14.9	14.7	15.2	15.5	13.5	14.0	13.8	14.3	14.6
6H	14.3	14.7	14.6	15.1	15.4	13.4	13.9	13.8	14.2	14.6
8H	14.2	14.7	14.6	15.0	15.4	13.4	13.8	13.8	14.2	14.6
12H	14.2	14.6	14.6	15.0	15.3	13.4	13.8	13.8	14.1	14.5
8H 4H	14.2	14.6	14.6	15.0	15.4	13.4	13.8	13.8	14.2	14.5
6H	14.1	14.5	14.6	14.9	15.3	13.3	13.7	13.8	14.1	14.5
8H	14.1	14.4	14.6	14.9	15.3	13.3	13.6	13.8	14.0	14.5
12H	14.1	14.4	14.5	14.8	15.3	13.3	13.6	13.8	14.0	14.5
12H 4H	14.2	14.6	14.6	14.9	15.3	13.3	13.7	13.7	14.1	14.5
6H	14.1	14.4	14.5	14.8	15.3	13.3	13.6	13.7	14.0	14.5
8H	14.1	14.3	14.5	14.8	15.3	13.3	13.5	13.7	14.0	14.5
Variations with the observer position at spacings(CIE Pub.117) :										
S = 1.0H	+ 3.3 / - 4.3					+ 3.3 / - 4.3				
1.5H	+ 5.5 / - 4.8					+ 5.5 / - 4.4				
2.0H	+ 2.5 / - 1.8					+ 3.1 / - 1.9				

CIE Pub.117, 1125 lm Total Lamp Luminous Flux Correct (8log(F/F0) = 0.4)  
 Area: 0.001256 m2

C Range: 0 - 360DEG  
 C Interval: For a lens beam angle of 36°  
 Test Speed: HIGH  
 Temperature: 25.3  
 Operators: zoe  
 Test Date: 2024-8-14

γ Range: 0 - 180DEG  
 γ Interval: 1.0DEG  
 Test System: EVERFINE GO-SPEX500\_V1 SYSTEM V2.00.461  
 Humidity: 65.0%  
 Test Distance: 3.160m [K=1.0000]  
 Remarks: LAMP: BXRH-30G10T0-G-83 Ra: 90  
 LENS: PM-1084B 36R  
 NO DRIVER: 500mA  
 30minutes warm-up



## UTILIZATION FACTORS TABLE

Test:U:17.652V I:0.5000A P:8.8260W PF:1.0000 Freq:49.99Hz Lamp Flux:1124.6x1 lm		
NAME: CTL-M-1.5-30K-36-RD-AD	TYPE:	WEIGHT:
SPEC.: 3000K	DIM.:	SERIAL No.: 2408141120
MFR.: MERCURY LIGHTING	SUR.: 0.001256m2	Shielding Angle:

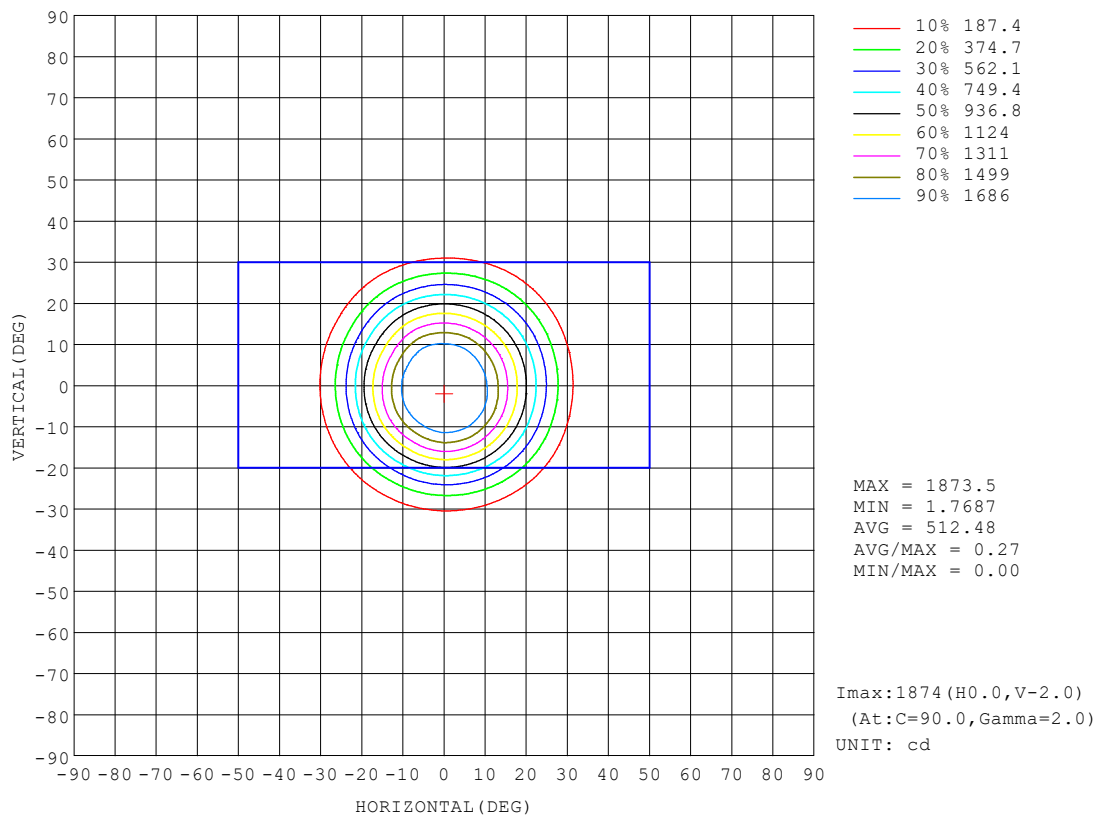
REFLECTANCE										
Ceiling	0.8	0.8	0.8	0.7	0.7	0.7	0.5	0.5	0.5	0
Walls	0.7	0.5	0.3	0.7	0.5	0.3	0.7	0.5	0.3	0
Working plane	0.2	0.2	0.2	0.2	0.2	0.2	0.2	0.2	0.2	0
ROOM INDEX	UTILIZATION FACTORS (PERCENT) $k(RI) \times RCR = 5$									
$k = 0.60$	68	64	61	68	63	61	67	63	61	58
0.80	73	69	67	73	69	67	72	68	66	64
1.00	76	72	70	75	72	70	74	72	69	66
1.25	79	75	73	78	75	72	76	74	72	69
1.50	80	77	75	80	77	75	78	76	74	71
2.00	82	79	77	81	79	77	79	77	75	72
2.50	83	81	79	82	80	78	80	78	77	72
3.00	84	82	80	83	81	79	81	79	78	73
4.00	86	84	82	84	83	81	82	80	79	74
5.00	87	85	84	85	84	83	82	81	80	75
ROOM INDEX	UF (total)									Direct
According to DIN EN 13032-2 2004			Suspended					SHRNOM = 1.25		

C Range: 0 - 360DEG  
 C Interval: For a lens beam angle of 36°  
 Test Speed: HIGH  
 Temperature: 25.3  
 Operators: zoe  
 Test Date: 2024-8-14

γ Range: 0 - 180DEG  
 γ Interval: 1.0DEG  
 Test System: EVERFINE GO-SPEX500\_V1 SYSTEM V2.00.461  
 Humidity: 65.0%  
 Test Distance: 3.160m [K=1.0000]  
 Remarks: LAMP: BXRH-30G10T0-G-83 Ra: 90  
 LENS: PM-1084B 36R  
 NO DRIVER: 500mA  
 30minutes warm-up

## ISOCANDELA DIAGRAM

Test:U:17.652V I:0.5000A P:8.8260W PF:1.0000 Freq:49.99Hz Lamp Flux:1124.6x1 lm		
NAME: CTL-M-1.5-30K-36-RD-AD	TYPE:	WEIGHT:
SPEC.: 3000K	DIM.:	SERIAL No.: 2408141120
MFR.: MERCURY LIGHTING	SUR.: 0.001256m2	Shielding Angle:

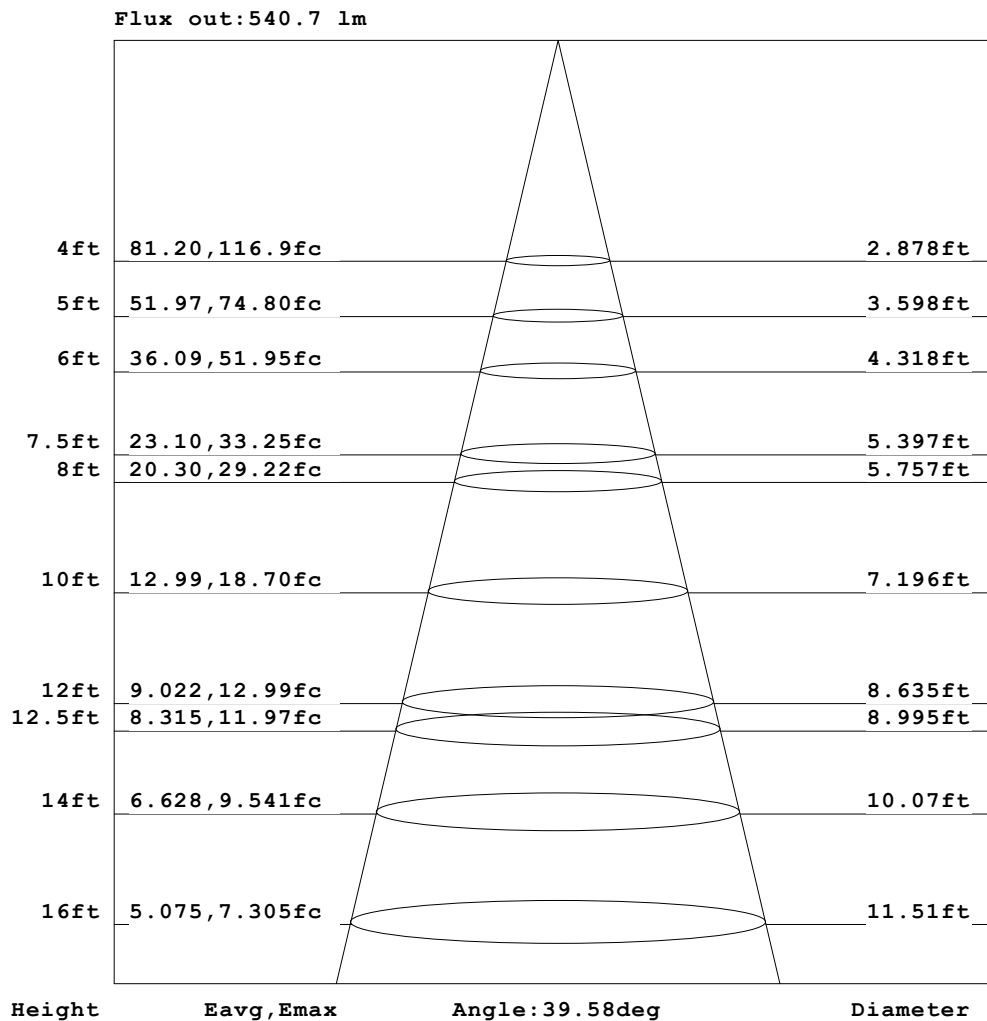


C Range: 0 - 360DEG  
 C Interval:For a lens beam angle of 36°  
 Test Speed: HIGH  
 Temperature:25.3  
 Operators:zoe  
 Test Date:2024-8-14

γ Range: 0 - 180DEG  
 γ Interval: 1.0DEG  
 Test System:EVERFINE GO-SPEX500\_V1 SYSTEM V2.00.461  
 Humidity:65.0%  
 Test Distance:3.160m [K=1.0000]  
 Remarks: LAMP:BXRH-30G10T0-G-83 Ra:90  
 LENS:PM-1084B 36R  
 NO DRIVER:500mA  
 30minutes warm-up

**AAI Figure**

Test:U:17.652V I:0.5000A P:8.8260W PF:1.0000 Freq:49.99Hz Lamp Flux:1124.6x1 lm		
NAME: CTL-M-1.5-30K-36-RD-AD	TYPE:	WEIGHT:
SPEC.: 3000K	DIM.:	SERIAL No.: 2408141120
MFR.: MERCURY LIGHTING	SUR.: 0.001256m2	Shielding Angle:



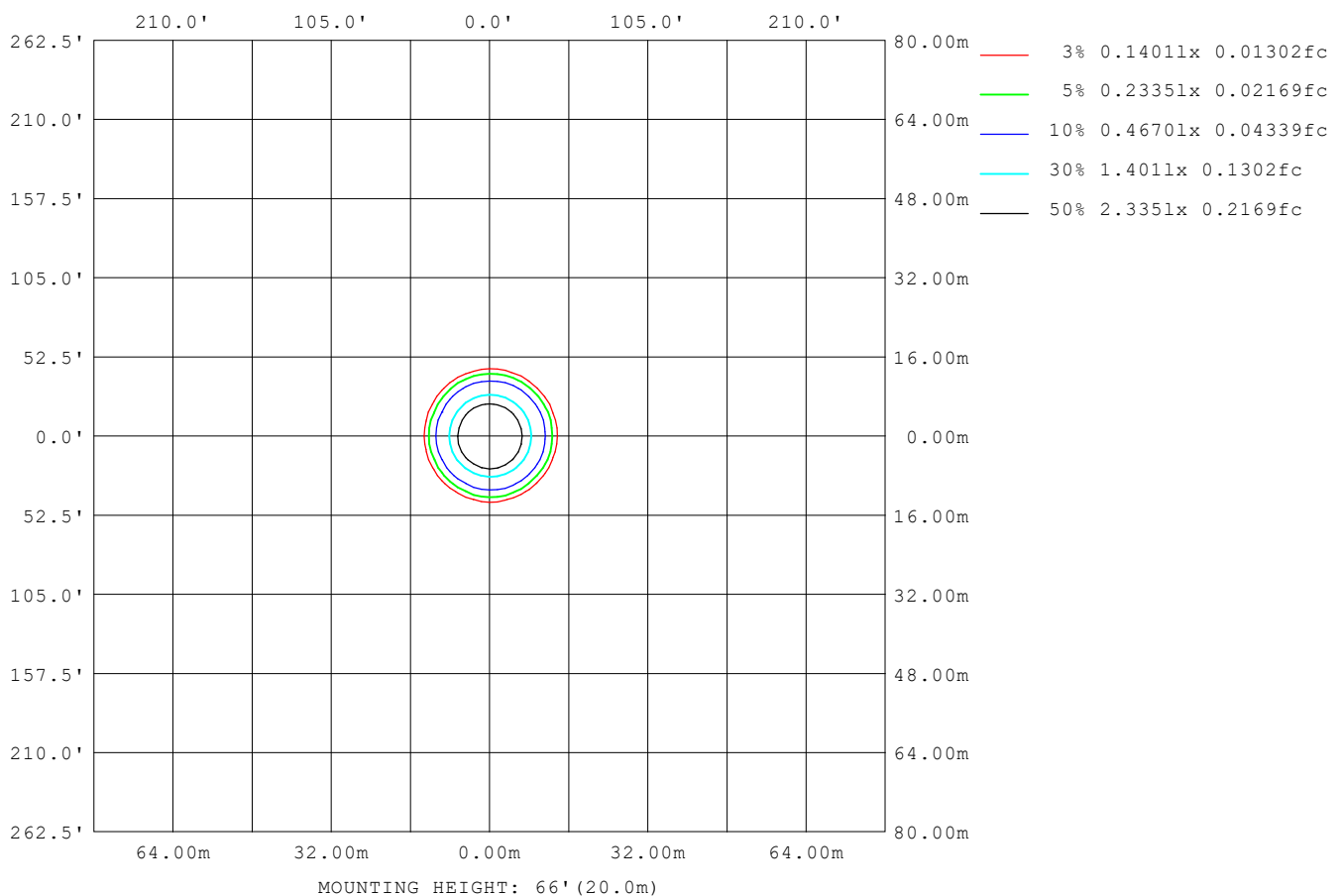
Note: The Curves indicate the illuminated area and the average illumination when the luminaire is at different distance.

C Range: 0 - 360DEG  
 C Interval: For a lens beam angle of 36°  
 Test Speed: HIGH  
 Temperature: 25.3  
 Operators: zoe  
 Test Date: 2024-8-14

γ Range: 0 - 180DEG  
 γ Interval: 1.0DEG  
 Test System: EVERFINE GO-SPEX500\_V1 SYSTEM V2.00.461  
 Humidity: 65.0%  
 Test Distance: 3.160m [K=1.0000]  
 Remarks: LAMP: BXRH-30G10T0-G-83 Ra: 90  
 LENS: PM-1084B 36R  
 NO DRIVER: 500mA  
 30minutes warm-up

**ISOLUX DIAGRAM**

<b>Test:</b> U:17.652V I:0.5000A P:8.8260W PF:1.0000 Freq:49.99Hz <b>Lamp Flux:</b> 1124.6x1 lm		
<b>NAME:</b> CTL-M-1.5-30K-36-RD-AD	<b>TYPE:</b>	<b>WEIGHT:</b>
<b>SPEC.:</b> 3000K	<b>DIM.:</b>	<b>SERIAL No.:</b> 2408141120
<b>MFR.:</b> MERCURY LIGHTING	<b>SUR.:</b> 0.001256m2	<b>Shielding Angle:</b>



**C Range:** 0 - 360DEG  
**C Interval:** For a lens beam angle of 36°  
**Test Speed:** HIGH  
**Temperature:** 25.3  
**Operators:** zoe  
**Test Date:** 2024-8-14

**γ Range:** 0 - 180DEG  
**γ Interval:** 1.0DEG  
**Test System:** EVERFINE GO-SPEX500\_V1 SYSTEM V2.00.461  
**Humidity:** 65.0%  
**Test Distance:** 3.160m [K=1.0000]  
**Remarks:** LAMP: BXRH-30G10T0-G-83 Ra:90  
 LENS: PM-1084B 36R  
 NO DRIVER: 500mA  
 30minutes warm-up

**LED Avg.L Report**

Test:U:17.652V I:0.5000A P:8.8260W PF:1.0000 Freq:49.99Hz Lamp Flux:1124.6x1 lm		
NAME: CTL-M-1.5-30K-36-RD-AD	TYPE:	WEIGHT:
SPEC.: 3000K	DIM.:	SERIAL No.: 2408141120
MFR.: MERCURY LIGHTING	SUR.: 0.001256m2	Shielding Angle:

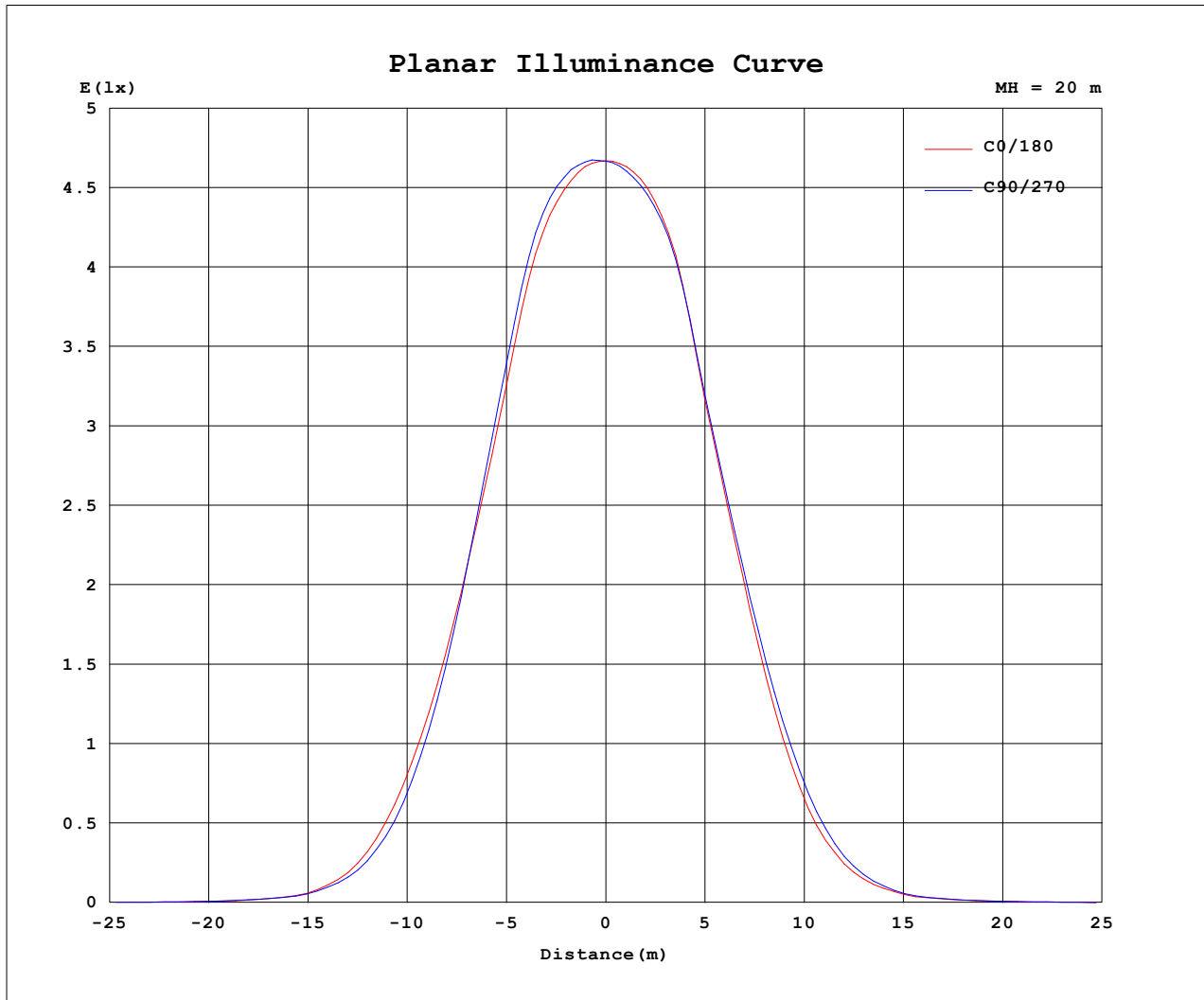
AvgL	cd/m2
L_0~180 (65) av	3005
L_0~180 (75) av	1762
L_0~180 (85) av	1594
L_90~270 (65) av	2706
L_90~270 (75) av	1774
L_90~270 (85) av	1661
L_45 (65) av	3177
L_45 (75) av	1929
L_45 (85) av	1694

Standard: GB/T 29293-2012

C Range: 0 - 360DEG  
 C Interval: For a lens beam angle of 36°  
 Test Speed: HIGH  
 Temperature: 25.3  
 Operators: zoe  
 Test Date: 2024-8-14

γ Range: 0 - 180DEG  
 γ Interval: 1.0DEG  
 Test System: EVERFINE GO-SPEX500\_V1 SYSTEM V2.00.461  
 Humidity: 65.0%  
 Test Distance: 3.160m [K=1.0000]  
 Remarks: LAMP: BXRH-30G10T0-G-83 Ra: 90  
 LENS: PM-1084B 36R  
 NO DRIVER: 500mA  
 30minutes warm-up

### Planar Illuminance Curve



C Range: 0 - 360DEG  
C Interval: For a lens beam angle of 36°  
Test Speed: HIGH  
Temperature: 25.3  
Operators: zoe  
Test Date: 2024-8-14

γ Range: 0 - 180DEG  
γ Interval: 1.0DEG  
Test System: EVERFINE GO-SPEX500\_V1 SYSTEM V2.00.461  
Humidity: 65.0%  
Test Distance: 3.160m [K=1.0000]  
Remarks: LAMP: BXRH-30G10T0-G-83 Ra: 90  
LENS: PM-1084B 36R  
NO DRIVER: 500mA  
30minutes warm-up

## LUMINOUS DISTRIBUTION INTENSITY DATA

Test:U:17.652V I:0.5000A P:8.8260W PF:1.0000 Freq:49.99Hz Lamp Flux:1124.6x1 lm		
NAME: CTL-M-1.5-30K-36-RD-AD	TYPE:	WEIGHT:
SPEC.: 3000K	DIM.:	SERIAL No.: 2408141120
MFR.: MERCURY LIGHTING	SUR.: 0.001256m2	Shielding Angle:

Table--1

UNIT: cd

C (DEG) γ (DEG)	0	30	60	90	120	150	180	210	240	270	300	330						
0	1867	1867	1867	1867	1867	1867	1867	1867	1867	1867	1867	1867						
5	1838	1853	1861	1867	1860	1854	1843	1832	1836	1828	1834	1831						
10	1710	1745	1762	1765	1735	1724	1704	1689	1711	1695	1700	1695						
15	1349	1388	1411	1404	1363	1351	1310	1289	1333	1324	1332	1344						
20	942	954	948	929	899	898	886	879	914	924	928	935						
25	556	545	518	495	468	471	472	472	512	530	544	556						
30	249	237	216	207	189	188	194	192	219	228	246	252						
35	81.6	77.5	72.8	70.8	65.7	64.3	65.7	66.3	73.4	77.3	82.2	84.7						
40	24.2	24.7	22.8	23.9	22.9	22.2	22.2	22.3	22.9	23.8	25.1	24.5						
45	9.38	11.3	10.1	9.92	9.82	9.43	9.03	9.20	9.19	9.53	9.41	9.20						
50	3.81	5.70	4.80	3.91	4.03	3.83	3.58	3.47	3.49	3.59	3.74	3.49						
55	2.30	3.38	3.03	2.06	2.04	1.99	1.88	1.87	1.85	1.91	1.94	1.79						
60	2.06	3.46	2.90	1.72	1.61	1.62	1.60	1.63	1.62	1.60	1.59	1.44						
65	1.68	2.78	2.37	1.42	1.28	1.40	1.51	1.56	1.55	1.46	1.25	1.16						
70	0.98	1.73	1.39	0.94	0.84	0.81	0.83	0.92	0.80	0.73	0.76	0.80						
75	0.61	0.85	0.86	0.66	0.61	0.55	0.53	0.51	0.50	0.50	0.52	0.58						
80	0.37	0.49	0.46	0.40	0.36	0.33	0.33	0.31	0.30	0.31	0.32	0.39						
85	0.20	0.27	0.25	0.22	0.16	0.15	0.15	0.14	0.13	0.14	0.15	0.23						
90	0.00	0.00	0.00	0.00	0.00	0.00	0.00	0.00	0.00	0.00	0.00	0.00						
95	0.00	0.00	0.00	0.00	0.00	0.00	0.00	0.00	0.00	0.00	0.00	0.00						
100	0.00	0.00	0.00	0.00	0.00	0.00	0.00	0.00	0.00	0.00	0.00	0.00						
105	0.00	0.00	0.00	0.00	0.00	0.00	0.00	0.00	0.00	0.00	0.00	0.00						
110	0.00	0.00	0.00	0.00	0.00	0.00	0.00	0.00	0.00	0.00	0.00	0.00						
115	0.00	0.00	0.00	0.00	0.00	0.00	0.00	0.00	0.00	0.00	0.00	0.00						
120	0.00	0.00	0.00	0.00	0.00	0.00	0.00	0.00	0.00	0.00	0.00	0.00						
125	0.00	0.00	0.00	0.00	0.00	0.00	0.00	0.00	0.00	0.00	0.00	0.00						
130	0.00	0.00	0.00	0.00	0.00	0.00	0.00	0.00	0.00	0.00	0.00	0.00						
135	0.00	0.00	0.00	0.00	0.00	0.00	0.00	0.00	0.00	0.00	0.00	0.00						
140	0.00	0.00	0.00	0.00	0.00	0.00	0.00	0.00	0.00	0.00	0.00	0.00						
145	0.00	0.00	0.00	0.00	0.00	0.00	0.00	0.00	0.00	0.00	0.00	0.00						
150	0.00	0.00	0.00	0.00	0.00	0.00	0.00	0.00	0.00	0.00	0.00	0.00						
155	0.00	0.00	0.00	0.00	0.00	0.00	0.00	0.00	0.00	0.00	0.00	0.00						
160	0.00	0.00	0.00	0.00	0.00	0.00	0.00	0.00	0.00	0.00	0.00	0.00						
165	0.00	0.00	0.00	0.00	0.00	0.00	0.00	0.00	0.00	0.00	0.00	0.00						
170	0.00	0.00	0.00	0.00	0.00	0.00	0.00	0.00	0.00	0.00	0.00	0.00						
175	0.00	0.00	0.00	0.00	0.00	0.00	0.00	0.00	0.00	0.00	0.00	0.00						
180	0.00	0.00	0.00	0.00	0.00	0.00	0.00	0.00	0.00	0.00	0.00	0.00						

C Range: 0 - 360DEG

C Interval: For a lens beam angle of 36°

Test Speed: HIGH

Temperature: 25.3

Operators: zoe

Test Date: 2024-8-14

γ Range: 0 - 180DEG

γ Interval: 1.0DEG

Test System: EVERFINE GO-SPEX500\_V1 SYSTEM V2.00.461

Humidity: 65.0%

Test Distance: 3.160m [K=1.0000]

Remarks: LAMP: BXRH-30G10T0-G-83 Ra: 90

LENS: PM-1084B 36R

NO DRIVER: 500mA

30minutes warm-up