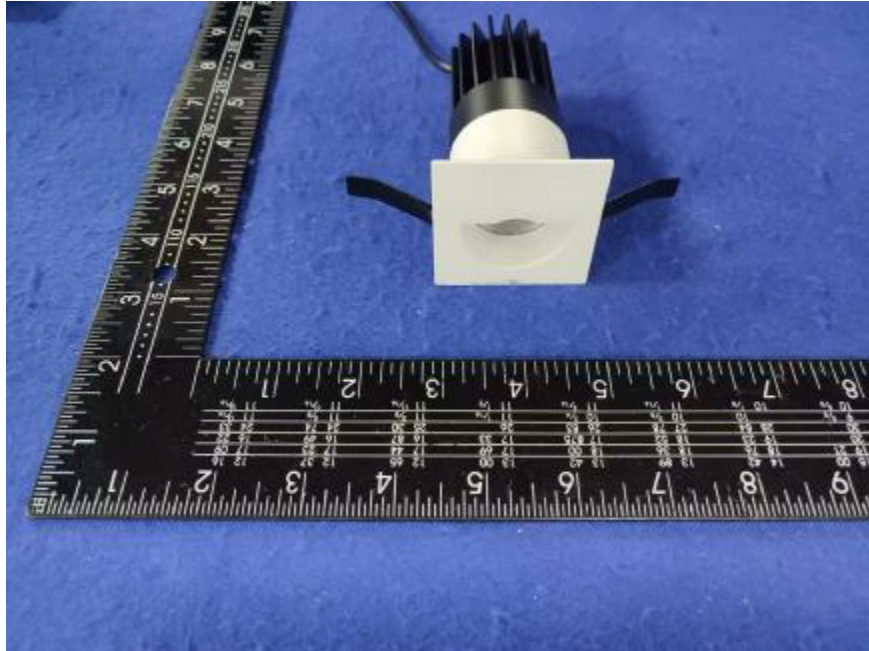


Photometric report for Flanged and Flangeless Trim



Light Output Ratio:	47.6%	
Luminaire Power:	8.821 W	
SHR Nominal:	0.50	Calculated using the TM5
SHR Maximum:	0.55	fine grid method.

C Range: 0 - 360DEG

C Interval: For a lens beam angle of 15°

Test Speed: HIGH

Temperature: 77.54°F

Operators: zoe

Test Date: 2024-8-15

γ Range: 0 - 180DEG

γ Interval: 1.0DEG

Test System: EVERFINE GO-SPEX500_V1 SYSTEM V2.00.461

Humidity: 65.0%

Test Distance: 124.409" [K=1.0000]

Remarks: LAMP: BXRH-30G10T0-G-83 Ra: 90

LENS: PM-1084 15R

NO DRIVER: 500mA

30minutes warm-up

LUMINOUS INTENSITY DISTRIBUTION DIAGRAM

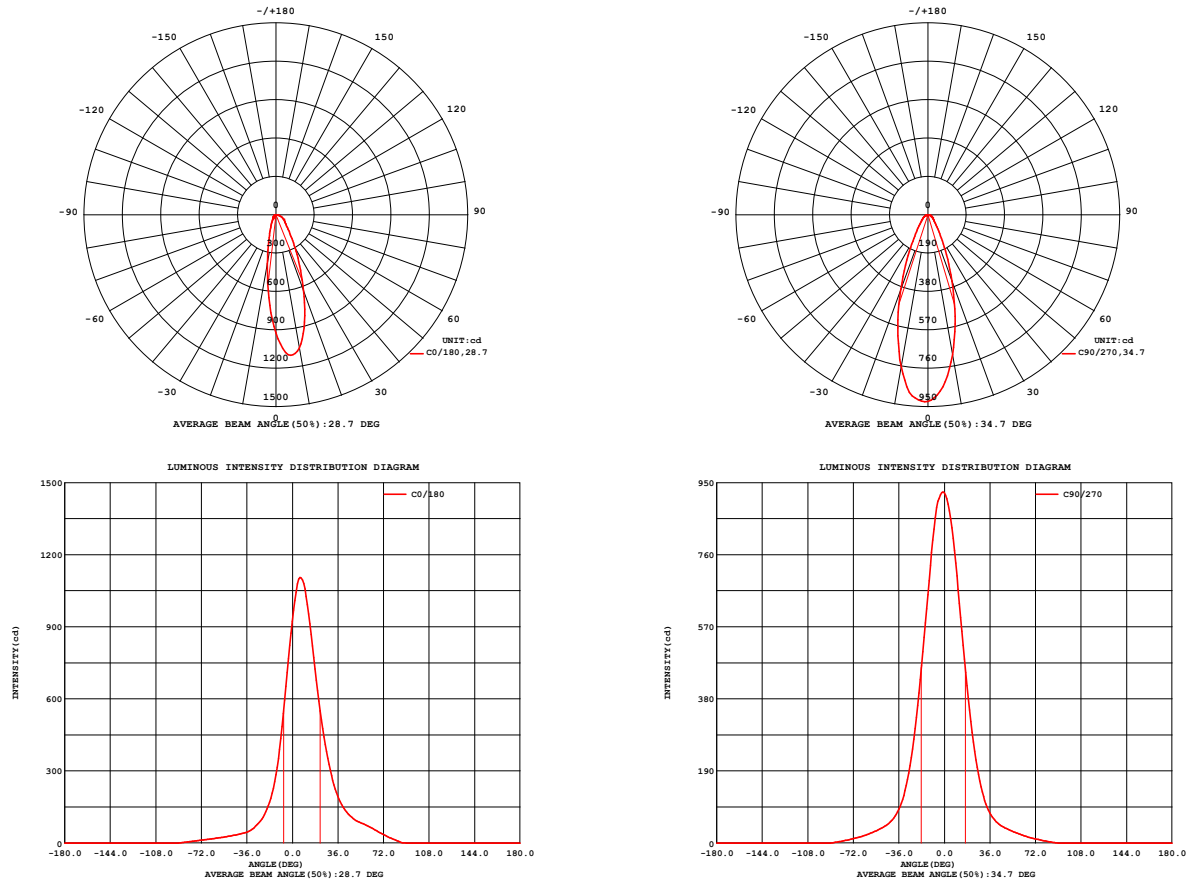


Fig. C0/C180

Fig. C90/C270

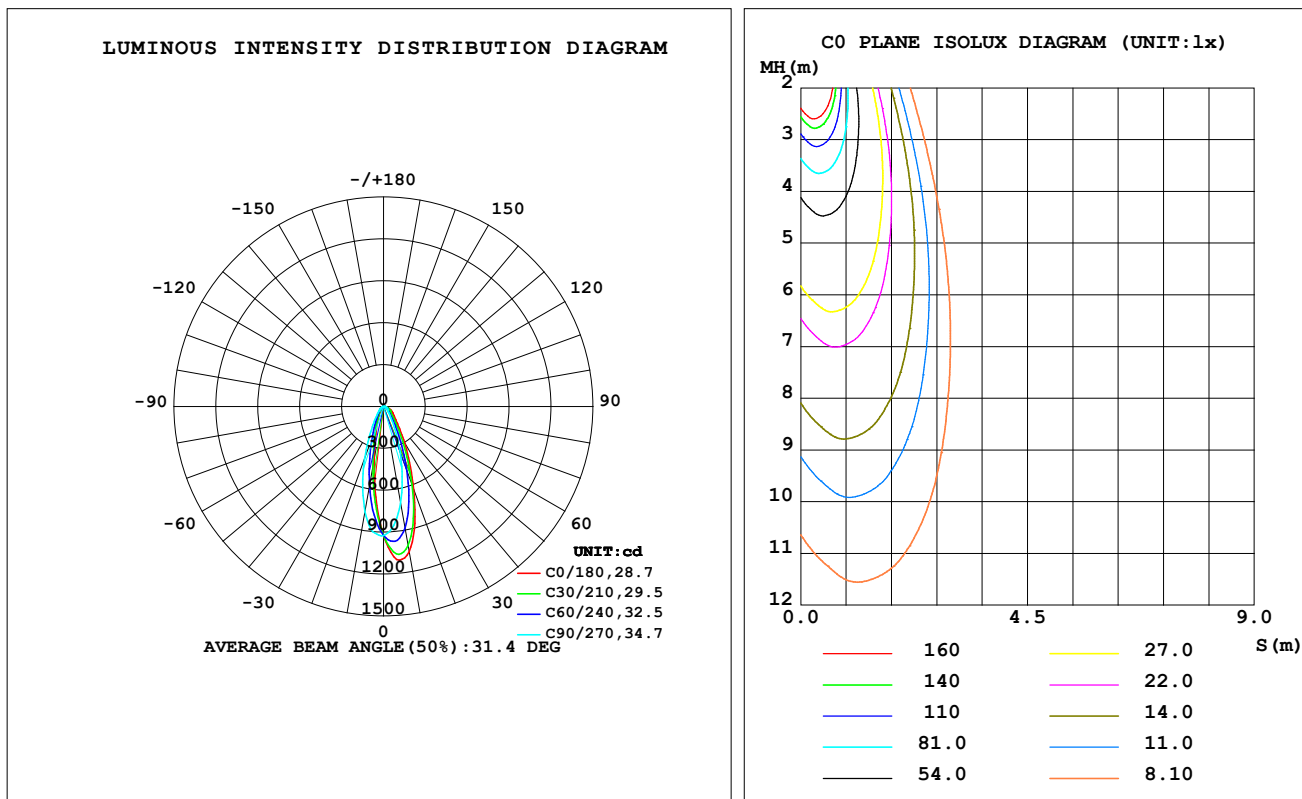
C Range: 0 - 360DEG
C Interval: For a lens beam angle of 15°
Test Speed: HIGH
Temperature: 77.54°F
Operators: zoe
Test Date: 2024-8-15

γ Range: 0 - 180DEG
γ Interval: 1.0DEG
Test System: EVERFINE GO-SPEX500_V1 SYSTEM V2.00.461
Humidity: 65.0%
Test Distance: 124.409" [K=1.0000]
Remarks: LAMP: BXRH-30G10T0-G-83 Ra: 90
LENS: PM-1084 15R
NO DRIVER: 500mA
30minutes warm-up

LUMINAIRE PHOTOMETRIC TEST REPORT

Test:U:17.641V I:0.5000A P:8.8205W PF:1.0000 Freq:49.99Hz Lamp Flux:1124.6x1 lm		
NAME: CTL-M-1.5-30K-15-SQ-WW	TYPE:	WEIGHT:
SPEC.: 3000K	DIM.:	SERIAL No.: 2408151124
MFR.: MERCURY LIGHTING	SUR.: 0.0016m2	Shielding Angle:

DATA OF LAMP		PHOTOMETRIC DATA Eff: 60.70 lm/W			
MODEL	Brideglux	I _{max} (cd)	1106	S/MH (C0/180)	0.29
NOMINAL POWER (W)	9	LOR (%)	47.6	S/MH (C90/270)	0.59
RATED VOLTAGE (V)	18	TOTAL FLUX (lm)	535.40	☒ UP, DN (C0-180)	0.0, 25.5
NOMINAL FLUX (lm)	1124.6	CIE CLASS	DIRECT	☒ UP, DN (C180-360)	0.0, 22.1
LAMPS INSIDE	1	☒ up (%)	0.0	CIBSE SHR NOM	0.50
TEST VOLTAGE (V)	18	☒ down (%)	47.6	CIBSE SHR MAX	0.55



C Range: 0 - 360DEG

C Interval: For a lens beam angle of 15°

Test Speed: HIGH

Temperature: 77.54°F

Operators: zoe

Test Date: 2024-8-15

γ Range: 0 - 180DEG

γ Interval: 1.0DEG

Test System: EVERFINE GO-SPEX500_V1 SYSTEM V2.00.461

Humidity: 65.0%

Test Distance: 124.409" [K=1.0000]

Remarks: LAMP: BXRH-30G10T0-G-83 Ra: 90

LENS: PM-1084 15R

NO DRIVER: 500mA

30minutes warm-up

ZONAL FLUX DIAGRAM

ZONAL FLUX DIAGRAM:

°	C0	C45	C90	C135	C180	C225	C270	C315	°	zone	total	%lum,lamp
10	1058	948.2	704.1	475.5	390.3	509.5	765.8	991.6	0- 10	78.84	78.84	14.7,7.01
20	633.0	544.9	350.2	182.2	142.1	201.2	395.5	570.3	10- 20	150.3	229.2	42.8,20.4
30	302.6	225.2	134.8	79.14	63.65	85.66	151.8	244.2	20- 30	114.5	343.6	64.2,30.6
40	151.4	97.20	60.21	43.98	38.78	46.35	65.69	108.6	30- 40	68.30	411.9	76.9,36.6
50	94.38	56.35	36.39	30.41	28.36	31.30	38.20	63.76	40- 50	45.29	457.2	85.4,40.7
60	70.12	39.93	22.89	20.49	20.03	20.85	23.62	45.33	50- 60	35.13	492.4	92,43.8
70	40.70	23.19	12.27	12.76	12.92	12.95	12.78	26.66	60- 70	25.42	517.8	96.7,46
80	15.56	8.945	5.168	5.888	6.152	6.060	5.428	10.55	70- 80	14.06	531.8	99.3,47.3
90	0	0	0	0	0	0	0	0	80- 90	3.558	535.4	100,47.6
100	0	0	0	0	0	0	0	0	90-100	0	535.4	100,47.6
110	0	0	0	0	0	0	0	0	100-110	0	535.4	100,47.6
120	0	0	0	0	0	0	0	0	110-120	0	535.4	100,47.6
130	0	0	0	0	0	0	0	0	120-130	0	535.4	100,47.6
140	0	0	0	0	0	0	0	0	130-140	0	535.4	100,47.6
150	0	0	0	0	0	0	0	0	140-150	0	535.4	100,47.6
160	0	0	0	0	0	0	0	0	150-160	0	535.4	100,47.6
170	0	0	0	0	0	0	0	0	160-170	0	535.4	100,47.6
180	0	0	0	0	0	0	0	0	170-180	0	535.4	100,47.6
DEG	LUMINOUS INTENSITY:cd									UNIT:lm		

C Range: 0 - 360DEG

C Interval: For a lens beam angle of 15°

Test Speed: HIGH

Temperature:77.54°F

Operators:zoe

Test Date:2024-8-15

γ Range: 0 - 180DEG

γ Interval: 1.0DEG

Test System:EVERFINE GO-SPEX500_V1 SYSTEM V2.00.461

Humidity:65.0%

Test Distance:124.409" [K=1.0000]

Remarks: LAMP:BXRH-30G10T0-G-83 Ra:90

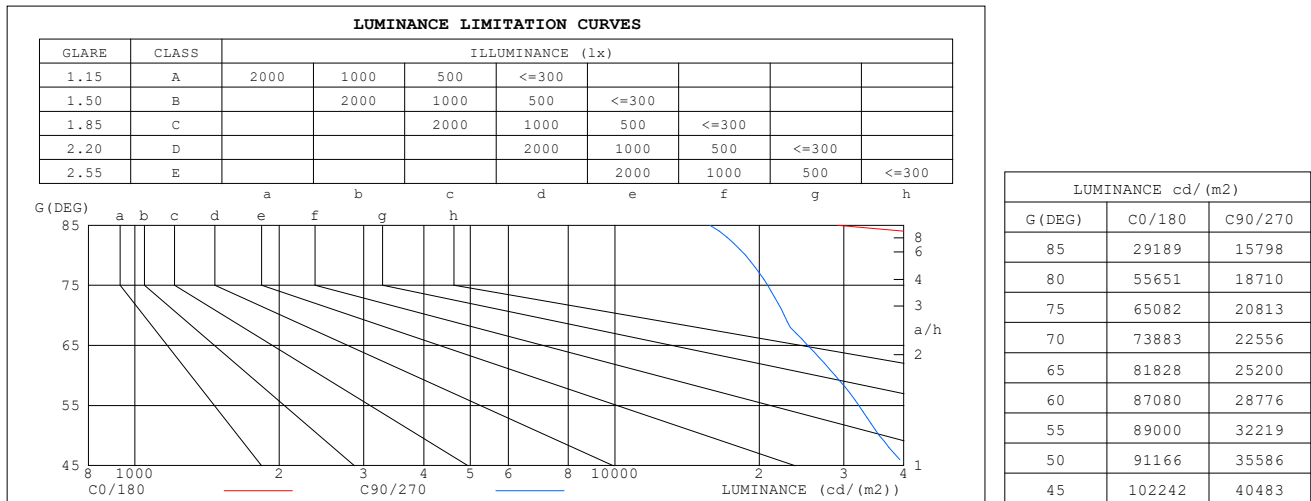
LENS:PM-1084 15R

NO DRIVER:500mA

30minutes warm-up

LUMINANCE LIMITATION CURVES

Test: U:17.641V I:0.5000A P:8.8205W PF:1.0000 Freq:49.99Hz Lamp Flux: 1124.6x1 lm		
NAME: CTL-M-1.5-30K-15-SQ-WW	TYPE:	WEIGHT:
SPEC.: 3000K	DIM.:	SERIAL No.: 2408151124
MFR.: MERCURY LIGHTING	SUR.: 0.0016m2	Shielding Angle:


C Range: 0 - 360DEG

C Interval: For a lens beam angle of 15°

Test Speed: HIGH

Temperature: 77.54°F

Operators: zoe

Test Date: 2024-8-15

γ Range: 0 - 180DEG

γ Interval: 1.0DEG

Test System: EVERFINE GO-SPEX500_V1 SYSTEM V2.00.461

Humidity: 65.0%

Test Distance: 124.409" [K=1.0000]

Remarks: LAMP: BXRH-30G10T0-G-83 Ra:90

LENS: PM-1084 15R

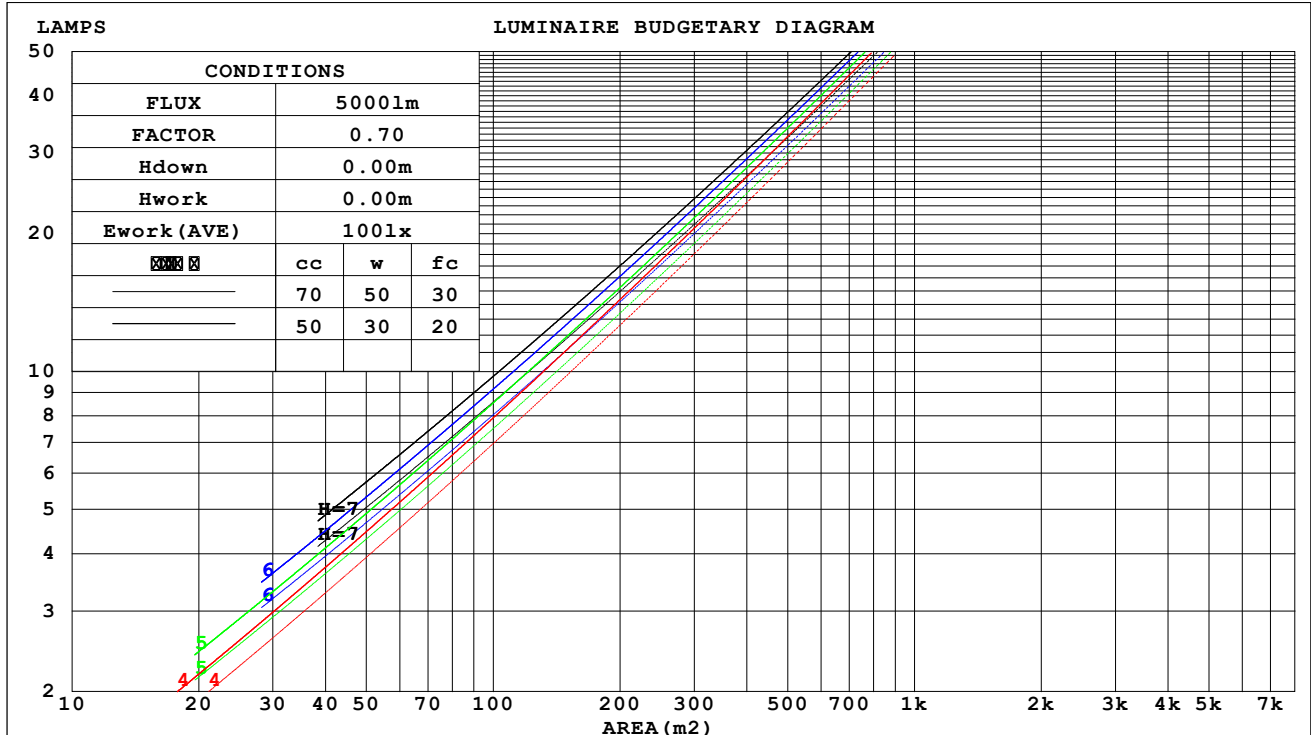
NO DRIVER: 500mA

30minutes warm-up

CU AND LUMINAIRE BUDGETARY ESTIMATE DIAGRAM

Test:U:17.641V I:0.5000A P:8.8205W PF:1.0000 Freq:49.99Hz Lamp Flux:1124.6x1 lm		
NAME: CTL-M-1.5-30K-15-SQ-WW	TYPE:	WEIGHT:
SPEC.: 3000K	DIM.:	SERIAL No.: 2408151124
MFR.: MERCURY LIGHTING	SUR.: 0.0016m2	Shielding Angle:

cc	80%			70%			50%			30%			10%			0														
w	50%	30%	10%	50%	30%	10%	50%	30%	10%	50%	30%	10%	50%	30%	10%	0														
fc	20%			20%			20%			20%			20%			0														
RCR	RCR:Room Cavity Ratio															Coefficients of Utilization(CU)														
0.0	.57	.57	.57	.55	.55	.55	.53	.53	.53	.51	.51	.51	.49	.49	.49	.48														
1.0	.52	.50	.49	.51	.50	.48	.49	.48	.47	.47	.46	.45	.45	.45	.44	.43														
2.0	.48	.45	.43	.47	.45	.43	.45	.43	.42	.44	.42	.41	.42	.41	.40	.39														
3.0	.44	.41	.39	.43	.41	.39	.42	.40	.38	.41	.39	.37	.40	.38	.37	.36														
4.0	.41	.38	.36	.40	.37	.35	.39	.37	.35	.38	.36	.34	.37	.35	.34	.33														
5.0	.38	.35	.33	.38	.35	.33	.37	.34	.32	.36	.34	.32	.35	.33	.32	.31														
6.0	.36	.33	.30	.35	.32	.30	.35	.32	.30	.34	.32	.30	.33	.31	.30	.29														
7.0	.34	.31	.28	.33	.30	.28	.33	.30	.28	.32	.30	.28	.31	.29	.28	.27														
8.0	.32	.29	.27	.31	.29	.27	.31	.28	.26	.30	.28	.26	.30	.28	.26	.26														
9.0	.30	.27	.25	.30	.27	.25	.29	.27	.25	.29	.27	.25	.29	.26	.25	.24														
10.0	.29	.26	.24	.28	.26	.24	.28	.26	.24	.28	.25	.24	.27	.25	.24	.23														



C Range: 0 - 360DEG

C Interval: For a lens beam angle of 15°

Test Speed: HIGH

Temperature: 77.54°F

Operators: zoe

Test Date: 2024-8-15

γ Range: 0 - 180DEG

γ Interval: 1.0DEG

Test System: EVERFINE GO-SPEX500_V1 SYSTEM V2.00.461

Humidity: 65.0%

Test Distance: 124.409" [K=1.0000]

Remarks: LAMP: BXRH-30G10T0-G-83 Ra: 90

LENS: PM-1084 15R

NO DRIVER: 500mA

30minutes warm-up

WEC AND CCEC

Test:U:17.641V I:0.5000A P:8.8205W PF:1.0000 Freq:49.99Hz Lamp Flux:1124.6x1 lm		
NAME: CTL-M-1.5-30K-15-SQ-WW	TYPE:	WEIGHT:
SPEC.: 3000K	DIM.:	SERIAL No.: 2408151124
MFR.: MERCURY LIGHTING	SUR.: 0.0016m2	Shielding Angle:

cc	80%			70%			50%			30%			10%			0
w	50%	30%	10%	50%	30%	10%	50%	30%	10%	50%	30%	10%	50%	30%	10%	0
fc	20%			20%			20%			20%			20%			0
RCR	RCR:Room Cavity Ratio						Wall Exitance Coefficients(WEC)									
0.0																
1.0	.101	.058	.018	.098	.056	.018	.092	.053	.017	.086	.050	.016	.081	.047	.015	
2.0	.096	.052	.016	.093	.051	.016	.088	.049	.015	.083	.047	.015	.078	.044	.014	
3.0	.089	.048	.014	.087	.047	.014	.083	.045	.014	.078	.043	.013	.075	.041	.013	
4.0	.083	.043	.013	.081	.043	.013	.078	.041	.012	.074	.040	.012	.071	.038	.012	
5.0	.078	.040	.012	.076	.039	.011	.073	.038	.011	.070	.037	.011	.067	.036	.011	
6.0	.073	.037	.011	.072	.036	.010	.069	.035	.010	.066	.034	.010	.064	.033	.010	
7.0	.069	.034	.010	.068	.034	.010	.065	.033	.009	.063	.032	.009	.060	.031	.009	
8.0	.065	.032	.009	.064	.032	.009	.062	.031	.009	.060	.030	.009	.058	.030	.009	
9.0	.062	.030	.008	.061	.030	.008	.059	.029	.008	.057	.028	.008	.055	.028	.008	
10.0	.059	.028	.008	.058	.028	.008	.056	.027	.008	.054	.027	.008	.053	.026	.008	

cc	80%			70%			50%			30%			10%			0
w	50%	30%	10%	50%	30%	10%	50%	30%	10%	50%	30%	10%	50%	30%	10%	0
fc	20%			20%			20%			20%			20%			0
RCR	RCR:Room Cavity Ratio						Ceiling Cavity Exitance Coefficients(CCEC)									
0.0	.091	.091	.091	.078	.078	.078	.053	.053	.053	.030	.030	.030	.010	.010	.010	
1.0	.083	.075	.068	.071	.064	.058	.048	.044	.040	.028	.026	.023	.009	.008	.008	
2.0	.076	.063	.052	.065	.054	.045	.045	.038	.031	.026	.022	.018	.008	.007	.006	
3.0	.071	.054	.041	.061	.047	.035	.042	.032	.025	.024	.019	.015	.008	.006	.005	
4.0	.066	.047	.033	.057	.041	.029	.039	.028	.020	.023	.017	.012	.007	.005	.004	
5.0	.062	.042	.027	.053	.036	.024	.037	.025	.017	.021	.015	.010	.007	.005	.003	
6.0	.058	.038	.023	.050	.032	.020	.034	.023	.014	.020	.013	.008	.006	.004	.003	
7.0	.055	.034	.019	.047	.029	.017	.033	.021	.012	.019	.012	.007	.006	.004	.002	
8.0	.052	.031	.017	.045	.027	.014	.031	.019	.010	.018	.011	.006	.006	.004	.002	
9.0	.049	.028	.014	.042	.025	.013	.029	.017	.009	.017	.010	.005	.006	.003	.002	
10.0	.047	.026	.013	.040	.023	.011	.028	.016	.008	.016	.010	.005	.005	.003	.002	

C Range: 0 - 360DEG

C Interval: For a lens beam angle of 15°

Test Speed: HIGH

Temperature:77.54°F

Operators:zoe

Test Date:2024-8-15

γ Range: 0 - 180DEG

γ Interval: 1.0DEG

Test System:EVERFINE GO-SPEX500_V1 SYSTEM V2.00.461

Humidity:65.0%

Test Distance:124.409" [K=1.0000]

Remarks: LAMP:BXRH-30G10T0-G-83 Ra:90

LENS:PM-1084 15R

NO DRIVER:500mA

30minutes warm-up

UGR(Unified Glare Rating) Table

Test:U:17.641V I:0.5000A P:8.8205W PF:1.0000 Freq:49.99Hz Lamp Flux:1124.6x1 lm											
NAME: CTL-M-1.5-30K-15-SQ-WW					TYPE:			WEIGHT:			
SPEC.: 3000K					DIM.:			SERIAL No.: 2408151124			
MFR.: MERCURY LIGHTING					SUR.: 0.0016m2			Shielding Angle:			
ceiling/cavity	0.7	0.7	0.5	0.5	0.3	0.7	0.7	0.5	0.5	0.3	
walls	0.5	0.3	0.5	0.3	0.3	0.5	0.3	0.5	0.3	0.3	
working plane	0.2	0.2	0.2	0.2	0.2	0.2	0.2	0.2	0.2	0.2	
Room dimensions		Viewed crosswise					Viewed endwise				
x = 2H y = 2H	2H	26.8	27.8	27.0	28.0	28.2	22.1	23.2	22.3	23.3	23.5
	3H	28.3	29.2	28.5	29.4	29.6	22.9	23.9	23.2	24.1	24.3
	4H	28.8	29.7	29.1	30.0	30.2	23.2	24.2	23.5	24.4	24.6
	6H	29.2	30.1	29.5	30.3	30.6	23.4	24.3	23.8	24.6	24.8
	8H	29.3	30.2	29.6	30.4	30.7	23.5	24.4	23.8	24.6	24.9
	12H	29.3	30.2	29.7	30.4	30.7	23.5	24.4	23.9	24.6	24.9
4H	2H	26.9	27.9	27.2	28.1	28.3	23.2	24.1	23.5	24.4	24.6
	3H	28.6	29.4	28.9	29.7	30.0	24.1	24.9	24.4	25.2	25.5
	4H	29.3	30.0	29.7	30.3	30.7	24.5	25.2	24.8	25.5	25.8
	6H	29.8	30.5	30.2	30.8	31.2	24.8	25.4	25.1	25.8	26.1
	8H	30.0	30.6	30.4	30.9	31.3	24.8	25.5	25.2	25.8	26.2
	12H	30.0	30.6	30.4	31.0	31.4	24.9	25.4	25.3	25.8	26.2
8H	4H	29.3	29.9	29.7	30.3	30.7	25.0	25.6	25.4	26.0	26.4
	6H	30.0	30.5	30.4	30.9	31.3	25.4	25.9	25.8	26.3	26.7
	8H	30.2	30.6	30.6	31.0	31.5	25.5	25.9	25.9	26.4	26.8
	12H	30.3	30.6	30.7	31.1	31.6	25.6	26.0	26.0	26.4	26.9
12H	4H	29.3	29.8	29.7	30.2	30.6	25.1	25.6	25.5	26.0	26.4
	6H	29.9	30.4	30.4	30.8	31.2	25.5	25.9	25.9	26.4	26.8
	8H	30.2	30.6	30.6	31.0	31.5	25.6	26.0	26.1	26.5	26.9
Variations with the observer position at spacings(CIE Pub.117) :											
S = 1.0H	+ 0.3 / - 0.2					+ 0.4 / - 0.5					
1.5H	+ 0.6 / - 0.4					+ 0.2 / - 0.4					
2.0H	+ 0.6 / - 0.9					+ 0.4 / - 0.7					

CIE Pub.117, 1125 lm Total Lamp Luminous Flux Correct (8log(F/F0) = 0.4)
 Area: 0.0016 m2

C Range: 0 - 360DEG

C Interval: For a lens beam angle of 15°

Test Speed: HIGH

Temperature:77.54°F

Operators:zoe

Test Date:2024-8-15

γ Range: 0 - 180DEG

γ Interval: 1.0DEG

Test System:EVERFINE GO-SPEX500_V1 SYSTEM V2.00.461

Humidity:65.0%

Test Distance:124.409" [K=1.0000]

Remarks: LAMP:BXRH-30G10T0-G-83 Ra:90

LENS:PM-1084 15R

NO DRIVER:500mA

30minutes warm-up

UTILIZATION FACTORS TABLE

Test:U:17.641V I:0.5000A P:8.8205W PF:1.0000 Freq:49.99Hz Lamp Flux:1124.6x1 lm		
NAME: CTL-M-1.5-30K-15-SQ-WW	TYPE:	WEIGHT:
SPEC.: 3000K	DIM.:	SERIAL No.: 2408151124
MFR.: MERCURY LIGHTING	SUR.: 0.0016m2	Shielding Angle:

REFLECTANCE										
Ceiling	0.8	0.8	0.8	0.7	0.7	0.7	0.5	0.5	0.5	0
Walls	0.7	0.5	0.3	0.7	0.5	0.3	0.7	0.5	0.3	0
Working plane	0.2	0.2	0.2	0.2	0.2	0.2	0.2	0.2	0.2	0
ROOM INDEX	UTILIZATION FACTORS (PERCENT) $k(RI) \times RCR = 5$									
$k = 0.60$	37	33	31	37	33	31	36	33	31	28
0.80	41	37	35	40	37	35	40	37	34	32
1.00	43	40	38	43	40	37	42	40	37	35
1.25	46	43	40	45	42	40	44	42	40	37
1.50	48	44	42	47	44	42	46	43	42	39
2.00	49	47	45	49	46	44	47	45	44	41
2.50	51	48	46	50	48	46	48	46	45	42
3.00	52	49	48	51	49	47	49	47	46	43
4.00	53	51	50	52	50	49	50	49	48	44
5.00	54	52	51	53	51	50	51	50	49	45
ROOM INDEX	UF (total)									Direct
According to DIN EN 13032-2 2004			Suspended					SHRNOM = 1.25		

C Range: 0 - 360DEG

C Interval: For a lens beam angle of 15°

Test Speed: HIGH

Temperature: 77.54°F

Operators: zoe

Test Date: 2024-8-15

 γ Range: 0 - 180DEG

 γ Interval: 1.0DEG

Test System: EVERFINE GO-SPEX500_V1 SYSTEM V2.00.461

Humidity: 65.0%

Test Distance: 124.409" [K=1.0000]

Remarks: LAMP: BXRH-30G10T0-G-83 Ra: 90

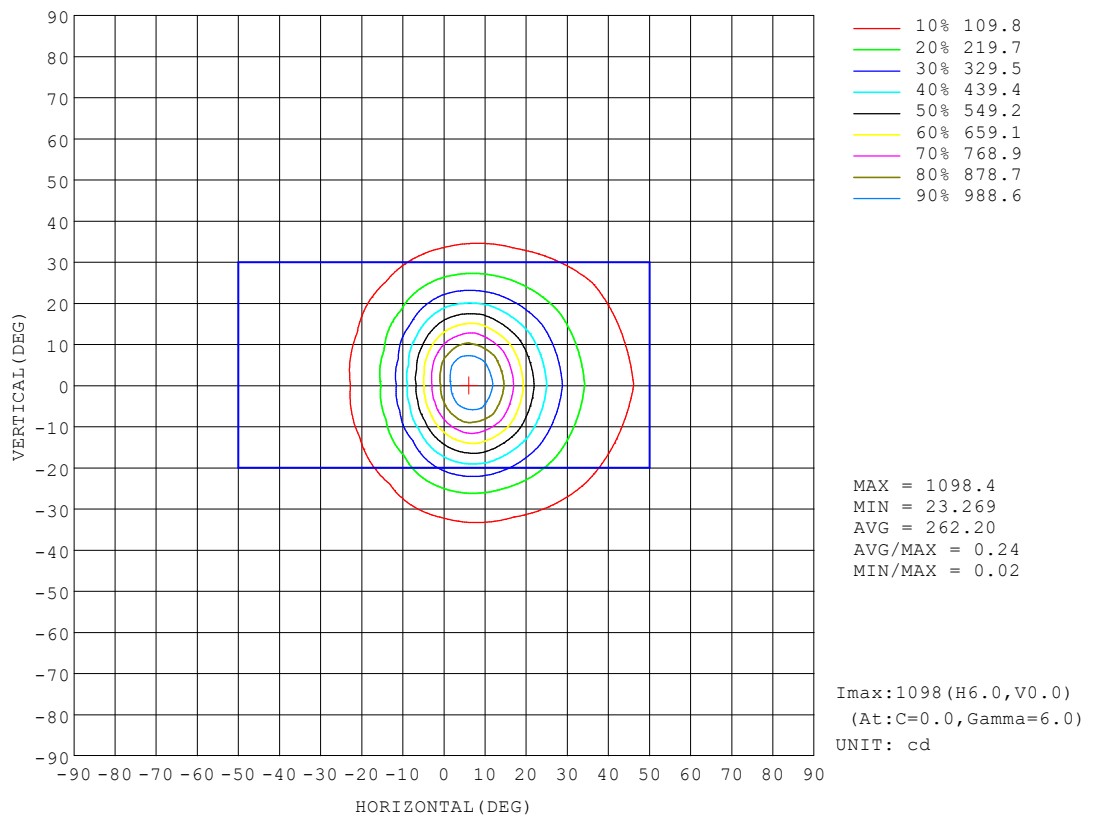
LENS: PM-1084 15R

NO DRIVER: 500mA

30minutes warm-up

ISOCANDELA DIAGRAM

Test:U:17.641V I:0.5000A P:8.8205W PF:1.0000 Freq:49.99Hz Lamp Flux:1124.6x1 lm		
NAME: CTL-M-1.5-30K-15-SQ-WW	TYPE:	WEIGHT:
SPEC.: 3000K	DIM.:	SERIAL No.: 2408151124
MFR.: MERCURY LIGHTING	SUR.: 0.0016m2	Shielding Angle:



C Range: 0 - 360DEG

C Interval: For a lens beam angle of 15°

Test Speed: HIGH

Temperature:77.54°F

Operators:zoe

Test Date:2024-8-15

γ Range: 0 - 180DEG

γ Interval: 1.0DEG

Test System:EVERFINE GO-SPEX500_V1 SYSTEM V2.00.461

Humidity:65.0%

Test Distance:124.409" [K=1.0000]

Remarks: LAMP:BXRH-30G10T0-G-83 Ra:90

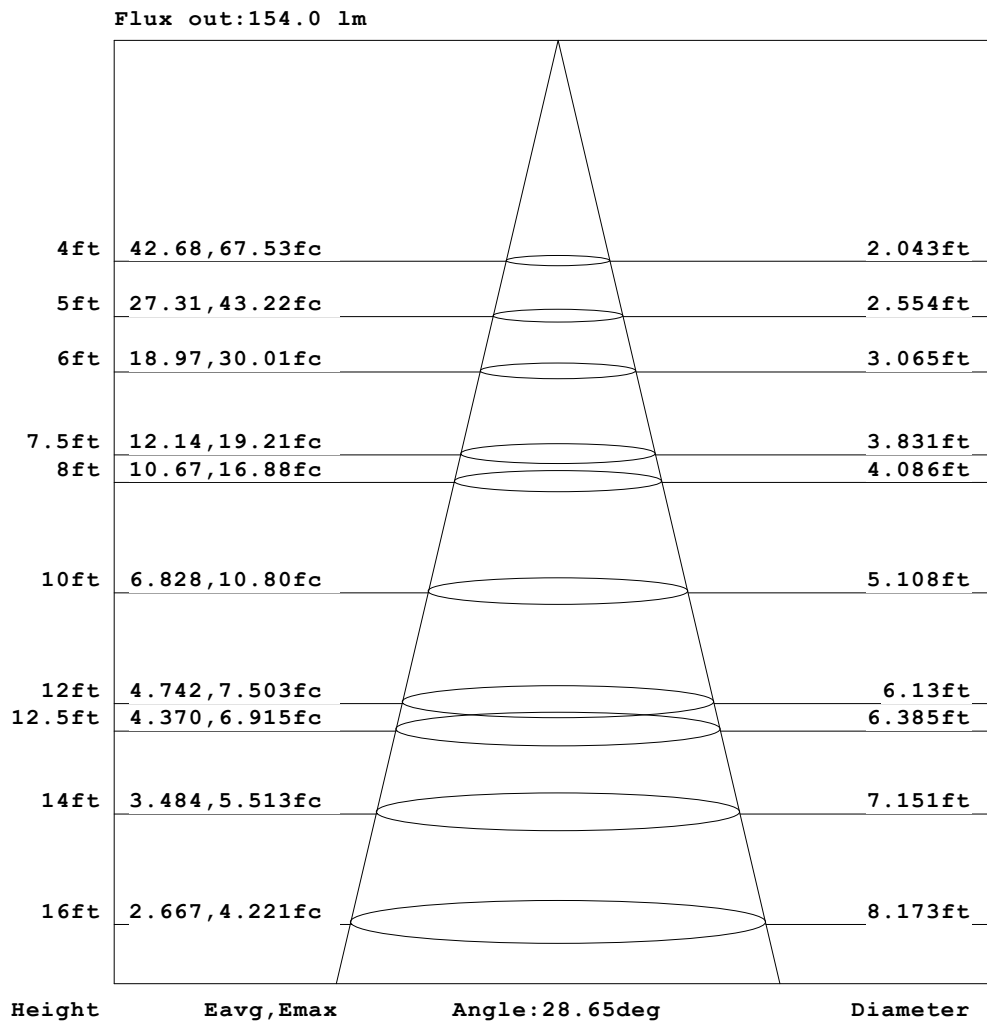
LENS:PM-1084 15R

NO DRIVER:500mA

30minutes warm-up

AAI Figure

Test:U:17.641V I:0.5000A P:8.8205W PF:1.0000 Freq:49.99Hz Lamp Flux:1124.6x1 lm		
NAME: CTL-M-1.5-30K-15-SQ-WW	TYPE:	WEIGHT:
SPEC.: 3000K	DIM.:	SERIAL No.: 2408151124
MFR.: MERCURY LIGHTING	SUR.: 0.0016m2	Shielding Angle:



Note: The Curves indicate the illuminated area and the average illumination when the luminaire is at different distance.

C Range: 0 - 360DEG

C Interval: For a lens beam angle of 15°

Test Speed: HIGH

Temperature: 77.54°F

Operators: zoe

Test Date: 2024-8-15

γ Range: 0 - 180DEG

γ Interval: 1.0DEG

Test System: EVERFINE GO-SPEX500_V1 SYSTEM V2.00.461

Humidity: 65.0%

Test Distance: 124.409" [K=1.0000]

Remarks: LAMP: BXRH-30G10T0-G-83 Ra: 90

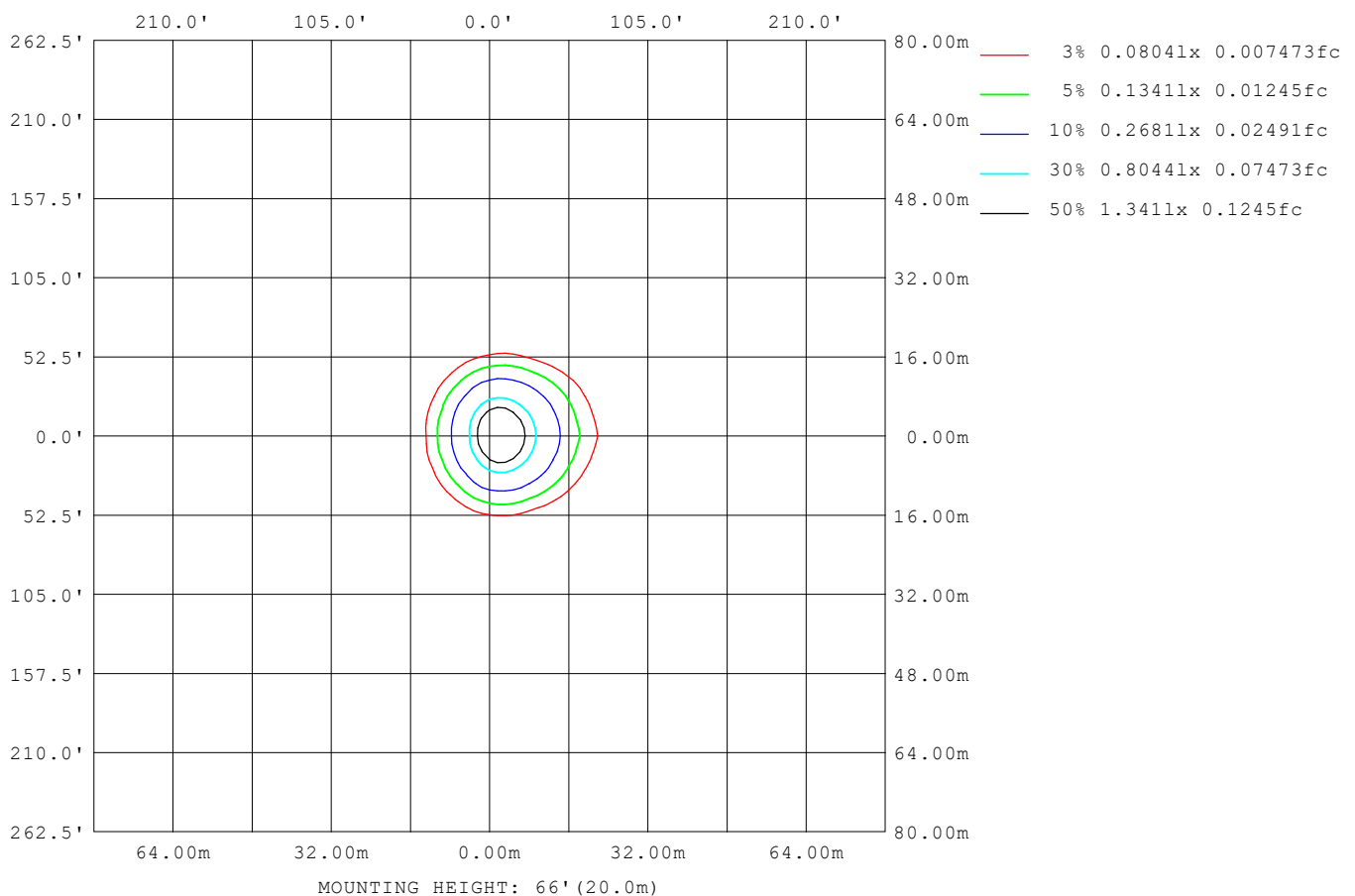
LENS: PM-1084 15R

NO DRIVER: 500mA

30minutes warm-up

ISOLUX DIAGRAM

Test: U:17.641V I:0.5000A P:8.8205W PF:1.0000 Freq:49.99Hz Lamp Flux: 1124.6x1 lm		
NAME: CTL-M-1.5-30K-15-SQ-WW	TYPE:	WEIGHT:
SPEC.: 3000K	DIM.:	SERIAL No.: 2408151124
MFR.: MERCURY LIGHTING	SUR.: 0.0016m ²	Shielding Angle:



C Range: 0 - 360DEG
C Interval: For a lens beam angle of 15°
Test Speed: HIGH
Temperature: 77.54°F
Operators: zoe
Test Date: 2024-8-15

γ Range: 0 - 180DEG
γ Interval: 1.0DEG
Test System: EVERFINE GO-SPEX500_V1 SYSTEM V2.00.461
Humidity: 65.0%
Test Distance: 124.409" [K=1.0000]
Remarks: LAMP: BXRH-30G10T0-G-83 Ra:90
 LENS: PM-1084 15R
 NO DRIVER: 500mA
 30minutes warm-up

LED Avg.L Report

Test:U:17.641V I:0.5000A P:8.8205W PF:1.0000 Freq:49.99Hz Lamp Flux:1124.6x1 lm		
NAME: CTL-M-1.5-30K-15-SQ-WW	TYPE:	WEIGHT:
SPEC.: 3000K	DIM.:	SERIAL No.: 2408151124
MFR.: MERCURY LIGHTING	SUR.: 0.0016m2	Shielding Angle:

AvgL	cd/m2
L_0~180 (65) av	53333
L_0~180 (75) av	44197
L_0~180 (85) av	25331
L_90~270 (65) av	25524
L_90~270 (75) av	21090
L_90~270 (85) av	16420
L_45 (65) av	36955
L_45 (75) av	31521
L_45 (85) av	20898

Standard: GB/T 29293-2012

C Range: 0 - 360DEG

C Interval: For a lens beam angle of 15°

Test Speed: HIGH

Temperature: 77.54°F

Operators: zoe

Test Date: 2024-8-15

γ Range: 0 - 180DEG

γ Interval: 1.0DEG

Test System: EVERFINE GO-SPEX500_V1 SYSTEM V2.00.461

Humidity: 65.0%

Test Distance: 124.409" [K=1.0000]

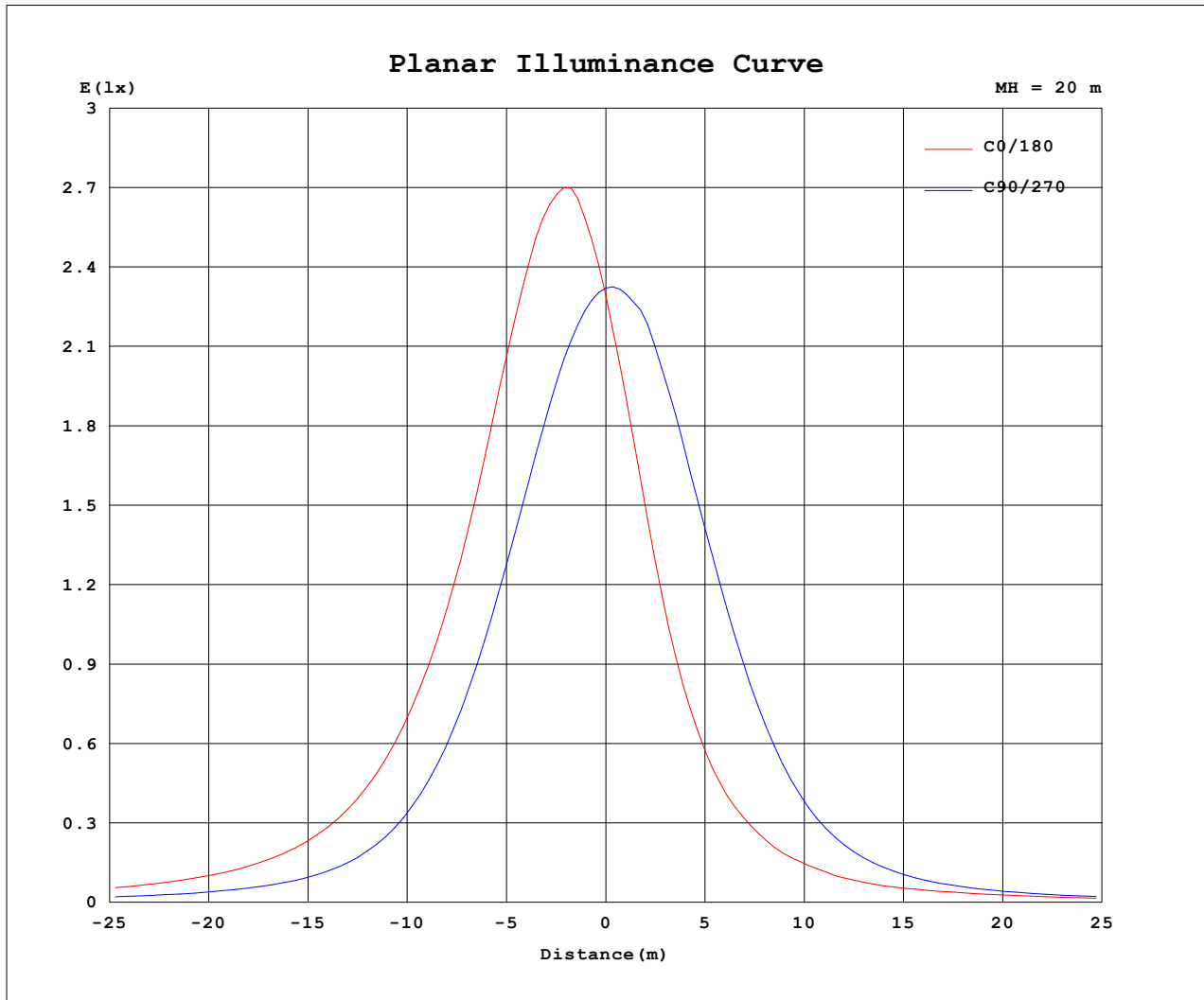
Remarks: LAMP: BXRH-30G10T0-G-83 Ra: 90

LENS: PM-1084 15R

NO DRIVER: 500mA

30minutes warm-up

Planar Illuminance Curve



C Range: 0 - 360DEG

C Interval: For a lens beam angle of 15°

Test Speed: HIGH

Temperature: 77.54°F

Operators: zoe

Test Date: 2024-8-15

γ Range: 0 - 180DEG

γ Interval: 1.0DEG

Test System: EVERFINE GO-SPEX500_V1 SYSTEM V2.00.461

Humidity: 65.0%

Test Distance: 124.409" [K=1.0000]

Remarks: LAMP: BXRH-30G10T0-G-83 Ra: 90

LENS: PM-1084 15R

NO DRIVER: 500mA

30minutes warm-up

LUMINOUS DISTRIBUTION INTENSITY DATA

Test:U:17.641V I:0.5000A P:8.8205W PF:1.0000 Freq:49.99Hz Lamp Flux:1124.6x1 lm		
NAME: CTL-M-1.5-30K-15-SQ-WW	TYPE:	WEIGHT:
SPEC.: 3000K	DIM.:	SERIAL No.: 2408151124
MFR.: MERCURY LIGHTING	SUR.: 0.0016m2	Shielding Angle:

Table--1

UNIT: cd

C (DEG) (DEG)	0	30	60	90	120	150	180	210	240	270	300	330						
0	923	923	923	923	923	923	923	923	923	923	923	923						
5	1099	1060	968	854	748	675	652	690	781	901	1018	1086						
10	1058	1013	884	704	531	420	390	439	579	766	945	1039						
15	867	830	706	521	340	252	228	266	386	580	755	845						
20	633	598	493	350	210	154	142	161	241	396	530	611						
25	442	400	311	219	132	99.2	92.6	106	152	248	340	415						
30	303	260	190	135	88.2	70.0	63.7	73.0	98.2	152	212	276						
35	209	171	118	86.2	63.0	50.5	46.9	52.7	68.0	96.0	133	185						
40	151	118	76.6	60.2	47.7	40.3	38.8	41.4	51.2	65.7	86.6	131						
45	116	87.6	54.0	45.5	38.6	34.1	33.1	34.7	40.6	48.5	61.2	98.9						
50	94.4	70.5	42.4	36.4	31.8	29.0	28.4	29.5	33.1	38.2	47.5	80.1						
55	82.2	59.9	35.2	29.4	26.3	24.2	23.8	24.7	27.1	30.5	39.2	67.9						
60	70.1	51.1	28.8	22.9	21.0	20.0	20.0	20.1	21.6	23.6	32.2	58.5						
65	55.7	40.8	22.2	16.9	16.5	16.3	16.4	16.5	16.8	17.6	25.2	47.2						
70	40.7	30.4	16.0	12.3	12.7	12.8	12.9	13.0	12.9	12.8	18.4	35.0						
75	27.1	20.8	10.6	8.57	9.17	9.33	9.48	9.48	9.38	8.90	12.2	23.9						
80	15.6	11.9	5.99	5.17	5.77	6.01	6.15	6.14	5.98	5.43	7.11	14.0						
85	4.10	3.31	2.05	2.19	2.63	2.85	2.97	2.96	2.83	2.39	2.57	4.11						
90	0.00	0.00	0.00	0.00	0.00	0.00	0.00	0.00	0.00	0.00	0.00	0.00						
95	0.00	0.00	0.00	0.00	0.00	0.00	0.00	0.00	0.00	0.00	0.00	0.00						
100	0.00	0.00	0.00	0.00	0.00	0.00	0.00	0.00	0.00	0.00	0.00	0.00						
105	0.00	0.00	0.00	0.00	0.00	0.00	0.00	0.00	0.00	0.00	0.00	0.00						
110	0.00	0.00	0.00	0.00	0.00	0.00	0.00	0.00	0.00	0.00	0.00	0.00						
115	0.00	0.00	0.00	0.00	0.00	0.00	0.00	0.00	0.00	0.00	0.00	0.00						
120	0.00	0.00	0.00	0.00	0.00	0.00	0.00	0.00	0.00	0.00	0.00	0.00						
125	0.00	0.00	0.00	0.00	0.00	0.00	0.00	0.00	0.00	0.00	0.00	0.00						
130	0.00	0.00	0.00	0.00	0.00	0.00	0.00	0.00	0.00	0.00	0.00	0.00						
135	0.00	0.00	0.00	0.00	0.00	0.00	0.00	0.00	0.00	0.00	0.00	0.00						
140	0.00	0.00	0.00	0.00	0.00	0.00	0.00	0.00	0.00	0.00	0.00	0.00						
145	0.00	0.00	0.00	0.00	0.00	0.00	0.00	0.00	0.00	0.00	0.00	0.00						
150	0.00	0.00	0.00	0.00	0.00	0.00	0.00	0.00	0.00	0.00	0.00	0.00						
155	0.00	0.00	0.00	0.00	0.00	0.00	0.00	0.00	0.00	0.00	0.00	0.00						
160	0.00	0.00	0.00	0.00	0.00	0.00	0.00	0.00	0.00	0.00	0.00	0.00						
165	0.00	0.00	0.00	0.00	0.00	0.00	0.00	0.00	0.00	0.00	0.00	0.00						
170	0.00	0.00	0.00	0.00	0.00	0.00	0.00	0.00	0.00	0.00	0.00	0.00						
175	0.00	0.00	0.00	0.00	0.00	0.00	0.00	0.00	0.00	0.00	0.00	0.00						
180	0.00	0.00	0.00	0.00	0.00	0.00	0.00	0.00	0.00	0.00	0.00	0.00						

C Range: 0 - 360DEG

C Interval: For a lens beam angle of 15°

Test Speed: HIGH

Temperature: 77.54°F

Operators: zoe

Test Date: 2024-8-15

γ Range: 0 - 180DEG

γ Interval: 1.0DEG

Test System: EVERFINE GO-SPEX500_V1 SYSTEM V2.00.461

Humidity: 65.0%

Test Distance: 124.409" [K=1.0000]

Remarks: LAMP: BXRH-30G10T0-G-83 Ra: 90

LENS: PM-1084 15R

NO DRIVER: 500mA

30minutes warm-up