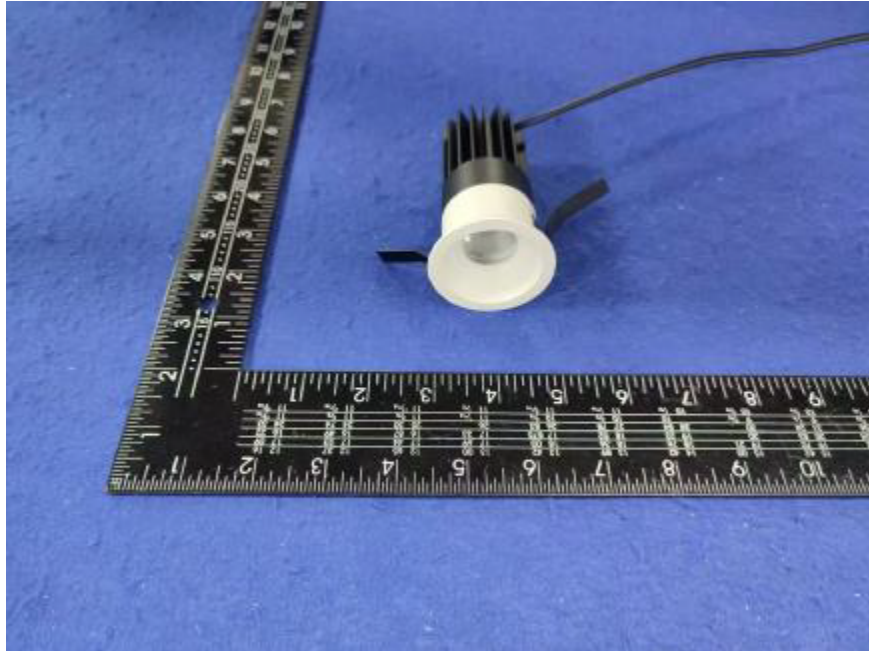


Photometric report for Flanged and Flangeless Trim



|                     |        |                          |
|---------------------|--------|--------------------------|
| Light Output Ratio: | 80.6%  |                          |
| Luminaire Power:    | 8.83 W |                          |
| SHR Nominal:        | 0.00   | Calculated using the TM5 |
| SHR Maximum:        | 0.30   | fine grid method.        |

C Range: 0 - 360DEG  
C Interval: For a lens beam angle of 24°  
Test Speed: HIGH  
Temperature: 77.54 °F  
Operators: zoe  
Test Date: 2024-8-15

γ Range: 0 - 180DEG  
γ Interval: 1.0DEG  
Test System: EVERFINE GO-SPEX500\_V1 SYSTEM V2.00.461  
Humidity: 65.0%  
Test Distance: 124.409" [K=1.0000]  
Remarks: LAMP: BXRH-30G10T0-G-83 Ra: 90  
LENS: PM-1084A 24R  
NO DRIVER: 500mA  
30minutes warm-up

LUMINOUS INTENSITY DISTRIBUTION DIAGRAM

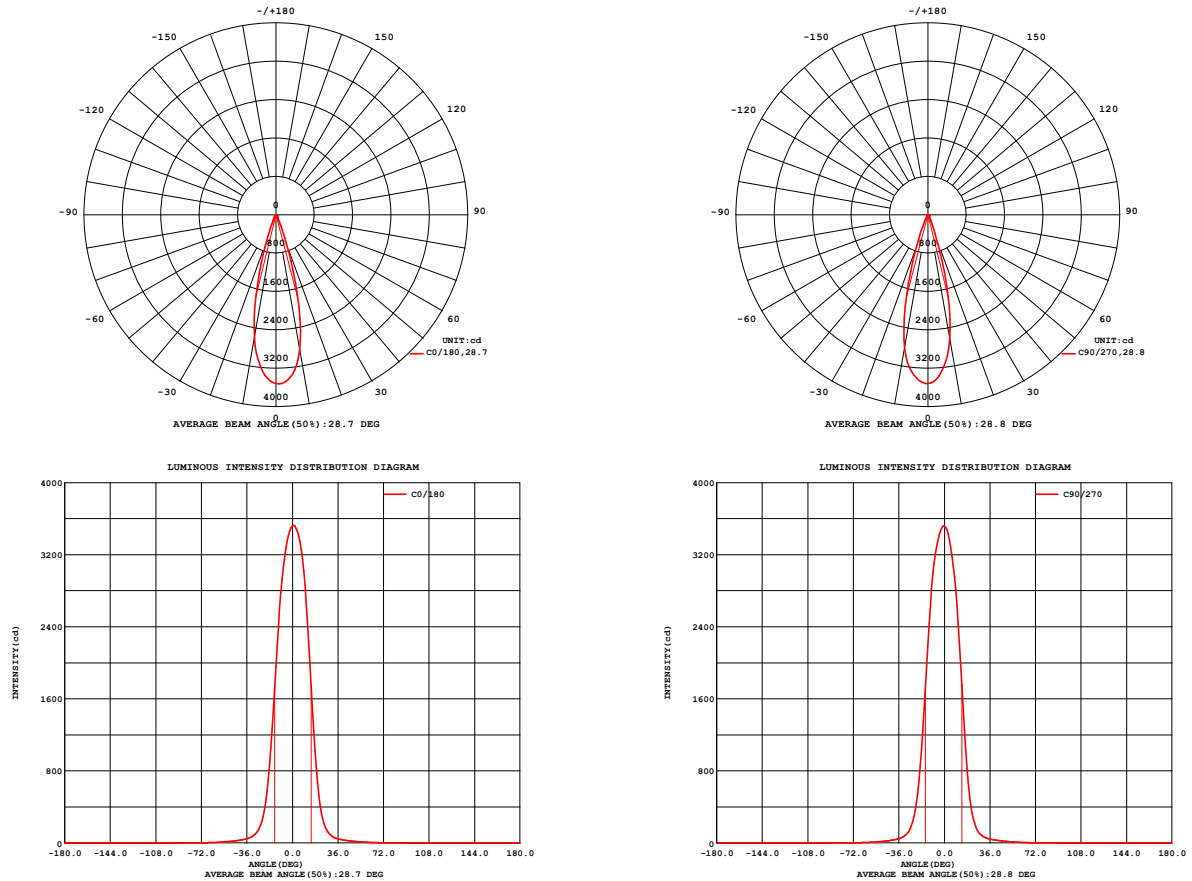


Fig. C0/C180

Fig. C90/C270

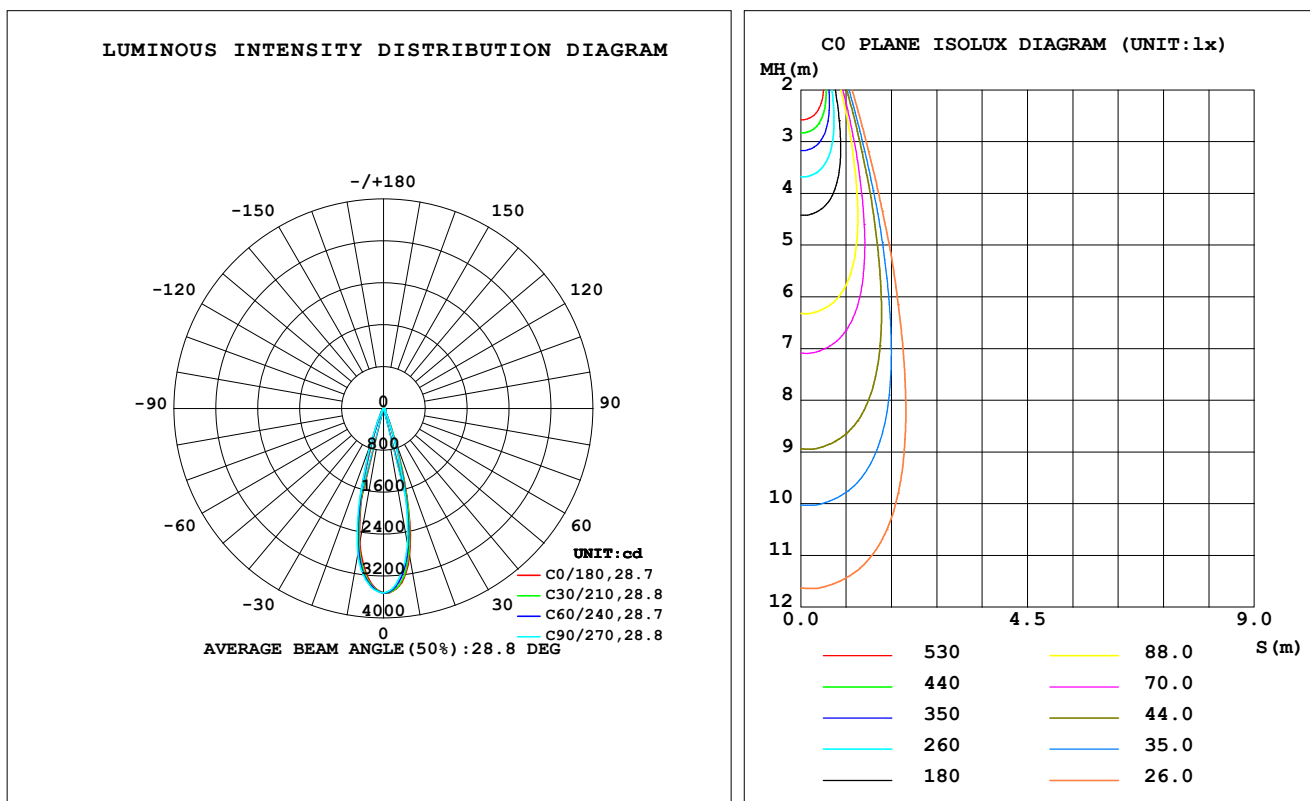
C Range: 0 - 360DEG  
C Interval: For a lens beam angle of 24°  
Test Speed: HIGH  
Temperature: 77.54 °F  
Operators: zoe  
Test Date: 2024-8-15

γ Range: 0 - 180DEG  
γ Interval: 1.0DEG  
Test System: EVERFINE GO-SPEX500\_V1 SYSTEM V2.00.461  
Humidity: 65.0%  
Test Distance: 124.409" [K=1.0000]  
Remarks: LAMP: BXRH-30G10T0-G-83 Ra: 90  
LENS: PM-1084A 24R  
NO DRIVER: 500mA  
30minutes warm-up

## LUMINAIRE PHOTOMETRIC TEST REPORT

|  |                  |                        |
|--|------------------|------------------------|
| Test:U:17.659V I:0.5000A P:8.8295W PF:1.0000 Freq:49.99Hz<br>Lamp Flux:1124.6x1 lm |                  |                        |
| NAME: CTL-M-1.5-30K-24-RD-FX   | TYPE:            | WEIGHT:                |
| SPEC.: 3000K   | DIM.:            | SERIAL No.: 2408151136 |
| MFR.: MERCURY LIGHTING   | SUR.: 0.001256m2 | Shielding Angle:       |

| DATA OF LAMP      |           | PHOTOMETRIC DATA Eff: 102.72 lm/W |        |                     |           |
|-------------------|-----------|-----------------------------------|--------|---------------------|-----------|
| MODEL             | Brideglux | I <sub>max</sub> (cd)             | 3525   | S/MH (C0/180)       | 0.44      |
| NOMINAL POWER (W) | 9         | LOR (%)                           | 80.6   | S/MH (C90/270)      | 0.46      |
| RATED VOLTAGE (V) | 18        | TOTAL FLUX (lm)                   | 906.96 | ☒ UP, DN (C0-180)   | 0.0, 39.1 |
| NOMINAL FLUX (lm) | 1124.6    | CIE CLASS                         | DIRECT | ☒ UP, DN (C180-360) | 0.0, 41.5 |
| LAMPS INSIDE      | 1         | ☒ up (%)                          | 0.0    | CIBSE SHR NOM       | 0.00      |
| TEST VOLTAGE (V)  | 18        | ☒ down (%)                        | 80.6   | CIBSE SHR MAX       | 0.30      |



C Range: 0 - 360DEG

C Interval: For a lens beam angle of 24°

Test Speed: HIGH

Temperature: 77.54 °F

Operators: zoe

Test Date: 2024-8-15

γ Range: 0 - 180DEG

γ Interval: 1.0DEG

Test System: EVERFINE GO-SPEX500\_V1 SYSTEM V2.00.461

Humidity: 65.0%

Test Distance: 124.409" [K=1.0000]

Remarks: LAMP: BXRH-30G10T0-G-83 Ra: 90

LENS: PM-1084A 24R

NO DRIVER: 500mA

30minutes warm-up

## ZONAL FLUX DIAGRAM

### ZONAL FLUX DIAGRAM:

| °   | C0                    | C45    | C90    | C135   | C180   | C225   | C270   | C315   | °       | zone    | total | %lum,lamp |
|-----|-----------------------|--------|--------|--------|--------|--------|--------|--------|---------|---------|-------|-----------|
| 10  | 2863                  | 2750   | 2638   | 2569   | 2605   | 2724   | 2821   | 2880   | 0- 10   | 299.4   | 299.4 | 33,26.6   |
| 20  | 662.3                 | 572.2  | 525.4  | 523.6  | 568.6  | 632.8  | 691.1  | 712.3  | 10- 20  | 429.1   | 728.4 | 80.3,64.8 |
| 30  | 92.01                 | 78.99  | 78.40  | 85.17  | 88.83  | 89.94  | 93.03  | 97.87  | 20- 30  | 110.0   | 838.4 | 92.4,74.6 |
| 40  | 33.90                 | 33.34  | 33.64  | 35.05  | 35.48  | 35.31  | 34.88  | 34.43  | 30- 40  | 33.47   | 871.9 | 96.1,77.5 |
| 50  | 16.62                 | 16.83  | 16.68  | 16.42  | 16.46  | 16.41  | 15.98  | 16.15  | 40- 50  | 18.63   | 890.5 | 98.2,79.2 |
| 60  | 7.209                 | 7.283  | 7.336  | 7.188  | 7.077  | 7.076  | 7.022  | 7.060  | 50- 60  | 9.949   | 900.5 | 99.3,80.1 |
| 70  | 2.389                 | 2.424  | 2.454  | 2.426  | 2.384  | 2.341  | 2.331  | 2.345  | 60- 70  | 4.408   | 904.9 | 99.8,80.5 |
| 80  | 0.8900                | 0.8981 | 0.9193 | 0.8916 | 0.8775 | 0.8537 | 0.8623 | 0.8638 | 70- 80  | 1.655   | 906.5 | 100,80.6  |
| 90  | 0                     | 0      | 0      | 0      | 0      | 0      | 0      | 0      | 80- 90  | 0.4286  | 907.0 | 100,80.6  |
| 100 | 0                     | 0      | 0      | 0      | 0      | 0      | 0      | 0      | 90-100  | 0       | 907.0 | 100,80.6  |
| 110 | 0                     | 0      | 0      | 0      | 0      | 0      | 0      | 0      | 100-110 | 0       | 907.0 | 100,80.6  |
| 120 | 0                     | 0      | 0      | 0      | 0      | 0      | 0      | 0      | 110-120 | 0       | 907.0 | 100,80.6  |
| 130 | 0                     | 0      | 0      | 0      | 0      | 0      | 0      | 0      | 120-130 | 0       | 907.0 | 100,80.6  |
| 140 | 0                     | 0      | 0      | 0      | 0      | 0      | 0      | 0      | 130-140 | 0       | 907.0 | 100,80.6  |
| 150 | 0                     | 0      | 0      | 0      | 0      | 0      | 0      | 0      | 140-150 | 0       | 907.0 | 100,80.6  |
| 160 | 0                     | 0      | 0      | 0      | 0      | 0      | 0      | 0      | 150-160 | 0       | 907.0 | 100,80.6  |
| 170 | 0                     | 0      | 0      | 0      | 0      | 0      | 0      | 0      | 160-170 | 0       | 907.0 | 100,80.6  |
| 180 | 0                     | 0      | 0      | 0      | 0      | 0      | 0      | 0      | 170-180 | 0       | 907.0 | 100,80.6  |
| DEG | LUMINOUS INTENSITY:cd |        |        |        |        |        |        |        |         | UNIT:lm |       |           |

C Range: 0 - 360DEG

C Interval: For a lens beam angle of 24°

Test Speed: HIGH

Temperature:77.54°F

Operators:zoe

Test Date:2024-8-15

γ Range: 0 - 180DEG

γ Interval: 1.0DEG

Test System:EVERFINE GO-SPEX500\_V1 SYSTEM V2.00.461

Humidity:65.0%

Test Distance:124.409" [K=1.0000]

Remarks: LAMP:BXRH-30G10T0-G-83 Ra:90

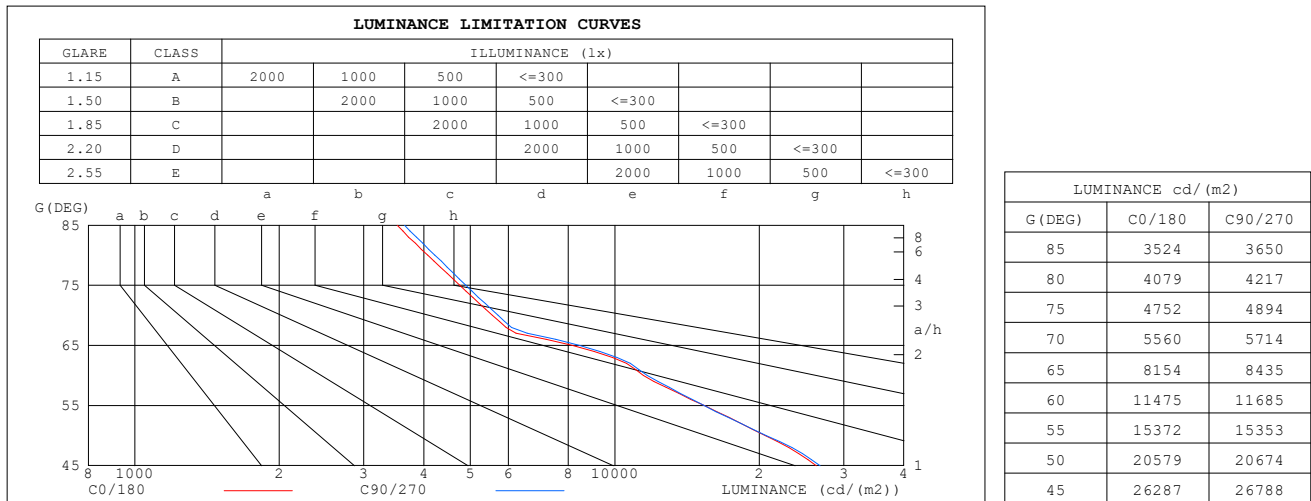
LENS:PM-1084A 24R

NO DRIVER:500mA

30minutes warm-up

## LUMINANCE LIMITATION CURVES

|  |                  |                        |
|--|------------------|------------------------|
| Test:U:17.659V I:0.5000A P:8.8295W PF:1.0000 Freq:49.99Hz<br>Lamp Flux:1124.6x1 lm |                  |                        |
| NAME: CTL-M-1.5-30K-24-RD-FX   | TYPE:            | WEIGHT:                |
| SPEC.: 3000K   | DIM.:            | SERIAL No.: 2408151136 |
| MFR.: MERCURY LIGHTING   | SUR.: 0.001256m2 | Shielding Angle:       |



C Range: 0 - 360DEG

C Interval: For a lens beam angle of 24°

Test Speed: HIGH

Temperature: 77.54°F

Operators: zoe

Test Date: 2024-8-15

γ Range: 0 - 180DEG

γ Interval: 1.0DEG

Test System: EVERFINE GO-SPEX500\_V1 SYSTEM V2.00.461

Humidity: 65.0%

Test Distance: 124.409" [K=1.0000]

Remarks: LAMP: BXRH-30G10T0-G-83 Ra: 90

LENS: PM-1084A 24R

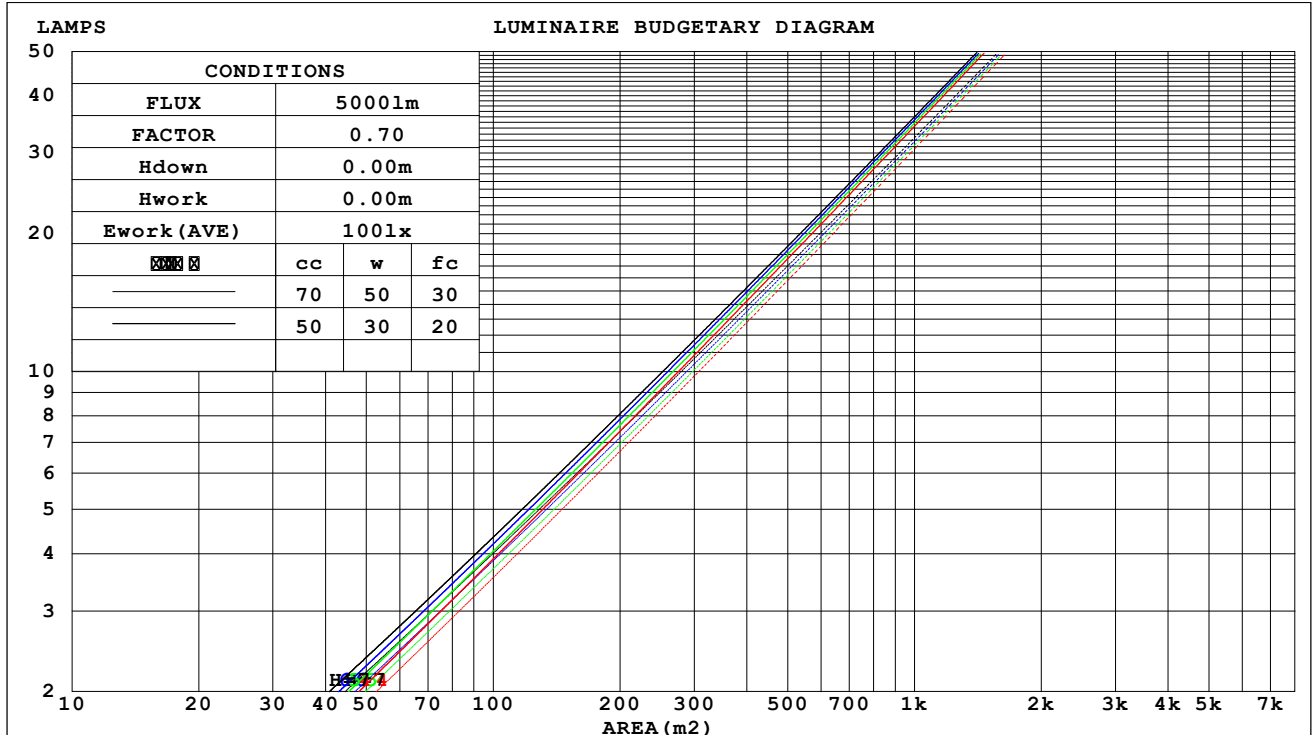
NO DRIVER: 500mA

30minutes warm-up

## CU AND LUMINAIRE BUDGETARY ESTIMATE DIAGRAM

|  |                  |                        |
|--|------------------|------------------------|
| Test:U:17.659V I:0.5000A P:8.8295W PF:1.0000 Freq:49.99Hz<br>Lamp Flux:1124.6x1 lm |                  |                        |
| NAME: CTL-M-1.5-30K-24-RD-FX   | TYPE:            | WEIGHT:                |
| SPEC.: 3000K   | DIM.:            | SERIAL No.: 2408151136 |
| MFR.: MERCURY LIGHTING   | SUR.: 0.001256m2 | Shielding Angle:       |

| cc  | 80%                   |     |     | 70% |     |     | 50% |     |     | 30% |     |     | 10% |     |     | 0 |
|-----|-----------------------|-----|-----|-----|-----|-----|-----|-----|-----|-----|-----|-----|-----|-----|-----|---|
| w   | 50%                   | 30% | 10% | 50% | 30% | 10% | 50% | 30% | 10% | 50% | 30% | 10% | 50% | 30% | 10% | 0 |
| fc  | 20%                   |     |     | 20% |     |     | 20% |     |     | 20% |     |     | 20% |     |     | 0 |
| RCR | RCR:Room Cavity Ratio |     |     |     |     |     |     |     |     |     |     |     |     |     |     |   |



C Range: 0 - 360DEG

C Interval: For a lens beam angle of 24°

Test Speed: HIGH

Temperature: 77.54 °F

Operators: zoe

Test Date: 2024-8-15

γ Range: 0 - 180DEG

γ Interval: 1.0DEG

Test System: EVERFINE GO-SPEX500\_V1 SYSTEM V2.00.461

Humidity: 65.0%

Test Distance: 124.409" [K=1.0000]

Remarks: LAMP: BXRH-30G10T0-G-83 Ra: 90

LENS: PM-1084A 24R

NO DRIVER: 500mA

30minutes warm-up

## WEC AND CCEC

|  |                  |                        |
|--|------------------|------------------------|
| Test:U:17.659V I:0.5000A P:8.8295W PF:1.0000 Freq:49.99Hz<br>Lamp Flux:1124.6x1 lm |                  |                        |
| NAME: CTL-M-1.5-30K-24-RD-FX   | TYPE:            | WEIGHT:                |
| SPEC.: 3000K   | DIM.:            | SERIAL No.: 2408151136 |
| MFR.: MERCURY LIGHTING   | SUR.: 0.001256m2 | Shielding Angle:       |

| cc   | 80%                   |      |      | 70%  |      |      | 50%                             |      |      | 30%  |      |      | 10%  |      |      | 0 |  |
|------|-----------------------|------|------|------|------|------|---------------------------------|------|------|------|------|------|------|------|------|---|--|
| w    | 50%                   | 30%  | 10%  | 50%  | 30%  | 10%  | 50%                             | 30%  | 10%  | 50%  | 30%  | 10%  | 50%  | 30%  | 10%  | 0 |  |
| fc   | 20%                   |      |      | 20%  |      |      | 20%                             |      |      | 20%  |      |      | 20%  |      |      | 0 |  |
| RCR  | RCR:Room Cavity Ratio |      |      |      |      |      | Wall Exitance Coefficients(WEC) |      |      |      |      |      |      |      |      |   |  |
| 0.0  |                       |      |      |      |      |      |                                 |      |      |      |      |      |      |      |      |   |  |
| 1.0  | .115                  | .065 | .021 | .109 | .062 | .020 | .099                            | .057 | .018 | .090 | .052 | .017 | .081 | .047 | .015 |   |  |
| 2.0  | .106                  | .058 | .018 | .102 | .056 | .017 | .094                            | .052 | .016 | .086 | .048 | .015 | .079 | .045 | .014 |   |  |
| 3.0  | .099                  | .053 | .016 | .096 | .051 | .015 | .089                            | .048 | .015 | .082 | .045 | .014 | .076 | .042 | .013 |   |  |
| 4.0  | .093                  | .048 | .014 | .090 | .047 | .014 | .084                            | .045 | .013 | .079 | .042 | .013 | .074 | .040 | .012 |   |  |
| 5.0  | .088                  | .045 | .013 | .085 | .044 | .013 | .080                            | .042 | .012 | .075 | .040 | .012 | .071 | .038 | .011 |   |  |
| 6.0  | .083                  | .041 | .012 | .080 | .041 | .012 | .076                            | .039 | .011 | .072 | .037 | .011 | .068 | .036 | .011 |   |  |
| 7.0  | .078                  | .039 | .011 | .076 | .038 | .011 | .073                            | .037 | .011 | .069 | .035 | .010 | .066 | .034 | .010 |   |  |
| 8.0  | .075                  | .036 | .010 | .073 | .036 | .010 | .070                            | .035 | .010 | .067 | .034 | .010 | .064 | .033 | .010 |   |  |
| 9.0  | .071                  | .034 | .010 | .070 | .034 | .010 | .067                            | .033 | .009 | .064 | .032 | .009 | .062 | .031 | .009 |   |  |
| 10.0 | .068                  | .033 | .009 | .067 | .032 | .009 | .064                            | .031 | .009 | .062 | .031 | .009 | .060 | .030 | .009 |   |  |

| cc   | 80%                   |      |      | 70%  |      |      | 50%  |      |      | 30%  |      |      | 10%  |      |      | 0 |
|------|-----------------------|------|------|------|------|------|--|------|------|------|------|------|------|------|------|---|
| w    | 50%                   | 30%  | 10%  | 50%  | 30%  | 10%  | 50%  | 30%  | 10%  | 50%  | 30%  | 10%  | 50%  | 30%  | 10%  | 0 |
| fc   | 20%                   |      |      | 20%  |      |      | 20%  |      |      | 20%  |      |      | 20%  |      |      | 0 |
| RCR  | RCR:Room Cavity Ratio |      |      |      |      |      | Ceiling Cavity Exitance Coefficients(CCEC) |      |      |      |      |      |      |      |      |   |
| 0.0  | .154                  | .154 | .154 | .131 | .131 | .131 | .090                                       | .090 | .090 | .051 | .051 | .051 | .016 | .016 | .016 |   |
| 1.0  | .136                  | .127 | .119 | .116 | .109 | .102 | .080                                       | .075 | .071 | .046 | .043 | .041 | .015 | .014 | .013 |   |
| 2.0  | .122                  | .107 | .095 | .104 | .092 | .082 | .071                                       | .064 | .057 | .041 | .037 | .033 | .013 | .012 | .011 |   |
| 3.0  | .110                  | .091 | .077 | .094 | .079 | .066 | .065                                       | .055 | .047 | .037 | .032 | .027 | .012 | .010 | .009 |   |
| 4.0  | .100                  | .079 | .063 | .086 | .068 | .055 | .059                                       | .048 | .039 | .034 | .028 | .023 | .011 | .009 | .008 |   |
| 5.0  | .091                  | .069 | .053 | .079 | .060 | .046 | .054                                       | .042 | .032 | .031 | .025 | .019 | .010 | .008 | .006 |   |
| 6.0  | .084                  | .061 | .044 | .073 | .053 | .039 | .050                                       | .037 | .027 | .029 | .022 | .016 | .009 | .007 | .005 |   |
| 7.0  | .078                  | .055 | .038 | .067 | .047 | .033 | .047                                       | .033 | .023 | .027 | .020 | .014 | .009 | .006 | .005 |   |
| 8.0  | .073                  | .049 | .033 | .063 | .043 | .029 | .044                                       | .030 | .020 | .025 | .018 | .012 | .008 | .006 | .004 |   |
| 9.0  | .068                  | .045 | .028 | .059 | .039 | .025 | .041                                       | .027 | .018 | .024 | .016 | .011 | .008 | .005 | .003 |   |
| 10.0 | .065                  | .041 | .025 | .056 | .035 | .022 | .039                                       | .025 | .015 | .022 | .015 | .009 | .007 | .005 | .003 |   |

C Range: 0 - 360DEG

C Interval: For a lens beam angle of 24°

Test Speed: HIGH

Temperature:77.54°F

Operators:zoe

Test Date:2024-8-15

γ Range: 0 - 180DEG

γ Interval: 1.0DEG

Test System:EVERFINE GO-SPEX500\_V1 SYSTEM V2.00.461

Humidity:65.0%

Test Distance:124.409" [K=1.0000]

Remarks: LAMP:BXRH-30G10T0-G-83 Ra:90

LENS:PM-1084A 24R

NO DRIVER:500mA

30minutes warm-up

UGR(Unified Glare Rating) Table

|  |               |                  |      |      |                  |               |                |                        |      |      |      |
|--|---------------|------------------|------|------|------------------|---------------|----------------|------------------------|------|------|------|
| Test:U:17.659V I:0.5000A P:8.8295W PF:1.0000 Freq:49.99Hz<br>Lamp Flux:1124.6x1 lm |               |                  |      |      |                  |               |                |                        |      |      |      |
| NAME: CTL-M-1.5-30K-24-RD-FX   |               |                  |      |      | TYPE:            |               |                | WEIGHT:                |      |      |      |
| SPEC.: 3000K   |               |                  |      |      | DIM.:            |               |                | SERIAL No.: 2408151136 |      |      |      |
| MFR.: MERCURY LIGHTING   |               |                  |      |      | SUR.: 0.001256m2 |               |                | Shielding Angle:       |      |      |      |
| ceiling/cavity   | 0.7           | 0.7              | 0.5  | 0.5  | 0.3              | 0.7           | 0.7            | 0.5                    | 0.5  | 0.3  |      |
| walls  | 0.5           | 0.3              | 0.5  | 0.3  | 0.3              | 0.5           | 0.3            | 0.5                    | 0.3  | 0.3  |      |
| working plane  | 0.2           | 0.2              | 0.2  | 0.2  | 0.2              | 0.2           | 0.2            | 0.2                    | 0.2  | 0.2  |      |
| Room dimensions  |               | Viewed crosswise |      |      |                  |               | Viewed endwise |                        |      |      |      |
| x = 2H y = 2H  | 2H            | 14.2             | 14.9 | 14.4 | 15.1             | 15.2          | 14.1           | 14.8                   | 14.3 | 15.0 | 15.1 |
|  | 3H            | 14.4             | 15.0 | 14.6 | 15.2             | 15.4          | 14.3           | 14.9                   | 14.5 | 15.1 | 15.3 |
|  | 4H            | 14.4             | 15.0 | 14.7 | 15.2             | 15.4          | 14.3           | 14.9                   | 14.6 | 15.2 | 15.4 |
|  | 6H            | 14.4             | 15.0 | 14.7 | 15.2             | 15.5          | 14.4           | 14.9                   | 14.6 | 15.2 | 15.4 |
|  | 8H            | 14.4             | 15.0 | 14.7 | 15.2             | 15.5          | 14.3           | 14.9                   | 14.6 | 15.1 | 15.4 |
|  | 12H           | 14.4             | 14.9 | 14.7 | 15.2             | 15.4          | 14.3           | 14.9                   | 14.6 | 15.1 | 15.4 |
| 4H   | 2H            | 14.3             | 14.9 | 14.6 | 15.1             | 15.3          | 14.2           | 14.8                   | 14.5 | 15.0 | 15.2 |
|  | 3H            | 14.5             | 15.0 | 14.8 | 15.3             | 15.6          | 14.4           | 15.0                   | 14.7 | 15.2 | 15.5 |
|  | 4H            | 14.6             | 15.1 | 14.9 | 15.4             | 15.7          | 14.5           | 15.0                   | 14.9 | 15.3 | 15.6 |
|  | 6H            | 14.6             | 15.0 | 15.0 | 15.4             | 15.7          | 14.6           | 15.0                   | 14.9 | 15.3 | 15.7 |
|  | 8H            | 14.6             | 15.0 | 15.0 | 15.4             | 15.7          | 14.6           | 15.0                   | 15.0 | 15.3 | 15.7 |
|  | 12H           | 14.6             | 15.0 | 15.0 | 15.3             | 15.7          | 14.6           | 14.9                   | 15.0 | 15.3 | 15.7 |
| 8H   | 4H            | 14.5             | 14.9 | 14.9 | 15.3             | 15.6          | 14.5           | 14.9                   | 14.8 | 15.2 | 15.6 |
|  | 6H            | 14.6             | 14.9 | 15.0 | 15.3             | 15.7          | 14.5           | 14.9                   | 15.0 | 15.3 | 15.7 |
|  | 8H            | 14.6             | 14.9 | 15.1 | 15.3             | 15.8          | 14.6           | 14.9                   | 15.0 | 15.3 | 15.7 |
|  | 12H           | 14.6             | 14.9 | 15.1 | 15.3             | 15.8          | 14.6           | 14.8                   | 15.0 | 15.3 | 15.7 |
| 12H  | 4H            | 14.5             | 14.8 | 14.9 | 15.2             | 15.6          | 14.4           | 14.8                   | 14.8 | 15.2 | 15.5 |
|  | 6H            | 14.6             | 14.9 | 15.0 | 15.3             | 15.7          | 14.5           | 14.8                   | 14.9 | 15.2 | 15.7 |
|  | 8H            | 14.6             | 14.8 | 15.0 | 15.3             | 15.7          | 14.5           | 14.8                   | 15.0 | 15.2 | 15.7 |
| Variations with the observer position at spacings(CIE Pub.117):                    |               |                  |      |      |                  |               |                |                        |      |      |      |
| S = 1.0H   | + 1.1 / - 1.7 |                  |      |      |                  | + 1.1 / - 1.7 |                |                        |      |      |      |
| 1.5H   | + 1.4 / - 1.1 |                  |      |      |                  | + 1.2 / - 1.1 |                |                        |      |      |      |
| 2.0H   | + 2.2 / - 1.9 |                  |      |      |                  | + 2.2 / - 1.9 |                |                        |      |      |      |

CIE Pub.117, 1125 lm Total Lamp Luminous Flux Correct (8log(F/F0) = 0.4)  
 Area: 0.001256 m2

|  |   |
|--|---|
| C Range: 0 - 360DEG                      | γ Range: 0 - 180DEG                                 |
| C Interval: For a lens beam angle of 24° | γ Interval: 1.0DEG                                  |
| Test Speed: HIGH                         | Test System:EVERFINE GO-SPEX500_V1 SYSTEM V2.00.461 |
| Temperature:77.54°F                      | Humidity:65.0%                                      |
| Operators:zoe                            | Test Distance:124.409" [K=1.0000]                   |
| Test Date:2024-8-15                      | Remarks: LAMP:BXRH-30G10T0-G-83 Ra:90               |
|  | LENS:PM-1084A 24R                                   |
|  | NO DRIVER:500mA                                     |
|  | 30minutes warm-up                                   |



## UTILIZATION FACTORS TABLE

|  |                  |                        |
|--|------------------|------------------------|
| Test:U:17.659V I:0.5000A P:8.8295W PF:1.0000 Freq:49.99Hz<br>Lamp Flux:1124.6x1 lm |                  |                        |
| NAME: CTL-M-1.5-30K-24-RD-FX   | TYPE:            | WEIGHT:                |
| SPEC.: 3000K   | DIM.:            | SERIAL No.: 2408151136 |
| MFR.: MERCURY LIGHTING   | SUR.: 0.001256m2 | Shielding Angle:       |

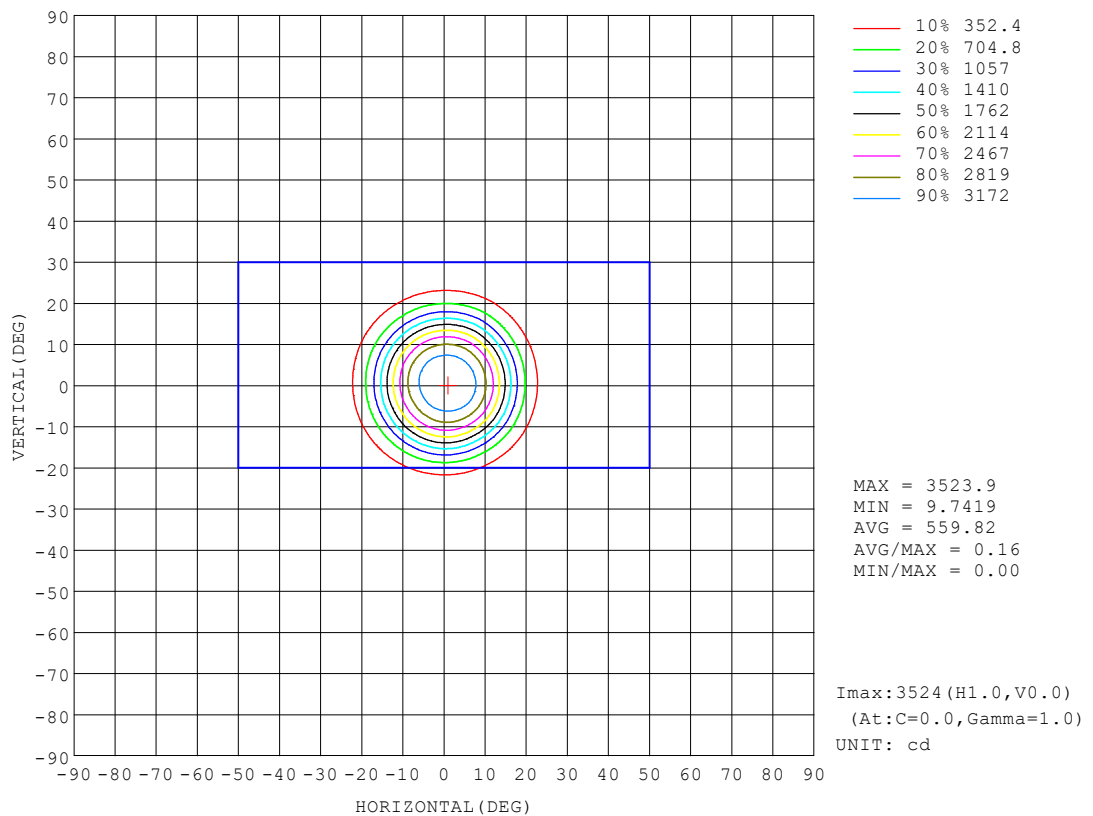
| REFLECTANCE                      |  |     |           |     |     |     |     |               |     |        |
|----------------------------------|--|-----|-----------|-----|-----|-----|-----|---------------|-----|--------|
| Ceiling                          | 0.8  | 0.8 | 0.8       | 0.7 | 0.7 | 0.7 | 0.5 | 0.5           | 0.5 | 0      |
| Walls                            | 0.7  | 0.5 | 0.3       | 0.7 | 0.5 | 0.3 | 0.7 | 0.5           | 0.3 | 0      |
| Working plane                    | 0.2  | 0.2 | 0.2       | 0.2 | 0.2 | 0.2 | 0.2 | 0.2           | 0.2 | 0      |
| ROOM INDEX                       | UTILIZATION FACTORS (PERCENT) $k(RI) \times RCR = 5$ |     |           |     |     |     |     |               |     |        |
| $k = 0.60$                       | 72   | 67  | 64        | 71  | 67  | 64  | 71  | 67            | 64  | 61     |
| 0.80                             | 78   | 73  | 70        | 77  | 73  | 70  | 76  | 72            | 70  | 67     |
| 1.00                             | 81   | 77  | 74        | 80  | 76  | 74  | 79  | 76            | 73  | 70     |
| 1.25                             | 84   | 80  | 77        | 83  | 80  | 77  | 82  | 79            | 76  | 73     |
| 1.50                             | 86   | 82  | 80        | 85  | 82  | 80  | 83  | 81            | 79  | 75     |
| 2.00                             | 88   | 85  | 82        | 87  | 84  | 82  | 85  | 82            | 81  | 76     |
| 2.50                             | 89   | 86  | 84        | 88  | 85  | 83  | 86  | 83            | 82  | 77     |
| 3.00                             | 90   | 88  | 86        | 89  | 87  | 85  | 86  | 85            | 83  | 78     |
| 4.00                             | 92   | 90  | 88        | 90  | 89  | 87  | 88  | 86            | 85  | 79     |
| 5.00                             | 93   | 91  | 90        | 91  | 90  | 89  | 88  | 87            | 86  | 80     |
| ROOM INDEX                       | UF (total)   |     |           |     |     |     |     |               |     | Direct |
| According to DIN EN 13032-2 2004 |  |     | Suspended |     |     |     |     | SHRNOM = 1.25 |     |        |

C Range: 0 - 360DEG  
 C Interval: For a lens beam angle of 24°  
 Test Speed: HIGH  
 Temperature: 77.54 °F  
 Operators: zoe  
 Test Date: 2024-8-15

γ Range: 0 - 180DEG  
 γ Interval: 1.0DEG  
 Test System: EVERFINE GO-SPEX500\_V1 SYSTEM V2.00.461  
 Humidity: 65.0%  
 Test Distance: 124.409" [K=1.0000]  
 Remarks: LAMP: BXRH-30G10T0-G-83 Ra:90  
 LENS: PM-1084A 24R  
 NO DRIVER: 500mA  
 30minutes warm-up

## ISOCANDELA DIAGRAM

|  |                  |                        |
|--|------------------|------------------------|
| Test:U:17.659V I:0.5000A P:8.8295W PF:1.0000 Freq:49.99Hz<br>Lamp Flux:1124.6x1 lm |                  |                        |
| NAME: CTL-M-1.5-30K-24-RD-FX   | TYPE:            | WEIGHT:                |
| SPEC.: 3000K   | DIM.:            | SERIAL No.: 2408151136 |
| MFR.: MERCURY LIGHTING   | SUR.: 0.001256m2 | Shielding Angle:       |



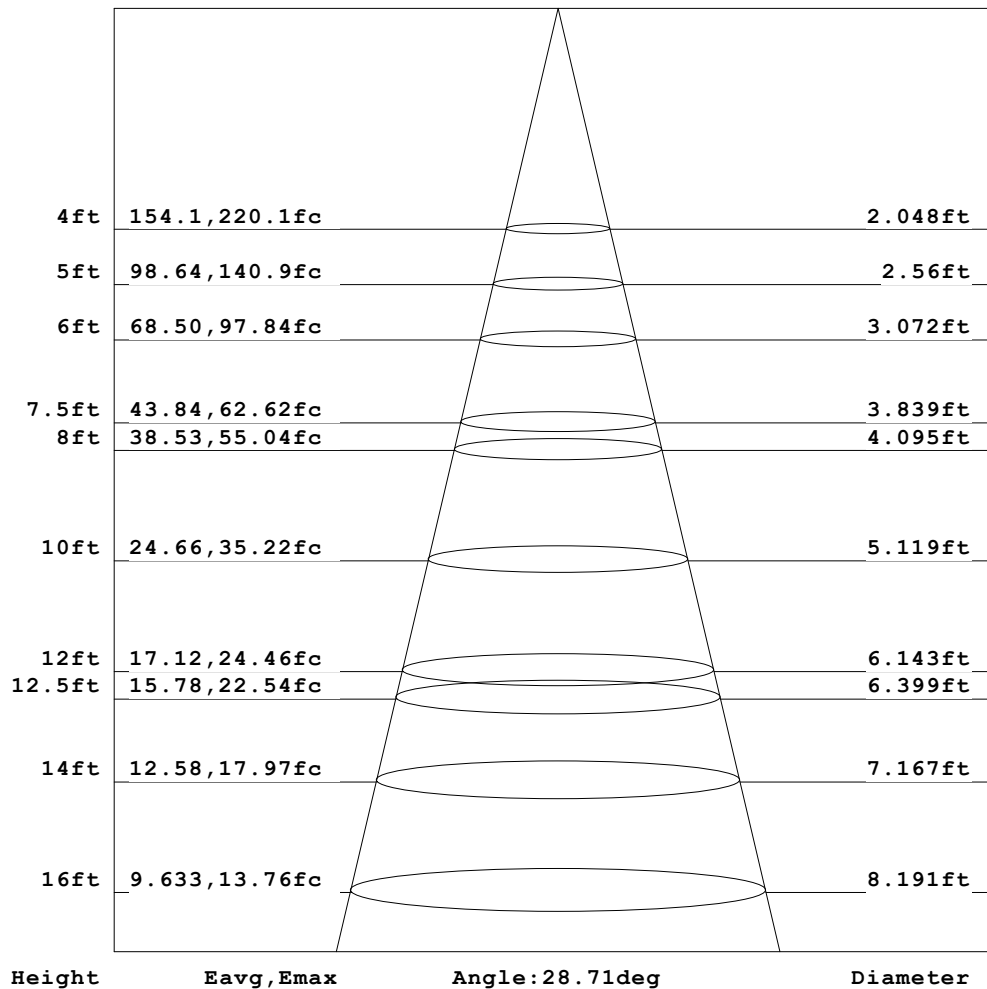
C Range: 0 - 360DEG  
 C Interval: For a lens beam angle of 24°  
 Test Speed: HIGH  
 Temperature: 77.54°F  
 Operators: zoe  
 Test Date: 2024-8-15

γ Range: 0 - 180DEG  
 γ Interval: 1.0DEG  
 Test System: EVERFINE GO-SPEX500\_V1 SYSTEM V2.00.461  
 Humidity: 65.0%  
 Test Distance: 124.409" [K=1.0000]  
 Remarks: LAMP: BXRH-30G10T0-G-83 Ra: 90  
 LENS: PM-1084A 24R  
 NO DRIVER: 500mA  
 30minutes warm-up

**AAI Figure**

|  |                  |                        |
|--|------------------|------------------------|
| Test:U:17.659V I:0.5000A P:8.8295W PF:1.0000 Freq:49.99Hz<br>Lamp Flux:1124.6x1 lm |                  |                        |
| NAME: CTL-M-1.5-30K-24-RD-FX   | TYPE:            | WEIGHT:                |
| SPEC.: 3000K   | DIM.:            | SERIAL No.: 2408151136 |
| MFR.: MERCURY LIGHTING   | SUR.: 0.001256m2 | Shielding Angle:       |

Flux out:556.2 lm



Note: The Curves indicate the illuminated area and the average illumination when the luminaire is at different distance.

C Range: 0 - 360DEG

C Interval: For a lens beam angle of 24°

Test Speed: HIGH

Temperature: 77.54°F

Operators: zoe

Test Date: 2024-8-15

γ Range: 0 - 180DEG

γ Interval: 1.0DEG

Test System: EVERFINE GO-SPEX500\_V1 SYSTEM V2.00.461

Humidity: 65.0%

Test Distance: 124.409" [K=1.0000]

Remarks: LAMP: BXRH-30G10T0-G-83 Ra: 90

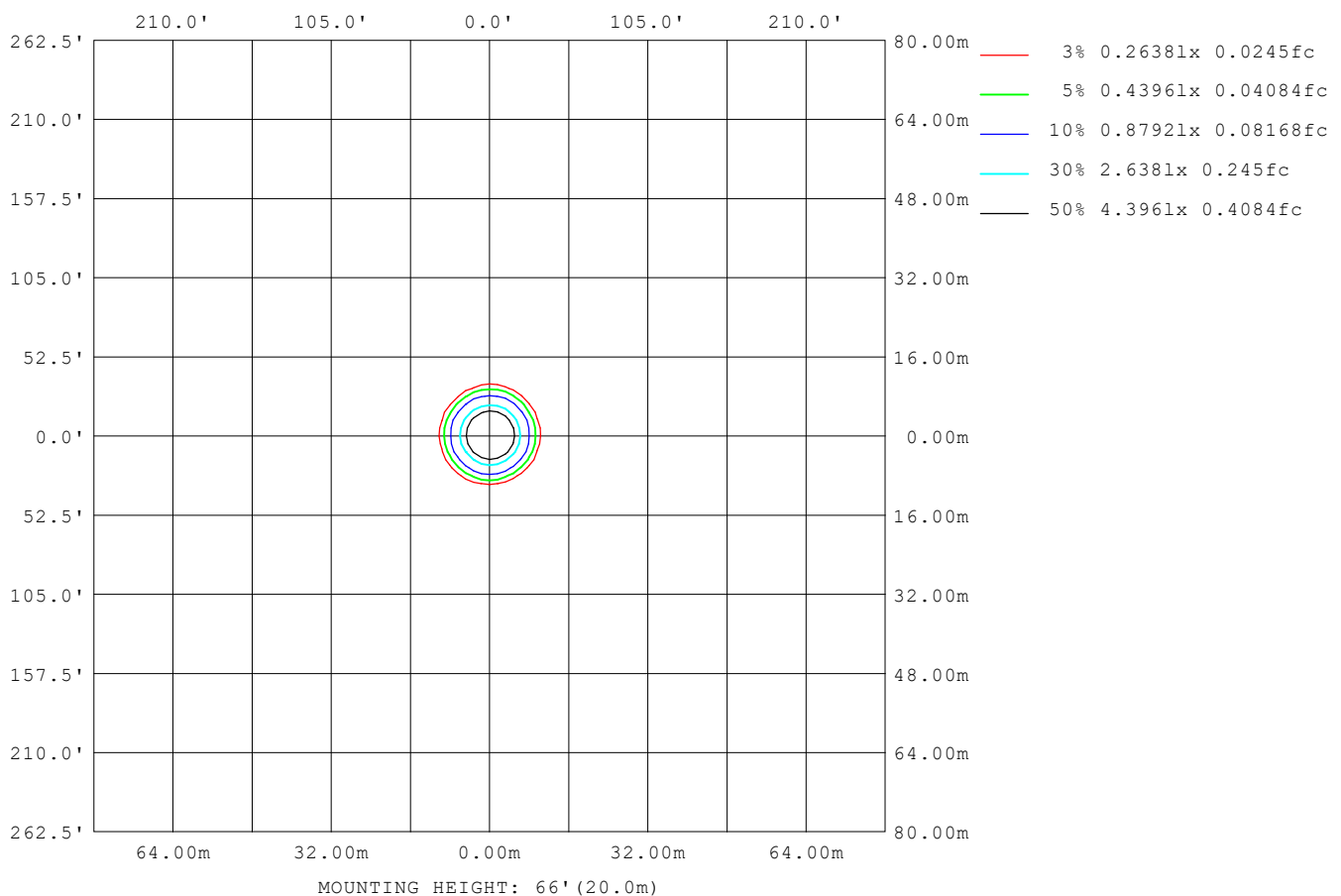
LENS: PM-1084A 24R

NO DRIVER: 500mA

30minutes warm-up

**ISOLUX DIAGRAM**

|  |                  |                        |
|--|------------------|------------------------|
| Test:U:17.659V I:0.5000A P:8.8295W PF:1.0000 Freq:49.99Hz<br>Lamp Flux:1124.6x1 lm |                  |                        |
| NAME: CTL-M-1.5-30K-24-RD-FX   | TYPE:            | WEIGHT:                |
| SPEC.: 3000K   | DIM.:            | SERIAL No.: 2408151136 |
| MFR.: MERCURY LIGHTING   | SUR.: 0.001256m2 | Shielding Angle:       |



C Range: 0 - 360DEG  
 C Interval: For a lens beam angle of 24°  
 Test Speed: HIGH  
 Temperature: 77.54°F  
 Operators: zoe  
 Test Date: 2024-8-15

γ Range: 0 - 180DEG  
 γ Interval: 1.0DEG  
 Test System: EVERFINE GO-SPEX500\_V1 SYSTEM V2.00.461  
 Humidity: 65.0%  
 Test Distance: 124.409" [K=1.0000]  
 Remarks: LAMP: BXRH-30G10T0-G-83 Ra:90  
 LENS: PM-1084A 24R  
 NO DRIVER: 500mA  
 30minutes warm-up

**LED Avg.L Report**

|  |                  |                        |
|--|------------------|------------------------|
| Test:U:17.659V I:0.5000A P:8.8295W PF:1.0000 Freq:49.99Hz<br>Lamp Flux:1124.6x1 lm |                  |                        |
| NAME: CTL-M-1.5-30K-24-RD-FX   | TYPE:            | WEIGHT:                |
| SPEC.: 3000K   | DIM.:            | SERIAL No.: 2408151136 |
| MFR.: MERCURY LIGHTING   | SUR.: 0.001256m2 | Shielding Angle:       |

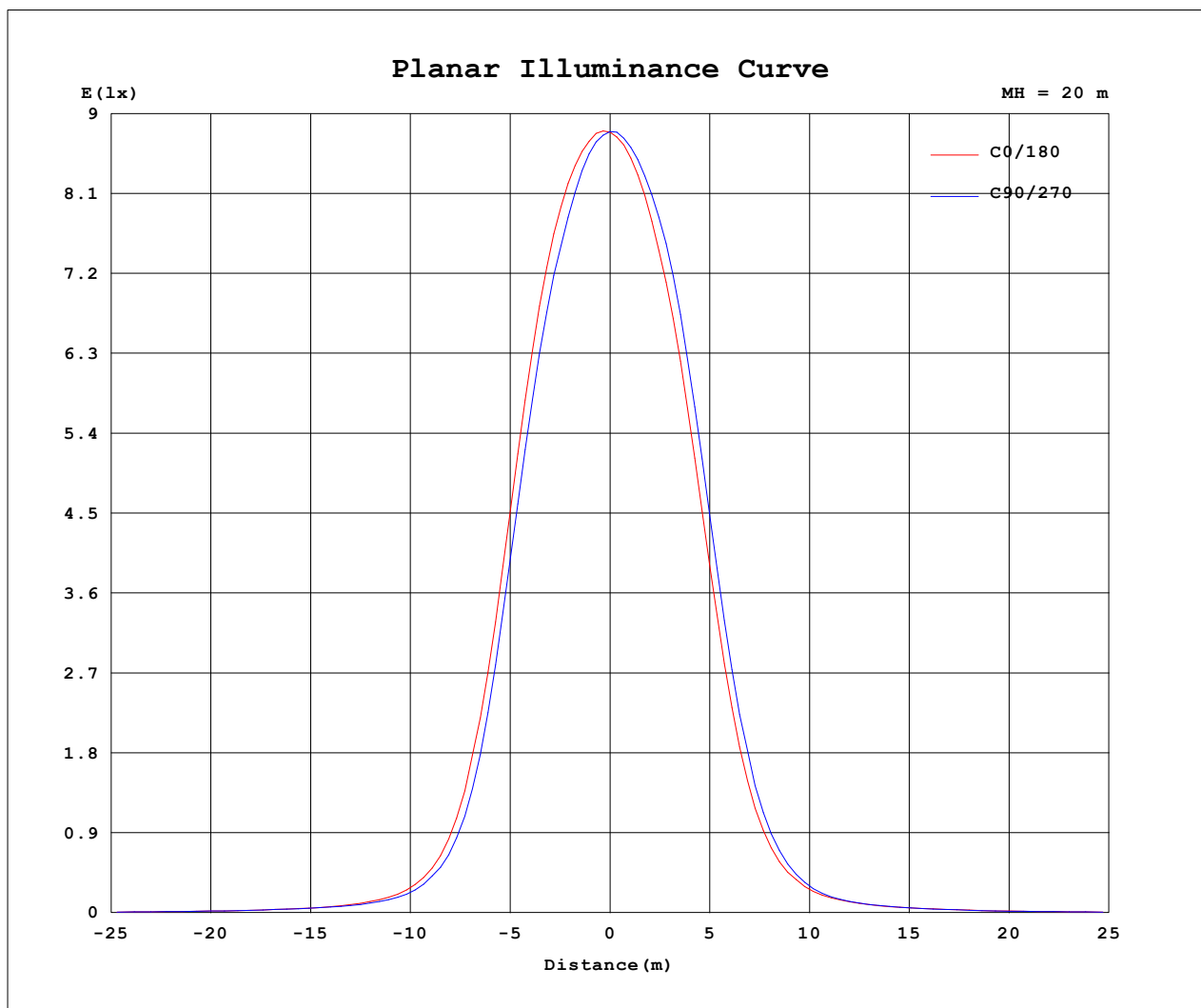
| AvgL             | cd/m2 |
|------------------|-------|
| L_0~180 (65) av  | 8160  |
| L_0~180 (75) av  | 4731  |
| L_0~180 (85) av  | 3456  |
| L_90~270 (65) av | 8149  |
| L_90~270 (75) av | 4759  |
| L_90~270 (85) av | 3499  |
| L_45 (65) av     | 8156  |
| L_45 (75) av     | 4720  |
| L_45 (85) av     | 3344  |

Standard: GB/T 29293-2012

C Range: 0 - 360DEG  
 C Interval: For a lens beam angle of 24°  
 Test Speed: HIGH  
 Temperature: 77.54 °F  
 Operators: zoe  
 Test Date: 2024-8-15

γ Range: 0 - 180DEG  
 γ Interval: 1.0DEG  
 Test System: EVERFINE GO-SPEX500\_V1 SYSTEM V2.00.461  
 Humidity: 65.0%  
 Test Distance: 124.409" [K=1.0000]  
 Remarks: LAMP: BXRH-30G10T0-G-83 Ra: 90  
 LENS: PM-1084A 24R  
 NO DRIVER: 500mA  
 30minutes warm-up

### Planar Illuminance Curve



C Range: 0 - 360DEG

C Interval: For a lens beam angle of 24°

Test Speed: HIGH

Temperature: 77.54 °F

Operators: zoe

Test Date: 2024-8-15

γ Range: 0 - 180DEG

γ Interval: 1.0DEG

Test System: EVERFINE GO-SPEX500\_V1 SYSTEM V2.00.461

Humidity: 65.0%

Test Distance: 124.409" [K=1.0000]

Remarks: LAMP: BXRH-30G10T0-G-83 Ra: 90

LENS: PM-1084A 24R

NO DRIVER: 500mA

30minutes warm-up

**LUMINOUS DISTRIBUTION INTENSITY DATA**

|  |                  |                        |
|--|------------------|------------------------|
| Test:U:17.659V I:0.5000A P:8.8295W PF:1.0000 Freq:49.99Hz<br>Lamp Flux:1124.6x1 lm |                  |                        |
| NAME: CTL-M-1.5-30K-24-RD-FX   | TYPE:            | WEIGHT:                |
| SPEC.: 3000K   | DIM.:            | SERIAL No.: 2408151136 |
| MFR.: MERCURY LIGHTING   | SUR.: 0.001256m2 | Shielding Angle:       |

Table--1

UNIT: cd

| C (DEG)<br>(DEG) | 0    | 30   | 60   | 90   | 120  | 150  | 180  | 210  | 240  | 270  | 300  | 330  |  |  |  |  |  |  |
|------------------|------|------|------|------|------|------|------|------|------|------|------|------|--|--|--|--|--|--|
| 0                | 3518 | 3518 | 3518 | 3518 | 3518 | 3518 | 3518 | 3518 | 3518 | 3518 | 3518 | 3518 |  |  |  |  |  |  |
| 5                | 3406 | 3391 | 3334 | 3281 | 3261 | 3242 | 3271 | 3308 | 3335 | 3357 | 3382 | 3403 |  |  |  |  |  |  |
| 10               | 2863 | 2801 | 2700 | 2638 | 2583 | 2555 | 2605 | 2689 | 2759 | 2821 | 2880 | 2880 |  |  |  |  |  |  |
| 15               | 1733 | 1666 | 1544 | 1501 | 1445 | 1439 | 1490 | 1574 | 1654 | 1723 | 1804 | 1770 |  |  |  |  |  |  |
| 20               | 662  | 609  | 536  | 525  | 514  | 533  | 569  | 614  | 651  | 691  | 731  | 694  |  |  |  |  |  |  |
| 25               | 215  | 202  | 174  | 174  | 177  | 186  | 202  | 212  | 226  | 234  | 245  | 228  |  |  |  |  |  |  |
| 30               | 92.0 | 82.9 | 75.1 | 78.4 | 83.6 | 86.7 | 88.8 | 91.2 | 88.6 | 93.0 | 100  | 95.6 |  |  |  |  |  |  |
| 35               | 50.9 | 48.4 | 46.5 | 48.0 | 49.6 | 51.4 | 52.3 | 52.5 | 51.5 | 52.7 | 54.7 | 52.1 |  |  |  |  |  |  |
| 40               | 33.9 | 33.7 | 33.0 | 33.6 | 34.7 | 35.4 | 35.5 | 35.4 | 35.2 | 34.9 | 34.8 | 34.1 |  |  |  |  |  |  |
| 45               | 23.4 | 23.8 | 23.7 | 23.8 | 24.2 | 23.8 | 23.7 | 23.7 | 23.6 | 23.0 | 23.1 | 22.9 |  |  |  |  |  |  |
| 50               | 16.6 | 16.8 | 16.8 | 16.7 | 16.4 | 16.4 | 16.5 | 16.4 | 16.4 | 16.0 | 16.1 | 16.2 |  |  |  |  |  |  |
| 55               | 11.1 | 11.1 | 11.1 | 11.1 | 10.7 | 10.8 | 10.8 | 10.8 | 10.9 | 10.6 | 10.5 | 10.9 |  |  |  |  |  |  |
| 60               | 7.21 | 7.28 | 7.29 | 7.34 | 7.23 | 7.15 | 7.08 | 7.07 | 7.09 | 7.02 | 7.01 | 7.11 |  |  |  |  |  |  |
| 65               | 4.33 | 4.41 | 4.41 | 4.48 | 4.45 | 4.40 | 4.33 | 4.28 | 4.26 | 4.18 | 4.18 | 4.23 |  |  |  |  |  |  |
| 70               | 2.39 | 2.42 | 2.43 | 2.45 | 2.44 | 2.42 | 2.38 | 2.35 | 2.34 | 2.33 | 2.34 | 2.35 |  |  |  |  |  |  |
| 75               | 1.55 | 1.56 | 1.57 | 1.59 | 1.57 | 1.55 | 1.53 | 1.50 | 1.50 | 1.50 | 1.51 | 1.52 |  |  |  |  |  |  |
| 80               | 0.89 | 0.90 | 0.90 | 0.92 | 0.90 | 0.88 | 0.88 | 0.85 | 0.86 | 0.86 | 0.86 | 0.87 |  |  |  |  |  |  |
| 85               | 0.39 | 0.38 | 0.38 | 0.40 | 0.38 | 0.37 | 0.37 | 0.35 | 0.37 | 0.36 | 0.36 | 0.37 |  |  |  |  |  |  |
| 90               | 0.00 | 0.00 | 0.00 | 0.00 | 0.00 | 0.00 | 0.00 | 0.00 | 0.00 | 0.00 | 0.00 | 0.00 |  |  |  |  |  |  |
| 95               | 0.00 | 0.00 | 0.00 | 0.00 | 0.00 | 0.00 | 0.00 | 0.00 | 0.00 | 0.00 | 0.00 | 0.00 |  |  |  |  |  |  |
| 100              | 0.00 | 0.00 | 0.00 | 0.00 | 0.00 | 0.00 | 0.00 | 0.00 | 0.00 | 0.00 | 0.00 | 0.00 |  |  |  |  |  |  |
| 105              | 0.00 | 0.00 | 0.00 | 0.00 | 0.00 | 0.00 | 0.00 | 0.00 | 0.00 | 0.00 | 0.00 | 0.00 |  |  |  |  |  |  |
| 110              | 0.00 | 0.00 | 0.00 | 0.00 | 0.00 | 0.00 | 0.00 | 0.00 | 0.00 | 0.00 | 0.00 | 0.00 |  |  |  |  |  |  |
| 115              | 0.00 | 0.00 | 0.00 | 0.00 | 0.00 | 0.00 | 0.00 | 0.00 | 0.00 | 0.00 | 0.00 | 0.00 |  |  |  |  |  |  |
| 120              | 0.00 | 0.00 | 0.00 | 0.00 | 0.00 | 0.00 | 0.00 | 0.00 | 0.00 | 0.00 | 0.00 | 0.00 |  |  |  |  |  |  |
| 125              | 0.00 | 0.00 | 0.00 | 0.00 | 0.00 | 0.00 | 0.00 | 0.00 | 0.00 | 0.00 | 0.00 | 0.00 |  |  |  |  |  |  |
| 130              | 0.00 | 0.00 | 0.00 | 0.00 | 0.00 | 0.00 | 0.00 | 0.00 | 0.00 | 0.00 | 0.00 | 0.00 |  |  |  |  |  |  |
| 135              | 0.00 | 0.00 | 0.00 | 0.00 | 0.00 | 0.00 | 0.00 | 0.00 | 0.00 | 0.00 | 0.00 | 0.00 |  |  |  |  |  |  |
| 140              | 0.00 | 0.00 | 0.00 | 0.00 | 0.00 | 0.00 | 0.00 | 0.00 | 0.00 | 0.00 | 0.00 | 0.00 |  |  |  |  |  |  |
| 145              | 0.00 | 0.00 | 0.00 | 0.00 | 0.00 | 0.00 | 0.00 | 0.00 | 0.00 | 0.00 | 0.00 | 0.00 |  |  |  |  |  |  |
| 150              | 0.00 | 0.00 | 0.00 | 0.00 | 0.00 | 0.00 | 0.00 | 0.00 | 0.00 | 0.00 | 0.00 | 0.00 |  |  |  |  |  |  |
| 155              | 0.00 | 0.00 | 0.00 | 0.00 | 0.00 | 0.00 | 0.00 | 0.00 | 0.00 | 0.00 | 0.00 | 0.00 |  |  |  |  |  |  |
| 160              | 0.00 | 0.00 | 0.00 | 0.00 | 0.00 | 0.00 | 0.00 | 0.00 | 0.00 | 0.00 | 0.00 | 0.00 |  |  |  |  |  |  |
| 165              | 0.00 | 0.00 | 0.00 | 0.00 | 0.00 | 0.00 | 0.00 | 0.00 | 0.00 | 0.00 | 0.00 | 0.00 |  |  |  |  |  |  |
| 170              | 0.00 | 0.00 | 0.00 | 0.00 | 0.00 | 0.00 | 0.00 | 0.00 | 0.00 | 0.00 | 0.00 | 0.00 |  |  |  |  |  |  |
| 175              | 0.00 | 0.00 | 0.00 | 0.00 | 0.00 | 0.00 | 0.00 | 0.00 | 0.00 | 0.00 | 0.00 | 0.00 |  |  |  |  |  |  |
| 180              | 0.00 | 0.00 | 0.00 | 0.00 | 0.00 | 0.00 | 0.00 | 0.00 | 0.00 | 0.00 | 0.00 | 0.00 |  |  |  |  |  |  |

C Range: 0 - 360DEG

C Interval: For a lens beam angle of 24°

Test Speed: HIGH

Temperature: 77.54°F

Operators: zoe

Test Date: 2024-8-15

γ Range: 0 - 180DEG

γ Interval: 1.0DEG

Test System: EVERFINE GO-SPEX500\_V1 SYSTEM V2.00.461

Humidity: 65.0%

Test Distance: 124.409" [K=1.0000]

Remarks: LAMP: BXRH-30G10T0-G-83 Ra: 90

LENS: PM-1084A 24R

NO DRIVER: 500mA

30minutes warm-up