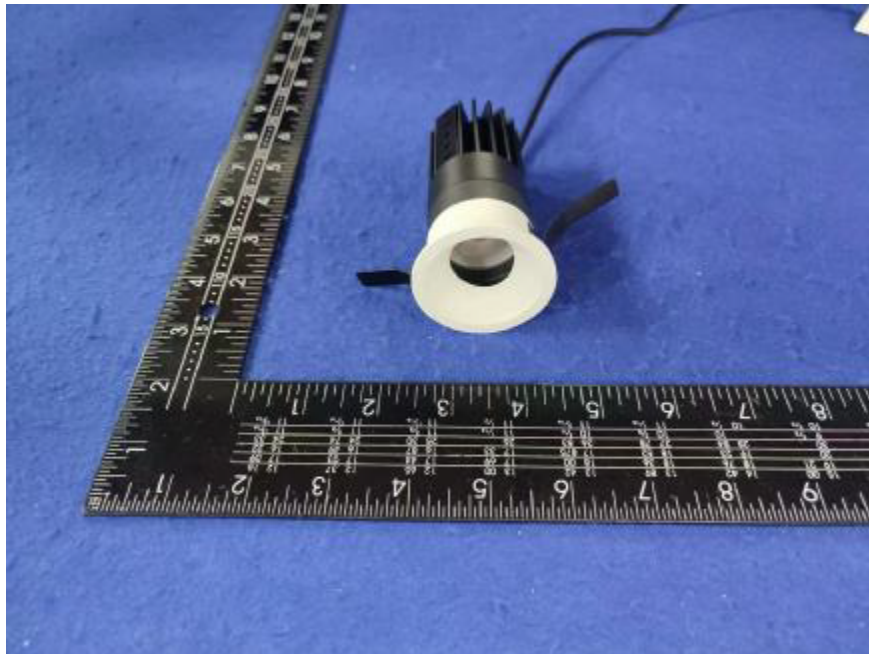


Photometric report for Flanged and Flangeless Trim



Light Output Ratio:	61.1%	
Luminaire Power:	8.821 W	
SHR Nominal:	0.00	Calculated using the TM5
SHR Maximum:	0.30	fine grid method.

C Range: 0 - 360DEG	γ Range: 0 - 180DEG
C Interval: For a lens beam angle of 15°	γ Interval: 1.0DEG
Test Speed: HIGH	Test System: EVERFINE GO-SPEX500_V1 SYSTEM V2.00.461
Temperature: 77.54°F	Humidity: 65.0%
Operators: zoe	Test Distance: 124.409" [K=1.0000]
Test Date: 2024-8-14	Remarks: LAMP: BXRH-30G10T0-G-83 Ra: 90
	LENS: PM-1084 15R
	NO DRIVER: 500mA
	30minutes warm-up

LUMINOUS INTENSITY DISTRIBUTION DIAGRAM

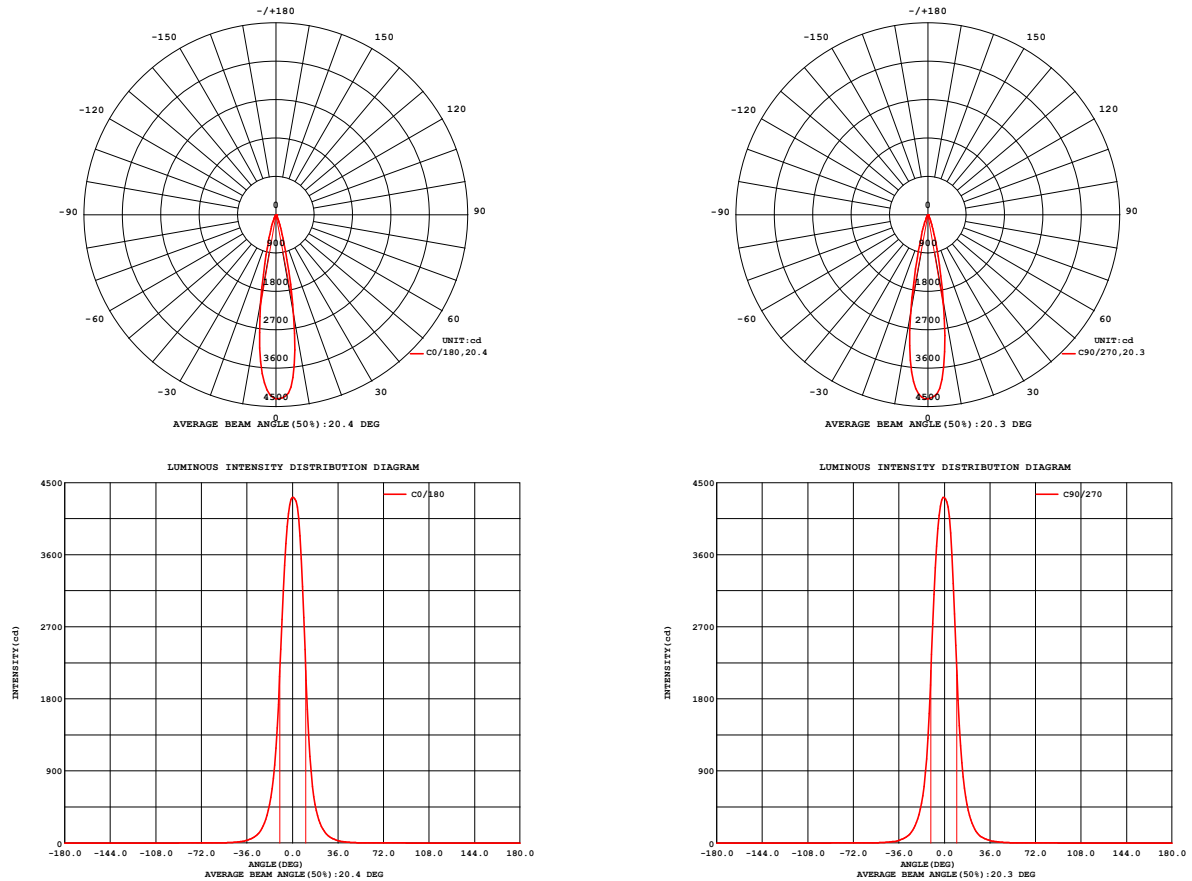


Fig. C0/C180

Fig. C90/C270

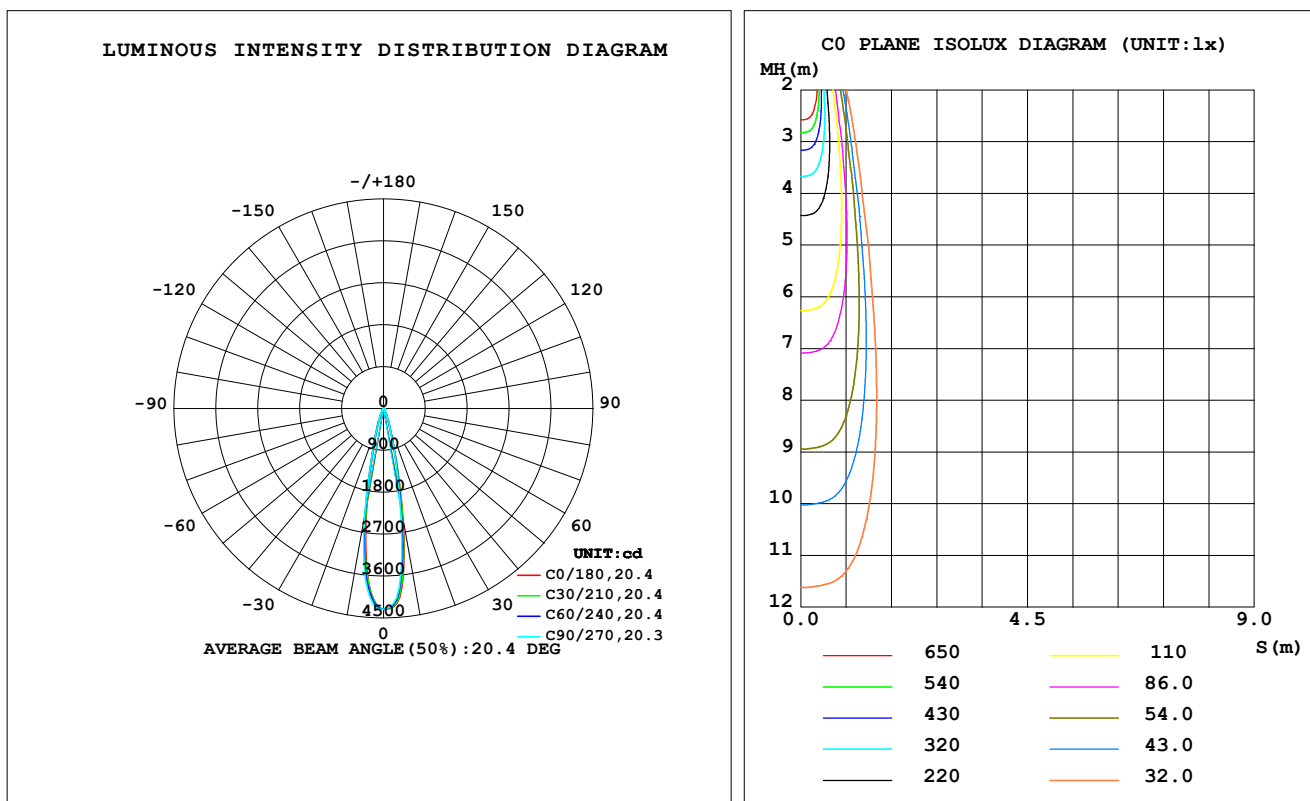
C Range: 0 - 360DEG
C Interval: For a lens beam angle of 15°
Test Speed: HIGH
Temperature: 77.54°F
Operators: zoe
Test Date: 2024-8-14

γ Range: 0 - 180DEG
γ Interval: 1.0DEG
Test System: EVERFINE GO-SPEX500_V1 SYSTEM V2.00.461
Humidity: 65.0%
Test Distance: 124.409" [K=1.0000]
Remarks: LAMP: BXRH-30G10T0-G-83 Ra: 90
LENS: PM-1084 15R
NO DRIVER: 500mA
30minutes warm-up

LUMINAIRE PHOTOMETRIC TEST REPORT

Test:U:17.642V I:0.5000A P:8.8210W PF:1.0000 Freq:49.99Hz Lamp Flux:1124.6x1 lm		
NAME: CTL-M-1.5-30K-15-RD-AD	TYPE:	WEIGHT:
SPEC.: 3000K	DIM.:	SERIAL No.: 2408141118
MFR.: MERCURY LIGHTING	SUR.: 0.001256m2	Shielding Angle:

DATA OF LAMP		PHOTOMETRIC DATA Eff: 77.84 lm/W			
MODEL	Brideglux	I _{max} (cd)	4318	S/MH (C0/180)	0.33
NOMINAL POWER (W)	9	LOR (%)	61.1	S/MH (C90/270)	0.34
RATED VOLTAGE (V)	18	TOTAL FLUX (lm)	686.59	☒ UP, DN (C0-180)	0.0, 30.1
NOMINAL FLUX (lm)	1124.6	CIE CLASS	DIRECT	☒ UP, DN (C180-360)	0.0, 30.9
LAMPS INSIDE	1	☒ up (%)	0.0	CIBSE SHR NOM	0.00
TEST VOLTAGE (V)	18	☒ down (%)	61.1	CIBSE SHR MAX	0.30



C Range: 0 - 360DEG

C Interval: For a lens beam angle of 15°

Test Speed: HIGH

Temperature: 77.54°F

Operators: zoe

Test Date: 2024-8-14

γ Range: 0 - 180DEG

γ Interval: 1.0DEG

Test System: EVERFINE GO-SPEX500_V1 SYSTEM V2.00.461

Humidity: 65.0%

Test Distance: 124.409" [K=1.0000]

Remarks: LAMP: BXRH-30G10T0-G-83 Ra: 90

LENS: PM-1084 15R

NO DRIVER: 500mA

30minutes warm-up

ZONAL FLUX DIAGRAM
ZONAL FLUX DIAGRAM:

°	C0	C45	C90	C135	C180	C225	C270	C315	°	zone	total	%lum,lamp
10	2417	2276	2093	2005	2075	2196	2355	2460	0- 10	316.3	316.3	46.1,28.1
20	340.6	344.9	343.3	341.5	345.6	358.4	354.5	346.1	10- 20	256.9	573.2	83.5,51
30	71.23	70.78	69.83	71.13	73.64	75.19	73.53	72.29	20- 30	75.82	649.0	94.5,57.7
40	16.92	17.15	18.26	18.44	17.75	17.63	18.06	17.39	30- 40	24.22	673.2	98.1,59.9
50	4.040	4.209	4.819	5.173	4.937	4.922	4.925	4.458	40- 50	7.794	681.0	99.2,60.6
60	1.961	2.052	2.176	2.500	2.700	2.889	2.801	2.313	50- 60	2.695	683.7	99.6,60.8
70	0.9710	1.031	1.083	1.043	1.360	1.587	0.9202	0.9512	60- 70	1.986	685.7	99.9,61
80	0.3738	0.3962	0.4226	0.4069	0.4006	0.3690	0.3703	0.3711	70- 80	0.7116	686.4	100,61
90	0	0	0	0	0	0	0	0	80- 90	0.1928	686.6	100,61.1
100	0	0	0	0	0	0	0	0	90-100	0	686.6	100,61.1
110	0	0	0	0	0	0	0	0	100-110	0	686.6	100,61.1
120	0	0	0	0	0	0	0	0	110-120	0	686.6	100,61.1
130	0	0	0	0	0	0	0	0	120-130	0	686.6	100,61.1
140	0	0	0	0	0	0	0	0	130-140	0	686.6	100,61.1
150	0	0	0	0	0	0	0	0	140-150	0	686.6	100,61.1
160	0	0	0	0	0	0	0	0	150-160	0	686.6	100,61.1
170	0	0	0	0	0	0	0	0	160-170	0	686.6	100,61.1
180	0	0	0	0	0	0	0	0	170-180	0	686.6	100,61.1
DEG	LUMINOUS INTENSITY:cd									UNIT:lm		

C Range: 0 - 360DEG

C Interval: For a lens beam angle of 15°

Test Speed: HIGH

Temperature:77.54°F

Operators:zoe

Test Date:2024-8-14

γ Range: 0 - 180DEG

γInterval: 1.0DEG

Test System:EVERFINE GO-SPEX500_V1 SYSTEM V2.00.461

Humidity:65.0%

Test Distance:124.409" [K=1.0000]

Remarks: LAMP:BXRH-30G10T0-G-83 Ra:90

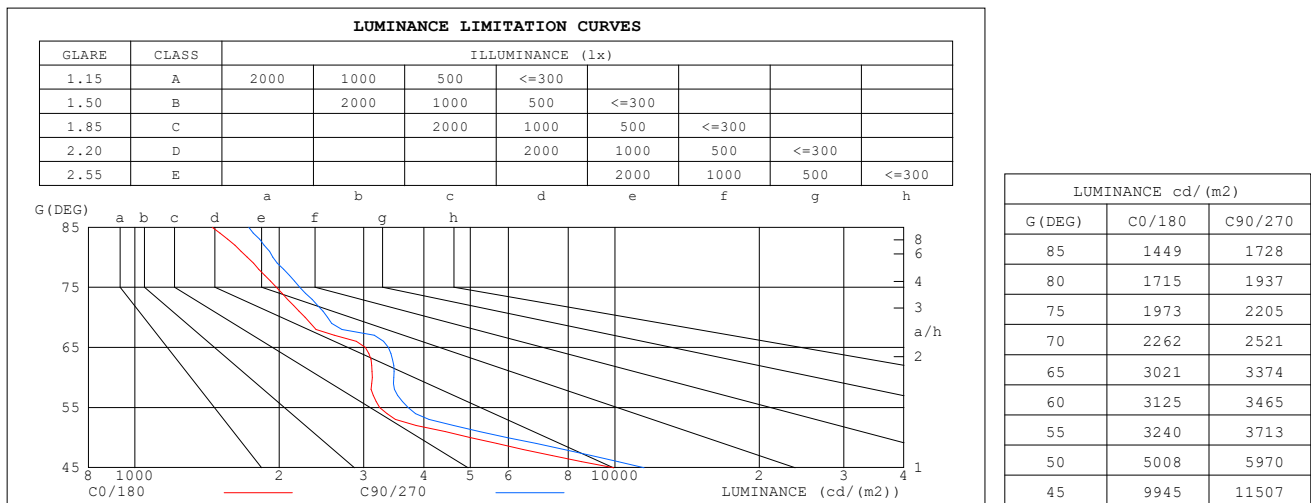
LENS:PM-1084 15R

NO DRIVER:500mA

30minutes warm-up

LUMINANCE LIMITATION CURVES

Test:U:17.642V I:0.5000A P:8.8210W PF:1.0000 Freq:49.99Hz Lamp Flux:1124.6x1 lm		
NAME: CTL-M-1.5-30K-15-RD-AD	TYPE:	WEIGHT:
SPEC.: 3000K	DIM.:	SERIAL No.: 2408141118
MFR.: MERCURY LIGHTING	SUR.: 0.001256m2	Shielding Angle:



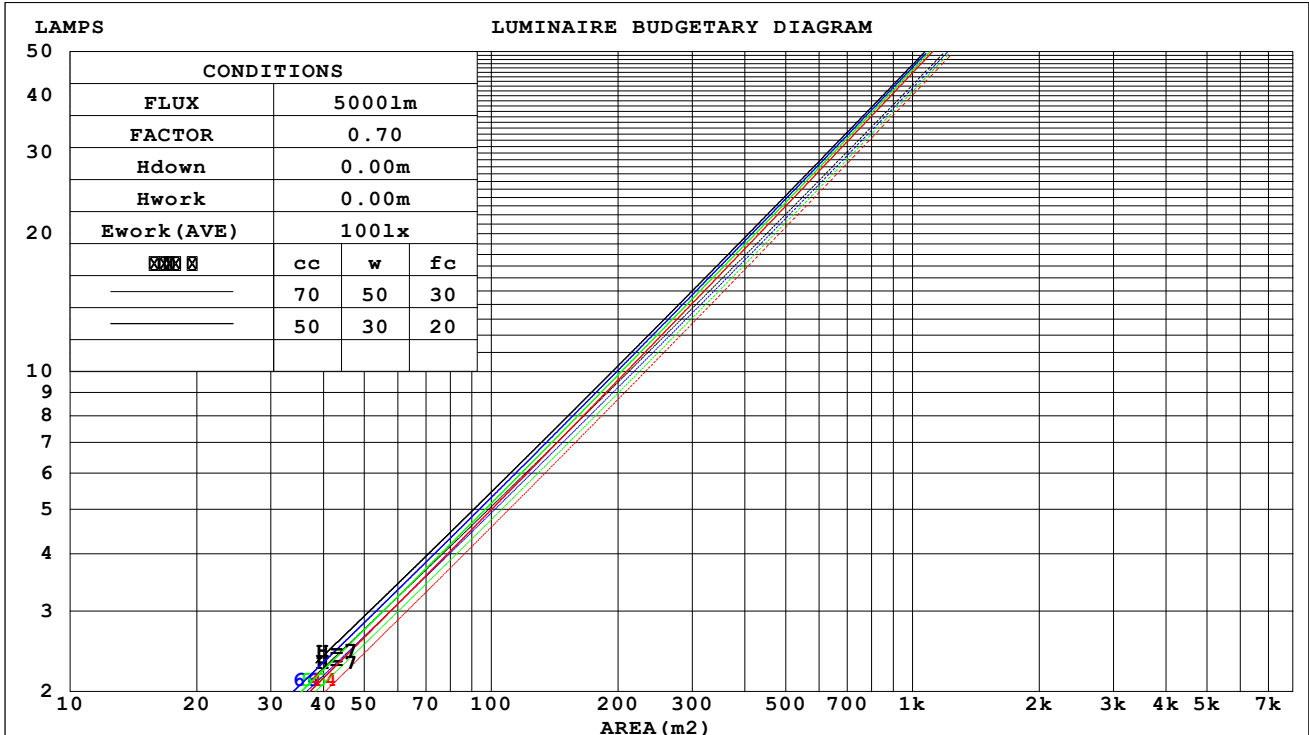
C Range: 0 - 360DEG	γ Range: 0 - 180DEG
C Interval: For a lens beam angle of 15°	γ Interval: 1.0DEG
Test Speed: HIGH	Test System: EVERFINE GO-SPEX500_V1 SYSTEM V2.00.461
Temperature: 77.54°F	Humidity: 65.0%
Operators: zoe	Test Distance: 124.409" [K=1.0000]
Test Date: 2024-8-14	Remarks: LAMP: BXRH-30G10T0-G-83 Ra: 90
	LENS: PM-1084 15R
	NO DRIVER: 500mA
	30minutes warm-up

CU AND LUMINAIRE BUDGETARY ESTIMATE DIAGRAM

 Test:U:17.642V I:0.5000A P:8.8210W PF:1.0000 Freq:49.99Hz
 Lamp Flux:1124.6x1 lm

NAME: CTL-M-1.5-30K-15-RD-AD	TYPE:	WEIGHT:
SPEC.: 3000K	DIM.:	SERIAL No.: 2408141118
MFR.: MERCURY LIGHTING	SUR.: 0.001256m2	Shielding Angle:

cc	80%			70%			50%			30%			10%			0														
w	50%	30%	10%	50%	30%	10%	50%	30%	10%	50%	30%	10%	50%	30%	10%	0														
fc	20%			20%			20%			20%			20%			0														
RCR	RCR:Room Cavity Ratio															Coefficients of Utilization(CU)														
0.0	.73	.73	.73	.71	.71	.71	.68	.68	.68	.65	.65	.65	.62	.62	.62	.61														
1.0	.69	.68	.67	.68	.67	.66	.65	.65	.64	.63	.63	.62	.61	.61	.60	.59														
2.0	.66	.64	.63	.65	.64	.62	.63	.62	.61	.61	.60	.60	.60	.59	.58	.58														
3.0	.64	.61	.60	.63	.61	.59	.61	.60	.58	.60	.59	.58	.59	.58	.57	.56														
4.0	.61	.59	.57	.61	.59	.57	.59	.58	.56	.58	.57	.56	.57	.56	.55	.54														
5.0	.59	.57	.55	.59	.57	.55	.58	.56	.55	.57	.55	.54	.56	.55	.54	.53														
6.0	.58	.55	.53	.57	.55	.53	.56	.54	.53	.56	.54	.53	.55	.53	.52	.52														
7.0	.56	.54	.52	.56	.53	.52	.55	.53	.52	.54	.53	.51	.54	.52	.51	.50														
8.0	.54	.52	.51	.54	.52	.50	.54	.52	.50	.53	.51	.50	.53	.51	.50	.49														
9.0	.53	.51	.49	.53	.51	.49	.52	.50	.49	.52	.50	.49	.52	.50	.49	.48														
10.0	.52	.50	.48	.52	.50	.48	.51	.49	.48	.51	.49	.48	.51	.49	.48	.47														



C Range: 0 - 360DEG

C Interval: For a lens beam angle of 15°

Test Speed: HIGH

Temperature: 77.54°F

Operators: zoe

Test Date: 2024-8-14

γ Range: 0 - 180DEG

γ Interval: 1.0DEG

Test System: EVERFINE GO-SPEX500_V1 SYSTEM V2.00.461

Humidity: 65.0%

Test Distance: 124.409" [K=1.0000]

Remarks: LAMP: BXRH-30G10T0-G-83 Ra: 90

LENS: PM-1084 15R

NO DRIVER: 500mA

30minutes warm-up

WEC AND CCEC

Test:U:17.642V I:0.5000A P:8.8210W PF:1.0000 Freq:49.99Hz Lamp Flux:1124.6x1 lm		
NAME: CTL-M-1.5-30K-15-RD-AD	TYPE:	WEIGHT:
SPEC.: 3000K	DIM.:	SERIAL No.: 2408141118
MFR.: MERCURY LIGHTING	SUR.: 0.001256m2	Shielding Angle:

cc	80%			70%			50%			30%			10%			0
w	50%	30%	10%	50%	30%	10%	50%	30%	10%	50%	30%	10%	50%	30%	10%	0
fc	20%			20%			20%			20%			20%			0
RCR	RCR:Room Cavity Ratio						Wall Exitance Coefficients(WEC)									
0.0																
1.0	.080	.045	.014	.076	.043	.014	.068	.039	.013	.061	.035	.011	.055	.032	.010	
2.0	.074	.040	.012	.070	.039	.012	.064	.036	.011	.058	.033	.010	.053	.030	.009	
3.0	.068	.036	.011	.066	.035	.011	.060	.033	.010	.056	.030	.009	.051	.028	.009	
4.0	.064	.033	.010	.061	.032	.009	.057	.030	.009	.053	.028	.009	.049	.027	.008	
5.0	.060	.030	.009	.058	.030	.009	.054	.028	.008	.051	.027	.008	.047	.025	.008	
6.0	.056	.028	.008	.055	.028	.008	.051	.026	.008	.048	.025	.007	.046	.024	.007	
7.0	.053	.026	.007	.052	.026	.007	.049	.025	.007	.046	.024	.007	.044	.023	.007	
8.0	.050	.025	.007	.049	.024	.007	.047	.023	.007	.045	.023	.007	.043	.022	.006	
9.0	.048	.023	.006	.047	.023	.006	.045	.022	.006	.043	.022	.006	.041	.021	.006	
10.0	.046	.022	.006	.045	.022	.006	.043	.021	.006	.041	.021	.006	.040	.020	.006	

cc	80%			70%			50%			30%			10%			0
w	50%	30%	10%	50%	30%	10%	50%	30%	10%	50%	30%	10%	50%	30%	10%	0
fc	20%			20%			20%			20%			20%			0
RCR	RCR:Room Cavity Ratio						Ceiling Cavity Exitance Coefficients(CCEC)									
0.0	.116	.116	.116	.099	.099	.099	.068	.068	.068	.039	.039	.039	.012	.012	.012	
1.0	.103	.096	.091	.088	.083	.078	.060	.057	.054	.035	.033	.031	.011	.011	.010	
2.0	.091	.081	.072	.078	.070	.063	.054	.048	.044	.031	.028	.026	.010	.009	.008	
3.0	.082	.069	.059	.070	.060	.051	.048	.041	.036	.028	.024	.021	.009	.008	.007	
4.0	.074	.060	.049	.063	.052	.042	.044	.036	.030	.025	.021	.018	.008	.007	.006	
5.0	.067	.052	.041	.058	.045	.036	.040	.031	.025	.023	.018	.015	.007	.006	.005	
6.0	.062	.046	.035	.053	.040	.030	.037	.028	.021	.021	.016	.013	.007	.005	.004	
7.0	.057	.041	.030	.049	.035	.026	.034	.025	.018	.020	.015	.011	.006	.005	.004	
8.0	.053	.037	.026	.045	.032	.022	.031	.022	.016	.018	.013	.009	.006	.004	.003	
9.0	.049	.033	.022	.042	.029	.019	.029	.020	.014	.017	.012	.008	.006	.004	.003	
10.0	.046	.030	.020	.040	.026	.017	.028	.018	.012	.016	.011	.007	.005	.004	.002	

C Range: 0 - 360DEG

C Interval: For a lens beam angle of 15°

Test Speed: HIGH

Temperature:77.54°F

Operators:zoe

Test Date:2024-8-14

γ Range: 0 - 180DEG

γInterval: 1.0DEG

Test System:EVERFINE GO-SPEX500_V1 SYSTEM V2.00.461

Humidity:65.0%

Test Distance:124.409" [K=1.0000]

Remarks: LAMP:BXRH-30G10T0-G-83 Ra:90

LENS:PM-1084 15R

NO DRIVER:500mA

30minutes warm-up

UGR(Unified Glare Rating) Table

Test:U:17.642V I:0.5000A P:8.8210W PF:1.0000 Freq:49.99Hz Lamp Flux:1124.6x1 lm											
NAME: CTL-M-1.5-30K-15-RD-AD					TYPE:			WEIGHT:			
SPEC.: 3000K					DIM.:			SERIAL No.: 2408141118			
MFR.: MERCURY LIGHTING					SUR.: 0.001256m2			Shielding Angle:			
ceiling/cavity	0.7	0.7	0.5	0.5	0.3	0.7	0.7	0.5	0.5	0.3	
walls	0.5	0.3	0.5	0.3	0.3	0.5	0.3	0.5	0.3	0.3	
working plane	0.2	0.2	0.2	0.2	0.2	0.2	0.2	0.2	0.2	0.2	
Room dimensions		Viewed crosswise					Viewed endwise				
x = 2H y = 2H	2H	10.0	10.6	10.2	10.8	10.9	10.2	10.8	10.4	10.9	11.1
	3H	10.1	10.7	10.3	10.8	11.0	10.3	10.8	10.5	11.0	11.2
	4H	10.1	10.6	10.4	10.9	11.1	10.3	10.8	10.5	11.0	11.2
	6H	10.1	10.6	10.4	10.8	11.1	10.3	10.8	10.6	11.0	11.3
	8H	10.1	10.6	10.4	10.8	11.1	10.3	10.8	10.6	11.0	11.3
	12H	10.1	10.5	10.4	10.8	11.1	10.3	10.7	10.6	11.0	11.3
4H	2H	9.9	10.5	10.2	10.7	10.9	10.1	10.6	10.3	10.8	11.0
	3H	10.1	10.5	10.4	10.8	11.1	10.2	10.7	10.5	11.0	11.2
	4H	10.1	10.5	10.4	10.8	11.1	10.3	10.7	10.6	11.0	11.3
	6H	10.1	10.5	10.5	10.8	11.2	10.3	10.7	10.7	11.0	11.4
	8H	10.1	10.5	10.5	10.8	11.2	10.3	10.7	10.7	11.0	11.4
	12H	10.1	10.4	10.5	10.8	11.2	10.3	10.6	10.7	11.0	11.4
8H	4H	10.0	10.4	10.4	10.7	11.1	10.2	10.6	10.6	10.9	11.3
	6H	10.1	10.4	10.5	10.8	11.2	10.3	10.6	10.7	11.0	11.4
	8H	10.1	10.4	10.5	10.8	11.2	10.3	10.6	10.7	11.0	11.4
	12H	10.1	10.3	10.5	10.8	11.2	10.3	10.5	10.8	11.0	11.4
12H	4H	10.0	10.3	10.4	10.7	11.1	10.2	10.5	10.6	10.9	11.3
	6H	10.0	10.3	10.5	10.7	11.2	10.2	10.5	10.7	10.9	11.4
	8H	10.1	10.3	10.5	10.7	11.2	10.3	10.5	10.7	10.9	11.4
Variations with the observer position at spacings(CIE Pub.117):											
S = 1.0H	+ 2.2 / - 3.3					+ 2.5 / - 3.2					
1.5H	+ 4.0 / - 3.3					+ 4.2 / - 3.3					
2.0H	+ 3.5 / - 1.3					+ 3.9 / - 1.6					

CIE Pub.117, 1125 lm Total Lamp Luminous Flux Correct (8log(F/F0) = 0.4)
 Area: 0.001256 m2

C Range: 0 - 360DEG
 C Interval: For a lens beam angle of 15°
 Test Speed: HIGH
 Temperature:77.54°F
 Operators:zoe
 Test Date:2024-8-14

γ Range: 0 - 180DEG
 γInterval: 1.0DEG
 Test System:EVERFINE GO-SPEX500_V1 SYSTEM V2.00.461
 Humidity:65.0%
 Test Distance:124.409" [K=1.0000]
 Remarks: LAMP:BXRH-30G10T0-G-83 Ra:90
 LENS:PM-1084 15R
 NO DRIVER:500mA
 30minutes warm-up

UTILIZATION FACTORS TABLE

Test:U:17.642V I:0.5000A P:8.8210W PF:1.0000 Freq:49.99Hz Lamp Flux:1124.6x1 lm		
NAME: CTL-M-1.5-30K-15-RD-AD	TYPE:	WEIGHT:
SPEC.: 3000K	DIM.:	SERIAL No.: 2408141118
MFR.: MERCURY LIGHTING	SUR.: 0.001256m2	Shielding Angle:

REFLECTANCE										
Ceiling	0.8	0.8	0.8	0.7	0.7	0.7	0.5	0.5	0.5	0
Walls	0.7	0.5	0.3	0.7	0.5	0.3	0.7	0.5	0.3	0
Working plane	0.2	0.2	0.2	0.2	0.2	0.2	0.2	0.2	0.2	0
ROOM INDEX	UTILIZATION FACTORS (PERCENT) $k(RI) \times RCR = 5$									
$k = 0.60$	55	52	50	55	52	49	54	51	49	47
0.80	59	56	54	59	56	54	58	56	54	52
1.00	62	59	57	61	58	57	60	58	56	54
1.25	64	61	59	63	61	59	62	60	58	56
1.50	66	63	61	65	62	61	63	62	60	57
2.00	67	65	63	66	64	62	64	63	61	58
2.50	68	66	64	67	65	63	65	63	62	59
3.00	69	67	65	68	66	65	66	64	63	59
4.00	70	68	67	69	67	66	66	65	65	60
5.00	71	69	68	69	68	67	67	66	65	61
ROOM INDEX	UF (total)									Direct
According to DIN EN 13032-2 2004			Suspended					SHRNOM = 1.25		

C Range: 0 - 360DEG

C Interval: For a lens beam angle of 15°

Test Speed: HIGH

Temperature: 77.54°F

Operators: zoe

Test Date: 2024-8-14

γ Range: 0 - 180DEG

γ Interval: 1.0DEG

Test System: EVERFINE GO-SPEX500_V1 SYSTEM V2.00.461

Humidity: 65.0%

Test Distance: 124.409" [K=1.0000]

Remarks: LAMP: BXRH-30G10T0-G-83 Ra: 90

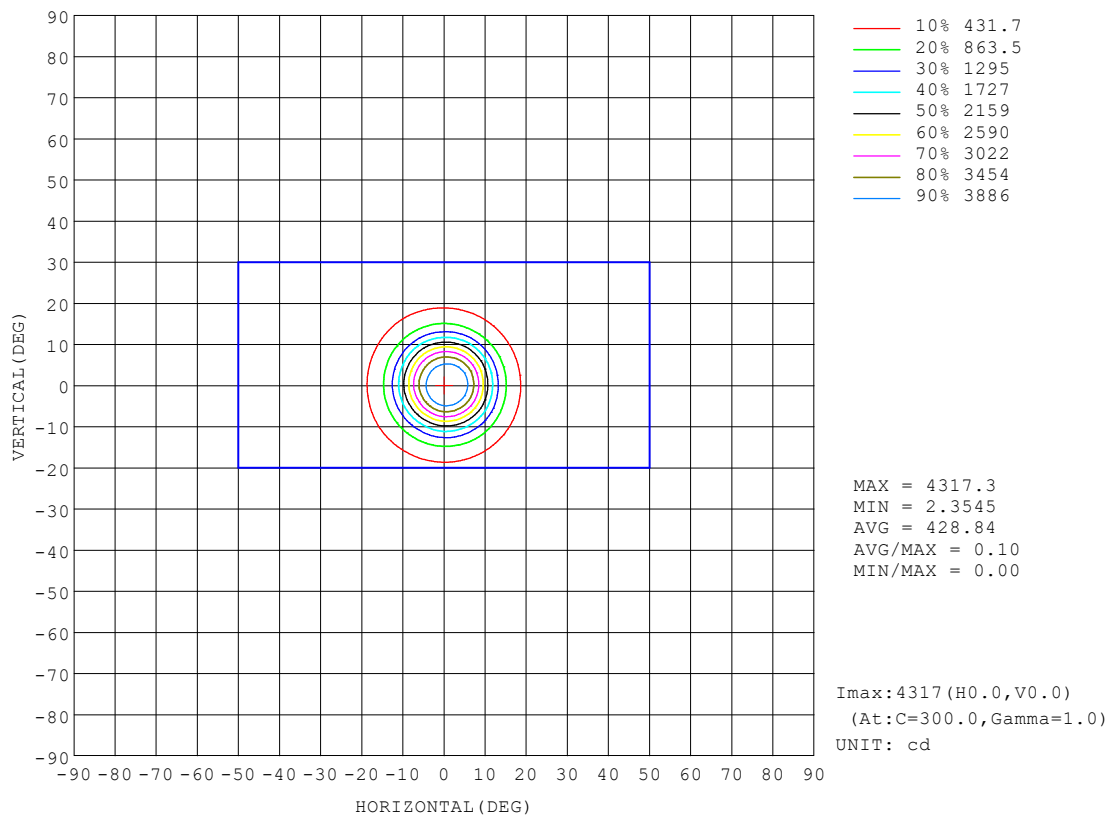
LENS: PM-1084 15R

NO DRIVER: 500mA

30minutes warm-up

ISOCANDELA DIAGRAM

Test:U:17.642V I:0.5000A P:8.8210W PF:1.0000 Freq:49.99Hz Lamp Flux:1124.6x1 lm		
NAME: CTL-M-1.5-30K-15-RD-AD	TYPE:	WEIGHT:
SPEC.: 3000K	DIM.:	SERIAL No.: 2408141118
MFR.: MERCURY LIGHTING	SUR.: 0.001256m2	Shielding Angle:



C Range: 0 - 360DEG

C Interval: For a lens beam angle of 15°

Test Speed: HIGH

Temperature:77.54°F

Operators:zoe

Test Date:2024-8-14

γ Range: 0 - 180DEG

γ Interval: 1.0DEG

Test System:EVERFINE GO-SPEX500_V1 SYSTEM V2.00.461

Humidity:65.0%

Test Distance:124.409" [K=1.0000]

Remarks: LAMP:BXRH-30G10T0-G-83 Ra:90

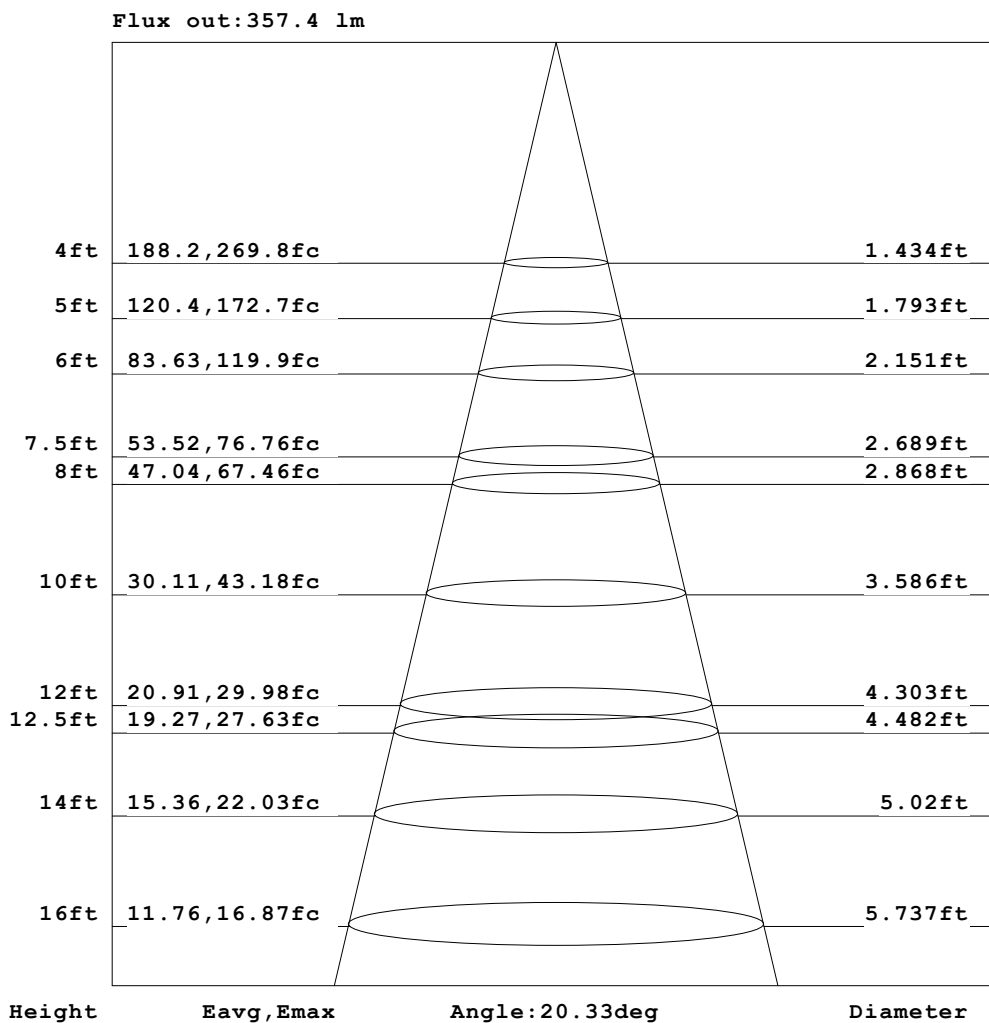
LENS:PM-1084 15R

NO DRIVER:500mA

30minutes warm-up

AAI Figure

Test:U:17.642V I:0.5000A P:8.8210W PF:1.0000 Freq:49.99Hz Lamp Flux:1124.6x1 lm		
NAME: CTL-M-1.5-30K-15-RD-AD	TYPE:	WEIGHT:
SPEC.: 3000K	DIM.:	SERIAL No.: 2408141118
MFR.: MERCURY LIGHTING	SUR.: 0.001256m2	Shielding Angle:



Note: The Curves indicate the illuminated area and the average illumination when the luminaire is at different distance.

C Range: 0 - 360DEG

C Interval: For a lens beam angle of 15°

Test Speed: HIGH

Temperature: 77.54°F

Operators: zoe

Test Date: 2024-8-14

γ Range: 0 - 180DEG

γ Interval: 1.0DEG

Test System: EVERFINE GO-SPEX500_V1 SYSTEM V2.00.461

Humidity: 65.0%

Test Distance: 124.409" [K=1.0000]

Remarks: LAMP: BXRH-30G10T0-G-83 Ra: 90

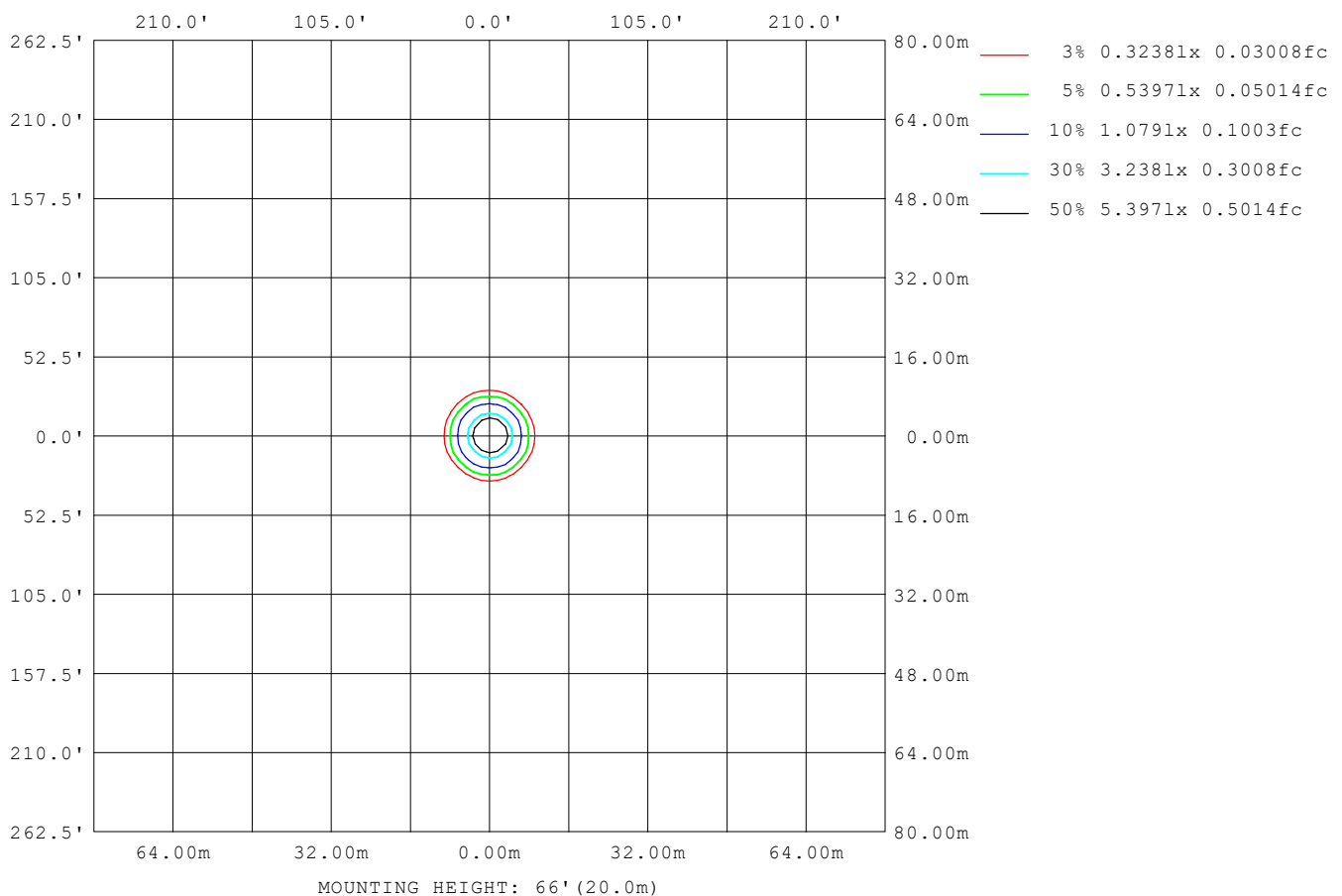
LENS: PM-1084 15R

NO DRIVER: 500mA

30minutes warm-up

ISOLUX DIAGRAM

Test: U:17.642V I:0.5000A P:8.8210W PF:1.0000 Freq:49.99Hz Lamp Flux: 1124.6x1 lm		
NAME: CTL-M-1.5-30K-15-RD-AD	TYPE:	WEIGHT:
SPEC.: 3000K	DIM.:	SERIAL No.: 2408141118
MFR.: MERCURY LIGHTING	SUR.: 0.001256m2	Shielding Angle:


C Range: 0 - 360DEG

C Interval: For a lens beam angle of 15°

Test Speed: HIGH

Temperature: 77.54°F

Operators: zoe

Test Date: 2024-8-14

γ Range: 0 - 180DEG

γ Interval: 1.0DEG

Test System: EVERFINE GO-SPEX500_V1 SYSTEM V2.00.461

Humidity: 65.0%

Test Distance: 124.409" [K=1.0000]

Remarks: LAMP: BXRH-30G10T0-G-83 Ra:90

LENS: PM-1084 15R

NO DRIVER: 500mA

30minutes warm-up

LED Avg.L Report

Test:U:17.642V I:0.5000A P:8.8210W PF:1.0000 Freq:49.99Hz Lamp Flux:1124.6x1 lm		
NAME: CTL-M-1.5-30K-15-RD-AD	TYPE:	WEIGHT:
SPEC.: 3000K	DIM.:	SERIAL No.: 2408141118
MFR.: MERCURY LIGHTING	SUR.: 0.001256m2	Shielding Angle:

AvgL	cd/m2
L_0~180 (65) av	4015
L_0~180 (75) av	2004
L_0~180 (85) av	1575
L_90~270 (65) av	4195
L_90~270 (75) av	2037
L_90~270 (85) av	1638
L_45 (65) av	3968
L_45 (75) av	2016
L_45 (85) av	1498

Standard: GB/T 29293-2012

C Range: 0 - 360DEG

C Interval: For a lens beam angle of 15°

Test Speed: HIGH

Temperature:77.54°F

Operators:zoe

Test Date:2024-8-14

γ Range: 0 - 180DEG

γ Interval: 1.0DEG

Test System:EVERFINE GO-SPEX500_V1 SYSTEM V2.00.461

Humidity:65.0%

Test Distance:124.409" [K=1.0000]

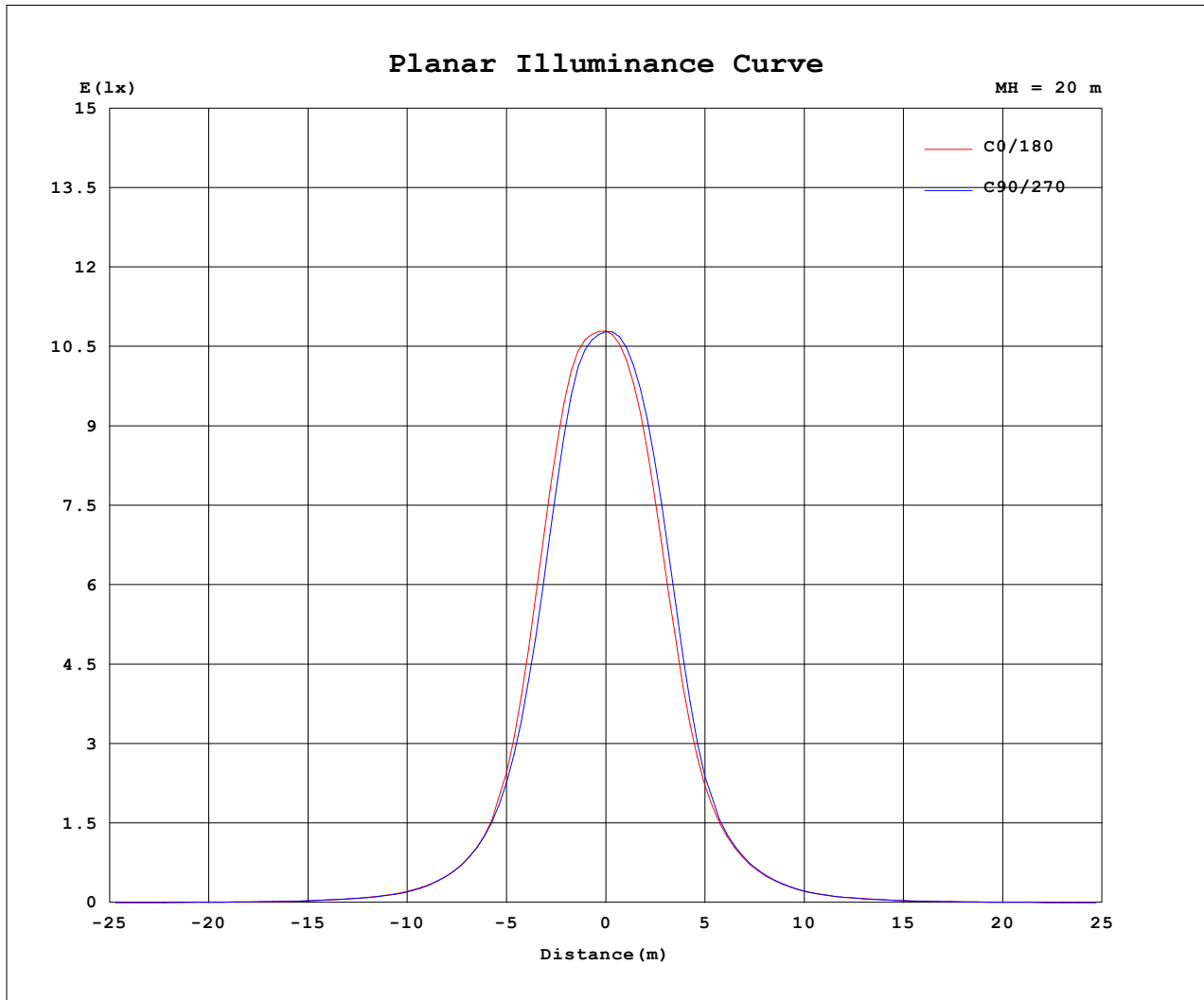
Remarks: LAMP:BXRH-30G10T0-G-83 Ra:90

LENS:PM-1084 15R

NO DRIVER:500mA

30minutes warm-up

Planar Illuminance Curve



C Range: 0 - 360DEG

C Interval: For a lens beam angle of 15°

Test Speed: HIGH

Temperature: 77.54°F

Operators: zoe

Test Date: 2024-8-14

γ Range: 0 - 180DEG

γ Interval: 1.0DEG

Test System: EVERFINE GO-SPEX500_V1 SYSTEM V2.00.461

Humidity: 65.0%

Test Distance: 124.409" [K=1.0000]

Remarks: LAMP: BXRH-30G10T0-G-83 Ra: 90

LENS: PM-1084 15R

NO DRIVER: 500mA

30minutes warm-up

LUMINOUS DISTRIBUTION INTENSITY DATA

Test:U:17.642V I:0.5000A P:8.8210W PF:1.0000 Freq:49.99Hz Lamp Flux:1124.6x1 lm		
NAME: CTL-M-1.5-30K-15-RD-AD	TYPE:	WEIGHT:
SPEC.: 3000K	DIM.:	SERIAL No.: 2408141118
MFR.: MERCURY LIGHTING	SUR.: 0.001256m2	Shielding Angle:

Table--1

UNIT: cd

C (DEG) (DEG)	0	30	60	90	120	150	180	210	240	270	300	330						
0	4314	4314	4314	4314	4314	4314	4314	4314	4314	4314	4314	4314						
5	4056	4014	3939	3871	3793	3739	3739	3770	3844	3926	4021	4070						
10	2417	2344	2209	2093	1999	2011	2075	2131	2262	2355	2447	2473						
15	893	886	872	823	807	796	810	840	854	878	873	900						
20	341	344	346	343	338	345	346	352	365	355	349	343						
25	152	152	148	146	144	150	154	157	164	159	157	154						
30	71.2	71.3	70.2	69.8	69.6	72.6	73.6	74.5	75.8	73.5	72.7	71.9						
35	36.0	36.4	36.6	37.9	38.3	39.2	39.3	39.2	39.3	38.3	37.7	36.6						
40	16.9	17.0	17.3	18.3	18.4	18.5	17.8	17.6	17.7	18.1	17.7	17.1						
45	8.83	9.09	9.51	10.2	10.5	10.4	9.99	9.93	9.91	9.96	9.60	9.00						
50	4.04	4.13	4.29	4.82	5.27	5.08	4.94	4.93	4.91	4.92	4.73	4.19						
55	2.33	2.37	2.46	2.67	2.95	2.99	2.98	3.05	3.07	3.06	2.87	2.52						
60	1.96	2.02	2.09	2.18	2.43	2.57	2.70	2.87	2.91	2.80	2.53	2.09						
65	1.60	1.66	1.72	1.79	1.87	2.26	2.66	2.88	2.92	2.66	1.99	1.62						
70	0.97	1.02	1.04	1.08	1.06	1.03	1.36	1.81	1.36	0.92	0.95	0.96						
75	0.64	0.67	0.69	0.72	0.70	0.68	0.66	0.63	0.61	0.61	0.62	0.63						
80	0.37	0.39	0.40	0.42	0.41	0.40	0.40	0.37	0.36	0.37	0.37	0.37						
85	0.16	0.16	0.17	0.19	0.17	0.17	0.19	0.17	0.16	0.17	0.16	0.15						
90	0.00	0.00	0.00	0.00	0.00	0.00	0.00	0.00	0.00	0.00	0.00	0.00						
95	0.00	0.00	0.00	0.00	0.00	0.00	0.00	0.00	0.00	0.00	0.00	0.00						
100	0.00	0.00	0.00	0.00	0.00	0.00	0.00	0.00	0.00	0.00	0.00	0.00						
105	0.00	0.00	0.00	0.00	0.00	0.00	0.00	0.00	0.00	0.00	0.00	0.00						
110	0.00	0.00	0.00	0.00	0.00	0.00	0.00	0.00	0.00	0.00	0.00	0.00						
115	0.00	0.00	0.00	0.00	0.00	0.00	0.00	0.00	0.00	0.00	0.00	0.00						
120	0.00	0.00	0.00	0.00	0.00	0.00	0.00	0.00	0.00	0.00	0.00	0.00						
125	0.00	0.00	0.00	0.00	0.00	0.00	0.00	0.00	0.00	0.00	0.00	0.00						
130	0.00	0.00	0.00	0.00	0.00	0.00	0.00	0.00	0.00	0.00	0.00	0.00						
135	0.00	0.00	0.00	0.00	0.00	0.00	0.00	0.00	0.00	0.00	0.00	0.00						
140	0.00	0.00	0.00	0.00	0.00	0.00	0.00	0.00	0.00	0.00	0.00	0.00						
145	0.00	0.00	0.00	0.00	0.00	0.00	0.00	0.00	0.00	0.00	0.00	0.00						
150	0.00	0.00	0.00	0.00	0.00	0.00	0.00	0.00	0.00	0.00	0.00	0.00						
155	0.00	0.00	0.00	0.00	0.00	0.00	0.00	0.00	0.00	0.00	0.00	0.00						
160	0.00	0.00	0.00	0.00	0.00	0.00	0.00	0.00	0.00	0.00	0.00	0.00						
165	0.00	0.00	0.00	0.00	0.00	0.00	0.00	0.00	0.00	0.00	0.00	0.00						
170	0.00	0.00	0.00	0.00	0.00	0.00	0.00	0.00	0.00	0.00	0.00	0.00						
175	0.00	0.00	0.00	0.00	0.00	0.00	0.00	0.00	0.00	0.00	0.00	0.00						
180	0.00	0.00	0.00	0.00	0.00	0.00	0.00	0.00	0.00	0.00	0.00	0.00						

C Range: 0 - 360DEG

C Interval: For a lens beam angle of 15°

Test Speed: HIGH

Temperature: 77.54°F

Operators: zoe

Test Date: 2024-8-14

γ Range: 0 - 180DEG

γ Interval: 1.0DEG

Test System: EVERFINE GO-SPEX500_V1 SYSTEM V2.00.461

Humidity: 65.0%

Test Distance: 124.409" [K=1.0000]

Remarks: LAMP: BXRH-30G10T0-G-83 Ra: 90

LENS: PM-1084 15R

NO DRIVER: 500mA

30minutes warm-up