



UL Verification Services Inc.
7036 Snowdrift Road
Allentown, PA 18106
610-774-1300



Indoor Distribution Test Report

Relevant Standards
IES LM-79-2008, ANSI C82.77-2002

Prepared For
Mercury Lighting
20 Audrey Pl
Fairfield, NJ 07004-3416
United States

Catalog Number
L701-GL-4-8000-40K-PIM-U80TW-UNI
Order Number
11800009
Test Number
11800009.03

Test Date

2017-06-06

Prepared By

Dane Hernandez-Adams, Technician

Approved By

Tiffany Hamm, Project Handler

The results contained in this report pertain only to the tested sample.
This report shall not be reproduced, except in full, without written approval of Underwriters Laboratories.
This report must not be used by the client to claim product certification, approval, or endorsement by
NVLAP, NIST, or any agency of the Federal Government.



Luminaire Description: White formed plastic housing, patterned frosted plastic lens enclosure
Lamp: 280 white LEDs
Mounting: Surface – Ceiling
Ballast/Driver: One Universal Lighting Technologies Everline D21CC80UNVTW-D driver

Luminaire



Luminaire Characteristics

Luminous Length: 46.00 in.
Luminous Width: 5.000 in.
Luminous Height: 1.50 in.

Summary of Results

Total Luminaire Output: 8040 Lumens
Luminaire Efficacy: 96.4 lm/w
Maximum Candela: 2153 Candela

Test Conditions

Test Temperature: 25.7 °C
Voltage: 120.0 VAC
Current: 0.6964 A
Power: 83.41 W
Power Factor: 0.998
Frequency: 60 Hz
Current THD: 5.77 %

Laboratory results may not be representative of field performance
Ballast factors have not been applied



Distribution - Goniophotometer

Distribution Test Conditions

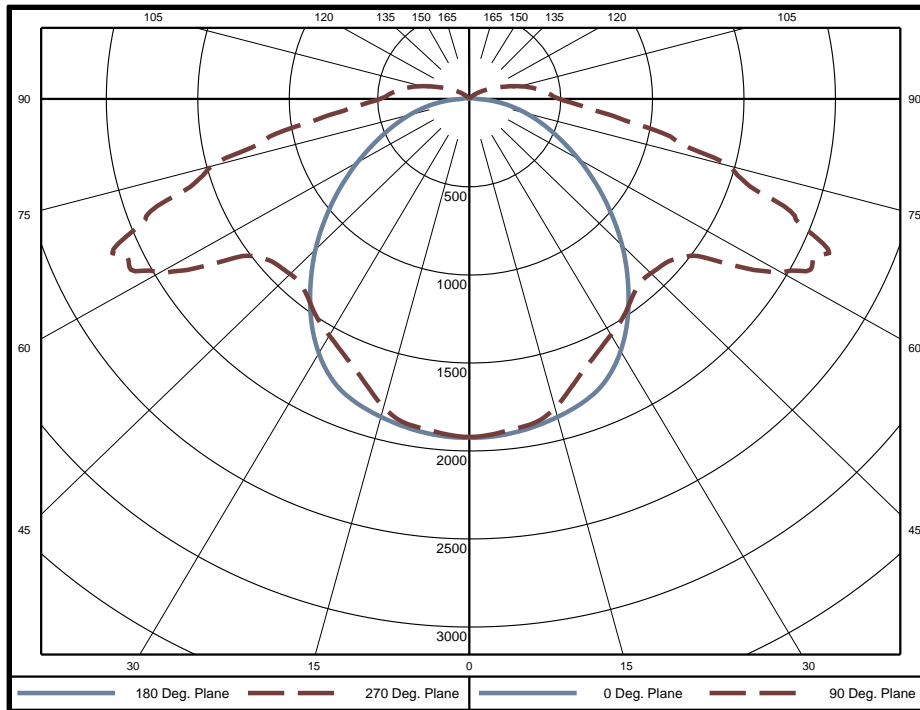
Temperature	Voltage	Current	Power	Power Factor	Frequency	Current THD
25.7 °C	120.0 VAC	0.6964 A	83.41 W	0.998	60 Hz	5.77 %

Summary of Results

Spacing Criteria
 0-180: 1.27
 90-270: 1.27

Total Lumen Output: 8040 Lumens
Luminaire Efficacy: 96.4 lm/w
Maximum Candela: 2153 Candela

Polar Plot



Zonal Lumen Summary

Zone	Lumens	% of Luminaire	Zone	Lumens	% of Luminaire	Zone	Lumens	% of Luminaire
0-5	45.8	0.6%	60-65	614.4	7.6%	120-125	16.8	0.2%
5-10	135.6	1.7%	65-70	636.8	7.9%	125-130	8.8	0.1%
10-15	221.0	2.7%	70-75	582.8	7.2%	130-135	3.7	0.0%
15-20	296.6	3.7%	75-80	514.6	6.4%	135-140	0.7	0.0%
20-25	360.0	4.5%	80-85	374.4	4.7%	140-145	0	0.0%
25-30	412.2	5.1%	85-90	247.6	3.1%	145-150	0	0.0%
30-35	452.3	5.6%	90-95	179.5	2.2%	150-155	0	0.0%
35-40	478.0	5.9%	95-100	142.9	1.8%	155-160	0	0.0%
40-45	491.2	6.1%	100-105	109.6	1.4%	160-165	0.0	0.0%
45-50	500.2	6.2%	105-110	75.9	0.9%	165-170	0.0	0.0%
50-55	511.7	6.4%	110-115	46.9	0.6%	170-175	0.0	0.0%
55-60	552.1	6.9%	115-120	28.3	0.4%	175-180	0.0	0.0%

Zone	Lumens	% of Luminaire
0-40	2402	29.9%
0-60	4457	55.4%
0-90	7427	92.4%
90-180	613	7.6%



Candela Tabulation
Horizontal Angle (Degrees)

	0	22.5	45	67.5	90	112.5	135	157.5	180	202.5	225	247.5	270	292.5	315	337.5
0	1920	1920	1920	1920	1920	1920	1920	1920	1920	1920	1920	1920	1920	1920	1920	1920
5	1920	1914	1908	1903	1904	1903	1908	1914	1920	1914	1908	1903	1904	1903	1908	1914
10	1901	1891	1879	1875	1881	1875	1879	1891	1901	1891	1879	1875	1881	1875	1879	1891
15	1871	1857	1834	1817	1816	1817	1834	1857	1871	1857	1834	1817	1816	1817	1834	1857
20	1832	1809	1755	1709	1704	1709	1755	1809	1832	1809	1755	1709	1704	1709	1755	1809
25	1768	1738	1655	1613	1616	1613	1655	1738	1768	1738	1655	1613	1616	1613	1655	1738
30	1658	1640	1559	1535	1548	1535	1559	1640	1658	1640	1559	1535	1548	1535	1559	1640
35	1516	1521	1462	1466	1486	1466	1462	1521	1516	1521	1462	1466	1486	1466	1462	1521
40	1354	1386	1359	1385	1416	1385	1359	1386	1354	1386	1359	1385	1416	1385	1359	1386
45	1189	1233	1251	1336	1402	1336	1251	1233	1189	1233	1251	1336	1402	1336	1251	1233
50	1018	1072	1162	1346	1431	1346	1162	1072	1018	1072	1162	1346	1431	1346	1162	1072
55	855	924	1116	1402	1572	1402	1116	924	855	924	1116	1402	1572	1402	1116	924
60	700	802	1096	1706	1971	1706	1096	802	700	802	1096	1706	1971	1706	1096	802
65	559	684	1218	1876	2104	1876	1218	684	559	684	1218	1876	2104	1876	1218	684
70	438	603	1306	1743	1871	1743	1306	603	438	603	1306	1743	1871	1743	1306	603
75	330	733	1122	1432	1467	1432	1122	733	330	733	1122	1432	1467	1432	1122	733
80	227	795	935	1063	1037	1063	935	795	227	795	935	1063	1037	1063	935	795
85	126	429	681	685	674	685	681	429	126	429	681	685	674	685	681	429
90	43	252	476	494	492	494	476	252	43	252	476	494	492	494	476	252
95	30	179	355	413	422	413	355	179	30	179	355	413	422	413	355	179
100	22	122	279	346	356	346	279	122	22	122	279	346	356	346	279	122
105	15	69	214	270	278	270	214	69	15	69	214	270	278	270	214	69
110	10	30	138	190	203	190	138	30	10	30	138	190	203	190	138	30
115	6	8	77	129	144	129	77	8	6	8	77	129	144	129	77	8
120	2	3	43	87	100	87	43	3	2	3	43	87	100	87	43	3
125	0	1	20	55	66	55	20	1	0	1	20	55	66	55	20	1
130	0	0	3	32	42	32	3	0	0	0	3	32	42	32	3	0
135	0	0	0	10	20	10	0	0	0	0	0	10	20	10	0	0
140	0	0	0	0	1	0	0	0	0	0	0	0	1	0	0	0
145	0	0	0	0	0	0	0	0	0	0	0	0	0	0	0	0
150	0	0	0	0	0	0	0	0	0	0	0	0	0	0	0	0
155	0	0	0	0	0	0	0	0	0	0	0	0	0	0	0	0
160	0	0	0	0	0	0	0	0	0	0	0	0	0	0	0	0
165	0	0	0	0	0	0	0	0	0	0	0	0	0	0	0	0
170	0	0	0	0	0	0	0	0	0	0	0	0	0	0	0	0
175	0	0	0	0	0	0	0	0	0	0	0	0	0	0	0	0
180	0	0	0	0	0	0	0	0	0	0	0	0	0	0	0	0

Average Luminance (cd/m²)
Horizontal Angle (Degrees)

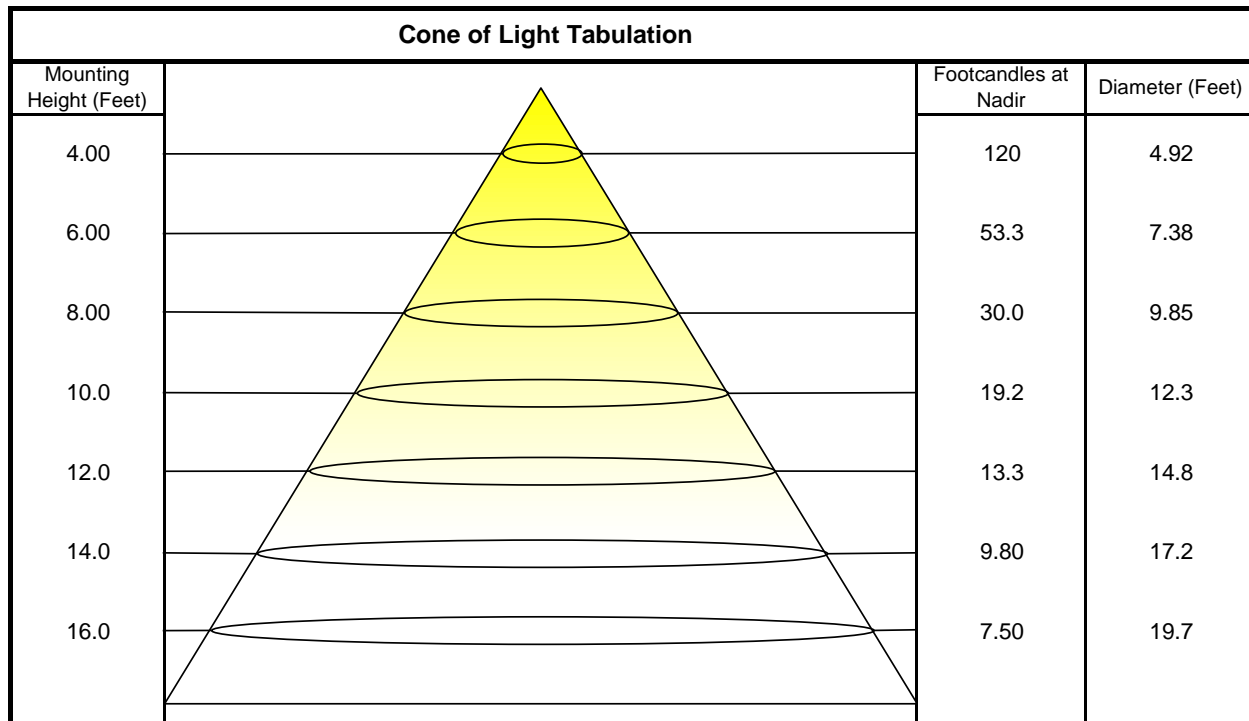
	0	45	90
0	12940	12940	12940
45	11330	11930	13360
55	10040	13110	18470
65	8914	19420	33540
75	8584	29230	38210
85	9746	52670	52080



Utilization of Lumens - Zonal Cavity Method

Effective Floor Cavity Reflectance 20%																		
Ceiling Cavity Reflectance	80				70				50			30			10			0
Wall Reflectance	70	50	30	10	70	50	30	10	50	30	10	50	30	10	50	30	10	0
Room Cavity Ratio (RCR)	** Values are expressed as Lumens delivered to the task surface **																	
0	9426	9426	9426	9426	9135	9135	9135	9135	8593	8593	8593	8097	8097	8097	7641	7641	7641	7427
1	8284	7766	7302	6884	7984	7516	7094	6712	7048	6701	6382	6619	6335	6073	6223	5995	5782	5553
2	7383	6560	5879	5306	7094	6347	5722	5192	5947	5424	4972	5579	5144	4762	5238	4881	4562	4331
3	6644	5641	4865	4246	6374	5460	4743	4165	5119	4509	4007	4804	4289	3856	4511	4079	3709	3484
4	6034	4930	4121	3503	5785	4775	4024	3442	4485	3837	3324	4215	3659	3209	3963	3489	3097	2882
5	5521	4364	3556	2960	5294	4233	3478	2913	3984	3325	2821	3752	3180	2731	3536	3040	2643	2438
6	5082	3905	3115	2548	4876	3792	3050	2511	3578	2924	2437	3378	2803	2365	3191	2687	2294	2100
7	4702	3525	2762	2228	4516	3428	2708	2197	3242	2603	2137	3069	2501	2077	2906	2403	2018	1836
8	4371	3207	2475	1972	4204	3122	2429	1947	2961	2339	1896	2809	2253	1846	2667	2169	1797	1625
9	4081	2937	2237	1764	3929	2863	2198	1742	2722	2121	1700	2589	2046	1657	2463	1974	1616	1454
10	3824	2706	2037	1592	3687	2641	2003	1573	2517	1937	1536	2399	1872	1500	2288	1810	1464	1312

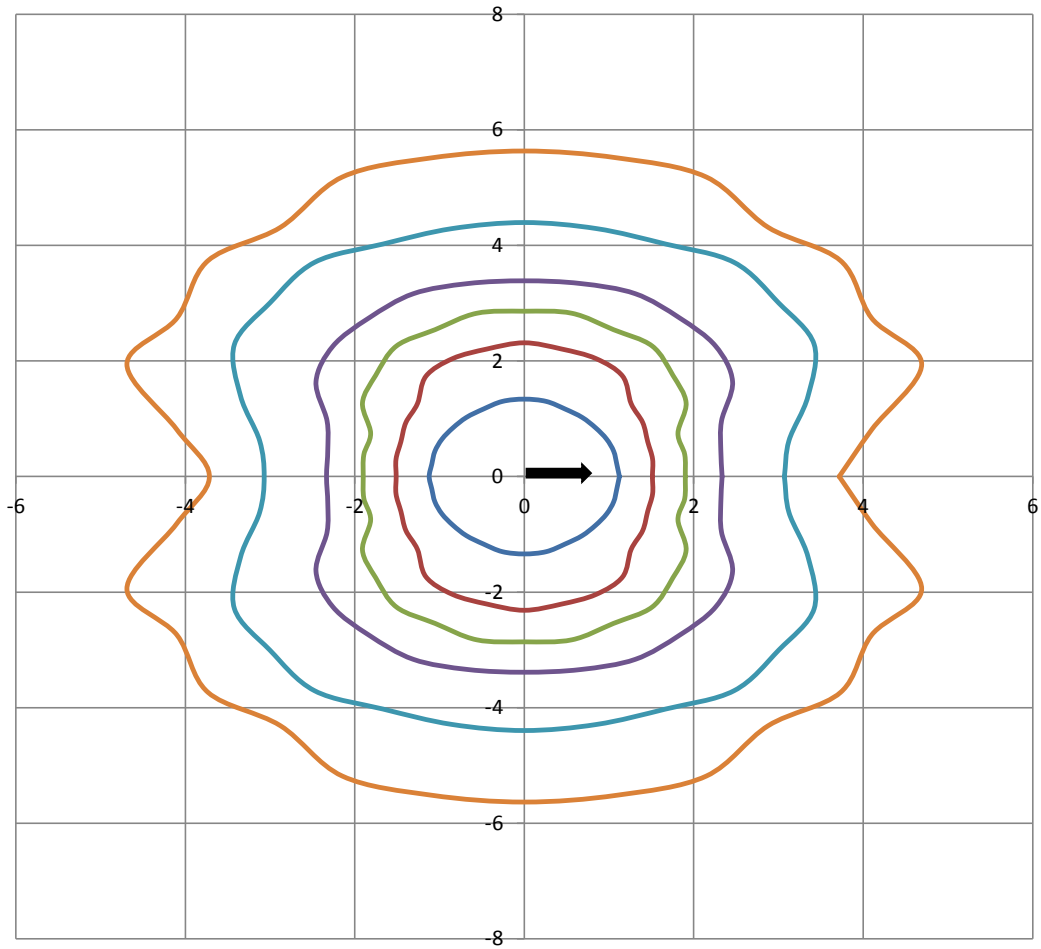
Beam and Field Information	
CIE Type:	Direct
Center Beam Intensity:	1920 Candela
Central Cone Intensity:	1916 Candela
Beam Flux:	6153.4 Lumens
Beam Angle (0-180):	103.5 Degrees
Beam Angle (90-270):	161.5 Degrees
Field Angle (0-180):	163.5 Degrees
Field Angle (90-270):	221.6 Degrees





ISOFootcandle Plot

Mounting Height - 8 Feet



Grid Lines in Units of Mounting Height

