

Luminaire Property

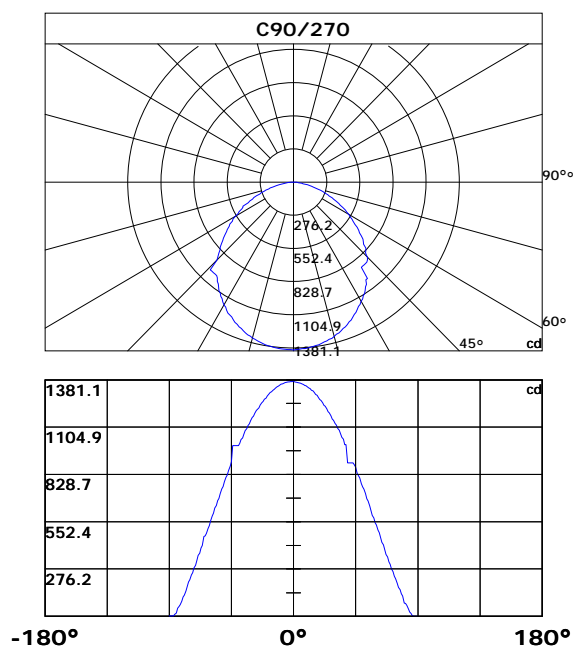
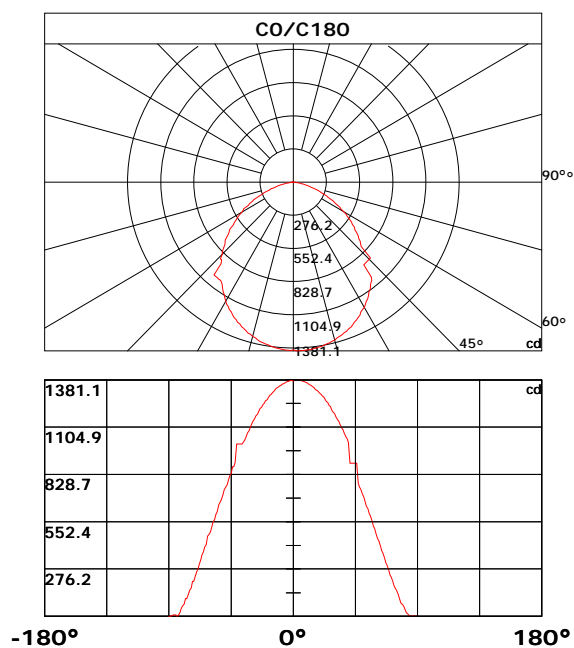
Luminaire Description: GM-40W
 Luminaire Categorie: GALAXY MARS
 Lamp Categorie:
 Lamp Description: Samsung 2835
 Number of Lamp:
 Lamp Lumens(lm): 3630.93 Luminous
 Length(m):
 Luminous Width(m):
 Luminous Height(m):

Voltage: 119.4 V
 Current: 0.315 A
 Power: 40.94 W
 Test Lab: *Mercury Lighting
 Photometric Type: Type C

Photometric Results

CIE Class: Direct
 Measurement Flux: 3630.93 lm
 Efficiency: 88.6891 lm/W
 Central Intensity: 1372.555cd
 Max. Intensity: 1381.051cd
 Field Angle(10%Imax): 152.28, 156.95

Max.Intensity Angle: C:0.0 G:1.0
 Beam Angle(50%Imax): 104.31, 108.15
 Luminaire Efficacy Rating(LER) : 100.00%
 Upward Ratio: 0.0%
 Downward Ratio: 100.0%



Light intensity data Unit[cd]

C\G	G0.0	G1.0	G2.0	G3.0	G4.0	G5.0	G6.0	G7.0	G8.0	G9.0
C0.0	1372.6	1381.1	1380.7	1380.7	1379.6	1377.2	1376.4	1372.9	1371.1	1366.9
C30.0	1372.6	1364.1	1362.6	1360.2	1358.7	1354.9	1350.3	1348.1	1342.1	1335.7
C60.0	1372.6	1367.6	1367.2	1366.2	1364.4	1361.9	1360.2	1356.6	1351.7	1349.2
C90.0	1372.6	1369.0	1368.3	1365.8	1364.4	1361.2	1357.3	1354.9	1349.5	1346.7
C120.0	1372.6	1373.3	1372.9	1372.9	1371.8	1370.1	1367.6	1364.1	1362.3	1358.0
C150.0	1372.6	1376.1	1375.7	1375.0	1372.9	1371.8	1369.0	1364.4	1362.3	1357.0
C180.0	1372.6	1377.9	1377.2	1374.3	1370.8	1369.0	1363.7	1358.4	1355.2	1348.1
C210.0	1372.6	1365.5	1365.5	1364.8	1363.4	1362.6	1360.2	1356.6	1354.1	1349.9
C240.0	1372.6	1366.9	1365.8	1364.8	1362.6	1361.2	1357.7	1352.7	1350.6	1342.1
C270.0	1372.6	1370.1	1370.4	1369.4	1368.7	1366.2	1365.1	1361.6	1357.7	1355.2
C300.0	1372.6	1371.8	1370.4	1369.0	1366.2	1364.4	1360.5	1355.2	1352.4	1346.7
C330.0	1372.6	1376.1	1374.7	1373.3	1372.2	1368.7	1364.8	1362.6	1357.0	1354.1
C360.0	1372.6	1381.1	1380.7	1380.7	1379.6	1377.2	1376.4	1372.9	1371.1	1366.9
C\G	G10.0	G11.0	G12.0	G13.0	G14.0	G15.0	G16.0	G17.0	G18.0	G19.0
C0.0	1364.4	1358.7	1352.7	1349.2	1341.4	1337.5	1324.8	1319.8	1314.8	1304.2
C30.0	1332.5	1320.9	1320.9	1312.0	1302.8	1292.5	1287.6	1281.9	1270.2	1256.8
C60.0	1346.7	1337.2	1333.3	1325.8	1317.3	1313.1	1308.1	1298.2	1287.9	1276.6
C90.0	1340.0	1332.9	1329.0	1320.9	1316.3	1307.1	1295.7	1290.4	1278.7	1266.7
C120.0	1355.6	1349.9	1343.9	1340.3	1332.5	1328.7	1319.8	1310.6	1305.6	1295.0
C150.0	1351.0	1348.1	1340.3	1337.5	1327.9	1319.5	1314.5	1304.6	1298.9	1287.9
C180.0	1344.9	1336.4	1332.5	1323.3	1313.1	1307.8	1296.4	1290.4	1278.0	1265.3
C210.0	1347.4	1341.4	1335.0	1331.8	1323.7	1319.1	1310.2	1301.4	1296.1	1284.4
C240.0	1342.1	1335.0	1326.9	1323.0	1310.2	1310.2	1300.3	1289.7	1283.7	1271.3
C270.0	1350.3	1344.6	1341.0	1333.6	1325.8	1321.2	1312.0	1307.4	1297.5	1286.5
C300.0	1339.6	1331.5	1327.9	1318.4	1313.8	1303.5	1292.9	1286.9	1275.2	1262.8
C330.0	1348.1	1340.7	1337.2	1328.7	1324.4	1315.2	1305.3	1300.0	1288.3	1283.0
C360.0	1364.4	1358.7	1352.7	1349.2	1341.4	1337.5	1324.8	1319.8	1314.8	1304.2
C\G	G20.0	G21.0	G22.0	G23.0	G24.0	G25.0	G26.0	G27.0	G28.0	G29.0
C0.0	1298.9	1286.9	1281.2	1268.1	1254.0	1246.9	1232.0	1224.6	1200.5	1192.0
C30.0	1251.5	1237.3	1229.9	1215.0	1199.8	1191.6	1175.4	1158.0	1149.5	1140.7
C60.0	1269.9	1263.5	1250.8	1237.3	1223.5	1215.7	1199.8	1192.0	1175.4	1166.9
C90.0	1260.3	1247.6	1233.1	1226.3	1211.1	1195.5	1187.4	1170.4	1153.1	1144.2
C120.0	1283.7	1278.0	1265.6	1252.2	1245.8	1230.6	1215.4	1207.9	1191.6	1175.0
C150.0	1275.6	1269.5	1256.4	1249.4	1234.8	1220.0	1212.5	1196.3	1187.4	1170.8
C180.0	1258.6	1244.0	1236.6	1221.0	1213.6	1196.6	1179.6	1171.5	1153.4	1143.9
C210.0	1279.1	1267.1	1260.7	1247.6	1233.4	1226.3	1210.8	1195.5	1187.4	1179.3
C240.0	1258.9	1252.5	1238.7	1231.3	1216.4	1200.5	1192.7	1176.1	1158.4	1149.9
C270.0	1274.1	1268.5	1255.0	1247.9	1233.8	1218.6	1210.8	1203.3	1186.7	1169.3
C300.0	1256.1	1242.6	1234.8	1220.0	1204.4	1196.6	1179.6	1171.1	1153.4	1144.6
C330.0	1270.2	1263.9	1250.1	1236.3	1228.5	1213.2	1197.0	1187.8	1170.8	1152.7
C360.0	1298.9	1286.9	1281.2	1268.1	1254.0	1246.9	1232.0	1224.6	1200.5	1192.0

Light intensity data Unit[cd]

C\G	G30.0	G31.0	G32.0	G33.0	G34.0	G35.0	G36.0	G37.0	G38.0	G39.0
C0.0	1184.2	1166.5	1148.5	1139.3	1120.1	1100.3	1090.0	1069.9	1048.6	1037.6
C30.0	1122.3	1103.1	1093.6	1073.8	1053.6	1043.0	1010.4	999.4	905.2	905.2
C60.0	1149.9	1131.5	1122.3	1103.8	1093.9	1074.1	1053.6	1043.3	1021.4	998.0
C90.0	1126.2	1116.6	1097.5	1087.6	1066.0	1045.4	1034.8	1001.9	1001.9	896.7
C120.0	1166.2	1148.8	1140.0	1130.8	1111.6	1092.2	1072.0	1061.7	1039.8	1028.8
C150.0	1160.1	1142.4	1124.0	1114.5	1094.3	1073.8	1063.5	1041.9	1019.9	1009.0
C180.0	1124.7	1104.9	1084.4	1072.3	1050.7	1029.2	1017.8	1006.5	1006.5	1006.5
C210.0	1153.8	1144.6	1126.2	1107.0	1096.8	1077.3	1055.0	1044.4	1033.4	1011.4
C240.0	1131.1	1112.0	1102.8	1082.6	1072.0	1050.7	1028.1	1016.8	899.2	899.2
C270.0	1161.2	1142.8	1124.0	1114.8	1095.0	1085.1	1063.8	1042.6	1032.0	1009.3
C300.0	1125.4	1106.3	1095.4	1075.2	1064.6	1042.6	1020.7	1010.0	903.1	903.1
C330.0	1143.5	1124.7	1105.6	1095.4	1075.2	1053.6	1043.0	1021.0	1021.0	998.7
C360.0	1184.2	1166.5	1148.5	1139.3	1120.1	1100.3	1090.0	1069.9	1048.6	1037.6
C\G	G40.0	G41.0	G42.0	G43.0	G44.0	G45.0	G46.0	G47.0	G48.0	G49.0
C0.0	1015.0	895.3	895.3	895.3	895.3	895.3	895.3	775.0	753.4	739.9
C30.0	905.2	905.2	905.2	881.2	868.4	843.6	830.9	805.4	774.6	766.5
C60.0	998.0	998.0	998.0	998.0	905.2	880.8	868.1	843.3	817.8	805.1
C90.0	896.7	896.7	896.7	896.7	884.7	872.3	834.1	821.3	808.6	774.6
C120.0	1006.8	1006.8	1006.8	1006.8	1006.8	1006.8	900.3	875.5	850.4	837.6
C150.0	902.4	902.4	902.4	902.4	902.4	890.4	864.9	852.5	824.5	775.7
C180.0	1006.5	1006.5	898.2	873.4	873.4	833.7	820.6	793.7	766.5	752.7
C210.0	1011.4	1011.4	1011.4	1011.4	1011.4	894.3	868.8	856.0	830.2	817.4
C240.0	899.2	899.2	899.2	899.2	886.5	861.3	835.9	822.4	775.0	775.0
C270.0	998.0	998.0	998.0	998.0	998.0	901.7	876.2	850.4	824.2	811.8
C300.0	903.1	903.1	903.1	890.7	865.9	852.8	827.0	775.7	775.7	760.8
C330.0	998.7	998.7	998.7	998.7	890.0	864.5	851.4	825.6	812.5	786.3
C360.0	1015.0	895.3	895.3	895.3	895.3	895.3	895.3	775.0	753.4	739.9
C\G	G50.0	G51.0	G52.0	G53.0	G54.0	G55.0	G56.0	G57.0	G58.0	G59.0
C0.0	712.7	698.8	671.2	643.3	628.7	601.1	587.0	556.9	527.9	513.3
C30.0	739.9	726.5	699.6	672.3	645.0	631.2	617.4	587.7	575.6	545.2
C60.0	778.5	765.4	738.9	711.9	698.8	671.2	657.4	628.4	614.6	585.9
C90.0	756.6	743.1	716.2	687.2	673.4	645.7	617.8	589.5	575.3	546.6
C120.0	811.8	785.2	771.8	745.6	732.1	704.9	678.0	663.8	636.2	607.9
C150.0	775.7	758.7	744.9	717.6	689.6	675.8	647.9	633.7	605.0	590.5
C180.0	739.2	709.1	681.1	667.0	652.1	609.3	594.8	565.0	549.8	520.8
C210.0	790.9	777.4	750.2	723.6	709.8	681.9	666.3	652.1	609.3	595.1
C240.0	756.2	742.7	715.5	687.9	673.7	644.0	615.6	601.5	572.5	543.1
C270.0	784.9	758.0	743.8	716.9	688.9	675.1	646.4	632.3	603.3	587.0
C300.0	733.5	718.0	690.3	676.5	648.6	620.3	606.1	577.8	548.4	533.5
C330.0	772.8	745.9	718.0	704.5	677.2	663.4	635.1	606.8	592.6	564.0
C360.0	712.7	698.8	671.2	643.3	628.7	601.1	587.0	556.9	527.9	513.3

Light intensity data Unit[cd]

C\G	G60.0	G61.0	G62.0	G63.0	G64.0	G65.0	G66.0	G67.0	G68.0	G69.0
C0.0	484.3	455.6	440.8	412.1	383.1	368.5	340.2	312.0	297.9	270.0
C30.0	517.2	502.7	474.0	459.9	430.8	402.5	388.0	359.3	331.3	317.1
C60.0	571.8	543.1	514.0	499.5	471.2	465.9	429.8	400.8	386.6	357.9
C90.0	532.5	503.8	489.3	460.2	431.6	417.4	388.7	360.4	346.2	318.2
C120.0	579.2	565.0	533.9	520.1	491.0	465.9	465.9	420.6	405.7	391.2
C150.0	561.8	532.8	517.9	488.9	474.4	445.4	416.3	400.0	356.5	342.4
C180.0	491.4	476.9	467.3	419.2	404.3	375.3	360.4	331.9	303.1	272.6
C210.0	565.7	536.7	522.2	492.8	467.3	467.3	421.3	392.6	377.7	348.9
C240.0	528.2	499.5	469.8	455.6	425.9	396.9	382.3	353.4	324.2	309.8
C270.0	557.9	528.6	513.7	484.3	469.4	465.9	413.1	398.6	369.6	355.1
C300.0	504.5	490.3	460.9	446.4	417.4	388.4	373.5	345.0	330.7	300.4
C330.0	534.9	520.4	491.4	466.3	466.3	419.5	390.8	376.7	348.2	319.8
C360.0	484.3	455.6	440.8	412.1	383.1	368.5	340.2	312.0	297.9	270.0
C\G	G70.0	G71.0	G72.0	G73.0	G74.0	G75.0	G76.0	G77.0	G78.0	G79.0
C0.0	242.0	228.3	201.6	176.0	163.3	150.7	125.3	102.2	76.8	69.0
C30.0	288.7	260.7	247.0	219.7	193.2	180.1	153.4	129.2	117.4	77.0
C60.0	343.8	315.1	287.6	259.9	246.1	219.0	191.0	178.2	153.3	129.0
C90.0	304.0	276.2	260.8	233.4	219.8	193.5	168.1	155.5	131.3	119.4
C120.0	348.2	333.8	305.8	291.7	263.5	249.6	222.5	195.8	182.9	157.1
C150.0	313.4	299.3	271.1	257.0	229.5	202.5	189.2	163.5	138.4	126.3
C180.0	260.3	230.8	203.9	203.9	164.7	152.2	127.6	103.9	103.9	70.8
C210.0	319.8	305.3	276.6	262.5	232.9	219.2	205.9	166.7	154.1	129.4
C240.0	280.7	266.4	238.3	209.6	196.1	170.0	157.2	120.2	120.2	76.9
C270.0	326.3	297.9	283.6	255.5	241.9	214.3	201.2	175.1	148.3	123.9
C300.0	272.0	257.9	230.5	204.1	190.7	164.7	152.2	127.3	103.4	77.5
C330.0	305.3	277.4	263.2	235.9	222.4	195.6	170.0	157.4	132.8	120.7
C360.0	242.0	228.3	201.6	176.0	163.3	150.7	125.3	102.2	76.8	69.0
C\G	G80.0	G81.0	G82.0	G83.0	G84.0	G85.0	G86.0	G87.0	G88.0	G89.0
C0.0	58.9	39.5	21.7	13.6	1.9	1.2	1.3	1.4	1.5	1.6
C30.0	77.0	62.9	43.6	34.6	18.1	10.6	0.4	0.4	0.4	0.4
C60.0	117.4	105.9	73.0	62.6	46.9	46.9	25.2	5.5	0.6	0.5
C90.0	77.0	74.4	64.0	44.0	25.6	16.9	4.7	0.4	0.4	0.4
C120.0	144.8	119.0	107.4	84.4	63.3	47.7	47.7	16.5	2.4	0.5
C150.0	102.9	77.2	69.0	48.4	38.8	19.9	13.3	4.6	0.4	0.4
C180.0	60.1	47.6	22.6	6.5	0.8	8.5	8.1	7.6	2.2	0.4
C210.0	117.5	105.7	72.5	62.0	47.1	47.1	17.9	6.4	1.3	1.3
C240.0	76.9	63.7	34.4	34.4	17.5	10.9	1.6	1.1	1.2	1.3
C270.0	112.2	89.1	67.3	56.7	46.6	19.0	11.0	1.8	1.4	1.4
C300.0	69.2	48.3	38.3	19.8	5.9	1.6	1.2	1.3	1.4	1.5
C330.0	109.1	75.3	64.5	46.6	46.6	16.2	3.8	1.5	1.5	1.5
C360.0	58.9	39.5	21.7	13.6	1.9	1.2	1.3	1.4	1.5	1.6

Light intensity data Unit[cd]

C\G	G90.0									
C0.0	1.8									
C30.0	0.4									
C60.0	0.4									
C90.0	0.4									
C120.0	0.4									
C150.0	0.4									
C180.0	0.4									
C210.0	1.4									
C240.0	1.4									
C270.0	1.6									
C300.0	1.6									
C330.0	1.8									
C360.0	1.8									

Zonal Luminous Flux Data

Gamma [°]	I _{mean} [cd]	Zonal Flux [lm]	Sum Flux [lm]	Zonal Flux [%]	Sum Flux [%]
0.0	1372.56	0.00	0.00	0.00	0.00
0.0-1.0	1371.61	1.31	1.31	0.04	0.04
1.0-2.0	1370.96	3.94	5.25	0.11	0.14
2.0-3.0	1369.69	6.55	11.80	0.18	0.33
3.0-4.0	1367.98	9.16	20.97	0.25	0.58
4.0-5.0	1365.77	11.76	32.73	0.32	0.90
5.0-6.0	1362.73	14.34	47.07	0.39	1.30
6.0-7.0	1359.01	16.89	63.96	0.47	1.76
7.0-8.0	1355.50	19.43	83.39	0.54	2.30
8.0-9.0	1350.81	21.93	105.32	0.60	2.90
9.0-10.0	1346.89	24.41	129.74	0.67	3.57
10.0-11.0	1339.78	26.85	156.58	0.74	4.31
11.0-12.0	1335.06	29.24	185.82	0.81	5.12
12.0-13.0	1328.72	31.61	217.43	0.87	5.99
13.0-14.0	1320.78	33.91	251.35	0.93	6.92
14.0-15.0	1314.61	36.18	287.53	1.00	7.92
15.0-16.0	1305.64	38.39	325.92	1.06	8.98
16.0-17.0	1298.45	40.55	366.47	1.12	10.09
17.0-18.0	1289.60	42.67	409.14	1.18	11.27
18.0-19.0	1278.38	44.68	453.82	1.23	12.50
19.0-20.0	1269.74	46.64	500.46	1.28	13.78
20.0-21.0	1260.12	48.58	549.04	1.34	15.12
21.0-22.0	1249.41	50.43	599.47	1.39	16.51
22.0-23.0	1237.70	52.19	651.65	1.44	17.95
23.0-24.0	1224.93	53.84	705.50	1.48	19.43
24.0-25.0	1212.68	55.43	760.92	1.53	20.96
25.0-26.0	1199.41	56.94	817.86	1.57	22.52
26.0-27.0	1187.87	58.41	876.26	1.61	24.13
27.0-28.0	1172.30	59.75	936.02	1.65	25.78
28.0-29.0	1160.76	61.04	997.06	1.68	27.46
29.0-30.0	1145.71	62.27	1059.33	1.72	29.18
30.0-31.0	1128.69	63.29	1122.63	1.74	30.92
31.0-32.0	1113.67	64.24	1186.87	1.77	32.69
32.0-33.0	1099.75	65.21	1252.08	1.80	34.48
33.0-34.0	1082.82	66.05	1318.13	1.82	36.30
34.0-35.0	1063.93	66.67	1384.80	1.84	38.14
35.0-36.0	1046.06	67.18	1451.98	1.85	39.99
36.0-37.0	1029.95	67.71	1519.69	1.86	41.85
37.0-38.0	994.34	67.57	1587.26	1.86	43.71
38.0-39.0	975.31	67.23	1654.48	1.85	45.57
39.0-40.0	961.77	67.56	1722.04	1.86	47.43

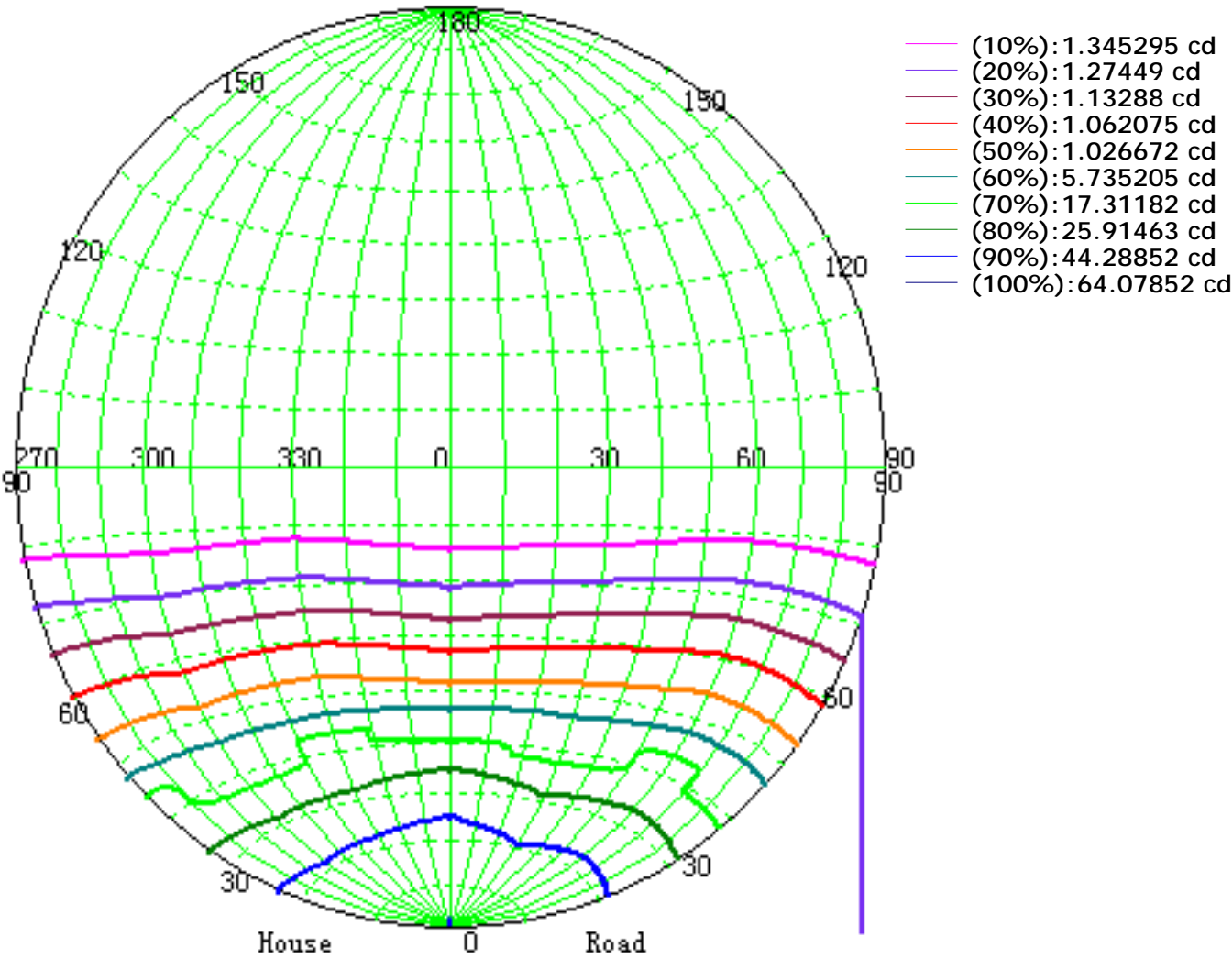
Zonal Luminous Flux Data

Gamma [°]	I _{mean} [cd]	Zonal Flux [lm]	Sum Flux [lm]	Zonal Flux [%]	Sum Flux [%]
40.0-41.0	951.80	68.14	1790.18	1.88	49.30
41.0-42.0	942.77	68.83	1859.02	1.90	51.20
42.0-43.0	937.66	69.66	1928.67	1.92	53.12
43.0-44.0	915.69	69.95	1998.62	1.93	55.04
44.0-45.0	883.14	69.13	2067.75	1.90	56.95
45.0-46.0	856.12	68.02	2135.77	1.87	58.82
46.0-47.0	824.73	66.85	2202.63	1.84	60.66
47.0-48.0	801.10	65.72	2268.35	1.81	62.47
48.0-49.0	783.60	65.08	2333.43	1.79	64.27
49.0-50.0	762.72	64.47	2397.90	1.78	66.04
50.0-51.0	744.07	63.75	2461.65	1.76	67.80
51.0-52.0	720.12	62.83	2524.48	1.73	69.53
52.0-53.0	696.19	61.61	2586.09	1.70	71.22
53.0-54.0	676.51	60.50	2646.59	1.67	72.89
54.0-55.0	652.00	59.30	2705.89	1.63	74.52
55.0-56.0	630.81	57.97	2763.86	1.60	76.12
56.0-57.0	607.95	56.64	2820.50	1.56	77.68
57.0-58.0	584.20	55.13	2875.63	1.52	79.20
58.0-59.0	561.07	53.54	2929.17	1.47	80.67
59.0-60.0	535.79	51.82	2980.99	1.43	82.10
60.0-61.0	512.95	50.05	3031.03	1.38	83.48
61.0-62.0	491.27	48.39	3079.42	1.33	84.81
62.0-63.0	467.11	46.61	3126.03	1.28	86.09
63.0-64.0	444.39	44.73	3170.76	1.23	87.33
64.0-65.0	423.24	42.94	3213.70	1.18	88.51
65.0-66.0	397.54	40.95	3254.65	1.13	89.64
66.0-67.0	370.94	38.64	3293.29	1.06	90.70
67.0-68.0	348.15	36.43	3329.72	1.00	91.70
68.0-69.0	325.28	34.36	3364.07	0.95	92.65
69.0-70.0	300.37	32.13	3396.21	0.88	93.54
70.0-71.0	279.10	29.95	3426.16	0.82	94.36
71.0-72.0	255.83	27.81	3453.97	0.77	95.13
72.0-73.0	234.09	25.62	3479.59	0.71	95.83
73.0-74.0	213.68	23.54	3503.13	0.65	96.48
74.0-75.0	192.62	21.47	3524.60	0.59	97.07
75.0-76.0	171.95	19.35	3543.95	0.53	97.60
76.0-77.0	147.92	17.05	3561.00	0.47	98.07
77.0-78.0	130.25	14.89	3575.89	0.41	98.48
78.0-79.0	106.42	12.72	3588.61	0.35	98.83
79.0-80.0	93.60	10.78	3599.39	0.30	99.13
80.0-81.0	75.72	9.16	3608.55	0.25	99.38

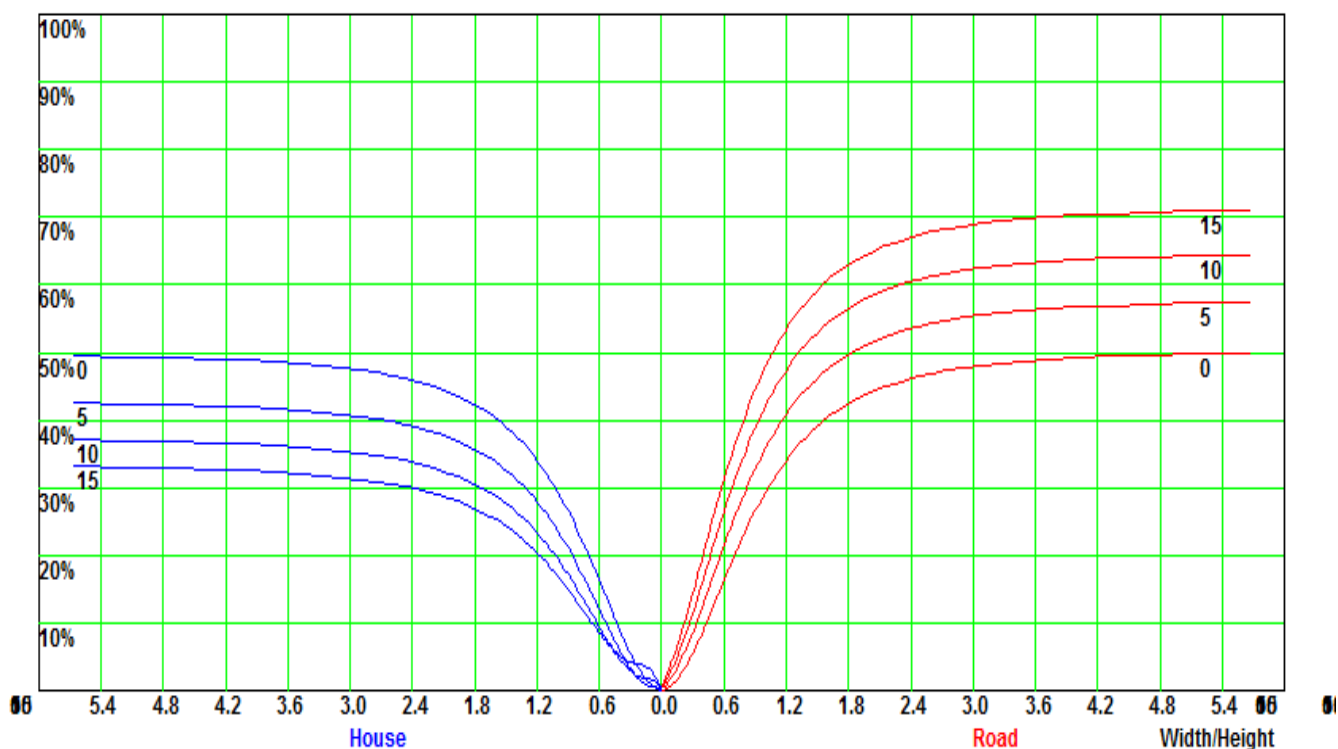
Zonal Luminous Flux Data

Gamma [°]	I _{mean} [cd]	Zonal Flux [lm]	Sum Flux [lm]	Zonal Flux [%]	Sum Flux [%]
81.0-82.0	56.54	7.17	3615.72	0.20	99.58
82.0-83.0	42.80	5.40	3621.12	0.15	99.73
83.0-84.0	29.90	3.96	3625.08	0.11	99.84
84.0-85.0	20.53	2.75	3627.84	0.08	99.91
85.0-86.0	11.35	1.74	3629.58	0.05	99.96
86.0-87.0	4.03	0.84	3630.42	0.02	99.99
87.0-88.0	1.22	0.29	3630.71	0.01	99.99
88.0-89.0	0.92	0.12	3630.83	0.00	100.00
89.0-90.0	0.99	0.10	3630.93	0.00	100.00

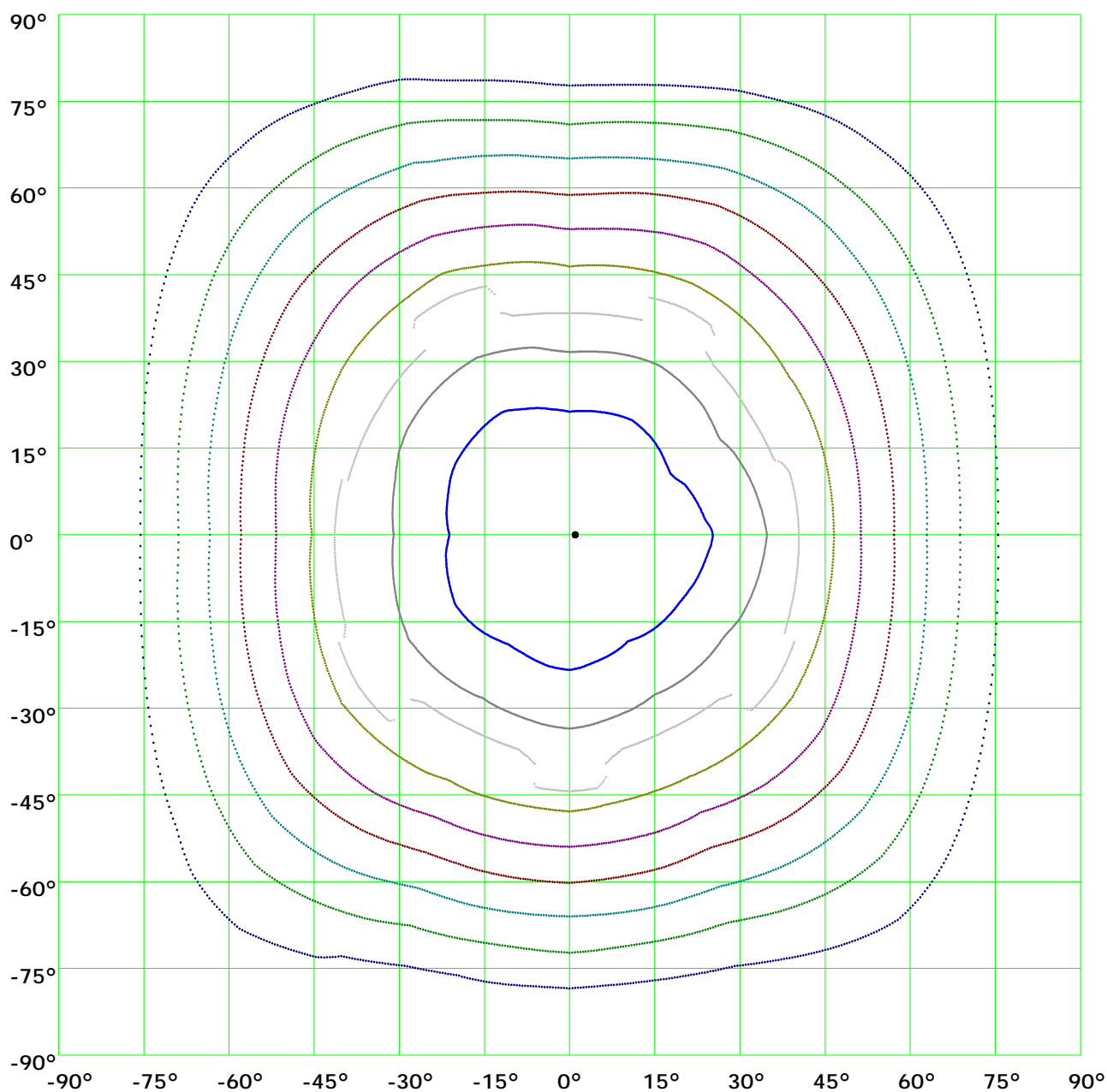
Iso-Candela [cd]



Coefficient Utilization Curve

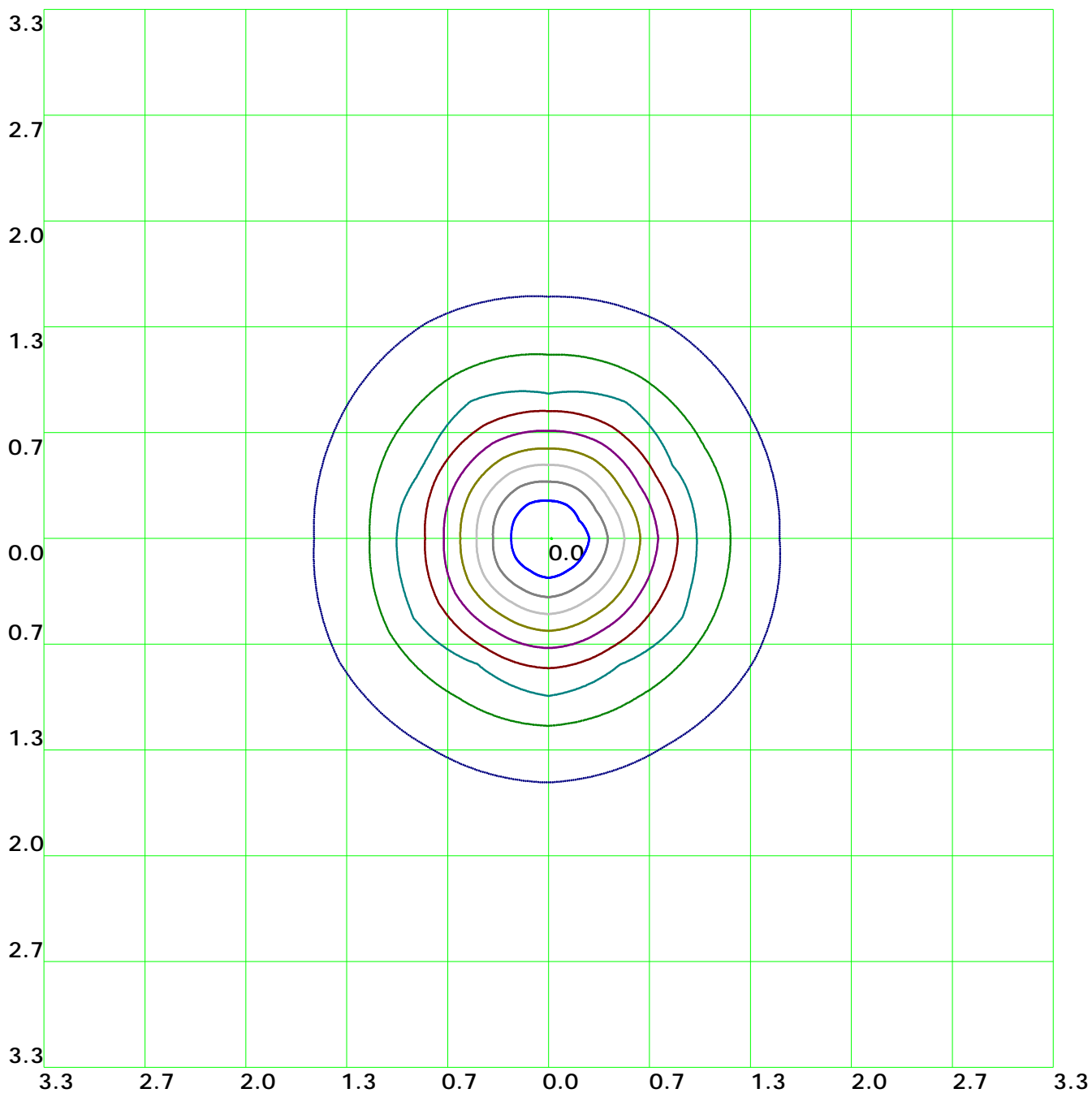


Isocandela(rectangle)



— (10%): 138.1cd	— (20%): 276.2cd	— (30%): 414.3cd	— (40%): 552.4cd
— (50%): 690.5cd	— (60%): 828.6cd	— (70%): 966.7cd	— (80%): 1104.8cd
— (90%): 1242.9cd	— (100%): 1381.1cd		

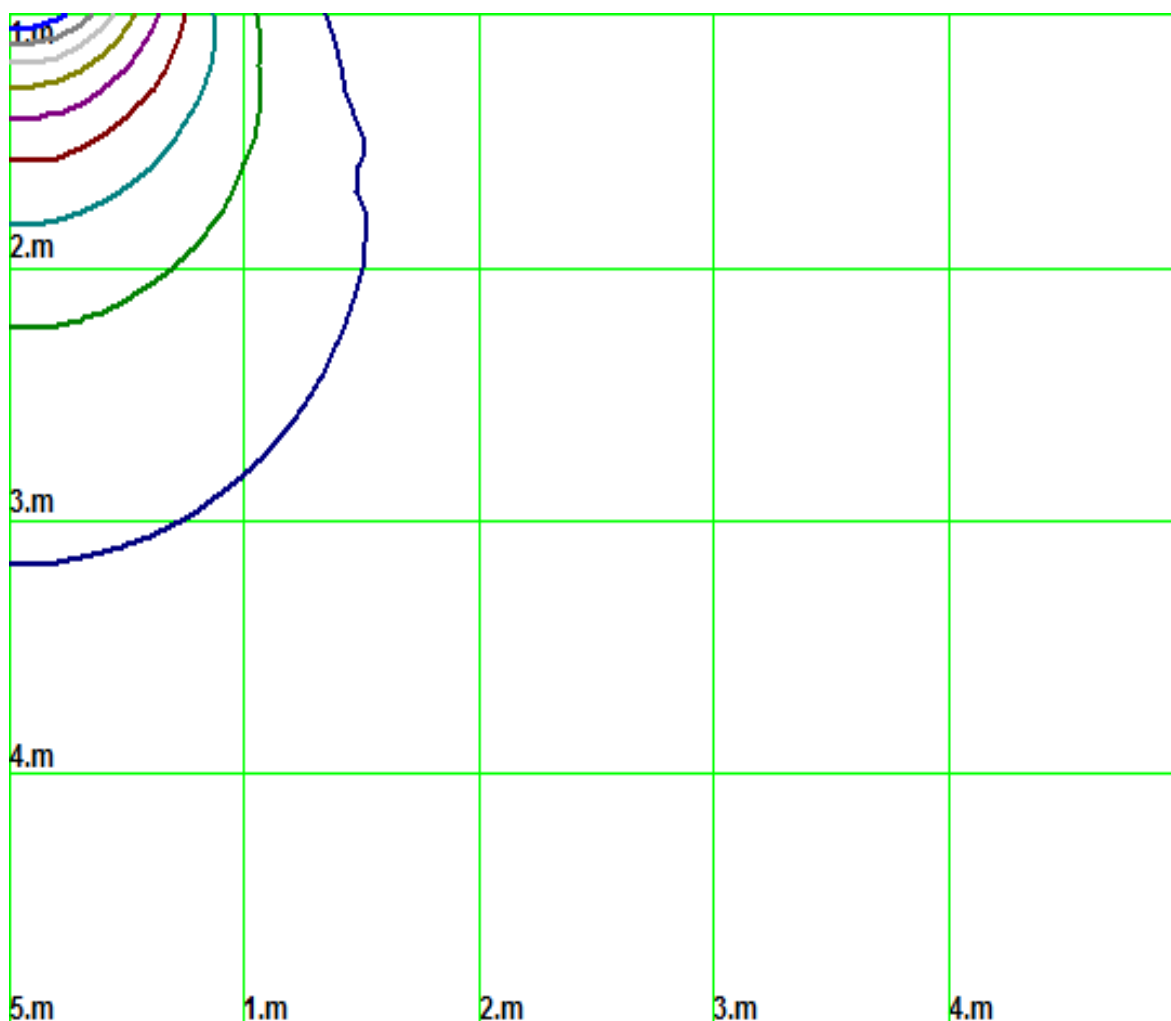
Isolx curve



Height: 1 m

- | | | | |
|-------------------|--------------------|------------------|-------------------|
| — (10%): 138.1lx | — (20%): 276.2lx | — (30%): 414.3lx | — (40%): 552.4lx |
| — (50%): 690.5lx | — (60%): 828.6lx | — (70%): 966.7lx | — (80%): 1104.8lx |
| — (90%): 1243.1lx | — (100%): 1379.7lx | | |

Space Isolx Curve



- (10%): 138.1lx — (20%): 276.2lx — (30%): 414.3lx — (40%): 552.4lx
- (50%): 690.5lx — (60%): 828.6lx — (70%): 966.7lx — (80%): 1104.8lx
- (90%): 1243.1lx — (100%): 1379.7lx

Luminance Limiting Curve

Diameter: 0mm

Length: 0mm

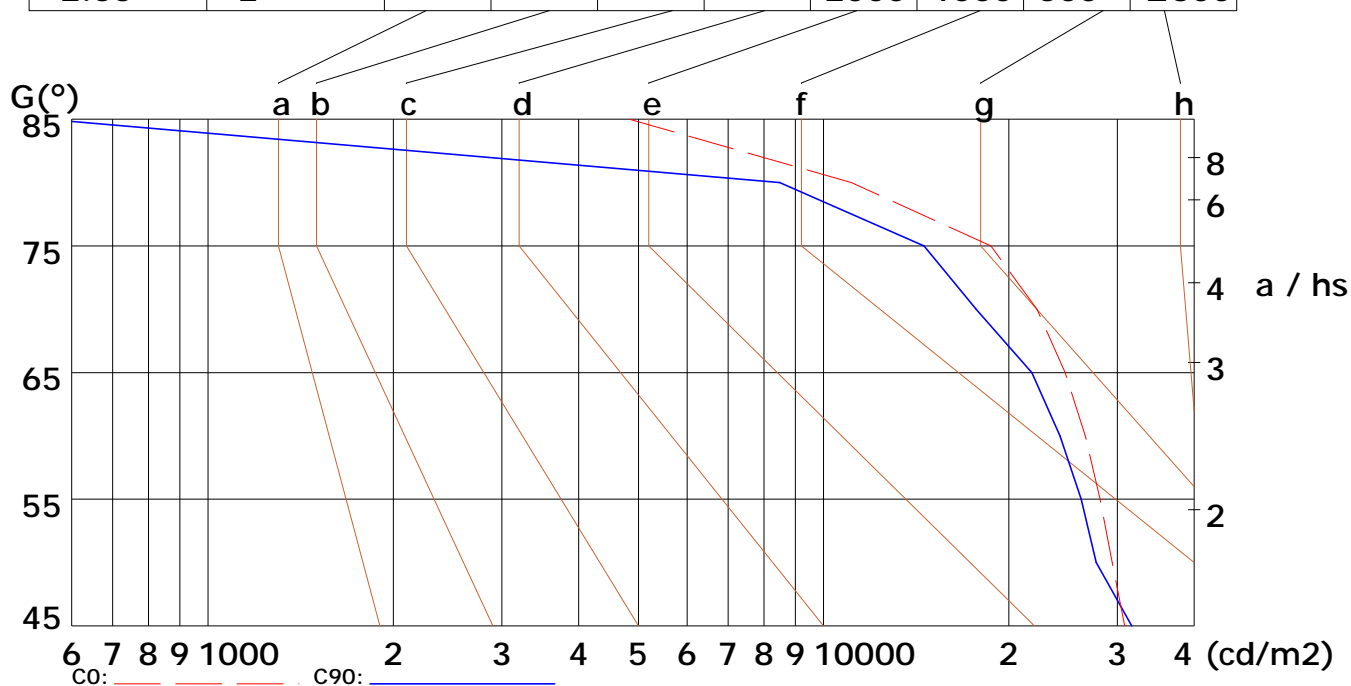
Width: 0mm

Height: 0mm

(cd/m²)

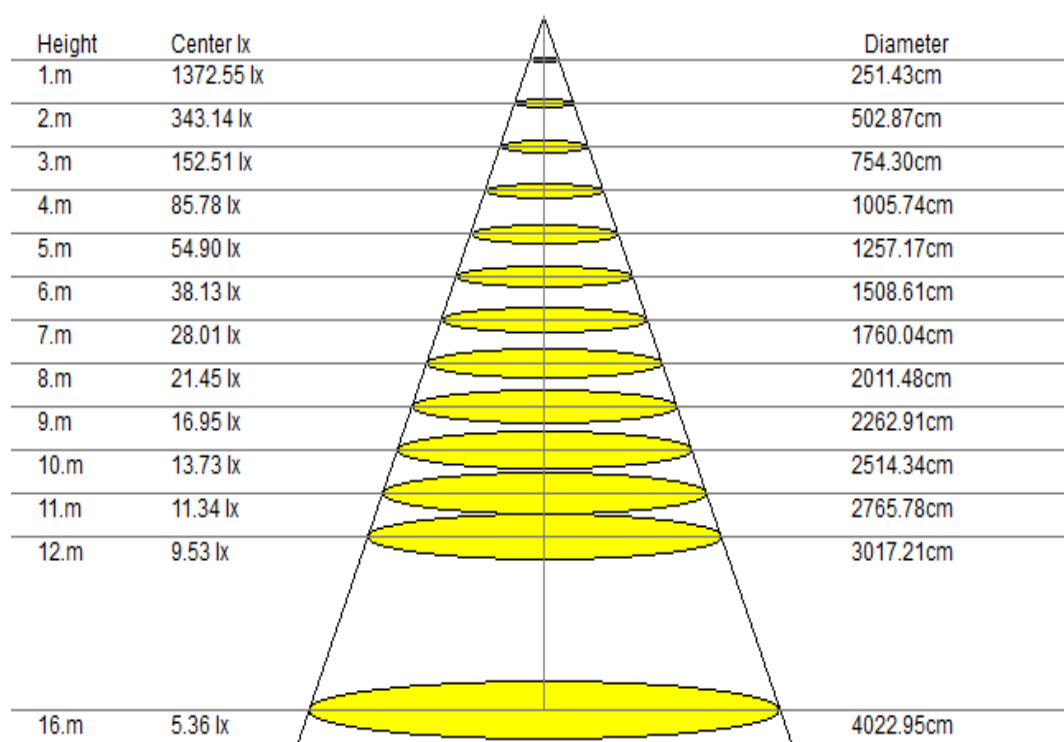
γ	45°	50°	55°	60°	65°	70°	75°	80°	85°
C0	30841	29425	28145	26623	24691	22221	18695	11091	4834
C90	31655	27717	26201	24215	21801	17692	14557	8486	335

Glare	Quality	Service Values Illuminance (lx)							
		2000	1000	500	≤300				
1.15	A	2000	1000	500	≤300				
1.5	B		2000	1000	500	≤300			
1.85	C			2000	1000	500	≤300		
2.2	D				2000	1000	500	≤300	
2.55	E					2000	1000	500	≤300



Lum. Limiting Curve (C0/C90)

Lux-Distance Curve

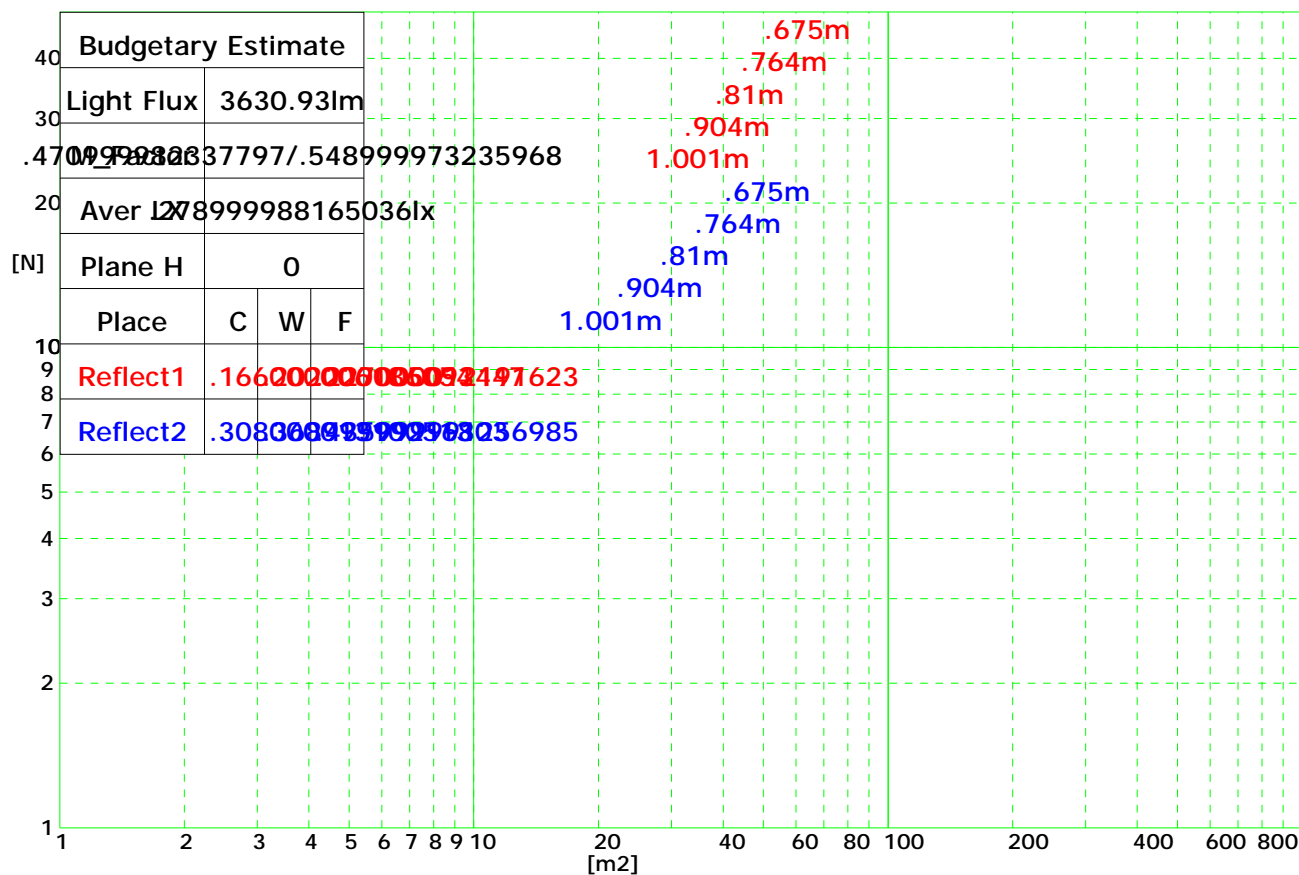


Beam Angle: 103.00° (50%Imax)

Coefficients of Utilization

RHOCC	80			70			50			30			10			0
RHOW	50	30	10	50	30	10	50	30	10	50	30	10	50	30	10	0
RCR	COEFFICIENTS OF UTILIZATION FOR RHOFC=20															
0	1.19	1.19	1.19	1.16	1.16	1.16	1.11	1.11	1.11	1.06	1.06	1.06	1.02	1.02	1.02	1.00
1	1.06	1.04	1.03	1.04	1.02	1.01	1.01	0.99	0.97	0.96	0.94	0.92	0.89	0.87	0.85	0.80
2	0.90	0.88	0.86	0.90	0.87	0.85	0.87	0.84	0.81	0.84	0.80	0.77	0.79	0.75	0.72	0.67
3	0.78	0.75	0.73	0.78	0.74	0.72	0.76	0.72	0.69	0.74	0.69	0.65	0.71	0.66	0.61	0.57
4	0.67	0.65	0.63	0.68	0.64	0.61	0.67	0.62	0.59	0.66	0.60	0.56	0.64	0.58	0.53	0.49
5	0.59	0.56	0.54	0.60	0.56	0.53	0.60	0.55	0.51	0.59	0.53	0.49	0.57	0.51	0.46	0.42
6	0.52	0.49	0.48	0.53	0.49	0.47	0.53	0.48	0.45	0.53	0.47	0.43	0.52	0.46	0.41	0.37
7	0.47	0.44	0.42	0.47	0.44	0.41	0.48	0.43	0.40	0.48	0.42	0.38	0.48	0.41	0.36	0.33
8	0.42	0.39	0.38	0.43	0.39	0.37	0.44	0.39	0.36	0.44	0.38	0.34	0.44	0.38	0.32	0.29
9	0.38	0.35	0.34	0.39	0.35	0.33	0.40	0.35	0.32	0.41	0.35	0.31	0.41	0.34	0.29	0.26
10	0.34	0.32	0.31	0.35	0.32	0.30	0.37	0.32	0.29	0.38	0.32	0.28	0.38	0.32	0.27	0.24

Indoor Budgetary Estimate Chart



UGR

Ceiling	70	70	50	50	30	70	70	50	50	30	
Wall	50	30	50	30	30	50	30	50	30	30	
Floor	20	20	20	20	20	20	20	20	20	20	
Room Size	Left to light axis direction of observation					Direction of light axis parallel observation					
X	Y										
2H	2H	14.6	15.9	14.9	15.9	16.4	14.6	15.8	14.9	16.0	16.4
	3H	16.2	17.4	16.7	17.9	18.0	16.2	17.4	16.5	17.8	17.9
	4H	17.1	18.1	17.3	18.6	18.7	16.8	18.0	17.3	18.5	18.8
	6H	17.5	18.5	18.0	18.9	19.0	17.4	18.4	17.9	18.9	19.1
	8H	18.0	18.9	18.1	19.0	19.4	17.8	18.8	17.9	19.0	19.3
4H	12H	17.9	18.8	18.2	19.2	19.6	17.7	18.6	18.1	19.2	19.5
	2H	15.8	16.6	15.8	16.7	17.1	15.6	16.4	15.7	16.8	17.0
	3H	17.5	18.3	17.7	18.5	18.9	17.4	18.1	17.7	18.5	18.8
	4H	18.2	18.9	18.5	19.2	19.5	18.1	18.8	18.5	19.1	19.6
	6H	18.8	19.5	19.2	19.8	20.2	18.7	19.5	19.1	19.7	20.2
8H	8H	19.1	19.8	19.5	19.9	20.4	19.0	19.7	19.3	19.9	20.4
	12H	19.3	19.9	19.7	20.1	20.5	19.2	19.8	19.5	20.1	20.5
	4H	18.6	19.2	18.9	19.3	19.8	18.3	19.0	18.7	19.4	19.8
	6H	19.4	19.8	19.7	20.1	20.6	19.3	19.7	19.7	20.3	20.5
	8H	19.7	20.2	20.2	20.4	20.9	19.7	19.9	20.0	20.5	21.0
12H	12H	20.0	20.4	20.5	20.7	21.2	19.9	20.3	20.3	20.8	21.3
	4H	18.5	19.1	19.0	19.4	19.9	18.5	19.0	18.8	19.5	19.8
	6H	19.4	20.1	19.8	20.2	20.7	19.5	19.8	19.8	20.2	20.7
	8H	20.0	20.3	20.4	20.6	21.1	19.8	20.2	20.3	20.6	20.9